



RETRO FIGHTERS D6 Wireless Gamepad User Guide

[Home](#) » [RETRO FIGHTERS](#) » RETRO FIGHTERS D6 Wireless Gamepad User Guide 

RETRO FIGHTERS D6 Wireless Gamepad User Guide

D6 wireless
gamepad

compatible with
Dreamcast, Switch, & PC



**RETRO
FIGHTERS**

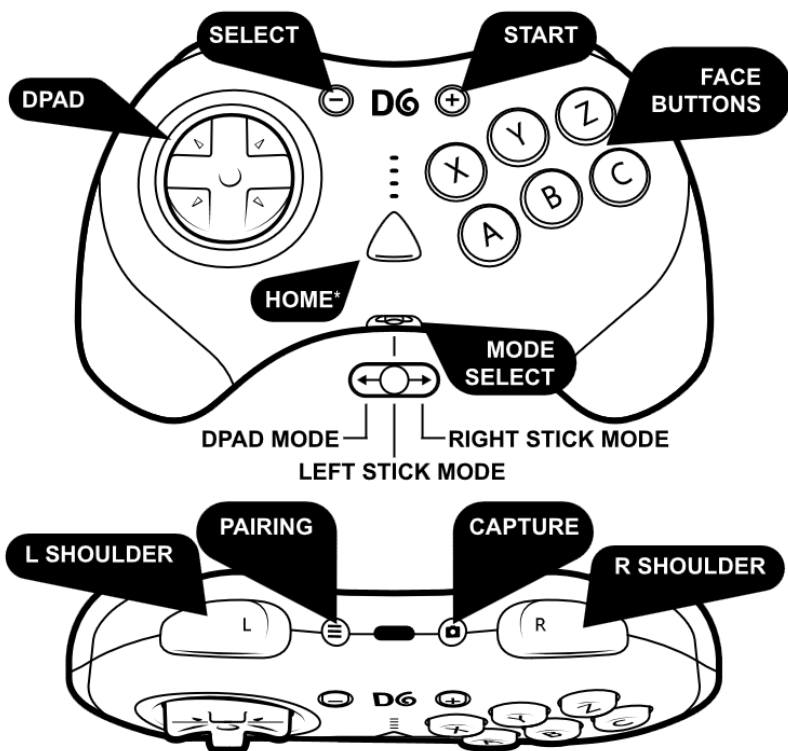
QUICK START GUIDE
20250108v1

Contents

- 1 **CONTROLLER LAYOUT**
- 2 **PAIRING INSTRUCTIONS**
- 3 **INPUT MODES & MACROS**
- 4 **BUTTON MAPPING GUIDE**
- 5 **LED GUIDE**
- 6 **FAQ**
- 7 **Documents / Resources**
 - 7.1 **References**

CONTROLLER LAYOUT

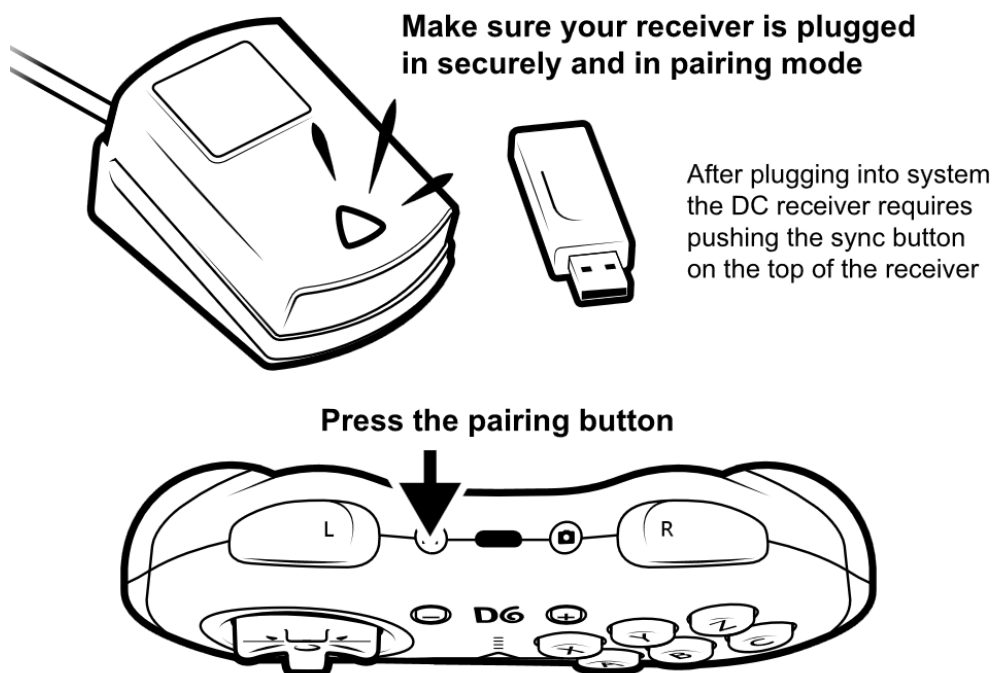
get to know your controller



*HOME BUTTON IS A START BUTTON WHILE USED ON DREAMCAST FOR AUTHENTIC FEEL

PAIRING INSTRUCTIONS

sync up and get ready to play



Wait for a stable LED light on receiver for successfull pairing

DO NOT PRESS RECEIVER SYNC BUTTON WHILE PLUGGING IN. RECEIVER WILL ENTER THE FW UPGRADE MODE. RE-PLUG TO CANCEL FW UPDATE MODE



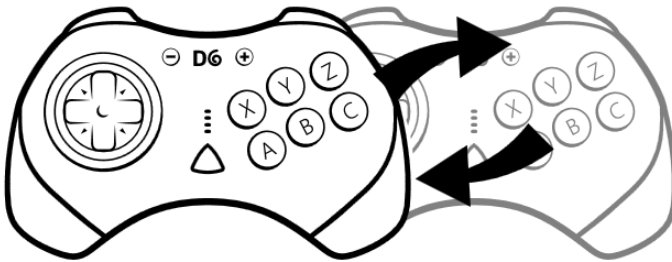
Problems with your Switch?

You may need a couple more steps to setup your controller before gaming!

1. Navigate to: **SETTINGS > CONTROLLERS AND SENSORS**
2. Turn on: **PRO CONTROLLER WIRED COMMUNICATION**
3. Check that your **USB receiver or cable connection** is secure
4. Retry initial pairing instructions

INPUT MODES & MACROS

customize your experience



Dreamcast Z/C Button Mode:

- Dreamcast natively supports C/Z buttons! However, not all games support these buttons... Thankfully we added a macro to enable full G/Z button mode.
- Hold **(-)+C** to enable

Alternate Mode:

- Not all fighting game mappings are the same! We have added an alternate mode to cover most use cases. If you know one not mentioned feel free to reach out to our team for added support
- There are two modes normal and a secondary mode that is able to change button assignments. In normal mode you cannot change button assignment so there is always a standard profile to roll back to (see **BUTTON MAPPING GUIDE**)
- Hold **(+)+(-)** to enable
 - Within the alternate mode hold **L + (+)**

Switch Alternate Mode:

- Switch controllers use a separate macro to swap the button assignments.

(sec **BUTTON MAPPING GUIDE**)

■ Hold (+) +(-) to enable

Switch Trigger to Shoulder Mode:

- We have added this macro to simply swap the shoulder and trigger button input positions

■ Hold (-)+Z

Input Mode Swap:


- Some games and devices prefer one protocol over another. This macro allows free swapping between X and D-Input modes for best compatibility


■ Hold **HOME** (triangle button) to enable


BUTTON MAPPING GUIDE


platform / mode specific input

	X-INPUT		D-INPUT		SWITCH		DC	
PAIRING	PAIRING		PAIRING		PAIRING		PAIRING	
CAPTURE	L3		L3		CAPTURE		N/A	
HOME	HOME		HOME		HOME		+/START	
-/SELECT	-/SELECT		-/SELECT		-/SELECT		N/A	
+/START	+/START		+/START		+/START		N/A	
DPAD	DPAD		DPAD		DPAD		DPAD	
A	A		A		B		A	
B	B		B		A		B	
X	X		X		Y		X	
Y	Y		Y		X		Y	
Z	LB	RB	L1	R1	L	R	L	Z
C	RB	RT	R1	R2	R	ZR	R	C
L	LT	LB	L2	L1	ZL	L	L	
R	RT	LT	R2	L2	ZR	ZL	R	


L + (+)


L + (+)


(-) + Z


(-) + C

(+) + (-) ALT. MODE

LED GUIDE

understanding all LED patterns



FAQ

frequently asked questions

The DPAD is not working in the correct mode, how do I fix it?

- Make sure that the mode switch is in the correct mode, if DP (all the way to the left) or RS (all the way to the right). Not all games use the same input method so it is best to check what mode your game accepts for movement/etc.

My controller is acting weird, how do I reset the controller?

- You can reset the controller to factory settings by pressing the button through the small hole on the back of the shell. A small paperclip or pin should be perfect to press this button.

Why is my D6 not connecting to my PC?

- Make sure that after you plug in the USB dongle that you hold down the top of the USB dongle so that it enters pairing mode. Simply press sync on the top of the controller to instantly complete the connection.

How do I check for the latest firmware?

- Our firmware updates will be listed on the controller's product page on our website ([RetroFighters.com](https://retrofighters.com))

CUSTOMER SERVICE

We strive to make our fellow gamers happy. If you experience any issues with this product please contact us directly. We are here to help and will make it right! You email us at:

SUPPORT@RETROFIGHTERS.COM 

Documents / Resources



[RETRO FIGHTERS D6 Wireless Gamepad](#) [pdf] User Guide

D6, D6 Wireless Gamepad, D6, Wireless Gamepad, Gamepad

References

- [User Manual](#)

[Manuals+](#), [Privacy Policy](#)

This website is an independent publication and is neither affiliated with nor endorsed by any of the trademark owners. The "Bluetooth®" word mark and logos are registered trademarks owned by Bluetooth SIG, Inc. The "Wi-Fi®" word mark and logos are registered trademarks owned by the Wi-Fi Alliance. Any use of these marks on this website does not imply any affiliation with or endorsement.