



RETEKESS TD107 Motion Sensor Doorbell with Customized Voice Instructions

[Home](#) » [RETEKESS](#) » RETEKESS TD107 Motion Sensor Doorbell with Customized Voice Instructions 

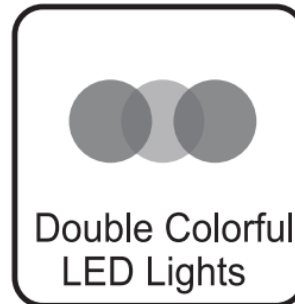
RETEKESS

Motion Sensor Doorbell with Customized Voice Instructions



Model TD107

- Welcome guests/doorbell, alarm, motion sensor lighting 3 in 1 design, welcome guests in the daytime, guard against theft or lighting in the night.
- No need plug-in card, built-in U disk, DIY voice or recording, mini USB interface connected to the computer to download.
- Support WAV and MP3 formats, 40mm loudspeakers, play warning notes or promotional advertisements or store names, much clearer and louder
- AAA batteries/ Rechargeable batteries/Micro USB power interface to supply power.



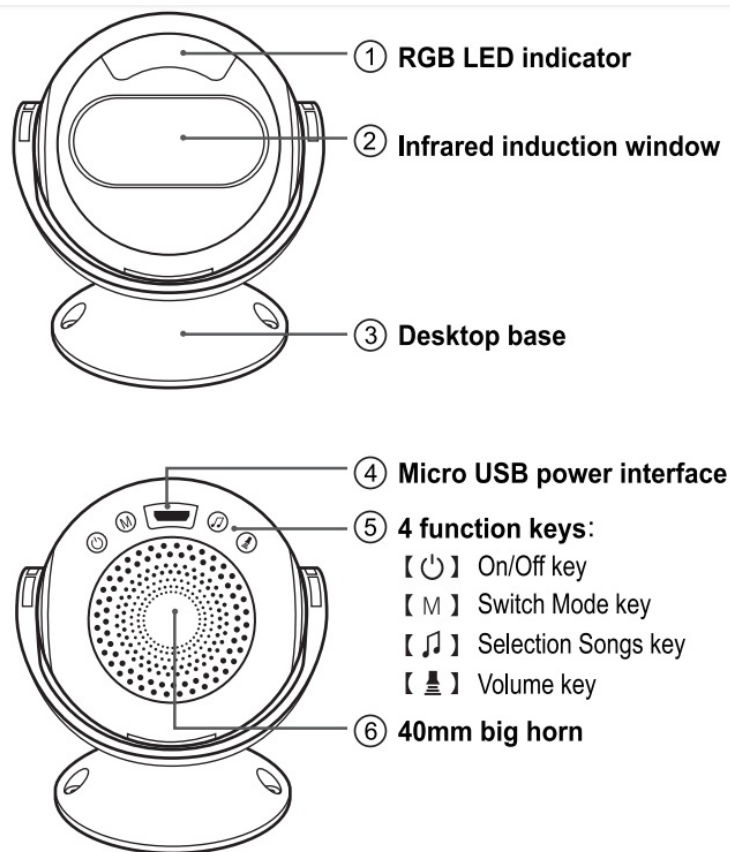
Suggestions for application: Banks, subway stations, schools and other public places, convenience stores, companies, families, etc., More uses waiting for you to explore!

Contents

- [1 Apperance structure](#)
- [2 Function Description:](#)
- [3 FCC Requirements:](#)
- [4 Safety Operation](#)
- [5 Documents / Resources](#)
- [6 Related Posts](#)

Apperance structure

1.1 Alarm host



Function Description:

2.1 Install batteries

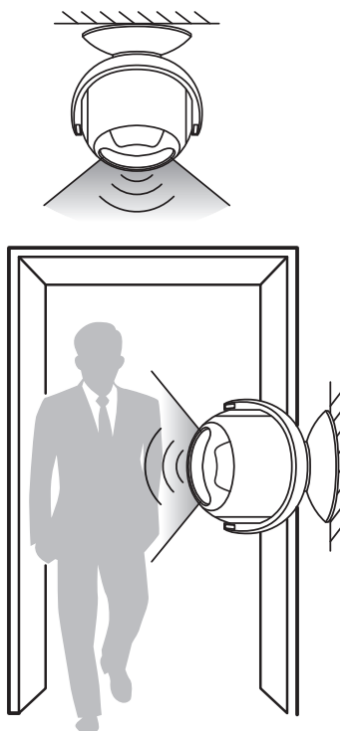
2.1.1 Install 3pcs AAA batteries or rechargeable Ni MH battery, please pay attention to the polarity of the battery, it is strictly forbidden to mix old and new batteries, common batteries, and Ni MH rechargeable batteries.

2.1.2 After the battery is installed, the LED flashes and prompts, indicating that the battery is successfully installed.

2.1.3 Alkaline batteries are recommended to use, other types will shorten standby time and lower the alarm volume. Ni MH rechargeable batteries can also be used. This product can automatically identify the type of battery, charging the rechargeable battery when accessing the USB power supply. It can also be powered directly by a Micro USB 5V power supply. DC power and the battery can automatically identify and switch.

2.2 Installation

2.2.1 Install the welcome doorbell in the ceiling or aisle of the entrance where customers and intruders go back and forth. If used to guard against theft, please install in the passageway where is easily intruded by thieves. Installation by screws will be more firm than a double-sided tap which requires a tidy and smooth surface.



This product passively detects the change of infrared signal which is released from the human temperature about of 37 C . After being fixed, the direction of the infrared induction window is adjusted according to the needs (and it needs to use “wide-angle infrared induction fan” to scan the pedestrian).

This product is only used indoor, please do not keep it exposed to the sun and rain. Had better not install it in the areas of the air-conditional, fan where the temperature is changing.

2.2.2 After installation, press turn on the key of the host to enter into welcome reminder mode, adjust the detection angle of the infrared induction window, try to ensure that the people come in from different positions can be detected, and play the sound by repeating tests.

2.3 Use and operation

2.3. 1 Three function modes:

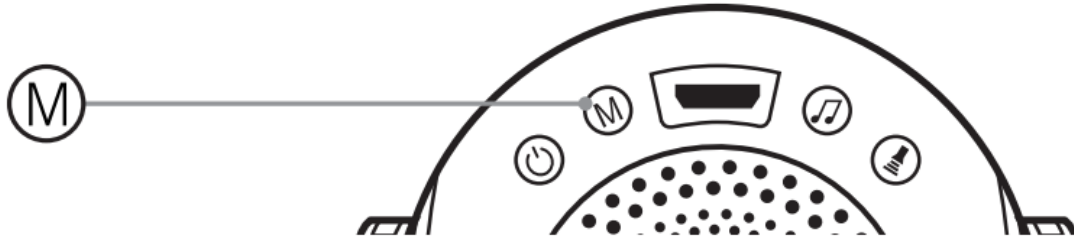
	Welcome guests I Doorbell Mode	Alarm	Motion sensor lighting Mode
Model reminder	Play current music or voice	Alarm one time	No sound Lighting for 5 seconds
Sound effect when the detector is triggered	Play current music or voice	Alarm for 30 seconds	— —
Light effect when the detector is triggered	Greenlight	Flashlight	Bright monochrome light for 2 minutes Flashing for 30 seconds
On I Off	Press I 0 I of the host to turn on /off the device.		
The function of fJ key	Cyclic voice for option	— —	Cyclic 8 kinds of lamp color for option
Trigger response	Every time turn on the device, the host will preheat and self-check. In the process of self-inspection, the LED indicator will blink and the self-inspection will be finished after the LED indicator went out. (No breathing lights in motion sensor lighting mode)		
Disarm and mute interrupt function	Disarm function: When the alarm is triggered, in the 30-second process of a continuous alarming, press IC) I of the host to disarm and make the device in turn off state		
	Mute interrupt function: When the device is triggered in other situations, in the process of playing sound or lighting, press any key to end the sound and lighting.		

2.3.2 Memory function when power off

Power-on default in maximum volume, the songs, and the volume will be remembered. Power on after power off, it will be restored to the mode before power off. Hint music will only play the first 10 seconds.

2.3.3 Switch Mode

Turn on the host, short press I M I key to switch mode, Welcome/Doorbell—Alarm—Motion sensor lighting, 3 modes in cyclic shift Warmly tip: Press the I M I button again within 3 seconds after the host sounds current mode hint to switch mode.



3. Download voice:

3.1 Connect to the computer via Micro USB cable. 3.2 Wait for the computer to test the U disk, because of it is the software simulates the U disk, please wait patiently. If the test is not successful after a long time, please refresh it manually. After the test is successful, click on the “My Computer” icon and open the removable disk icon. (Incompatible with 10S.) **Shown in the following figure:**



3.3 Copy the prepared WAV or MP3 format sound into the mobile disk. The storage space of the mobile disk is 3.5MB. Please pay attention to the size of the sound file.

3.4 After the copy is completed, pop up the disk, unplug the USB cable, install the host on the base.

Note: This product does not support hot drawing. After copying the files, please disconnect the USB cable after using the system U disk pop-up function. Otherwise, it may damage the data, special circumstances may damage the chip. (If the data is damaged, please format it.)

4. Replace batteries and Charging prompt

4.1 When the sound becomes smaller or you hear a low battery indication sound when you switch mode, please replace batteries in time, or all functions can't be realized.

4.2 When charging the battery is in low battery, please connect to USB power to charge. When the electricity is full, it will automatically stop charging. Charging in a power-off state, there will be a red light prompt that is charging, when the electricity is full, the red light will be extinguished automatically.

5. Parameters

5.1 Power supply of the host: 3*AAA alkaline batteries or Rechargeable MA Ni MH battery or Micro USB

5.2 Battery lifespan: 1-2 months(Base on ringing 30 times per day, specific depending on the usage.).

5.3 Infrared Carrier Frequency: 38khz

5.4 Working temperature: -10-33 C

5.5 Operating humidity:<80%

5.6 Storage Temperature: -20 C-+70 C

RF ENERGY EXPOSURE AND PRODUCT SAFETY GUIDE



Before using this radio, read this guide which contains important operating instructions for safe usage and RF energy awareness and control for compliance with applicable standards and regulations.

This radio uses electromagnetic energy in the radio frequency (RF) spectrum to provide communications between two or more users over a distance. RF energy, which when used improperly, can cause biological damage.

All Reteless radios are designed, manufactured, and tested to ensure they meet government-established RF

exposure levels. In addition, manufacturers also recommend specific operating instructions to users of the radios. These instructions are important because they inform users about RF energy exposure and provide simple procedures on how to control it. Please refer to the following websites for more information on what RF energy exposure is and how to control your exposure to assure compliance with established RF exposure limits: <http://www.who.int/en/>

Local Government Regulations

When radios are used as a consequence of employment, the Local Government Regulations requires users to be fully aware of and able to control their exposure to meet occupational requirements. Exposure awareness can be facilitated by the use of a product label directing users to specific user awareness information. Your Reteless radio has an RF Exposure Product Label. Also, your Reteless user manual or separate safety booklet includes information and operating instructions required to control your RF exposure and to satisfy compliance requirements.

Radio License (if appropriate)

Governments keep the radios in classification, business radios operate on radio frequencies that are regulated by the local radio management departments (FCC, ISSED, OFCOM, ANFR, BFTK, Bundesnetzagentur...). To transmit on these frequencies, you are required to have a license issued by them. For the detailed classification and the use of your radios, please contact the local government radio management departments.

Use of this radio outside the country where it was intended to be distributed is subject to government regulations and may be prohibited.

Unauthorized modification and adjustment

Changes or modifications not expressly approved by the party responsible for compliance may void the user's authority granted by the local government radio management departments to operate this radio and should not be made. To comply with the corresponding requirements, transmitter adjustments should be made only by or under the supervision of a person certified as technically qualified to perform transmitter maintenance and repairs in the private land mobile and fixed services as certified by an organization representative of the user of those services. Replacement of any transmitter component (crystal, semiconductor, etc.) not authorized by the local government radio management departments equipment authorization for this radio could violate the rules.

FCC Requirements:

- This device complies with part 15 of the FCC Rules. Operation is subject to the following two conditions:
 - 1) This device may not cause harmful interference, and
 - 2) this device must accept any interference received, including interference that may cause undesired operation.
- This equipment has been tested and found to comply with the limits for a Class B digital device, pursuant to Part 15 of the FCC Rules. These limits are designed to provide reasonable protection against harmful interference in a residential installation.

This equipment generates uses and can radiate radio frequency energy and, if not installed and used in accordance with the instructions, may cause harmful interference to radio communications. However, there is no guarantee that interference will not occur in a particular installation. If this equipment does cause harmful interference to radio or television reception, which can be determined by turning the equipment off and on, the user is encouraged to try to correct the interference by one or more of the following measures:

- Reorient or relocate the receiving antenna.
- Increase the separation between the equipment and receiver.
- Connect the equipment into an outlet on a circuit different from that to which the receiver is connected.
- Consult the dealer or an experienced radio/TV technician for help.

CE Requirements:

- (Simple EU declaration of conformity) Henan Eshow Electronic Commerce Co.,Ltd declares that the radio equipment type is in compliance with the essential requirements and other relevant provisions of RED Directive 2014/53/EU and the ROHS Directive 2011/65/EU and the WEEE Directive 2012/19/EU; the full text of the EU declaration of conformity is available at the following internet address: www.retekess.com.

- Disposal



The crossed-out wheeled bin symbol on your product, literature, or packaging reminds you that in the European Union, all electrical and electronic products, batteries, and accumulators (rechargeable batteries) must be taken to designated collection locations at the end of their working life. Do not dispose of these products as unsorted municipal waste. Dispose of them according to the laws in your area.

IC Requirements:

License-exempt radio apparatus This device contains license-exempt transmitter(s)/receiver(s) that comply with Innovation, Science, and Economic Development Canada's license-exempt RSS(s). Operation is subject to the following two conditions:

1. This device may not cause interference.
2. This device must accept any interference, including interference that may cause undesired operation of the device.

RF Exposure Information

- DO NOT operate the radio without a proper antenna attached, as this may damage the radio and may also cause you to exceed RF exposure limits. A proper antenna is an antenna supplied with this radio by the manufacturer or an antenna specifically authorized by the manufacturer for use with this radio, and the antenna gain shall not exceed the specified gain by the manufacturer declared.
- DO NOT transmit for more than 50% of total radio use time, more than 50% of the time can cause RF exposure compliance requirements to be exceeded.
- During transmissions, your radio generates RF energy that can possibly cause interference with other devices or systems. To avoid such interference, turn off the radio in areas where signs are posted to do so.
- The device complies with RF specifications when the device is used at 5mm from your body. Third-party belt clips, holsters, and similar accessories used by this device should not contain any metallic components. Body-worn accessories that do not meet these requirements may not comply with RF exposure requirements and should be avoided.
- DO NOT operate the transmitter in areas that are sensitive to electromagnetic radiation such as hospitals, aircraft, and blasting sites.

Avoid Choking Hazard



Small Parts. Not for children under 3 years.

Protect your hearing:



WARNING

- Use the lowest volume necessary to do your job.
- Turn up the volume only if you are in noisy surroundings.
- Turn down the volume before adding a headset or earpiece.
- Limit the amount of time you use headsets or earpieces at high volume.
- When using the radio without a headset or earpiece, do not place the radio's speaker directly against your ear
- Use care with the earphone may be possible excessive sound pressure from earphones and headphones can

cause hearing loss.



Note: Exposure to loud noises from any source for extended periods of time may temporarily or permanently affect your hearing. The louder the radio's volume, the less time is required before your hearing could be affected. Hearing damage from loud noise is sometimes undetectable at first and can have a cumulative effect.

Avoid Burns



WARNING

Antennas

- Do not use any portable radio that has a damaged antenna. If a damaged antenna comes into contact with the skin when the radio is in use, a minor burn can result. Batteries (If appropriate)
- When the conductive material such as jewelry, keys, or chains touch exposed terminals of the batteries, may complete an electrical circuit (short circuit the battery) and become hot to cause bodily injury such as burns. Exercise care in handling any battery, particularly when placing it inside a pocket, purse, or another container with metal objects Long transmission
- When the transceiver is used for long transmissions, the radiator and chassis will become hot.

Safety Operation



WARNING

Forbid

- Do not use chargers outdoors or in moist environments, use only in dry locations/conditions.
- Do not disassemble the charger, which may result in a risk of electrical shock or fire.
- Do not operate the charger if it has been broken or damaged in any way.
- Do not place a portable radio in the area over an airbag or in the airbag deployment area. The radio may be propelled with great force and cause serious injury to occupants of the vehicle when the airbag inflates.

To reduce risk

- Pull by the plug rather than the cord when disconnecting the charger.
- Unplug the charger from the AC outlet before attempting any maintenance or cleaning.
- Contact Reteless for assistance regarding repairs and service.
- The adapter shall be installed near the equipment and shall be easily accessible
- Risk of explosion if the battery is replaced by an incorrect type. Dispose of used batteries according to the instructions.
- The adapter shall be installed near the equipment and shall be easily accessible.
- The plug is considered as a disconnect device of the adapter.
- The operating temperature of the EUT can't exceed the specified range.

Approved Accessories



WARNING

- This radio meets the RF exposure guidelines when used with the Reteless accessories supplied or designated for the product. The use of other accessories may not ensure compliance with the RF exposure guidelines and may violate regulations.
- For a list of Reteless-approved accessories for your radio model, visit the following website:
<http://www.Retekess.com>.

Guarantee

Model Number:.....
 Serial Number:.....
 Purchasing Date:.....
 Dealer:.....
 Telephone:.....
 User's Name:.....
 Telephone:.....
 Country:.....
 Address:.....
 Post Code:.....
 Email:.....

Remarks:

1. This guarantee card should be kept by the user, no replacement if lost.
2. Most new products carry a two-year manufacturer's warranty from the date of purchase.
3. The user can get a warranty and after-sales service as below:
 Contact the seller where you buy.
 Products Repaired by Our Local Repair Center
4. For warranty service, you will need to provide a receipt proof of purchase from the actual seller for verification

Exclusions from Warranty Coverage:

1. To any product damaged by accident.
2. In the event of misuse or abuse of the product or as a result of unauthorized alterations or repairs.
3. If the serial number has been altered, defaced, or removed.



Henan Eshow Electronic Commerce Co., Ltd.
 Add: 7/F, Sanjiang Building, No.170 Nanyang Road, Huiji District,
 Zhengzhou, Henan, China
 EU Importer: Germany Retevis Technology GmbH
 Address: Uetzenacker 29, 38176 Wendeburg
 Facebook: [facebook.com/Retekess.ru](https://www.facebook.com/Retekess.ru)

E-mail: support@retekess.com.ru

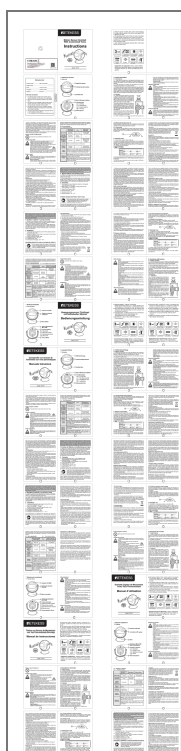
Web: retekess.com.ru



MADE IN CHINA



Documents / Resources



[RETEKESS TD107 Motion Sensor Doorbell with Customized Voice](#) [pdf] Instructions

TD107, Motion Sensor Doorbell with Customized Voice, TD107 Motion Sensor Doorbell with Customized Voice