



Restore Solutions Axial Fan Portable and Lightweight Solution User Manual

[Home](#) » [Restore Solutions](#) » Restore Solutions Axial Fan Portable and Lightweight Solution User Manual 

Contents

- [1 Restore Solutions Axial Fan Portable and Lightweight Solution](#)
- [2 INSTRUCTION MANUAL SAVE THESE INSTRUCTIONS FOR FUTURE REFERENCE](#)
- [3 OPERATION](#)
- [4 MAINTENANCE](#)
- [5 PERIODIC MAINTENANCE](#)
- [6 SPECIFICATIONS](#)
- [7 GROUNDING INSTRUCTIONS:](#)
- [8 TROUBLESHOOTING](#)
- [9 how to fix](#)
- [10 Documents / Resources](#)
- [11 Related Posts](#)



Restore Solutions Axial Fan Portable and Lightweight Solution



INSTRUCTION MANUAL

SAVE THESE INSTRUCTIONS FOR FUTURE REFERENCE

READ AND UNDERSTAND ALL WARNINGS AND INSTRUCTIONS BEFORE USING THIS AIR MOVER!

- This appliance is not intended for use by persons (including children) with reduced physical, sensory or mental capabilities, or lack of experience and knowledge, unless they have been given supervision or instruction concerning use of the appliance by a person responsible for their safety.
- Children should be supervised to ensure that they do not play with the appliance.
- If the supply cord is damaged, it must be replaced by the manufacturer, its service agent or similarly qualified persons in order to avoid a hazard
- Ensure that the fan is switched off from the supply mains before removing the guard.

WARNING I To reduce the risk of fire, electric shock, or injury:

1. Read the Manual carefully and completely before attempting to operate the unit. This manual has important information for the safe operation of the machine. Following the recommendations outlined in it will assure years of safe and reliable use from your unit.
2. Improper connection of the equipment ground conductor can result in a risk of fire, electrical shock or personal injury. Always use a properly grounded electrical system connected to the electrical grid. For maximum protection against electrical shock, use a circuit that is protected by a ground fault interrupter. Check with a qualified electrician or electrician to determine if you are in doubt as to whether your unit is properly grounded. Do not use a unit with a damaged cord or plug.
3. Machine can cause an explosion when near flammable material and vapors. Do not use near or close to flammable materials.

or other fuels, grain dust, solvents, thinners, or other flammable materials. Do not use flammables to clean this machine.

4. Do not immerse or place this unit in standing water. Such use may cause electrical shock. To avoid electrical shock, do not submerge the unit to run it indoors only. Do not expose the unit to freezing temperatures.
5. Do not move or carry the unit when it is turned on. Do not pull or carry by the cord, use the handle, close a door on the cord or pull cord around sharp edges or corners. Keep the cord away from heated surfaces. Do not plug or unplug by pulling on it. To unplug, grasp plug, not the cord. Do not handle plug or a moving part while wet hands.
6. Do not put any object into openings. Do not use with any opening blocked; keep free of dust, lint, hair and anything that may reduce air flow. Keep hair, loose clothing, finger; hold all parts of the body away from openings and moving parts.
7. Turn off all controls before unplugging.
8. Operate unit on a level and stable surface to prevent it from falling and possible injury or damage.
9. Do not drop or throw the unit. Throwing of this type can cause damage to the components and controls.

OPERATION

Plug your air motor into a standard electrical outlet with the correct voltage and amperage. If you are unsure about the outlet, consult your supervisor. Turn the switch and check that the unit operates properly before letting it run.

MAINTENANCE

- inspect the electrical cord and wiring for damage or discoloration
- Inspect for loose fasteners
- Clean the filter on the side and front of the unit
- Lubricate for abnormal sounds
- Keep unit clean

PERIODIC MAINTENANCE

Use compressed air or a vacuum to remove lint and other debris from the motor, fan and blower wheel. Do not use a pressure washer to clean the unit.

SPECIFICATIONS	
VOLTS	240V
POWER	144/192W
CYCLE	50Hz
MAX AIR VOLUME	3199/3733CFM
AMPS LOW/MID/HIGH SPEEDS	0.6/0.8AMPS
WEIGHT	16KGS
SIZE L/W/H	53x33x55cm
SPEED	2 SPEED
CORD LENGTH	5M

GROUNDING INSTRUCTIONS:

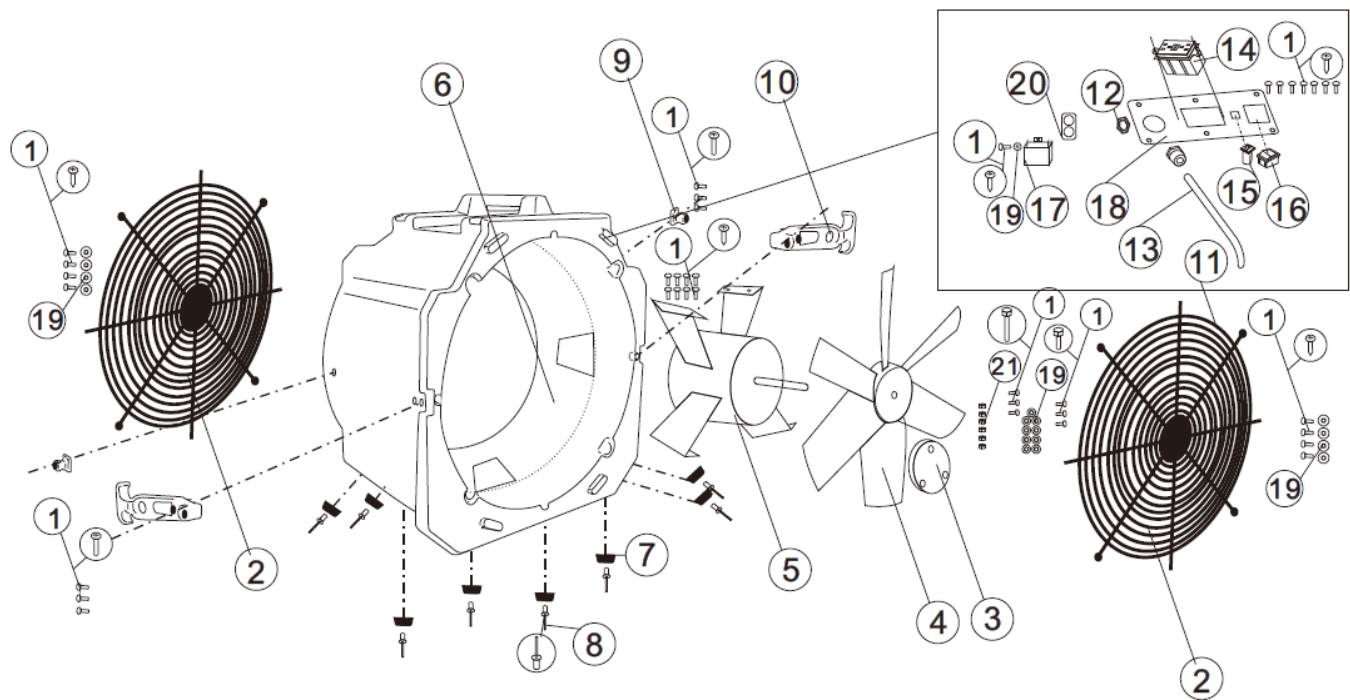
This machine must be grounded. If it should malfunction or break down, grounding provides a path for electric current to reduce the risk of electric shock. This machine is equipped with a cord having an equipment-grounding conductor and grounding plug. The plug must be inserted into an appropriate outlet that is properly installed and grounded in accordance with all local codes and ordinance.

TROUBLESHOOTING

Problem	Cause	Solution
Unit will not run.	<ol style="list-style-type: none"> 1. No power to unit. 2. Switch not on. 3. Switch is faulty. 4. Faulty/broken cord or motor wire 	<ol style="list-style-type: none"> 1. Plug unit in. Check circuit breaker. 2. Place in "ON" position. 3. Replace switch. 4. Perform continuity check, using volt/amp meter. Repair/replace faulty broken wire.
Unit runs but air mover makes loud scraping noise.	<ol style="list-style-type: none"> 1. Unit has been severely jolted causing blower wheel to rub against housing. 2. Unit has been severely jolted causing housing to deform. 	<ol style="list-style-type: none"> 1. Remove motor and replace damaged motor mounts. 2. Replace blower wheel.
Unit runs but vibrates excessively.	<ol style="list-style-type: none"> 1. Severe jolt has bent motor shaft causing unit to be out of balance. 2. Air mover blade damaged. 3. Dirt build up on one side of air mover blade. 	<ol style="list-style-type: none"> 1. Remove and replace motor. 2. Replace blade if necessary. 3. Clean air mover blade.

<p>Unit runs but blower wheel does not turn.</p>	<ol style="list-style-type: none"> 1. Motor bearings are failing or motor has developed an internal electrical fault. 2. Intake grill and/or exhaust grill is obstructed. 3. Excessive duct length. 	<ol style="list-style-type: none"> 1. Replace motor. 2. Remove obstruction. 3. Reduce duct length to recommended maximum
--	--	---

how to fix



MULTI FLOOR FAN

ref#	description	qty
1	screw	36
2	wire grills	2
3	hub	1
4	fan blade	1
5	AC motor	1
6	Multi Floor Fan shell	1
7	rubber foot	8
8	Rivet	8

ref#	description	qty
9	Buckle	2
10	Buckle	2
11	power cord	1
12	nut,hex	1
13	strain relief-lq tight	1
14	gfcı outlet,female plug	1
15	circuit breaker	1
16	on/off rocker switch,blk	1

ref#	description	qty
17	capacitor	1
18	switch plate	1
19	flat washer	17
20	ply-yarn drill	1
21	nut	6
22		
23		
24		

Documents / Resources

Axial Fan



INSTRUCTION MANUAL
SAVE THESE INSTRUCTIONS FOR FUTURE REFERENCE

[Restore Solutions Axial Fan Portable and Lightweight Solution](#) [pdf] User Manual Axial Fan Portable and Lightweight Solution