



# RESPIRONICS SideStream Reusable Nebulizer Instructions

[Home](#) » [RESPIRONICS](#) » RESPIRONICS SideStream Reusable Nebulizer Instructions 

*RESPIRONICS SideStream Reusable Nebulizer Instructions*



# SideStream<sup>®</sup>

Reusable Nebulizer

Effective delivery • Fast treatment • Easy to use



**LATEX**

**Contents:**

1 SideStream<sup>®</sup> reusable nebulizer,  
mouthpiece and Duratube<sup>™</sup>

Reorder Number: **HS860**

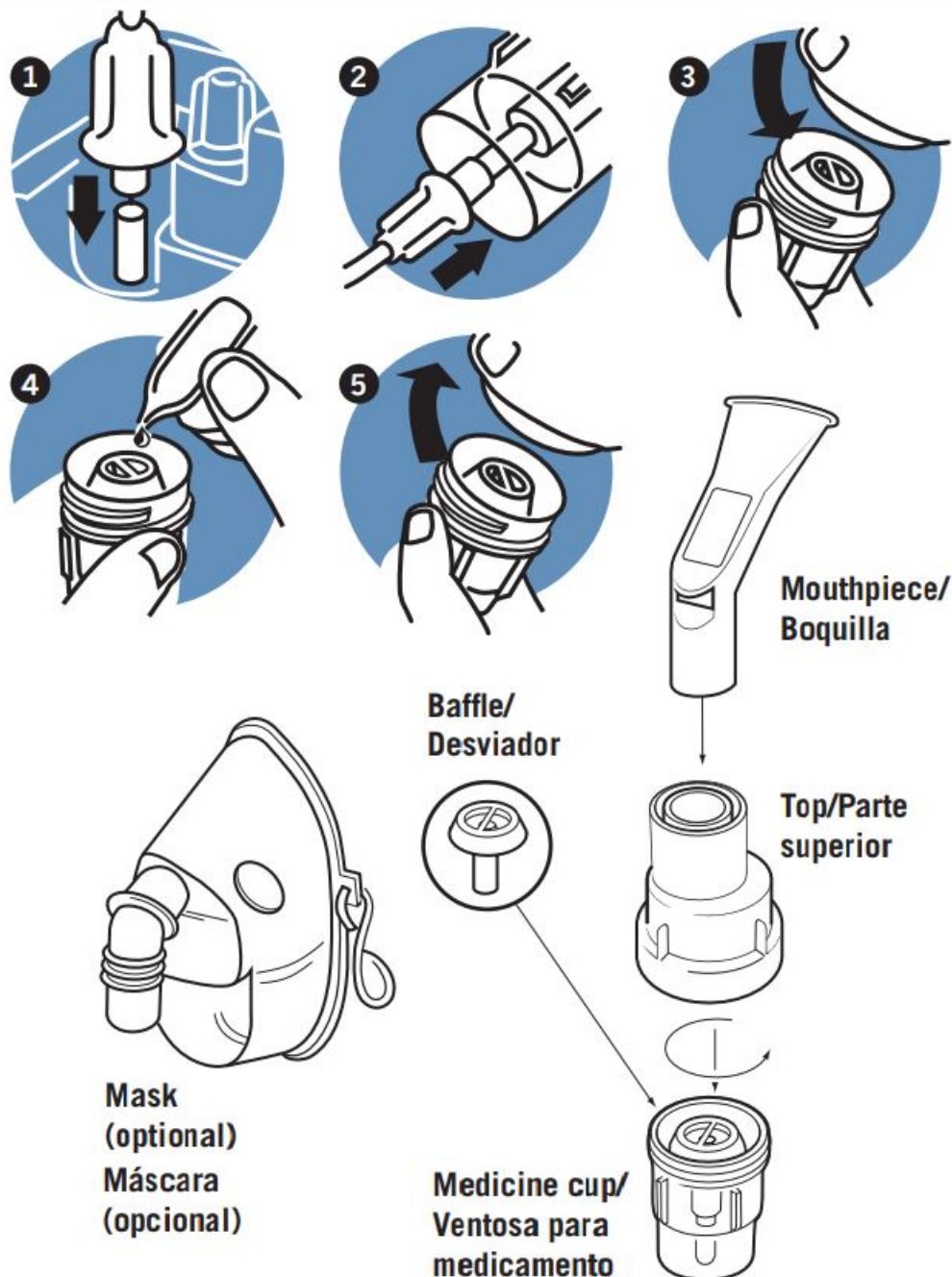
**SINGLE PATIENT USE**

**Caution:** Federal (U.S.A.) law restricts this device  
to sale by or on the order of a physician or licensed  
healthcare professional.

Manufactured in China by Respironics (UK) Ltd.  
for Respironics New Jersey, Inc., Parsippany, NJ 07054

**NDC# 08373-0860-00**





The SideStream is a compressor-driven nebulizer designed to convert liquid medication into aerosol for inhalation by the patient.

#### Contents

- [1 Instructions for Use](#)
- [2 Cleaning Instructions](#)
- [3 Documents / Resources](#)
  - [3.1 References](#)
- [4 Related Posts](#)

## Instructions for Use

**Please carefully read and understand these instructions before using this product.**

If you do not understand any portion of these instructions, contact your healthcare provider or call Respironics Customer Service at 1-800-345-6443 or 1-724-387-4000.

**CAUTION:** This product should only be used under the supervision of a physician or licensed healthcare professional.

### **Upon receipt of your SideStream**

We recommend that you boil your reusable SideStream (except for tubing) in water (minimum 212° F) with 2-3 drops of dishwashing liquid for 10 minutes. This ensures maximum performance.

You should wash your hands before handling medication or the nebulizer.

1. Connect one end of the tubing to the compressor air outlet.
2. Attach the other end of the tubing into the bottom of the medicine cup.
3. Unscrew the top from the medicine cup.
4. Pour your prescribed medication into the medicine cup, 2-10ml fill.
5. Screw the top back onto the medicine cup and connect the mouthpiece/mask. Do not lay the SideStream down on its side, because the medication will spill out.

It is recommended that you replace your SideStream every 6 months.

### **Taking a Treatment**

- To take the treatment, sit in an upright position and relax.
- Switch on the compressor, supply flow to be 6-8l/min.
- Make sure mist is visibly coming from the mouthpiece/mask.
- Take the mouthpiece between your teeth, surround it with your lips and breathe in and out slowly through your mouth or place the mask in position over nose and mouth and breathe slowly in and out through your mouth.
- When the SideStream begins to work intermittently and 'sputters', then the treatment is finished. There is no need to nebulize every drop of your medication, there will always be a small amount left in the medicine cup.

### **Cleaning Instructions**

#### **CAUTION:**

- **Do not try to remove the red jet from the medicine cup. This is permanently attached.**
- **Do not towel dry the unit and never use a cleaning brush or put sharp objects into the jet holes or baffles as this will damage the nebulizer.**
- **SideStream Reusable is not suitable for use in a ventilator circuit.**
- **Do not remove top when connected to gas supply.**
- **Use of 22mm male connectors may reduce output rate.**

#### **AFTER EVERY USE**

1. Disconnect the SideStream from the tubing. Unscrew the top from the medicine cup, rinse out the nebulizer and refill with clean water. Reassemble top and medicine cup, reconnect the tubing and run SideStream again for a few seconds to flush out any drug trapped in the nebulizer jets.
2. Take apart the nebulizer.
3. Disconnect tubing from the medicine cup.

4. Wash all items (except tubing) in either hot soapy water or contained within a basket on the top rack of your dishwasher.
5. Rinse all parts in clean water for 2 minutes.
6. Shake off excess water and allow to air dry. Do not towel dry.
7. Reassemble and store the SideStream in a clean place when not in use.

## ONCE EACH WEEK

1. Disassemble the nebulizer.
2. Boil the SideStream (except tubing) in water with 2-3 drops of dishwashing liquid for 10 minutes.
3. Rinse all parts in clean water for 2 minutes.
4. Shake off excess water and allow to air dry. Do not towel dry.
5. Reassemble and store SideStream in a clean place when not in use.

## WARNING

1. **Clogged jets or improper assembly may prevent proper delivery of medication.**
2. **To reduce the risk of infection, clean and disinfect the nebulizer between treatments.**



1037726 REV4 07/08 bdc 10098

Respironics New Jersey, Inc. 5 Wood Hollow Road, Parsippany, NJ 07054 USA [www.respironics.com](http://www.respironics.com)

© 2008, Respironics, Inc. and its affiliates. All rights reserved.

Manufactured in China by Respironics (UK) Ltd. for Respironics New Jersey, Inc.

SideStream is a registered trademark of Respironics, Inc. and its affiliates.

## Documents / Resources



[RESPIRONICS SideStream Reusable Nebulizer](#) [pdf] Instructions  
SideStream, Reusable Nebulizer

## References

- [Choose your country/language | Philips Respironics](#)