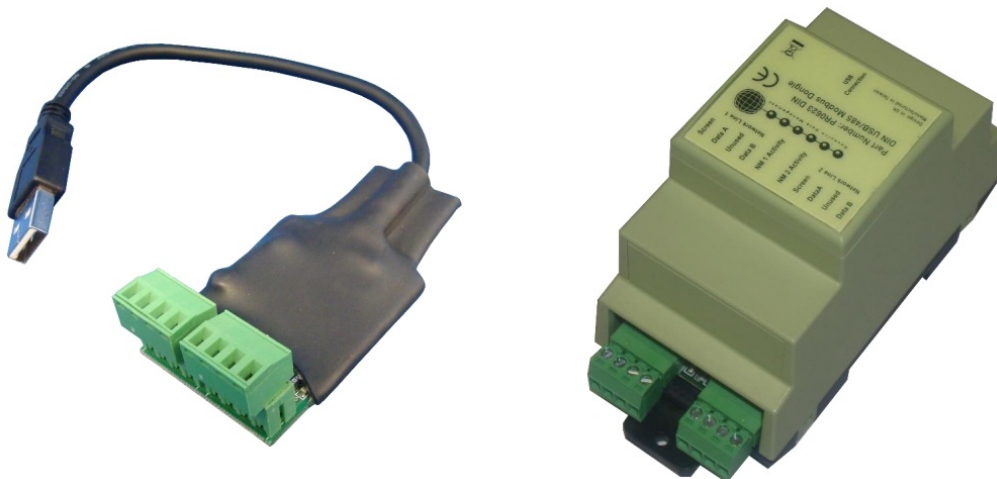


Resource Data Management RS485 Modbus Interface User Guide

[Home](#) » [Resource Data Management](#) » Resource Data Management RS485 Modbus Interface User Guide 

Resource Data Management RS485 Modbus Interface



Contents

- [1 USB to RS485 Modbus® Interface](#)
- [2 RS485 Configuration](#)
- [3 Specifications](#)
- [4 Adding a Modbus Device](#)
- [5 Intuitive Plant TDB](#)
- [6 Disclaimer](#)
- [7 Revision History](#)
- [8 Group Offices](#)
- [9 Documents / Resources](#)
 - [9.1 References](#)
- [10 Related Posts](#)

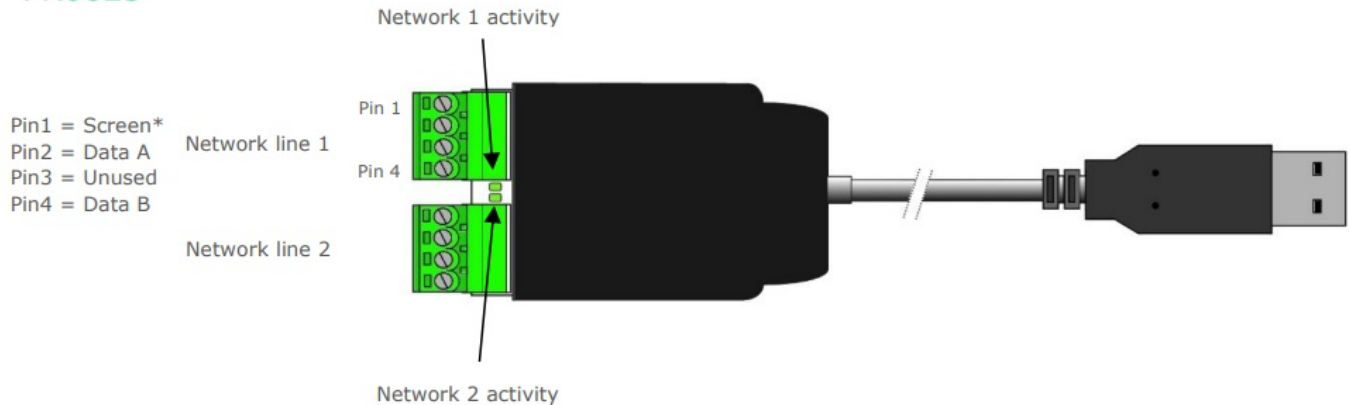
Resource Data Management

Modbus network support can be enabled using the RDM USB to RS485 Modbus network adaptor, part number PR0623/ PR0623 DIN. A single adaptor is supported by the DMTouch and allows for two RS485 Modbus networks, with up to 32 devices on each network line. Similarly when used in conjunction with the intuitive plant TDB, it can also support the two network lines with 32 devices on each.

Support is provided for a range of Modbus devices and new devices are being added continuously. Contact RDM Technical support to obtain the most up to date list of supported devices.

Note: This feature requires Data Manager software version V1.53.0 or above.

PR0623



* Optional dependent on application

Mechanical

Dimensions 35 x 22 x 260mm

Weight 50g (1.7 oz)

PR0623-DIN



Mechanical

Dimensions 112 x 53 x 67mm

Weight 110g (3.8 oz)

RS485 Configuration

Note the RS485 configuration defaults of the Adapters are the following:

Baud rate 9600

Data bits 8

Parity No

Stop Bits 1

When connected to a DMTouch with software V3.1 or above or an Intuitive TDB with software V4.1 or above the adapter can be configured with the following set up.

Baud Rate	Data Bits	Parity	Stop Bits
1200	8	E	1
1200	8	N	2
2400	8	E	1
2400	8	N	2
4800	8	E	1
4800	8	N	2
9600	8	E	1
9600	8	N	2
19200	8	E	1
19200	8	N	2
38400	8	E	1
38400	8	N	2

Specifications

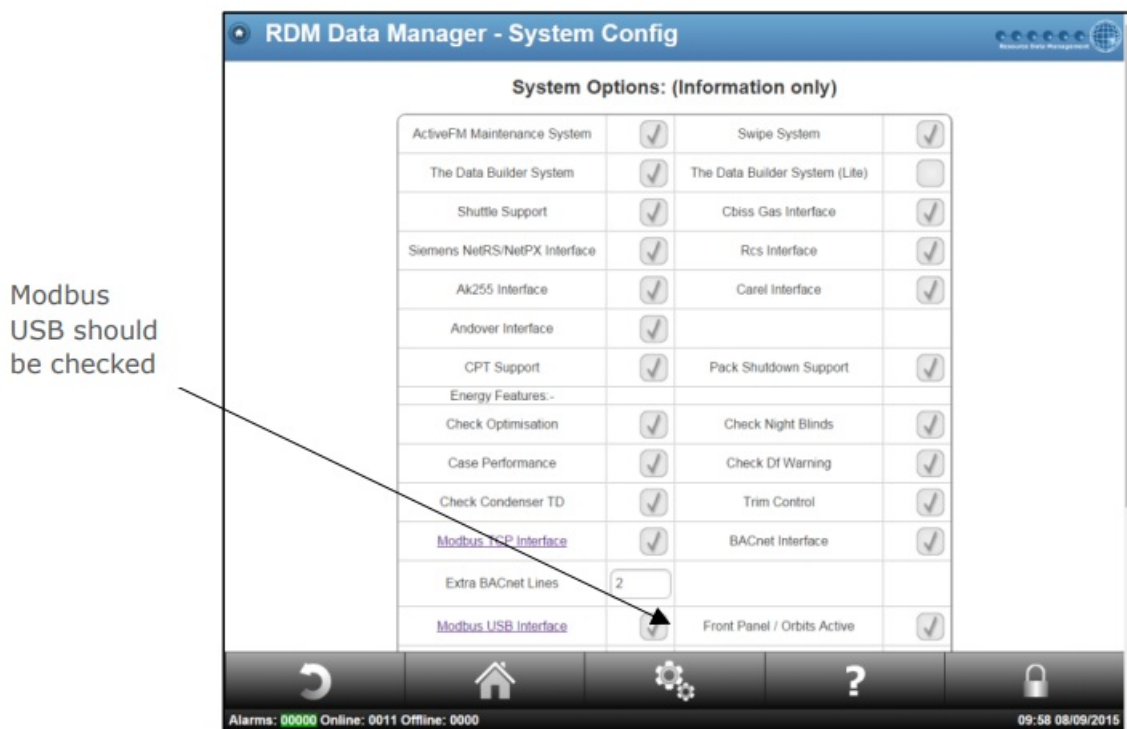
DC Voltage 5V

Rated Current 0.1A (USB Powered)

Adding a Modbus Device

DMTouch

On the DMTouch the adapter/ software needs to be activated before it will communicate to the Modbus devices. Please consult RDM sales for activation.



When activated, it will open a number of useable 'templates' for devices to communicate with the DMTouch. Currently the following Modbus® devices are supported:

Modbus® Energy Meters	SIRIO Energy Meter
4MOD Pulse Counter	Socomec Diris A20
AcuDC 240	Socomec Diris A40
AEM33 Power Monitor	SPN ILC Energy Meter
Autometer IC970	VIP396 Energy Meter
Carlo Gavazzi EM21	VIP396 Energy Meter (IEEE)
Carlo Gavazzi EM24-DIN	RDM Energy Meter
Carlo Gavazzi WM14	

Compact NSX	
Countis E13, E23, E33, E43, E53	Other Modbus® Devices
Cube 350	Gas Detection
Dent Powerscout Energy meter	CPC Infrared RLDS Unit 1
EMM R4h Energy meter	TQ4200 Mk 11 (16 Chan)
Enviro ENV900	TQ4200 Mk II (24 Chan)
Enviro ENV901	TQ4000 (4 Chan)
Enviro ENV901-THD	TQ4300 (12 Chan)
Enviro ENV903-DR-485	TQ4300 (16 Chan)
Enviro ENV910 Single Phase	TQ8000 (24 Chan)
Enviro ENV910 Three Phase	TQ8000 (16 Chan)
Flash D Power Monitor	TQ8000 (8 Chan)
Flash D Power Monitor (3 Wire)	TQ100 (30 Chan)
ICT Energy Meter EI	Safety Gas Detection System

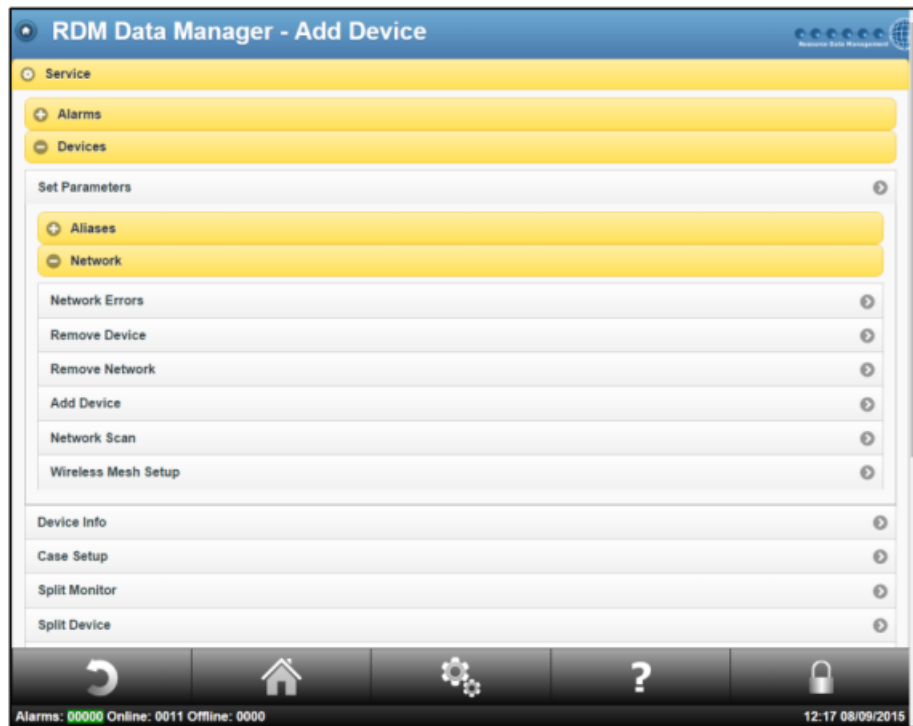
ICT Energy Meter EI Flex – 1phase	Carel Gas Detection
ICT Energy Meter EI Flex – 3phase	MGS Gas 404A Detector
IME Nemo 96HD	Others
Integra 1530	Toshiba FDP3 A/C Interface
Integra Ci3/Ri3 Energy Meter	Polin Bakery Controller
Janitza UMG 604	ISpeed Inverter Drive
Janitza UMG 96S	RESI Dali Lighting System
Kamstrum Multical 602	Sabroe Unisab III
Measurlogic DTS	AirBloc SmartElec2
Nautil 910 Energy Meter	Emerson Control Techniques VSD
Schneider Masterpact NW16 H1	Daikin ZEAS Remote Condensing units 11-26
Schneider PM710	NXL Vacon Inverter Template
Schneider PM750	NSL Vacon Inverter Template
Shark Energy Meter	

Note: Please be aware that the templates listed above were generated on request and designed to the customers' requirements. Please contact RDM Technical Support for information regarding the template. Furthermore, if you have a Modbus® device which is not listed please contact RDM Technical Support.

The USB dongle is not 'plug & play', for the DMTouch to recognise the device, it must be present when powered up (or restarted).

To add a Modbus device, log in and navigate through the following menus:

Service/ Devices/
Network/ Add
Device



Selecting the 'Add device' option, will show the following page:

Within the page, all fields will need to be entered:

Device Type: Select Modbus/ USB device

Name: The six character name which appears on the 'device list'

Alias: Enter an appropriate description for the device

Type: Select the device from the drop down menu.

USB Line: Select either Line 1 or Line 2, depending on the network line the controller is physically connected.

Modbus Address: Enter the Modbus address of the device.

Once details are entered, the Modbus controller will show in the device list.

Intuitive Plant TDB

With the Intuitive Plant TDB, the Modbus USB is already activated. Therefore similar to the dmTouch, the adapter needs to be present when the controller is booting up (restart). Currently, the following Modbus devices are listed within the intuitive controller:

Device	Device
Flash D Power Mon (4 Wire)	Schneider PM710
VIP396 Energy Meter	Flash D Power Mon (3 Wire)
4MOD Pulse Counter	Sirio Energy Meter
Autometer IC970	VIP396 Energy Meter (IEEE)
Socomec Diris A20	Shark Energy Meter
AEM33 Power Monitor	Powerscout
Enviro ENV901	Enviro ENV900
AEM33 Power Monitor	

Note: Please be aware that the templates listed above were generated on request and designed to the customers' requirements. Please contact RDM Technical Support for information regarding the template. Furthermore, if you have a Modbus® device which is not listed please contact RDM Technical Support. To add a Modbus device, log in and navigate through the following menus: Network – Add Device

TDB Intuitive Controller 2 - Add Controller Resource Data Management

Device type:

Name:

Type:

Modbus address:

Network line:

Within the page, all fields will need to be entered:

Device Type: Select Modbus/ USB device

Name: The six character name which appears on the 'List' page

Type: Select the device from the drop down menu.

Modbus Address: Enter the Modbus address of the device.

Network Line: Select either Line 1 or Line 2, depending on the network line the controller is physically connected.

Once details are entered, the Modbus controller will appear within the 'List' of devices under Network – List.

TDB Intuitive Controller 2 - Controller List Resource Data Management

Controller	Description	Network	Status
METER1	Shark Energy Meter	Modbus	Normal

Disclaimer

The specifications of the product detailed in this document may change without notice. RDM Ltd shall not be liable for errors or omissions, for incidental or consequential damages, directly or indirectly, in connection with the furnishing, performance or misuse of this product or document

Modbus® is a registered trademark of the Modbus Organisation, Inc.

Revision History

Revision	Date	Changes
1.0	08/09/2015	First document
1.0a	03/05/2017	New documentation format.
1.0b	18/12/2019	Update to US Offices
1.0c	03/02/2022	USB Modbus setup table added

Group Offices

RDM Group Head Office

80 Johnstone Avenue
Hillington Industrial Estate
Glasgow
G52 4NZ
United Kingdom
+44 (0)141 810 2828
support@resourcedm.com

RDM USA

9441 Science Center Drive
New Hope
Minneapolis
MN 55428
United States
+1 612 354 3923
usasupport@resourcedm.com

RDM Asia

Sky Park at One City
Jalan USJ 25/1
47650 Subang Jaya
Selangor
Malaysia
+603 5022 3188
asiatech@resourcedm.com



Visit www.resourcedm.com/support for more information on RDM solutions, additional product documentation and software downloads.


While every effort is made to ensure the information given within this document is accurate, Resource Data Management Ltd shall not be liable for errors or omissions, for incidental or consequential damages, directly or indirectly, in connection with the furnishing, performance or misuse of this product or document. All specifications are subject to change without notice.

See www.resourcedm.com for terms and conditions of sales.

Copyright © Resource Data Management



Documents / Resources

	<p>Resource Data Management RS485 Modbus Interface [pdf] User Guide RS485 Modbus Interface, RS485, Modbus Interface, Interface</p>
---	--

References

- [Resource Data Management](#)
- [Resource Data Management](#)
- [Resource Data Management](#)
- [Technical Support](#)