



RESMED ApneaLink Plus Type III Home Sleep Testing Diagnostic Device User Guide

[Home](#) » [ResMed](#) » RESMED ApneaLink Plus Type III Home Sleep Testing Diagnostic Device User Guide 

Contents

- [1 RESMED ApneaLink Plus Type III Home Sleep Testing Diagnostic Device](#)
- [2 Important Notes](#)
- [3 Installation](#)
- [4 First Step](#)
- [5 System Requirements for Software Operation](#)
- [6 Documents / Resources](#)
 - [6.1 References](#)
- [7 Related Posts](#)

RESMED

RESMED ApneaLink Plus Type III Home Sleep Testing Diagnostic Device

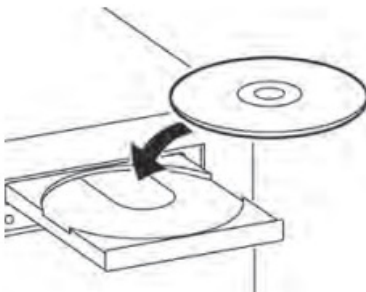


Important Notes

- Do not connect the recorder to your computer until prompted to do so by the ApneaLink software. This is essential in order to ensure the correct installation of the USB driver files and data exchange between the computer and recorder.
- The installation dialog is performed in the language set on your computer.
- The ApneaLink PC software can only process folder and file names according to ISO 8859-1 (Latin Western Europe) and ASCII. Unicode is not supported.
- Once the ApneaLink program has been installed, for data protection reasons the user is responsible for ensuring that use of the program and access to the data is restricted to authorized users.
- If problems should arise with the display of reports, install the latest version of Acrobat Reader for your particular operating system.

Installation

1. Insert the ApneaLink CD into the CD drive of your computer.



The installation process will start automatically.

Note: If installation does not start automatically, double-click the “My computer” icon on the desktop and open the “Setup.exe” file in the CD drive directory.

2. Click “Install ApneaLink.”

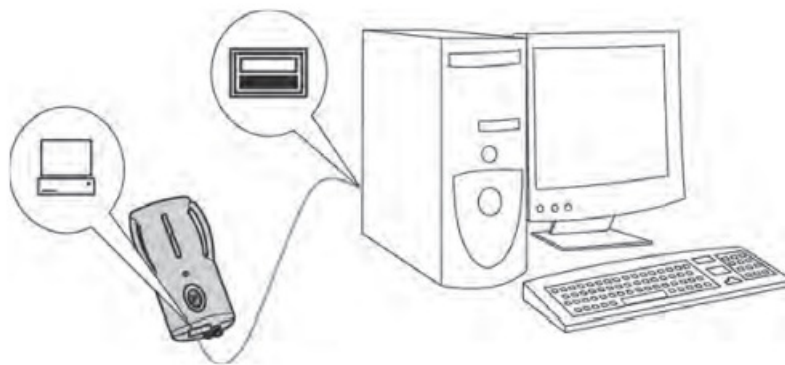
Follow the prompts from the installation software.



Note: The „Install Acrobat Reader“ option is not displayed if the program has already been installed.

3. Connect ApneaLink directly to the USB connection of your PC when asked to.

Note: Do not connect ApneaLink to a USB Hub.



4. After completion of the installation process, click “Exit” to close the dialog box.
5. Remove the installation CD from the CD drive, and store in a safe place.

First Step

- **Starting the Program**



Double-click the ApneaLink icon on the desktop.

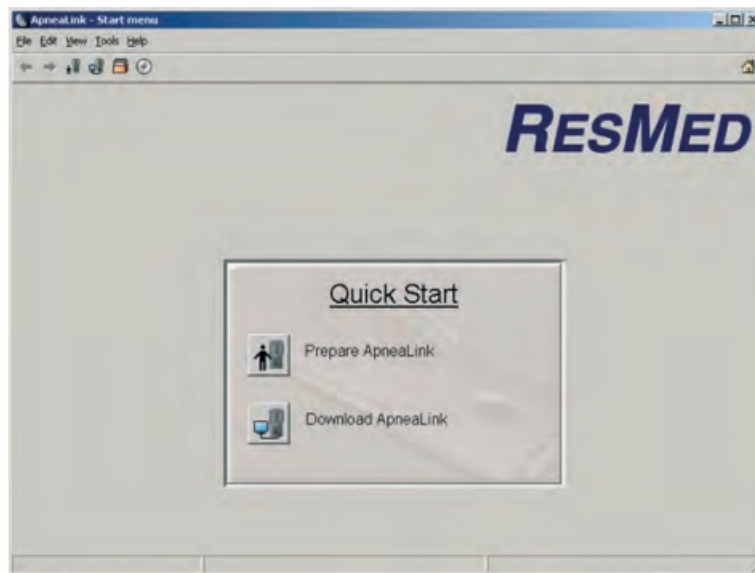
- **Connecting the Recorder to the Computer**

The recorder must be connected to the computer as shown above in order to prepare and download the device.

- **Preparing for Recording**



Click on “Prepare ApneaLink” in the “Quick Start” dialog box.



• Downloading ApneaLink



Click “Download ApneaLink” in the “Quick Start” dialog box. On completion of the download, the program displays the analysis results in a report.

• Viewing Recordings



- The index card box is used for the administration of patient data, recordings, and reports.



- Click this icon to open the report selected in the index card box. The report will show the recording results, including the risk indicator.



- Click this icon to open the recording selected in the index card box. The signal view is used to display the actual signal curve, together with the detected events.

• Further Information

Refer to the Clinical Guide for further instructions on using ApneaLink and the associated software correctly and safely. This manual is available for reference in the “Help” menu. The menu also includes a patient information that can be printed when required.

System Requirements for Software Operation

Software

- Adobe Acrobat Reader (min. Version 4)

The ApneaLink software is compatible with the following operating systems:

- Microsoft Windows 2000 (no Service Pack required)
- Microsoft Windows XP Home/ Professional (no Service Pack required)
- Microsoft Windows Vista (32 bit and 64 bit versions)
- Microsoft Windows 7 (32 bit and 64 bit versions)

Note: Local administrator rights are required for installation under Microsoft Windows 2000, XP, Vista and 7.

Minimum Hardware Requirements

- Pentium II 233 MHz or equivalent processor
- 1 GHz processor for Windows Vista and Windows 7
- 128 MB RAM for Windows 2000 and XP
- 1 GB of system memory for Windows Vista and Windows 7
- 100 MB available hard disk space (sufficient for 6 recordings)
- Open USB port connection
- CD-ROM drive
- Minimum screen resolution: 800×600 pixel, high color (16 bit)

Manufacturer:

ResMed Germany Inc. Fraunhoferstr. 16 82152 Martinsried Germany.

Distributed by:

ResMed Pty Ltd 1 Elizabeth Macarthur Drive Bella Vista NSW 2153 Australia. ResMed Corp 9001 Spectrum Center Boulevard San Diego, CA 92123 USA.


ResMed (UK) Ltd 96 Milton Park Abingdon Oxfordshire OX 14 4RY UK. See www.resmed.com for other ResMed locations worldwide.

For patent information, see www.resmed.com/ip

ApneaLink is a trademark of ResMed R&D Germany GmbH and registered in U.S. Patent and Trademark Office. Adobe, the Adobe logo, and Acrobat Reader are registered trademarks or trademarks of Adobe System Incorporated in the U.S.A. or in other countries. Pentium is a trademark of Intel Corporation. Windows, Windows 2000, Windows XP, Windows Vista and Windows 7 are either registered trademarks or trademarks of Microsoft Corporation in the U.S.A. or in other countries.

© 2012 ResMed Germany Inc. 228574/1 2012-04

Documents / Resources

	<p>RESMED ApneaLink Plus Type III Home Sleep Testing Diagnostic Device [pdf] User Guide ApneaLink Plus, ApneaLink, ApneaLink Plus Type III Home Sleep Testing Diagnostic Device, Type III Home Sleep Testing Diagnostic Device</p>
---	---

References

- [R Sleep apnea and COPD - learn about symptoms and treatment | ResMed](#)
- [R Patienten: Schlafapnoe & Atemwegserkrankungen | ResMed](#)