

Contents [[hide](#)]

- [1 resistex Hyperline Multi 4000K](#)
- [2 Safety Notes](#)
- [3 Maintenance Instructions](#)
- [4 Installation Steps](#)
- [5 Frequently Asked Questions](#)
- [6 Documents / Resources](#)
 - [6.1 References](#)



resistex Hyperline Multi 4000K



Product Specifications

- Model: Hyperline
- Version: V3.2 – 05.24
- Manufacturer: RESISTEX SA
- Power Supply: HO5RN-F U-1000 R2V

Installation Instructions for Hyperline

Safety Notes

- Never work when voltage is present on the luminaire.
- The installation must be performed by a professional installer in compliance with the standards and regulations relating to electrical installations.
- Risk of electrostatic discharges (ESD Norm). Handle with precautions.
- Please observe the notes and steps described in the mounting instructions.

Maintenance Instructions

- Do not use chemicals or abrasive products to clean the fixture.
- Keep these instructions for dismantling or future maintenance.
- You can consult additional information about RESISTEX luminaires on the website www.resistex-sa.com.
- RESISTEX cannot be responsible for any misuse of the product.

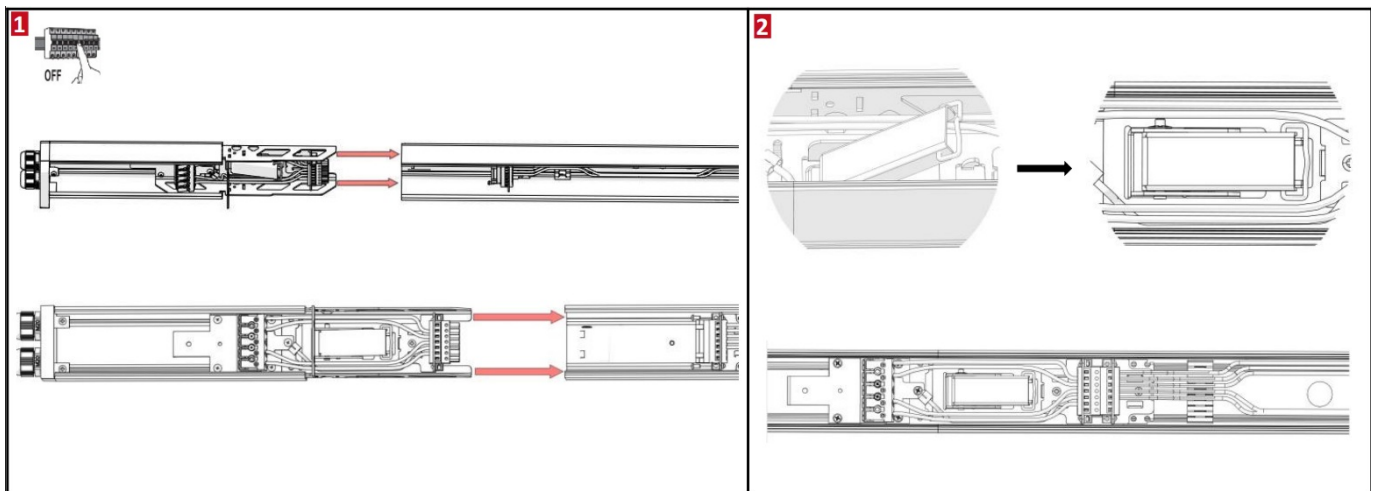
Installation Steps

Step 1

Ensure the power is turned off before starting the installation.

Step 2

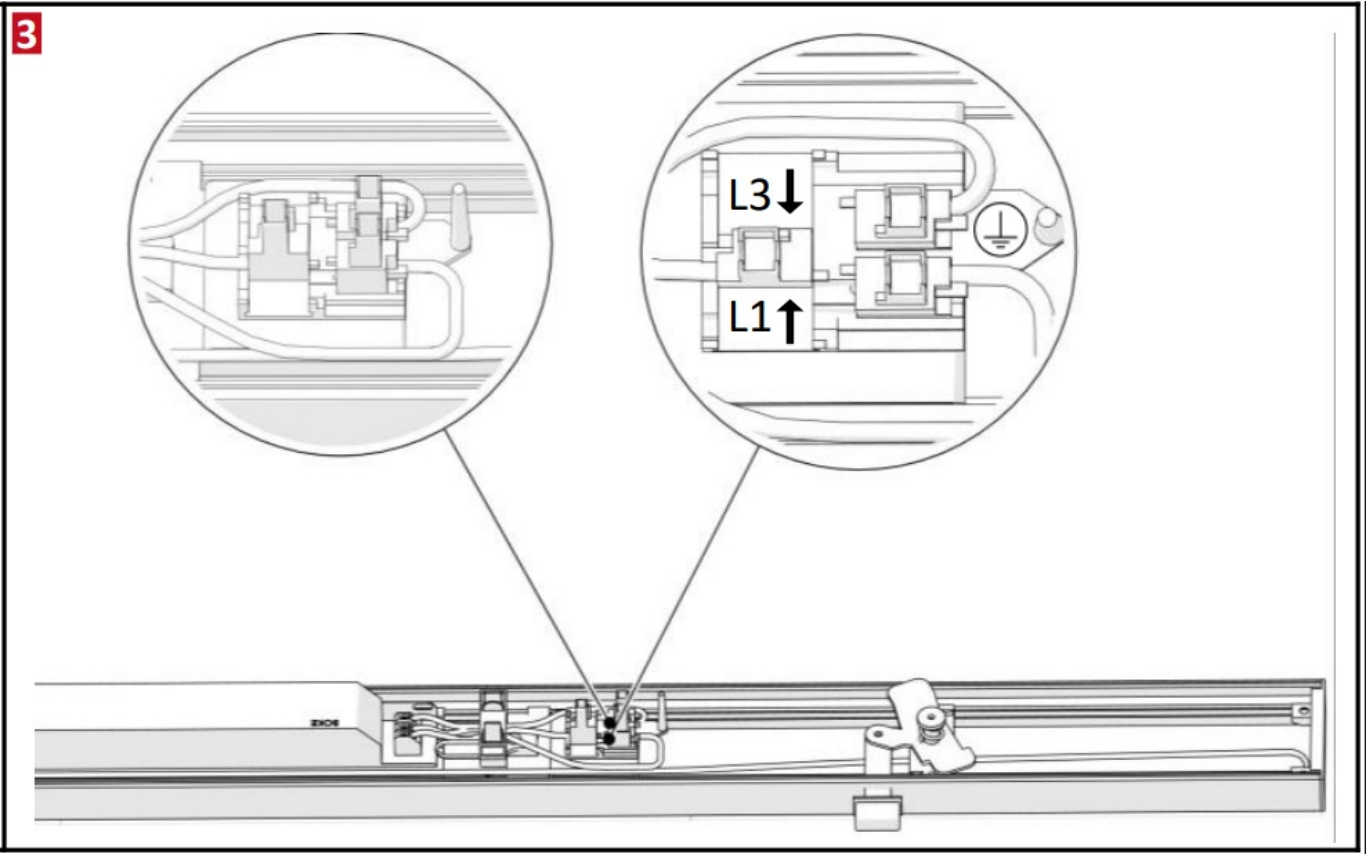
Prepare the mounting surface and align the fixture components as shown in the diagrams.



Step 3

Secure the fixture to the ceiling using appropriate screws and anchors. Ensure a “Click!”

sound to confirm proper installation.



Step 4

Connect the electrical wires according to the wiring diagram. Ensure connections are secure.

Step 5

Set the power settings using the switches provided. Refer to the power table for correct settings.

4

5

BK-BEN060-A0350AS

Pin(W) typ.	Prated(W)	Output Irated(mA)	Voltage(Vdc)	1	2	3	POWER
44.0	40.0	200	100-200	--	--	ON	32W
54.6	50.0	250	100-200	--	ON	--	40W
65.2	60.0	300	100-200	ON	--	--	50W
65.4	60.2	350 ★	100-172	--	--	--	60W

Step 6

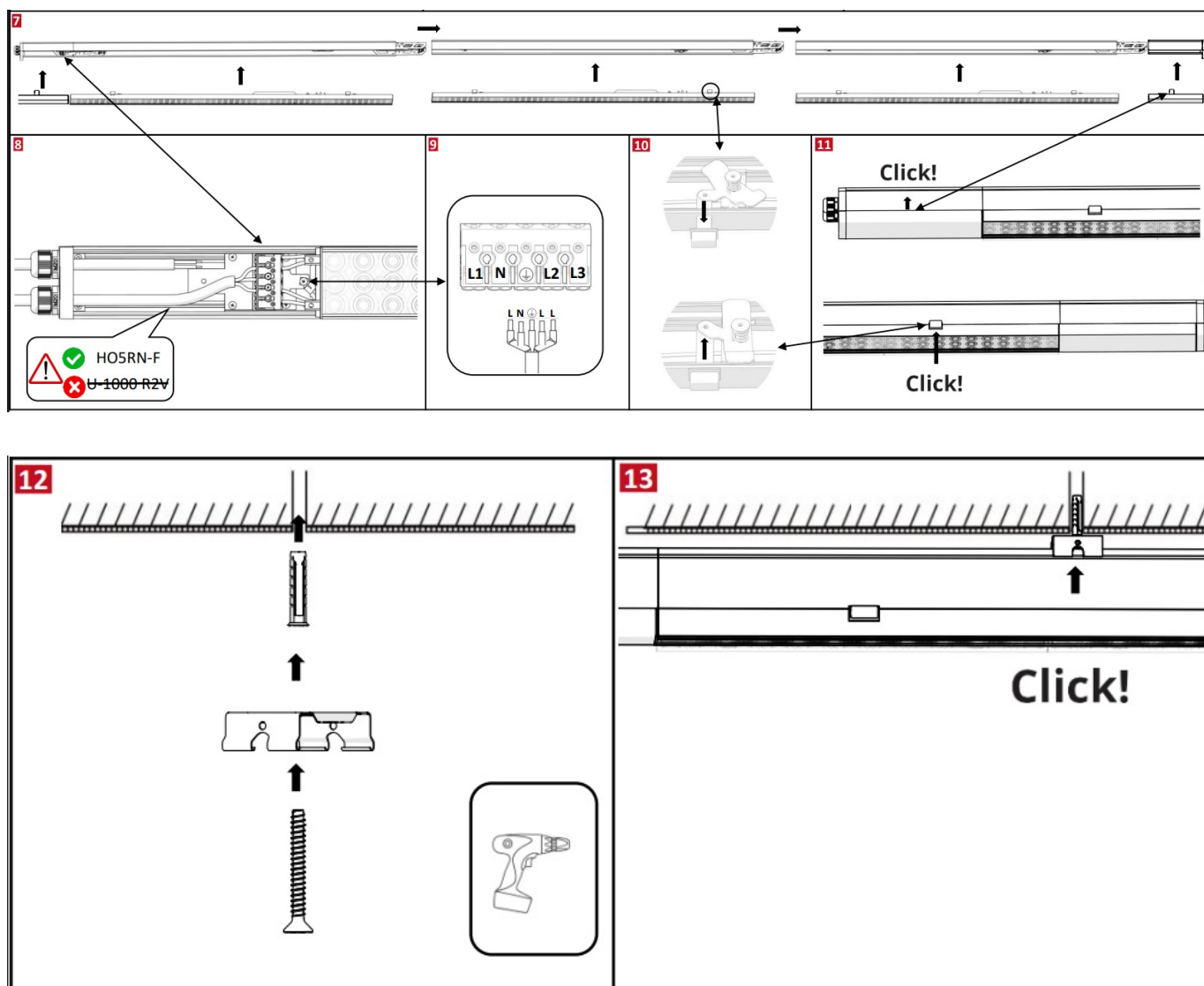
Double-check all connections and ensure the fixture is securely mounted.

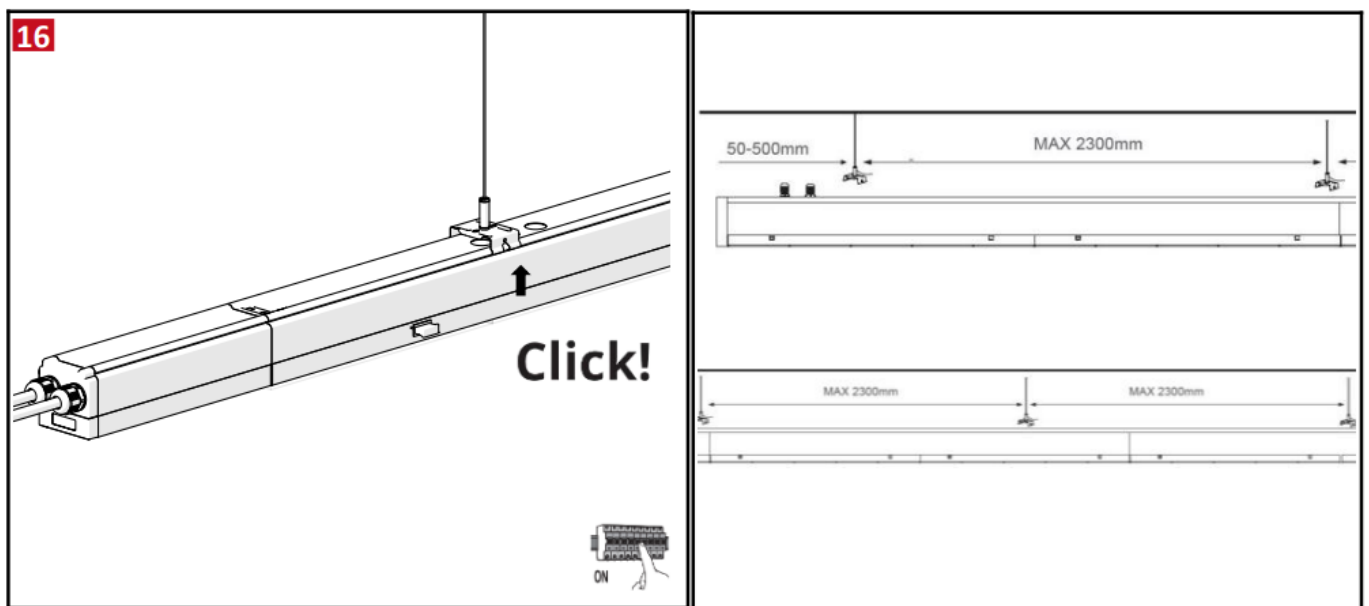
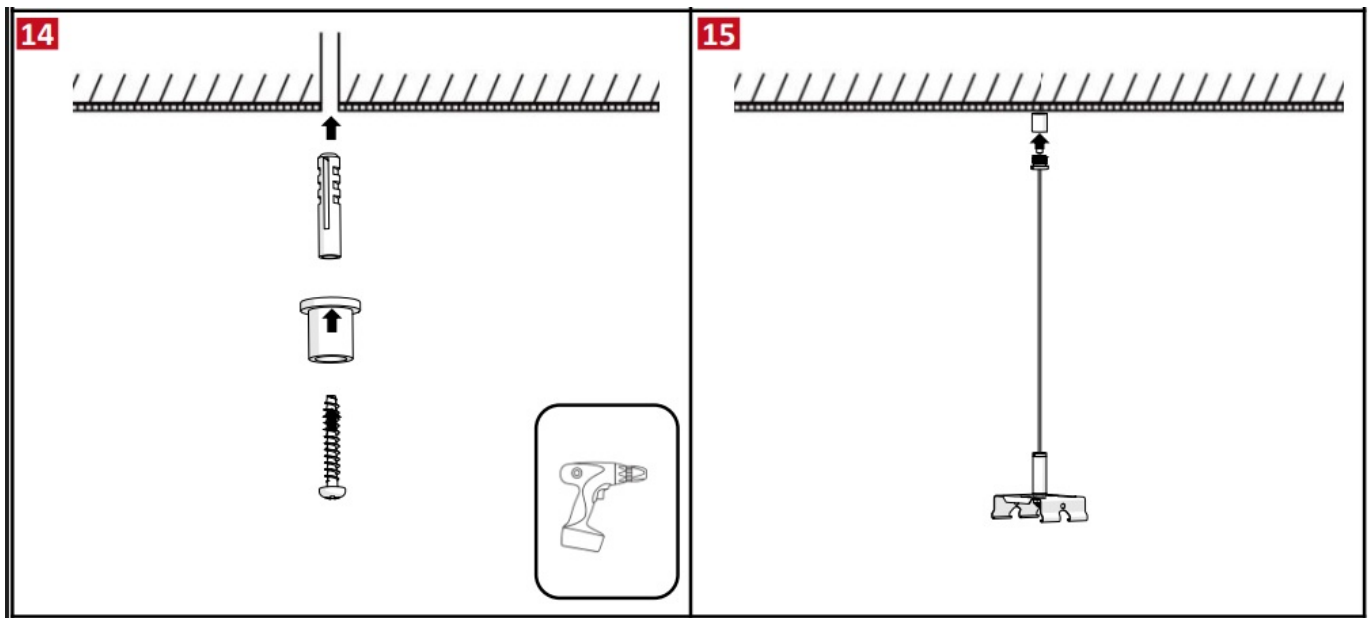
6

Philips 65W 	Pin 1	Pin 2	Wattage
	ON	ON	65W
	ON	OFF	55W
	OFF	ON	46W
	OFF	OFF	37W

Step 7

Turn on the power and test the luminaire for proper operation.





Frequently Asked Questions

- **Q: Can I install the Hyperline luminaire myself?**

A: No, the installation must be done by a professional installer following the specified standards and regulations.

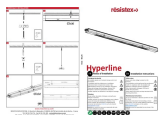
- **Q: How should I clean the fixture?**

A: Do not use chemicals or abrasives to clean the fixture. Refer to maintenance instructions for proper cleaning guidelines.

- **Q: Where can I find more information about RESISTEX luminaires?**

A: Visit www.resistex-sa.com for additional information.

Documents / Resources



[resistex Hyperline Multi 4000K \[pdf\]](#) Installation Guide V3.2 - 05.24, Hyperline Multi 4000K, Multi 4000K, 4000K

References

- [User Manual](#)

📎 4000K, Hyperline Multi 4000K, Multi 4000K, resistex, V3.2 -

📁 resistex 05.24

Leave a comment

Your email address will not be published. Required fields are marked *

Comment *

Name

Email

Website

☐ Save my name, email, and website in this browser for the next time I comment.

Post Comment

Search:

e.g. whirlpool wrf535swhz

Search

[Manuals+](#) | [Upload](#) | [Deep Search](#) | [Privacy Policy](#) | [@manuals.plus](#) | [YouTube](#)

This website is an independent publication and is neither affiliated with nor endorsed by any of the trademark owners. The "Bluetooth®" word mark and logos are registered trademarks owned by Bluetooth SIG, Inc. The "Wi-Fi®" word mark and logos are registered trademarks owned by the Wi-Fi Alliance. Any use of these marks on this website does not imply any affiliation with or endorsement.