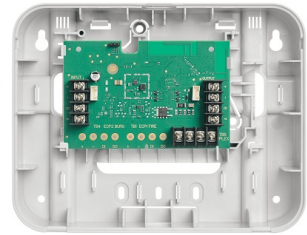


**resideo**  
**VISTAHTKVR-**  
**V-002-V0**  
**Gateway**  
**Module**



## resideo VISTAHTKVR-V-002-V0 Gateway Module User Guide

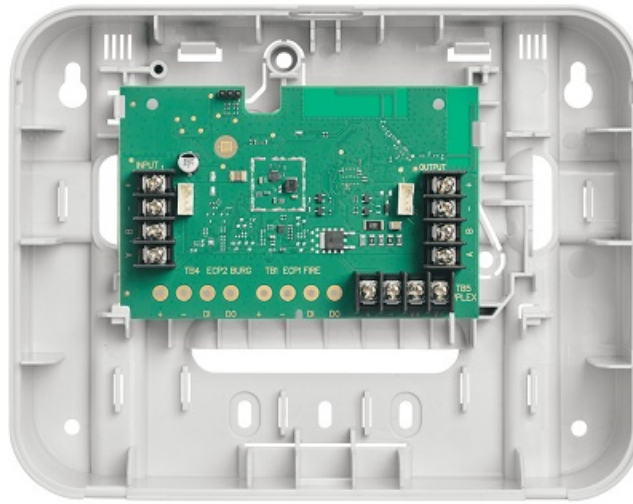
[Home](#) » [resideo](#) » resideo VISTAHTKVR-V-002-V0 Gateway Module User Guide 

### Contents

- 1 [resideo VISTAHTKVR-V-002-V0 Gateway Module](#)
- 2 [FAQs](#)
- 3 [GENERAL INFORMATION](#)
- 4 [INSTALLATION](#)
- 5 [SUMMARY OF CONNECTIONS](#)
- 6 [CONNECTIONS AND SETTINGS](#)
- 7 [LED OPERATION](#)
- 8 [SPECIFICATIONS](#)
- 9 [FCC](#)
- 10 [Documents / Resources](#)
  - 10.1 [References](#)
- 11 [Related Posts](#)

# resideo

resideo VISTAHTKVR-V-002-V0 Gateway Module



## FAQs

- **Q: How many VISTAHTKVR-V modules does the VISTA H3 Control panel support?**
  - A: The VISTA H3 Control panel supports up to 4 VISTAHTKVR-V modules, one for each partition.

## GENERAL INFORMATION

The VISTAHTKVR-V Gateway module allows compatibility for Resideo V-Plex devices to operate on compatible First Alert Pro VISTA Hybrid Control Panels. It connects to the control's iBus bus wiring terminals and is mounted remotely. The VISTA H3 Control panel support 4 VISTAHTKVR-V modules, one for each partition.

### Maximum Number of Devices

- 96 total devices supported.
- 172 number of input zones
- 52 relay modules (4101SNs)

### IMPORTANT NOTE:

PROHVPLEX module only supports serial mode! Modules that support zone assignment and serial must be set for serial mode. Refer to the module's installation instructions for more information.

### V-Plex Sensor Compatibility

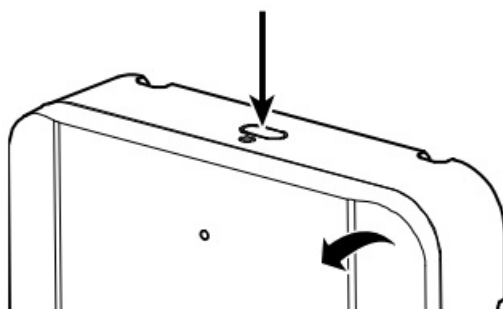
Sensor	Description	Sensor	Description
269SN	Hold up Switch	4939SN	Surface Mount Contact
4101SN	1 Zone + 1 Relay	4959SN	OHD Contact
4190SN	2-zone Expander	5193SD	Smoke Detector
4191SN	Recessed Contact	5193SDT	Smoke Detector
4193SN	1 zone Expander	DT8050A-SN	Dual Tec PIR, w/Anti-Mask
4193SNP	1 zone Expander	DT7500SN	Dual-Tec PIR
4208SN	8 Zone Expander	FG1625SN	Glass Break Detector
4208SNF	8 Zn Exp. w/Class A	IS2500SN	V-Plex/Sim Dual Tech
4208U*	8 Zone Expander	IS3050A-SN	Motion Detector
4209U*	4, 2-Wire Smoke Zn	VPLEX-VSI	V-Plex Short Isolator

## INSTALLATION

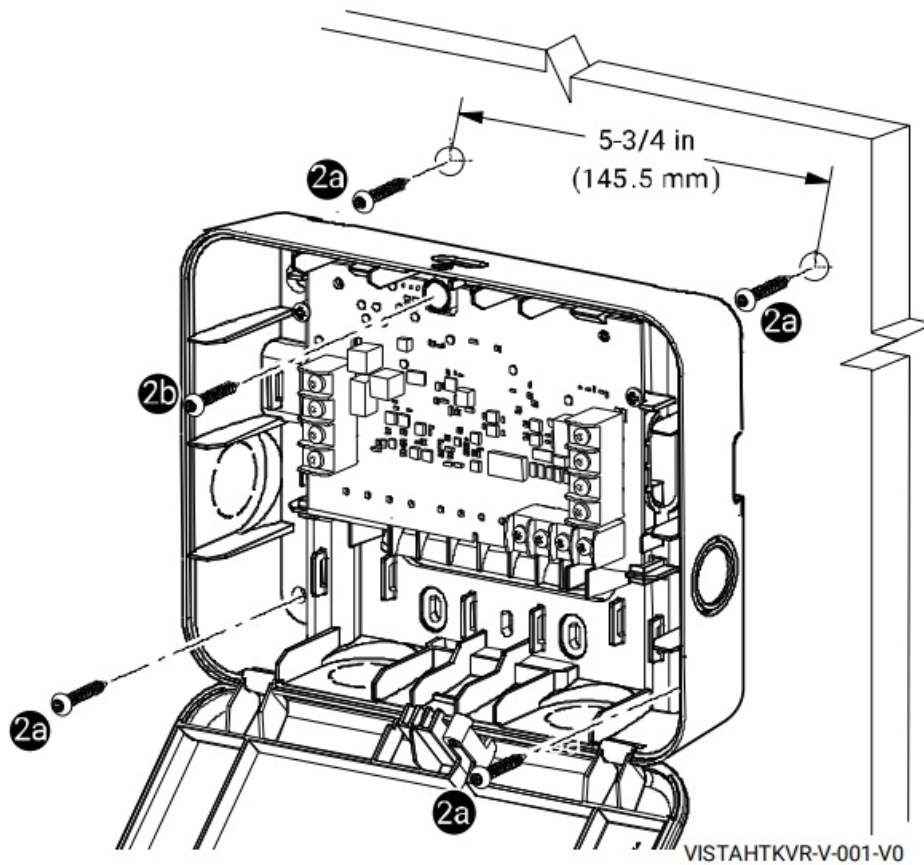
- The module has two built-in tampers (front and rear), allowing it to detect and report the removal of its cover and/or the removal from the wall to the control panel.
- Communication with the module is supervised. If the wiring is cut, a supervision or alarm signal will result, indicating that this module (and possibly other devices connected to the iBus wiring) has become inoperative.

## MOUNTING

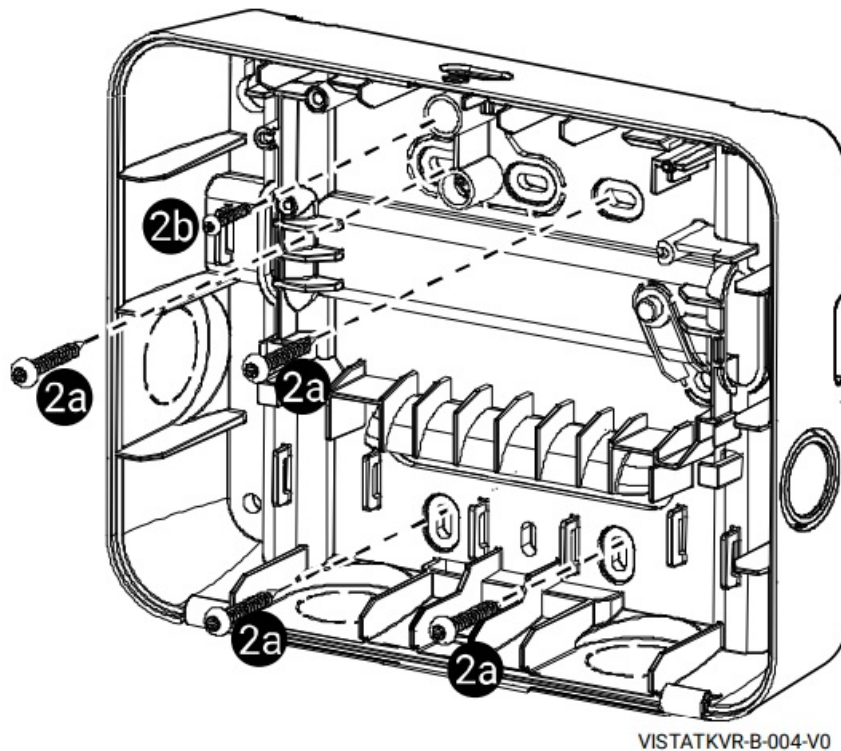
1. Push the button on top of the module to open the cover.



2. For surface installations, using the 5 provided screws [2a], mount the back case to the wall using the designated mounting holes and back case tamper [2b].



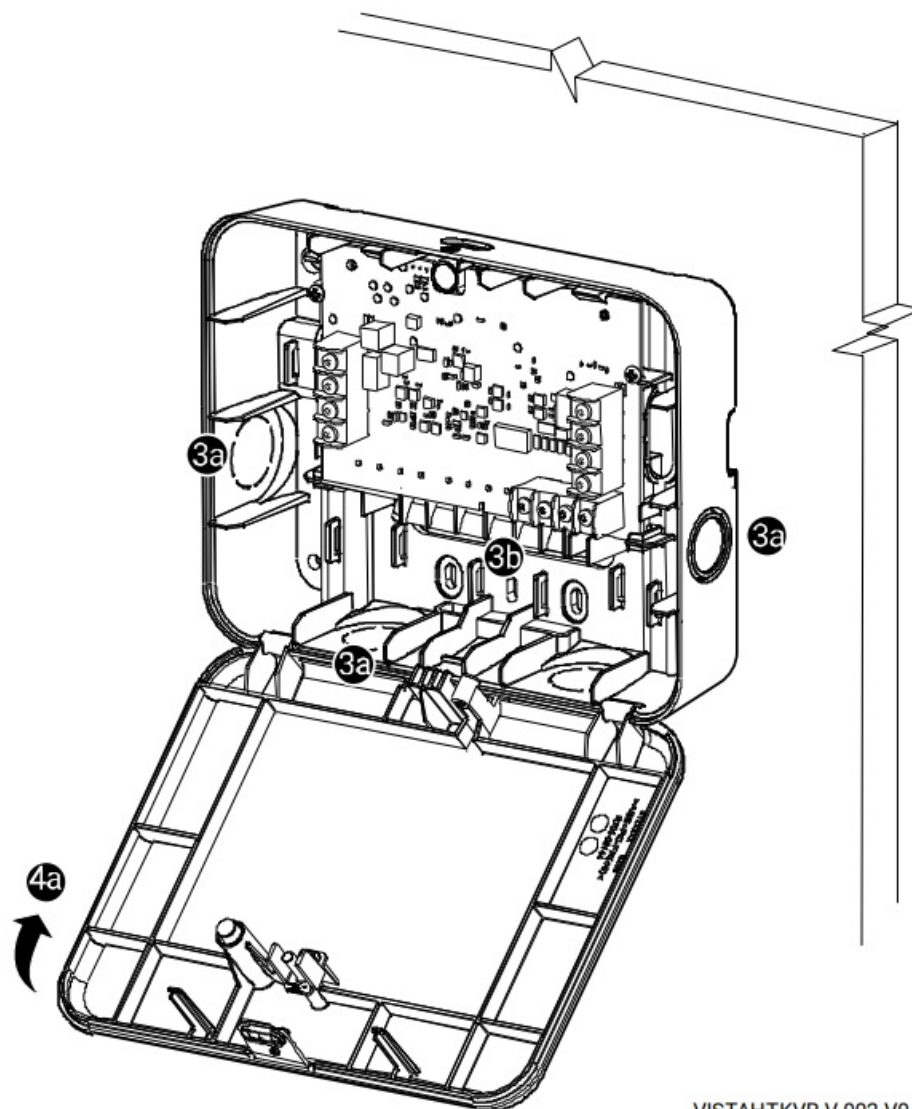
- 2b. For gang box installations, carefully remove PCB and using the 5 provided screws [2a], mount the back case to the wall using the designated mounting holes and back case tamper [2b].



3. Using best practices, choose the appropriate knockout [3a] to feed the wires through (or use the hole provided in the back of the box [3b]).

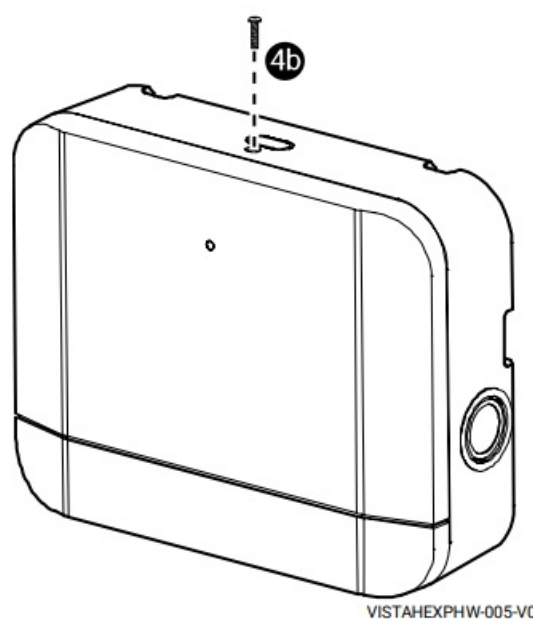
- **IMPORTANT:**

- Damage to the product can occur if incorrectly wired. See a summary of connections for proper wiring.



VISTAHTKVR-V-002-V0

4. Rotate the cover and snap it into place [4a], secure it with provided lock screw [4b].

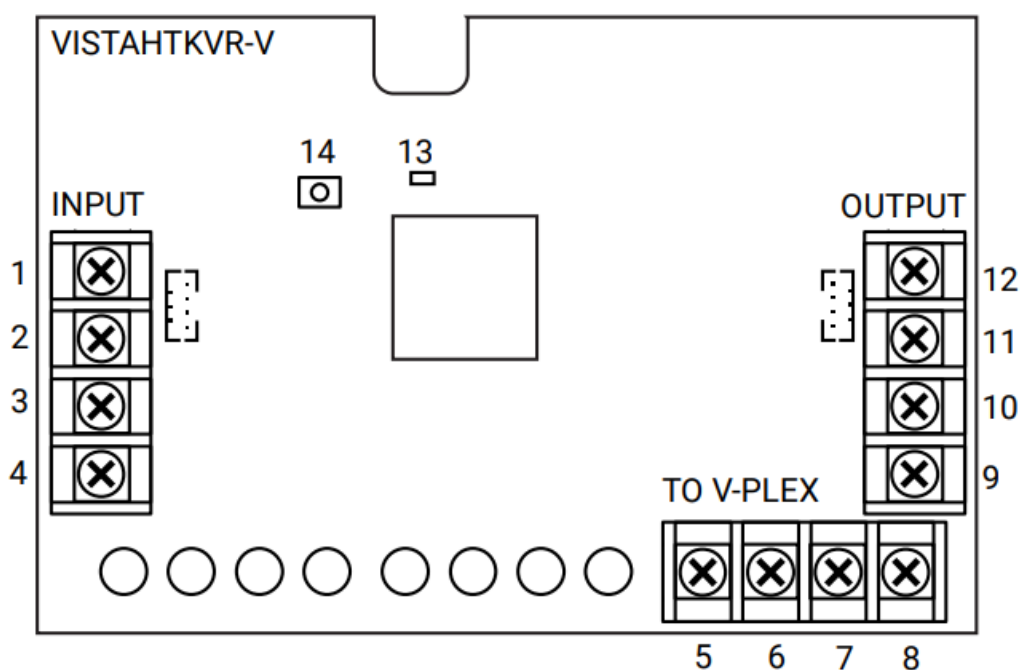


VISTAHEXPHW-005-V0

## SUMMARY OF CONNECTIONS

iBus Input		V-Plex Connections	
1	Red: Positive (+)	5	12V Positive (+)*
2	Black: Negative (-)	6	12V Negative (-)*
3	Yellow: iBus B	7	V-Plex Positive (+)
4	Green: iBus A	8	V-Plex Negative (-)
iBus Output			
9	Green: iBus A	13	LED
10	Yellow: iBus B	14	Tamper
11	Red: Positive (+)		
12	Black: Negative (-)		

\* This AUX power can be used to connect to V-Plex devices that have 4 terminals on board (Power+, Power-, Loop+, Loop-) when current drawn from V-Plex Loop exceed 128mA.



## iBUS WIRING LIMITATIONS

Wire Gauge (A WG)	Total Current of All Devices Connected to a Single Wire Run				
	50mA or less	100mA	300mA	500mA	600mA
#22	700ft (213m)	350ft (107m)	120ft (37m)	70ft (21m)	60ft (19m)
#20	1200ft (366m)	600ft (183m)	200ft (61m)	120ft (37m)	100ft (30m)
#18	1900ft (579m)	950ft (290m)	320ft (98m)	190ft (58m)	160ft (49m)
#16	3000ft (914m)	1500ft (457m)	500ft (152m)	300ft (91m)	260ft (76m)

**NOTE:** The length of all wire runs for all partitions combined must not exceed 3000 feet (914m) when unshielded quad conductor cable is used or 1500 feet (457m) if shielded cable is used.

## CONNECTIONS AND SETTINGS

1. Power should be disconnected before proceeding.
2. Be sure to mount the module before making any wire connections.

Using the summary of connections above; using best practices, connect to the control's iBus terminals via a 4-position terminal block (input). After powering up, enroll the module through the panel's iBus programming. Refer to the module's installation instructions for specific information on enabling and configuring each V-Plex device. After enrollment, the module is configurable via the control panel programming or the app.

## ENROLLMENT

1. The unique identifier defined on the attached label is required.
2. The control panel automatically assigns each V-Plex device to the next available zone or relay.
3. Confirm and document each device and its assignments for multimodule installations to prevent confusion.

## LED OPERATION

Color	Indication	Function
Green	Slow Blink	Module Firmware Updating
	Solid	Normal Operation, iBus Online
Amber	Fast Blink	iBus Offline
	Solid	System Trouble" 1. Tamper Fault 2. Power Overload 3. Relay Output Supervision Trouble 4. Device Supervision Trouble
N/A	Off	1. No power or communication 2. Panel is in AC Loss mode

## SPECIFICATIONS

### • Physical

- Dimensions 6.93" W x 5.43" H x 1.99 D
- (176mm x 138mm x 50.5mm)

### • Electrical

- Input Voltage 12VDC nominal (10-14VDC)
- Input Current 56mA

- **NOTE:** This does not include powered devices using the AUX terminals or current of the V-Plex devices.

- **Environmental**

- Operating Temperature 32° – 122°F (0° – 50°C)
- Operating Humidity 0 – 95% Relative Humidity

## **FCC**

### **FEDERAL COMMUNICATIONS COMMISSION (FCC) & INDUSTRY CANADA (IC) STATEMENTS**

The user shall not make any changes or modifications to the equipment unless authorized by the Installation Instructions or User's Manual. Unauthorized changes or modifications could void the user's authority to operate the equipment.

### **CLASS B DIGITAL DEVICE STATEMENT**

This equipment has been tested and found to comply with the limits for a Class B digital device, as defined by FCC Rules Part 15.105. The Class B Digital Device statement can be viewed at: <https://customer.resideo.com/en-US/support/residential/codes-andstandards/FCC15105/Pages/default.aspx>

### **FCC / IC STATEMENT**

This device complies with Part 15 of the FCC Rules, and Industry Canada's license-exempt RSSs. Operation is subject to the following two conditions: (1) This device may not cause harmful interference, and (2) This device must accept any interference received, including interference that may cause undesired operation. Responsible Party / Issuer of Supplier's Declaration of Conformity: Ademco Inc., a subsidiary of Resideo Technologies, Inc., 2 Corporate Center Drive., Melville, NY 11747, Ph: [516-577-2000](tel:516-577-2000)

- REFER TO THE INSTALLATION INSTRUCTIONS FOR THE CONTROL PANEL WITH WHICH THIS DEVICE IS USED, FOR DETAILS ON THE LIMITATIONS OF THE ENTIRE ALARM SYSTEM.
- For the latest warranty information, please go to: [www.resideo.com](http://www.resideo.com)
- For technical support, call 1-[800-645-7492](tel:800-645-7492), M-F 8:30 am to 5 pm EST.
- For documentation, go to: [www.resideo.com](http://www.resideo.com)

This equipment should be installed in accordance with National Electrical Code, NFPA 70, Standard for the Installation of Residential Fire Warning Systems, CAN/ULC-S540 and Chapter 2 of the National Fire Alarm Code, ANSI/NFPA 72 (National Fire Protection Association, Batterymarch Park, Quincy, MA 02269). Printed information describing proper installation, operation, testing, maintenance, evacuation planning, and repair service is to be provided with this equipment

### **Canadian Installations**

For Installation in Canada, wiring shall be in accordance with CSA C22.1, Canadian Electrical Code, Part I, Safety Standard for Electrical Installations; CAN/ULC S302, Standard for the Installation, Inspection and Testing of Intrusion Alarm Systems; and CAN/ULC S301, Standard for Signal Receiving Centre Intrusion Alarm Systems and Operations.

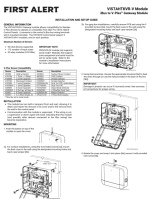
**Warning:** Owner's instruction notice: 'Not to be removed by anyone except occupant' This system must be checked by a qualified technician at least once every three (3) years.



**Note:** The product should not be disposed of with other household waste. Check for the nearest authorized collection centers or authorized recyclers. The correct disposal of end-of-life equipment will help prevent potential negative consequences for the environment and human health. Any attempt to reverse-engineer this device by decoding proprietary protocols, de-compiling firmware, or any similar actions is strictly prohibited.

- [www.resideo.com](http://www.resideo.com)

## Documents / Resources

	<a href="#">resideo VISTAHTKVR-V-002-V0 Gateway Module</a> [pdf] User Guide VISTAHTKVR-V-002-V0, VISTAHTKVR-V-001-V0, VISTAHEXPHW-005-V0, VISTAHTKVR-V-002-V0 Gateway Module, VISTAHTKVR-V-002-V0, Gateway Module, Module
---	--

## References

- [Smart Home Solutions in the United Kingdom | Resideo UK](#)
- [User Manual](#)

[Manuals+](#), [Privacy Policy](#)

This website is an independent publication and is neither affiliated with nor endorsed by any of the trademark owners. The "Bluetooth®" word mark and logos are registered trademarks owned by Bluetooth SIG, Inc. The "Wi-Fi®" word mark and logos are registered trademarks owned by the Wi-Fi Alliance. Any use of these marks on this website does not imply any affiliation with or endorsement.