



# resideo PROWIFI-EU Wireless Communication Module Installation Guide

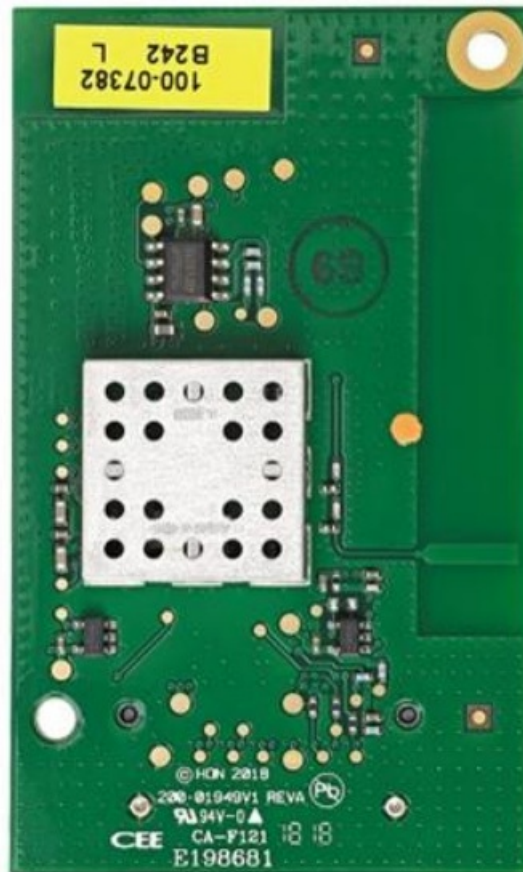
[Home](#) » [resideo](#) » **resideo PROWIFI-EU Wireless Communication Module Installation Guide** 

## Contents

- [1 resideo PROWIFI-EU Wireless Communication Module](#)
- [2 GENERAL INFORMATION](#)
- [3 INSTALLING](#)
- [4 PROGRAMMING](#)
- [5 SPECIFICATIONS](#)
- [6 SUPPORT & WARRANTY INFORMATION](#)
- [7 Documents / Resources](#)
  - [7.1 References](#)
- [8 Related Posts](#)

# resideo

**resideo PROWIFI-EU Wireless Communication Module**



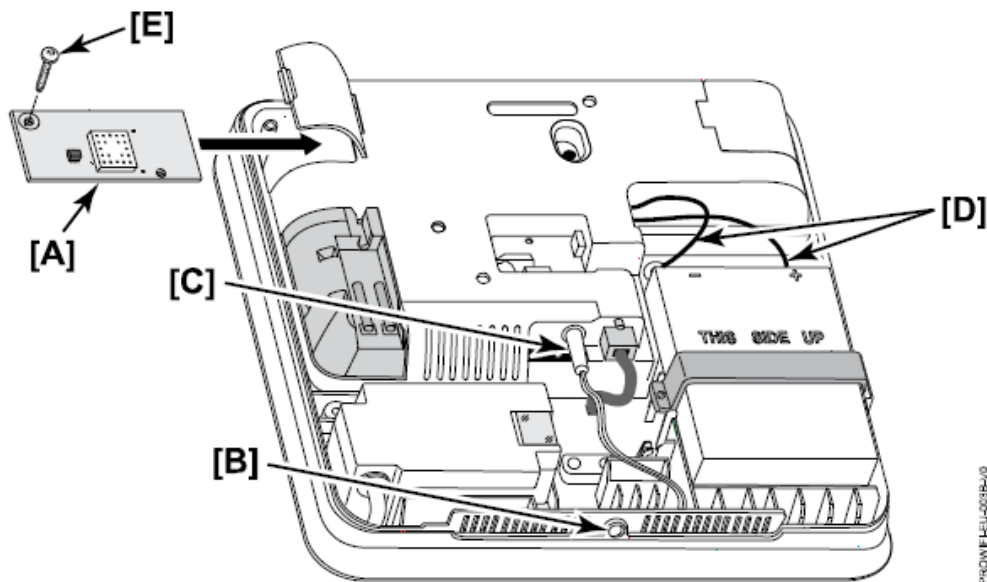
## GENERAL INFORMATION

The PROWIFI-EU and PROWIFIZW-EU Communication Modules allow PRO Series Control Panels to communicate with the Central Station, PRO Series Wireless Touchscreens, and Amazon Alexa via Wi-Fi. These communication modules are intended to provide compatible Control Panels with a Wi-Fi connection as well as connection with and the ability to control Z-Wave™ devices. The module connects directly to the Control Panel and is powered via the Control Panel's connection. Refer to the applicable Control Panel's Installation and Setup Guide for additional information.

**Note:** Installation shall be done in accordance with local regulations.

## INSTALLING

Install the module [A] as follows (figure 1)



**Figure 1. Installing the Module**

**Note:** Ensure that all electrical power is removed from the control before installing the module.

1. If the Control Panel is not powered up, proceed to step 3.
2. If the Control Panel is powered up:
  - Disarm the system and wait 30-60 seconds.
  - Remove screw [B] that secures the panel front cover and remove cover.
  - Unplug the Power Supply DC connector [C].
  - Unplug the red and black battery cables [D] to disconnect the battery.
3. Insert the module into the slot on the left side of the control as shown in Figure 1 and ensure the receptacle is securely seated on the edge connector.
4. Secure the module to the control with screw [E].
5. If no other modules need to be installed:
  - Connect the Power Supply DC connector [C].
  - Connect the red and black battery cables [D] to the control panel + and – contacts.
6. Install control panel front cover and secure with screw [B].

## PROGRAMMING

The module requires a router and internet service for Wi-Fi connection.

**Note:** For detailed programming instructions refer to the Installation Instructions for the Control Panel with which this device is used.

1. Programming associated with the module, as well as the inclusion/exclusion of Z-Wave devices, is conducted through the AlarmNet 360™ cloud-based management platform. The keypad must be enrolled in the Control Panel before it can be used.
2. When programming is complete, perform a Communications Test.

## SPECIFICATIONS

- **Dimensions (mm) / Weight:** 40 (W) x 67 (L) x 10 (H) / 20 g
- **Operating temperature:** -10°C ~ +55°C
- **Input voltage range:** 3.3 – 14 V, max 17 V
- **Input voltage:** 3.5 V
- **Current drain:** 250 mA

The product should not be disposed of with other household waste. Check for the nearest authorized collection centers or authorized recyclers. The correct disposal of end-of-life equipment will help prevent potential negative consequences for the environment and human health.

### **The product must be tested at least once each year**

Any attempt to reverse-engineer this device by decoding proprietary protocols, de-compiling firmware, or any similar actions is strictly prohibited.

### **IMPORTANT SECURITY NOTICE**

Please inform the User about the security importance of their wireless key (key fob), and what to do if it is lost. Explain that the key fob is similar to their keys or access card. If lost or stolen, their security system could be compromised. They should immediately notify the Dealer/Installer of a lost or stolen key fob. The Dealer/Installer will then remove the key fob programming from the security system.

REFER TO THE INSTALLATION INSTRUCTIONS FOR THE CONTROL PANEL WITH WHICH THIS DEVICE IS USED, FOR DETAILS REGARDING THE LIMITATIONS OF THE ENTIRE ALARM SYSTEM.

### **SUPPORT & WARRANTY INFORMATION**



- For the latest documentation, warranty, and support, please go to: [www.resideo.com](http://www.resideo.com)

#### **Securite Communications SAS (SECOM)**

- 1198, Avenue du Docteur Maurice Donat
- 06250 Mougins – FRANCE

#### **Ademco 1 Ltd., 200 Berkshire Place**

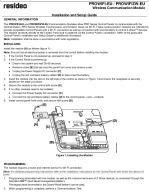
- Winnersh Triangle, Berkshire,
- RG41 5RD – UNITED KINGDOM

PROWIFIZW-EU



R800-26502B 03/22 Rev B

Documents / Resources

	<p><a href="#">resideo PROWIFI-EU Wireless Communication Module</a> [pdf] Installation Guide PROWIFI-EU Wireless Communication Module, PROWIFI-EU, Wireless Communication Modul e, Communication Module</p>
-----------------------------------------------------------------------------------	---------------------------------------------------------------------------------------------------------------------------------------------------------------------------------------------------------------------

References

-  [Smart Home Products and Systems | Resideo](#)
-  [PROWIFIZW-EU ProSeries Combination WiFi Communication and Z-Wave Module | Resideo](#)