

[Home](#) » [resideo](#) » **resideo MSLF-B030-151 Electrically Operated Linear Actuators Installation Guide** 

Contents [[hide](#)]

[1 resideo MSLF-B030-151 Electrically Operated Linear Actuators](#)

[2 Product Specifications](#)

[3 Installation](#)

[4 Operation](#)

[5 Maintenance](#)

[6 Frequently Asked Questions](#)

[7 Documents / Resources](#)

[7.1 References](#)



resideo MSLF-B030-151 Electrically Operated Linear Actuators



Product Specifications

- Model Number: V5007
- Actuator Type: Central Linear Actuator
- Power Supply:
 - MSLF: 24 V~ 50 HZ
 - MSHF: 230 V~ 50 HZ
- IP Rating: IP54
- Operating Temperature: Min 10.4mm, Max 18.4mm
- Compliance: EN 60730

Installation

1. Identify the correct power supply for your model (MSLF or MSHF).
2. Ensure the actuator is securely mounted in the desired location.
3. Connect the power supply according to the wiring diagram provided.

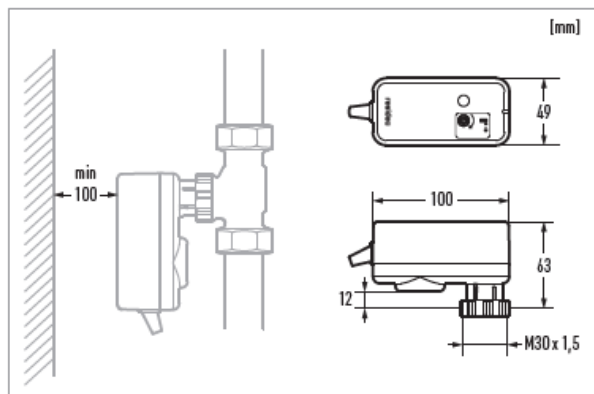
Operation

1. To open the actuator, switch to the “OPEN” position for the desired duration.
2. To close the actuator, switch to the “CLOSE” position for the desired duration.
3. Refer to the user manual for specific instructions on timing and positioning.

Maintenance

- Regularly check for any signs of wear and tear. Lubricate moving parts if necessary.





i

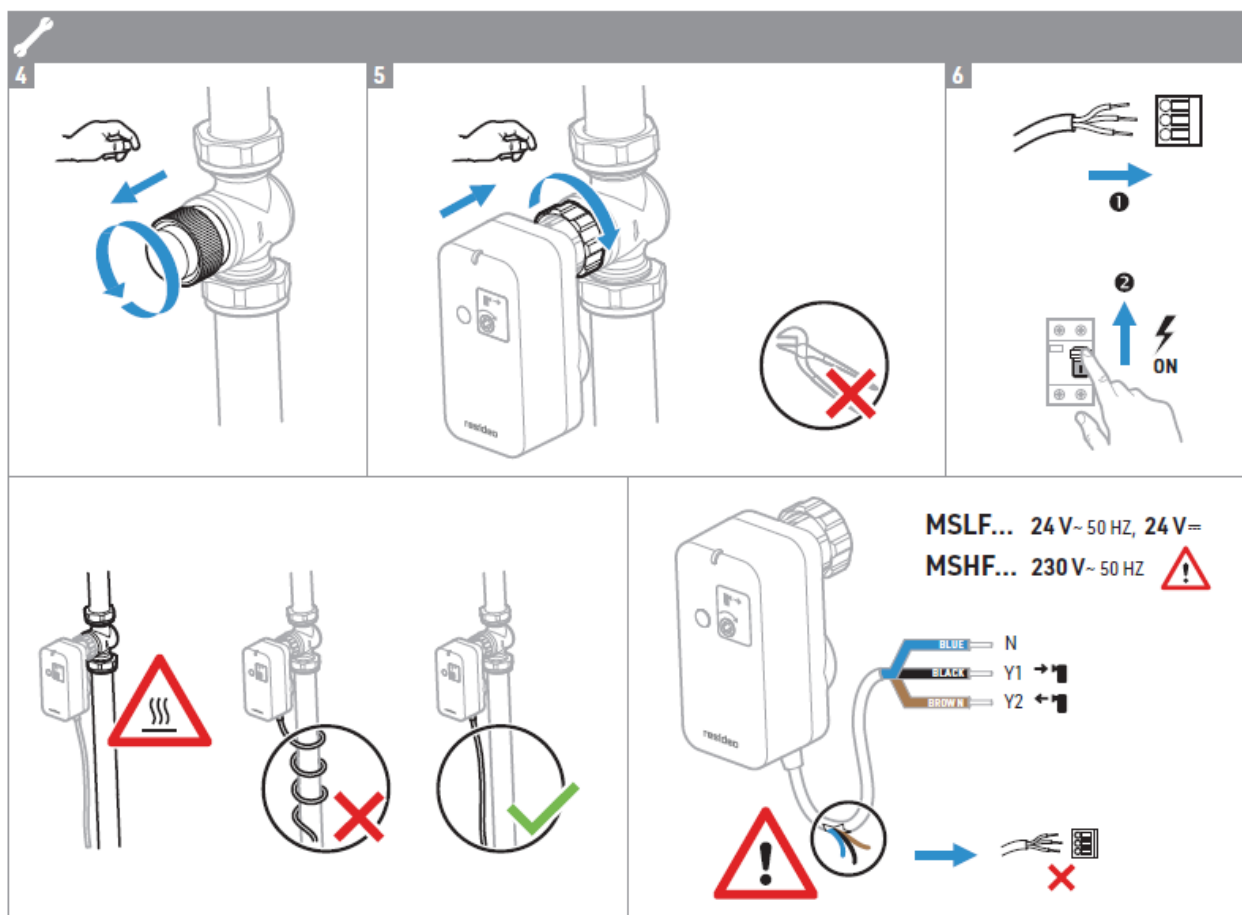
					Type 1 EN 60730
-5 to 60 °C	Min -10°C Max 120°C	Min -20°C Max 70°C	5% to 95% R.H. non-condensing	Pollution degree 2	

IP 54

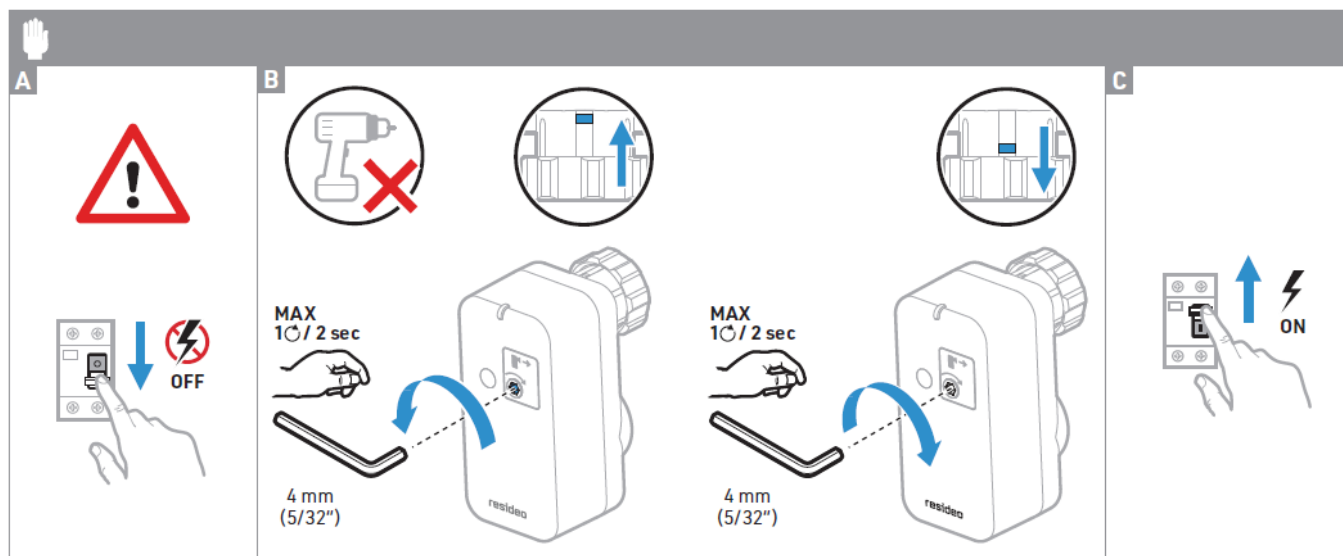
1

2

3



	3-pt	2-pt	V5007	VDE	VXE	VYE
↑						
↓						



WEEE Directive 2012/19/EU

The product (and contained batteries) should not be disposed of with other household

waste. Check for the nearest authorized collection centers or authorized recyclers. The correct disposal of end-of-life equipment will help prevent potential negative consequences for the environment and human health.

- Manufactured for and on behalf of Pittway Sàrl, Z.A., La Pièce 6, 1180 Rolle, Switzerland
- For more information www.resideo.com
- R32352056-001 A
- UK authorized representative: Resideo Technologies, Newhouse Industrial Estate, Motherwell, ML1 5SB, UK by its affiliate Ademco CZ, s.r.o Tuřanka 1236/96 627 00 Brno-Slatina Czech Republic
- Subject to change without notice. MU1H1789GE23 R0125 © 2025 Resideo Technologies, Inc. All rights reserved.

Frequently Asked Questions

Q: How do I determine the correct power supply for my Centra Linear Actuator?

A: Refer to the model specifications. MSLF requires a 24V power supply, while MSHF requires a 230V power supply.

Q: What should I do if the actuator does not respond to commands?

A: Check the wiring connections and power supply. Ensure that the actuator is securely mounted and free from obstructions.

Q: Can I dispose of the product with household waste?

A: No, please follow the WEEE Directive 2012/19/EU guidelines for proper disposal to protect the environment and human health.

Documents / Resources



[resideo MSLF-B030-151 Electrically Operated Linear Actuators \[pdf\]](#) Installation Guide

MSLF-B030-151, V5007, MSLF-B030-151 Electrically Operated Linear Actuators, MSLF-B030-151, Electrically Operated Linear Actuators, Operated Linear Actuators, Linear Actuators

References

- [User Manual](#)

resideo

Electrically Operated Linear Actuators, Linear Actuators, MSLF-B030-151, MSLF-B030-151 Electrically Operated Linear Actuators, Operated Linear Actuators, resideo, V5007

Leave a comment

Your email address will not be published. Required fields are marked *

Comment *

Name

Email

Website

☐ Save my name, email, and website in this browser for the next time I comment.

Post Comment

Search:

e.g. whirlpool wrf535swhz

Search

[Manuals+](#) | [Upload](#) | [Deep Search](#) | [Privacy Policy](#) | [@manuals.plus](#) | [YouTube](#)

This website is an independent publication and is neither affiliated with nor endorsed by any of the trademark owners. The "Bluetooth®" word mark and logos are registered trademarks owned by Bluetooth SIG, Inc. The "Wi-Fi®" word mark and logos are registered trademarks owned by the Wi-Fi Alliance. Any use of these marks on this website does not imply any affiliation with or endorsement.