



reolink WiFi IP Camera User Guide

[Home](#) » [reolink](#) » reolink WiFi IP Camera User Guide 

Contents

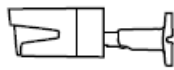
- [1 reolink WiFi IP Camera](#)
- [2 What's in the Box](#)
- [3 Camera Introduction](#)
- [4 Connection Diagram](#)
- [5 Set up the Camera](#)
- [6 Install the Camera](#)
- [7 Mount the Camera](#)
- [8 Troubleshooting](#)
- [9 Specifications](#)
- [10 Notification of Compliance](#)
- [11 Limited Warranty](#)
- [12 FCC Statement](#)
- [13 Documents / Resources](#)
 - [13.1 References](#)
- [14 Related Posts](#)



reolink WiFi IP Camera



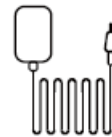
What's in the Box



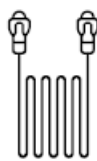
Camera



Antenna



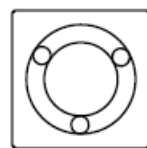
Power Adapter



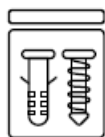
1m
Network Cable



4.5m Power
Extension Cable



Mounting
Template



Pack
of Screws



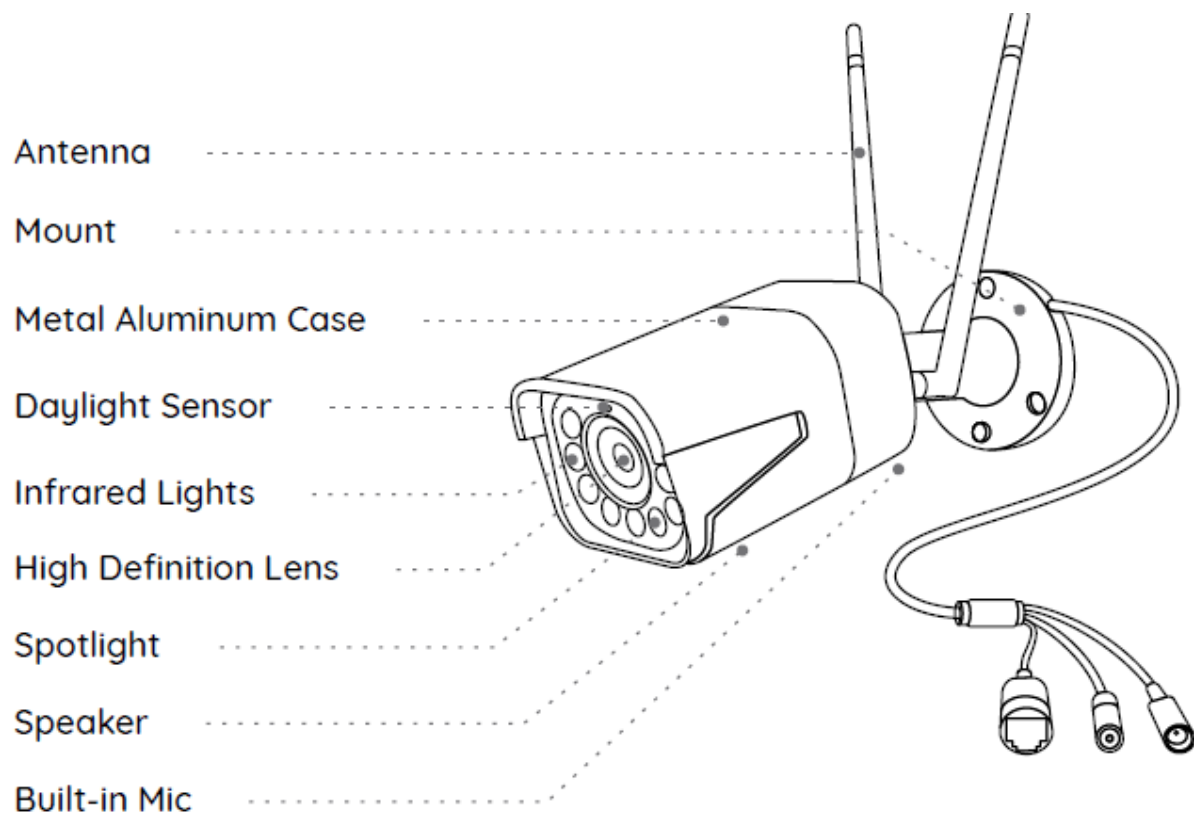
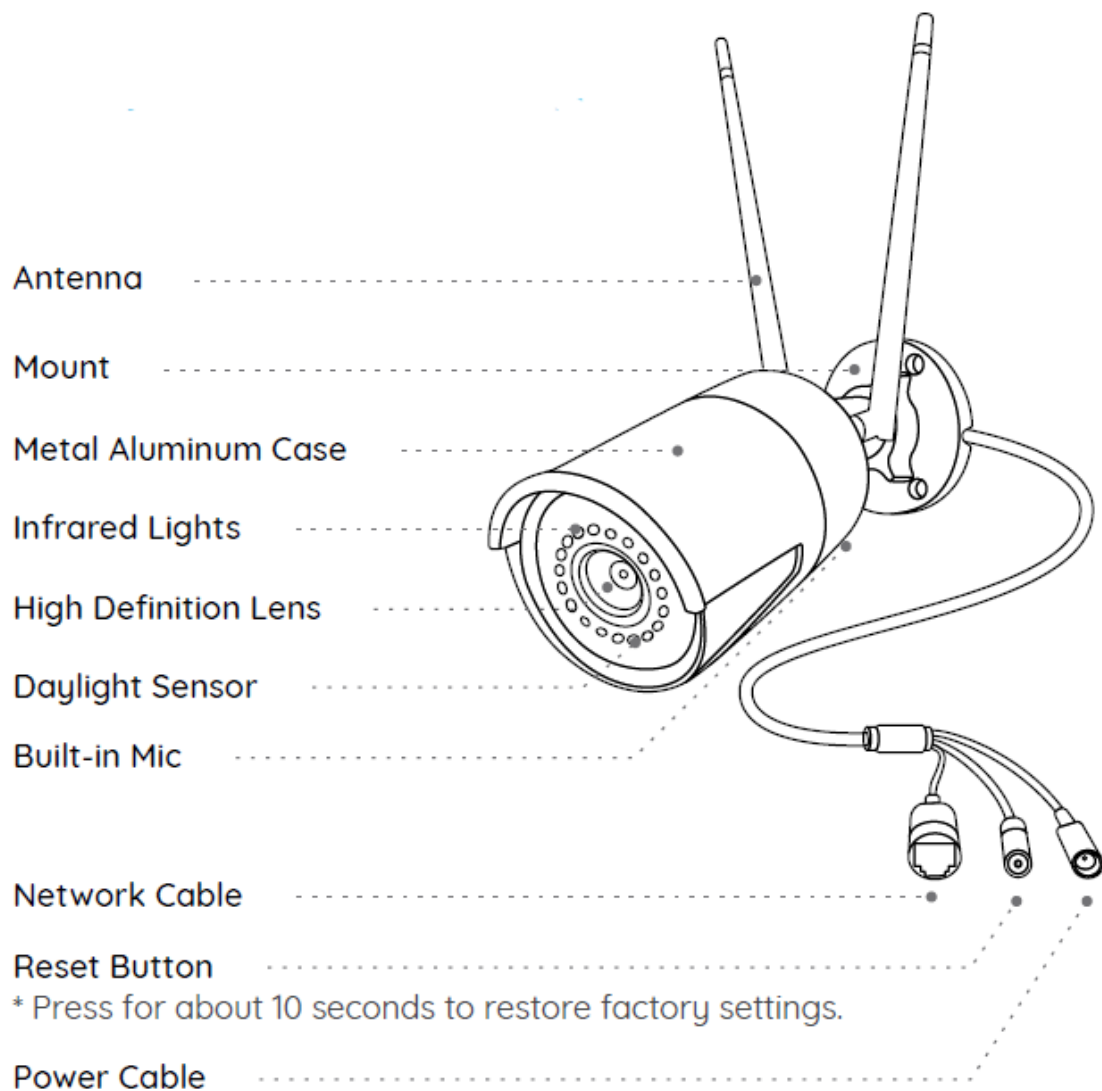
Surveillance Sign



Quick Start Guide

NOTE: Camera and accessories vary with different camera models that you purchase

Camera Introduction



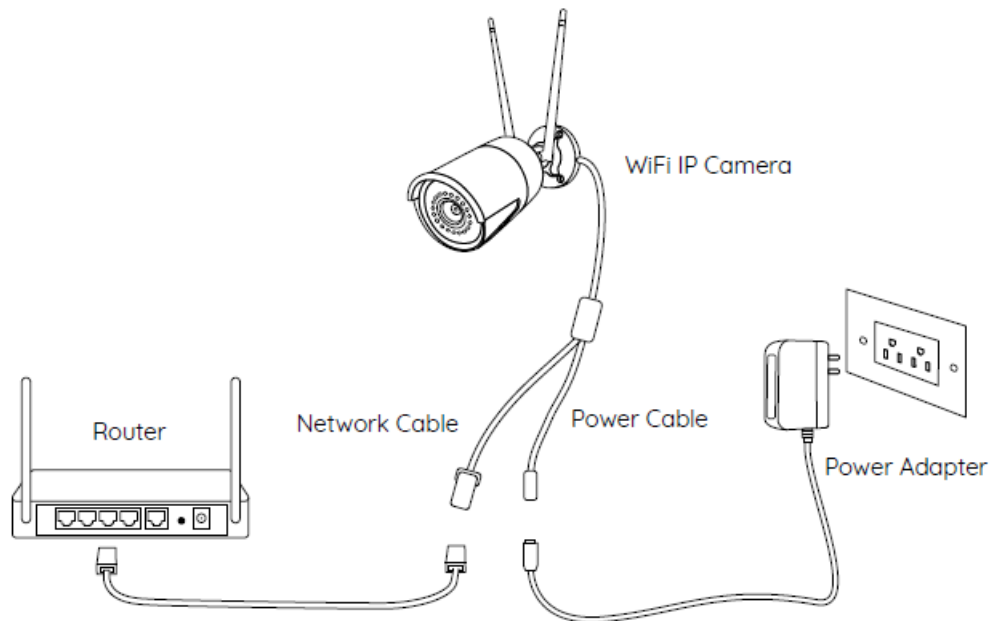
NOTE:

- Different types of cameras are introduced in this section. Please check out the camera included in the package and check out the details from the corresponding introduction above.
- The actual appearance and components may vary with different model of product.

Connection Diagram

Before initial setup, follow the steps below to connect your camera.

1. Connect the camera to a LAN port on your router with an Ethernet cable.
2. Power on the camera with a power adapter



Set up the Camera

Download and Launch the Reolink App or Client software, and follow the onscreen instructions to finish initial setup

On Smartphone

Scan to download the Reolink App



On PC

Download path of the Reolink Client: Go to <https://reolink.com> >Support >App & Client

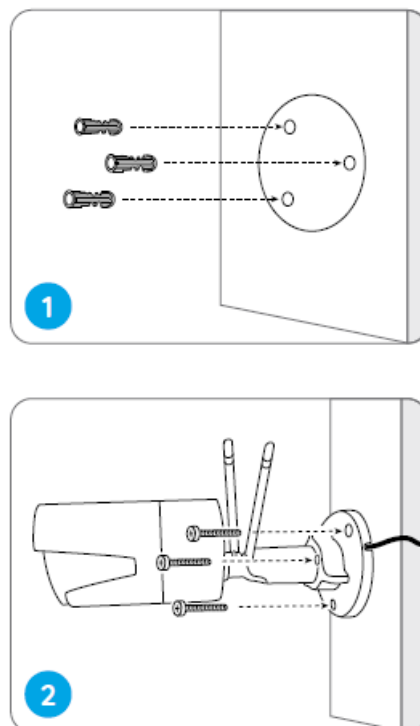
Install the Camera

Installation Tips

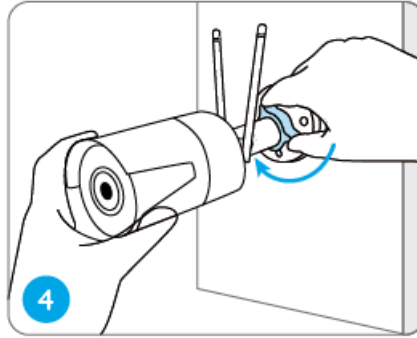
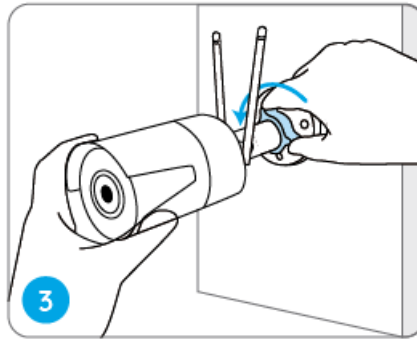
- Do not face the camera towards any light sources.
- Do not point the camera towards a glass window. Or, it may result in poor image performance because of the window glare by infrared LEDs, ambient lights or status lights.
- Do not place the camera in a shaded area and point it towards a well-lit area. Or, it may result in poor image performance. For better image quality, please make sure that the lighting condition for both the camera and the capture object is the same.
- For better image quality, it's recommended to clean the lens with a soft cloth from time to time.
- Make sure the power ports are not exposed to water or moisture or blocked by dirt or other elements.
- Do not install the camera at places where rain and snow may hit the lens directly.
- The camera may work in extreme cold conditions as low as -25°C. Because when it is powered on, the camera will produce heat. You may power on the camera indoors for a few minutes before installing it outdoors.

NOTE: There are two different types of mounts for bullet cameras. Please check out the mount included in the package and follow the corresponding instruction to install the camera properly

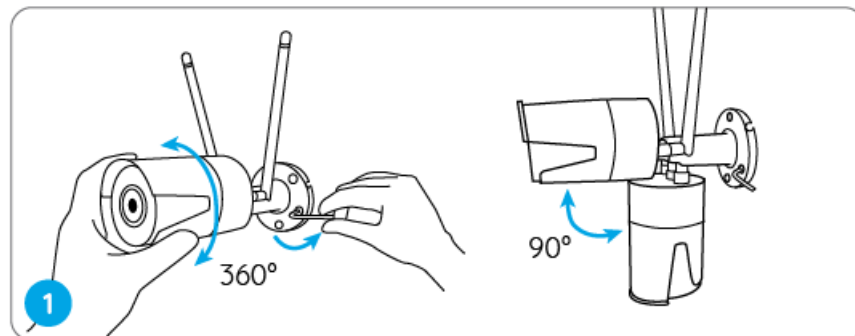
Mount the Camera



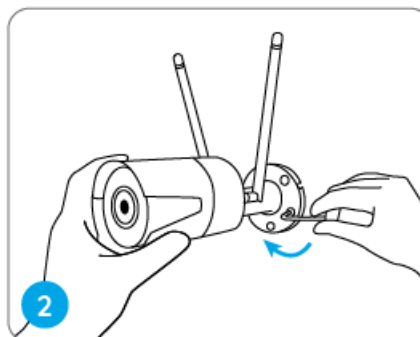
- Drill holes in accordance with the mounting hole template.
NOTE: Use the drywall anchors included in the package if needed.
NOTE: Run the cable through the cable notch on the mount base.
- Install the mount base with the mounting screws included in the package.
- To get the best field of view, loosen the adjustment knob on security mount and turn the camera
- Stiffen the adjustment knob to lock the camera



NOTE: If your camera has another mount without the adjusting knob, please loosen the adjusting screw with the provided hex key and turn the camera as shown below to adjust the angle



- Twist the screws with the wrench to unlock the camera and adjust its direction.
- After adjustment, twist the screws back to lock the camera.



Troubleshooting

IP Camera Is Not Powering on

If you find your camera is not powering on, try the following solutions:

- Please check whether the outlet is working properly or not. Try to plug the camera into a different outlet and see if it works.
- Please check whether the DC adapter is working or not. If you have another 12V DC power adapter which is working, please use another power adapter and see if it works.

If these won't work, please contact Reolink Support <https://support.reolink.com>

IR LEDs Stop Working

If you find the IR LEDs of your camera stop working, try the following solutions:

- Go to Device Settings and check whether you have enabled Infrared LEDs. If the LEDs are disabled, please enable them.
- Please go to Live View and check the Day/Night mode. Set the mode to Auto to activate the IR lights.
- Upgrade your camera's firmware to the latest version.
- Restore the camera to the factory settings and check the IR light settings again.

If these won't work, please contact Reolink Support
<https://support.reolink.com>

Specifications

Hardware Features

- **IR Distance:** 30 meters (100ft)
- **Day/Night Mode:** Auto switchover

General

- **Operating Temperature:** -10°C to 55°C (14°F to 131°F)
- **Operating Humidity:** 10%-90%
- **Weather Resistance:** IP66 certified weatherproof

Notification of Compliance

FCC Compliance Statement

This device complies with Part 15 of the FCC Rules. Operation is subject to the following two conditions: (1) this device may not cause harmful interference, and (2) this device must accept any interference received, including interference that may cause undesired operation. Changes or modifications not expressly approved by the party responsible for compliance could void the user's authority to operate the equipment.

Simplified EU Declaration of Conformity

Reolink declares that this device is in compliance with the essential requirements and other relevant provisions of Directive 2014/53/EU.

Correct Disposal of This Product

This marking indicates that this product should not be disposed with other household wastes throughout the EU. To prevent possible harm to the environment or human health from uncontrolled waste disposal, recycle it responsibly to promote the sustainable reuse of material resources. To return your used device, please use the return and collection systems or contact the retailer where the product was purchased. They can take this product for environmentally safe recycling.

Limited Warranty

This product comes with a 2-year limited warranty that is valid only if purchased from Reolink official stores or Reolink authorized resellers. Learn more: <https://reolink.com/warranty-and-return/>.

NOTE: We hope that you enjoy the new purchase. But if you are not satisfied with the product and plan to return, we strongly suggest that you reset the camera to factory default settings and take out the inserted SD card before returning.

Terms and Privacy

Use of the product is subject to your agreement to the Terms of Service and Privacy Policy at reolink.com. Keep out of the reach of children.

End User License Agreement

By using the Product Software that is embedded on the Reolink product, you agree to the terms of this End User License Agreement ("EULA") between you and Reolink. Learn more: <https://reolink.com/eula/>.

ISED Radiation Exposure Statement

This equipment complies with RSS-102 radiation exposure limits set forth for an uncontrolled environment. This equipment should be installed and operated with minimum distance 20cm between the radiator & your body.

Technical Support

If you need any technical help, please visit our official support site and contact our support team before returning the products, <https://support.reolink.com>

FCC Statement

Changes or modifications not expressly approved by the party responsible for compliance could void the user's authority to operate the equipment.

This equipment has been tested and found to comply with the limits for a Class B digital device, pursuant to Part 15 of the FCC Rules. These limits are designed to provide reasonable protection against harmful interference in a residential installation. This equipment generates uses and can radiate radio frequency energy and, if not installed and used in accordance with the instructions, may cause harmful interference to radio communications. However, there is no guarantee that interference will not occur in a particular installation. If this equipment does cause harmful interference to radio or television reception, which can be determined by turning the equipment off and on, the user is encouraged to try to correct the interference by one or more of the following measures:

- Reorient or relocate the receiving antenna.
- Increase the separation between the equipment and receiver.
- Connect the equipment into an outlet on a circuit different from that to which the receiver is connected.

- Consult the dealer or an experienced radio/TV technician for help

This device complies with part 15 of the FCC rules. Operation is subject to the following two conditions (1) this device may not cause harmful interference, and (2) this device must accept any interference received, including interference that may cause undesired operation.

This equipment complies with FCC radiation exposure limits set forth for an uncontrolled environment. This equipment should be installed and operated with minimum distance 20cm between the radiator & your body.

IC statement

This device contains licence-exempt transmitter(s)/receiver(s) that comply with Innovation, Science and Economic Development Canada's licence-exempt RSS(s). Operation is subject to the following two conditions:

1. This device may not cause interference.
2. This device must accept any interference, including interference that may cause undesired operation of the device.

The term IC: before the certification/registration number only signifies that the Industry Canada technical specifications were met.


This product meets the applicable Industry Canada technical specifications.

This transmitter must not be co-located or operating in conjunction with any other antenna or transmitter. This equipment should be installed and operated with a minimum distance of 20centimeters between the radiator and your body.

Operation of this device is restricted to indoor use only. (5180-5240MHz)

Type of antenna	External antenna
Antenna Gain	2400-2500(2.89dBi)
	5150-5850(2.89dBi)
Impedance	50Ohm
Manufacture	Shenzhen Yingjiachang Electronics Co., LTD

Documents / Resources

	reolink WiFi IP Camera [pdf] User Guide 2204E, 2AYHE-2204E, 2AYHE2204E, WiFi IP Camera, WiFi Camera, IP Camera, Camera
---	---

References

- [Reolink: Global Innovator in Smart Home Security and Camera Solutions](#)
- [Reolink: Global Innovator in Smart Home Security and Camera Solutions](#)
- [Warranty & Return – Reolink](#)
- [Reolink Support - Official Reolink Help Center](#)