



reolink TrackMix WiFi Smart 8MP Security Camera User Manual

[Home](#) » [reolink](#) » reolink TrackMix WiFi Smart 8MP Security Camera User Manual 



TrackMix WiFi with 4K 8MP Ultra HD resolution captures images with great details.

Discover more when zooming in. It can distinguish people, vehicles and pets* from other objects, providing more accurate alerts. Plus, you can talk back via the camera's built-in mic and speaker.

Contents

- [1 Specs](#)
- [2 Setup and Install](#)
- [3 Install the Camera](#)
- [4 Documents / Resources](#)
 - [4.1 References](#)

Specs



1	Infrared LED
2	Lens
3	Mic
4	Daylight Sensor
S	Spotlight



1. Micro SD Card Slot
2. Reset Button

Setup and Install

Set up the Camera What's in the Box

Note: The package content may vary and update with different version and platforms, please take the below information only for a reference. And the actual package content are subject to the latest information on the product selling page. TrackMix WiFi



Reolink TrackMix
WiFi*1



1m Network
Cable*1



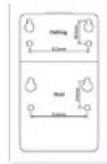
Quick Start Guide*1



Surveillance Sticker*1



Pack of Screws*1



Mounting Template *1



4.5m Power Extension
Cable *1



Power Adapter
12V/2A *1



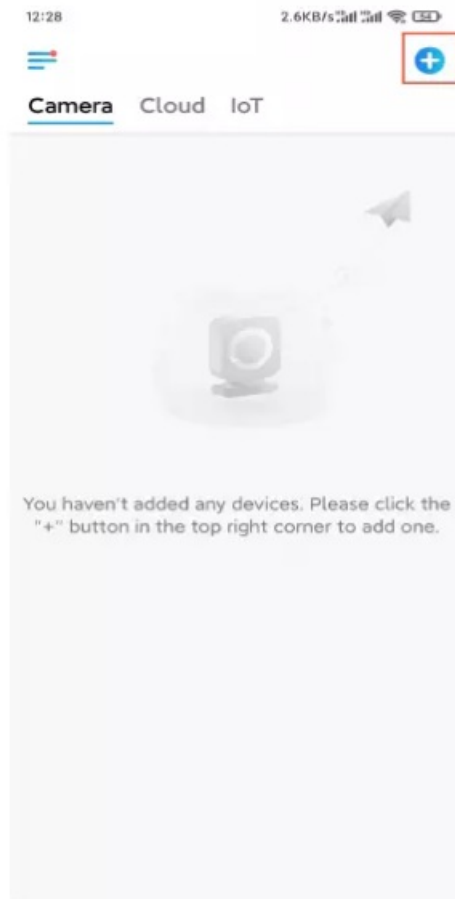
Waterproof Lid *1

Set up the Camera on the App

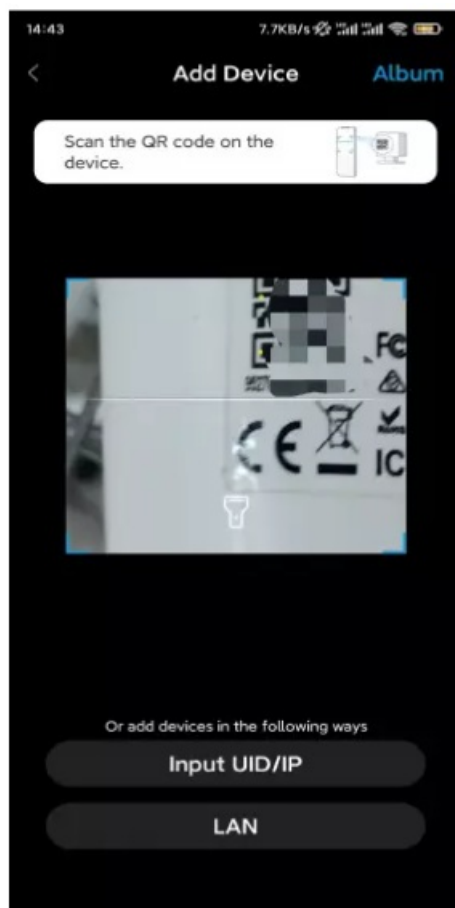
There are two methods to do the initial setup of the camera:

1. with a Wi-Fi connection; 2. with a network cable connection.
1. With Wi-Fi Connection

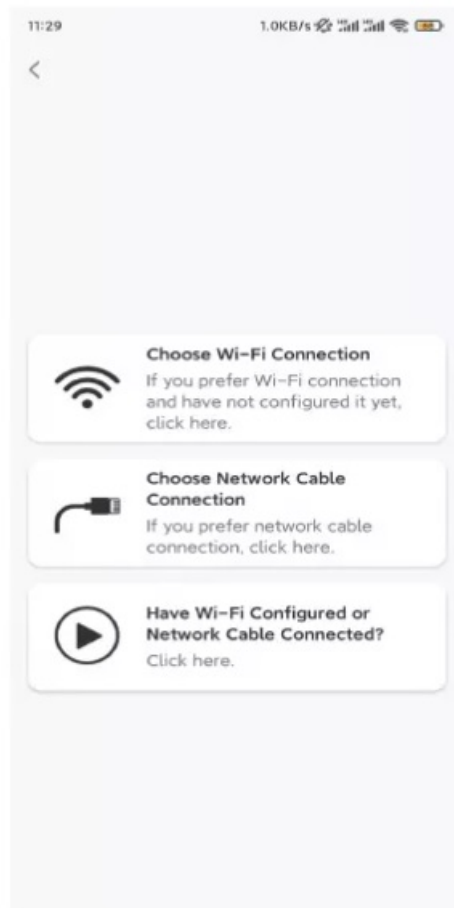
Step 1. Tap the  icon in the top right corner to add the camera



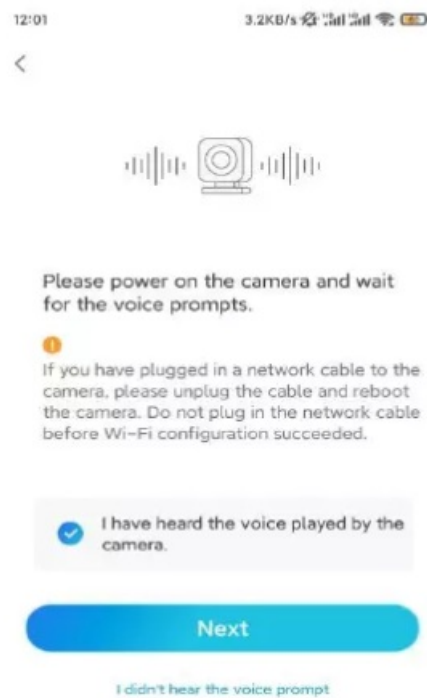
Step 2. Scan the QR code on the camera



Step 3. Tap Choose Wi-Fi Connection to configure the Wi-Fi settings.



Step 4. After you hear the voice prompts from the camera, tick “I have heard the voice played by the camera” and tap Next



Step 5. Select a WiFi network, enter the WiFi password, and tap Next

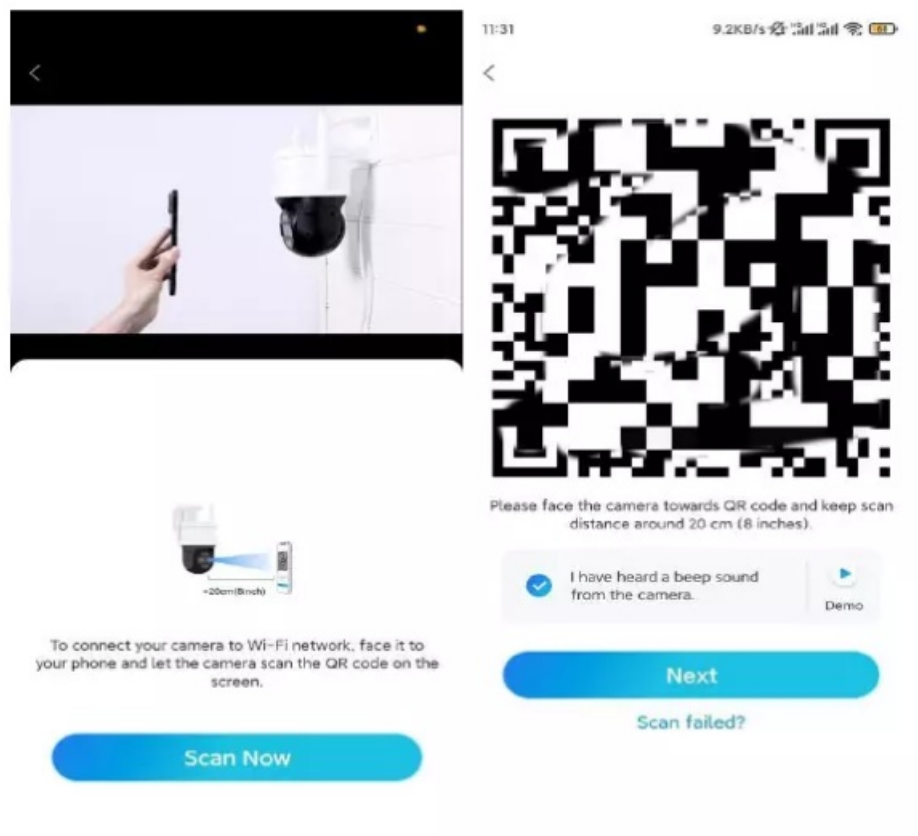


Step 6. Scan the QR code on the app with the camera lens.

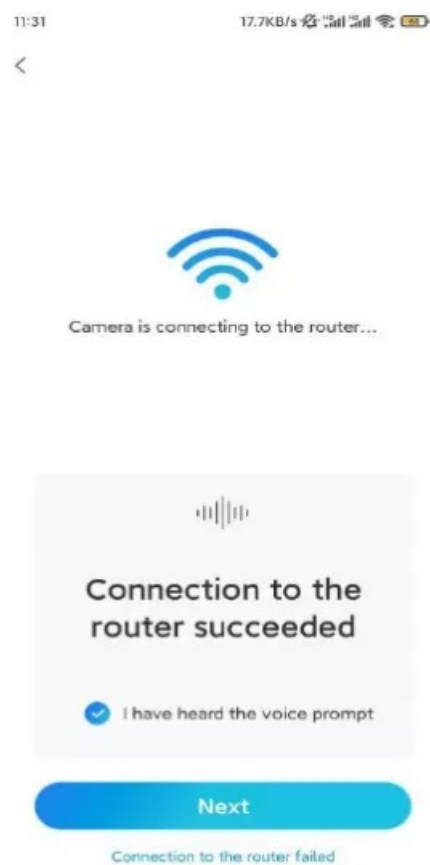
Tap Scan Now. The QR code will be generated and displayed on your phone.

Please hold your phone in front of the camera at a distance of about 20 cm (8 inches) and have the phone face the camera lens to let the camera scan the QR code

After you hear the beep sound, tick "I have heard a beep sound from the camera" and tap Next

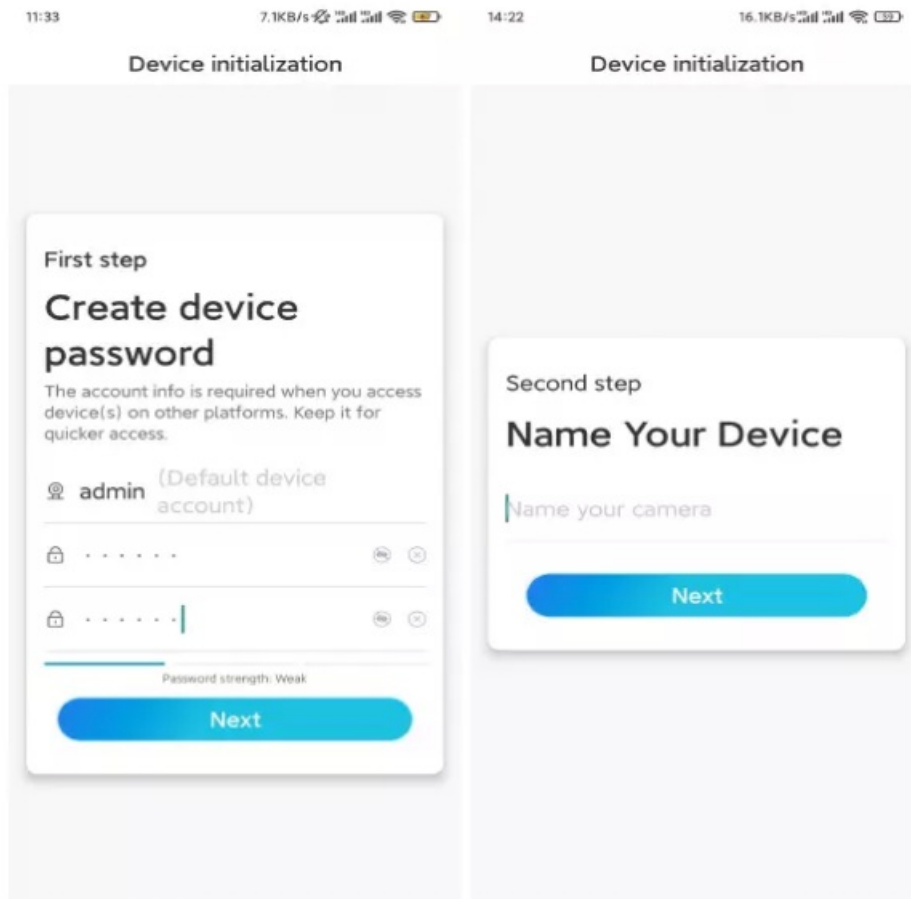


Step 7. After you hear a voice prompt “Connection to the router succeeded” from the camera, tick “I have heard the voice prompt” and tap Next

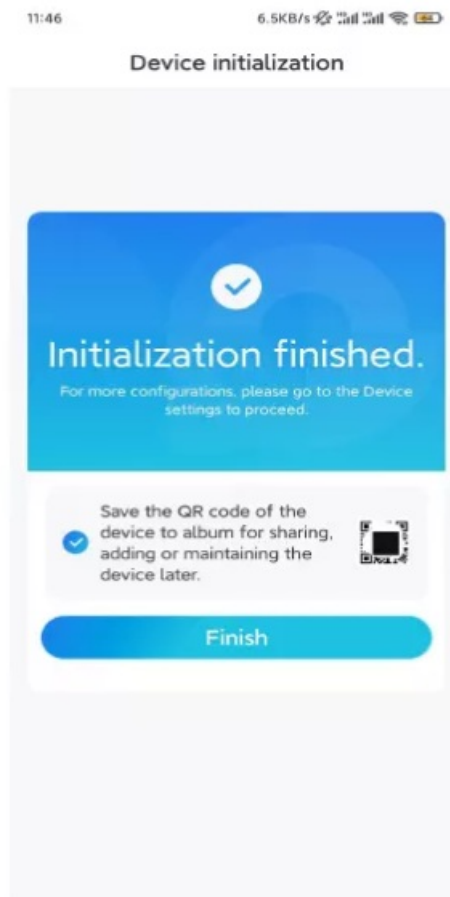


Note: If you hear the voice prompt “Connection to the router failed”, please double-check if you have entered the Wi-Fi information correctly in the previous step.

Step 8. Create a login password and name your camera



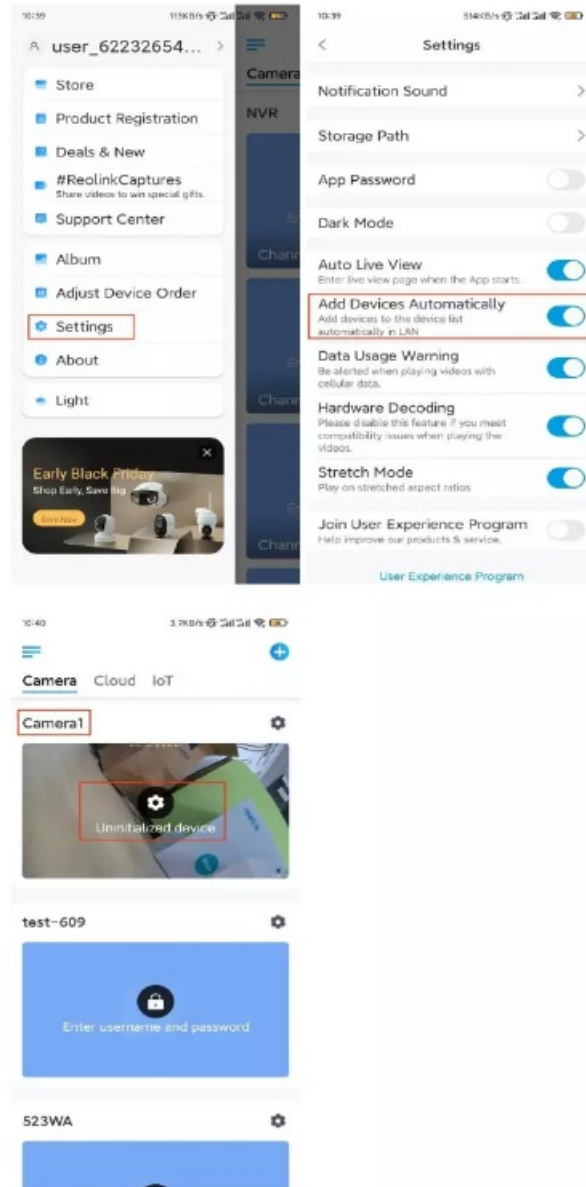
Step 9. Initialization finished. Tap Finish, and you can start live viewing now




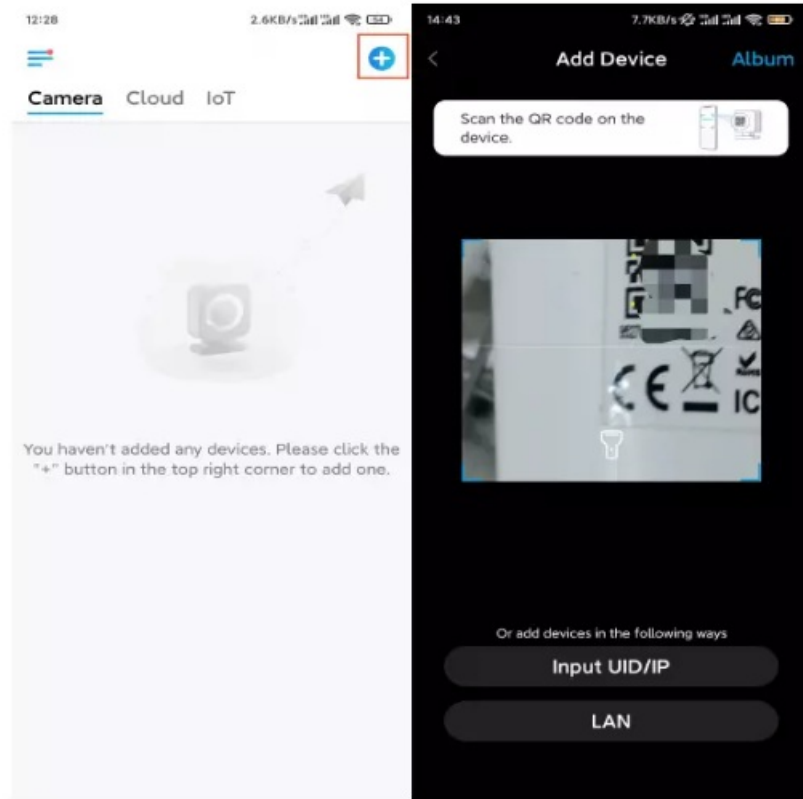
2. With a Network Cable Connection

To do the initial setup, please power on the camera with the DC adapter, connect the camera to your router's LAN port with an Ethernet cable, and follow the steps below.

Step 1. If your phone, the camera, and the router are on the same network and you've enabled the Add Device Automatically option in the App Settings, you can tap and select this device on the Devices page and skip to Step 3

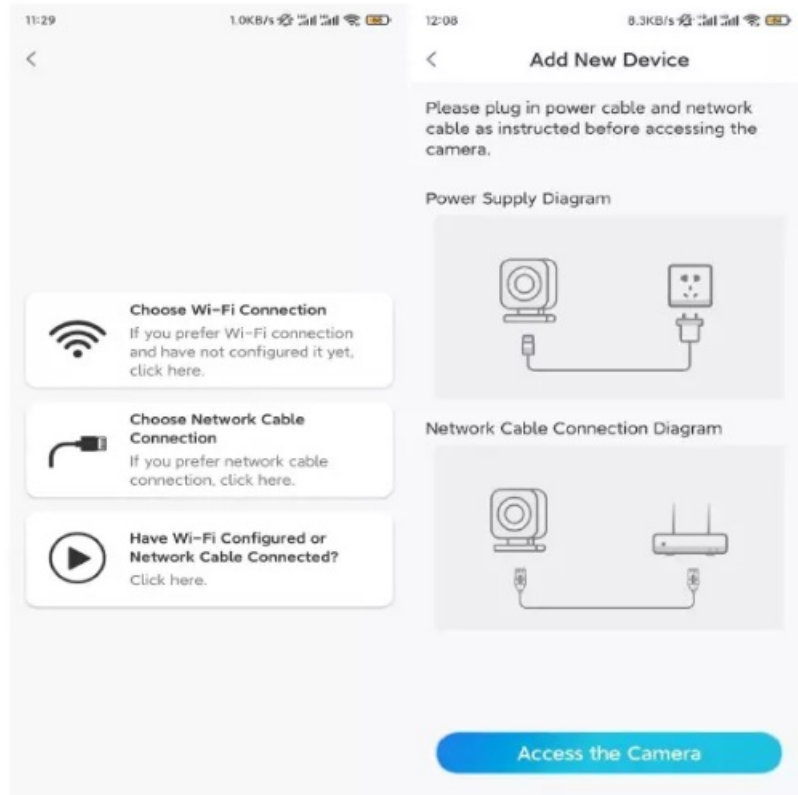


Otherwise, you can tap the  icon in the top right corner and scan the QR code on the camera to add the camera.

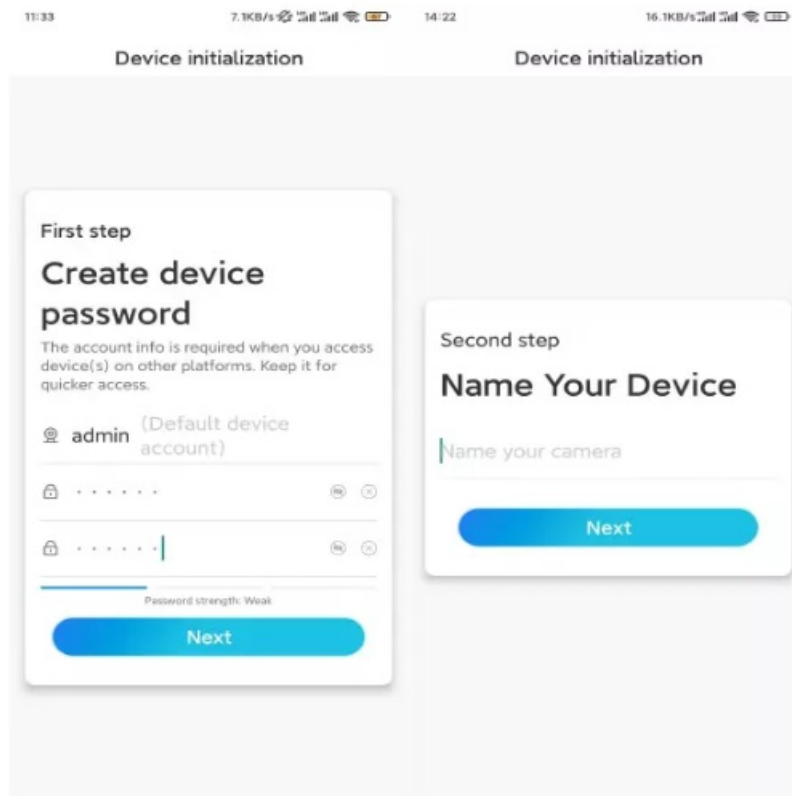


Step 2. Tap Choose Network Cable Connection.

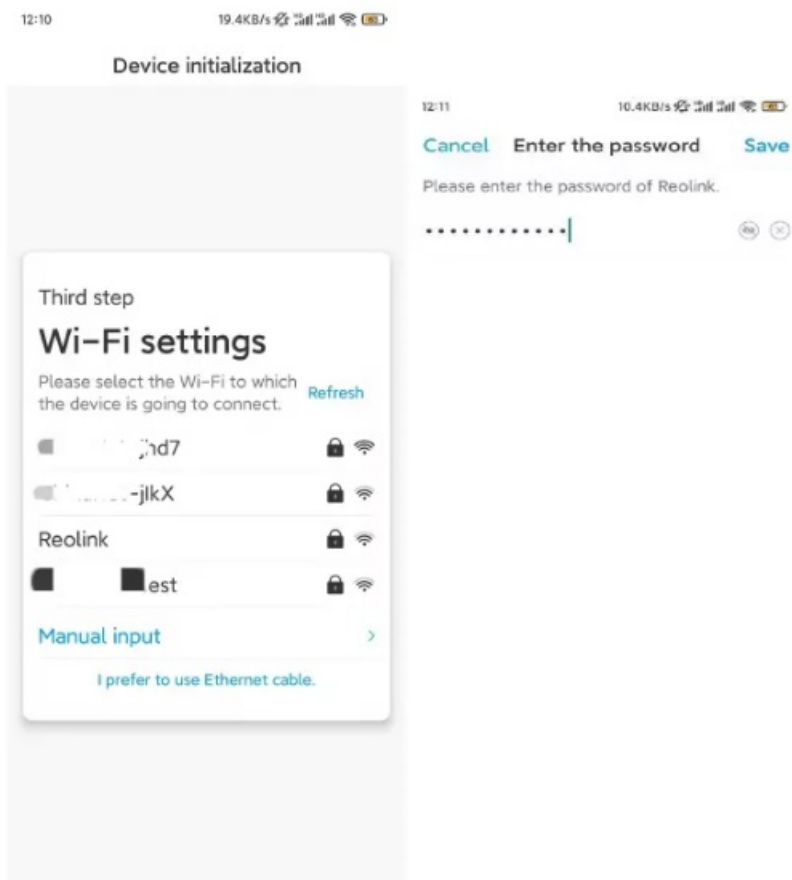
Please make sure the camera is connected in the correct way, as shown in the diagram, and then tap Access the Camera



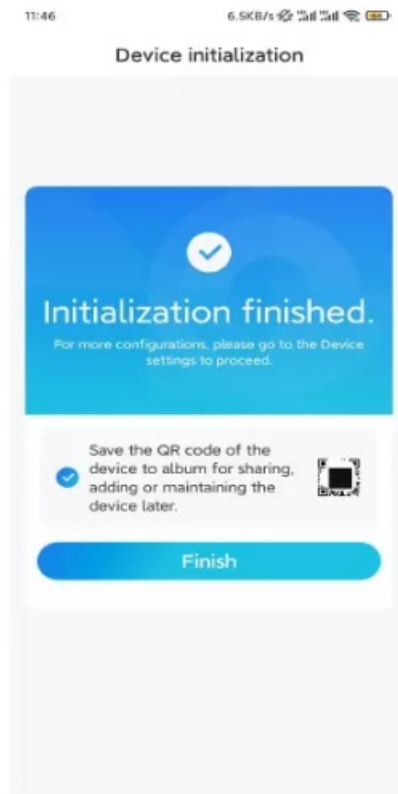
Step 3. Create a device password and name the device .



Step 4. Select the WiFi network that you want to join, enter the password of the WiFi network, and tap Save to save the configuration.



Step 5. Initialization finished. Tap Finish, and you can start live viewing now.



Install the Camera

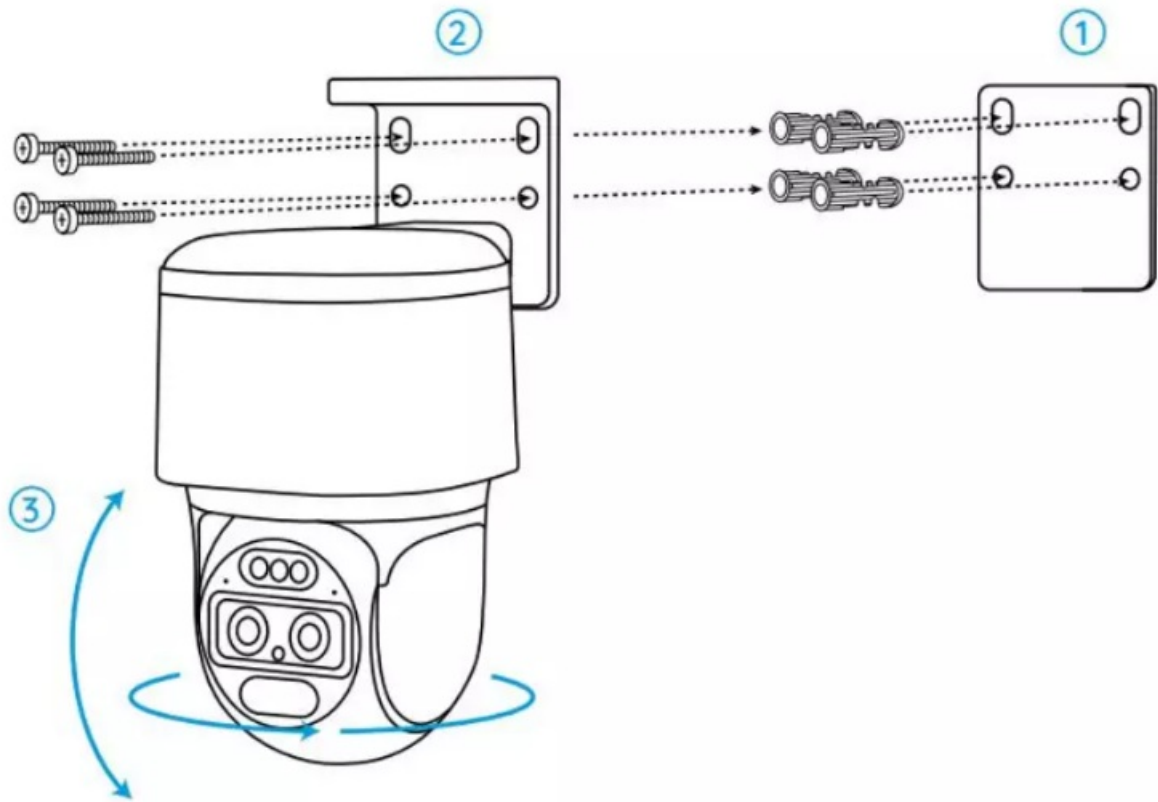
Following the excitement of setting up your TrackMix, you will face up the installation of the camera. So we are here to help you with guides on how to mount the TrackMix camera on the wall or the ceiling. It's up to you.

Mount the Camera on the Wall

Step 1. Stick the mounting hole template on the wall and drill holes correspondingly.

Step 2. Screw the mount base to the wall using the screws included in the package.

Step 3. You may control the camera to pan and tilt via Reolink App or Client to adjust the camera's direction



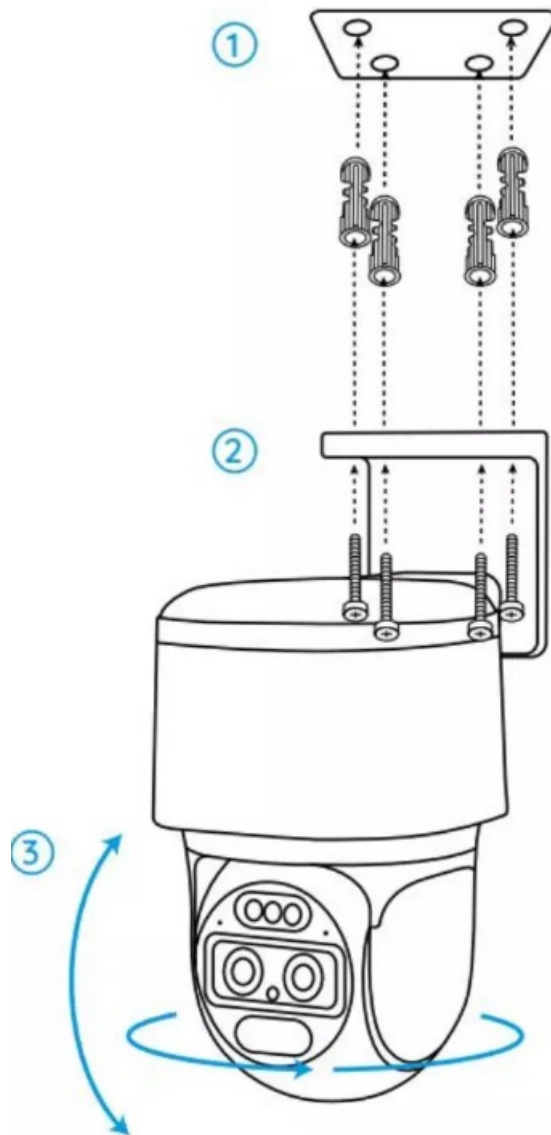
Note: If you install the camera on a pretty hard surface such as drywall, use the drywall anchors included in the package.

Mount the Camera on the Ceiling

Step 1. Stick the mounting hole template on the ceiling and drill holes correspondingly.


Step 2. Install the mount base to the wall using the screws included in the package.

Step 3. Adjust the camera's direction by controlling the camera to pan and tilt via the Reolink App or Client.



Note: Use the drywall anchors included in the package if needed .

Documents / Resources

	<p>reolink TrackMix WiFi Smart 8MP Security Camera [pdf] User Manual</p> <p>TrackMix WiFi Smart 8MP Security Camera, TrackMix, WiFi Smart 8MP Security Camera, Smart 8MP Security Camera, 8MP Security Camera, Security Camera, Camera</p>
-------------------------------------------------------------------------------------	------------------------------------------------------------------------------------------------------------------------------------------------------------------------------------------------------------------------------------------------------------

References

- [🔗 How to Allow Reolink Software to Add Devices Automatically](#)