



## reolink TrackMix WiFi Camera with Auto Tracking User Guide

[Home](#) » [reolink](#) » reolink TrackMix WiFi Camera with Auto Tracking User Guide 

reolink TrackMix WiFi Camera with Auto Tracking User Guide



TrackMix WiFi with 4K 8MP Ultra HD resolution captures images with great details. Discover more when zooming in. It can distinguish people, vehicles and pets\* from other objects, providing more accurate alerts. Plus, you can talk back via the camera's built-in mic and speaker.

## Contents

[1 Specs](#)

[2 Setup and Install](#)

[3 Install the Camera](#)

[4 Documents /  
Resources](#)

[5 Related Posts](#)

## Specs



1	Infrared LED
2	Lens
3	Mic
4	Daylight Sensor
5	Spotlight



1	Micro SD Card Slot
2	Reset Button

## Setup and Install

### Set up the Camera

#### What's in the Box

**Note:** The package content may vary and update with different version and platforms, please take the below information only for a reference. And the actual package content are subject to the latest information on the product sellingpage. TrackMix WiFi

- Reolink TrackMix WiFi\*1



- 1m Network Cable\*1



- Quick Start Guide\*1



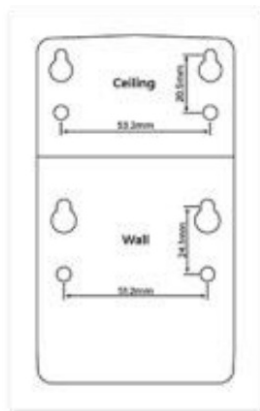
- Surveillance Sticker\*1



- Pack of Screws\*1



- Mounting Template \*1



- 4.5m Power Extension Cable \*1



- Power Adapter 2V/2A\*1



- Waterproof Lid \*1



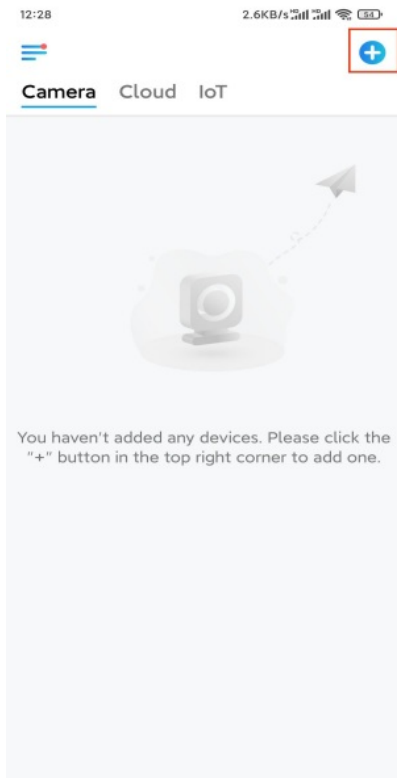
## Set up the Camera on the App

There are two methods to do the initial setup of the camera:

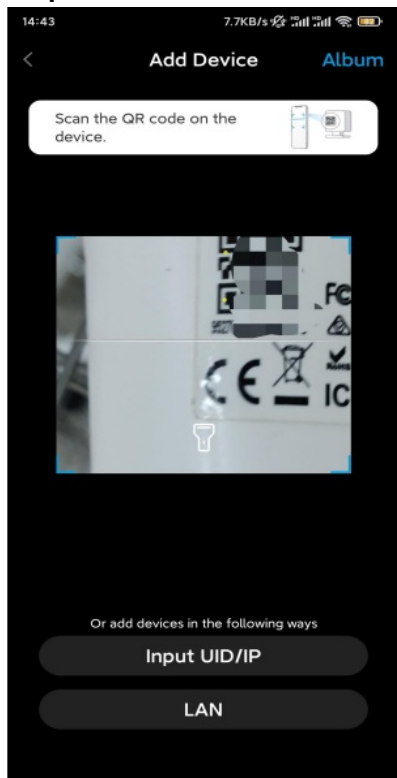
1. with a Wi-Fi connection;
2. with a network cable connection.

1. With Wi-Fi Connection

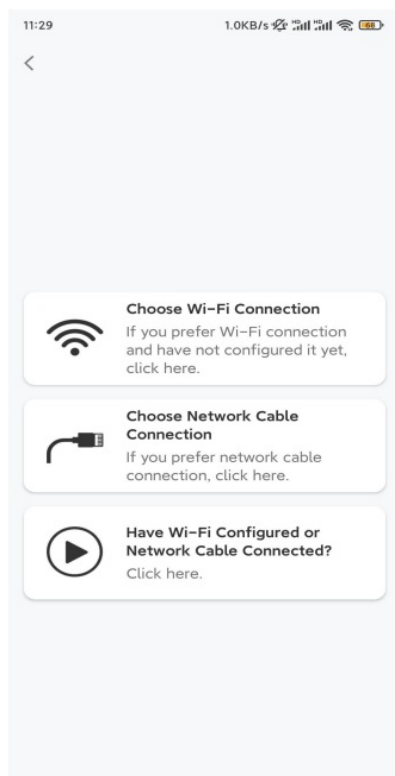
**Step 1.** Tap the icon in the top right corner to add the camera.



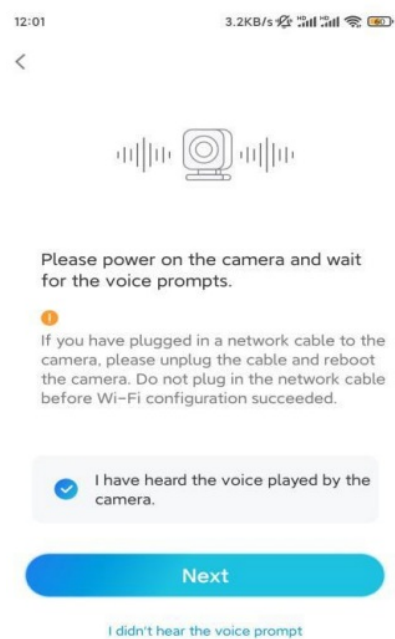
**Step 2.** Scan the QR code on the camera.



**Step 3.** Tap Choose Wi-Fi Connection to configure the Wi-Fi settings.



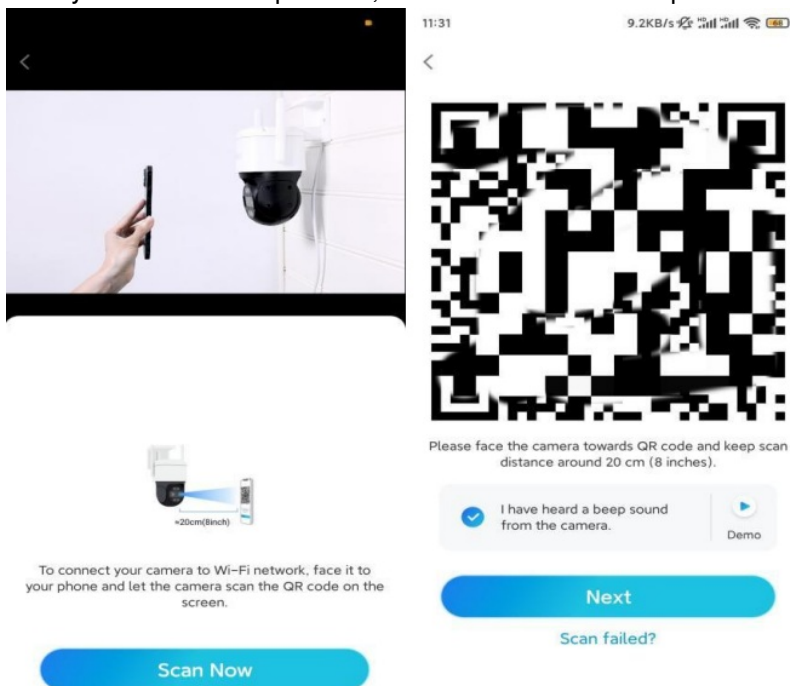
**Step 4.** After you hear the voice prompts from the camera, tick “I have heardth evoice played by the camera“ and tap Next



**Step 5.** Select a WiFi network, enter the WiFi password, and tap Next.



**Step 6.** Scan the QR code on the app with the camera lens. Tap Scan Now. The QR code will be generated and displayed on your phone. Please hold your phone in front of the camera at a distance of about 20 cm(8inches) and have the phone face the camera lens to let the camera scan the QRcode. After you hear the beep sound, tick “I have heard a beep sound fromthe camera” and tap Next



**Step 7.** After you hear a voice prompt “Connection to the router succeeded” fromthe camera, tick “I have heard the voice prompt” and tap Next





Camera is connecting to the router...



Connection to the  
router succeeded

☒ I have heard the voice prompt

Next

Connection to the router failed

**Step 8.** Create a login password and name your camera.

11:33

7.1KB/s

14:22

16.1KB/s

Device initialization

Device initialization

First step

Create device  
password

The account info is required when you access  
device(s) on other platforms. Keep it for  
quicker access.

admin (Default device  
account)

. . . . .

. . . . .

Password strength: Weak

Next

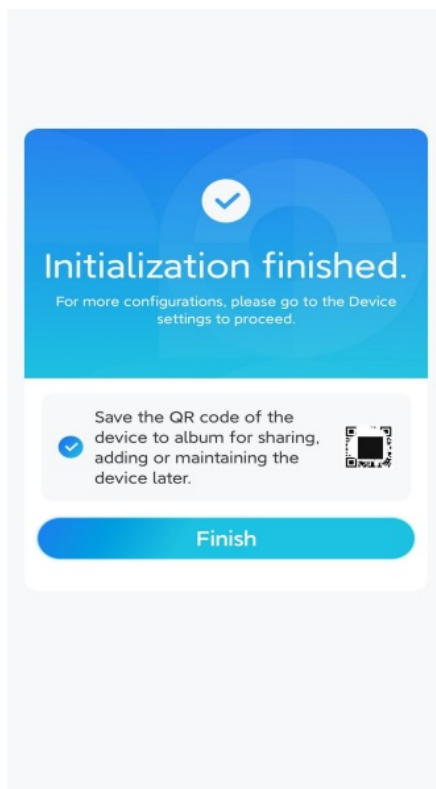
Second step

Name Your Device

Name your camera

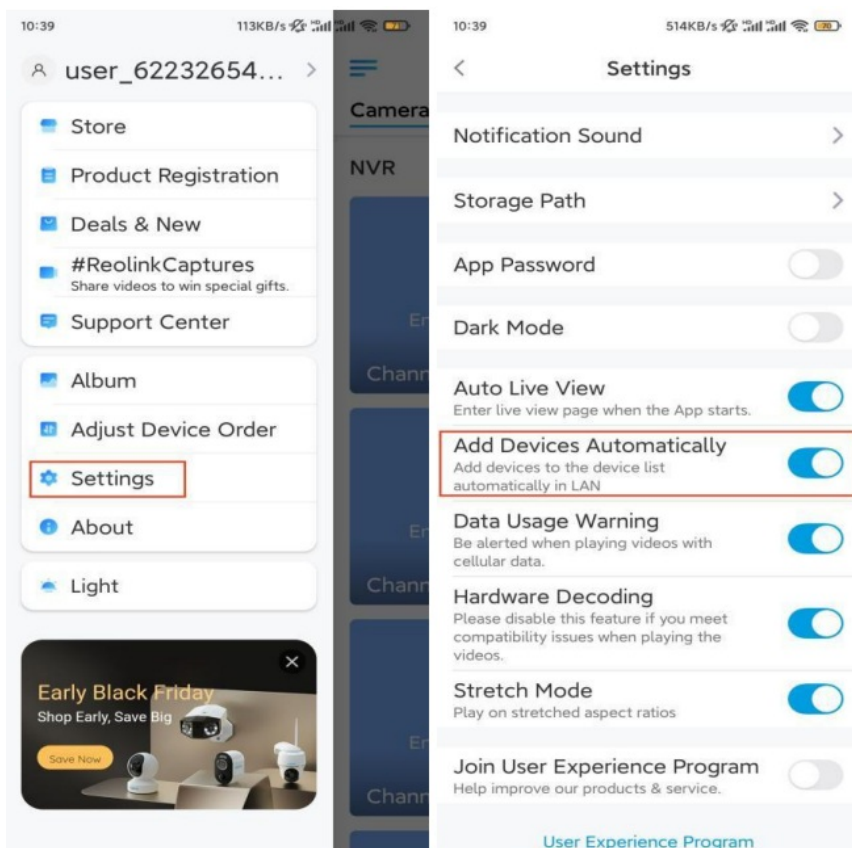
Next

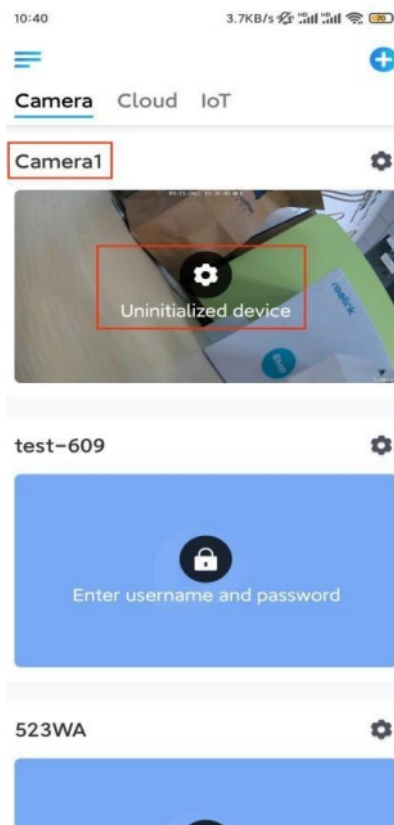
**Step 9.** Initialization finished. Tap Finish, and you can start live viewing now.



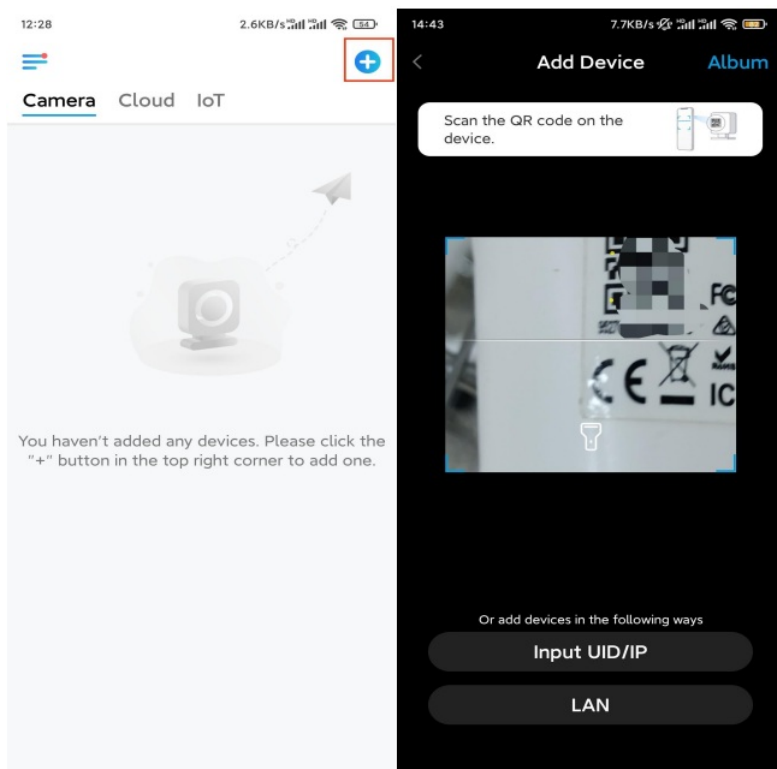
To do the initial setup, please power on the camera with the DC adapter, connect the camera to your router's LAN port with an Ethernet cable, and follow the steps below.

**Step 1.** If your phone, the camera, and the router are on the same network and you've enabled the Add Device Automatically option in the App Settings, you can tap and select this device on the Devices page and skip to Step 3.

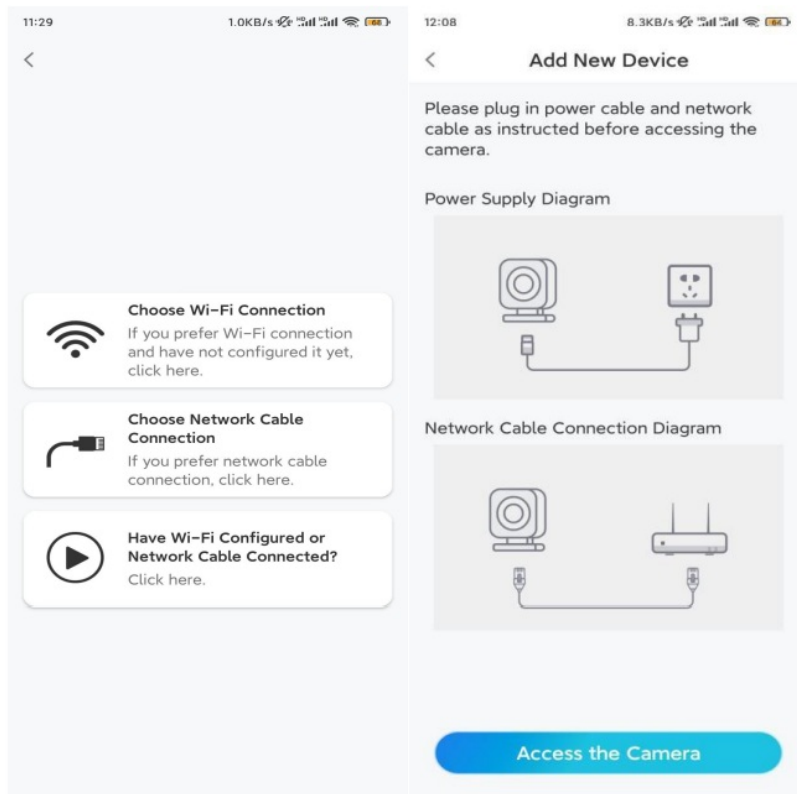




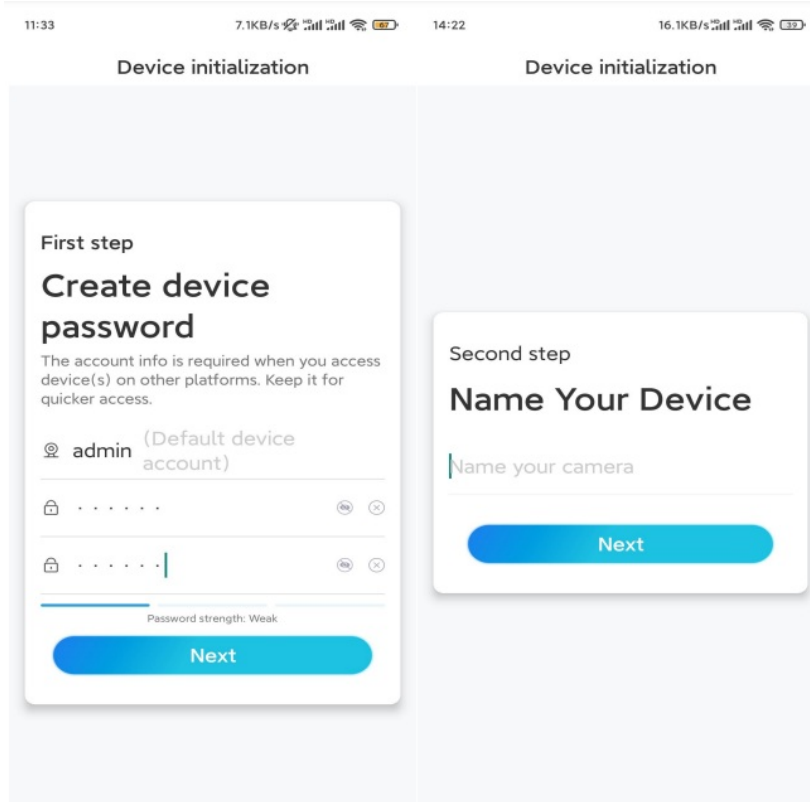
Otherwise, you can tap the icon in the top right corner and scan the QRcode on the camera to add the camera



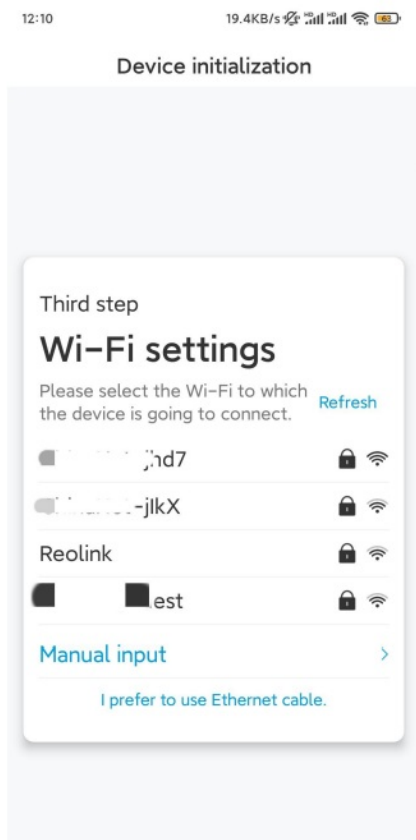
**Step 2.** Tap Choose Network Cable Connection. Please make sure the camera is connected in the correct way, as shown in the diagram, and then tap Access the Camera



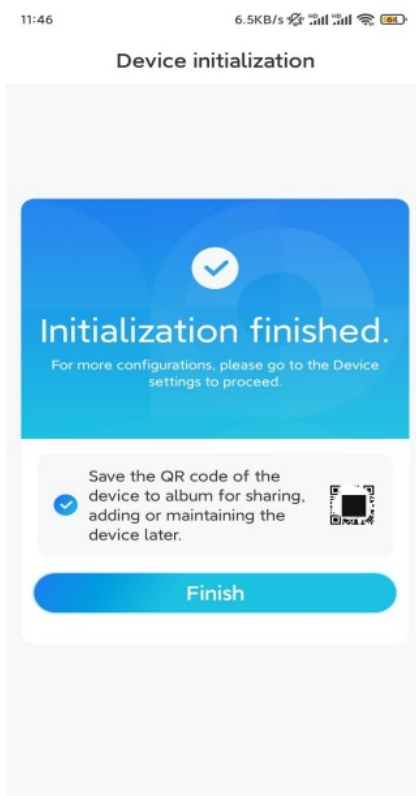
**Step 3. Create a device password and name the device.**



**Step 4. Select the WiFi network that you want to join, enter the password of theWiFi network, and tap Save to save the configuration**



**Step 5.** Initialization finished. Tap Finish, and you can start live viewing now.



## Install the Camera

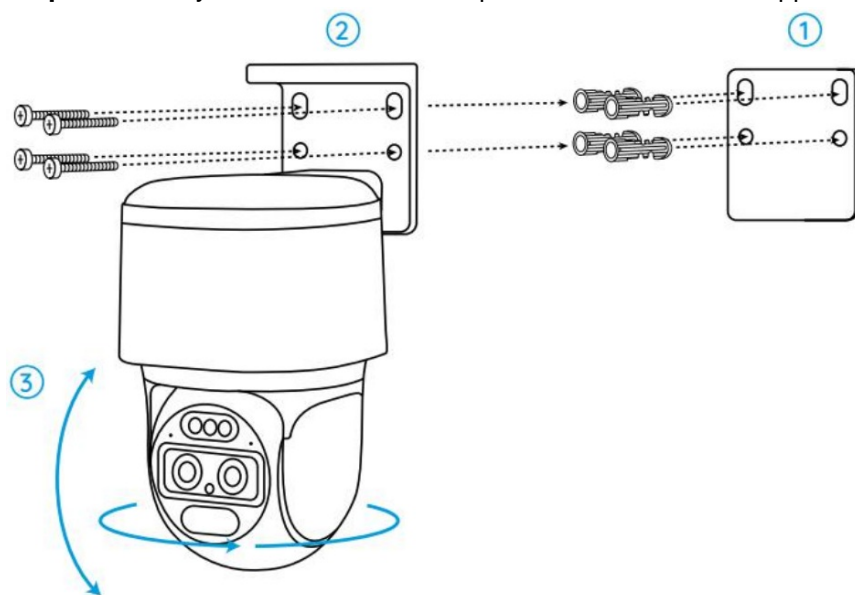
Following the excitement of setting up your TrackMix, you will face up the installation of the camera. So we are here to help you with guides on howto mount the TrackMix camera on the wall or the ceiling. It's up to you.

### Mount the Camera on the Wall

**Step 1.** Stick the mounting hole template on the wall and drill holes correspondingly.

**Step 2.** Screw the mount base to the wall using the screws included in the package.

**Step 3.** You may control the camera to pan and tilt via Reolink App or Client to adjust the camera's direction.



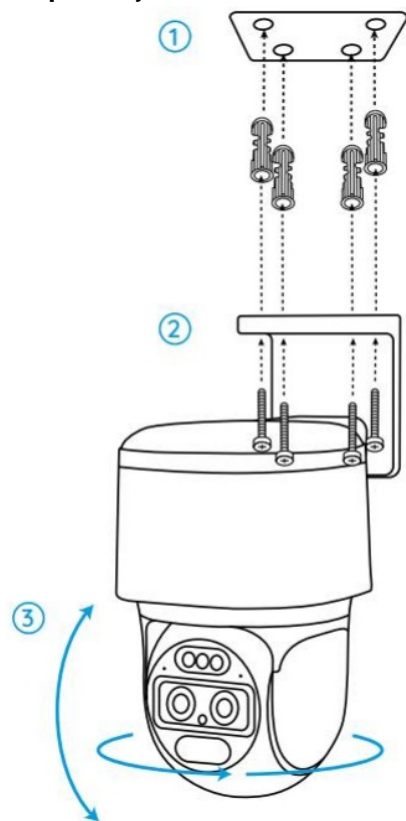
**Note:** If you install the camera on a pretty hard surface such as drywall, use the drywall anchors included in the package.

### Mount the Camera on the Ceiling

**Step 1.** Stick the mounting hole template on the ceiling and drill holes correspondingly.

**Step 2.** Install the mount base to the wall using the screws included in the package.

**Step 3.** Adjust the camera's direction by controlling the camera to pan and tilt via the Reolink App or Client.



**Note:** Use the drywall anchors included in the package if needed.

### Documents / Resources

TrackMix WiFi

TrackMix WiFi is a high-quality, outdoor-rated, IP67-rated, PoE camera with a built-in microphone and speaker. It is designed for use in a variety of environments, including outdoor spaces, and is capable of providing high-quality video and audio. The camera is also capable of providing high-quality video and audio. The camera is also capable of providing high-quality video and audio.

1. Specs



1	Camera ID
2	IP
3	Port
4	Camera Model
5	Camera

[reolink TrackMix WiFi Camera with Auto Tracking](#) [pdf] User Guide

TrackMix WiFi Camera with Auto Tracking, TrackMix, WiFi Camera with Auto Tracking, Auto Tracking, Tracking