



reolink SR3 Solar Panel 2 Instruction Manual

[Home](#) » [reolink](#) » reolink SR3 Solar Panel 2 Instruction Manual 



Operational Instruction
Apply to Reolink Solar Panel,
Reolink Solar Panel 2

Contents

- [1 What's in the Box](#)
- [2 How to Install](#)
- [3 Troubleshooting](#)
- [4 Specifications](#)
- [5 Notification of Compliance](#)
- [6 Documents / Resources](#)
 - [6.1 References](#)

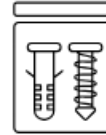
What's in the Box



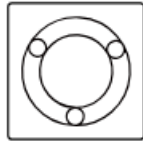
Solar Panel x1



Bracket x1



Pack of Screws x1



Mounting Template x1



Strap x1



Mounting Plate x1

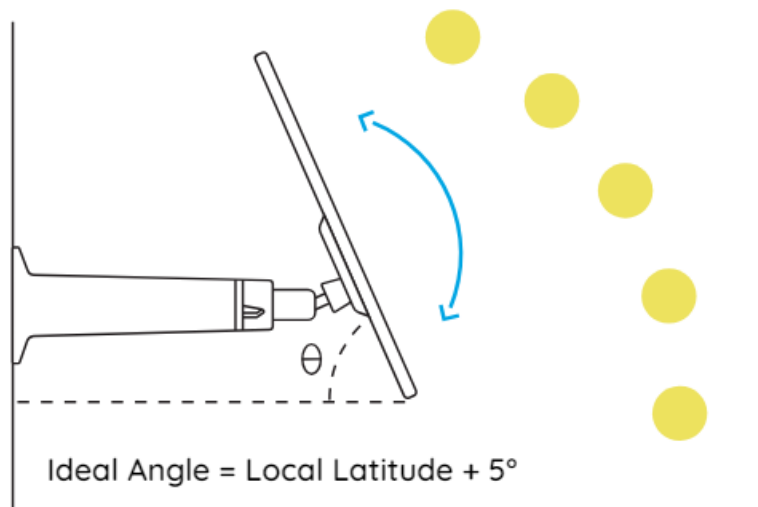


USB-C to Micro USB Cable

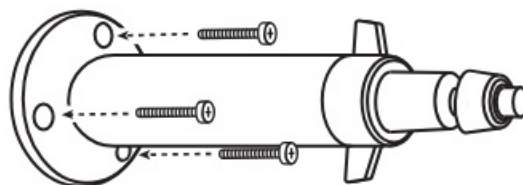
NOTE: The USB-C to Micro USB cable only comes with the separately sold solar panel.

How to Install

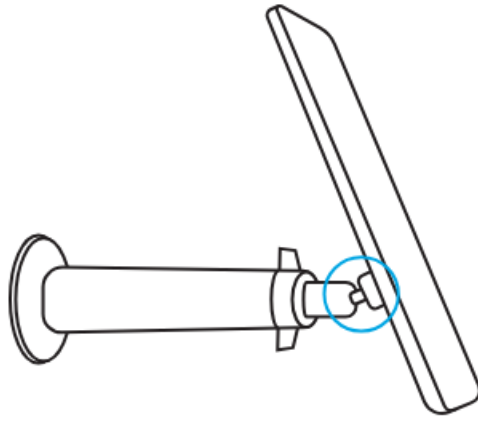
Install the Solar Panel with Screws



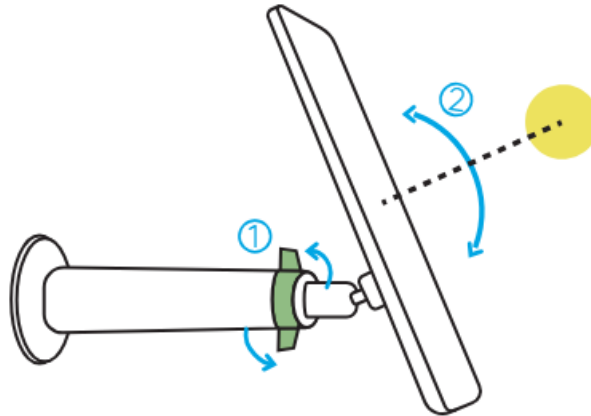
1. Please choose a location for your solar panel that gets the most sunlight throughout the year. The Reolink solar panel needs only a few hours of direct sunlight to sufficiently power up your camera daily. The amount of energy that the solar panel can produce is affected by weather conditions, seasonal changes, geographic locations, etc.



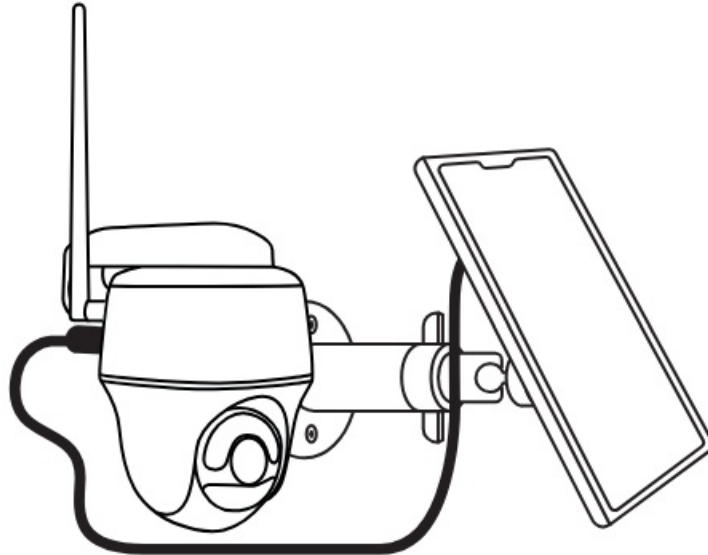
2. Mount the bracket with the mounting template and the screws provided in the package.



3. Slot the solar panel into the bracket and make sure it's secure.



4. Loosen the adjustment knob on the bracket, and adjust the angle of the solar panel to receive the most direct sunlight. Then re-tighten the adjustment knob to secure the panel.

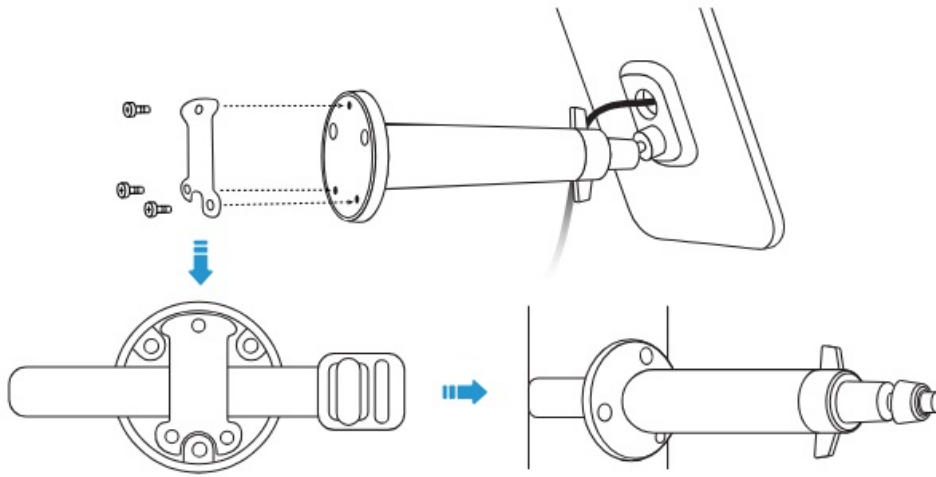


5. Connect the solar panel to the Reolink battery-powered camera.

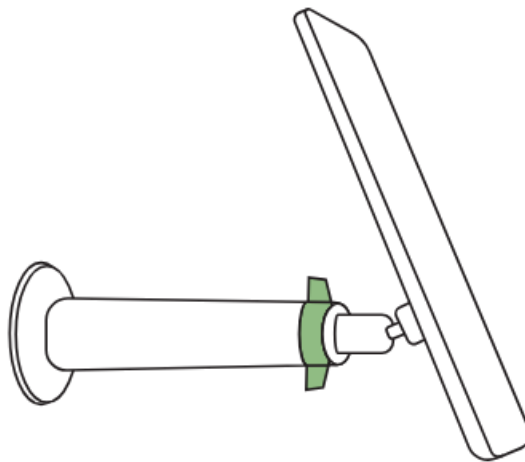
NOTE: Make sure the USB-C connector is plugged in all the way for a weatherproof seal.

Install the Solar Panel with Strap

If you plan to mount the solar panel to a tree, you are recommended to use the strap.



1. Put the strap on the bottom of the bracket. Fix the strap with the mounting plate and secure the mounting plate with screws. Attach the bracket to the tree and fasten the strap.



2. After the bracket is fixed, slot the solar panel into the bracket, adjust the solar panel, and connect the solar panel to camera. (You can refer to steps 3 to 5 in “Install the Solar Panel with Screws”.)

IMPORTANT NOTICE

- Make sure the solar panel is not blocked. The energy harvesting efficiency drops drastically even when a small portion of the solar panel is blocked.
- Please don't install the solar panel completely horizontally. Otherwise your solar panel might accumulate dust and other debris easily. It's advised to install the solar panel angularly to receive the most direct sunlight.
- Wipe the solar panel regularly to remove dust or debris.
- Please charge the batteries in temperature between 0°C and 45°C (32-113°F). The solar panel won't charge the camera at temperatures below 0°C (32°F).

Troubleshooting

Stop Charging the Battery-powered Cameras

If your solar panel can't charge the camera anymore, try the following solutions:

- Unplug and re-insert the charging cable.

Please ensure the connection between the solar panel and camera is stable.

- Make sure that your Reolink solar panel points toward the sun and is not shaded by trees, buildings, or other objects.
- Make sure that your camera is not charged at temperatures below 0°C (32°F) or above 45°C (113°F).

If these don't work, contact Reolink <https://support.reolink.com>

Specifications

Physical Parameters

For Reolink Solar Panel

Size: 185.4 x 120.4 x 175mm

Cable Length: 4 Meters

Weight: 223.06g

For Reolink Solar Panel 2

Size: 210.6 x 174.6 x 185mm

Cable Length: 4 Meters

Weight: 361.29g

General

Charging Temperature:

0°C to 45°C (32°F to 113°F)

Operating Temperature:

-10°C to 55°C (14°F to 131°F)

Weather Resistance:
IP65 certified weatherproof

Notification of Compliance

FCC Compliance Statement

This device complies with Part 15 of FCC Rules. Operation is subject to the following two conditions: (1) this device may not cause harmful interference, and (2) this device must accept any interference received, including interference that may cause undesired operation. For more information, visit: <https://reolink.com/fcc-compliance-notice/>.

Simplified EU Declaration of Conformity

Reolink declares that this device is in compliance with the essential requirements and other relevant provisions of Directive 2014/30/EU.



Correct Disposal of This Product

This marking indicates that this product should not be disposed with other household wastes throughout the EU. To prevent possible harm to the environment or human health from uncontrolled waste disposal, recycle it responsibly to promote the sustainable reuse of material resources. To return your used device, please use the return and collection systems or contact the retailer where the product was purchased. They can take this product for environment safe recycling.

Limited Warranty

This product comes with a 2-year limited warranty that is valid only if purchased from Reolink Official Store or a Reolink authorized reseller. Learn more: <https://reolink.com/warranty-and-return/>.

Terms and Privacy

Use of the product is subject to your agreement to the Terms of Service and Privacy Policy at reolink.com. Keep out of reach of children.

End User License Agreement

By using the Product Software that is embedded on the Reolink product, you agree to the terms of this End User License Agreement ("EULA") between you and Reolink. Learn more: <https://reolink.com/eula/>.

Technical Support

If you need any technical help, please visit our official support site and contact our support team before returning the products, <https://support.reolink.com>.

 CET PRODUCT SERVICE SP. Z O.O.

Ul. Długa 33 102 Zgierz, Polen


 CET PRODUCT SERVICE LTD.

Beacon House Stokenchurch Business Park, Ibstone Rd,
Stokenchurch High Wycombe, HP14 3FE, United Kingdom

July 2023

QSG1_A

58.03.005.0130

  @ReolinkTech <https://reolink.com>

Documents / Resources



[reolink SR3 Solar Panel 2](#) [pdf] Instruction Manual
SR3 Solar Panel 2, SR3, Solar Panel 2, Panel 2

References

- [🔗 Reolink Official: Security Cameras and Systems for Home & Business](#)
- [🔗 Garantie & Rückgabe – Reolink](#)
- [🔗 Sitio web oficial de Reolink: cámaras y sistemas de seguridad domésticos y empresariales](#)
- [🔗 Reolink officiel : caméras de sécurité pour la maison et l'entreprise](#)
- [🔗 Garantie et Retour - Reolink](#)
- [🔗 Reolink Official: telecamere e sistemi di sicurezza per la casa e l'azienda](#)
- [🔗 Garanzia e reso – Reolink](#)
- [🔗 Warranty & Return – Reolink](#)
- [🔗 Reolink Support - Official Reolink Help Center](#)
- [🔗 User Manual](#)

[Manuals+](#), [Privacy Policy](#)

This website is an independent publication and is neither affiliated with nor endorsed by any of the trademark owners. The "Bluetooth®" word mark and logos are registered trademarks owned by Bluetooth SIG, Inc. The "Wi-Fi®" word mark and logos are registered trademarks owned by the Wi-Fi Alliance. Any use of these marks on this website does not imply any affiliation with or endorsement.