

**reolink**  
Be Prepared, Be Reolink  
**RLK8-500V4**  
**Security Camera**  
**System**



# reolink RLK8-500V4 Security Camera System User Guide

[Home](#) » [reolink](#) » reolink RLK8-500V4 Security Camera System User Guide 

## Contents

- 1 [reolink RLK8-500V4 Security Camera System](#)
- 2 [FAQ](#)
- 3 [What's in the Box](#)
- 4 [Introduce the NVR](#)
- 5 [Camera Introduction](#)
- 6 [Connection Diagram](#)
- 7 [Set up the NVR System](#)
- 8 [Mount the Camera](#)
- 9 [Troubleshooting](#)
- 10 [Specification](#)
- 11 [Notification of Compliance](#)
- 12 [Documents / Resources](#)
  - 12.1 [References](#)



**reolink RLK8-500V4 Security Camera System**



## **FAQ**

### **No Video Output on Monitor/TV**

If you are experiencing no video output, check the connections between the NVR and monitor/TV. Ensure all cables are securely connected.

### **Failed to Access PoE NVR Locally**

If you are unable to access the NVR locally, verify that the network settings are correct and try restarting the NVR. If the issue persists, contact Reolink support for assistance.

### **Failed to Access PoE NVR Remotely**

If remote access is unsuccessful, ensure that your network settings allow for remote connections. Check firewall settings and router configurations. If problems persist, contact Reolink support for further troubleshooting.

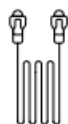
### **What's in the Box**



NVR



Camera



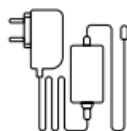
1m Network  
Cable



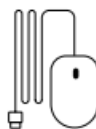
18m Network  
Cable



HDMI Cable



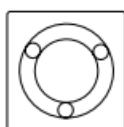
NVR  
Power Adapter



USB Mouse



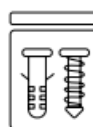
Quick Start  
Guide



Mounting  
Hole Template



Surveillance  
Sticker

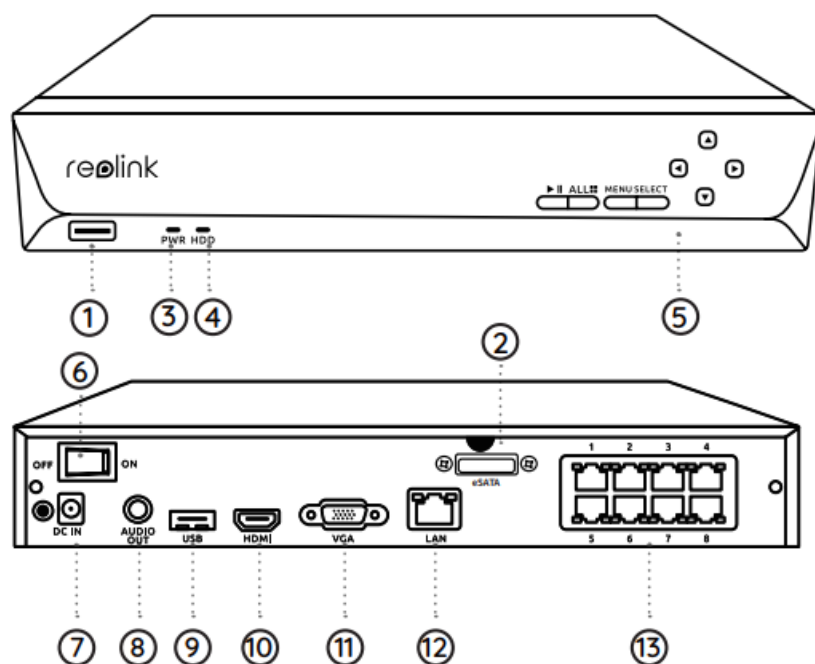


Pack of  
Screws



Waterproof  
Lid

## Introduce the NVR



1. USB Port
2. eSATA
3. Power LED
4. HDD LED
5. Control Panel
6. Power Switch
7. Power Input|

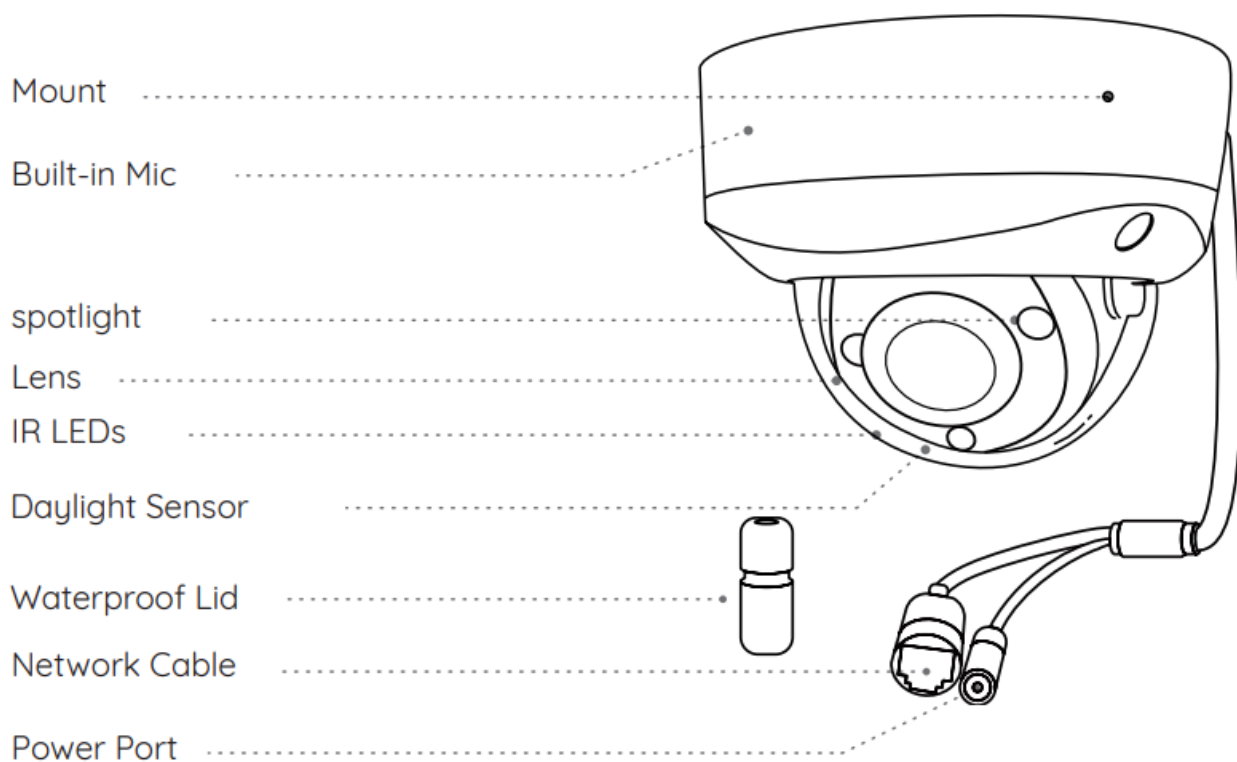
8. Audio Out
9. USB Port
10. HDMI Port
11. VGA Port
12. LAN Port
13. PoE Interface

**Different states of the status LEDs :**

Power LED: Solid green to indicate the NVR is powered on.

HDD LED: Flashing red to indicate the hard drive is operating properly.

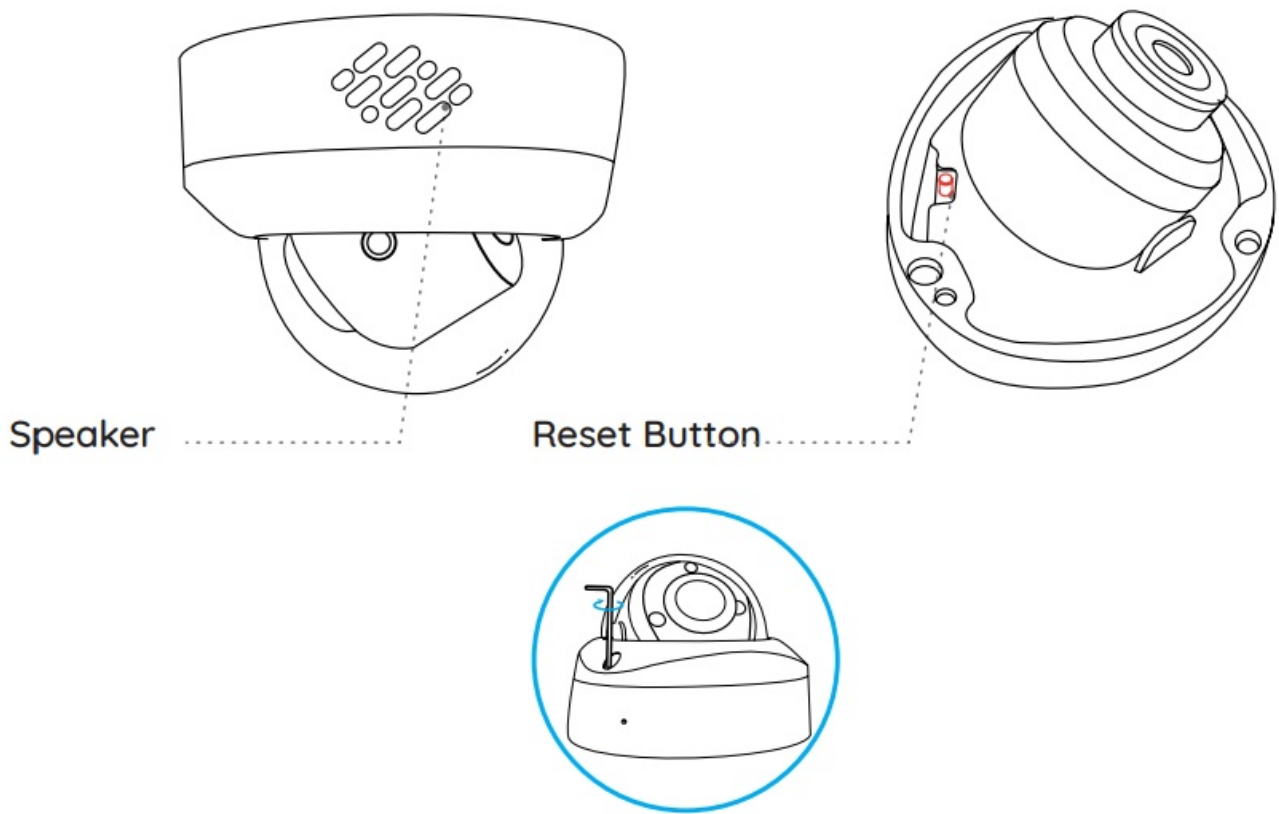
**NOTE:** Quantity of devices and accessories vary by different models that you purchase.

**Camera Introduction****PoE Camera****NOTE:**

- Different types of cameras are introduced in this section. Please check out the camera included in the package and check out the details from the corresponding introduction above.
- The actual appearance and components may vary with different model of product.

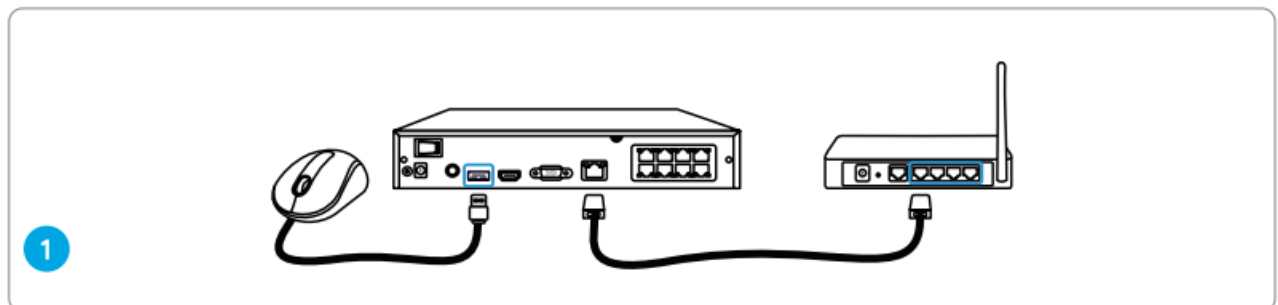
**Reset Button**

Press and hold the reset button for 5s with a pin to restore factory settings.

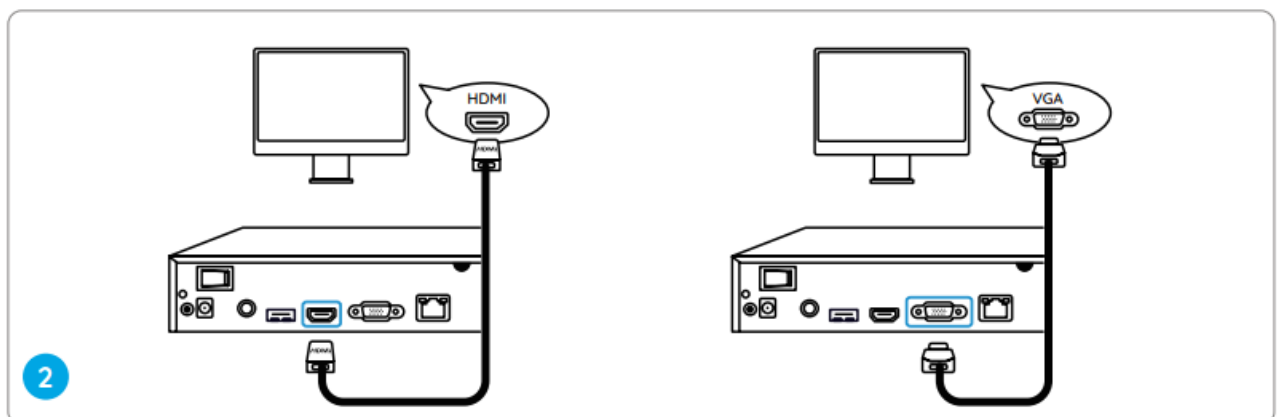


## Connection Diagram

1. Connect the NVR (LAN port) to your router with an Ethernet cable. Next, connect the mouse to the USB port of the NVR.

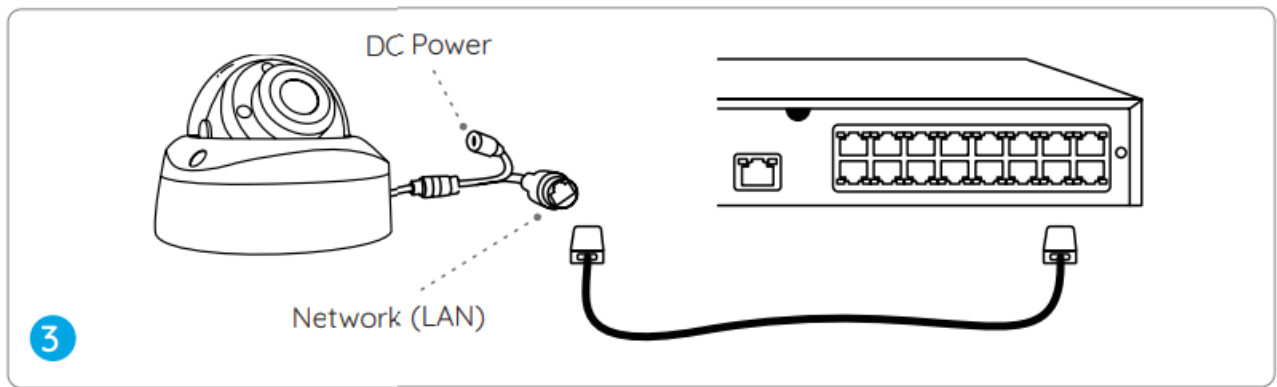


2. Connect the NVR to the monitor with a VGA or HDMI cable.

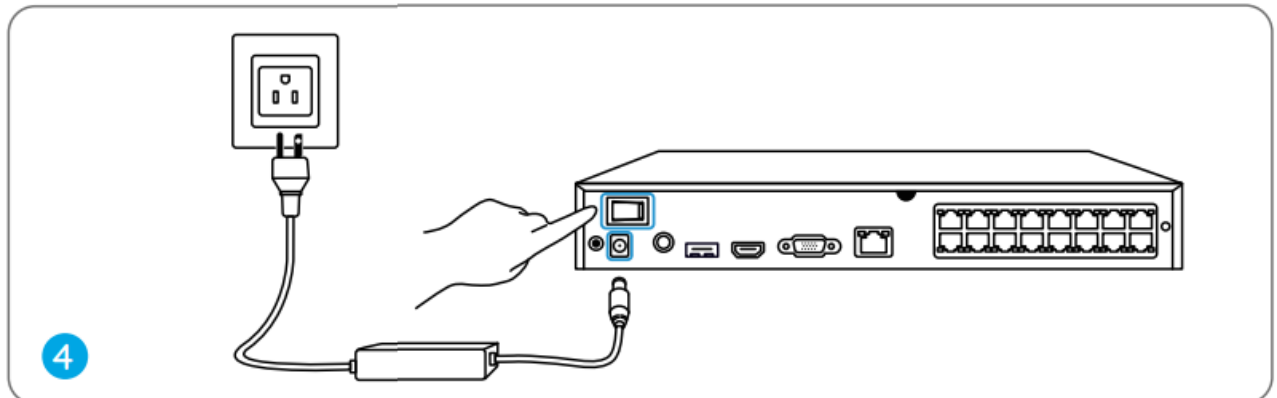


**NOTE:** There is no VGA cable and monitor included in the package.

3. Connect cameras to PoE ports on the NVR via Ethernet cable.



4. Connect the NVR to a power outlet and turn on power switch.



**NOTE:** Some Reolink WiFi cameras also work with Reolink PoE NVR. For more information, visit the official website and search Make Reo-link WiFi Cameras Work with Reolink PoE-NVRs.

## Set up the NVR System

A setup wizard will guide you through the NVR system configuration process. Please set a password for your NVR (for the initial access) and follow the wizard to configure the system.

## Access the System via Smartphone or PC

Download and launch the Reolink App or Client software and follow the instructions to access the NVR.

### On Smartphone

Scan to download the Reolink App



### On PC

Download path: Go to reolink official website Support > App & Client

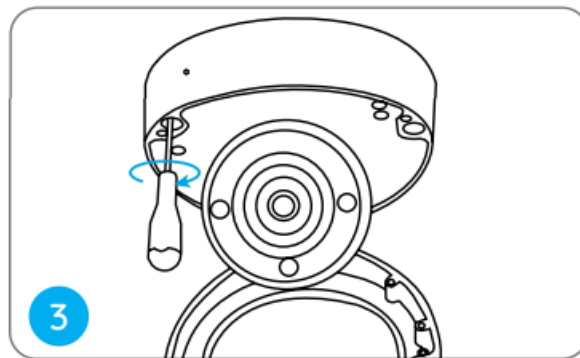
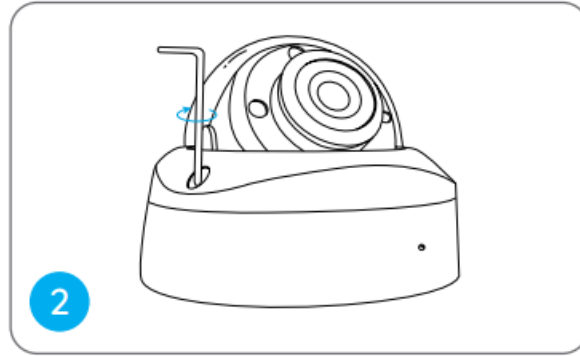
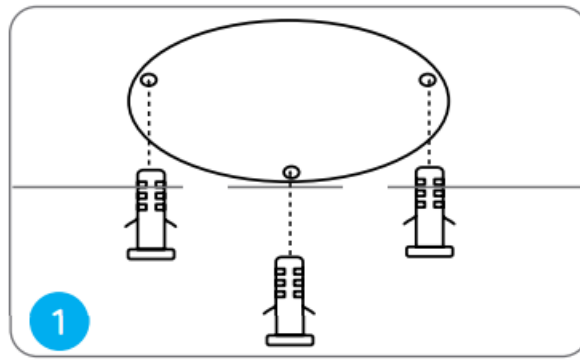
## **Mount the Camera**

### **Installation Tips**

- Do not face the camera towards any light sources.
- Do not remove the protective film from the dome cover until the installation is complete.
- Do not point the camera towards a glass window. Or, it may result in poor image quality because of the window glare by infrared LEDs, ambient lights or status lights.
- Do not place the camera in a shaded area and point it towards a well-lit area. Or, it may result in poor image quality. To ensure the best image quality, the lighting condition for both the camera and the capture object shall be the same.
- To ensure better image quality, it's recommended to clean the dome cover with a soft cloth from time to time.
- Make sure the power ports are not directly exposed to water or moisture and not blocked by dirt or other elements.
- With IP waterproof ratings, the camera can work properly under conditions like rain and snow. However, it doesn't mean the camera can work underwater.
- Do not install the camera at places where rain and snow can hit the lens directly.

### **Install the Camera**

1. Put the mounting template on the ceiling and drill holes at the indicated locations, then insert the drywall anchors.
2. Screw the dome cover off the camera base with the hex key.  
NOTE: Keep the protective film on the dome cover until the installation is complete.
3. Screw the camera base to the ceiling.

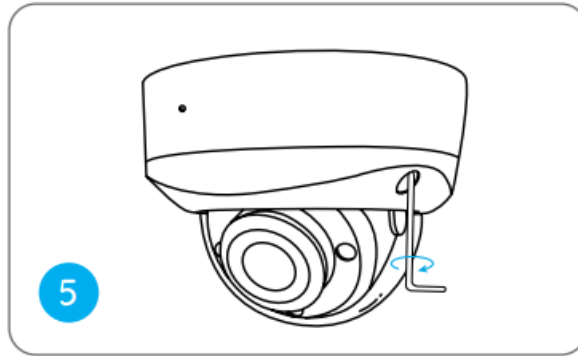
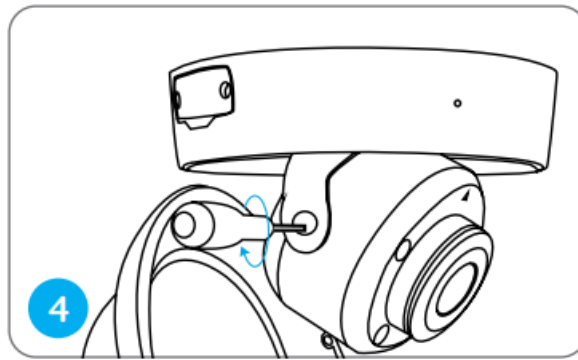


4. Adjust the camera's viewing angle as needed.

5. Attach the dome cover to the camera base by tightening the screws.

NOTE: Remove the protective film from the dome cover after the installation.





## Troubleshooting

### No Video Output on the Monitor/TV

If there's no video output on the monitor from Reolink NVR, please try the following solutions:

- TV/monitor resolution should be at least 720p or above.
- Make sure your NVR is powered on.
- Double check the HDMI/VGA connection, or swap another cable or-monitor to test.

If it still doesn't work, please contact Reolink Support

### Failed to Access the PoE NVR Locally

If you failed to access the PoE NVR locally via mobile phone or PC, please try the following solutions:

- Connect the NVR (LAN port) to your router with a network cable.
- Swap another Ethernet cable or plug the NVR to other ports on the router.
- Go to Menu -> System -> Maintenance and restore all settings.

If it still doesn't work, please contact Reolink

### Failed to Access the PoE NVR Remotely

If you failed to access the PoE NVR remotely via mobile phone or PC, please try the following resolutions:

- Make sure you can locally access this NVR system.
- Go to NVR Menu -> Network -> Network > Advanced and make sure that UID Enable is selected.
- Please connect your phone or PC under the same network (LAN) of your NVR and see if you can visit any website to verify whether there is Internet access available.
- Please reboot your NVR and router and try again.

If it still doesn't work, please contact Reolink

## Specification

### NVR

- Operating Temperature: -10°C to 45°C
- Size: 255 x 41 x 230mm
- Weight: 1.4kg

### Camera

- Operating Temperature: -10°C to 55°C (14°F to 131°F)
- Size: 570g
- Weight: Φ 117×86 mm

## Notification of Compliance

### FCC Compliance Statement

This device complies with Part 15 of the FCC Rules. Operation is subject to the following two conditions: (1) this device may not cause harmful interference, and (2) this device must accept any interference received, including interference that may cause undesired operation.

**NOTE:** This equipment has been tested and found to comply with the limits for a Class B digital device, pursuant to Part 15 of the FCC Rules. These limits are designed to provide reasonable protection against harmful interference in a residential installation. This equipment generates, uses and can radiate radio frequency energy and, if not installed and used in accordance with the instructions, may cause harmful interference to radio communications. However, there is no guarantee that interference will not occur in a particular installation. If this equipment does cause harmful interference to radio or television reception, which can be determined by turning the equipment off and on, the user is encouraged to try to correct the interference by one or more of the following measures:

- Reorient or relocate the receiving antenna.
- Increase the separation between the equipment and receiver.
- Connect the equipment into an outlet on a circuit different from that to which the receiver is connected.
- Consult the dealer or an experienced radio/TV technician for help.
- To maintain compliance with FCC's RF Exposure guidelines, This equipment should be installed and operated with minimum distance between 20cm the radiator your body: Use only the supplied antenna.

### ISED Compliance Statements

This Class B digital apparatus complies with Canadian ICES-003.

### Simplified EU Declaration of Conformity

Reolink declares that this device is in compliance with the essential requirements and other relevant provisions of EMC Directive 2014/30/EU and LVD 2014/35/EU.

### Correct Disposal of This Product

This marking indicates that this product should not be disposed with other household wastes. throughout the EU. To prevent possible harm to the environment or human health from uncontrolled waste disposal, recycle it responsibly to promote the sustainable reuse of material resources. To return your used device, please use the return and collection systems or contact the retailer where the product was purchased. They can take this product for environmentally safe recycling.

**Limited Warranty**

This product comes with a 2-year limited warranty that is valid only if purchased from Reolink Official Store or a Reolink authorized reseller.


**Terms and Privacy**

Use of the product is subject to your agreement to the Terms of Service and Privacy Policy at reolink official website. Keep out of reach of children.

**End User License Agreement**

By using the Product Software that is embedded on the Reolink product, you agree to the terms of this End User License Agreement(“EULA”) between you and Reolink.

**Documents / Resources**

	<a href="#">reolink RLK8-500V4 Security Camera System</a> [pdf] User Guide RLK8-500V4, RLK8-800V4, RLK8-1200V4, RLK8-500V4 Security Camera System, RLK8-500V4, Security Camera System, Camera System, System
--	---

**References**

- [User Manual](#)

Manuals+, Privacy Policy

This website is an independent publication and is neither affiliated with nor endorsed by any of the trademark owners. The "Bluetooth®" word mark and logos are registered trademarks owned by Bluetooth SIG, Inc. The "Wi-Fi®" word mark and logos are registered trademarks owned by the Wi-Fi Alliance. Any use of these marks on this website does not imply any affiliation with or endorsement.