



reolink RLC-833A 4K Security Camera Instruction Manual

[Home](#) » [reolink](#) » reolink RLC-833A 4K Security Camera Instruction Manual 

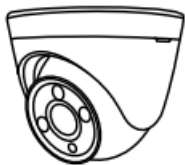


Operational Instruction
Apply to: RLC-833A, RLC-1224A

Contents

- [1 What's in the Box](#)
- [2 Camera Introduction](#)
- [3 Connection Diagram](#)
- [4 Set up the Camera](#)
- [5 Mount the Camera](#)
- [6 Troubleshooting](#)
- [7 Specifications](#)
- [8 Notification of Compliance](#)
- [9 Documents / Resources](#)
 - [9.1 References](#)

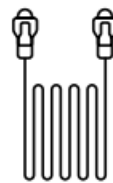
What's in the Box



Camera



Waterproof Lid



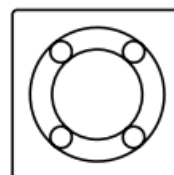
Ethernet Cable



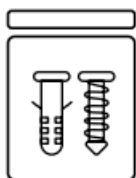
Quick Start Guide



Surveillance Sign

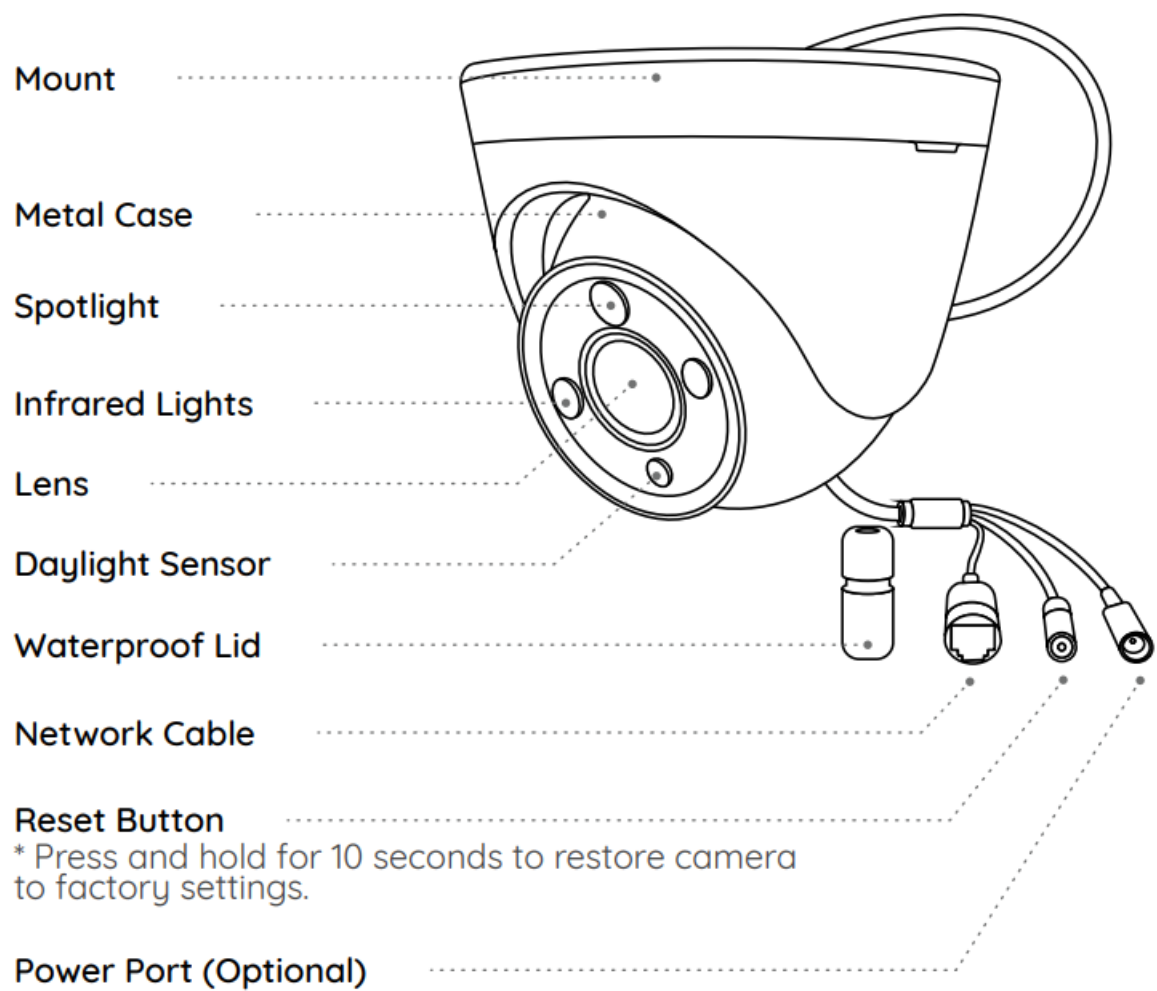


Mounting Hole
Template

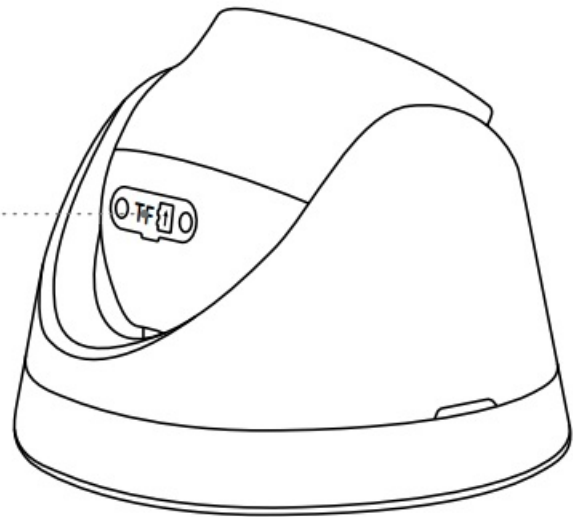


Pack of Screws

Camera Introduction

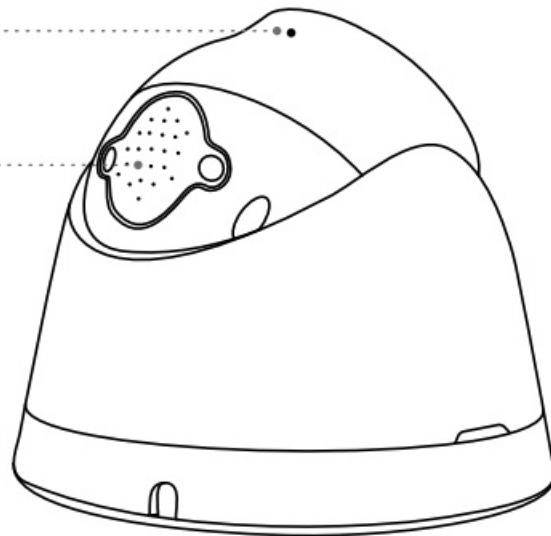


Micro SD Card Slot



Built-in Mic

Speaker

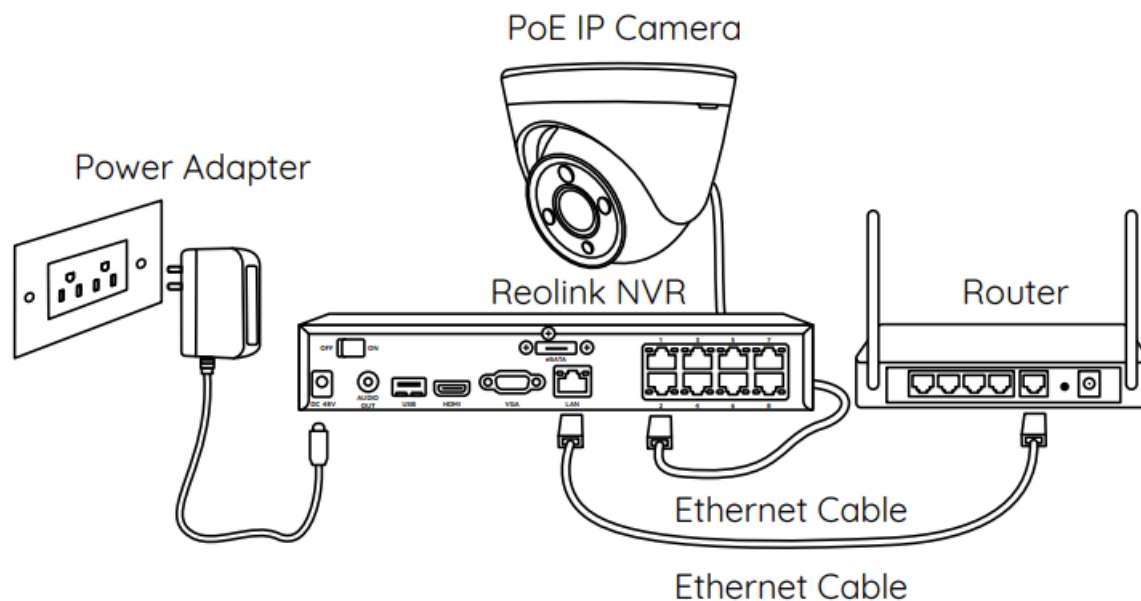


Connection Diagram

Before using the camera, please connect your camera as instructed below to finish initial setup.

1. Connect the camera to a Reolink NVR (not included) with an Ethernet cable.
2. Connect the NVR to your router, and then power on the NVR.

NOTE: The camera should be powered with a 12V DC adapter or a PoE powering device such as PoE injector, PoE switch or Reolink NVR (not included in the package).



* You may also connect the camera to a PoE switch or PoE injector.

Set up the Camera

Download and Launch the Reolink App or Client software, and follow the onscreen instructions to finish initial setup.

- On Smartphone
Scan to download the Reolink App.



<https://reolink.com/wp-json/reo-v2/app/download>

NOTE: If you are connecting the camera to a Reolink PoE NVR, please set up the camera via the NVR interface.

Mount the Camera

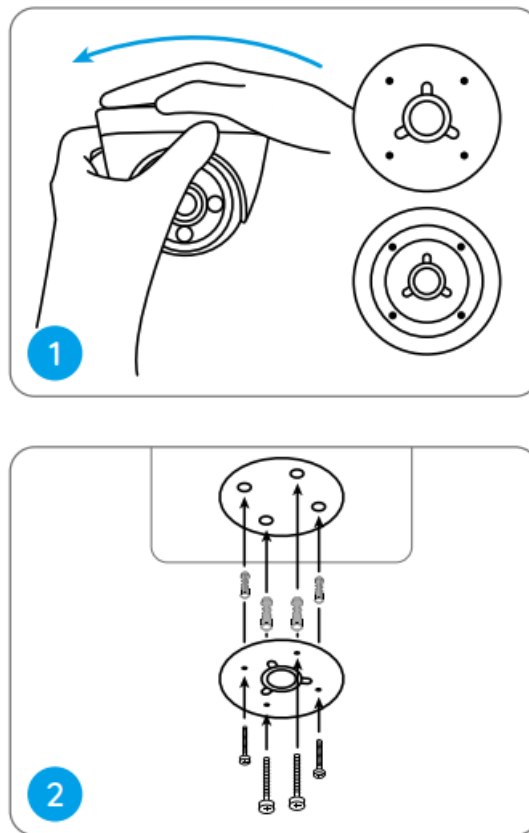
Installation Tips

- Do not face the camera towards any light sources.
- Do not point the camera towards a glass window. Or, it may result in poor image quality because of the window glare by spotlights, ambient lights or status lights.
- Do not place the camera in a shaded area and point it towards a well-lit area. Or, it may result in poor image quality. To ensure best image quality, the lighting condition for both the camera and the capture object shall be the same.

- To ensure better image quality, it's recommended to clean the lens with a soft cloth from time to time.
- Make sure the power ports are not directly exposed to water or moisture and not blocked by dirt or other elements.
- With IP waterproof ratings, the camera can work properly under conditions like rain and snow. However, it doesn't mean the camera can work underwater.
- Do not install the camera at places where rain and snow can hit the lens directly.
- The camera may work in extreme cold conditions as low as -25°C.
Because when it is powered on, the camera will produce heat. You may power on the camera indoors for a few minutes before installing it outdoors.

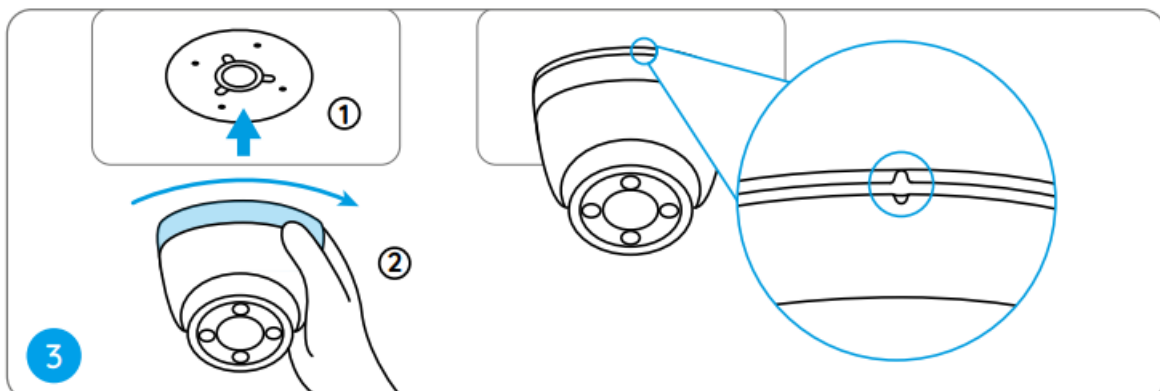
Install the Camera

Hold and press on the camera top and turn anticlockwise to separate mounting plate from the camera.



Drill holes according to the mounting hole template and screw the mounting plate to the mounting holes on the ceiling.

NOTE: Use the drywall anchors included in the package if needed.



Align the camera to the mounting plate and turn the camera clockwise to lock it tightly. Pay attention that these two points should be aligned, which means the camera has been locked correctly.

NOTE: Run the cable through the cable notch on the mount base.



Once the camera is installed, you may rotate the camera body manually to adjust the camera's surveillance angle.

Troubleshooting

Camera is not Powering on

If your camera is not powering on, please try the following solutions:

- Make sure your camera is powered properly. The PoE camera should be powered by a PoE switch/injector, the Reolink NVR or a 12V power adapter.
- If the camera is connected to a PoE device as listed above, connect the camera to another PoE port and see if the camera will power on.
- Try again with another Ethernet cable.

If these won't work, contact Reolink Support.

Picture is not Clear

If the picture from the camera is not clear, please try the following solutions:

- Check the camera lens for dirt, dust or spiderwebs, please clean the lens with a soft, clean cloth.
- Point the camera to a well-lit area, the lighting condition will affect the picture quality a lot.
- Upgrade the firmware of your camera to the latest version.

Spotlight is not on

If the spotlight on your camera is not on, please try the following solutions:

- Ensure the spotlight is enabled under Device Settings page via Reolink App/Client.
- Upgrade the firmware of your camera to the latest version.
- Restore the camera to factory settings and check out the spotlight settings again.

If these won't work, contact Reolink Support.

Specifications

Hardware Features

Power: By PoE(802.3af) /DC 12V
Day/Night Mode: Auto Switchover

General

Operating Temperature: -10°C to 55°C (14°F to 131°F)

Operating Humidity: 10%-90%

Waterproof Rating: IP66

For more specifications, visit the Reolink official website.

Notification of Compliance

FCC Compliance Statement

This device complies with Part 15 of the FCC Rules. Operation is subject to the following two conditions: (1) this device may not cause harmful interference, and (2) this device must accept any interference received, including interference that may cause undesired operation. Changes or modifications not expressly approved by the party responsible for compliance could void the user's authority to operate the equipment.

NOTE: This equipment has been tested and found to comply with the limits for a Class B digital device, pursuant to Part 15 of the FCC Rules. These limits are designed to provide reasonable protection against harmful interference in a residential installation. This equipment generates, uses and can radiate radio frequency energy and, if not installed and used in accordance with the instructions, may cause harmful interference to radio communications. However, there is no guarantee that interference will not occur in a particular installation.

If this equipment does cause harmful interference to radio or television reception, which can be determined by turning the equipment off and on, the user is encouraged to try to correct the interference by one or more of the following measures:

- Reorient or relocate the receiving antenna.
- Increase the separation between the equipment and receiver.
- Connect the equipment into an outlet on a circuit different from that to which the receiver is connected.
- Consult the dealer or an experienced radio/ TV technician for help.

FCC RF warning statement:

The device has been evaluated to meet general RF exposure requirement.

The device can be used in portable exposure condition without restriction.

Simplified EU Declaration of Conformity

Reolink declares that this device is in compliance with the essential requirements and other relevant provisions of Directive 2014/53/EU.

Correct Disposal of This Product

This marking indicates that this product should not be disposed with other household wastes throughout the EU. To prevent possible harm to the environment or human health from uncontrolled waste disposal, recycle it responsibly to promote the sustainable reuse of material resources. To return your used device, please use the return and collection systems or contact the retailer where the product was purchased. They can take this product for environment safe recycling.

Limited Warranty

This product comes with a 2-year limited warranty that is valid only if purchased from Reolink Official Store or a Reolink authorized reseller.

NOTE: We hope that you enjoy the new purchase. But if you are not satisfied with the product and plan to return, we strongly suggest that you reset the camera to factory default settings and take out the inserted SD card before returning.

Terms and Privacy

Use of the product is subject to your agreement to the Terms of Service and Privacy Policy. Keep out of reach of children.


End User License Agreement

By using the Product Software that is embedded on the Reolink product, you agree to the terms of this End User License Agreement ("EULA") between you and Reolink.

ISED Radiation Exposure Statement

This equipment complies with RSS-102 radiation exposure limits set forth for an uncontrolled environment.
This equipment should be installed and operated with minimum distance 20cm between the radiator & your body.

Documents / Resources

	reolink RLC-833A 4K Security Camera [pdf] Instruction Manual RLC-833A, RLC-833A 4K Security Camera, 4K Security Camera, Security Camera, Camera
---	--

References

- [User Manual](#)