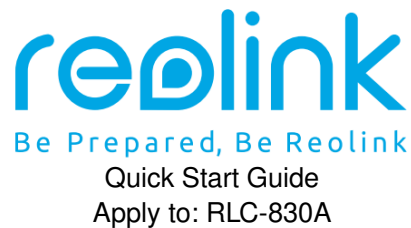




reolink RLC-830A 4K PoE Security Camera User Guide

[Home](#) » [reolink](#) » reolink RLC-830A 4K PoE Security Camera User Guide 



Contents

- 1 What's in the Box
- 2 Camera Introduction
- 3 Connection Diagram
- 4 Set UP the Camera
- 5 Mount the Camera
- 6 Troubleshooting
- 7 Specification
- 8 Notification of Compliance
- 9 Documents / Resources
 - 9.1 References

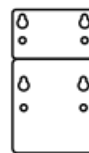
What's in the Box



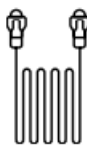
Camera



Waterproof Lid



Mounting Hole
Template



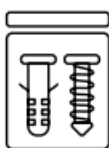
1m
Ethernet Cable



Quick Start Guide

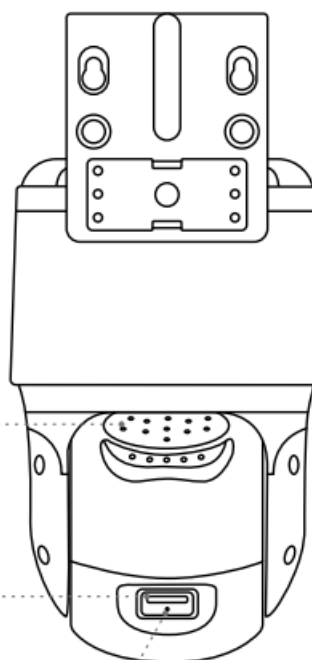


Surveillance Sign



Pack of Screws

Camera Introduction

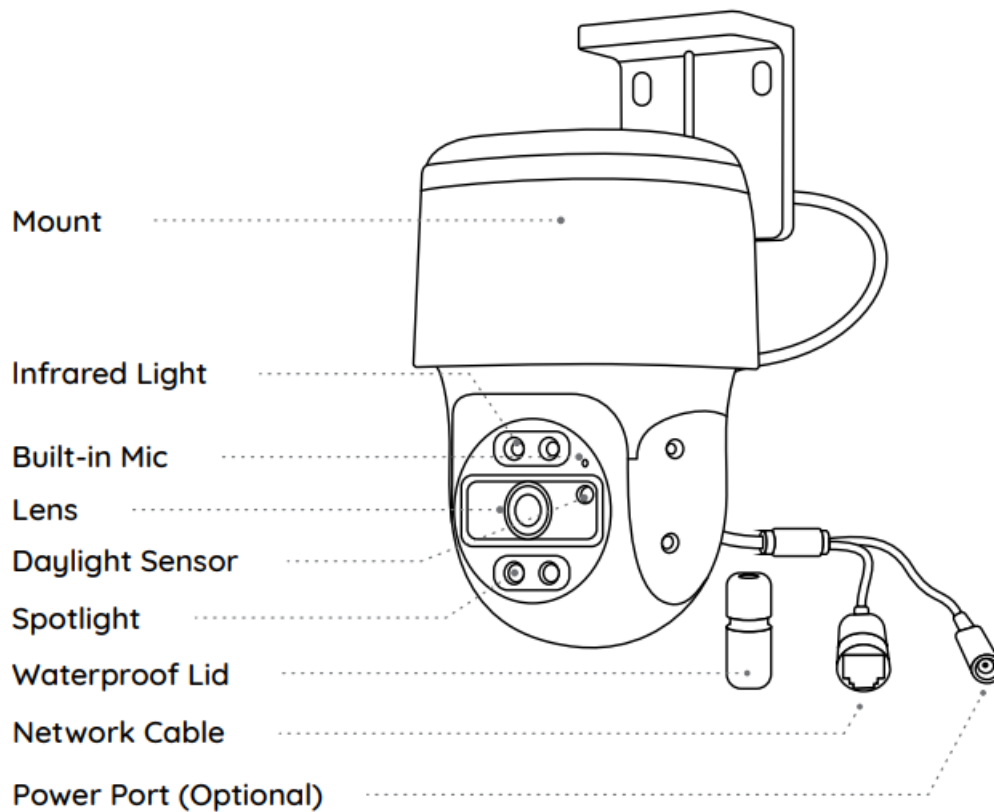


Speaker

SD Card Slot

Reset Button

* Press for about 10 seconds to restore the device to factory settings.

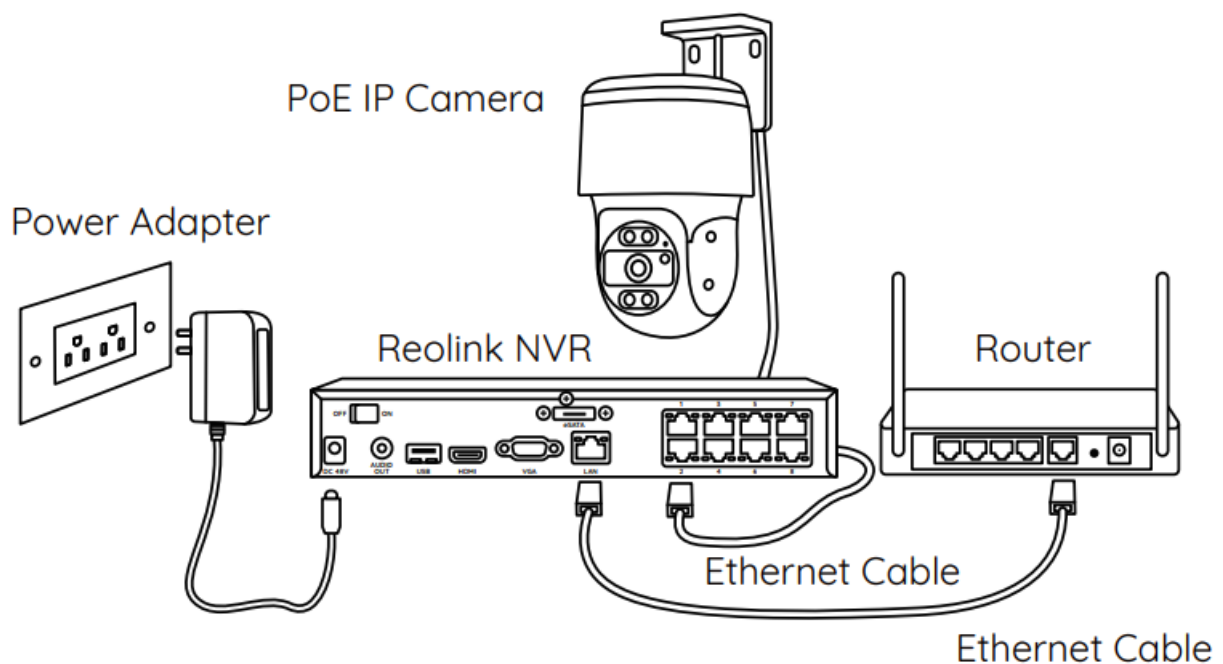


Connection Diagram

Before using the camera, please connect your camera as instructed below to finish initial setup.

1. Connect the camera to a Reolink NVR (not included) with an Ethernet cable.
2. Connect the NVR to your router, and then power on the NVR.

NOTE: The camera should be powered with a 12V DC adapter or a PoE powering device such as PoE injector, PoE switch or Reolink NVR (not included in the package).



Set UP the Camera

Download and launch the Reolink App or Client software, and follow the onscreen instructions to finish initial setup.

- **On Smartphone**

Scan to download the Reolink App.



NOTE:

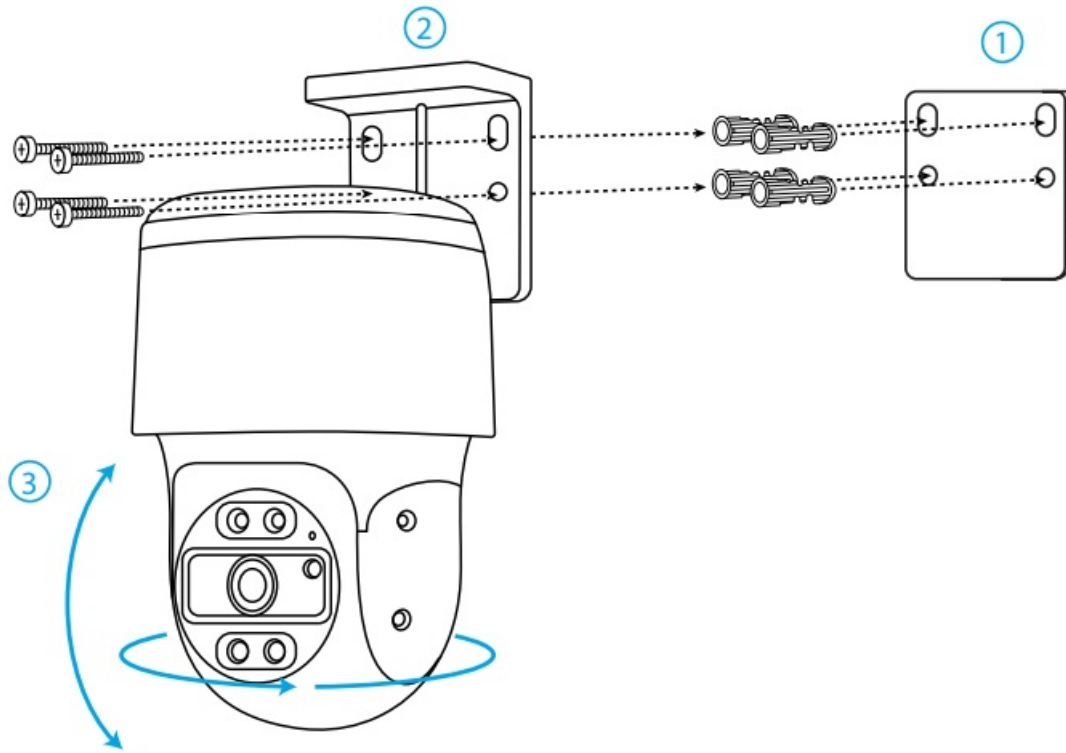
- If you are connecting the PoE camera to a Reolink PoE NVR, please set up the camera via the NVR interface.

Mount the Camera

Installation Tips

- Do not face the camera towards any light sources.
- Do not point the camera towards a glass window. Otherwise, it may result in poor image quality because of the window glare caused by infrared LEDs, ambient lights or status lights.
- Do not place the camera in a shaded area and point it towards a well-lit area. Otherwise, it may result in poor image quality. To ensure best image quality, the lighting condition for both the camera and the capture object should be the same.
- Make sure the power ports are not directly exposed to water or moisture and not blocked by dirt or other elements.
- The waterproof camera can work properly under conditions like rain and snow. However, it doesn't mean the camera can work underwater.
- Do not install the camera at places where rain and snow can hit the lens directly.

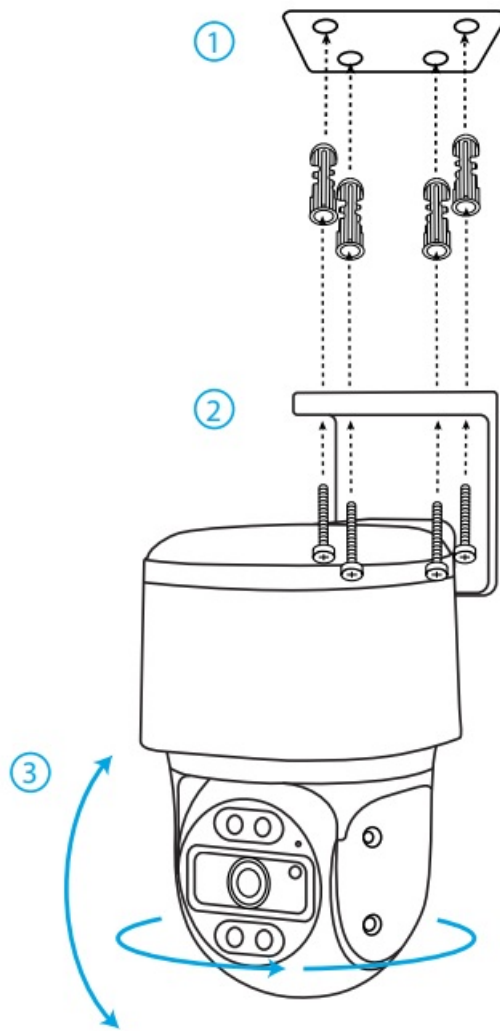
Mount the camera to the wall



1. Drill holes in accordance with the mounting hole template.
2. Install the mount base with screws included in the package.
3. To adjust the camera direction, you may control the camera to pan and tilt via Reolink App or Client.

NOTE: Use the drywall anchors included in the package if needed.

Mount the Camera to Ceiling



1. Drill holes in accordance with the mounting hole template.
2. Install the mount base with screws included in the package.
3. To adjust the camera direction, you may control the camera to pan and tilt via Reolink App or Client.

NOTE: Use the drywall anchors included in the package if needed.

Troubleshooting

Camera is not powering on

If your camera is not powering on, please try the following solutions:

- Make sure your camera is powered on properly. The PoE camera should be powered by a PoE switch/injector, a Reolink NVR or a 12V power adapter.
- If the camera is connected to a PoE device as listed above, connect it to another PoE port and check again.
- Try again with another Ethernet cable.

Picture is not clear

If the picture from the camera is not clear, please try the following solutions:

- Check the camera lens for dirt, dust or spiderwebs. Please clean with a soft, clean cloth.
- Point the camera to a well-lit area. The lighting condition will affect the picture quality a lot.
- Upgrade the firmware of your camera to the latest version.

- Restore the camera to factory settings and check it again.

Specification

Hardware Features

Infrared Night Vision: 15 Meters

Day/Night Mode: Auto switchover

General

Dimension: 248 x 110x 147mm

Weight: 1.21KG

Operating Temperature: -10°C~+55°C (14°F~131°F)

Operating Humidity: 10%~90%

Notification of Compliance

FCC Compliance Statement

This device complies with Part 15 of the FCC Rules. Operation is subject to the following two conditions:(1) this device may not cause harmful interference, and (2) this device must accept any interference received, including interference that may cause undesired operation.

NOTE: This equipment has been tested and found to comply with the limits for a Class B digital device, pursuant to part 15 of the FCC Rules.

These limits are designed to provide reasonable protection against harmful interference in a residential installation. This equipment generates uses and can radiate radio frequency energy and, if not installed and used in accordance with the instructions, may cause harmful interference to radio communications. However, there is no guarantee that interference will not occur in a particular installation. If this equipment does cause harmful interference to radio or television reception, which can be determined by turning the equipment off and on, the user is encouraged to try to correct the interference by one or more of the following measures:

- Reorient or relocate the receiving antenna.
- Increase the separation between the equipment and receiver.
- Connect the equipment into an outlet on a circuit different from that to which the receiver is connected.
- Consult the dealer or an experienced radio/TV technician for help.

Caution: Changes or modifications not expressly approved by the party responsible for compliance could void the user's authority to operate the equipment.

ISED Compliance Statements

This Class B digital apparatus complies with Canadian ICES-003.

Simplified EU Declaration of Conformity

Reolink declares that this device is in compliance with the essential requirements and other relevant provisions of EMC Directive 2014/30/EU and LVD 2014/35/EU.

Reolink declares that this product is in compliance with Electromagnetic Compatibility Regulations 2016 and Electrical Equipment Safety Regulations 2016.

UKCA Declaration of Conformity



Correct Disposal of This Product

This marking indicates that this product should not be disposed with other household wastes. throughout the EU. To prevent possible harm to the environment or human health from uncontrolled waste disposal, recycle it responsibly to promote the sustainable reuse of material resources. To return your used device, please use the return and collection systems or contact the retailer where the product was purchased. They can take this product for environmentally safe recycling.

Limited Warranty

This product comes with a 2-year limited warranty that is valid only if purchased from Reolink Official Store or a

Reolink authorized reseller.

NOTE: We hope that you enjoy the new purchase. But if you are not satisfied with the product and plan to return, we strongly suggest that you reset the camera to factory default settings before returning.

Terms and Privacy

Use of the product is subject to your agreement to the Terms of Service and Privacy Policy
Keep out of reach of children.


End User License Agreement

By using the Product Software that is embedded on the Reolink product, you agree to the terms of this End User License Agreement (“EULA”) between you and Reolink.

Technical Support

If you need any technical help, please visit our official support site and contact our support team before returning the products.

Documents / Resources

| | |
|---|---|
|  | reolink RLC-830A 4K PoE Security Camera [pdf] User Guide RLC-830A, RLC-830A 4K PoE Security Camera, 4K PoE Security Camera, PoE Security Came ra, Security Camera, Camera |
|---|---|

References

- [User Manual](#)