

reolink RLC-823S1W WiFi IP Camera



reolink RLC-823S1W WiFi IP Camera User Guide

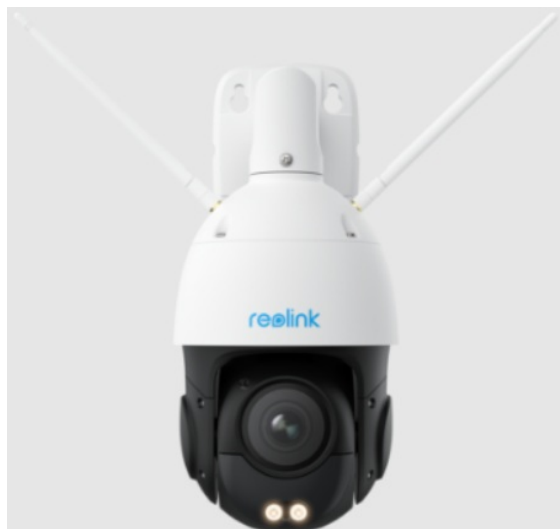
[Home](#) » [reolink](#) » reolink RLC-823S1W WiFi IP Camera User Guide 

Contents

- [1 reolink RLC-823S1W WiFi IP Camera](#)
- [2 Product Usage Instructions](#)
- [3 What's in the Box](#)
- [4 Camera Introduction](#)
- [5 Connection Diagram](#)
- [6 Mount the Camera](#)
- [7 Install the Camera](#)
- [8 Ceiling Mounting](#)
- [9 Troubleshooting](#)
- [10 FCC Compliance Statement](#)
- [11 Documents / Resources](#)
 - [11.1 References](#)
- [12 Related Posts](#)



reolink RLC-823S1W WiFi IP Camera



Specifications

- Item No.: W840
- Model: RLC-823S1W
- Dimensions: (specific dimensions if available)
- Weight: (specific weight if available)
- Power Source: Power Adapter
- Connectivity: Ethernet, Wi-Fi
- Storage: microSD Card Slot
- Features: Daylight Sensor, Microphone, IR LEDs, Spotlight

Product Usage Instructions

Connection Setup

Before initial setup, follow these steps:

1. Connect the camera to a LAN port on your router using the Ethernet cable.
2. Power on the camera using the provided power adapter.

Camera Setup

To set up the camera:

1. Download and launch the Reolink App or Client software.
2. Follow the onscreen instructions to complete the initial setup process.

Mounting Instructions

Wall Mounting

1. Install the antennas to the camera.
2. Connect the wire rope anchor between the camera and the bracket.
3. Place the mounting template on the wall and drill holes accordingly.
4. Secure the bracket by installing screws into the holes.

Ceiling Mounting

1. Attach the antennas to the camera.
2. Loosen the bracket screws and swivel it to be vertical to the ceiling.
3. Connect the wire rope anchor between the camera and the bracket.
4. Drill holes in the ceiling, insert drywall anchors, and secure the bracket with screws.

Troubleshooting

If you encounter issues:

- If the camera is not powering on, try contacting Reolink Support.
- If Infrared LEDs stop working or picture quality is poor, refer to support for assistance.

FAQ

Camera is not Powering on

If your camera is not powering on, please try the following solutions:

1. Check power connections.
2. Ensure power source is functioning.

Infrared LEDs Stop Working

If the Infrared LEDs of your camera stop working, please try the following solutions:

1. Restart the camera.
2. Check for any obstructions in front of the camera lens.

Picture is not Clear

If the picture from the camera is not clear, please try the following solutions:

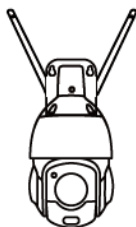
1. Clean the camera lens.
2. Adjust camera settings for better clarity.



@Reolink Tech

<https://reolink.com>

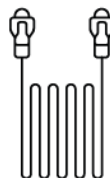
What's in the Box



Camera



Waterproof
Lid



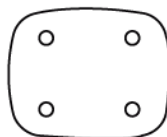
Ethernet Cable



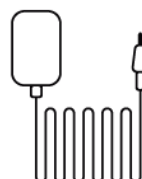
Quick Start
Guide



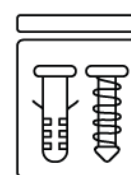
Surveillance
Sticker



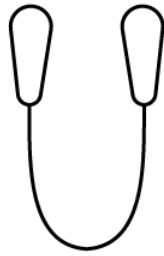
Mounting
Template



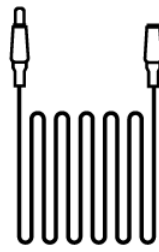
Power Adapter



Pack of
Screws

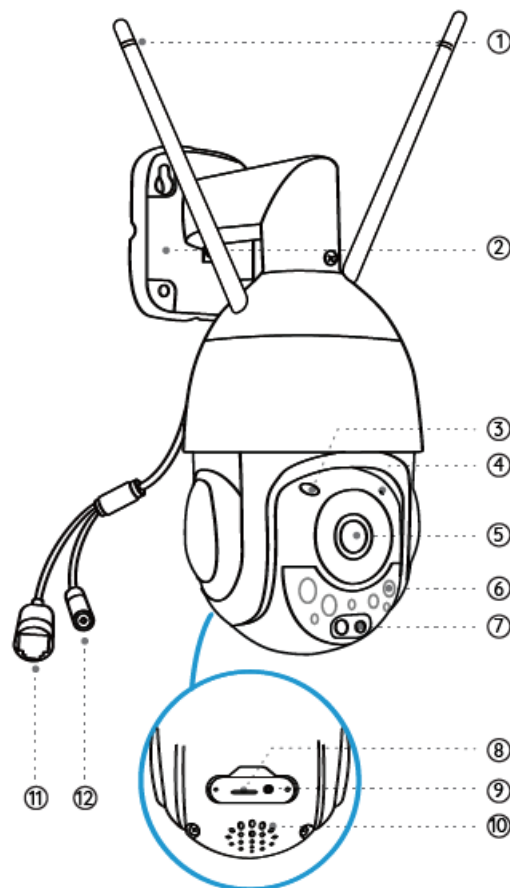


Wire Rope
Anchor



4.5m Power
Extension Cable

Camera Introduction



1. Antenna
2. Bracket
3. Daylight Sensor
4. Microphone
5. Lens
6. IR LEDs
7. Spotlight
8. microSD Card Slot
9. Reset Button
10. Speaker
11. LAN Port
12. Power Port

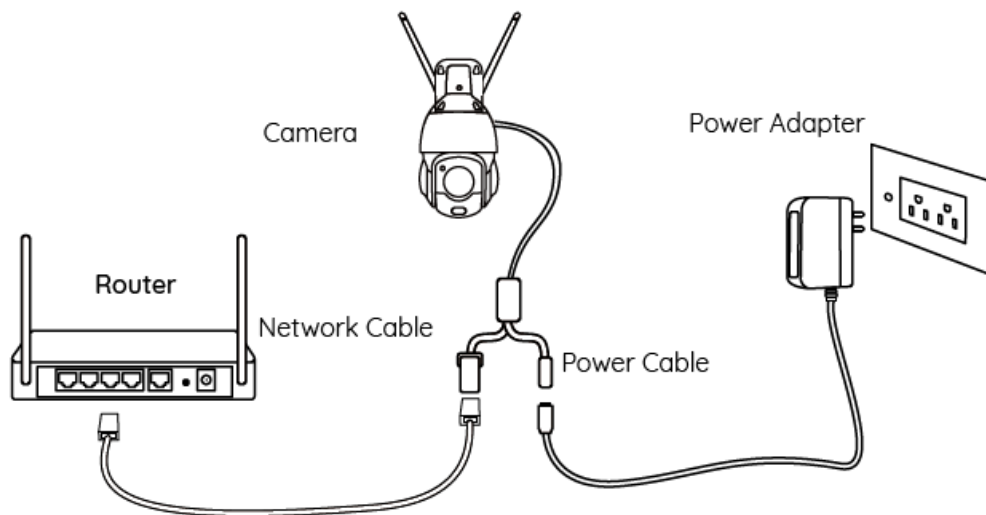
Connection Diagram

Before initial setup, follow the steps below to connect your camera.

1. Connect the camera to a LAN port on your router with an Ethernet cable.
2. Use the power adapter to power on the camera.

NOTE:

Ensure that the antennas are installed before connecting the camera.



Set up the Camera

Download and launch the Reolink App or Client software, and follow the onscreen instructions to finish initial setup.

On Smartphone

Scan to download the Reolink App.



On PC

Download path of the Reolink Client: Go to <https://reolink.com> > Support > App & Client.

NOTE:

- When setting up the Wi-Fi camera, you need to follow the onscreen instructions to finish the Wi-Fi configuration first.
- Once the camera successfully connects to the Wi-Fi network, you can disconnect the Ethernet cable. The camera will now operate wirelessly.

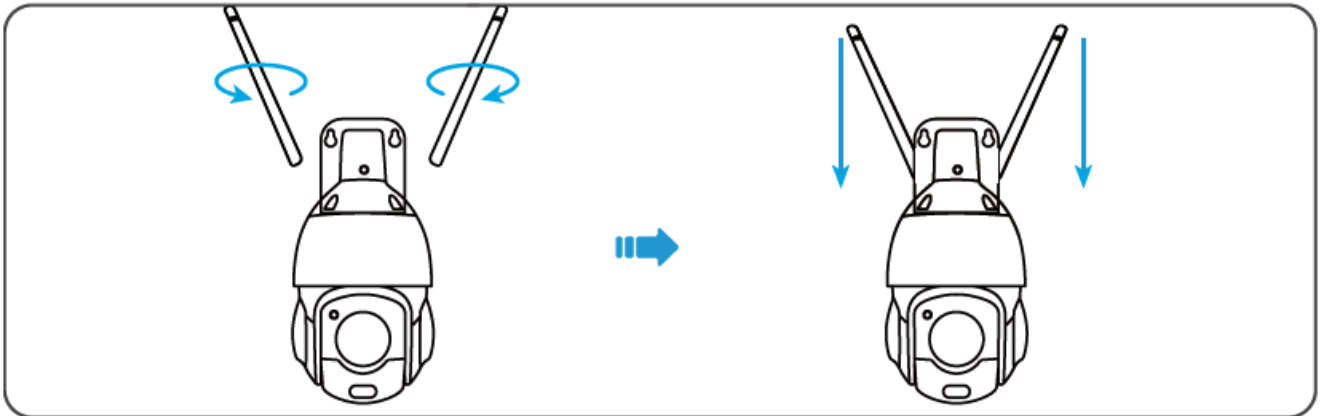
Mount the Camera

Installation Tips

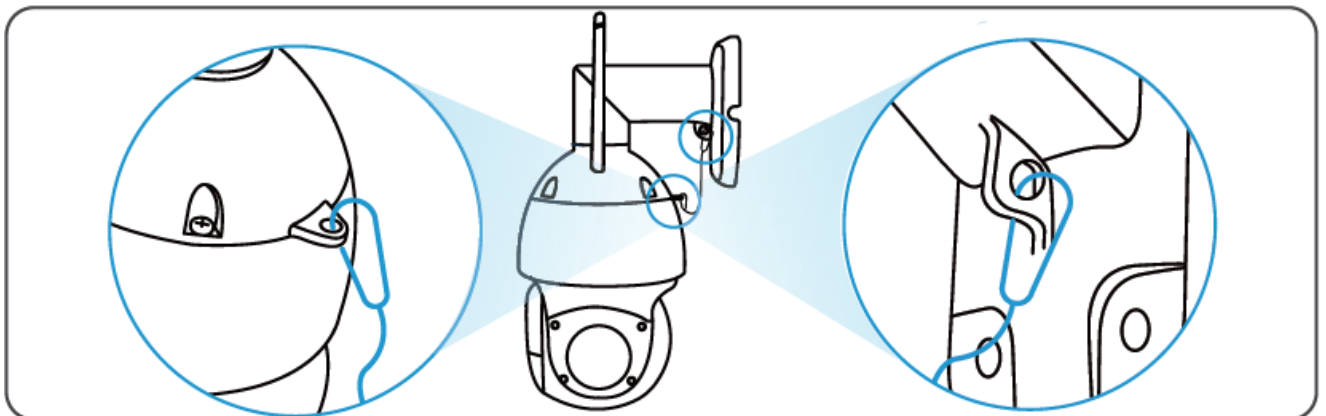
- Do not face the camera towards any light sources.
- Do not point the camera towards a glass window. Or, it may result in poor image quality because of the window glare by infrared LEDs, ambient lights or status lights.
- Do not place the camera in a shaded area and point it towards a well-lit area. Or, it may result in poor image quality. To ensure the best image quality, the lighting condition for both the camera and the capture object shall be the same.
- To ensure better image quality, it's recommended to clean the dome cover with a soft cloth from time to time.
- Make sure the power ports are not directly exposed to water or moisture and not blocked by dirt or other elements.
- With IP waterproof ratings, the camera can work properly under conditions like rain and snow. However, it doesn't mean the camera can work underwater.
- Do not install the camera at places where rain and snow can hit the lens directly.

Install the Camera

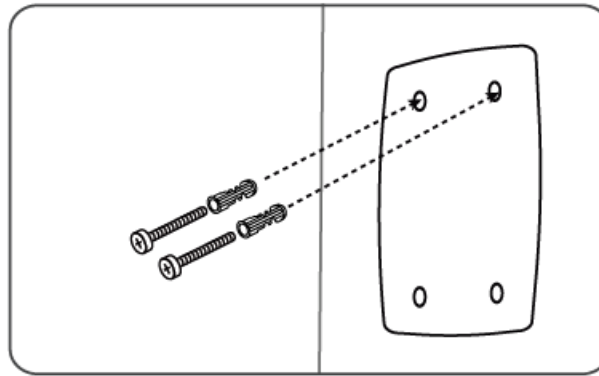
Wall Mounting



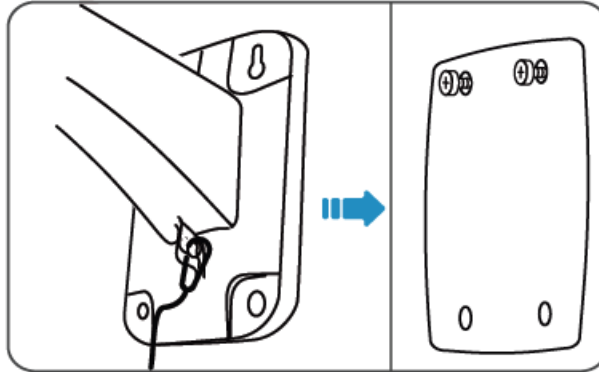
1. Install the antennas to the camera.



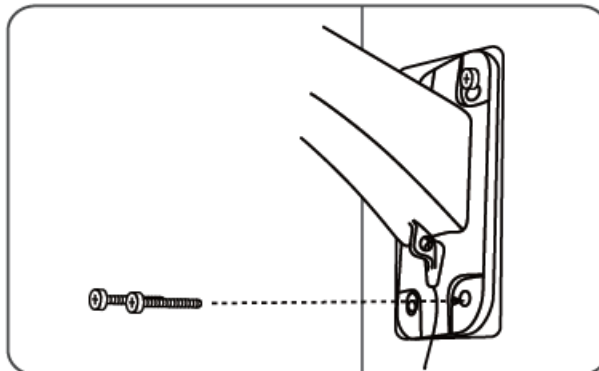
2. Connect the wire rope anchor between the camera and the bracket.



3. Put the mounting template on the desired position of the wall and drill holes accordingly

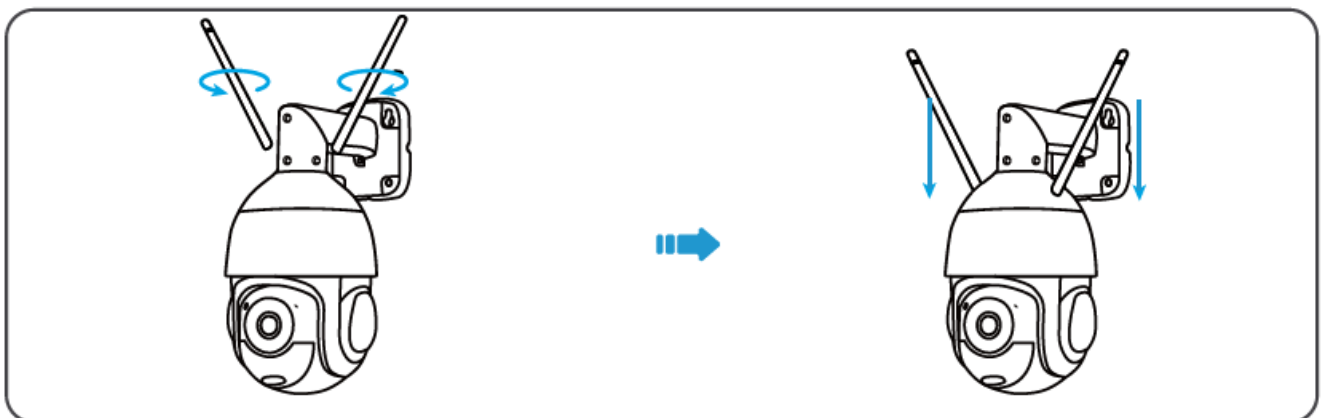


4. Install two screws into the upper two holes and hang the bracket over them.

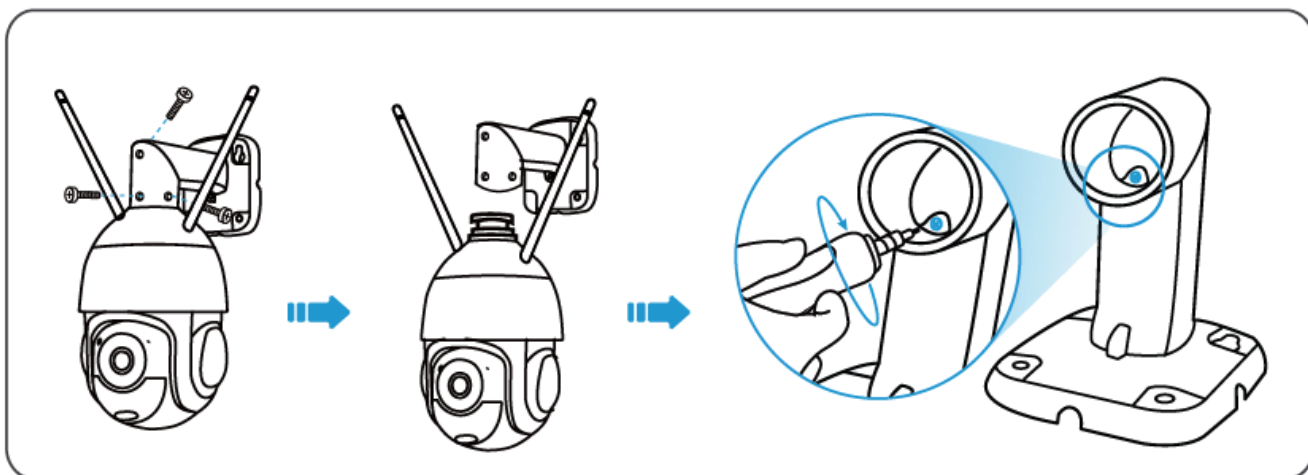


5. Install another two screws into the lower two holes to secure the bracket.

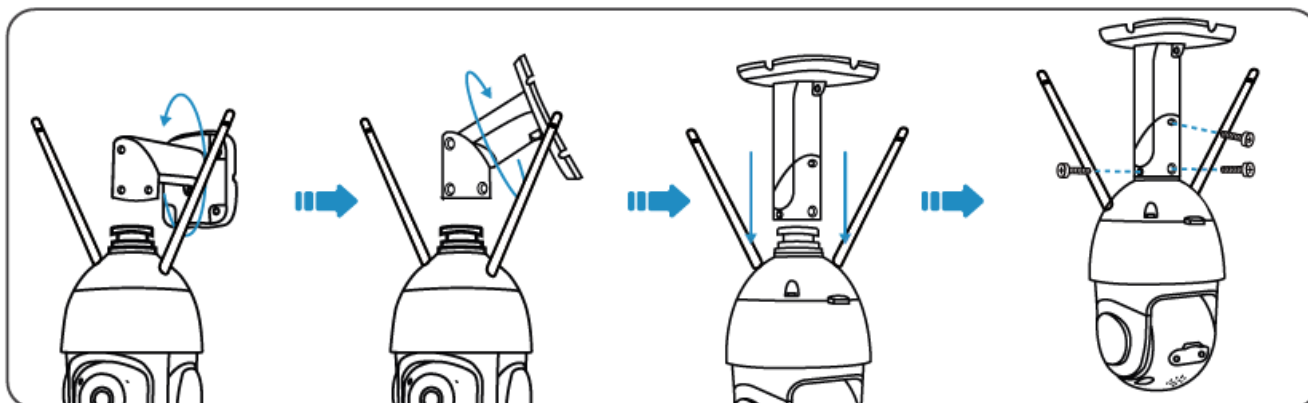
Ceiling Mounting



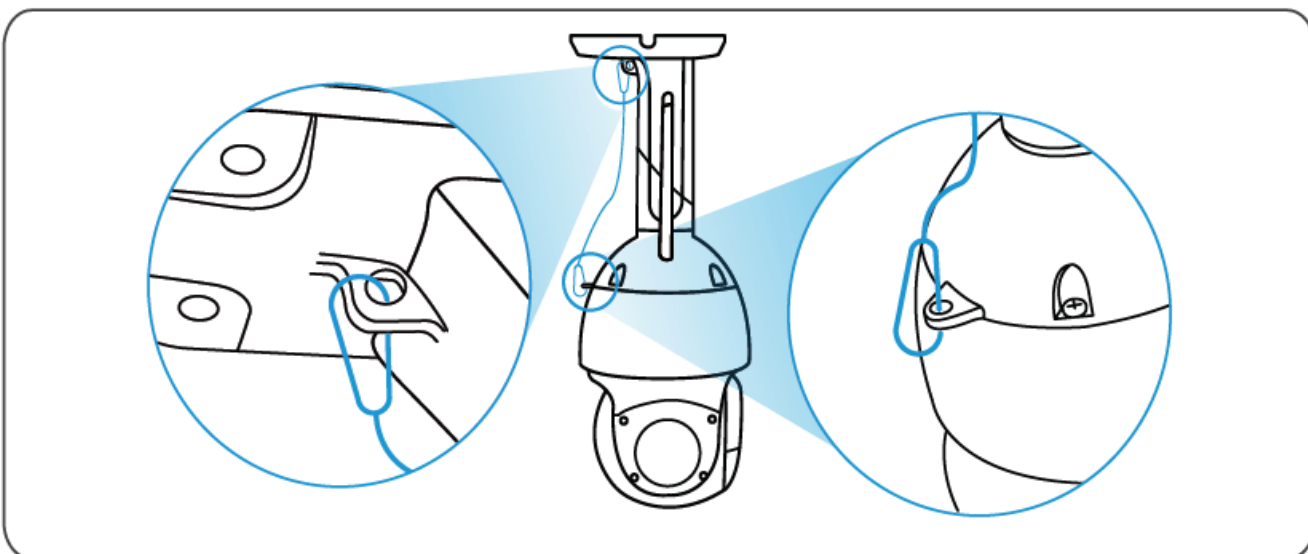
1. Install the antennas to the camera.



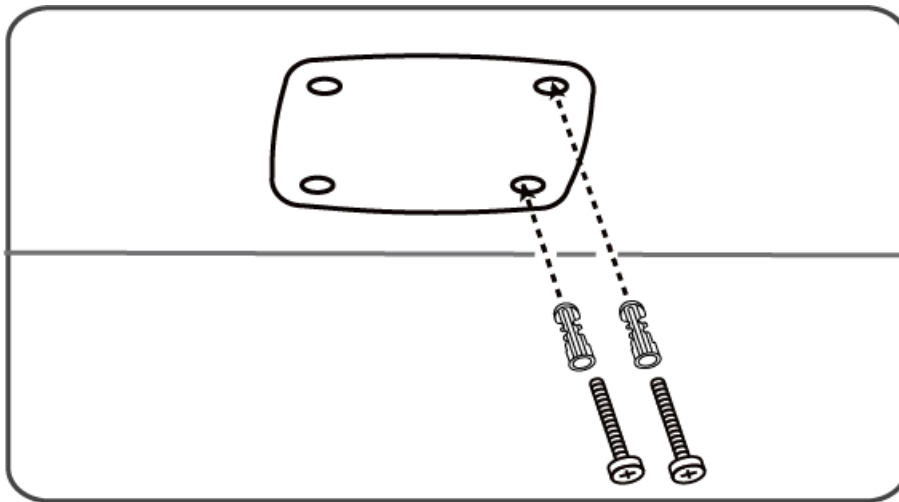
2. Loosen the screws to detach the camera from the bracket.



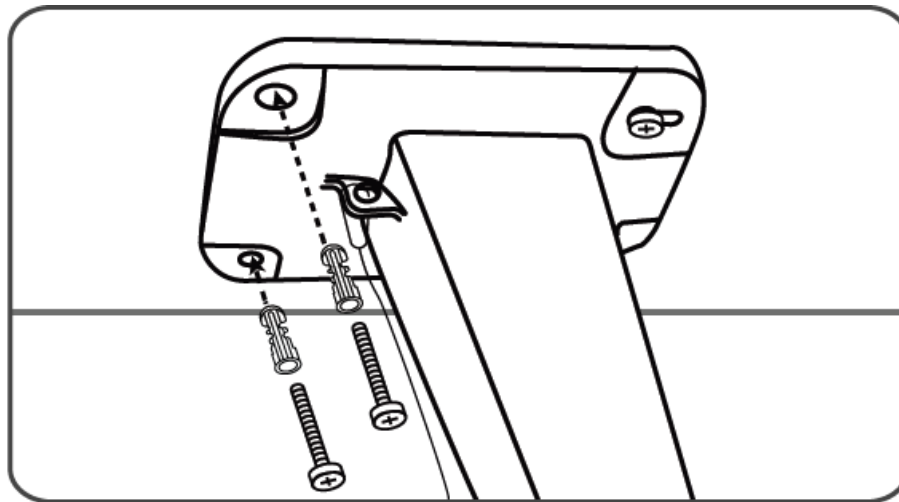
3. Loosen the two screws from the internal and external of the bracket, and swivel it so that it is vertical to the ceiling. Then tighten the screws on the bracket.



4. Connect the wire rope anchor between the camera and the bracket.



5. Put the mounting template on the desired position of the ceiling and drill holes accordingly, then insert the drywall anchors.



6. Secure the bracket base to the mounting surface with screws.

Troubleshooting

Camera is not Powering on

If your camera is not powering on, please try the following solutions:

- Please check whether the outlet is working properly or not. Try to plug the camera into a different outlet and see if it works.
- Please check whether the DC adapter is working or not. If you have an-other 12V DC power adapter which is working, please use another power adapter and see if it works.

If these won't work, contact Reolink Support at <https://support.reolink.com/>.

Infrared LEDs Stop Working

If the Infrared LEDs of your camera stop working, please try the following solutions:

- Enable infrared lights on Device Settings page via Reolink App/Client.
- Check if the Day/Night mode is enabled and set up auto infrared lights at night on Live View page via Reolink App/Client.
- Upgrade the firmware of your camera to the latest version.
- Restore the camera to factory settings and check out the infrared light settings again.

If these won't work, contact Reolink Support at <https://support.reolink.com/>.

Picture is not Clear

If the picture from the camera is not clear, please try the following solutions:

- Check the camera dome cover for dirt, dust or spiderwebs, and clean the dome cover with a soft, clean cloth. The dust-absorber included in the package is recommended.
- Point the camera to a well-lit area, as the lighting condition will affect the picture quality a lot.
- Upgrade the firmware of your camera to the latest version.
- Restore the camera to factory settings and check out again.

Specification

- **Dimension:** 373*177*140mm(Ceiling Mount)
- **Weight:** 2.34kg
- **Operating Temperature:** -10°C~+55°C (14°F~131°F)
- **Operating Humidity:** 10%-90%

For more Specifications, visit <https://reolink.com/>.

Notification of Compliance

FCC Compliance Statement

This device complies with Part 15 of the FCC Rules. Operation is subject to the following two conditions:

1. This device may not cause harmful interference, and
2. This device must accept any interference received, including interference that may cause undesired operation.

Note:

This equipment has been tested and found to comply with the limits for a Class B digital device, pursuant to Part 15 of the FCC Rules. These limits are designed to provide reasonable protection against harmful interference in a residential installation. This equipment generates, uses and can radiate radio frequency energy and, if not installed and used in accordance with the instructions, may cause harmful interference to radio communications. However, there is no guarantee that interference will not occur in a particular installation. If this equipment does cause harmful interference to radio or television reception, which can be determined by turning the equipment off and on, the user is encouraged to try to correct the interference by one or more of the following measures:

- Reorient or relocate the receiving antenna.
- Increase the separation between the equipment and receiver.
- Connect the equipment into an outlet on a circuit different from that to which the receiver is connected.
- Consult the dealer or an experienced radio/TV technician for help.

Caution: Changes or modifications not expressly approved by the party responsible for compliance could void the user's authority to operate the equipment.

FCC Radiation Exposure statement

This equipment complies with FCC radiation exposure limits set forth for an uncontrolled environment. This

equipment should be installed and operated with minimum distance 20cm between the radiator and your body.

ISED Compliance Statements

This device contains license-exempt transmitter(s)/receiver(s) that comply with Innovation, Science and Economic Development Canada's license-exempt RSS(s). Operation is subject to the following two conditions:


1. This device may not cause interference.
2. This device must accept any interference, including interference that may cause undesired operation of the device.

ISED Radiation Exposure statement

This equipment complies with IC RSS-102 radiation exposure limits set forth for an uncontrolled environment. This equipment should be installed and operated with minimum distance 20 cm between the radiator and your body. Operation of 5150-5250 MHz is restricted to indoor use only. The radio transmitter IC: 26839-2310C has been approved by Innovation, Science and Economic Development Canada to use the following antenna types with a specified maximum allowable gain. Antenna types not included in this list whose gain is higher than the maximum gain of any of the listed types are strictly prohibited from use with this device.

- Type of antenna External antenna
- Antenna Gain 2400-2500(2.89dBi) 5150-5850(2.55d Bi)
- Impedance 50 ohm
- Manufacture Shenzhen Be-Comfortable Technology. Ltd

Documents / Resources

	reolink RLC-823S1W WiFi IP Camera [pdf] User Guide 2310C, 2AYHE-2310C, 2AYHE2310C, RLC-823S1W, RLC-823S1W WiFi IP Camera, WiFi IP Camera, IP Camera, Camera
---	--

References

- [Reolink Official: Security Cameras and Systems for Home & Business](#)
- [Reolink Support - Official Reolink Help Center](#)
- [User Manual](#)

Manuals+, Privacy Policy

This website is an independent publication and is neither affiliated with nor endorsed by any of the trademark owners. The "Bluetooth®" word mark and logos are registered trademarks owned by Bluetooth SIG, Inc. The "Wi-Fi®" word mark and logos are registered trademarks owned by the Wi-Fi Alliance. Any use of these marks on this website does not imply any affiliation with or endorsement.