



reolink RLC-811WA 4K 8MP Dual Band WiFi IP Camera Instruction Manual

[Home](#) » [reolink](#) » reolink RLC-811WA 4K 8MP Dual Band WiFi IP Camera Instruction Manual 

Contents

- 1 [reolink RLC-811WA 4K 8MP Dual Band WiFi IP Camera](#)
- 2 [Product Information](#)
- 3 [What's in the Box](#)
- 4 [Connection Diagram](#)
- 5 [Troubleshooting](#)
- 6 [Camera Introduction](#)
- 7 [Set up the Camera](#)
- 8 [Mount the Camera](#)
- 9 [Install the Camera](#)
- 10 [Troubleshooting](#)
- 11 [Specifications General](#)
- 12 [Notification of Compliance](#)
- 13 [Documents / Resources](#)
 - 13.1 [References](#)
- 14 [Related Posts](#)



reolink RLC-811WA 4K 8MP Dual Band WiFi IP Camera



Product Information

- **Product Name:** RLC-811WA
- **Manufacturer:** Reolink Innovation Limited
- **Model Number:** RLC-811WA
- **Product Description:** The RLC-811WA is a WiFi IP camera with a metal aluminum case, high-definition lens, built-in microphone and speaker, infrared LEDs, and a spotlight. It also features a microSD card slot for local storage, a network port for connection to a router, and a reset button for restoring factory settings

What's in the Box

- Camera
- Antenna
- Power Adapter
- 1m Network Cable
- 4.5m Power Extension Cable
- Mounting Template
- Pack of Screws
- Surveillance Sign
- Quick Start Guide

Connection Diagram

Before initial setup, follow the steps below to connect your camera:

1. Connect the camera to a LAN port on your router with an Ethernet cable.
2. Power on the camera with a power adapter.

Troubleshooting

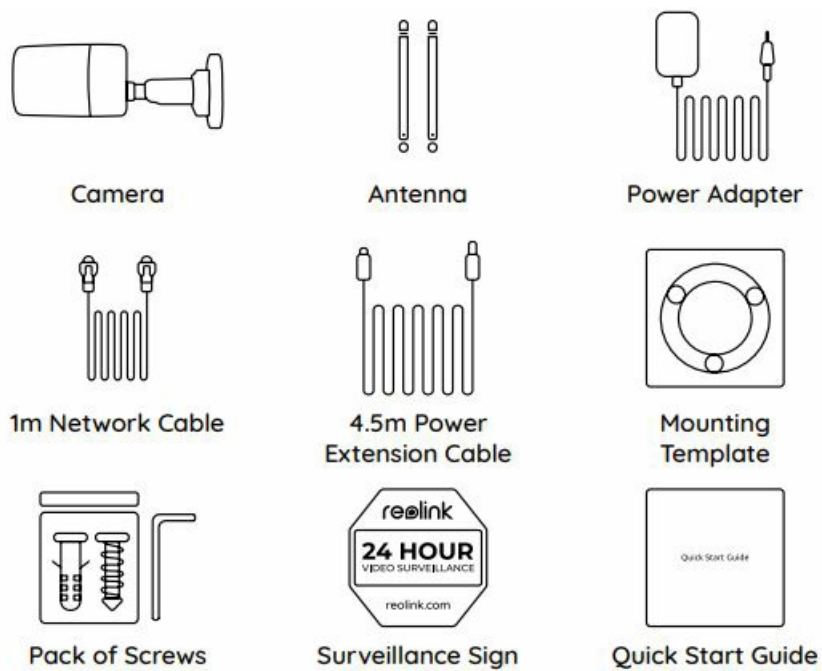
If you find your camera is not powering on, try the following solutions:

1. Check if the power adapter is properly connected.
2. Make sure the power source is working.
3. If the camera still doesn't power on, contact Reolink Support [here](#).

Technical Support

If you need any technical help, please visit our official support site and contact our support team before returning

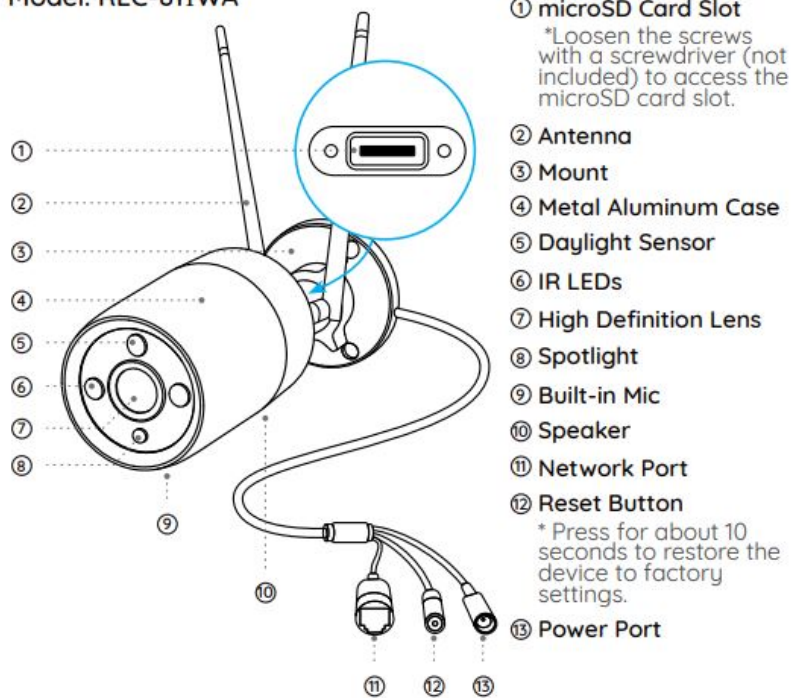
the products,
<https://support.reolink.com>.



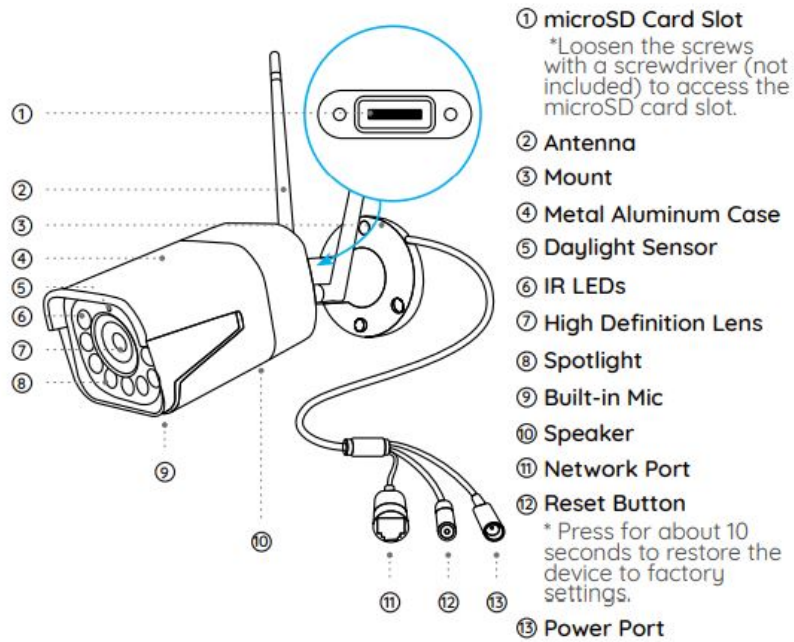
NOTE: Camera and accessories vary with different camera models that you purchase.

Camera Introduction

Model: RLC-811WA



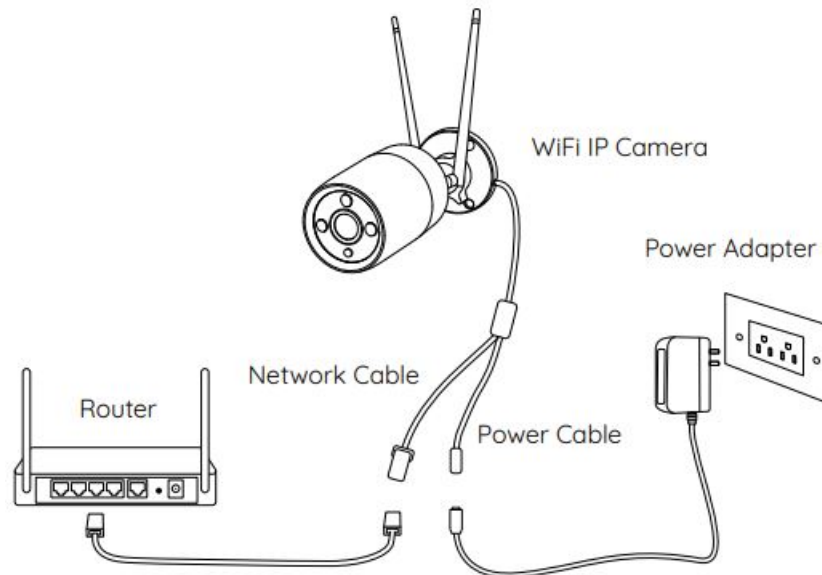
Model: RLC-811WA



Connection Diagram

Before initial setup, follow the steps below to connect your camera.

1. Connect the camera to a LAN port on your router with an Ethernet cable.
2. Power on the camera with a power adapter.



Set up the Camera

- Download and Launch the Relink App or Client software, and follow the onscreen instructions to finish initial setup.
- **NOTE:** You can now use WiFi instead of the Ethernet cable for network connection. On Smartphone Scan to download the Relink App.



- On PC Download path of the Relink Client: Go to <https://reolink.com> > Support App & Client.
- **NOTE:** If you are connecting the camera to a Relink PoE NVR, please set up the camera via the NVR interface.

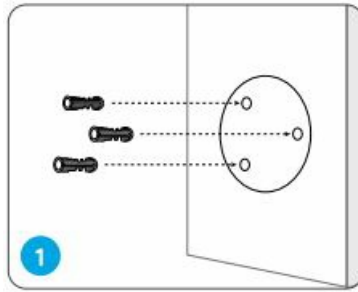
Mount the Camera

Installation Tips

- Do not face the camera towards any light sources.
- Do not point the camera towards a glass window. Or, it may result in poor image quality because of the window glare by infrared LEDs, ambient lights or status lights.
- Do not place the camera in a shaded area and point it towards a well-lit area. Or, it may result in poor image quality. To ensure best image quality, the lighting condition for both the camera and the capture object shall be the same.
- To ensure better image quality, it's recommended to clean the lens with a soft cloth from time to time.
- Make sure the power ports are not directly exposed to water or moisture and not blocked by dirt or other elements. With IP waterproof ratings, the camera can work properly under conditions like rain and snow. However, it doesn't mean the camera can work underwater.
- Do not install the camera at places where rain and snow can hit the lens directly.
- The camera may work in extreme cold conditions as low as -10°C.
- Because when it is powered on, the camera will produce heat. You may power on the camera indoors for a few minutes before installing it outdoors.
- **NOTE:** There are two different types of mounts for bullet cameras.
- Please check out the mount included in the package and follow the corresponding instruction to install the camera properly.

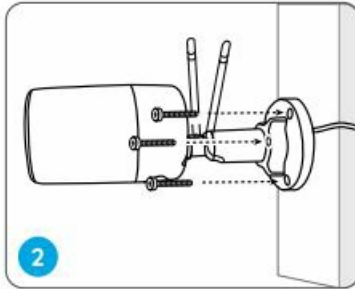
Install the Camera

- Drill holes in accordance with the mounting hole template.
- **NOTE:** Use the drywall anchors included in the package if needed
-

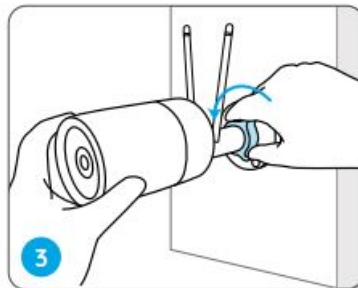


Install the mount base with the mounting screws included in the package.

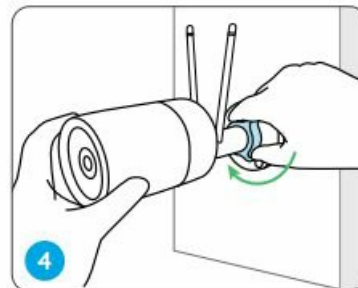
- **NOTE:** Run the cable through the cable notch on the mount base.



- To get the best field of view, loosen the adjustment knob on security mount and turn the camera.



- Stiffen the adjustment knob to lock the camera



Troubleshooting

Infrared LEDs Stop Working

If you find your camera is not powering on, try the following solutions:

- Please check whether the outlet is working properly or not. Try to plug the camera into a different outlet and see if it works.
- Please check whether the DC adapter is working or not. If you have another 12V DC power adapter which is working, please use another power adapter and see if it works.
- these won't work, contact Reolink Support <https://support.reolink.com/>.

Infrared LEDs Stop Working

- If the Infrared LEDs of your camera stop working, please try the Bfollowing solutions:
- Enable infrared lights on Device Settings page via Reolink App/Client.
- Check if the Day/Night mode is enabled and set up auto infrared lights at night on Live View page via Reolink App/Client.
- Upgrade the firmware of your camera to the latest version.
- Restore the camera to factory settings and check out the infrared light settings again.
- If these won't work, contact Reolink Support <https://support.reolink.com/>

Failed to Upgrade the Firmware

- If you fail to upgrade the firmware for the camera, try the following solutions:
- Check out the current camera firmware and see if it is the latest one.
- Make sure that you download the correct firmware from Download Center.
- Make sure that your PC is working on a stable network.
- If these won't work, contact Reolink Support <https://support.reolink.com/>.

Specifications General

- **Operating Temperature:** -10°C to 55°C (14°F to 131°F)
- **Operating Humidity:** 10%-90%
- **RLC-810WA Size:** Φ67 x 187mm
- **RLC-811WA Size:** 80 x 72 x 238mm
 - **(Weight:** 485.7g, for RLC-810WA)
 - **Weight:** 862.9, for RLC-811WA)
- For more Specifications, visit <https://reolink.com/>.

Notification of Compliance

FCC Compliance Statements

This device complies with Part 15 of the FCC Rules. Operation is subject to the following two conditions:

1. This device may not cause harmful interference, and
2. This device must accept any interference received, including interference that may cause undesired operation.

Note:

- This equipment has been tested and found to comply with the limits for a Class B digital device, pursuant to Part 15 of the FCC Rules. These limits are designed to provide reasonable protection against harmful interference in a residential installation. This equipment generates, uses and can radiate radio frequency energy and, if not installed and used in accordance with the instructions, may cause harmful interference to radio communications. However, there is no guarantee that interference will not occur in a particular installation. If this equipment does cause harmful interference to radio or television reception, which can be determined by turning the equipment off and on, the user is encouraged to try to correct the interference by one or more of the following measures:
 - Reorient or relocate the receiving antenna.

- Increase the separation between the equipment and receiver.
- Connect the equipment into an outlet on a circuit different from that to which the receiver is connected.
- Consult the dealer or an experienced radio/TV technician for help.

Caution:

- Changes or modifications not expressly approved by the party responsible for compliance could void the user's authority to operate the equipment

FCC Radiation Exposure statement

- This equipment complies with FCC radiation exposure limits set forth for an uncontrolled environment. This equipment should be installed and operated with minimum distance 20cm between the radiator and your body. This device contains licence-exempt transmitter(s)/receiver(s) that int rieur uniquement. comply with Innovation, Science and Economic Development Canada's licence-exempt RSS(s). Operation is subject to the following two conditions:

1. This device may not cause interference.
2. This device must accept any interference, including interference that may cause undesired operation of the device.

ISED Radiation Exposure statement

- This equipment complies with IC RSS-102 radiation exposure limits set forth for an uncontrolled environment. This equipment should be installed and operated with minimum distance 20 cm between the radiator and your body.


WiFi Operating Frequency

- OPERATING FREQUENCY :
- 2.4 GHz EIRP < 20dBm
- 5 GHz EIRP < 23dBm
- 5.8GHz EIRP < 14dBm



- The functions of Wireless Access Systems including Radio Local Area Networks(WAS/RLANs) within the band 5150-5350 MHz for this device are restricted to indoor use only within all European Union countries (BE/BG/CZ/DK/DE/EE/IE/EL/ES/FR/HR/ IT/CY/LV/LT/ LU/HU/MT/NL/AT/PL/PT/RO/SI/SK/FI/SE/TR/N O/CH/IS/LI/UK(NI)



-  Correct Disposal of This Product This marking indicates that this product should not be disposed with other household wastes. throughout the EU. To prevent possible harm to the environment or human health

from uncontrolled waste disposal, recycle it responsibly to promote the sustainable reuse of material resources. To return your used device, please use the return and collection systems or contact the retailer where the product was purchased. They can take this product for environmentally safe recycling. body.

- **Limited Warranty**

This product comes with a 2-year limited warranty that is valid only if purchased from Reolink Official Store or a Reolink authorized reseller. Learn more: <https://reolink.com/warranty-and-return/>.


- **Terms and Privacy**

Use of the product is subject to your agreement to the Terms of Service and Privacy Policy at reolink.com.

Keep out of reach of children.

Type of antenna	External antenna
Antenna Gain	2400-2500(2.89dBi) 5150-5850 (2.55dBi)
Impedance	50hm
Manufacture	Shenzhen Yingjiachang Electronics Co., LTD

Documents / Resources

	reolink RLC-811WA 4K 8MP Dual Band WiFi IP Camera [pdf] Instruction Manual RLC-811WA, RLC-811WA 4K 8MP Dual Band WiFi IP Camera, 4K 8MP Dual Band WiFi IP Camera, Dual Band WiFi IP Camera, Band WiFi IP Camera, WiFi IP Camera, IP Camera, Camera
---	---

References

- [🔗 Reolink Official: Security Cameras and Systems for Home & Business](#)
- [🔗 Reolink Official: Security Cameras and Systems for Home & Business](#)
- [🔗 Reolink Official: Security Cameras and Systems for Home & Business](#)
- [🔗 Warranty & Return – Reolink](#)
- [🔗 Reolink Support - Official Reolink Help Center](#)
- [🔗 Reolink Support - Official Reolink Help Center](#)