



reolink RLC-810A 4K 8MP Telecamera Esterno Bullet Instruction Manual

[Home](#) » [reolink](#) » reolink RLC-810A 4K 8MP Telecamera Esterno Bullet Instruction Manual 

reolink RLC-810A 4K 8MP Telecamera Esterno Bullet Instruction Manual

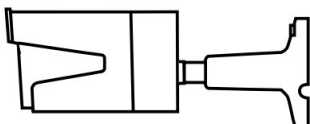


Contents

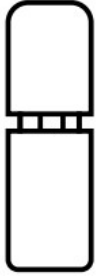
- [1 What's in the Box](#)
- [2 Camera Introduction](#)
- [3 Connection Diagram](#)
- [4 Set up the Camera](#)
- [5 Mount the Camera](#)
- [6 Troubleshooting](#)
- [7 Specifications](#)
- [8 Notification of Compliance](#)
- [9 Documents / Resources](#)
 - [9.1 References](#)
- [10 Related Posts](#)

What's in the Box

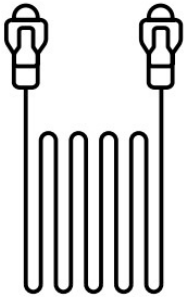
Camera



Waterproof Lid



Ethernet Cable



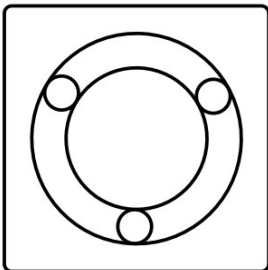
Quick Start Guide



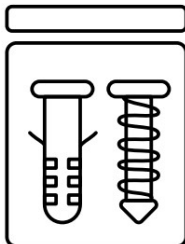
Surveillance Sign



Mounting Hole Template



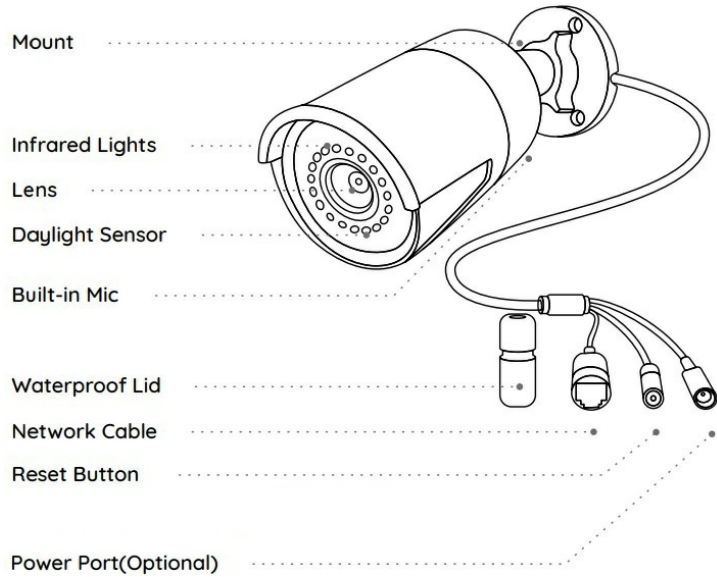
Pack of Screws



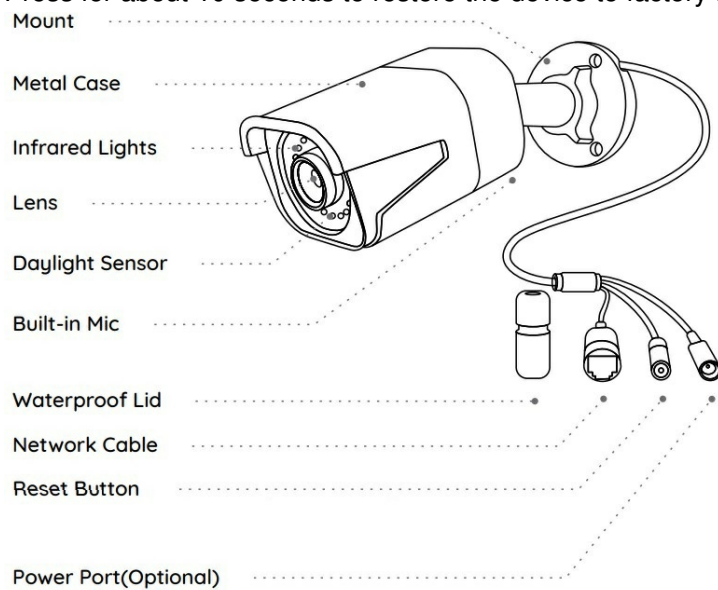
NOTE: Camera and accessories vary with different camera models that you purchase.

Camera Introduction

Press for about 10 seconds to restore the device to factory settings.



Press for about 10 seconds to restore the device to factory settings.



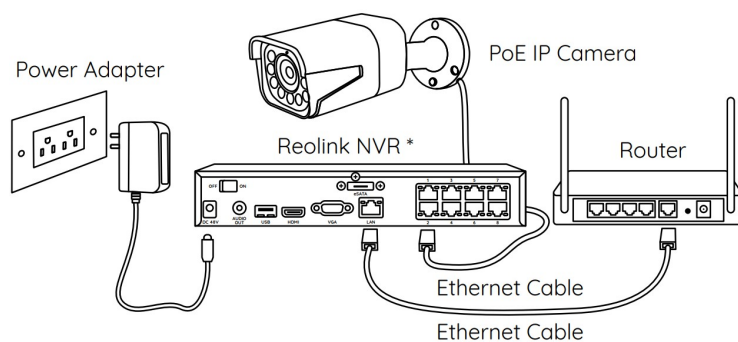
NOTE:

- Different types of cameras are introduced in this section. Please check out the camera included in the package and check out the details from the corresponding introduction above.
- The actual appearance and components may vary with different model of product.

Connection Diagram

NOTE:

- Different types of cameras are introduced in this section. Please check out the camera included in the package and check out the details from the corresponding introduction above.
- The actual appearance and components may vary with different model of product.



1. Before using the camera, please connect your camera as instructed below to finish initial setup.
2. Connect the camera to a Reolink NVR (not included) with an Ethernet cable.
3. Connect the NVR to your router, and then power on the NVR.

Set up the Camera

Download and launch the Reolink App or Client software, and follow the onscreen instructions to finish initial setup.



NOTE: If you are connecting the camera to a Reolink PoE NVR, please set up the camera via the NVR interface.

Mount the Camera

Installation Tips

- Do not face the camera towards any light sources.
- Do not point the camera towards a glass window. Or, it may result in poor image quality because of the window glare by infrared LEDs, ambient lights or status lights.
- Do not place the camera in a shaded area and point it towards a well-lit area. Or, it may result in poor image quality. To ensure best image quality, the lighting condition for both the camera and the capture object shall be the same.
- To ensure better image quality, it's recommended to clean the lens with a soft cloth from time to time.
- Make sure the power ports are not directly exposed to water or moisture and not blocked by dirt or other

elements.

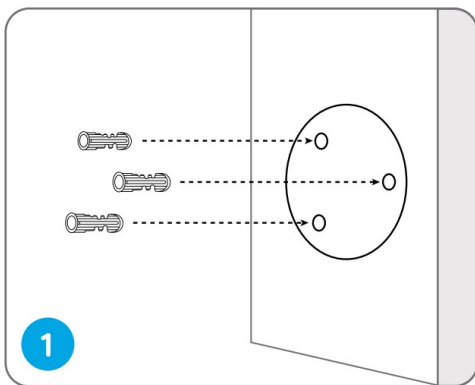
- With IP waterproof ratings, the camera can work properly under conditions like rain and snow. However, it doesn't mean the camera can work underwater.
- Do not install the camera at places where rain and snow can hit the lens directly.
- The camera may work in extreme cold conditions as low as -25°C. Because when it is powered on, the camera will produce heat. You may power on the camera indoors for a few minutes before installing it outdoors

NOTE: There are two different types of mounts for bullet cameras. Please check out the mount included in the package and follow the corresponding instruction to install the camera properly.

Install the Camera

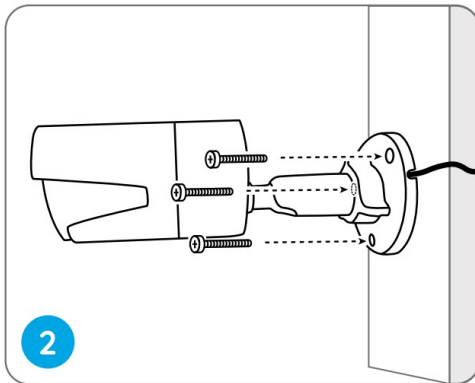
Drill holes in accordance with the mounting hole template

NOTE: Use the drywall anchors included in the package if needed.

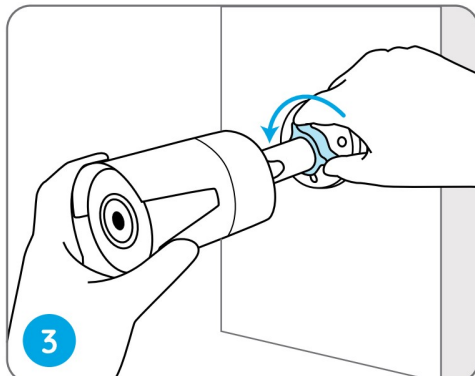


Install the mount base with the mounting screws included in the package

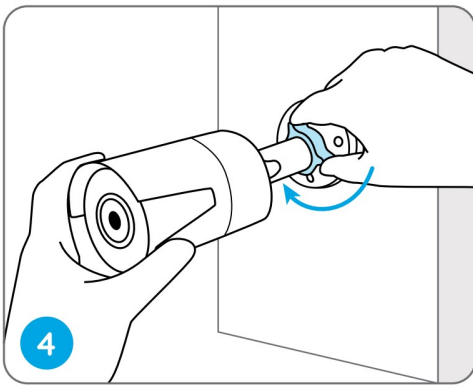
NOTE: Run the cable through the cable notch on the mount base.



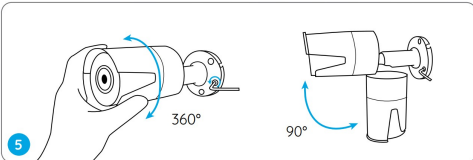
To get the best field of view, loosen the adjustment knob on security mount and turn the camera.



Stiffen the adjustment knob to lock the camera.



NOTE: If your camera has another mount without the adjusting knob, please loosen the adjusting screw with the provided hex key and turn the camera as shown below to adjust the angle.



Troubleshooting

Camera is not Powering On

If your camera is not powering on, please try the following solutions:

- Make sure your camera is powered properly. The PoE camera should be powered by a PoE switch/injector, the Reolink NVR or a 12V power adapter.
- If the camera is connected to a PoE device as listed above, connect the camera to another PoE port and see if the camera will power on.
- Try again with another Ethernet cable.

Infrared LEDs Stop Working

If the Infrared LEDs of your camera stop working, please try the following solutions:

- Enable infrared lights on Device Settings page via Reolink App/Client.
- Check if the Day/Night mode is enabled and set up auto infrared lights at night on Live View page via Reolink App/Client.
- Upgrade the firmware of your camera to the latest version.
- Restore the camera to factory settings and check out the infrared light settings again.

Failed to Upgrade the Firmware

If you fail to upgrade the firmware for the camera, try the following solutions:

- Check out the current camera firmware and see if it is the latest one.
- Make sure that you download the correct firmware from Download Center.
- Make sure that your PC is working on a stable network.

Specifications

Hardware Features

Night Vision: 30 Meters (100ft) Day/Night Mode: Auto Switchover

General

Operating Temperature: -10°C to 55°C (14°F to 131°F)

Operating Humidity: 10%-90%

In res Protection: IP66

Notification of Compliance

FCC Compliance Statement

This device complies with Part 15 of FCC Rules. Operation is subject to the following two conditions: (1) this device may not cause harmful interference, and (2) this device must accept any interference received, including interference that may cause undesired operation.

NOTE: This equipment has been tested and found to comply with the limits for a Class B digital device, pursuant to Part 15 of the FCC Rules. These limits are designed to provide reasonable protection against harmful interference in a residential installation.

Simplified EU Declaration of Conformity

Reolink declares that this device is in compliance with the essential requirements and other relevant provisions of Directive 2014/30/EU.



Correct Disposal of This Product

This marking indicates that this product should not be disposed with other household wastes. throughout the EU. To prevent possible harm to the environment or human health from uncontrolled waste disposal,

REOLINK INNOVATION LIMITED FLAT/RM 705 7/F FA YUEN COMMERCIAL BUILDING 75-77 FA YUEN STREET MONG KOK KL HONG KONG

EUI REPI Product Ident GmbH

Hoferstasse: 9B, 71636 Ludwigsburg, Germany prodsg@libelleconsulting.com


IUKI REPI

APEX CE SPECIALISTS LIMITED: 89 Princess Street, Manchester, M1 4HT, UK info@apex-ce.com

Aug: 2021 QSG1_B 5 8.0 3.00 5.0013

reolink
Be Prepared, Be Reolink

Documents / Resources

	<p>reolink RLC-810A 4K 8MP Telecamera Esterno Bullet [pdf] Instruction Manual</p> <p>RLC-810A, RLC-510A, RLC-410-5MP, RLC-811A, RLC-810A 4K 8MP Telecamera Esterno Bulle t, 4K 8MP Telecamera Esterno Bullet, 8MP Telecamera Esterno Bullet, Telecamera Esterno Bull et, Esterno Bullet, Bullet</p>
---	---

References

- [ce.com](#)