



# reolink RLC-511WA WiFi IP Camera Instruction Manual

[Home](#) » [reolink](#) » reolink RLC-511WA WiFi IP Camera Instruction Manual 

## Contents

- 1 reolink RLC-511WA WiFi IP Camera
- 2 Product Information
- 3 Product Usage Instructions
- 4 Installation
- 5 What's in the Box
- 6 Camera Introduction
- 7 Connection Diagram
- 8 Set up the Camera
- 9 Install the Camera
- 10 Troubleshooting
- 11 Specifications
- 12 Notification of Compliance
- 13 Limited Warranty
- 14 Documents / Resources
  - 14.1 References
- 15 Related Posts



**reolink RLC-511WA WiFi IP Camera**



## Product Information

The product is a security camera manufactured by REOLINK INNOVATION LIMITED. The camera comes with an antenna, power adapter, network cable, extension cable, pack of screws, surveillance sign, and a quick start guide. The camera has a metal aluminum case, infrared lights, high definition lens, daylight sensor, built-in mic, and a reset button. The camera can be connected to a router via an Ethernet cable and can be set up using the Reolink App or Client software.

## Product Usage Instructions

### Connection

Before initial setup, follow the steps below to connect your camera:

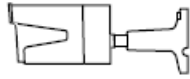
1. Connect the camera to a LAN port on your router with an Ethernet cable.
2. Power on the camera with a power adapter.

### Installation

Follow the instructions below to install the camera:

1. Drill holes in accordance with the mounting hole template. Use the drywall anchors included in the package if needed.
2. Install the mount base with the mounting screws included in the package. Run the cable through the cable notch on the mount base.
3. To get the best field of view, loosen the adjustment knob on the security mount and turn the camera.
4. Stiffen the adjustment knob to lock the camera. If your camera has another mount without the adjusting knob, please loosen the adjusting screw with the provided hex key and turn the camera to adjust the angle.
5. After adjustment, twist the screws back to lock the camera.

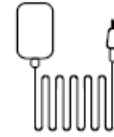
## What's in the Box



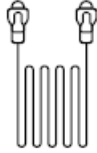
Camera



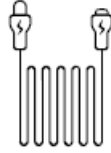
Antenna



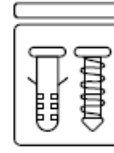
Power Adapter



1m  
Network Cable



4.5m Power  
Extension Cable



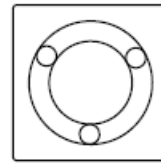
Pack  
of Screws



Surveillance Sign



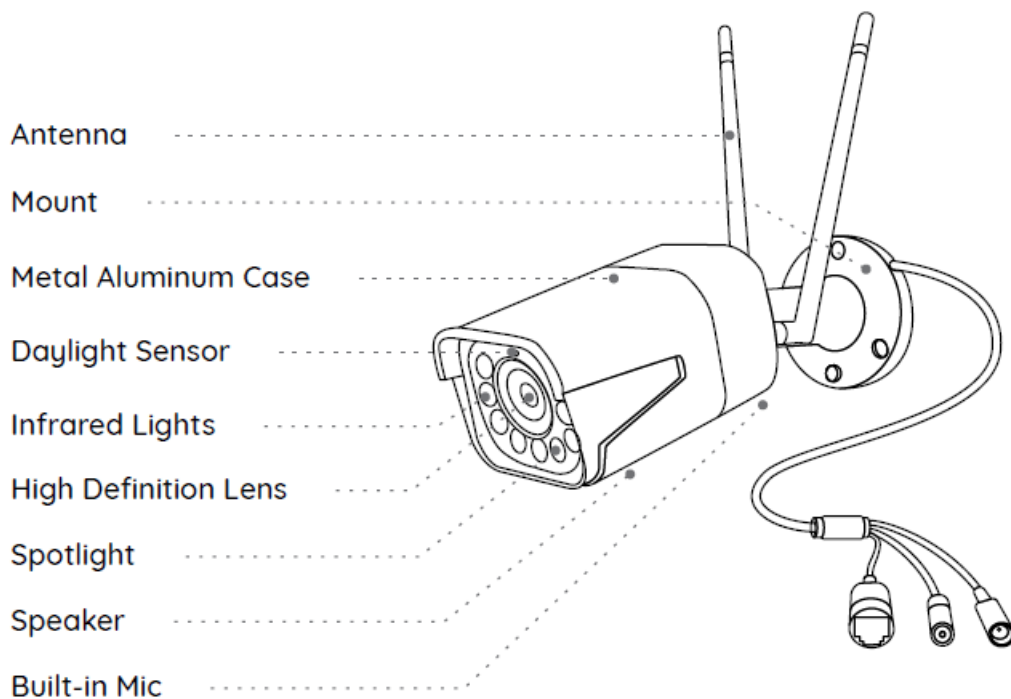
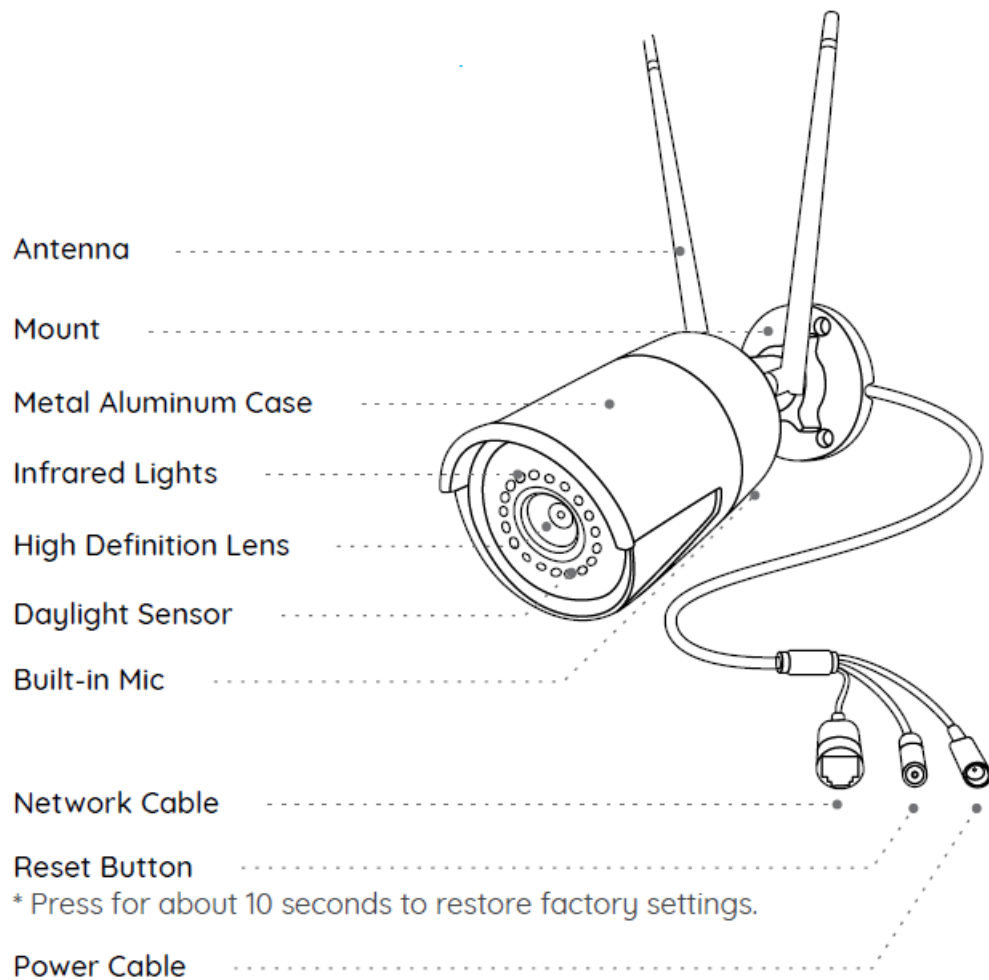
Quick Start Guide



Mounting  
Template

**NOTE:** Camera and accessories vary with different camera models that you purchase.

## Camera Introduction



#### NOTE:

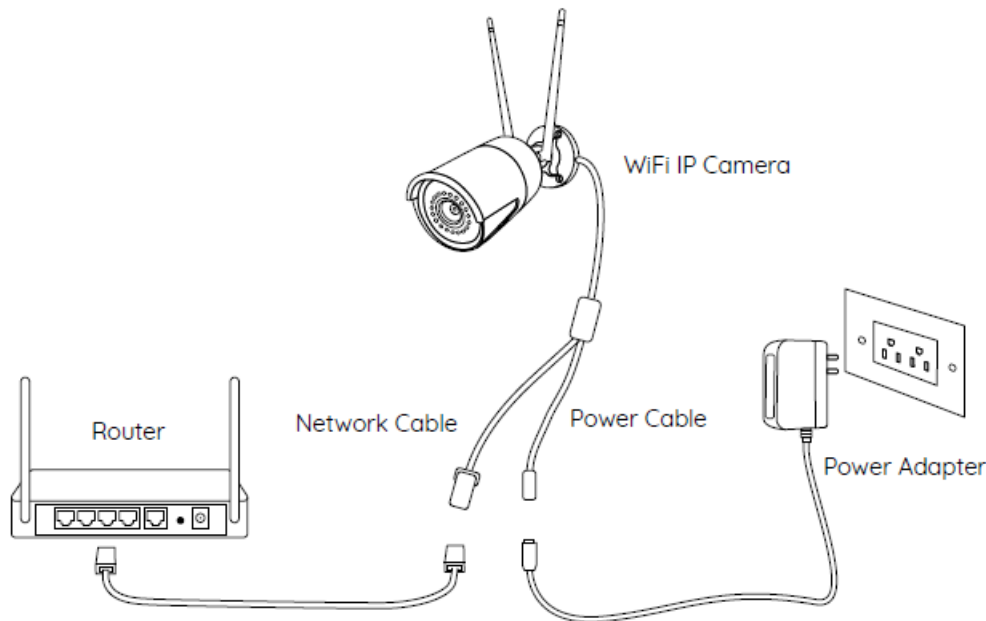
- Different types of cameras are introduced in this section. Please check out the camera included in the package and check out the details from the corresponding introduction above.

- The actual appearance and component and components may vary with different model of product.

## Connection Diagram

Before initial setup, follow the steps below to connect your camera.

1. Connect the camera to a LAN port on your router with an Ethernet cable.
2. Power on the camera with a power adapter.



## Set up the Camera

Download and launch the Reolink App or Client software, and follow the onscreen instructions to finish initial setup.

### On Smartphone

Scan to download the Reolink App.

### On PC

Download path of the Reolink Client: Go to <https://reolink.com> > Support > App & Client.

## Install the Camera

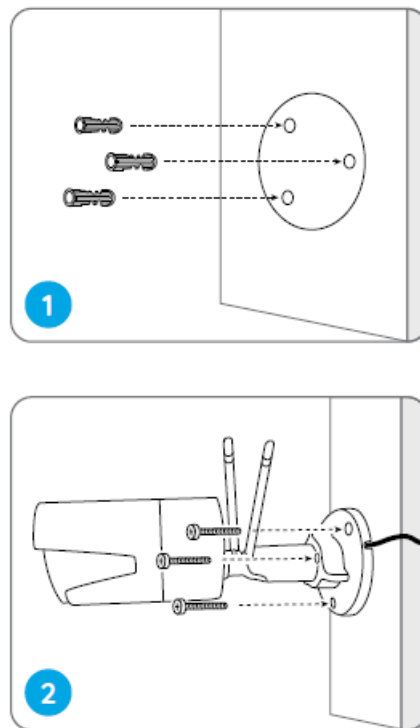
### Installation Tips

- Do not face the camera towards any light sources.
- Do not point the camera towards a glass window. Or, it may result in poor image performance because of the window glare by infrared LEDs, ambient lights or status lights.
- Do not place the camera in a shaded area and point it towards a well-lit area. Or, it may result in poor image performance. For better image quality, please make sure that the lighting condition for both the camera and the capture object is the same.

- For better image quality, it's recommended to clean the lens with a soft cloth from time to time.
- Make sure the power ports are not exposed to water or moisture or blocked by dirt or other elements.
- Do not install the camera at places where rain and snow may hit the lens directly.
- The camera may work in extreme cold conditions as low as -25°C. Because when it is powered on, the camera will produce heat. You may power on the camera indoors for a few minutes before installing it outdoors.

**NOTE:** There are two different types of mounts for bullet cameras. Please check out the mount included in the package and follow the corresponding instruction to install the camera properly.

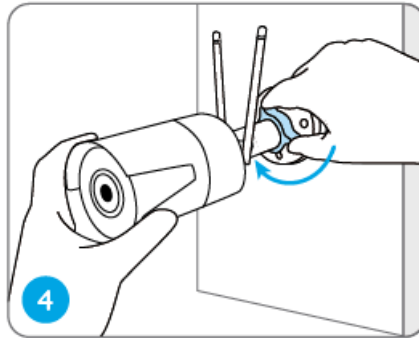
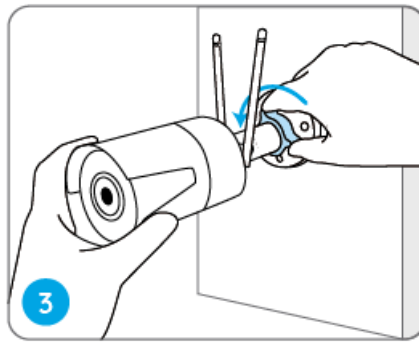
## Mount the Camera



Drill holes in accordance with the mounting hole template.

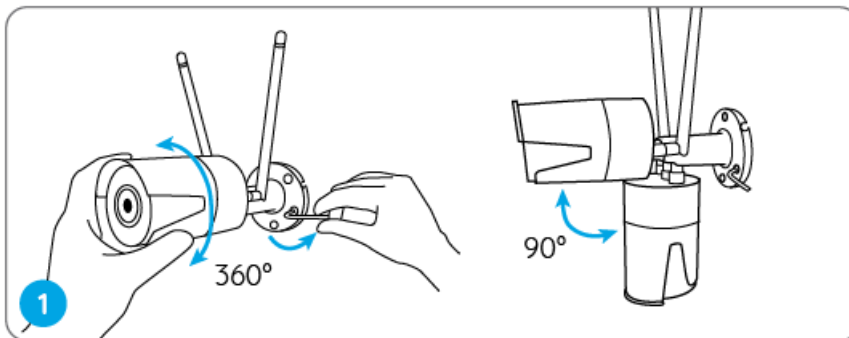
**NOTE:** Use the drywall anchors included in the package if needed. Install the mount base with the mounting screws included in the package.

Run the cable through the cable notch on the mount base.

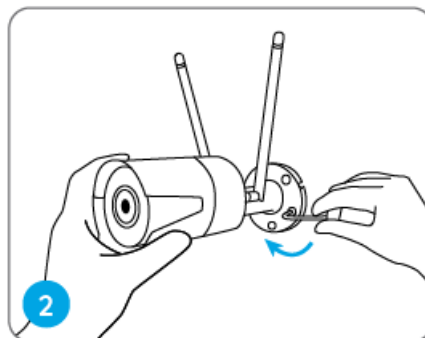


- To get the best field of view, loosen the adjustment knob on security mount and turn the camera.
- Stiffen the adjustment knob to lock the camera.

**NOTE:** If your camera has another mount without the adjusting knob, please loosen the adjusting screw with the provided hex key and turn the camera as shown below to adjust the angle.



Twist the screws with the wrench to unlock the camera and adjust its direction.



After adjustment, twist the screws back to lock the camera.

## Troubleshooting

If you encounter any issues with the camera, please refer to the troubleshooting section of the manual. If the issue

persists, please contact Reolink Support at <https://support.reolink.com>.

## **IP Camera is not Powering on**

- If you find your camera is not powering on, try the following solutions:
  - Please check whether the outlet is working properly or not. Try to plug the camera into a different outlet and see if it works.
  - Please check whether the DC adapter is working or not. If you have another 12V DC power adapter which is working, please use another power adapter and see if it works.

If these won't work, please contact Reolink Support

<https://support.reolink.com>

## **IR LEDs Stop Working**

If you find the IR LEDs of your camera stop working, try the following solutions:

- Go to Device Settings and check whether you have enabled Infrared LEDs. If the LEDs are disabled, please enable them.
- Please go to Live View and check the Day/Night mode. Set the mode to Auto to activate the IR lights.
- Upgrade your camera's firmware to the latest version.
- Restore the camera to the factory settings and check the IR light settings again.

If these won't work, please contact Reolink Support <https://support.reolink.com>

## **Specifications**

### **Hardware Features**

**IR Distance:** 30 meters (100ft)

**Day/Night Mode:** Auto switchover

### **General**

- **Operating Temperature:** -10°C to 55°C (14°F to 131°F)
- **Operating Humidity:** 10%-90%
- **Weather Resistance:** IP66 certified weatherproof

## **Notification of Compliance**

### **FCC Compliance Statement**

This device complies with Part 15 of FCC Rules. Operation is subject to the following two conditions: (1) this device may not cause harmful interference, and (2) this device must accept any interference received, including interference that may cause undesired operation. For more information, visit: <https://reolink.com/fcc-compliance-notice/>.

## **Simplified EU Declaration of Conformity**

Reolink declares that this device is in compliance with the essential requirements and other relevant provisions of Directive 2014/53/EU.



## Correct Disposal of This Product

This marking indicates that this product should not be disposed with other household wastes throughout the EU. To prevent possible harm to the environment or human health from uncontrolled waste disposal, recycle it responsibly to promote the sustainable reuse of material resources. To return your used device, please use the return and collection systems or contact the retailer where the product was purchased. They can take this product for environmentally safe recycling.

## Limited Warranty

This product comes with a 2-year limited warranty that is valid only if purchased from Reolink Official Store or Reolink authorized resellers. Learn more: <https://reolink.com/warranty-and-return/>.

**NOTE:** We hope that you enjoy the new purchase. But if you are not satisfied with the product and plan to return, we strongly suggest that you reset the camera to factory default settings and take out the inserted SD card before returning.

## Terms and Privacy

Use of the product is subject to your agreement to the Terms of Service and Privacy Policy at [reolink.com](https://reolink.com). Keep out of the reach of children.

## End User License Agreement

By using the Product Software that is embedded on the Reolink product, you agree to the terms of this End User License Agreement ("EULA") between you and Reolink. Learn more: <https://reolink.com/eula/>.

## ISED Radiation Exposure Statement

This equipment complies with RSS-102 radiation exposure limits set forth for an uncontrolled environment. This equipment should be installed and operated with minimum distance 20cm between the radiator & your body.

## OPERATING FREQUENCY (the maximum transmitted power)

- 2412MHz—2472MHz (19dBm)
- 5180 MHz—5320 MHz (18dBm)
- 5745 MHz—5825 MHz (18dBm)

## Documents / Resources

	<a href="#">reolink RLC-511WA WiFi IP Camera</a> [pdf] Instruction Manual RLC-511WA WiFi IP Camera, RLC-511WA, WiFi IP Camera, Camera
---	--

## References

- [ce.com](#)
- [Reolink: Global Innovator in Smart Home Security and Camera Solutions](#)
- [Reolink: Global Innovator in Smart Home Security and Camera Solutions](#)
- [Warranty & Return – Reolink](#)
- [Reolink Support - Official Reolink Help Center](#)