

reolink RLC-510WA WiFi IP Camera



reolink RLC-510WA WiFi IP Camera User Guide

[Home](#) » [reolink](#) » reolink RLC-510WA WiFi IP Camera User Guide 

Contents

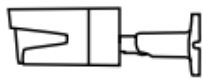
- 1 reolink RLC-510WA WiFi IP Camera
- 2 What's in the Box
- 3 Camera Introduction
- 4 Connection Diagram
- 5 Set up the Camera
- 6 Install the Camera
- 7 Troubleshooting
- 8 Specifications
- 9 Notification of Compliance
- 10 Product Specifications
- 11 FAQ
- 12 Documents / Resources
 - 12.1 References



reolink RLC-510WA WiFi IP Camera



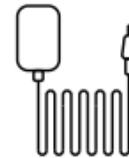
What's in the Box



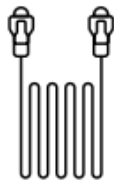
Camera



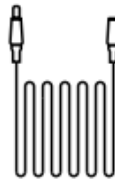
Antenna



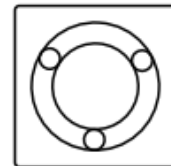
Power Adapter



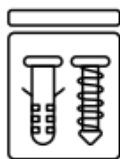
1m
Network Cable



4.5m Power
Extension Cable



Mounting
Template



Pack
of Screws



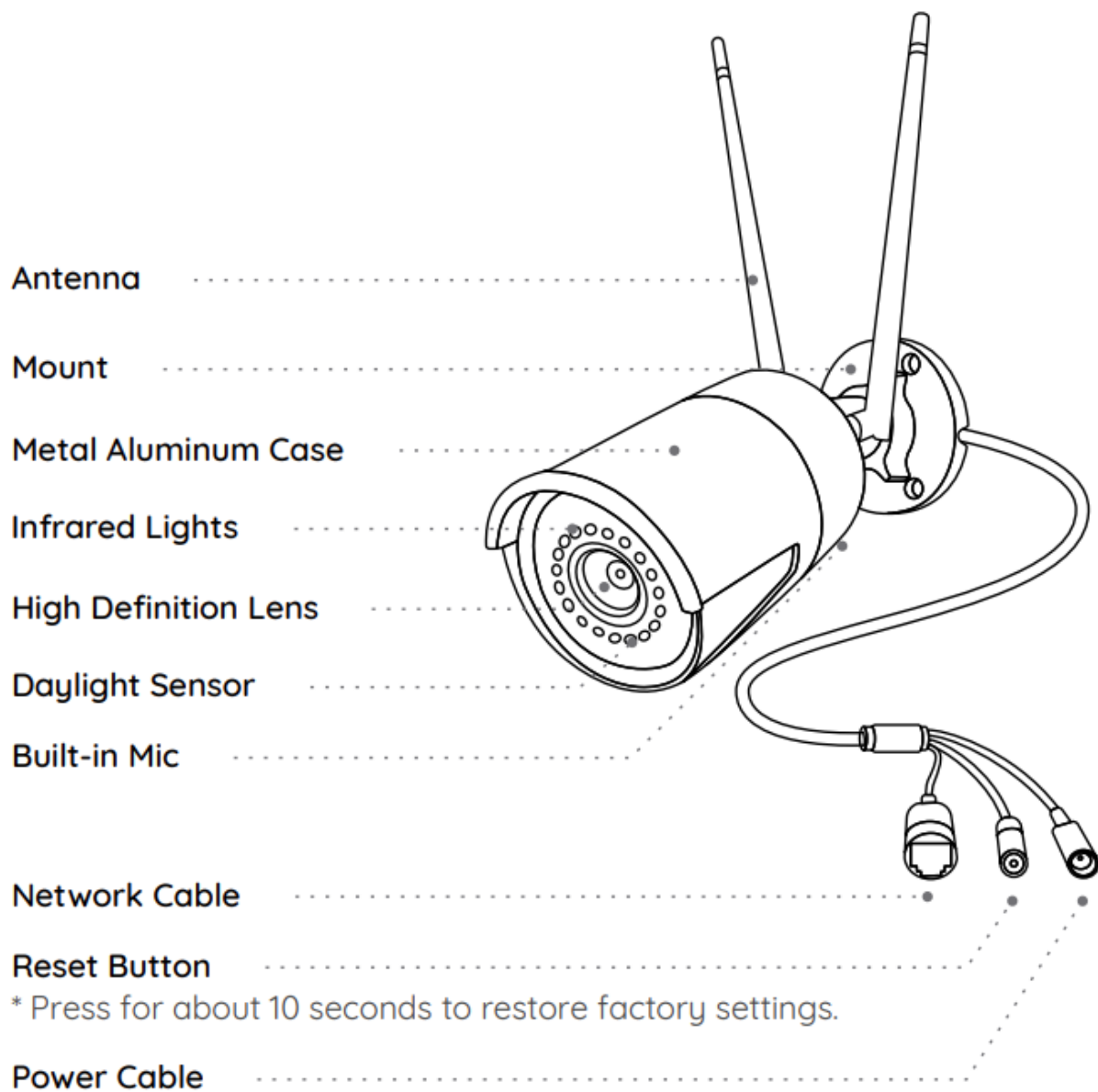
Surveillance Sign



Quick Start Guide

NOTE: Camera and accessories vary with different camera models that you purchase.

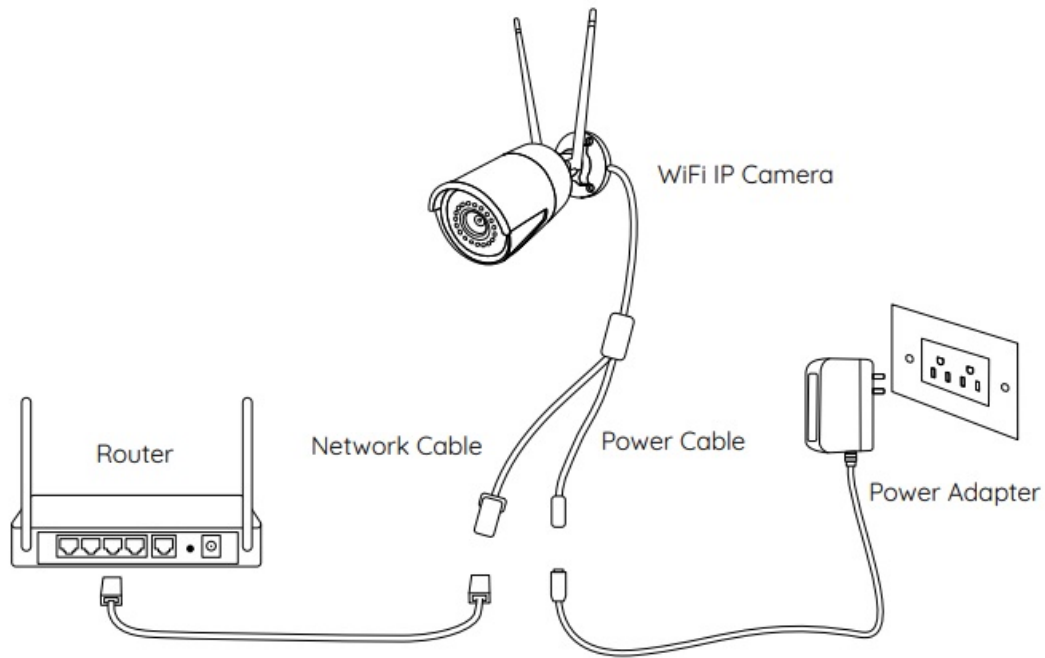
Camera Introduction



Connection Diagram

Before initial setup, follow the steps below to connect your camera.

1. Connect the camera to a LAN port on your router with an Ethernet cable.
2. Power on the camera with a power adapter.



Set up the Camera

Download and Launch the Reolink App or Client software, and follow the onscreen instructions to finish initial setup.

On Smartphone

Scan to download the Reolink App.



On PC

Download path of the Reolink Client: Go to <https://reolink.com>>Support>App & Client.

Install the Camera

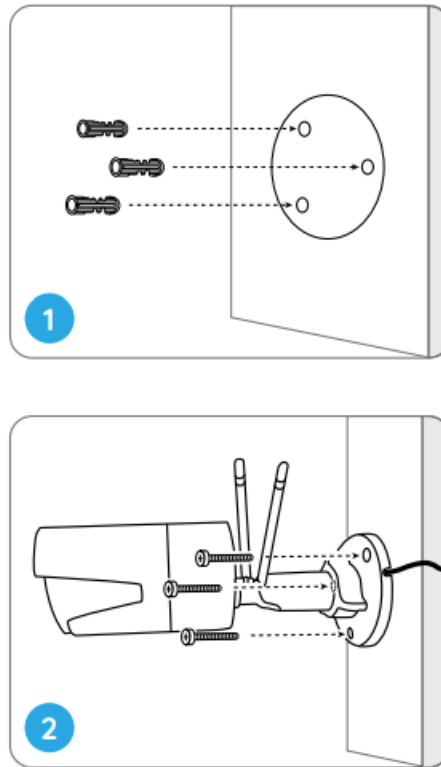
Installation Tips

- Do not face the camera towards any light sources.
- Do not point the camera towards a glass window. Or, it may result in poor image performance because of the window glare by infrared LEDs, ambient lights or status lights.
- Do not place the camera in a shaded area and point it towards a well-lit area. Or, it may result in poor image performance. For better image quality, please make sure that the lighting condition for both the camera and the captured object is the same.

- For better image quality, it's recommended to clean the lens with a soft cloth from time to time.
- Make sure the power ports are not exposed to water or moisture or blocked by dirt or other elements.
- Do not install the camera at places where rain and snow may hit the lens directly.

NOTE: There are two different types of mounts for bullet cameras. Please check out the mount included in the package and follow the corresponding instructions to install the camera properly.

Mount the Camera

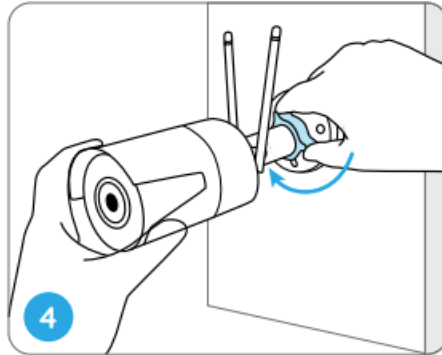
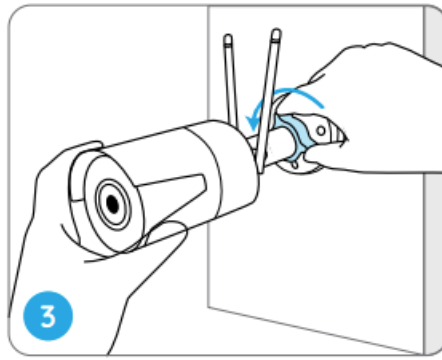


Drill holes by the mounting hole template.

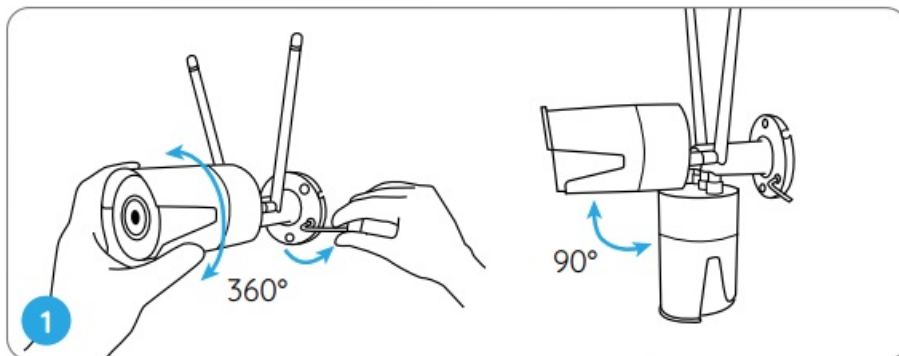
NOTE: Use the drywall anchors included in the package if needed. Install the mount base with the mounting screws included in the package.

NOTE: Run the cable through the cable notch on the mount base.

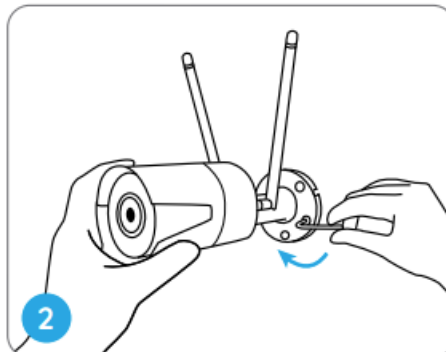
- To get the best field of view, loosen the adjustment knob on the security mount and turn the camera.
- Stiffen the adjustment knob to lock the camera.



NOTE: If your camera has another mount without the adjusting knob, please loosen the adjusting screw with the provided hex key and turn the camera as shown below to adjust the angle.



Twist the screws with the wrench to unlock the camera and adjust its direction.



- After adjustment, twist the screws back to lock the camera.

Troubleshooting

IP Camera Is Not Powering on

If you find your camera is not powering on, try the following solutions:

- Please check whether the outlet is working properly or not. Try to plug the camera into a different outlet and see if it works.
- Please check whether the DC adapter is working or not. If you have another 12V DC power adapter which is working, please use another power adapter and see if it works.

If these won't work, please contact Reolink Support

<https://support.reolink.com>

IR LEDs Stop Working

If you find the IR LEDs of your camera stop working, try the following solutions:

- Go to Device Settings and check whether you have enabled Infrared LEDs. If the LEDs are disabled, please enable them.
- Please go to Live View and check the Day/Night mode. Set the mode to Auto to activate the IR lights.
- Upgrade your camera's firmware to the latest version.
- Restore the camera to the factory settings and check the IR light settings again.

If these won't work, please contact Reolink Support at <https://support.reolink.com>

Specifications

Hardware Features

- IR Distance: 30 meters (100ft)
- Day/Night Mode: Auto switchover

General

Operating Temperature: -10°C to 55°C (14°F to 131°F) **Operating Humidity:** 10%-90%

Notification of Compliance

FCC Compliance Statements

This device complies with Part 15 of the FCC Rules. Operation is subject to the following two conditions: (1) this device may not cause harmful interference, and (2) this device must accept any interference received, including interference that may cause undesired operation.

Note: This equipment has been tested and found to comply with the limits for a Class B digital device, pursuant to Part 15 of the FCC Rules. These limits are designed to provide reasonable protection against harmful interference in a residential installation. This equipment generates, uses and can radiate radio frequency energy and, if not installed and used in accordance with the instructions, may cause harmful interference to radio communications. However, there is no guarantee that interference will not occur in a particular installation. If this equipment does cause harmful interference to radio or television reception, which can be determined by turning the equipment off and on, the user is encouraged to try to correct the interference by one or more of the following measures:

- Reorient or relocate the receiving antenna.
- Increase the separation between the equipment and receiver.
- Connect the equipment into an outlet on a circuit different from that to which the receiver is connected.

- Consult the dealer or an experienced radio/TV technician for help.

Caution: Changes or modifications not expressly approved by the party responsible for compliance could void the user's authority to operate the equipment.

FCC Radiation Exposure Statement

This equipment complies with FCC radiation exposure limits set forth for an uncontrolled environment. This equipment should be installed and operated with a minimum distance 20cm between the radiator and your body.

ISED Compliance Statements

This device contains licence-exempt transmitter(s)/receiver(s) that comply with Innovation, Science and Economic Development Canada's licence-exempt RSS(s). Operation is subject to the following two conditions:

1. This device may not cause interference.
2. This device must accept any interference, including interference that may cause undesired operation of the device.

ISED Radiation Exposure Statement

This equipment complies with IC RSS-102 radiation exposure limits set forth for an uncontrolled environment. This equipment should be installed and operated with a minimum distance 20 cm between the radiator and your body. The radio transmitter IC: 26839-2402C has been approved by Innovation, Science and Economic Development Canada to use the following antenna types with a specified maximum allowable gain. Antenna types not included in this list whose gain is higher than the maximum gain of any of the listed types are strictly prohibited from use with this device.

Type of antenna	External antenna
Antenna Gain	2400-2500(2.89dBi) 5150-5850 (2.55dBi)
Impedance	50hm
Manufacture	Shenzhen Yingjiachang Electronics Co., LTD

Weather Resistance: IP66 certified weatherproof

Product Specifications

- **Model:** RLC-510WA
- **Material:** Metal Aluminum Case
- **Resolution:** High Definition
- **Connectivity:** WiFi
- **Features:** Infrared Lights, Daylight Sensor, Built-in Mic
- **Reset Button:** Press for about 10 seconds to restore factory settings

FAQ

IP Camera Is Not Powering on:

If your camera is not powering on, try these solutions:

1. Check the power source and connections.

2. Ensure the power adapter is functioning correctly.

If the issue persists, contact Reolink Support.


IR LEDs Stop Working

If the IR LEDs of your camera stop working, try these solutions:

1. Check the camera settings for IR functionality.
2. Clean the camera lens and IR sensors.

If the problem continues, contact Reolink Support.

Documents / Resources

	reolink RLC-510WA WiFi IP Camera [pdf] User Guide RLC-510WA WiFi IP Camera, RLC-510WA, WiFi IP Camera, IP Camera, Camera
---	---

References

- [User Manual](#)

[Manuals+](#), [Privacy Policy](#)

This website is an independent publication and is neither affiliated with nor endorsed by any of the trademark owners. The "Bluetooth®" word mark and logos are registered trademarks owned by Bluetooth SIG, Inc. The "Wi-Fi®" word mark and logos are registered trademarks owned by the Wi-Fi Alliance. Any use of these marks on this website does not imply any affiliation with or endorsement.