



Contents [[hide](#)]

- [1 Reolink RLC-510WA Smart 5MP 5-2.4 GHz Wi-Fi Security Camera](#)
- [2 Specifications](#)
- [3 Working Environment](#)
 - [3.1 Gallery & Specs](#)
 - [3.2 Installation](#)
 - [3.3 Setup](#)
 - [3.4 Usage](#)
 - [3.5 Maintenance](#)
 - [3.6 FAQs](#)
- [4 Documents / Resources](#)
 - [4.1 References](#)



Reolink RLC-510WA Smart 5MP 5-2.4 GHz Wi-Fi Security Camera



- Person/Vehicle Detection
- 5MP/4MP Super HD
- 2.4/5 GHz WiFi

Specifications

Video & Audio

Feature	Specification
Image Sensor	1/2.7" CMOS Sensor
Video Resolution	2560 x 1920 (5.0 MP) @ 20fps (default)
Lens	f = 4.0mm fixed, F = 2.0, with IR cut
Video Compression	H.264
Field of View	Horizontal: 80° / Vertical: 42°

Feature	Specification
Day & Night	IR-cut filter with auto-switching
Night Vision	30 meters (100 ft), 18pcs/14mil/850nm IR LEDs
Audio	Audio recording, built-in microphone

Power

Feature	Specification
Power Supply	DC 12V \pm 10%, 1A, <12W
Power Port	DC power port

Interface

Feature	Specification
Reset Button	Yes
Ethernet Port	1x 10M/100Mbps RJ45
Storage	microSD card slot (Max. 256GB)
Audio	Built-in microphone

Software Features

Feature	Specification
Frame Rate	Mainstream: 2–30fps (default 20fps); Substream: 4–15fps (default 10fps)
Bitrate	Mainstream: 1024–8192Kbps (default 4096Kbps); Substream: 64–512Kbps (default 256Kbps)

Feature	Specification
Recording Modes	Motion recording, scheduled recording, 24/7 recording
Smart Alarm	Motion detection, human detection, vehicle detection
Browser Support	Edge, Chrome, Firefox, Safari
OS Support	Windows, macOS, iOS, Android
Smart Assistant	Google Assistant compatible

Network Protocols

Protocols Supported
HTTPS, SSL, TCP/IP, UDP, HTTP, IPv4, UPnP, RTSP, RTMP, SMTP, NTP, DHCP, DNS, DDNS, FTP, P2P

User Access

Feature	Specification
Max Users	20 (1 admin + 19 users)
Simultaneous Streams	Up to 12 (10 substreams + 2 mainstreams)

Wireless

Feature	Specification
Standards	IEEE 802.11a/b/g/n
Frequencies	2.4GHz / 5GHz

Feature	Specification	
Security	WPA-PSK / WPA2-PSK	
	Working Environment	
	Feature	Specification
	Operating Temperature	-10°C to +55°C (14°F to 131°F)
	Operating Humidity	10% to 90%
	Weatherproof	IP67

Size & Weight

Feature	Specification
Dimensions	Φ67 x 186mm
Weight	415g

Warranty

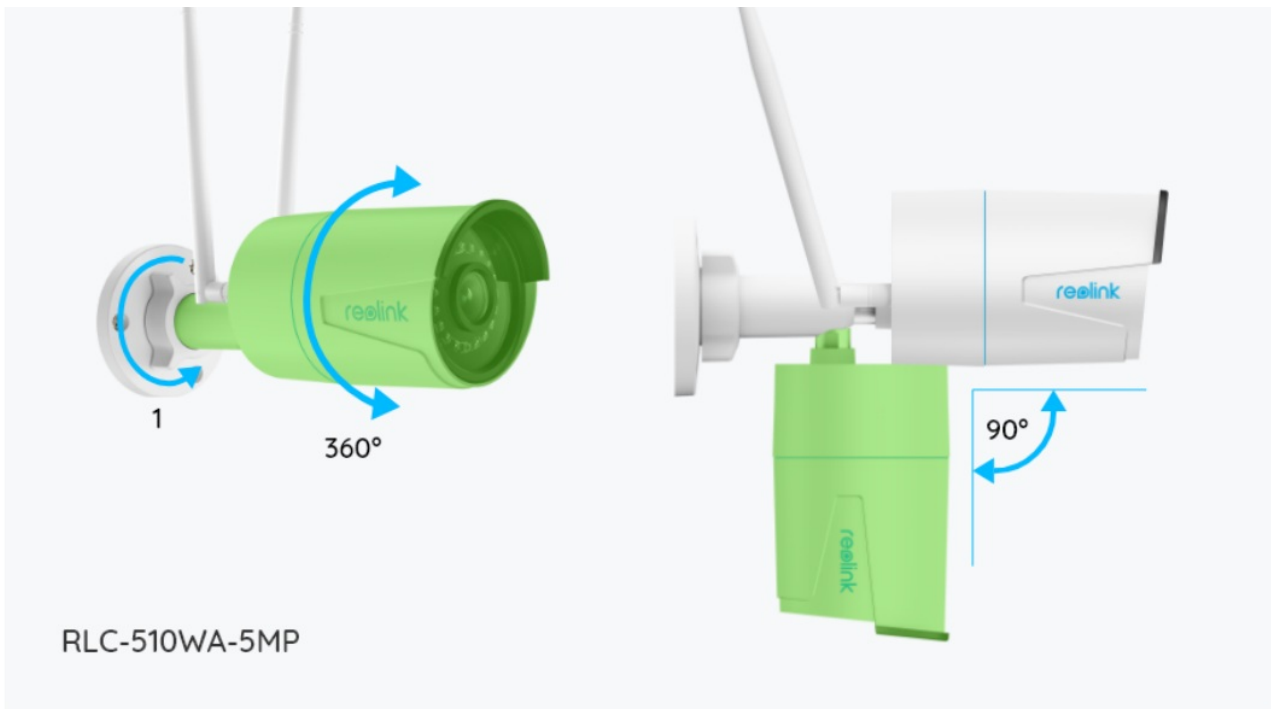
Feature	Specification
Warranty	2-year limited warranty

Gallery & Specs

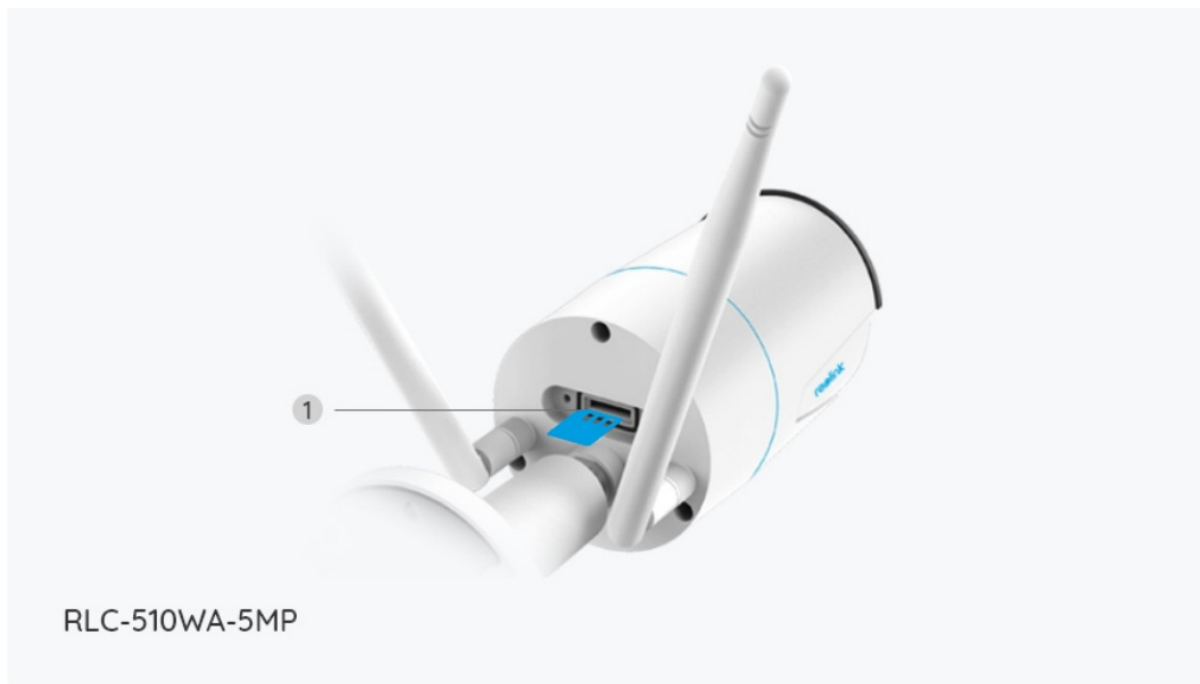


1. Antenna
2. Mount
3. Metal Aluminum Case
4. 18 IR LEDs
5. High Definition Lens (f=4.0mm)
6. Daylight Sensor

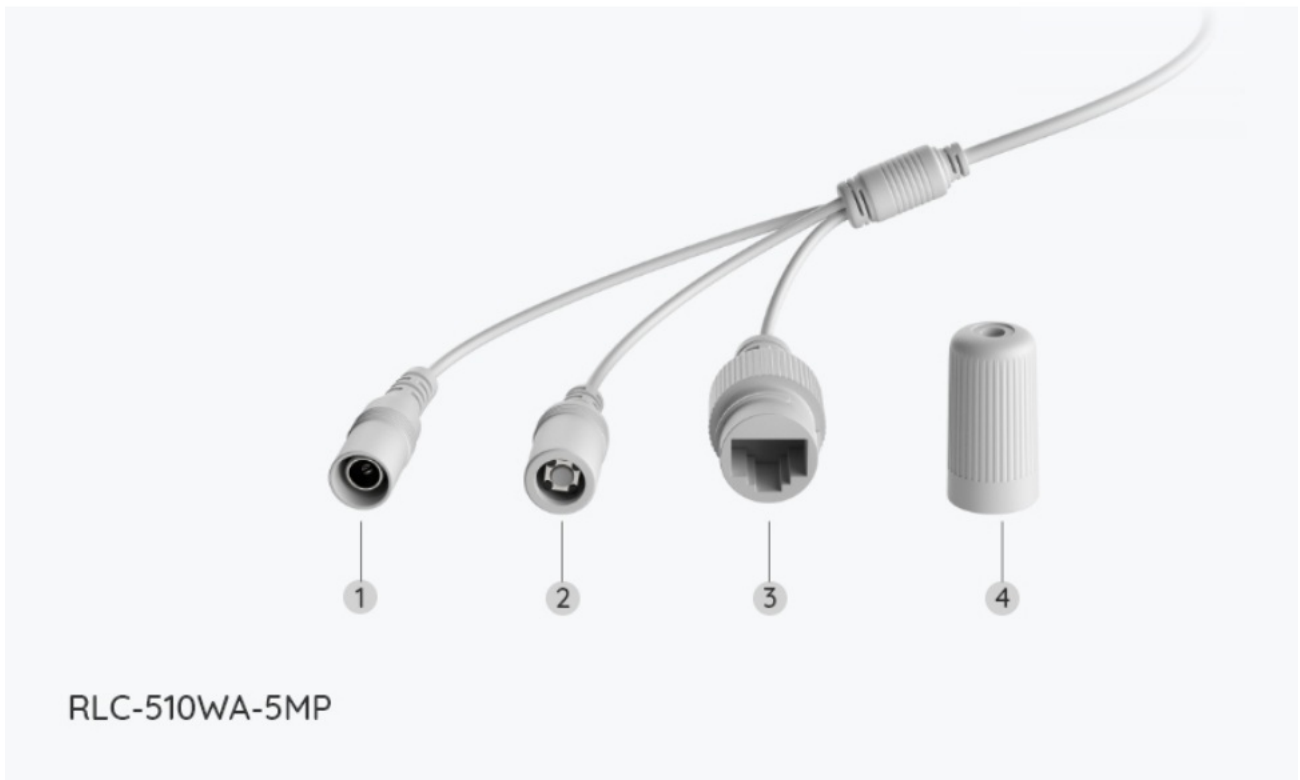
Unscrew it (counterclockwise) to loosen the bracket and adjust the camera in any direction.
2. After the Adjustment, twist it back to fix the camera.



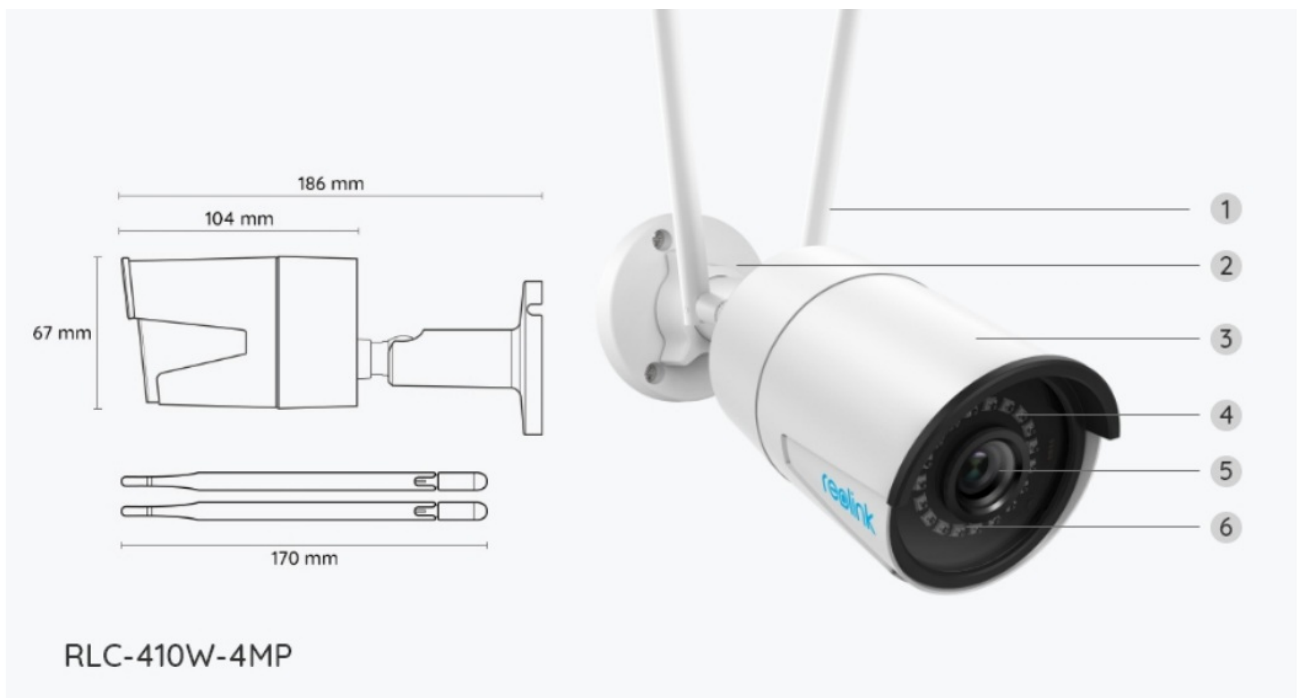
Micro SD Card Slot



1. Power
2. Reset Button
3. Network
4. Waterproof Lid

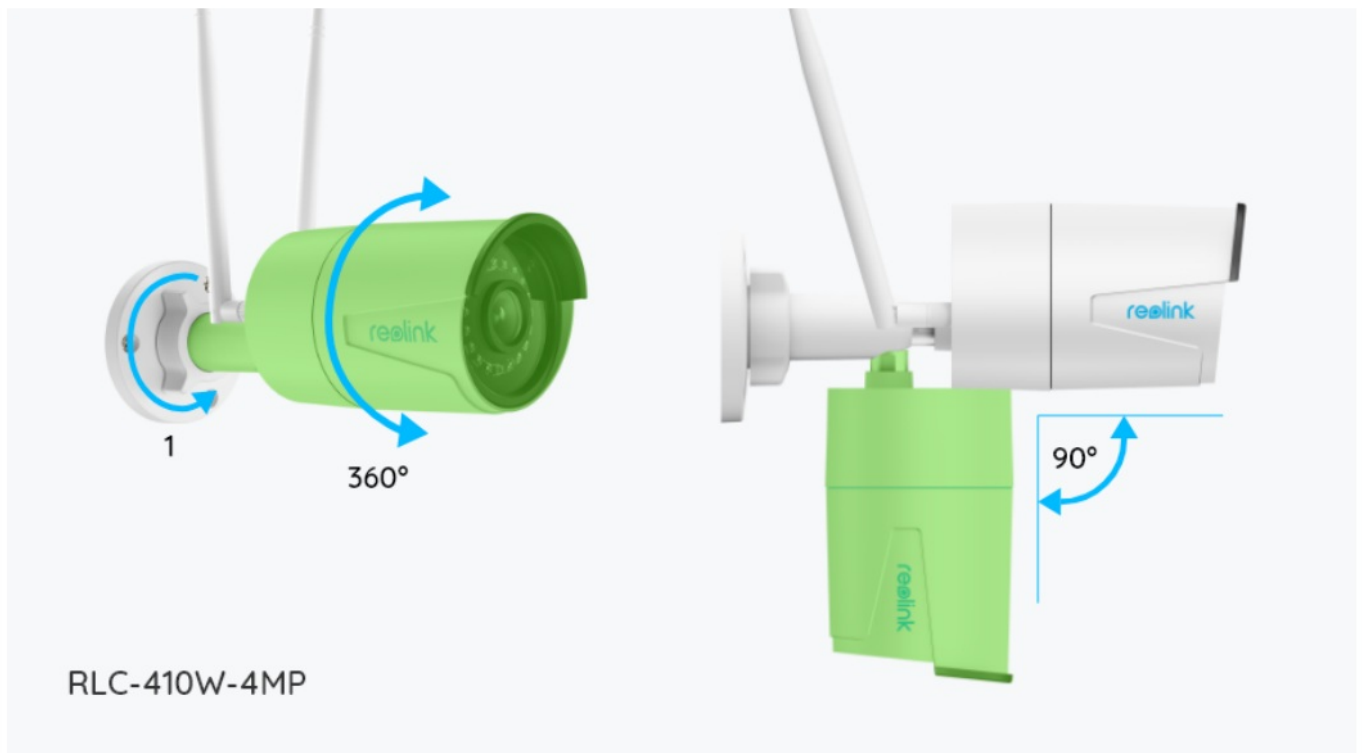


1. Antenna



2. Mount
3. Metal Aluminum Case
4. 18 IR LEDs
5. High Definition Lens (f=4.0mm)
6. Daylight Sensor

Unscrew it (counterclockwise) to loosen the bracket and adjust the camera in any direction.
2. After the Adjustment, twist it back to fix the camera.



Micro SD Card Slot



1. Power
2. Reset Button
3. Network
4. Waterproof Lid



Installation

1. Choose a suitable mounting location for the camera.
2. Ensure the camera is within the Wi-Fi range.
3. Mount the camera securely using the provided hardware.

Setup

1. Connect the camera to a power source using the DC power interface.
2. Follow the manufacturer's instructions to connect the camera to your Wi-Fi network.
3. Adjust the camera angle and settings as needed using the accompanying app or software.

Usage

To view live video feed: Launch the camera's app or access the camera's IP address through a web browser on a compatible device.

Maintenance

Regularly clean the camera lens and housing to ensure clear image quality.

FAQs


Q: How far can the night vision of the camera reach?

A: The night vision range of the camera is up to 23 meters.

Q: Can the camera be powered using a battery?

A: No, the camera requires a DC power source with a voltage of 12.0V and a current of 1A.

Documents / Resources



[Reolink RLC-510WA Smart 5MP 5-2.4 GHz Wi-Fi Security Camera \[pdf\]](#)


User Manual


RLC-510WA, W320, RLC-510WA Smart 5MP 5-2.4 GHz Wi-Fi Security Camera, RLC-510WA, Smart 5MP 5-2.4 GHz Wi-Fi Security Camera, 5MP 5-2.4 GHz Wi-Fi Security Camera, Wi-Fi Security Camera, Security Came

ra

References

- [User Manual](#)

 reolink

 5MP 5-2.4 GHz Wi-Fi Security Camera, reolink, RLC-510WA, RLC-510WA Smart 5MP 5-2.4 GHz Wi-Fi Security Camera, Security Camera, Smart 5MP 5-2.4 GHz Wi-Fi Security Camera, W320, Wi-Fi Security Camera

Leave a comment

Your email address will not be published. Required fields are marked *

Comment *

Name

Email

Website

☐ Save my name, email, and website in this browser for the next time I comment.

Post Comment

Search:

e.g. whirlpool wrf535swhz

Search

[Manuals+](#) | [Upload](#) | [Deep Search](#) | [Privacy Policy](#) | [@manuals.plus](#) | [YouTube](#)

This website is an independent publication and is neither affiliated with nor endorsed by any of the trademark owners. The "Bluetooth®" word mark and logos are registered trademarks owned by Bluetooth SIG, Inc. The "Wi-Fi®" word mark and logos are registered trademarks owned by the Wi-Fi Alliance. Any use of these marks on this website does not imply any affiliation with or endorsement.