



## reolink RLC-410W-4MP Wifi IP Camera Instruction Manual

[Home](#) » [reolink](#) » reolink RLC-410W-4MP Wifi IP Camera Instruction Manual 

### Contents

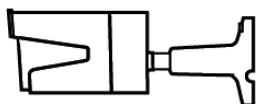
- 1 reolink RLC-410W-4MP Wifi IP Camera
- 2 What's in the Box
- 3 Camera Introduction
- 4 Connection Diagram
- 5 Set up the Camera
- 6 Install the Camera
- 7 Mount the Camera
- 8 Troubleshooting
  - 8.1 IP Camera Is Not Powering on
  - 8.2 IR LEDs Stop Working
- 9 Specifications
  - 9.1 Hardware Features
  - 9.2 General
- 10 Notification of Compliance
  - 10.1 FCC Compliance Statement
  - 10.2 Simplified EU Declaration of Conformity
  - 10.3 Correct Disposal of This Product
  - 10.4 Limited Warranty
- 11 Terms and Privacy
  - 11.1 OPERATING FREQUENCY
- 12 Documents / Resources
- 13 Related Posts

**reolink**  
Be Prepared, Be Reolink

## reolink RLC-410W-4MP Wifi IP Camera



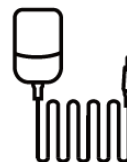
### What's in the Box



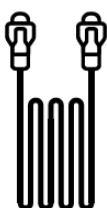
Camera



Antenna



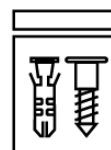
Power Adapter



1m  
Network Cable



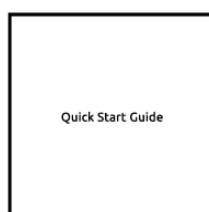
4.5m Power  
Extension Cable



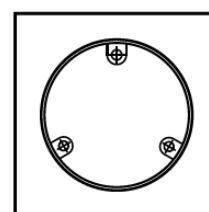
Pack  
of Screws



Surveillance Sign



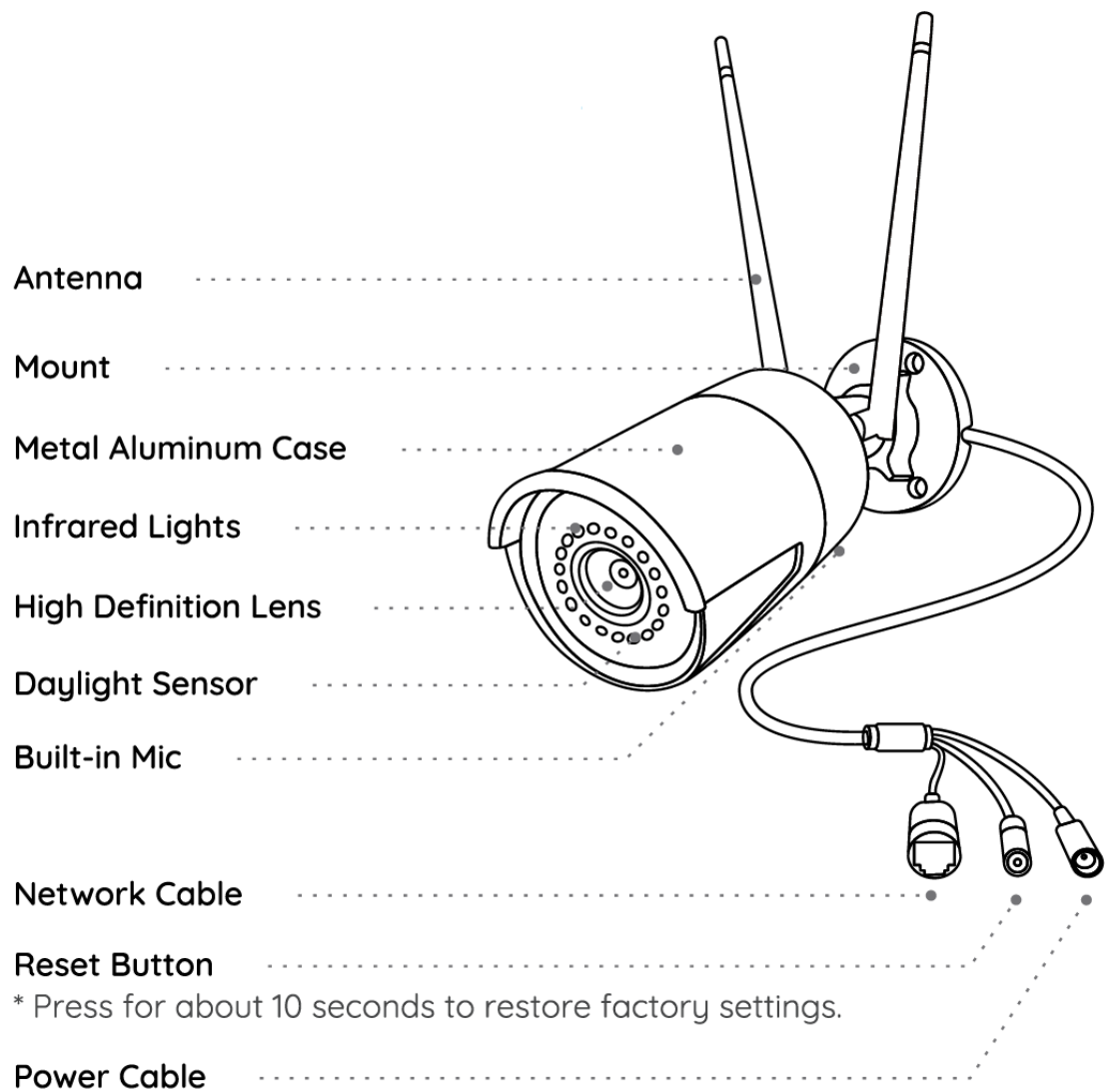
Quick Start Guide

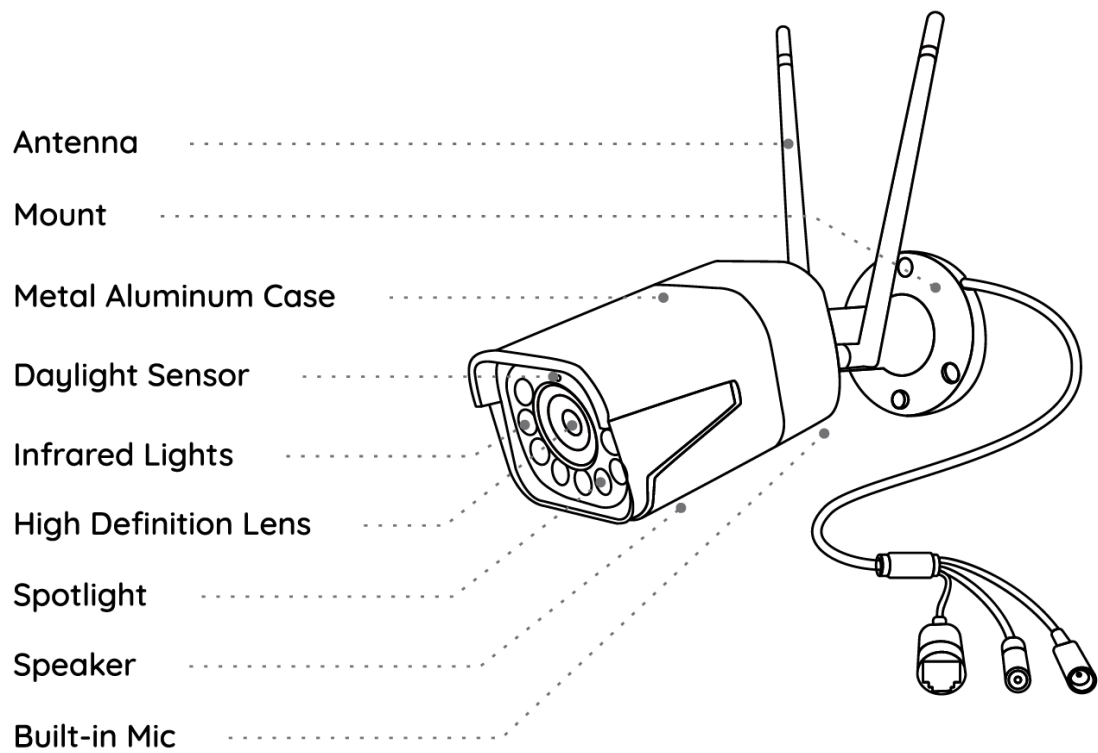


Mounting  
Template

**NOTE:** Camera and accessories vary with different camera models that you purchase.

## Camera Introduction





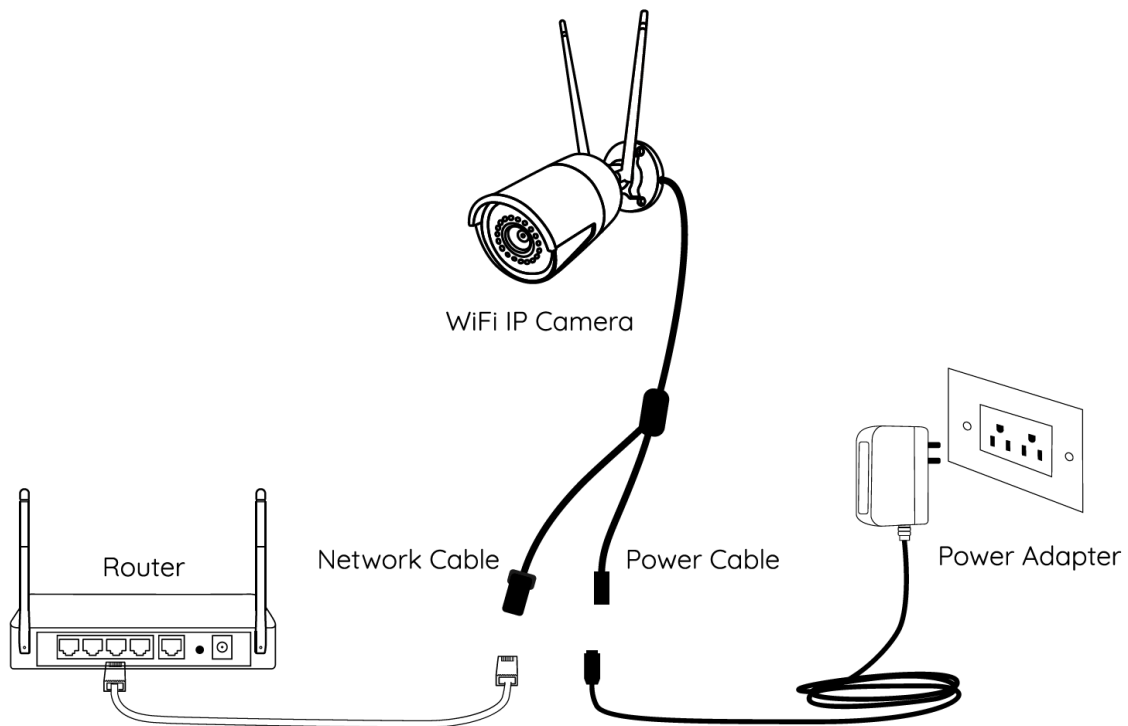
**Note:**

- Different types of cameras are introduced in this section. Please check out the camera included in the package and check out the details from the corresponding introduction above.
- The actual appearance and components may vary with different model of product.

**Connection Diagram**

Before initial setup, follow the steps below to connect your camera.

1. Connect the camera to a LAN port on your router with an Ethernet cable.
2. Power on the camera with a power adapter.



## Set up the Camera

Download and Launch the Reolink App or Client software, and follow the onscreen instructions to finish initial setup.

- **On Smartphone**

Scan to download the Reolink App.



- **On PC**

Download path of the Reolink Client: Go to <https://reolink.com> > Support > App & Client.

## Install the Camera

### Installation Tips

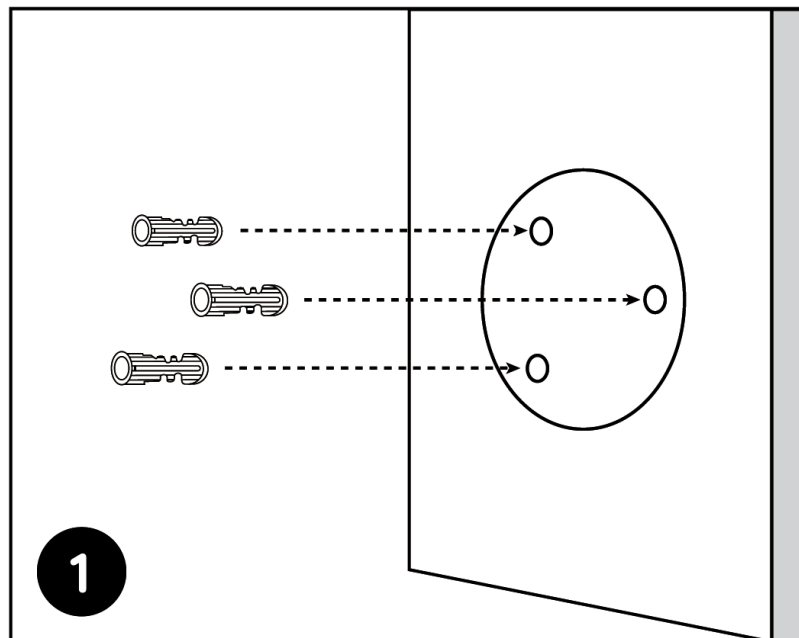
- Do not face the camera towards any light sources.
- Do not point the camera towards a glass window. Or, it may result in poor image performance because of the

window glare by infrared LEDs, ambient lights or status lights.

- Do not place the camera in a shaded area and point it towards a well-lit area. Or, it may result in poor image performance. For better image quality, please make sure that the lighting condition for both the camera and the capture object is the same.
- For better image quality, it's recommended to clean the lens with a soft cloth from time to time.
- Make sure the power ports are not exposed to water or moisture or blocked by dirt or other elements.
- Do not install the camera at places where rain and snow may hit the lens directly.
- The camera may work in extreme cold conditions as low as -25°C. Because when it is powered on, the camera will produce heat. You may power on the camera indoors for a few minutes before installing it outdoors.

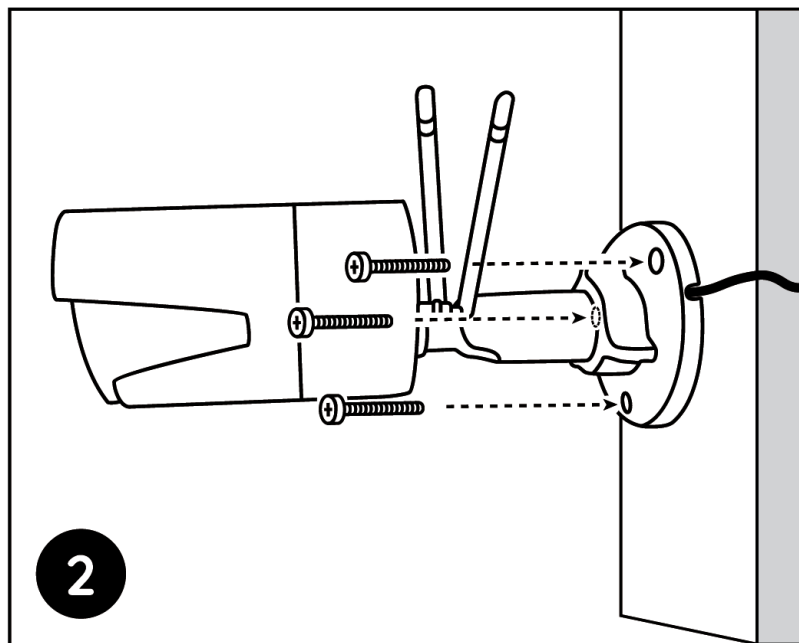
**Note:** There are two different types of mounts for bullet cameras. Please check out the mount included in the package and follow the corresponding instruction to install the camera properly.

## Mount the Camera



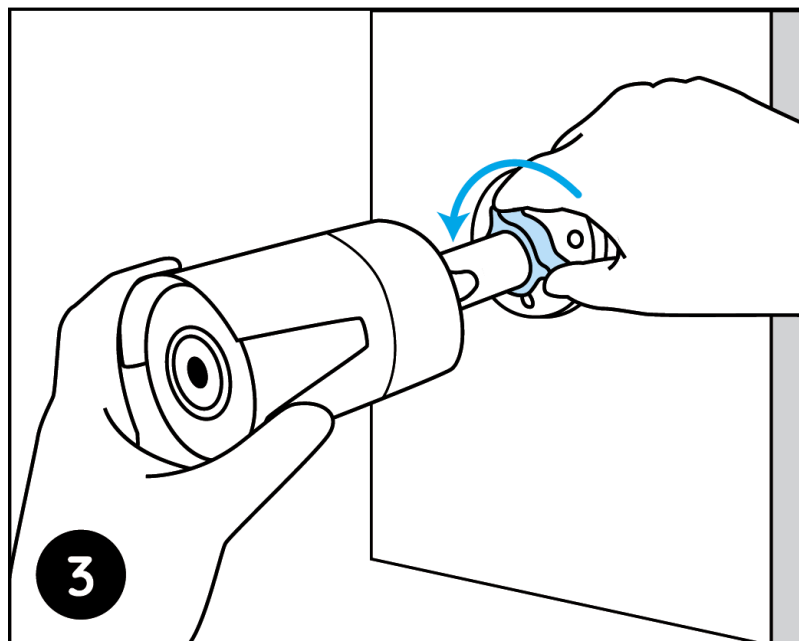
Drill holes in accordance with the mounting hole template.

**Note:** Use the drywall anchors included in the package if needed.

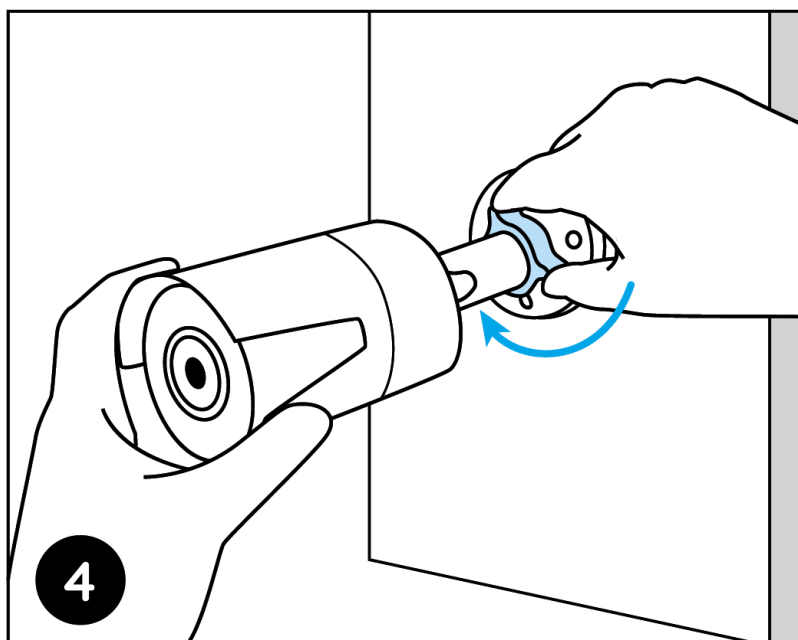


Install the mount base with the mounting screws included in the package.

**Note:** Run the cable through the cable notch on the mount base.

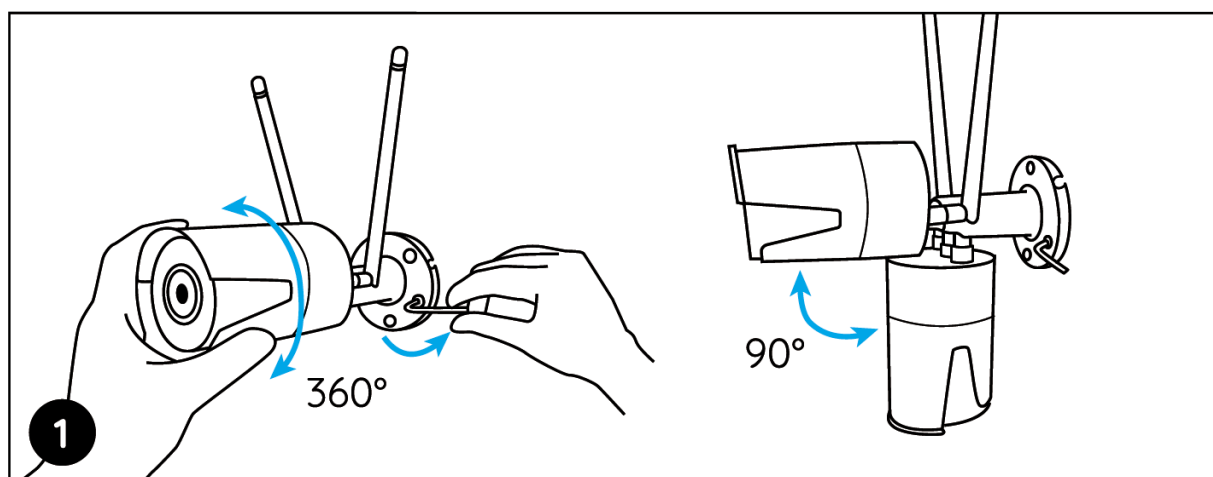


To get the best field of view, loosen the adjustment knob on security mount and turn the camera.

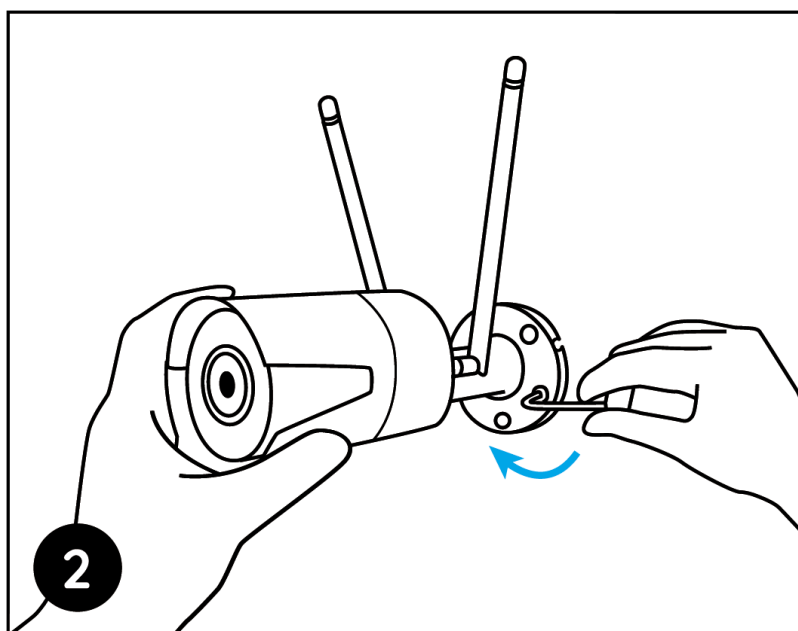


Stiffen the adjustment knob to lock the camera.

**NOTE:** If your camera has another mount without the adjusting knob, please loosen the adjusting screw with the provided hex key and turn the camera as shown below to adjust the angle.



Twist the screws with the wrench to unlock the camera and adjust its direction.





After adjustment, twist the screws back to lock the camera.

## Troubleshooting

### IP Camera Is Not Powering on

If you find your camera is not powering on, try the following solutions:

- Please check whether the outlet is working properly or not. Try to plug the camera into a different outlet and see if it works.
- Please check whether the DC adapter is working or not. If you have another 12V DC power adapter which is working, please use another power adapter and see if it works.

If these won't work, please contact Reolink Support [support@reolink.com](mailto:support@reolink.com)

### IR LEDs Stop Working

If you find the IR LEDs of your camera stop working, try the following solutions:

- Go to Device Settings and check whether you have enabled Infrared LEDs. If the LEDs are disabled, please enable them.
- Please go to Live View and check the Day/Night mode. Set the mode to Auto to activate the IR lights.
- Upgrade your camera's firmware to the latest version.
- Restore the camera to the factory settings and check the IR light settings again.

If these won't work, please contact Reolink Support [support@reolink.com](mailto:support@reolink.com)

## Specifications

### Hardware Features

IR Distance: 30 meters (100ft)  
Day/Night Mode: Auto switchover

### General

Operating Temperature: -10°C to 55°C (14°F to 131°F)  
Operating Humidity: 10%-90%  
Weather Resistance: IP66 certified weatherproof

## Notification of Compliance

### FCC Compliance Statement

This device complies with Part 15 of FCC Rules. Operation is subject to the following two conditions: (1) this device may not cause harmful interference, and (2) this device must accept any interference received, including interference that may cause undesired operation. For more information, visit: <https://reolink.com/fcc-compliance-notice/>.

## **Simplified EU Declaration of Conformity**

Reolink declares that this device is in compliance with the essential requirements and other relevant provisions of Directive 2014/53/EU.

## **Correct Disposal of This Product**

This marking indicates that this product should not be disposed with other household wastes throughout the EU. To prevent possible harm to the environment or human health from uncontrolled waste disposal, recycle it responsibly to promote the sustainable reuse of material resources. To return your used device, please use the return and collection systems or contact the retailer where the product was purchased. They can take this product for environmentally safe recycling.

## **Limited Warranty**

This product comes with a 2-year limited warranty that is valid only if purchased from Reolink Official Store or Reolink authorized resellers. Learn more: <https://reolink.com/warranty-and-return/>.

**Note:** We hope that you enjoy the new purchase. But if you are not satisfied with the product and plan to return, we strongly suggest that you reset the camera to factory default settings and take out the inserted SD card before returning.

## **Terms and Privacy**

Use of the product is subject to your agreement to the Terms of Service and Privacy Policy at reolink.com. Keep out of the reach of children.

## **End User License Agreement**

By using the Product Software that is embedded on the Reolink product, you agree to the terms of this End User License Agreement ("EULA") between you and Reolink. Learn more: <https://reolink.com/eula/>.

## **ISED Radiation Exposure Statement**

This equipment complies with RSS-102 radiation exposure limits set forth for an uncontrolled environment. This equipment should be installed and operated with minimum distance 20cm between the radiator & your body.


## **OPERATING FREQUENCY**

(the maximum transmitted power)

- 2412MHz-2472MHz (17dBm)
- 2412MHz-2472MHz (19dBm)
- 5180 MHz-5320 MHz (18dBm)
- 5745 MHz-5825 MHz (18dBm)



## Documents / Resources

	<a href="#">reolink RLC-410W-4MP Wifi IP Camera</a> [pdf] Instruction Manual RLC-410W-4MP, Wifi IP Camera
---	--

Manuals+.