



**Contents** [ [hide](#) ]

- [1 RLA-CM1 Reolink Chime](#)
- [2 Product Using Instructions](#)
- [3 Device Overview](#)
- [4 Set up the Chime](#)
- [5 How to Use the Chime](#)
- [6 Specification](#)
- [7 FCC Statement](#)
- [8 Warranty](#)
- [9 CONTACT](#)
- [10 FAQ](#)
- [11 Documents / Resources](#)
  - [11.1 References](#)



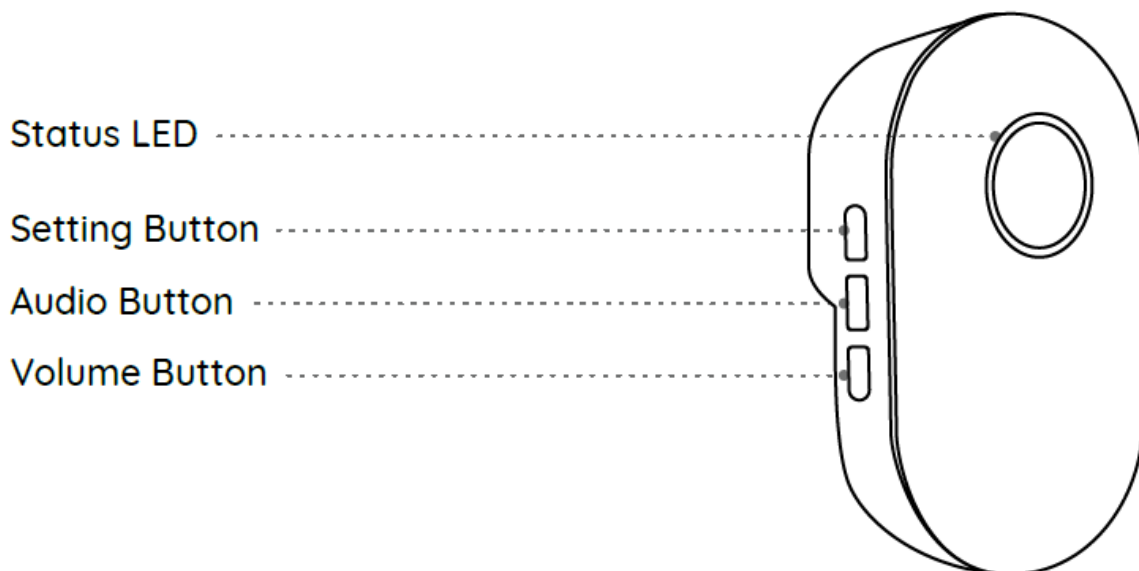
## RLA-CM1 Reolink Chime



## Product Using Instructions

- Plug the chime into the socket and power it on.
- Long-press the setting button on the side of the chime until it beeps twice and the light turns blue.
- Open the Reolink App, navigate to the doorbell settings, select Chime, click the + icon, and choose the Chime to pair.
- Press the doorbell's button and wait for the chime to light up and emit a sound to confirm pairing.
- Continuously press and hold the volume button while powering on the chime.
- The chime has been successfully reset when you hear 10 slower beeps followed by 4 faster beeps.

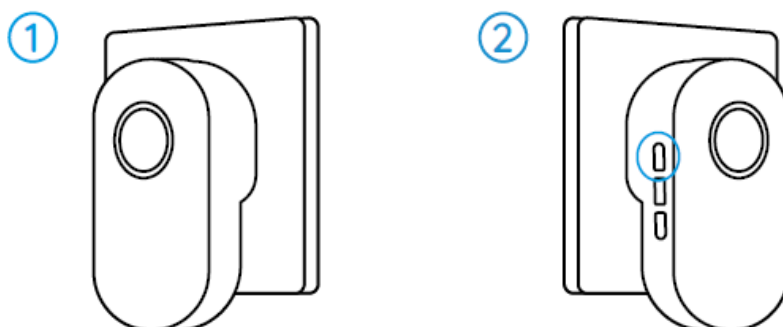
## Device Overview



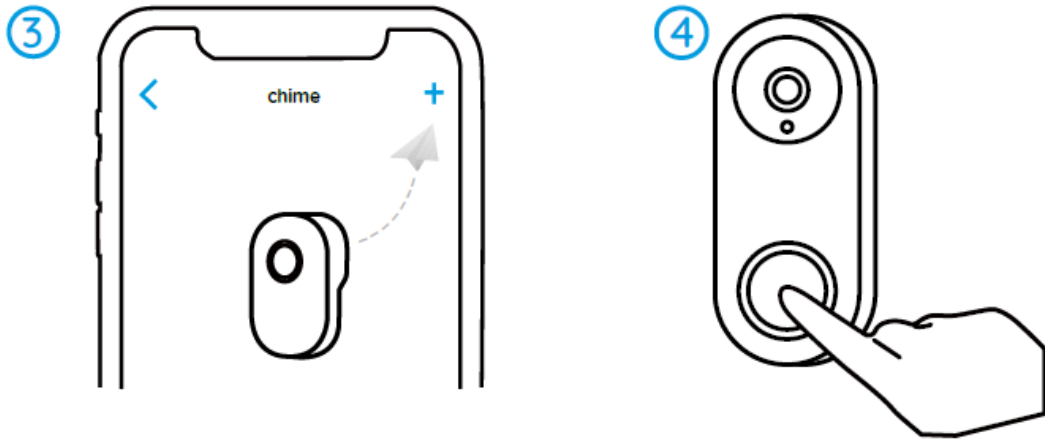
**Note:** Reolink Chime is compatible with Reolink doorbells only.

## Set up the Chime

- **Step 1:** Plug the chime into the socket and power it on.
- **Step 2:** Long-press the setting button on the side of the chime, then the chime will beep twice, and the light will illuminate blue.



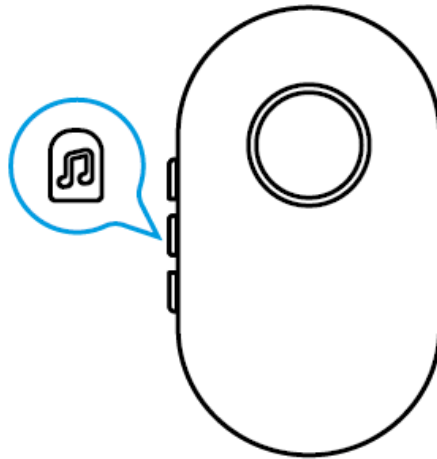
- **Step 3:** Open the Reolink App, navigate to the settings page of the doorbell, and select Chime. Then, click the “+” icon in the top right corner and choose the Chime you want to pair.
- **Note:** One doorbell can be paired with multiple chimes. If your doorbell needs to be paired with multiple chimes (up to 5), please repeat the pairing process for the additional chimes.
- One chime can only be paired with one doorbell.
- **Step4:** Once pairing is complete, press the doorbell’s button and wait for the chime to light up and emit a sound.



## How to Use the Chime

### Set the Audio

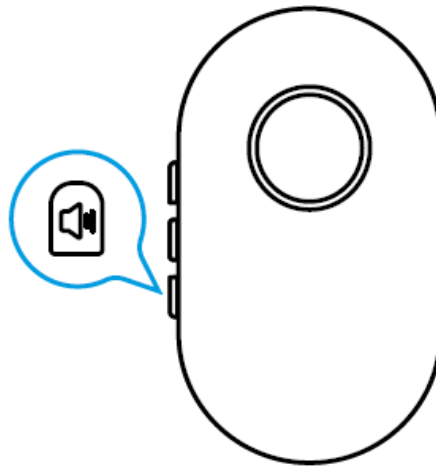
- Press the audio button to change the chime audio.



### Set the Volume

Press the volume button to set the volume of the chime. Volume Levels: mute, low, moderate, loud, very loud.

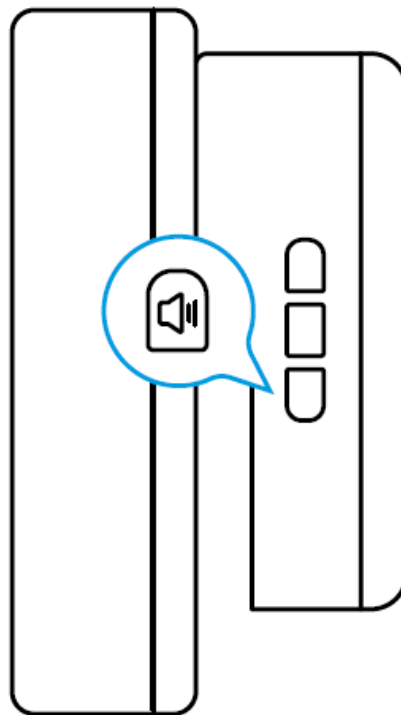
- When the volume is set to “low” or “very loud”, you will hear two beeps.
- When the volume is set to “mute”, the chime will only flash.



## Reset the Chime

1. Power off the chime.
2. Continuously press and hold the volume button while powering on the chime.

Once you hear 10 slower beeps followed by 4 faster beeps, the chime has been successfully reset.



## Specification

### Hardware Features

- Input: 100-240VAC, 50-60Hz
- Number of Audios: 10
- Volume Levels: 5 levels (0- 100 dB)

## **General**

- Operating Temperature: -20°C to 55°C (-4°F to 131°F)
- Operating Humidity: 20%-85%

## **FCC Statement**

### **Notification of Compliance**

This device complies with Part 15 of the FCC Rules. Operation is subject to the following two conditions: this device may not cause harmful interference, and this device must accept any interference received, including interference that may cause undesired operation.

**NOTE:** This equipment has been tested and found to comply with the limits for a Class B digital device, according to part 15 of the FCC Rules.

These limits are designed to provide reasonable protection against harmful interference in a residential installation. This equipment generates uses and can radiate radio frequency energy and, if not installed and used under the instructions, may cause harmful interference to radio communications. However, there is no guarantee that interference will not occur in a particular installation. If this equipment does cause harmful interference to radio or television reception, which can be determined by turning the equipment off and on, the user is encouraged to try to correct the interference by one or more of the following measures:

- Reorient or relocate the receiving antenna.
- Increase the separation between the equipment and receiver.
- Connect the equipment to an outlet on a circuit different from that to which the receiver is connected.
- Consult the dealer or an experienced radio/TV technician for help.

Changes or modifications not expressly approved by the party responsible for compliance could void the user's authority to operate the equipment.

### **FCC RF Exposure Warning Statements**

- This equipment complies with FCC radiation exposure limits set forth for an

uncontrolled environment.

- This equipment shall be installed and operated with a minimum distance of 20cm between the radiator & body.

### **Simplified EU Declaration of Conformity**

- Reolink declares that the WiFi camera complies with the essential requirements and other relevant provisions of Directive 2014/53/EU, and the PoE camera complies with Directive 2014/30/EU.



### **Correct Disposal of This Product**

This marking indicates that this product should not be disposed of with other household wastes. throughout the EU. To prevent possible harm to the environment or human health from uncontrolled waste disposal, recycle it responsibly to promote the sustainable reuse of material resources. To return your used device, please use the return and collection systems or contact the retailer where the product was purchased. They can take this product for environmentally safe recycling.



### **Warranty**

#### **Limited Warranty**

- This product comes with a 2-year limited warranty that is valid only if purchased from the Reolink Official Store or a Reolink authorized reseller. Learn more: <https://reolink.com/warranty-and-return/>.

**NOTE:** We hope that you enjoy the new purchase. But if you are not satisfied with the product and plan to return it, we strongly suggest that you reset the camera to factory default settings before returning.

### **Terms and Privacy**

- Use of the product is subject to your agreement to the Terms of Service and Privacy Policy at [reolink.com](https://reolink.com). Keep out of reach of children.

## **End User License Agreement**

- By using the Product Software that is embedded on the Reolink product, you agree to the terms of this End User License Agreement (“EULA”) between you and Reolink.
- Learn more: <https://reolink.com/eula>.

## **ISED Statements**

This device contains licence-exempt transmitter(s)/receiver(s) that comply with Innovation, Science and Economic Development Canada’s licence-exempt RSS(s). Operation is subject to the following two conditions:

1. This device may not cause interference.
2. This device must accept any interference, including interference that may cause undesired operation of the device.

## **Radio Frequency Exposure Statement for IC**

- The device has been evaluated to meet general RF exposure requirements.
- The device can be used in mobile exposure conditions.
- The min separation distance is 20cm.

## **Technical Support**

- If you need any technical help, please visit our official support site and contact our support team before returning the products: <https://support.reolink.com>.

## **CONTACT**

- REOLINK INNOVATION LIMITED
- FLAT/RM 705 7/F FA YUEN COMMERCIAL
- BUILDING 75-77 FA YUEN
- STREET MONG KOK KL HONG KONG
- CET PRODUCT SERVICE SP. Z O.O. Ul. Długa 33 102 Zgierz, Polen CET PRODUCT SERVICE LTD.
- Beacon House Stokenchurch Business Park, Ibstone Rd, Stokenchurch High Wycombe, HP14 3FE, UK
- <https://reolink.com>



# FAQ


- **Q: Is the Reolink Chime compatible with all doorbells?**
  - **A:** No, the Reolink Chime is only compatible with Reolink doorbells.
- **Q: How many chimes can be paired with one doorbell?**
  - **A:** One doorbell can be paired with multiple chimes, up to 5. Each chime can only be paired with one doorbell.
- **Q: What is the warranty period for the Reolink Chime?**
  - **A:** The product comes with a 2-year limited warranty if purchased from the Reolink Official Store or an authorized reseller.


# Documents / Resources

	<a href="#">reolink RLA-CM1 Reolink Chime [pdf]</a> Instruction Manual RLA-CM1 Reolink Chime, RLA-CM1, Reolink Chime, Chime
---	--

# References

- [User Manual](#)

 Chime, reolink, Reolink Chime, RLA-CM1, RLA-CM1 Reolink

 reolink Chime

# Leave a comment

Your email address will not be published. Required fields are marked \*

Comment \*

Name

Email

Website

☐ Save my name, email, and website in this browser for the next time I comment.

**Post Comment**

**Search:**

e.g. whirlpool wrf535swhz

**Search**

[Manuals+](#) | [Upload](#) | [Deep Search](#) | [Privacy Policy](#) | [@manuals.plus](#) | [YouTube](#)

This website is an independent publication and is neither affiliated with nor endorsed by any of the trademark owners. The "Bluetooth®" word mark and logos are registered trademarks owned by Bluetooth SIG, Inc. The "Wi-Fi®" word mark and logos are registered trademarks owned by the Wi-Fi Alliance. Any use of these marks on this website does not imply any affiliation with or endorsement.