



reolink QG4_A PoE IP Camera Quick Start Guide

[Home](#) » [reolink](#) » reolink QG4_A PoE IP Camera Quick Start Guide 

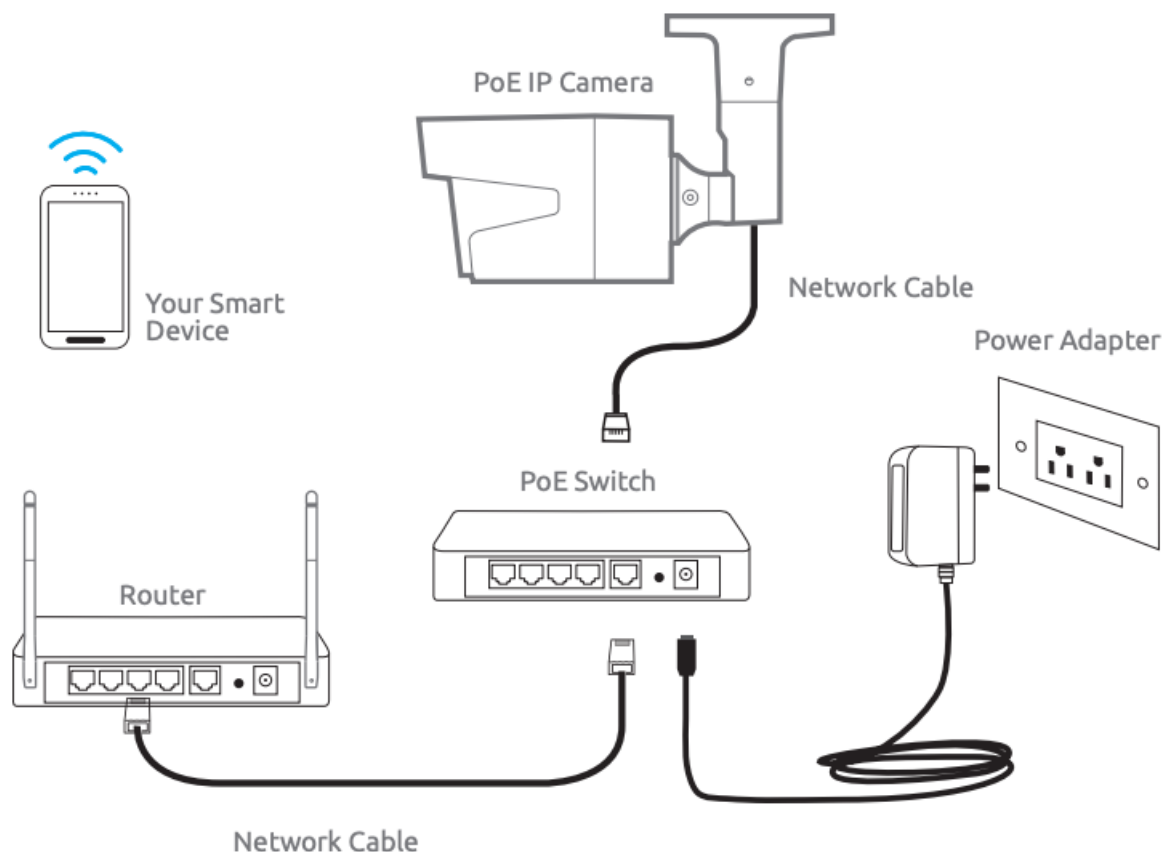
Contents

- [1 reolink QG4_A PoE IP Camera Quick Start Guide](#)
 - [1.1 01. Access the Camera by Smartphones](#)
 - [1.1.1 Camera Connection Diagram](#)
 - [1.1.2 Install Reolink App](#)
 - [1.1.3 Add the Device](#)
 - [1.2 02. Access the Camera by Computer](#)
 - [1.2.1 Install Reolink Client](#)
 - [1.2.2 Start Live View](#)
 - [1.2.3 Add the Device](#)
- [2 Related Posts](#)

reolink QG4_A PoE IP Camera Quick Start Guide

01. Access the Camera by Smartphones

Camera Connection Diagram



For initial setup, please connect the camera to your router LAN port with an Ethernet cable, and then follow the steps below to set up your camera. Make sure that your camera and your smart devices are in the same network.

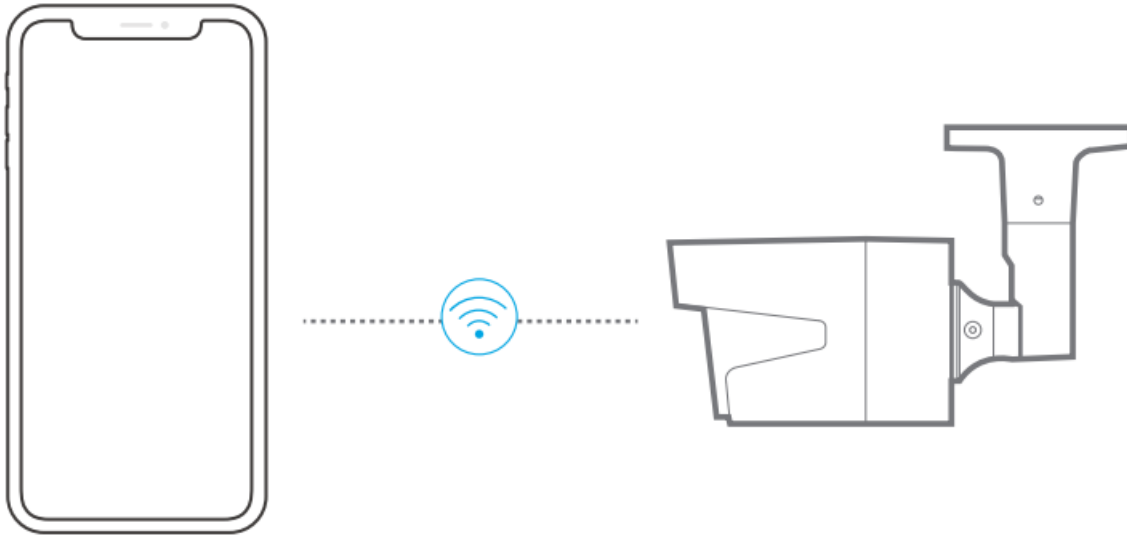
Install Reolink App

There are two ways to get the Reolink App:

1. Search "Reolink" in App Store (for iOS), or Google Play (for Android), download and install the app.
2. Scan the QR code below to download and install the app.



Add the Device



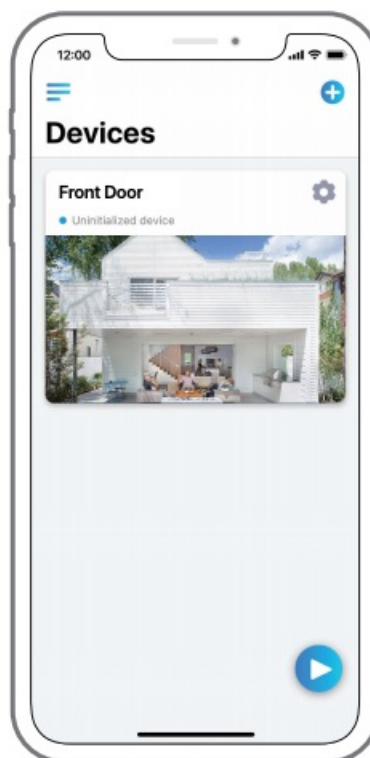
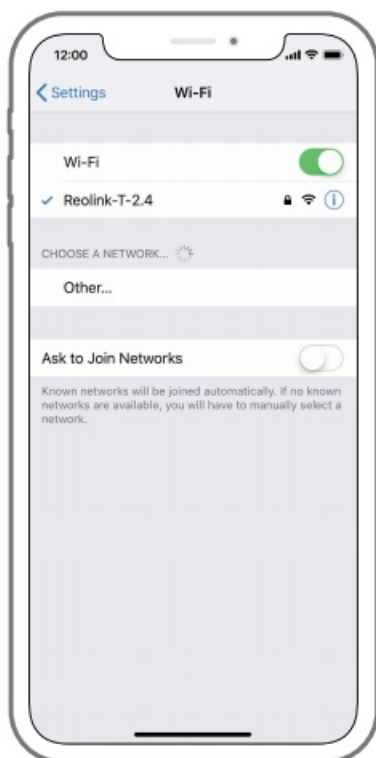
1. When in LAN (Local Area Network)

The camera will be automatically added.

2. When in WAN (Wide Area Network)

You need to add the camera either by scanning the QR code on the camera or by entering the UID number manually

1 In LAN



1. Connect your smartphone to the WiFi network of your router.
2. Launch Reolink App. The camera will automatically display in the camera list in LAN.

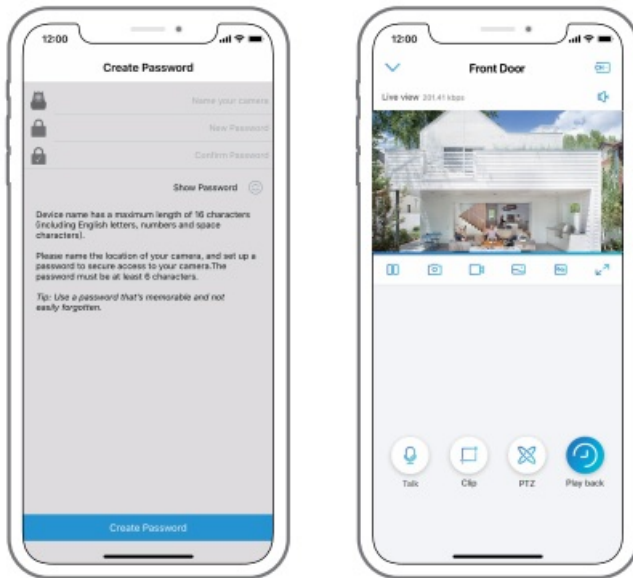


3. Tap screen to sync the time and create your password.
4. Start live view or go to "Device Settings" for more configurations.

② In WAN



1. click '+' on the up right corner
2. Scan the QR code on the camera, and then tap "Login". (There is no password at the factory default status.)



3. Name your camera, create a password, and then start live view.



This icon only displays if the camera supports 2-way audio.

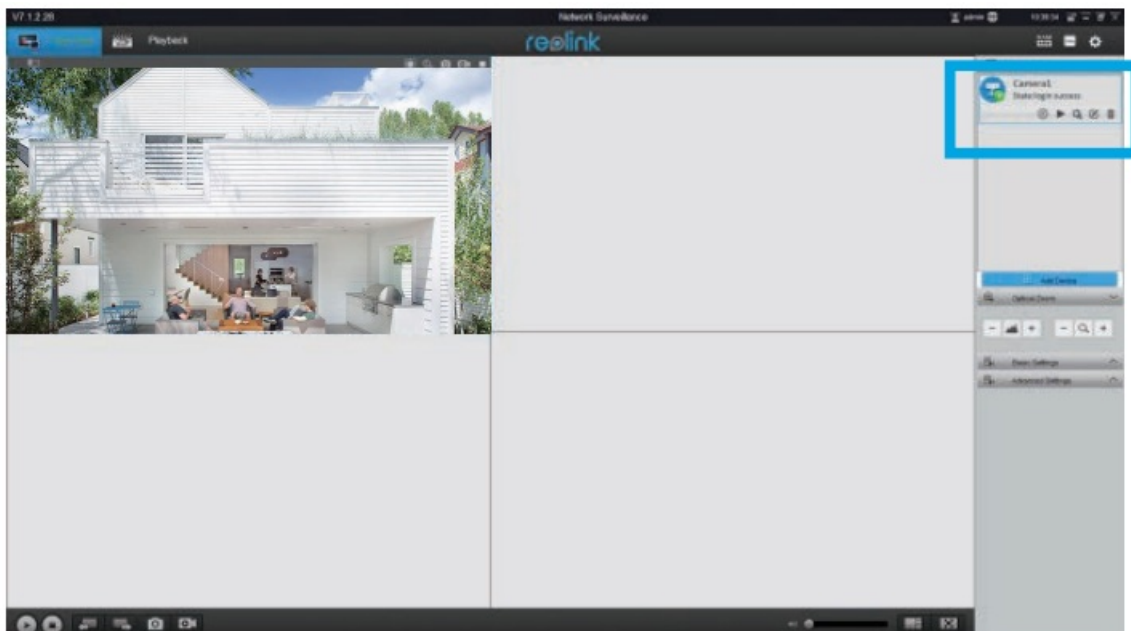


This icon only displays if the camera supports pan & tilt (zoom).

02. Access the Camera by Computer

Install Reolink Client

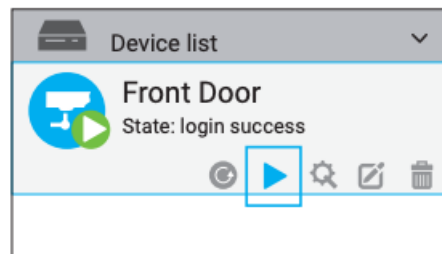
Please install the client software from the recourse CD or download it from our official **website**: <https://reolink.com/software-and-manual>.



Start Live View

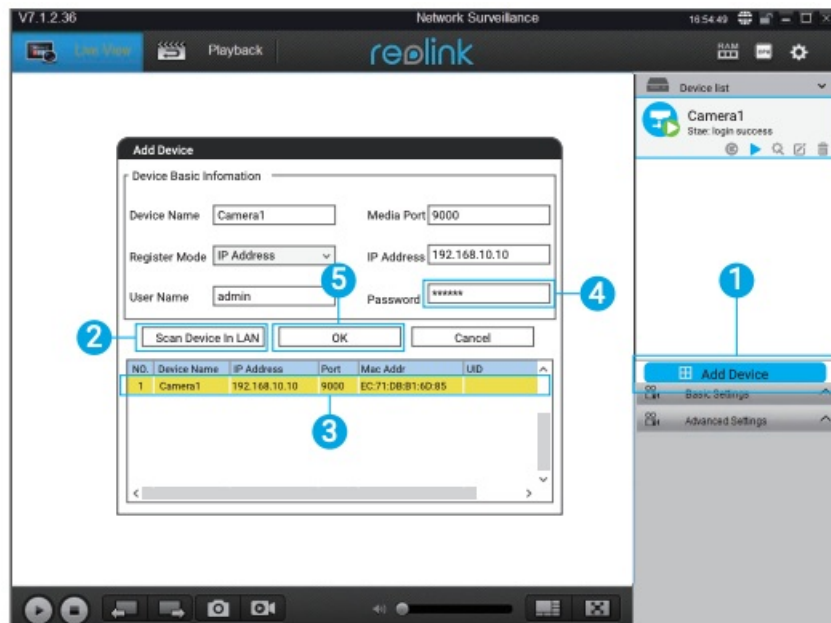
Launch the Reolink Client software on the PC. By default, the client software will automatically search the cameras in your LAN network and display them in the “Device List” on the right-side menu.

Click the “Start” button, and you can view the live streaming now.



Add the Device

Alternatively, you can manually add the camera to the client. Please follow the steps below.



1. Click “Add Device” on the right-side menu.
2. Click “Scan Device in LAN”.
3. Double click on the camera you want to add. The information will be filled in automatically.
4. Input the password for the camera. The default password is blank. If you have created the password on Reolink App, you need to use the password to log in.
5. Click “OK” to log in.

reolink QG4_A PoE IP Camera Quick Start Guide – [Download \[optimized\]](#)
reolink QG4_A PoE IP Camera Quick Start Guide – [Download](#)