

reolink
QSG1_A WiFi PoE
Floodlight



reolink QSG1_A WiFi PoE Floodlight User Guide

[Home](#) » [reolink](#) » reolink QSG1_A WiFi PoE Floodlight User Guide 

Contents

- [1 reolink QSG1_A WiFi PoE Floodlight](#)
- [2 Product Usage Instructions](#)
- [3 What's in the Box](#)
- [4 Floodlight Introduction](#)
- [5 Set up the Floodlight](#)
- [6 Install the Floodlight](#)
- [7 Troubleshooting](#)
- [8 Specification](#)
- [9 FCC Statement](#)
- [10 Warranty](#)
- [11 Technical Support](#)
- [12 FAQ](#)
- [13 Documents / Resources](#)
 - [13.1 References](#)
- [14 Related Posts](#)



reolink QSG1_A WiFi PoE Floodlight



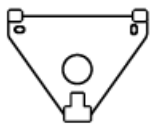
Product Usage Instructions

- The Floodlight features components such as a Speaker, Daylight Sensor, PIR Sensor, Status LED, LAN Port, Reset Button, and Power Port.
- Download and launch the Reolink App or Client software.
- Follow the onscreen instructions to finish the initial setup.
- Mounting Height: 2-3 Meters
- PIR Detection Distance: 2-10 Meters
- If a moving object approaches the PIR sensor vertically, motion detection may fail.
- Drill holes according to the mounting template.
- Secure the mounting plate to the wall with screws.
- Hang the floodlight on it and lock it in position with a screw.

What's in the Box



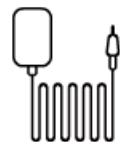
Floodlight



Mounting Plate



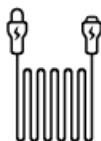
Mounting Hole
Template



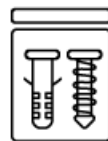
Power Adapter *



1m
Ethernet Cable



4.5m Power *
Extension Cable



Pack of Screws



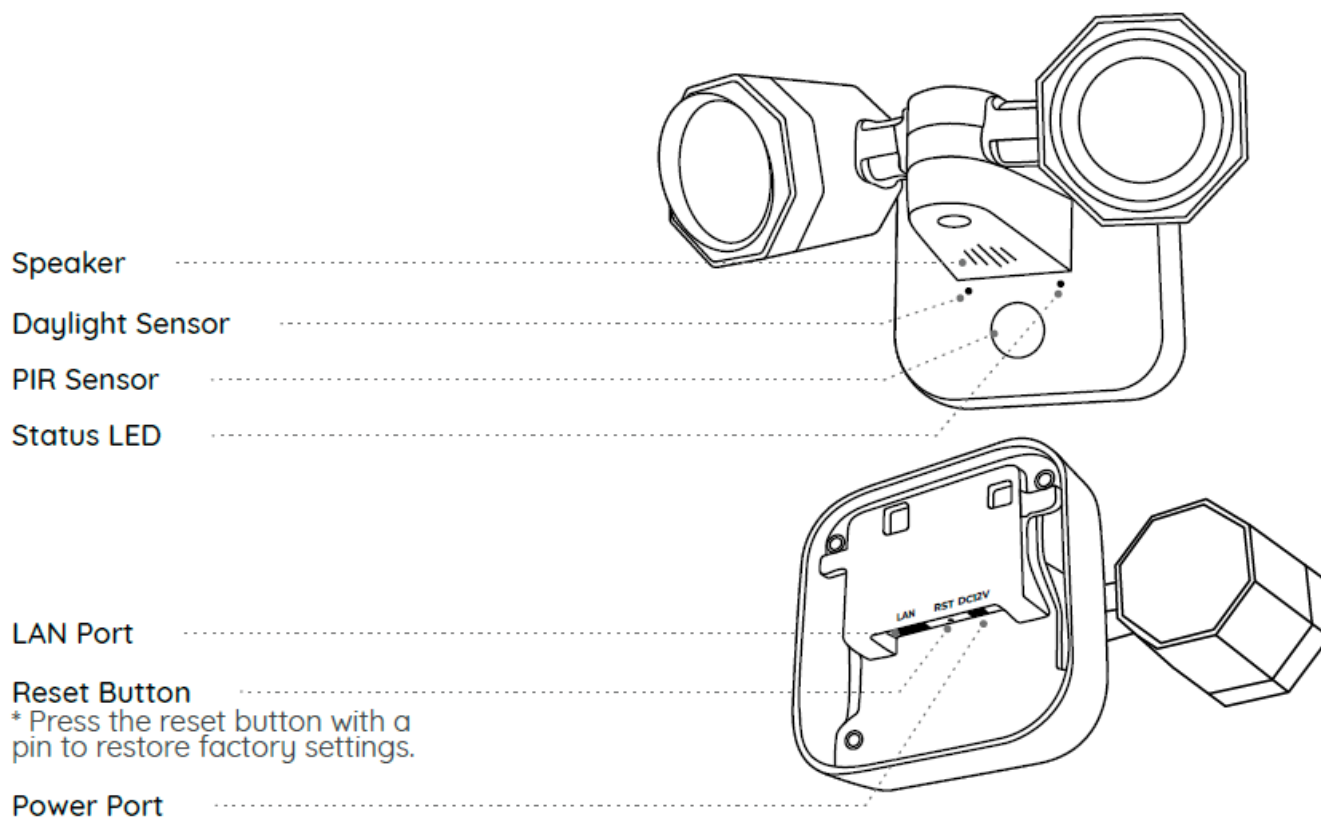
Quick Start Guide

NOTE

- The power adapter and 4.5m Power Extension Cable only come with WiFi Version.
- The quantity of accessories varies with the product model you purchase.

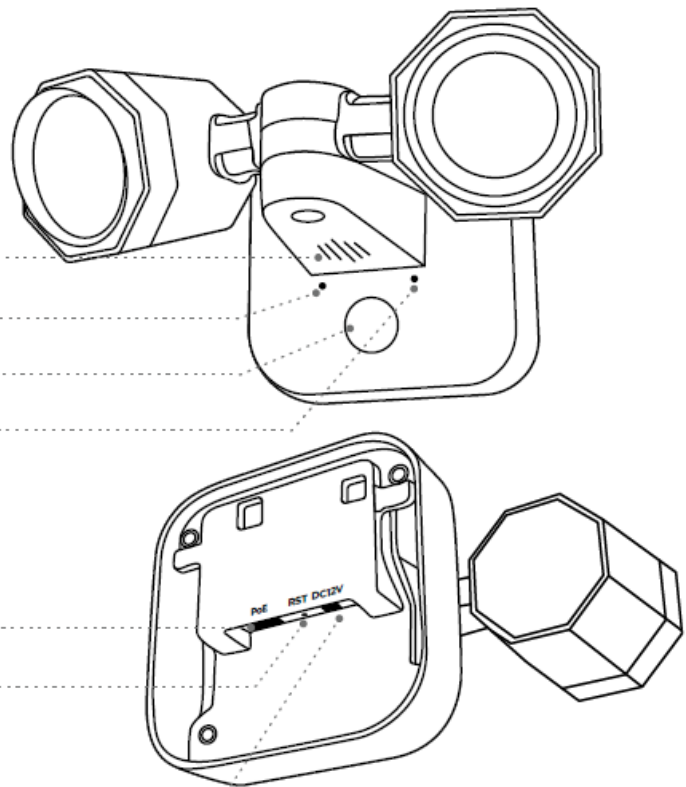
Floodlight Introduction

WiFi Version



PoE Version

Speaker
Daylight Sensor
PIR Sensor
Status LED



PoE Port
Reset Button
* Press the reset button with a
pin to restore factory settings.
Power Port

Set up the Floodlight

Download and launch the Reolink App or Client software, and follow the onscreen instructions to finish the initial setup.

On Smartphone

- Scan to download the Reolink App.



On PC

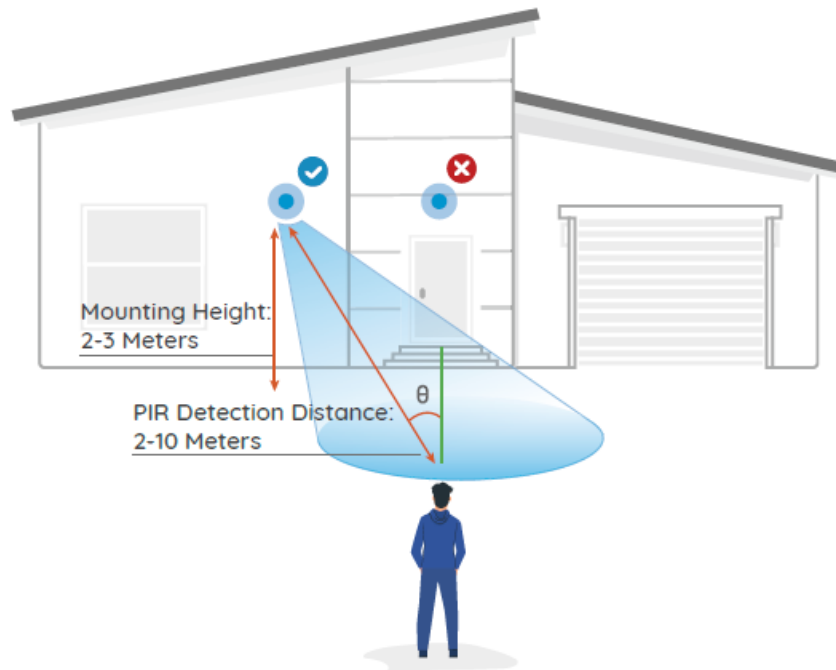
- Download the path of the Reolink Client: Go to <https://reolink.com> > Support > App & Client.

NOTE

- When setting up the WiFi Floodlight, you need to follow the onscreen instructions to finish the WiFi configuration first.
- If you are connecting the PoE Floodlight to a Reolink PoE NVR, please set up the Floodlight via the NVR interface.

Install the Floodlight

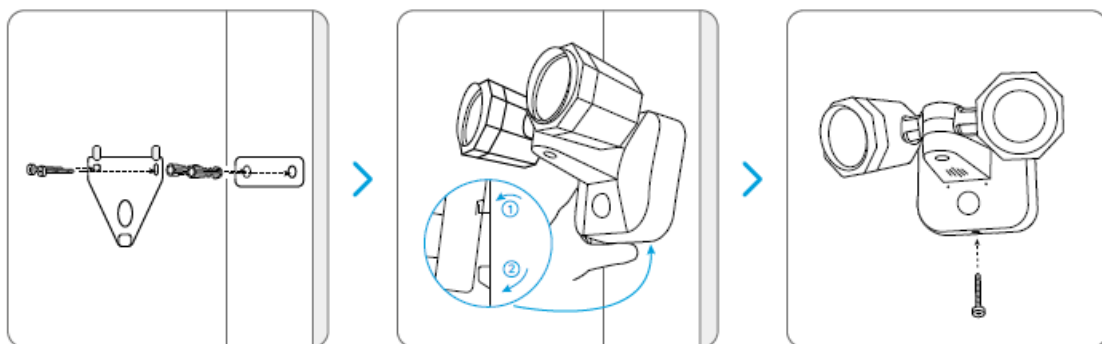
- Install the Floodlight 2-3 meters (7-10 ft) above the ground. This height maximizes the detection range of the PIR motion sensor.
- For better motion detection performance, please install the floodlight angularly.



NOTE: If a moving object approaches the PIR sensor vertically, the floodlight may fail to detect motion.

Mount the Floodlight to the Wall

1. Drill holes in accordance with the mounting template.
2. Secure the mounting plate to the wall with the upper two screws and hang the floodlight on it.
3. Then lock the floodlight in position with the lower screw.



Troubleshooting

The floodlight is not powering on

- If your Floodlight is not powering on, please try the following solutions:

For PoE Floodlight

- Make sure your Floodlight is powered on properly. The PoE Floodlight should be powered by a PoE switch/injector, a Reolink NVR or a 12V power adapter.
- If the floodlight is connected to a PoE device as listed above, connect it to another PoE port and check again.
- Try again with another Ethernet cable.

For WiFi Floodlight

- Plug the floodlight into a different outlet and see if it works.
- Power on the floodlight with another working 12V 2A DC adapter and see if it works.

If the problem is not solved, please contact Reolink Support.

Specification

Hardware Features

- Light: 40pcs/18W
- Dimension: 216X118X160mm
- Weight: 635g
- Working Temperature: -10°C~+55°C (14°F~131°F)

FCC Statement

Notification of Compliance

This device complies with Part 15 of the FCC Rules. Operation is subject to the following two conditions: this device may not cause harmful interference, and this device must accept any interference received, including interference that may cause undesired operation.

NOTE: This equipment has been tested and found to comply with the limits for a Class B digital device, according to part 15 of the FCC Rules.

These limits are designed to provide reasonable protection against harmful interference in a residential installation. This equipment generates uses and can radiate radio frequency energy and, if not installed and used under the instructions, may cause harmful interference to radio communications. However, there is no guarantee that interference will not occur in a particular installation. If this equipment does cause harmful interference to radio or television reception, which can be determined by turning the equipment off and on, the user is encouraged to try to correct the interference by one or more of the following measures:


- Reorient or relocate the receiving antenna.
- Increase the separation between the equipment and the receiver.
- Connect the equipment to an outlet on a circuit different from that to which the receiver is connected.
- Consult the dealer or an experienced radio/ TV technician for help.

Changes or modifications not expressly approved by the party responsible for compliance could void the user's authority to operate the equipment.

FCC RF Exposure Warning Statements

- This equipment complies with FCC radiation exposure limits set forth for an uncontrolled environment. This equipment shall be installed and operated with a minimum distance 20cm between the radiator & body.

Simplified EU Declaration of Conformity

-  Reolink declares that the WiFi floodlight is in compliance with the essential requirements and other relevant provisions of Directive 2014/53/EU, and the PoE floodlight is in compliance with Directive 2014/30/EU.

Correct Disposal of This Product

This marking indicates that this product should not be disposed of with other household wastes. throughout the EU. To prevent possible harm to the environment or human health from uncontrolled waste disposal, recycle it responsibly to promote the sustainable reuse of material resources. To return your used device, please use the return and collection systems or contact the retailer where the product was purchased. They can take this product for environmentally safe recycling.



Warranty

Limited Warranty

- This product comes with a 2-year limited warranty that is valid only if purchased from the Reolink Official Store or a Reolink authorized reseller.
- Learn more: <https://reolink.com/warranty-and-return/>.

NOTE: We hope that you enjoy the new purchase. But if you are not satisfied with the product and plan to return, we strongly suggest that you reset the floodlight to factory default settings before returning.

Terms and Privacy

- Use of the product is subject to your agreement to the Terms of Service and Privacy Policy at reolink.com.
- Keep out of reach of children.

End User License Agreement

- By using the Product Software that is embedded on the Reolink product, you agree to the terms of this End User License Agreement (“EULA”) between you and Reolink.
- Learn more: <https://reolink.com/eula/>.

ISED Statements

- This device contains licence-exempt transmitter(s)/receiver (s) that comply with Innovation, Science, and Economic Development Canada’s license-exempt RSS(s).
- Operation is subject to the following two conditions:

1. This device may not cause interference.
2. This device must accept any interference, including interference that may cause undesired operation of the device.

Radio Frequency Exposure Statement for IC

The device has been evaluated to meet general RF exposure requirements. The device can be used in mobile exposure conditions.

The min separation distance is 20cm.

OPERATING FREQUENCY (For WiFi Version) (the maximum transmitted power)

- 2412MHz — 2472MHz (19dBm)


Technical Support

- If you need any technical help, please visit our official support site and contact our support team before returning the products: <https://support.reolink.com>.

FAQ

- **Why is my Floodlight not detecting motion properly?**
 - If a moving object approaches the PIR sensor vertically, the floodlight may fail to detect motion. Ensure proper mounting height and detection distance for optimal performance.
- **What should I do if my Floodlight is not powering on?**
 - If your Floodlight is not powering on, drill holes according to the mounting template, secure the mounting plate, hang the floodlight, and lock it in position. If the issue persists, contact Reolink Support.

Documents / Resources

	reolink QSG1_A WiFi PoE Floodlight [pdf] User Guide QSG1_A, QSG1_A WiFi PoE Floodlight, WiFi PoE Floodlight, PoE Floodlight, Floodlight
---	--

References

- [Reolink Official: Security Cameras and Systems for Home & Business](#)
- [Your Ultimate Resource for Millions of User Manuals](#)
- [Reolink Official: Security Cameras and Systems for Home & Business](#)
- reolink.com/warranty-and-return/
- [Reolink Support - Official Reolink Help Center](#)
- [User Manual](#)