



# Reolink Floodlight for PoE Security Camera System User Manual

[Home](#) » [reolink](#) » Reolink Floodlight for PoE Security Camera System User Manual 

## Contents

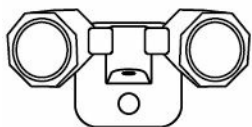
- [1 Reolink Floodlight for PoE Security Camera System](#)
- [2 What's in the Box](#)
- [3 Floodlight Introduction](#)
- [4 Set up the Floodlight](#)
- [5 Install the Floodlight](#)
- [6 Mount the Floodlight to the Wall](#)
- [7 Troubleshooting](#)
- [8 Specification](#)
- [9 FCC STATEMENT](#)
- [10 Limited Warranty](#)
- [11 Documents / Resources](#)
  - [11.1 References](#)



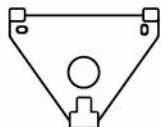
**Reolink Floodlight for PoE Security Camera System**



## What's in the Box



Floodlight



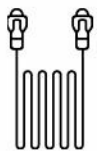
Mounting Plate



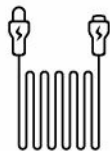
Mounting Hole  
Template



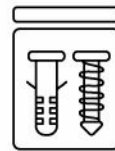
Power Adapter \*



1m  
Ethernet Cable



4.5m Power \*  
Extension Cable



Pack of Screws



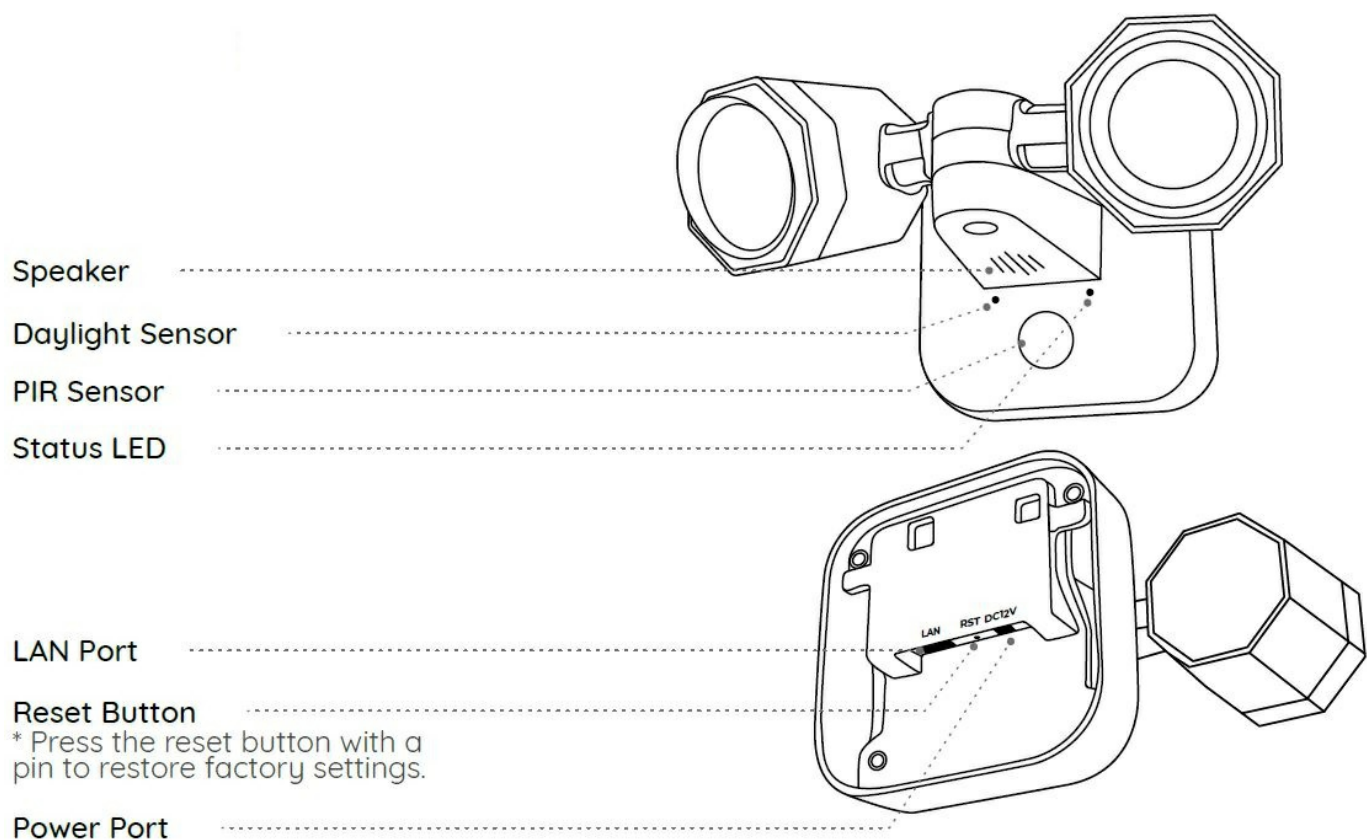
Quick Start Guide

## NOTE

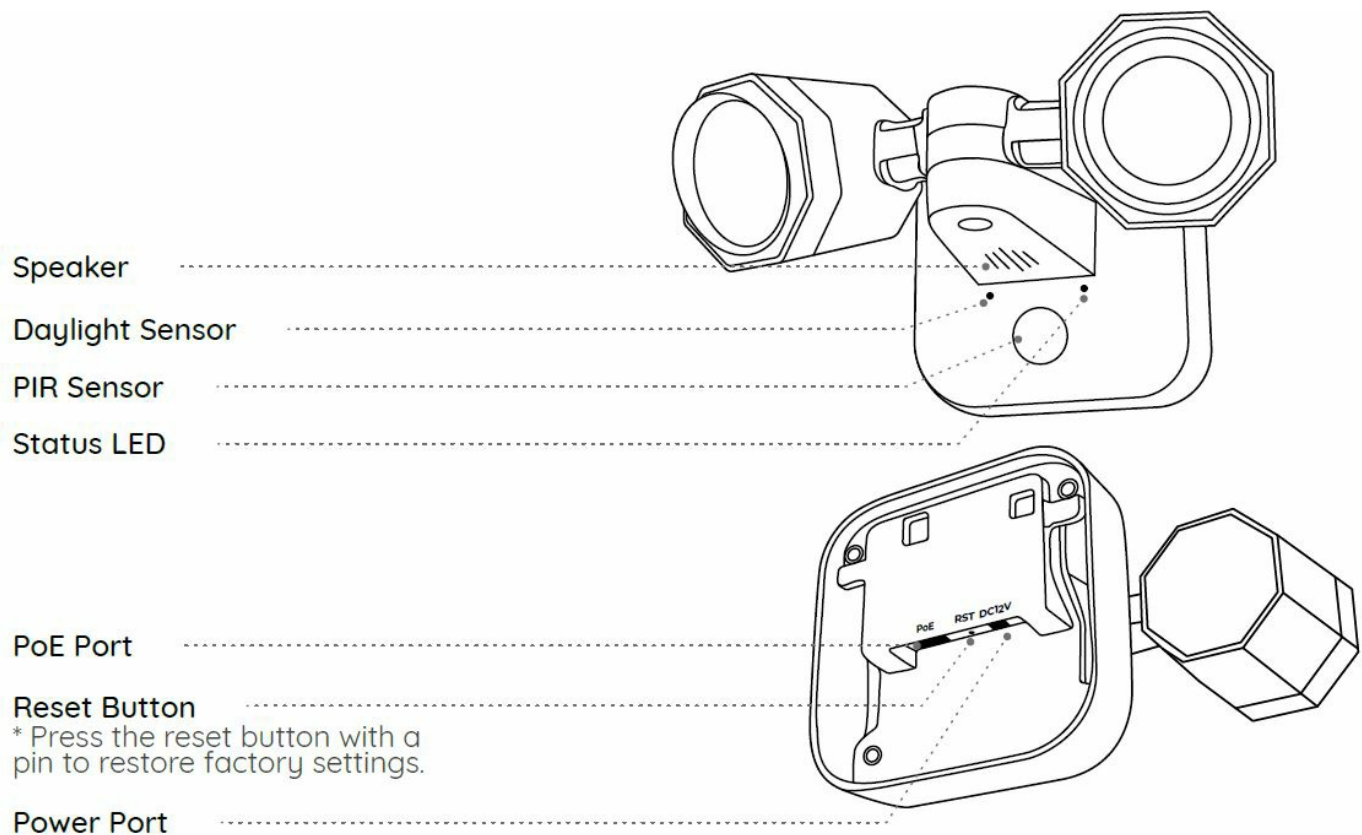
- The power adapter and 4.5m Power Extension Cable only come with WiFi Version.
- The quantity of accessories varies with the product model you purchase.

## Floodlight Introduction

## WiFi Version



## PoE Version



## Set up the Floodlight

- Download and launch the Reolink App or Client software, and follow the onscreen instructions to finish the

initial setup.

## On Smartphone

- Scan to download the Reolink App.



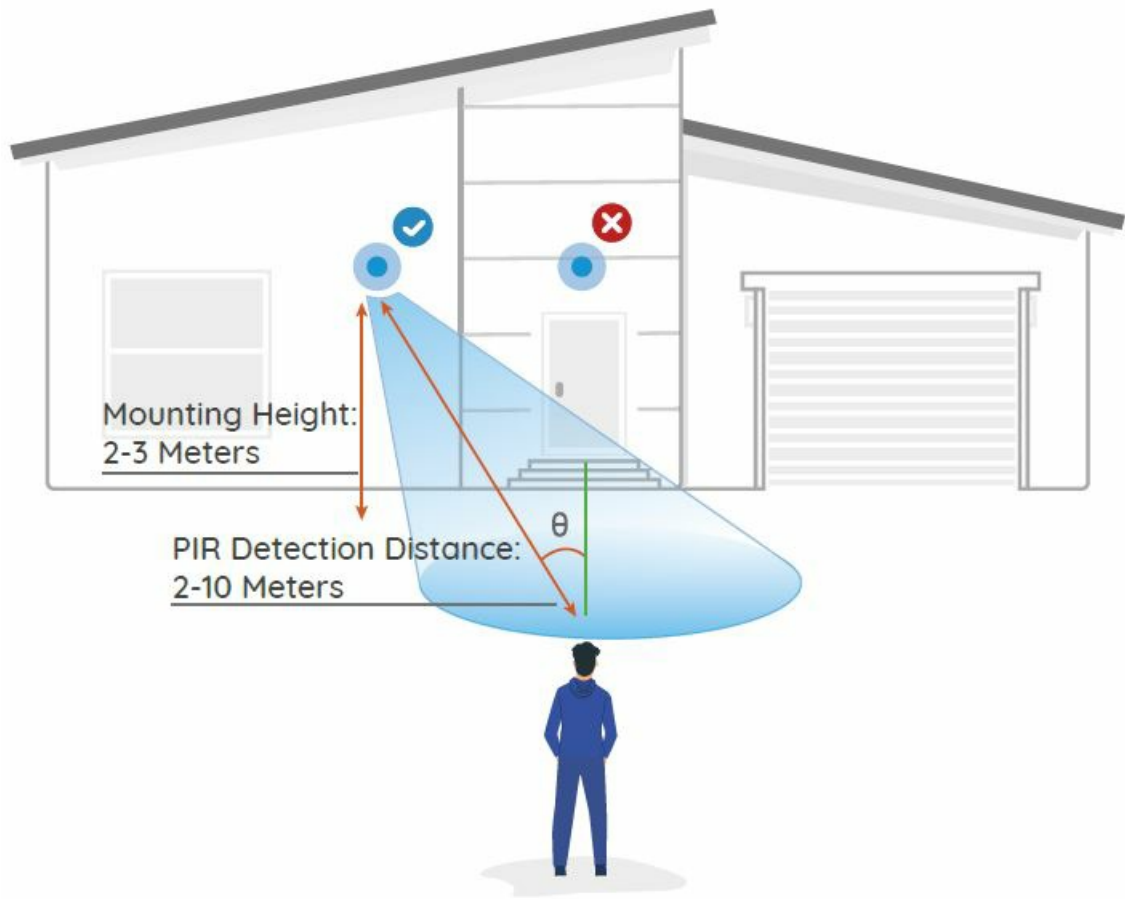
## NOTE

- When setting up the WiFi Floodlight, you need to follow the onscreen instructions to finish the WiFi configuration first.
- If you are connecting the PoE Floodlight to a Reolink PoE NVR, please set up the Floodlight via the NVR interface.

## Install the Floodlight

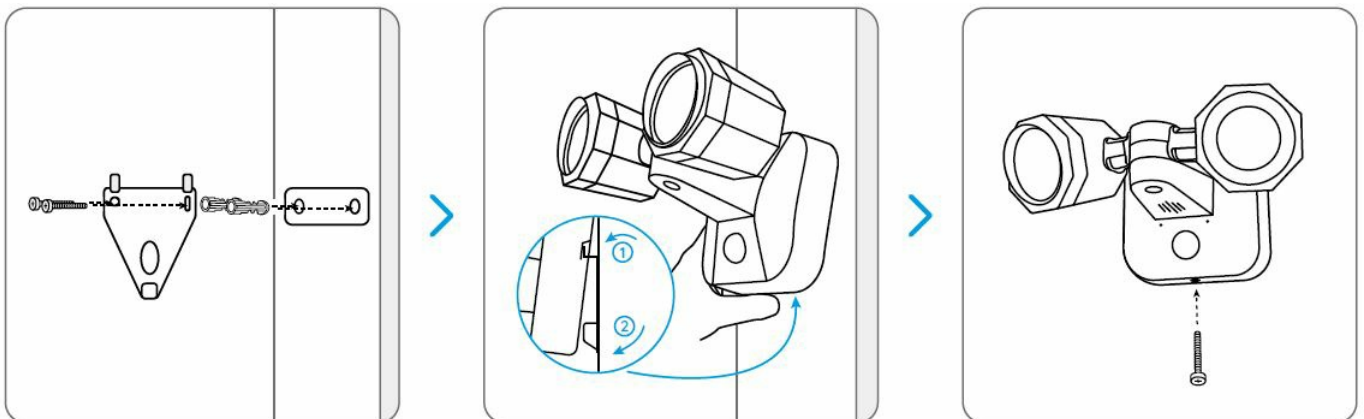
- Install the Floodlight 2-3 meters (7-10 ft) above the ground. This height maximizes the detection range of the PIR motion sensor.
- For better motion detection performance, please install the floodlight angularly.

**NOTE:** If a moving object approaches the PIR sensor vertically, the floodlight may fail to detect motion.



## Mount the Floodlight to the Wall

1. Drill holes under the mounting template.
2. Secure the mounting plate to the wall with the upper two screws and hang the floodlight on it.
3. Then lock the floodlight in position with the lower screw.



## Troubleshooting

### The floodlight is not powering on

- If your Floodlight is not powering on, please try the following solutions:

### For PoE Floodlight

- Make sure your Floodlight is powered on properly. The PoE Floodlight should be powered by a PoE switch/injector, a Reolink NVR or a 12V power adapter.
- If the floodlight is connected to a PoE device as listed above, connect it to another PoE port and check again.
- Try again with another Ethernet cable.

### **For WiFi Floodlight**

- Plug the floodlight into a different outlet and see if it works.
- Power on the floodlight with another working 12V 2A DC adapter and see if it works.

If the problem is not solved, please contact Reolink Support.

## **Specification**

### **Hardware Features**

- **Light:** 40pcs/18W
- **Dimension:** 216X118X160mm
- **Weight:** 635g
- **Working Temperature:** -10°C~+55°C (14°F~131°F)

### **Notification of Compliance**

## **FCC STATEMENT**

This device complies with Part 15 of the FCC Rules. Operation is subject to the following two conditions:

1. this device may not cause harmful interference, and
2. this device must accept any interference received, including interference that may cause undesired operation.

**NOTE:** This equipment has been tested and found to comply with the limits for a Class B digital device, according to part 15 of the FCC Rules.

These limits are designed to provide reasonable protection against harmful interference in a residential installation.

This equipment generates uses and can radiate radio frequency energy and, if not installed and used following the instructions, may cause harmful interference to radio communications. However, there is no guarantee that interference will not occur in a particular installation. If this equipment does cause harmful interference to radio or television reception, which can be determined by turning the equipment off and on, the user is encouraged to try to correct the interference by one or more of the following measures:

- Reorient or relocate the receiving antenna.
- Increase the separation between the equipment and the receiver.
- Connect the equipment to an outlet on a circuit different from that to which the receiver is connected.
- Consult the dealer or an experienced radio/TV technician for help.

Changes or modifications not expressly approved by the party responsible for compliance could void the user's authority to operate the equipment.

### **FCC RF Exposure Warning Statements**

This equipment complies with FCC radiation exposure limits set forth for an uncontrolled environment. This equipment shall be installed and operated with a minimum distance of 20cm between the radiator & body.

### **Simplified EU Declaration of Conformity**

•



Reolink declares that the WiFi floodlight complies with the essential requirements and other relevant provisions of Directive 2014/53/EU, and the PoE floodlight complies with Directive 2014/30/EU.

### **Correct Disposal of This Product**



- This marking indicates that this product should not be disposed of with other household wastes. throughout the EU.
- To prevent possible harm to the environment or human health from uncontrolled waste disposal, recycle it responsibly to promote the sustainable reuse of material resources.
- To return your used device, please use the return and collection systems or contact the retailer where the product was purchased.
- They can take this product for environmentally safe recycling.

### **Limited Warranty**

- This product comes with a 2-year limited warranty that is valid only if purchased from Reolink Official Store or a Reolink authorized reseller. Learn more:

**NOTE:** We hope that you enjoy the new purchase. But if you are not satisfied with the product and plan to return, we strongly suggest that you reset the floodlight to factory default settings before returning.

### **Terms and Privacy**

- Use of the product is subject to your agreement to the Terms of Service and Privacy Policy Keep out of reach of children.

### **End User License Agreement**

- By using the Product Software that is embedded in the Reolink product, you agree to the terms of this End User License Agreement ("EULA") between you and Reolink.

ISED Statements

- This device contains licence-exempt transmitter(s)/receiver (s) that comply with Innovation, Science and Economic Development Canada’s licence-exempt RSS(s). Operation is subject to the following two conditions:
  1. This device may not cause interference.
  2. This device must accept any interference, including interference that may cause undesired operation of the device.


Radio Frequency Exposure Statement for IC

- The device has been evaluated to meet general RF exposure requirements.
- The device can be used in mobile exposure conditions.
- The min separation distance is 20cm.

OPERATING FREQUENCY (For WiFi Version) (the maximum transmitted power)

- 2412MHz — 2472MHz (19dBm)

Documents / Resources

	<a href="#">Reolink Floodlight for PoE Security Camera System</a> [pdf] User Manual Floodlight for PoE Security Camera System, Floodlight for, PoE Security Camera System, Security Camera System, Camera System
---	---

References

- [User Manual](#)