



reolink E1 Wireless Security Camera User Manual

[Home](#) » [reolink](#) » reolink E1 Wireless Security Camera User Manual



E1 Outdoor Operational Instruction

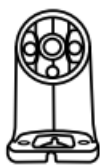
Contents [[hide](#)]

- 1 What's in the Box
- 2 Camera Introduction
- 3 Set up the Camera
- 4 Install the E1 Outdoor Camera
- 5 Troubleshooting
- 6 Specifications
- 7 Notification of Compliance
- 8 Documents / Resources
 - 8.1 References
- 9 Related Posts

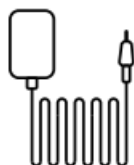
What's in the Box



Reolink E1 Outdoor



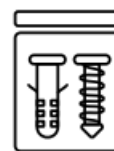
Camera Bracket



Power Adapter



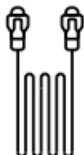
Reset Needle



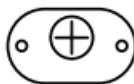
Pack of Screws



4.5m Power
Extension Cable



1m
Network Cable



Mounting
Template



Quick
Start Guide



Surveillance
Sign

Camera Introduction



Meaning of the Status LED:

Status/LED	Blinking	Solid
LED in Blue	WiFi connection failed	Camera is starting up
	WiFi is not configured	WiFi connection succeeded

Set up the Camera

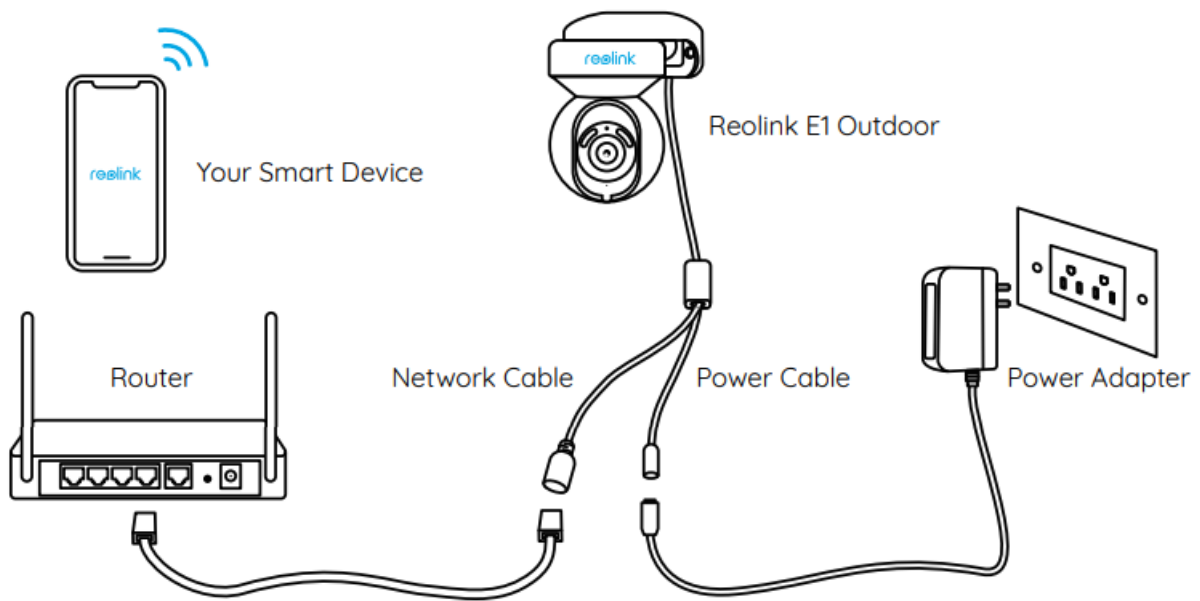
Wired Setup

It is recommended that the initial setup be completed with the Ethernet cable. You may follow the steps below to

set up your camera.

Step 1 Connect the camera to a LAN port on your router with an Ethernet cable.

Step 2 Use the power adapter provided to power on the camera.



Step 3 Download and launch the Reolink App or Client software, and follow the onscreen instructions to finish initial setup.

- **On Smartphone**

Scan to download the Reolink App.



<https://reolink.com/wp-json/reo-v2/app/download>


- **On PC**

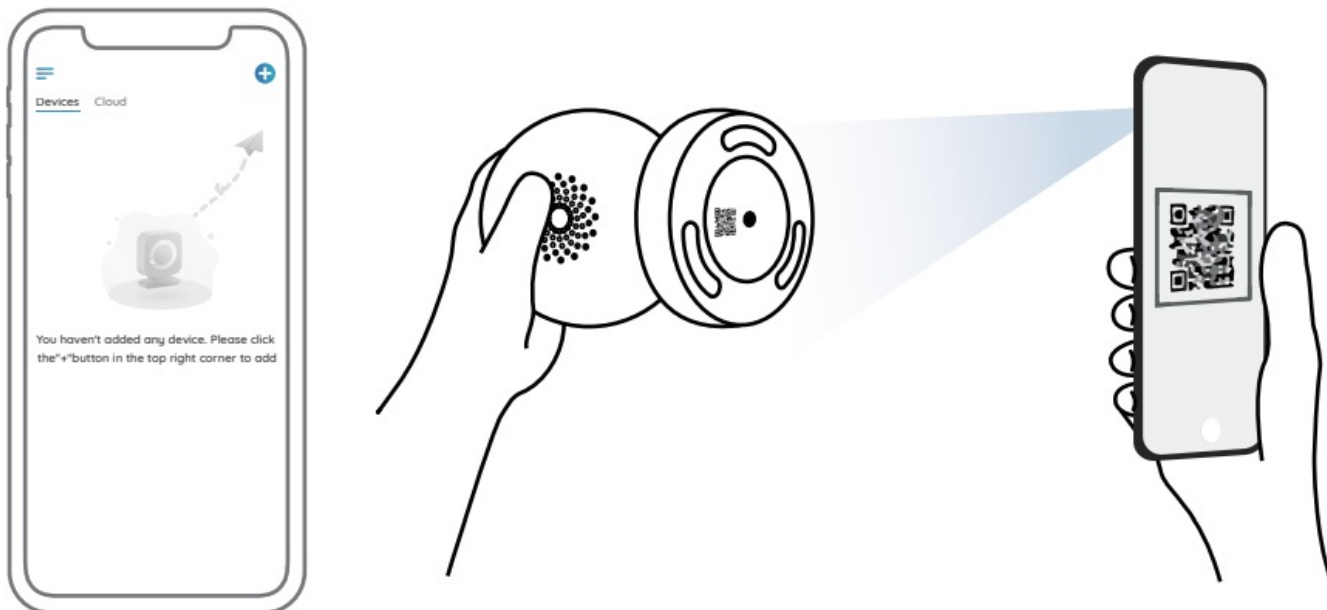
Download path of the Reolink Client: Go to <https://reolink.com>Support>App&Client>.

Wireless Setup

If you set up Reolink E1 Outdoor without the Ethernet cable, you may follow the steps below.

Step 1 Use the power adapter provided to power on the camera.

Step 2 Launch the Reolink App, click the “” button in the top right corner to add the camera. Scan the QR code on the device and follow the onscreen instructions to finish initial setup.

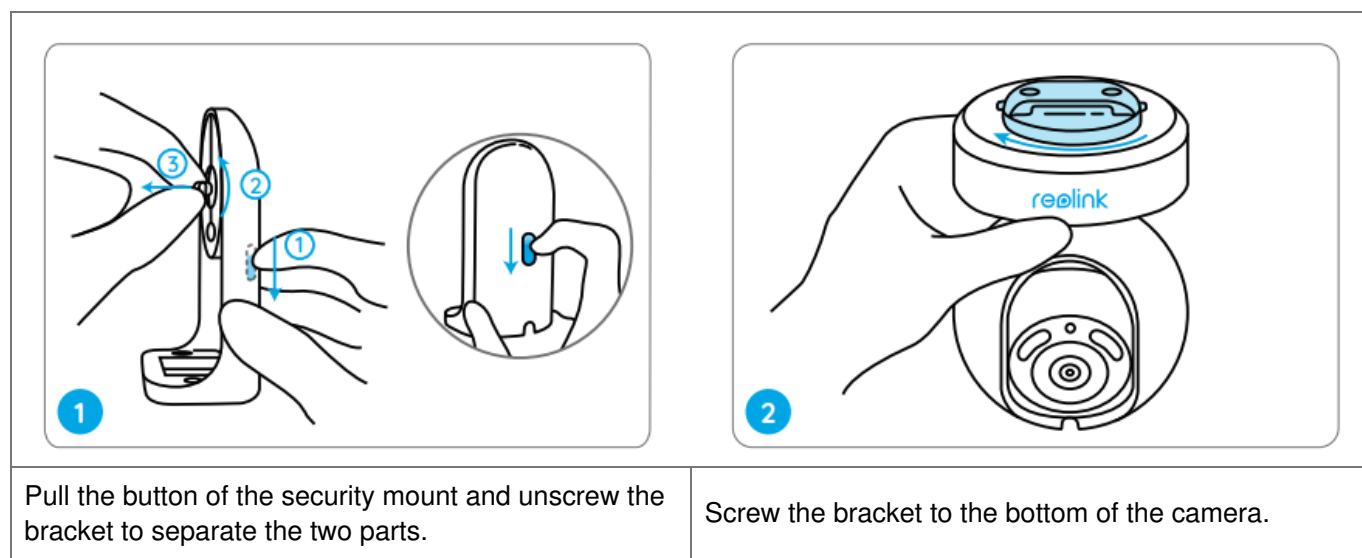


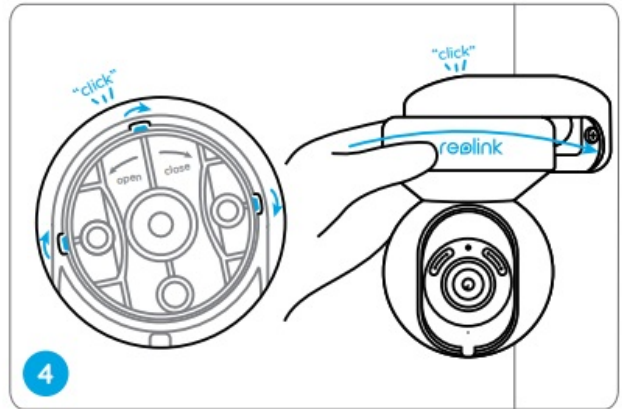
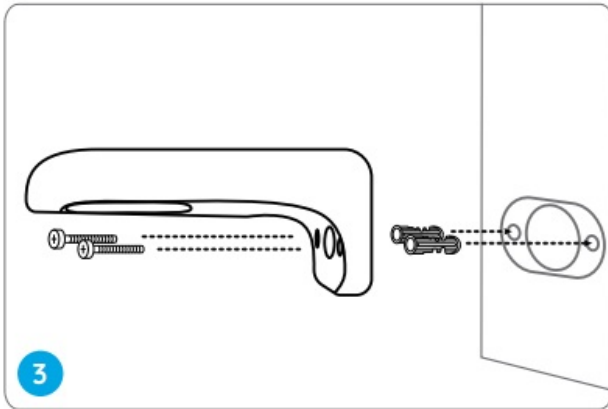
NOTE: If you access the camera via the Reolink Client, you may click the Add Device icon and choose the UID option to enter the UID of your camera. The UID is on the camera body (right below the QR code).

Install the E1 Outdoor Camera

Mount the Camera to the Wall

For outdoor use, E1 Outdoor must be installed upside down for better waterproof performance.





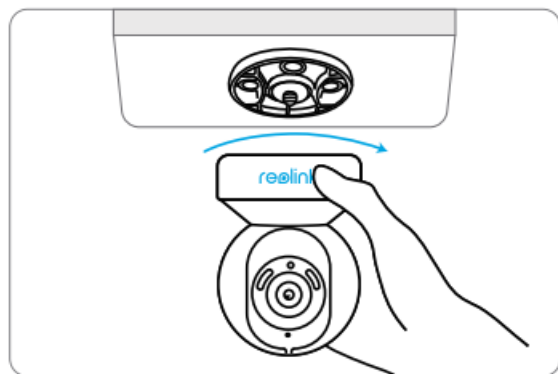
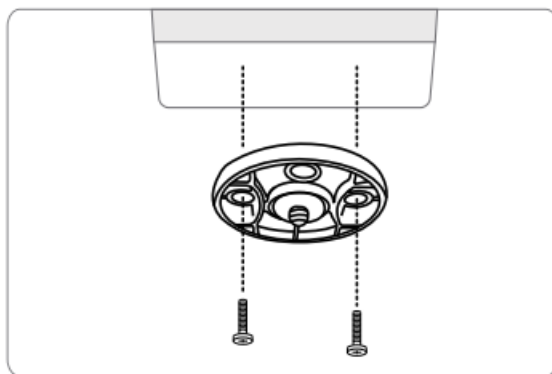
Drill holes in accordance with the mounting template and screw the security mount to the wall.

Choose a proper direction of the camera and then align the bracket to the security mount and lock the camera in place by turning anti-clockwise.

NOTE: Use the drywall anchors included in the package if needed.

Mount the Camera to the Ceiling

Pull the button of the security mount and unscrew the ceiling bracket from the mount.



Install the bracket to the ceiling. Align the camera with the bracket and turn the camera unit clockwise to lock it in position.

Troubleshooting

Camera is not Powering on

If your camera is not powering on, please try the following solutions:

- Plug the camera into another outlet.

- Use another 12V power adapter to power on the camera.

If these won't work, please contact Reolink

Support <https://support.reolink.com>

WiFi Connection Failed During Initial Setup Process

If the camera failed to connect to WiFi, please try the following solutions:

- Please ensure you have entered the correct WiFi password.
- Put your camera close to your router to ensure a strong WiFi signal.
- Change the encryption method of the WiFi network to WPA2-PSK/WPA-PSK (safer encryption) on your router interface.
- Change your WiFi SSID or password and make sure that SSID is within 31 characters and password is within 64 characters.
- Set your password using only the characters on the keyboard.

If these won't work, please contact Reolink Support <https://support.reolink.com>

Specifications

Hardware

Display Resolution: 5MP

IR Distance: 12 meters (40 ft)

Pan/Tilt Angle: Horizontal: 355° / Vertical: 50°

Power Input: DC 12V/1A

Software Features

Frame Rate: 20fps (default)

Audio: Two-way audio

IR Cut Filter: Yes

General

Operating Frequency: 2.4/5GHz Dual-band

Operating Temperature: -10°C to 55°C (14°F to 131°F)

Size: 84.7×117.8 mm

Weight: 380g

For more specifications, visit

<https://reolink.com/>.

Notification of Compliance

FCC Compliance Statement

This device complies with Part 15 of FCC Rules.

Operation is subject to the following two conditions: (1) this device may not cause harmful interference, and (2) this device must accept any interference received, including interference that may cause undesired operation. For more information, visit: <https://reolink.com/fcc-compliance-notice/>.

NOTE: This equipment has been tested and found to comply with the limits for a Class B digital device, pursuant to Part 15 of the FCC Rules. These limits are designed to provide reasonable protection against harmful interference in a residential installation. This equipment generates, uses and can radiate radio frequency energy and, if not installed and used in accordance with the instructions, may cause harmful interference to radio communications. However, there is no guarantee that interference will not occur in a particular installation. If this equipment does cause harmful interference to radio or television reception, which can be determined by turning the equipment off and on, the user is encouraged to try to correct the interference by one or more of the following

measures:

- Reorient or relocate the receiving antenna.
- Increase the separation between the equipment and receiver.
- Connect the equipment into an outlet on a circuit different from that to which the receiver is connected.
- Consult the dealer or an experienced radio/TV technician for help.

FCC RF warning statement:

The device has been evaluated to meet general RF exposure requirement. The device can be used in portable exposure condition without restriction.



Simplified EU Declaration of Conformity

Reolink declares that this device is in compliance with the essential requirements and other relevant provisions of Directive 2014/53/EU.



Correct Disposal of This Product

This marking indicates that this product should not be disposed with other household wastes throughout the EU. To prevent possible harm to the environment or human health from uncontrolled waste disposal, recycle it responsibly to promote the sustainable reuse of material resources. To return your used device, please use the return and collection systems or contact the retailer where the product was purchased. They can take this product for environment safe recycling.

Limited Warranty

This product comes with a 2-year limited warranty that is valid only if purchased from Reolink Official Store or a Reolink authorized reseller. Learn more:

<https://reolink.com/warranty-and-return/>.

NOTE: We hope that you enjoy the new purchase. But if you are not satisfied with the product and plan to return it, we strongly suggest that you reset the camera to factory default settings and take out the inserted SD card before returning.

Terms and Privacy

Use of the product is subject to your agreement to the Terms of Service and Privacy Policy at reolink.com. Keep out of reach of children.

End User License Agreement

By using the Product Software that is embedded on the Reolink product, you agree to the terms of this End User License Agreement ("EULA") between you and Reolink. Learn more: <https://reolink.com/eula/>.

ISED Radiation Exposure Statement

This equipment complies with RSS-102 radiation exposure limits set forth for an uncontrolled environment. This equipment should be installed and operated with

Technical Support

If you need any technical help, please visit our official support site and contact our support team before returning the products, <https://support.reolink.com>.

REOLINK INNOVATION LIMITED

FLAT/RM 705 7/F FA YUEN COMMERCIAL BUILDING 75-77 FA YUEN STREET MONG KOK KL HONG KONG



Product Ident GmbH

Hoferstasse 9B, 71636 Ludwigsburg, Germany

prodsg@libelleconsulting.com



APEX CE SPECIALISTS LIMITED

89 Princess Street, Manchester, M1 4HT, UK

info@apex-ce.com

Aug 2021

QSG1_B

58.03.005.0009



<https://reolink.com> <https://support.reolink.com>

Documents / Resources



[reolink E1 Wireless Security Camera](#) [pdf] User Manual

E1, Wireless Security Camera, Security Camera, Wireless Camera, E1, Camera

References

- [ce.com](#)
- [Reolink: Global Innovator in Smart Home Security and Camera Solutions](#)
- [Reolink: un innovatore globale nel campo della sicurezza per la casa intelligente e delle soluzioni di videosorveglianza](#)
- [Reolink: Global Innovator in Smart Home Security and Camera Solutions](#)
- [Reolink: Global Innovator in Smart Home Security and Camera Solutions](#)
- [Reolink® Deutschland: Zuverlässige Sicherheitslösungen im DIY-Stil](#)
- [Innovador Global en Soluciones de Cámaras y Seguridad para el Hogar Inteligente](#)
- [Innovador Global en Soluciones de Cámaras y Seguridad para el Hogar Inteligente](#)
- [Reolink : une entreprise innovante internationale en matière de solutions de caméras de surveillance et de sécurité intelligentes](#)
- [Garantie et Retour - Reolink](#)
- [Reolink: un innovatore globale nel campo della sicurezza per la casa intelligente e delle soluzioni di videosorveglianza](#)
- [Warranty & Return – Reolink](#)
- [Reolink Support - Official Reolink Help Center](#)