



reolink Duo 2 LTE 4G Security Camera Instruction Manual

[Home](#) » [reolink](#) » reolink Duo 2 LTE 4G Security Camera Instruction Manual 

Contents

- 1 [reolink Duo 2 LTE 4G Security Camera](#)
- 2 [Specifications](#)
- 3 [Product Usage Instructions](#)
- 4 [Camera Introduction](#)
- 5 [Set up the Camera](#)
- 6 [Charge the Camera](#)
- 7 [Install the Camera](#)
- 8 [Mount the Camera to the Wall](#)
- 9 [Mount the Camera to Ceiling](#)
- 10 [Safety Instructions of Battery Usage](#)
- 11 [Troubleshooting](#)
- 12 [Notification of Compliance](#)
- 13 [FAQ](#)
- 14 [Documents / Resources](#)
 - 14.1 [References](#)
- 15 [Related Posts](#)



reolink Duo 2 LTE 4G Security Camera



Specifications

- **Product:** Reolink Duo 2 LTE
- **Manufacturer:** REOLINK INNOVATION LIMITED
- **Address:** FLAT/RM 705 7/F FA YUEN COMMERCIAL BUILDING 75-77 FA YUEN STREET MONG KOK KL HONG KONG
- **EU Representative:** Product Ident GmbH
- **Address:** Hoferstasse 9B, 71636 Ludwigsburg, Germany
- **Email:** prodsg@libelleconsulting.com
- **UK Representative:** APEX CE SPECIALISTS LIMITED
- **Address:** 89 Princess Street, Manchester, M14HT, UK
- **Email:** info@apex-ce.com

PIR Detection & Alerts

- **PIR Detection Distance:**
 - Adjustable/up to 10m (33ft)
- **PIR Detecting Angle:** 150° horizontal
- **Audio Alert:**
 - Customized voice-recordable alerts
- **Other Alerts:**
 - Instant email alerts and push notifications

General

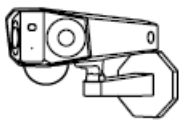
- **Operating Temperature:** -10°C to 55°C (14°F to 131°F)
- **Size:** 81x103x195mm
- **Weight** (Battery included): 720g (17.1 oz)

Product Usage Instructions

What's in the Box

The package includes the following items:

- Camera
- Antennas
- Strap
- Mounting Plate
- Mounting Hole Template
- USB Cable
- Quick Start Guide
- Surveillance Sticker
- Pack of Screws
- Screwdriver



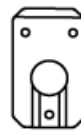
Camera



Antennas



Strap



Mounting Plate



Mounting Hole
Template



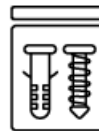
USB Cable



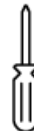
Quick Start Guide



Surveillance
Sticker



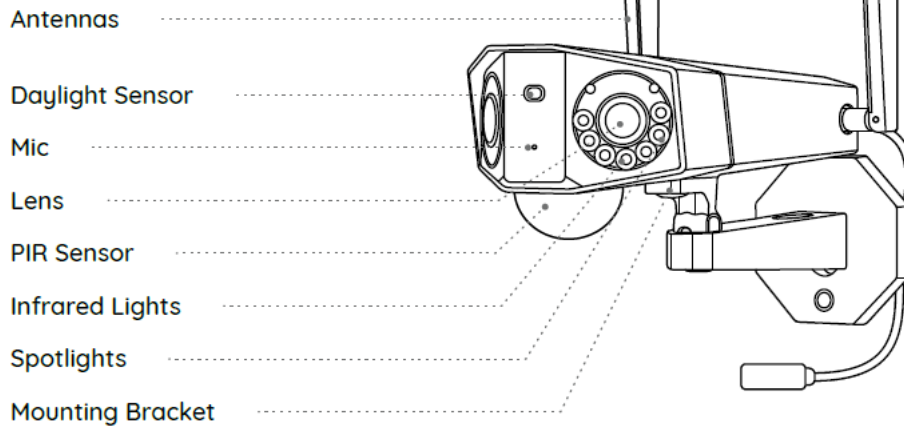
Pack of Screws



Screwdriver

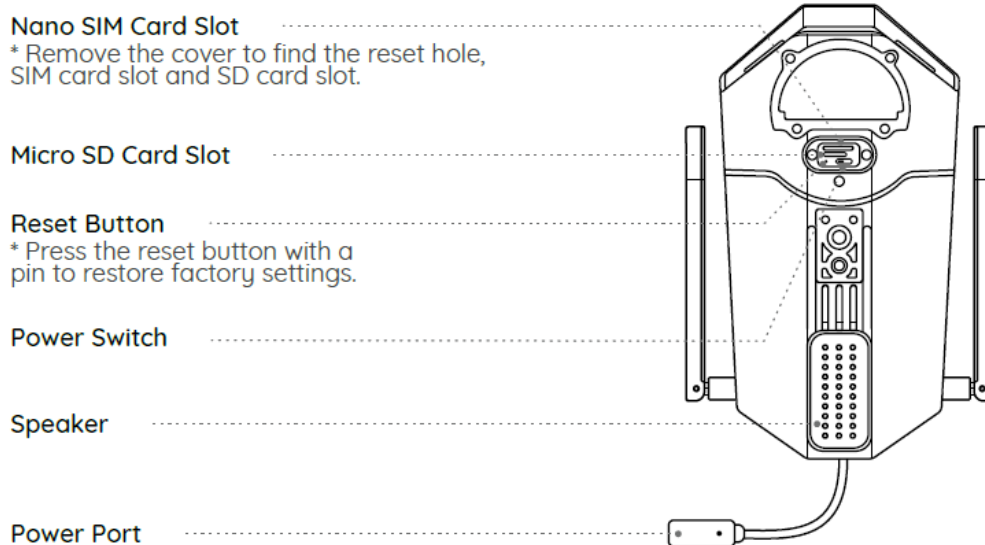
Camera Introduction

Camera Introduction



Different states of the status LED:

- **Red Light:** WiFi connection failed
- **Blue Light:** WiFi connection succeeded
- **Blinking:** Standby status
- **On:** Working status



The camera features the following components:

- Antennas
- Daylight Sensor
- Mic
- Lens
- PIR Sensor
- Infrared Lights
- Spotlights

- Mounting Bracket
- Nano SIM Card Slot
- Micro SD Card Slot
- Reset Button
- Power Switch
- Speaker
- Status LED (Different states: Red Light, Blue Light, Blinking, On)
- Power Port

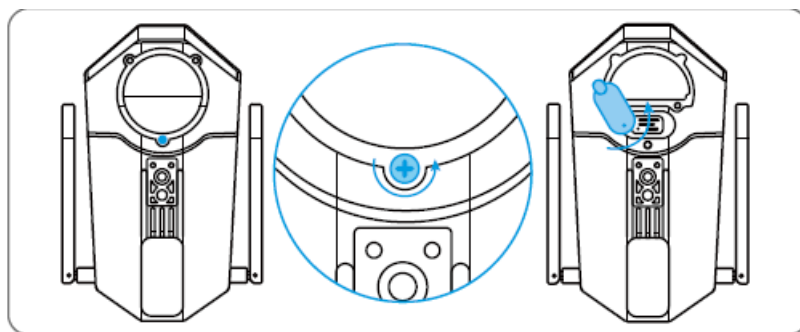
Set up the Camera

Activate SIM Card for the Camera

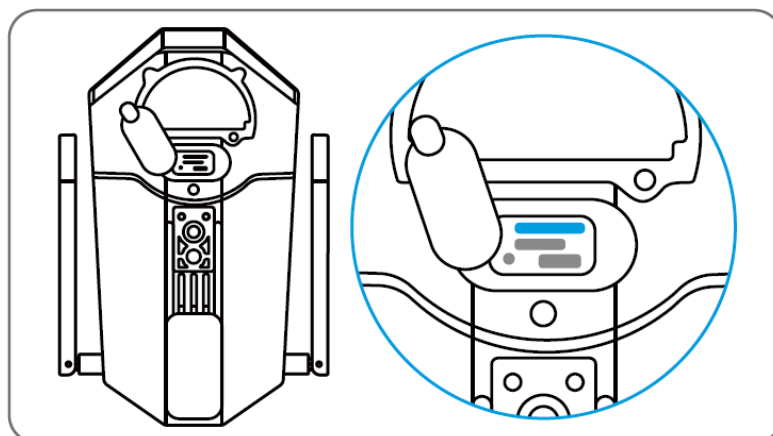
1. Remove the cover with the screwdriver and open the rubber cover.
2. Insert a SIM-eject tool into the hole beside the SIM tray and push it in to pop open the tray.
3. Place the SIM card into the tray, then insert the tray into the camera completely.
4. Turn on the camera and wait for the network connection to establish.
5. Choose a Nano SIM card that supports WCDMA and FDD LTE.
6. Some SIM cards have a PIN code. You may use your smartphone to disable the PIN first.

NOTE: Do not insert the IoT or M2M SIM into your smartphone.

Insert the SIM Card

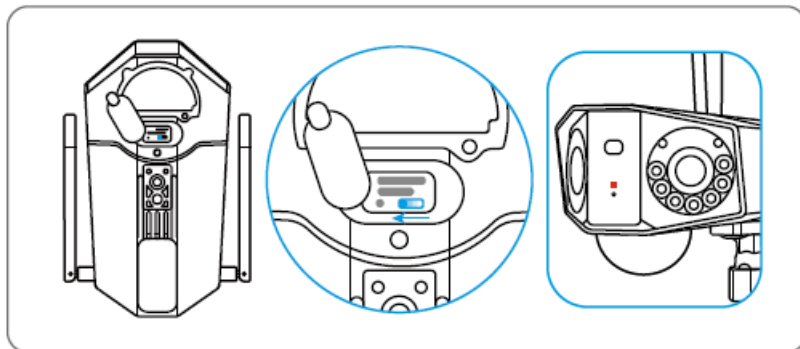


Remove the cover with the screwdriver and then open the rubber cover.

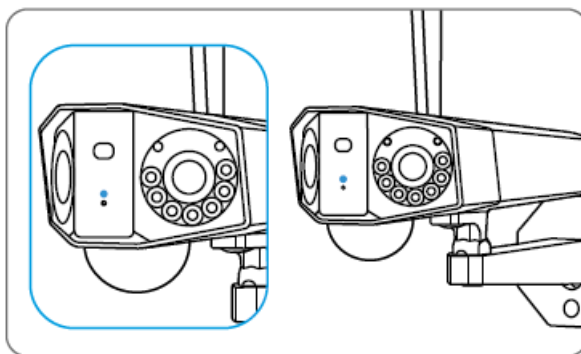


Insert a SIM-eject tool into the hole beside the SIM tray and push it in to pop open the tray. Place the SIM card into the tray, then insert the tray into the camera completely.

Register the SIM Card



With the SIM card inserted, you can turn on the camera. Wait a few seconds and a red light will be on and solid for a couple of seconds. Then, it will go out.



A blue LED will flash for a few seconds and then go solid before going out. You will hear a voice prompt “Network connection succeeded”, which means the camera has been successfully connected to the network.

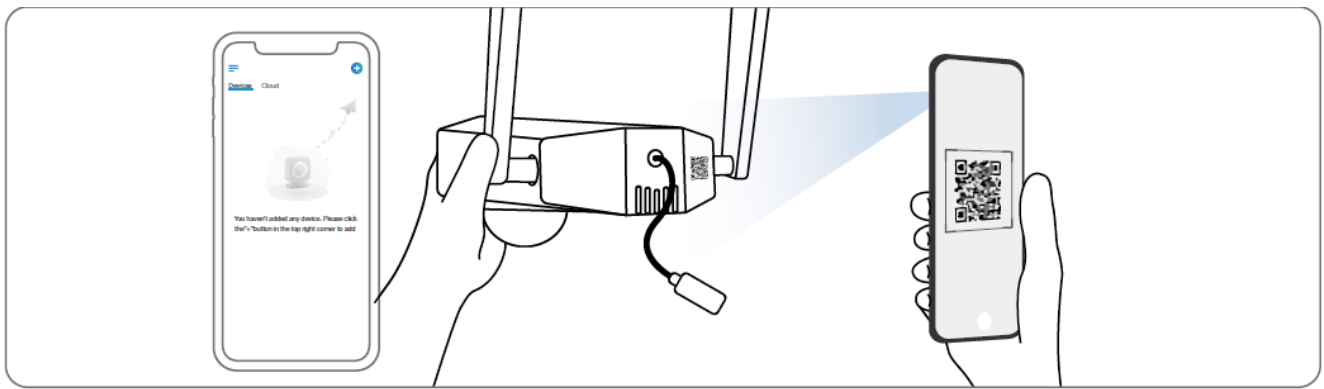
Set up the Camera on the Phone



1. Scan to download the Reolink App from the App Store or Google Play store.
2. Launch the Reolink App and click the “+” button in the top right corner to add the camera.
3. Scan the QR code on the camera and follow the onscreen instructions to finish the initial setup.

Set up the Camera on PC (Optional)

1. Download and install the Reolink Client on your PC.
2. Launch the Reolink Client and click the “+” button.



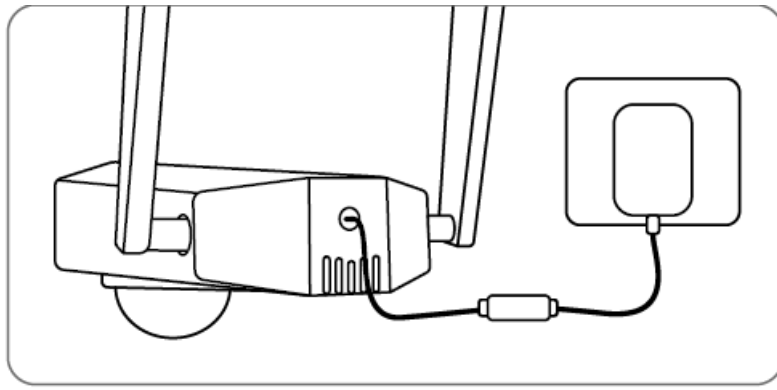
3. Input the UID code of the camera to add it and follow the onscreen instructions to finish the initial setup.

NOTE: You may also run into the following situations:

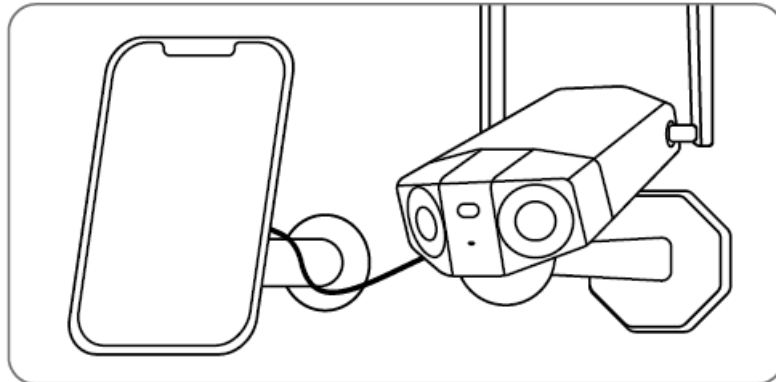
	Voice Prompt	Camera Status	Solutions
1	"SIM card cannot be recognized"	Camera cannot recognize this SIM card.	<ol style="list-style-type: none"> 1. Check if the SIM card is facing the reverse direction. 2. Check if the SIM card is not fully inserted and insert it again.
2	"The SIM card is locked with a PIN Please disable it"	Your SIM card has a PIN.	Put the SIM card into your mobile phone and disable the PIN.
3	"Not registered on network. Please activate your SIM card and check the signal strength"	Camera fails to register to the operator network.	<ol style="list-style-type: none"> 1. Check whether your card is activated or not. If not, please call your operator to activate the SIM card. 2. The signal is weak at the current position. Please move the camera to a location with better signal. 3. Check if you are using the correct version of the camera.
4	"Network connection failed"	Camera fails to connect to the server.	The camera will be in Standby mode and reconnect later.
5	"Data call failed. Please confirm your cellular data plan is available or import the APN settings"	The SIM card has run out of data or APN settings are not correct.	<ol style="list-style-type: none"> 1. Please check whether the data plan for the SIM card is still available. 2. Import the correct APN settings to the camera.

Charge the Camera

It's recommended to fully charge the battery before mounting the camera outdoors.



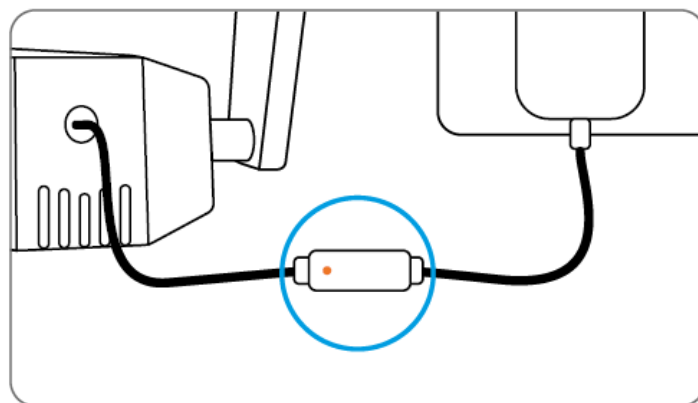
Charge the battery with a power adapter. (not included)



Charge the battery with the Reolink Solar Panel (not included if you only purchase the camera).

Charging Indicator:

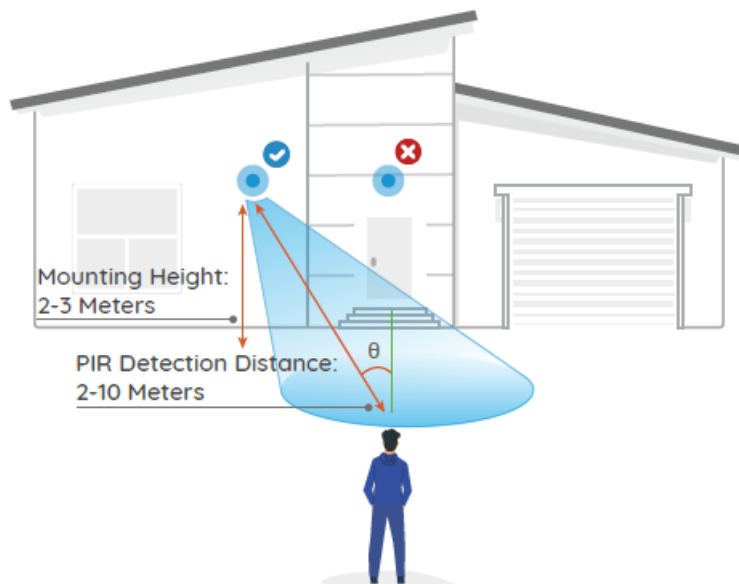
- **Orange LED:** charging
- **Green LED:** Fully charged



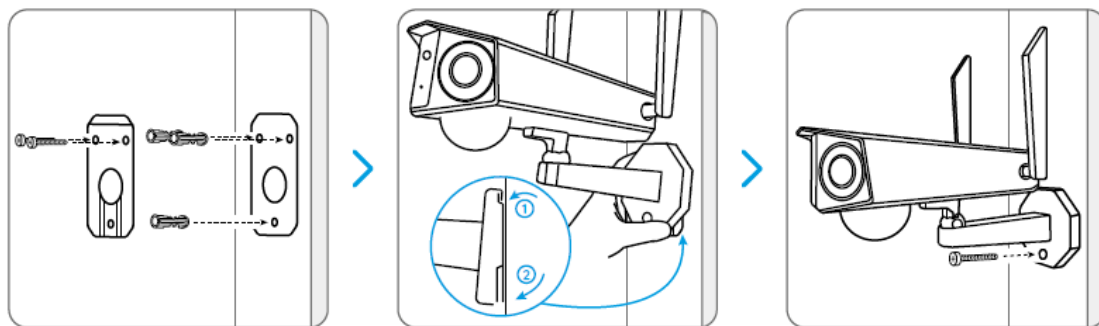
Install the Camera

- Install the camera 2-3 meters (7-10 ft) above the ground. This height maximizes the detection range of the PIR motion sensor.
- For better motion detection performance, please install the camera angularly.

NOTE: If a moving object approaches the PIR sensor vertically, the camera may fail to detect motion.

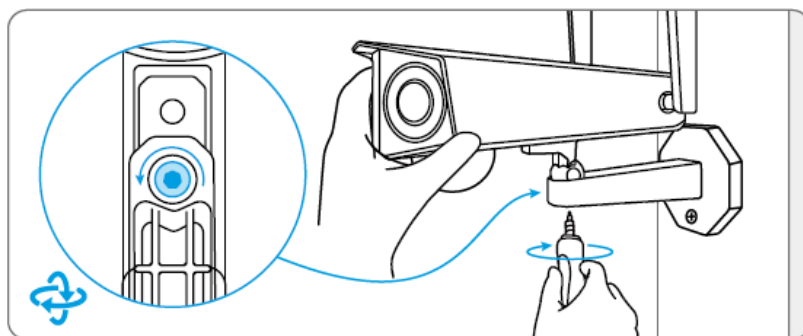


Mount the Camera to the Wall

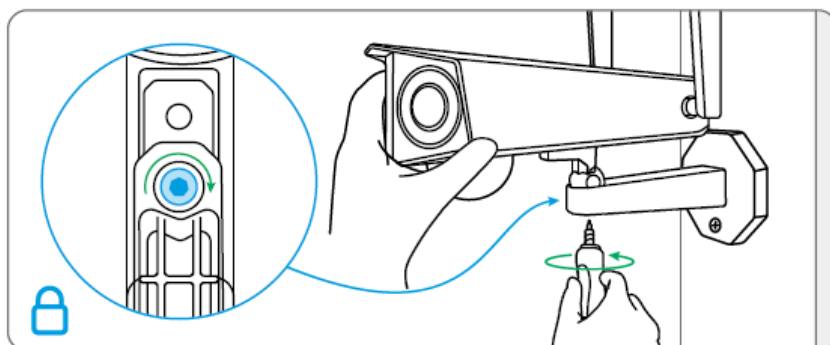


Drill holes in accordance with the mounting template. Secure the mounting plate to the wall with the upper two screws and hang the camera on it. Then lock the camera in position with the lower screw.

NOTE: Use the drywall anchors included in the package if needed.



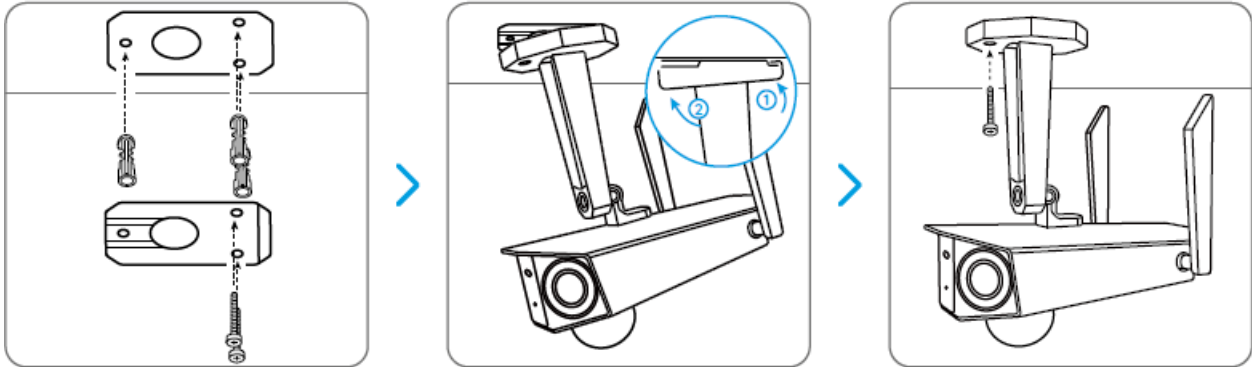
To get the best field of view, loosen the adjustment screw on security mount and turn the camera.



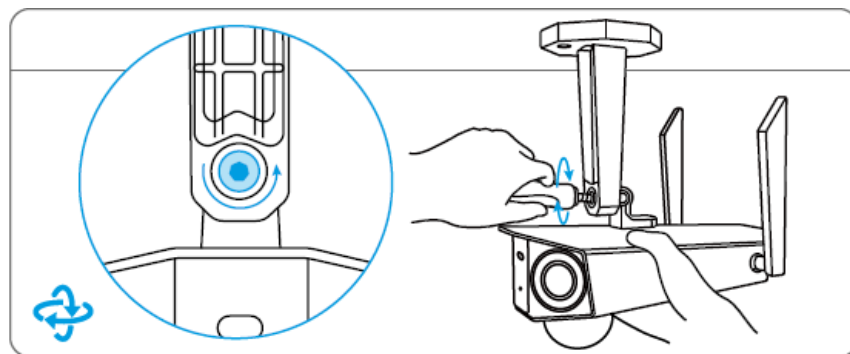
Stiffen the adjustment screw to lock the camera.

Mount the Camera to Ceiling

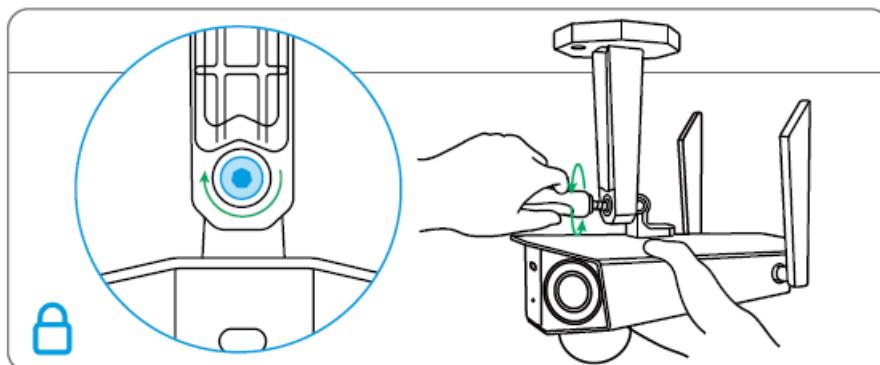
NOTE: The camera can't be adjusted horizontally when ceiling mounted. Please adjust the camera angle before fixing it.



Drill holes in accordance with the mounting template. Secure the mounting plate to the wall with the upper two screws and hang the camera on it. Then lock the camera in position with the lower screw.



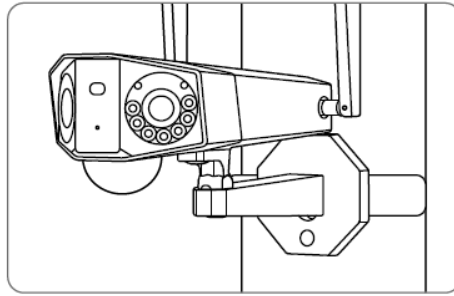
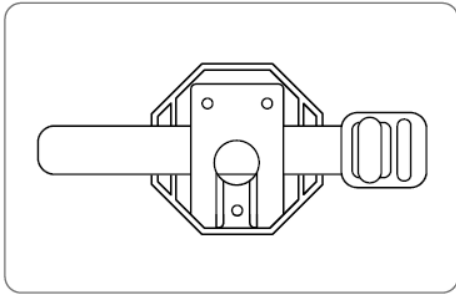
To get the best field of view, loosen the adjustment screw on security mount and turn the camera.



Stiffen the adjustment screw to lock the camera.

Install the Camera with Loop Strap

Thread the loop strap through the slots and fasten the strap. It is the most recommended installation method if you plan to mount the camera to a tree.



Safety Instructions of Battery Usage

The camera is not designed for running 24/7 at full capacity or around-the-clock live streaming. It's designed to record motion events and to live view remotely only when you need it.

1. The battery is built-in, so do not remove it from the camera.
2. Charge the rechargeable battery with a standard and high-quality DC 5V/9V battery charger or Reolink solar panel. Do not charge the battery with solar panels from any other brands.
3. Charge the battery when temperatures are between 0°C and 45°C and always use the battery when temperatures are between -20°C and 60°C.
4. Do not charge, use or store the battery near any ignition sources, such as fire or heaters.
5. Do not use the battery if it gives off an odor, generates heat, becomes discolored or deformed, or appears abnormal in any ways. If the battery is being used or charged, turn off the power switch or remove the charger immediately, and stop using it.
6. Always follow the local waste and recycle laws when you get rid of the used battery.

Troubleshooting

Camera is not Powering on

If your camera is not turning on, please apply the following solutions:

- Make sure you've turned the power button on.
- Charge the battery with a DC 5V/2A power adapter. When the green light is on, the battery is fully charged.

If these won't work, please contact Reolink Support.

PIR Sensor Fails to Trigger Alarm

If the PIR sensor fails to trigger any kind of alarm within the covered area, try the following solutions:

- Make sure that the PIR sensor or the camera is installed in the right direction.
- Make sure the PIR sensor is enabled or the schedule is set up properly and running.
- Check the sensitivity settings and make sure it's set up properly.
- Make sure the battery is working.
- Reset the camera and try again.

If these won't work, please contact Reolink Support.

Unable to Receive Push Notifications

If you fail to receive any push notifications when motion is detected, try the following solutions:

- Make sure the push notification has been enabled.
- Make sure the PIR schedule is set up properly.
- Check the network connection on your phone and try again.
- Make sure the camera is connected to the Internet. If the LED indicator under the camera daylight sensor is solid red or flickering red, it means that your device disconnects from the Internet.
- Make sure you've enabled Allow Notifications on your phone. Go to the System Settings on your phone and allow Reolink App to send push notifications.

If these won't work, please contact Reolink Support.

Notification of Compliance

FCC Compliance Statement

This device complies with Part 15 of the FCC Rules. Operation is subject to the following two conditions:

1. this device may not cause harmful interference, and
 2. this device must accept any interference received, including interference that may cause undesired operation.
- Changes or modifications not expressly approved by the party responsible for compliance could void the user's authority to operate the equipment.

NOTE: This equipment has been tested and found to comply with the limits for a Class B digital device, pursuant to Part 15 of the FCC Rules. These limits are designed to provide reasonable protection against harmful interference in a residential installation. This equipment generates, uses and can radiate radio frequency energy and, if not installed and used in accordance with the instructions, may cause harmful interference to radio communications. However, there is no guarantee that interference will not occur in a particular installation. If this equipment does cause harmful interference to radio or television reception, which can be determined by turning the equipment off and on, the user is encouraged to try to correct the interference by one or more of the following measures:

- Reorient or relocate the receiving antenna.
- Increase the separation between the equipment and receiver.
- Connect the equipment into an outlet on a circuit different from that to which the receiver is connected.
- Consult the dealer or an experienced radio/TV technician for help.

FCC RF warning statement:


The device has been evaluated to meet general RF exposure requirement. The device can be used in portable exposure condition without restriction.

Simplified EU Declaration of Conformity

Reolink declares that this device is in compliance with the essential requirements and other relevant provisions of Directive 2014/53/EU.

Correct Disposal of This Product



-  This marking indicates that this product should not be disposed with other household wastes throughout the EU. To prevent possible harm to the environment or human health from uncontrolled waste disposal, recycle it responsibly to promote the sustainable reuse of material resources. To return your used device, please use the return and collection systems or contact the retailer where the product was purchased. They can take this product for environment safe recycling.

Limited Warranty

This product comes with a 2-year limited warranty that is valid only if purchased from Reolink Official Store or a Reolink authorized reseller.

NOTE: We hope that you enjoy the new purchase. But if you are not satisfied with the product and plan to return, we strongly suggest that you reset the camera to factory default settings and take out the inserted SD card before returning.

Terms and Privacy

Use of the product is subject to your agreement to the Terms of Service and Privacy Policy at reolink.com. Keep out of reach of children.

End User License Agreement

By using the Product Software that is embedded on the Reolink product, you agree to the terms of this End User License Agreement ("EULA") between you and Reolink.

ISED Radiation Exposure Statement

This equipment complies with RSS-102 radiation exposure limits set forth for an uncontrolled environment. This equipment should be installed and operated with minimum distance 20cm between the radiator & your body.

FAQ

1. What should I do if the camera cannot recognize the SIM card?

If the camera cannot recognize the SIM card, please check if the SIM card is inserted correctly. If the issue persists, contact customer support for further assistance.

2. What should I do if my SIM card is locked with a PIN?

If your SIM card has a PIN, please disable it before inserting it into the camera. You can disable the PIN by contacting your mobile service provider.

3. What should I do if the camera fails to register to the operator network?

If the camera fails to register to the operator network, please make sure that your SIM card is activated and check the signal strength. If the issue persists, contact your mobile service provider for assistance.

4. What should I do if the camera fails to connect to the server?

If the camera fails to connect to the server, please check your internet connection and ensure that your cellular data plan is available. You can also try importing the APN settings provided by your mobile service provider.

5. What should I do if the data call fails?

If the data call fails, please confirm that your cellular data plan is active and that you have sufficient data coverage. If the issue persists, contact your mobile service provider for further assistance.

Documents / Resources

	reolink Duo 2 LTE 4G Security Camera [pdf] Instruction Manual Duo 2 LTE 4G Security Camera, Duo 2 LTE 4G, Security Camera, Camera
---	--

References

- [ce.com](#)
- [Reolink Official: Security Cameras and Systems for Home & Business](#)
- [User Manual](#)