



# reolink Drive High-Capacity Local Storage for Go PT Instruction Manual

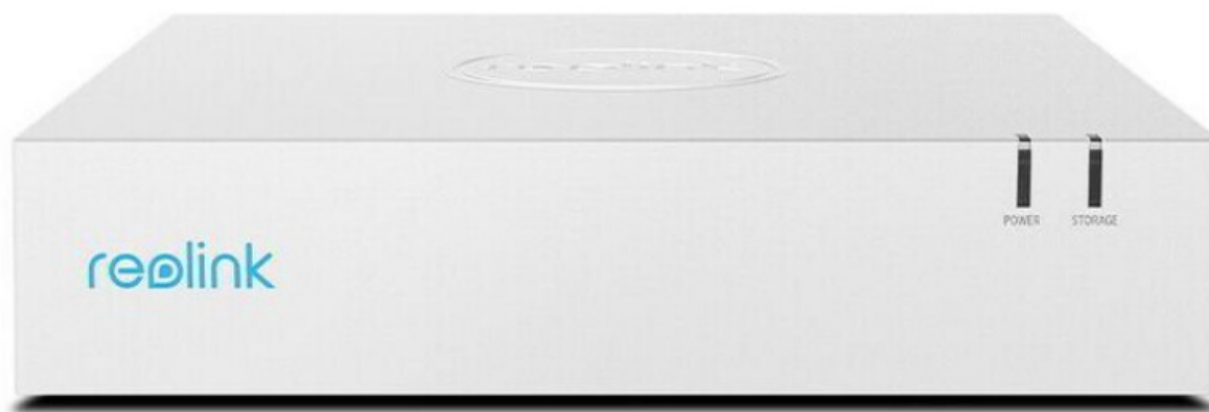
[Home](#) » [reolink](#) » reolink Drive High-Capacity Local Storage for Go PT Instruction Manual 

## Contents

- [1 reolink Drive High-Capacity Local Storage for Go PT](#)
- [2 What's in the Box](#)
- [3 Drive Introduction](#)
- [4 Connection Diagram](#)
- [5 Playback the Recordings in the Drive](#)
- [6 Troubleshooting](#)
- [7 Specifications](#)
- [8 Notification of Compliance](#)
- [9 Limited Warranty](#)
- [10 Documents / Resources](#)
  - [10.1 References](#)
- [11 Related Posts](#)



**reolink Drive High-Capacity Local Storage for Go PT**



## What's in the Box



Drive  
x1



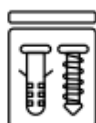
Power Adapter  
x1



1m Ethernet Cable  
x1

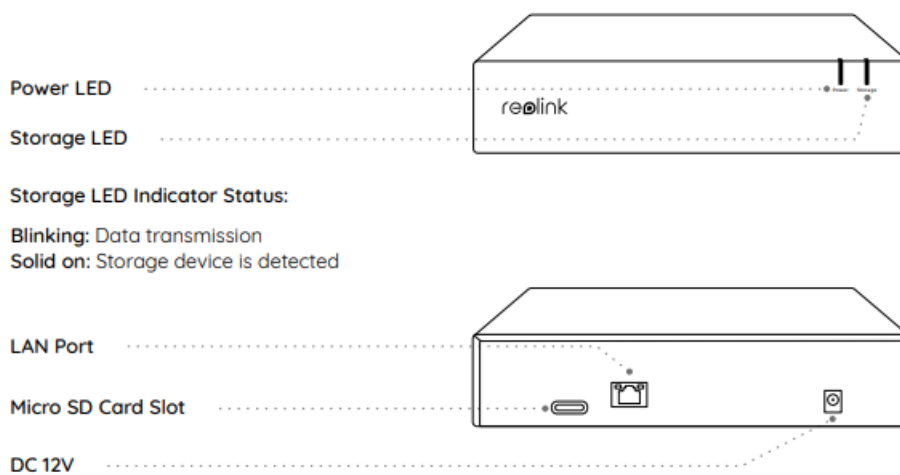


Quick Start Guide  
x1

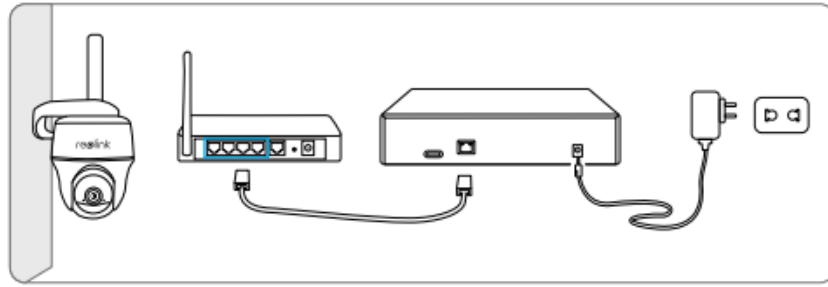


Pack of Screws  
x1

## Drive Introduction



## Connection Diagram



- **Step 1:** Connect the Drive to the power outlet. Please use stable power supply to avoid device exception or even damage.
- **Step 2:** Connect the router to the LAN port of the Drive with the Ethernet cable.
- **Step 3:** Insert the Micro SD Card (not included in the package) in the SD card slot .
- **Step 4:** Download and launch the Reolink App and follow the on-screen instructions to finish the initial setup.

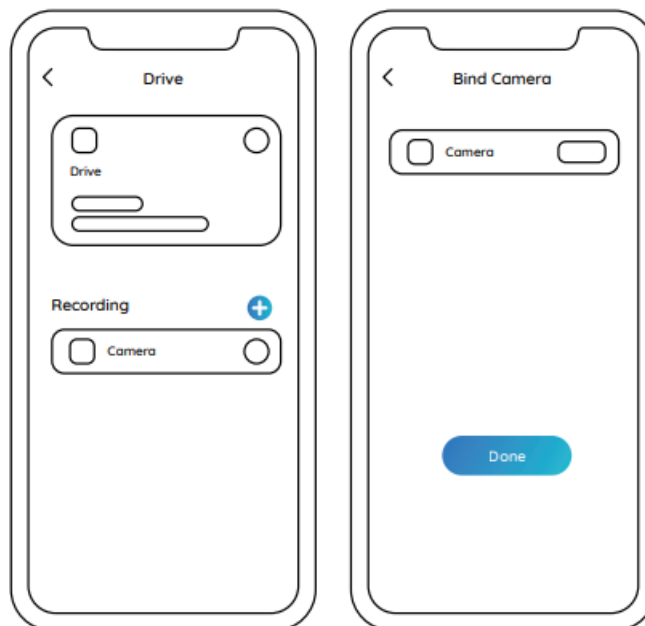
## On Smartphone

Scan to download the Reolink App



## Bind the Camera to the Drive

Before you bind the camera to the Drive, please access the camera via the Reolink App and set up the PIR schedule and the sensitivity.

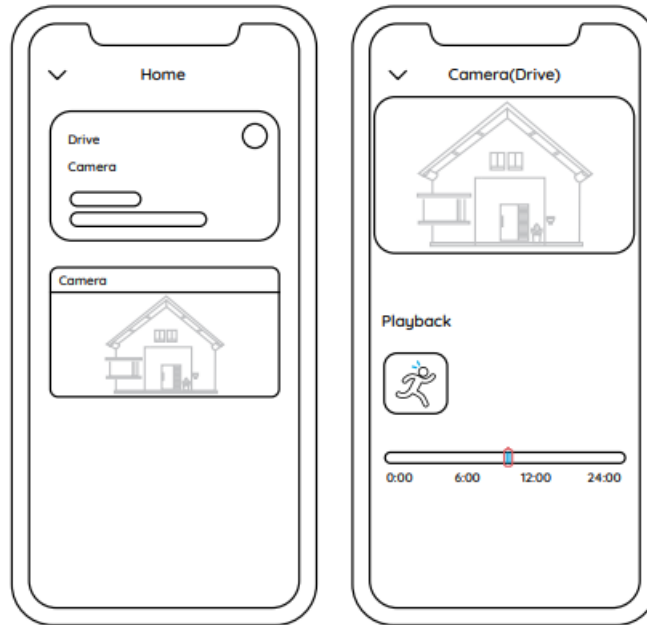


- Tap the Drive and enter the Homepage. Click the " + " icon in the Recording list to go to the Bind Camera interface. Then supporter camera will show on the page.
- Click the Bind icon to bind the camera. Once the binding succeeded, the camera will show in the Recording list.

Then future recordings will be uploaded to the Drive if the camera is triggered.

## Playback the Recordings in the Drive

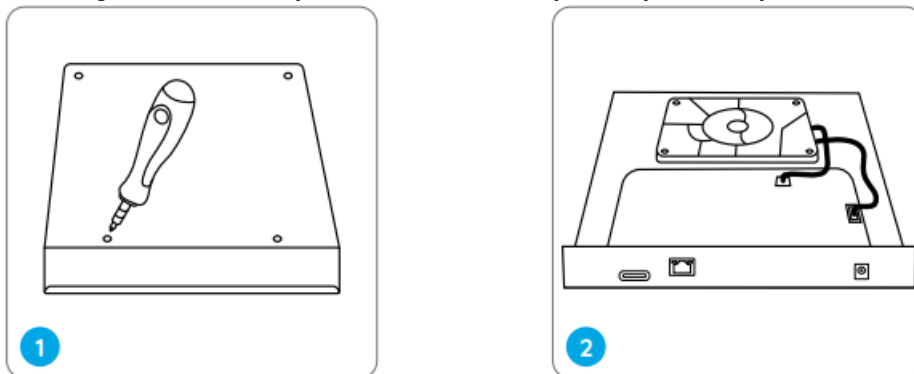
If you want to playback the camera's recordings in the Drive, you may refer to the following steps:



- Click the Drive and enter the Homepage. Tap the camera in the Recording list. You will see the Playback interface.
- Choose the date on which you want to search for videos.
- Slide the timeline to quickly locate a specific time. Or you may click on the specific clip to play the video.

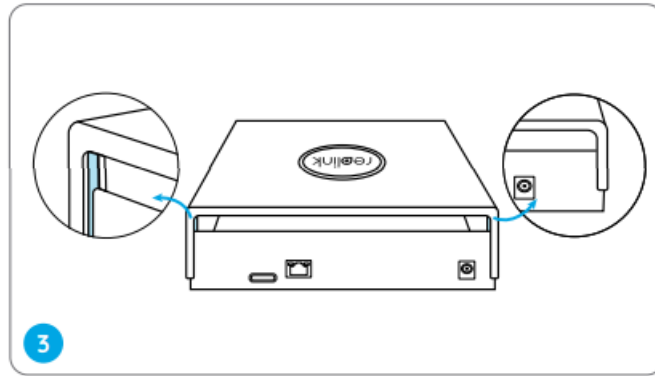
## Install HDD to the Drive (Optional)

If the Micro SD Card storage doesn't meet your record demand, you may manually install a HDD for the Drive.

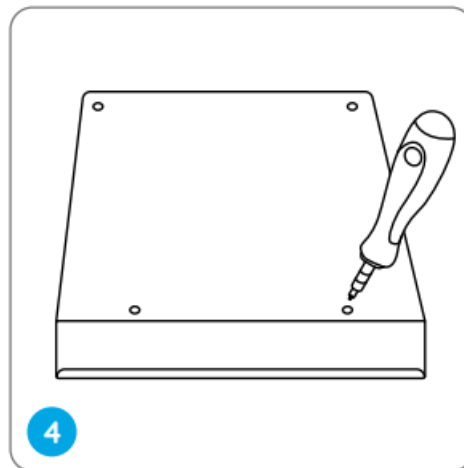


1. Power off the Drive. Loosen the four screws on the bottom of the Drive to remove the cover.
2. Connect the HDD to the SATA connector as well as to the power connector. And fix it with the provided screws.

Align the edges and the corners of the outer casing, and make sure the two grooves are fitted. Then close the cover.



Reassemble the Drive with screws.



## Troubleshooting

### Failed to Access the Drive Locally

If you failed to access the Drive locally via Reolink App, please try the following solutions:

- Check if the Drive is powered on.
- Connect the Drive (LAN port) to your router with a network cable.
- Swap another Ethernet cable or plug the Drive into other ports on the router.

If it still doesn't work, please contact Reolink Support.

### Failed to Bind the Camera to the Drive

If you failed to bind the camera to the Drive, please try the following solutions:

- Check if the camera model is supported.
- Check if you can access the camera via the Reolink App on your phone.
- Upgrade the Reolink App on your phone to the latest version.

If it still doesn't work, please contact Reolink Support.

## Specifications

### Decoding

Video Format: H.264

Synchronous Playback: 1 channel

### Storage

Micro SD Card Slot: Up to 128GB.

SATA: 1 SATA interface for a HDD (Max. 3TB)

### General

Power Supply: DC 12V/2A

Power Consumption: <3W (without HDD)

Operating Temperature: -10°C ~ +55°C (14F~131°F), 10%~90%

Size: 215 x 212 x 47.5mm

Weight: 520g (without HDD)

### Notification of Compliance

#### Simplified EU Declaration of Conformity

Reolink declares that this device is in compliance with the essential requirements and other relevant provisions of Directive 2014/30/EU.

#### Correct Disposal of This Product

This marking indicates that this product cannot be disposed with other household wastes throughout the EU. To prevent possible harm to the environment or human health from uncontrolled waste disposal and promote the sustainable reuse of material resources, please recycle it responsibly. To return your used device, please visit the Return and Collection System or contact the retailer from whom the product was purchased. They can take this product away for environmentally safe recycling.

### Limited Warranty

This product comes with a 2-year limited warranty that is valid only if purchased from Reolink Official Store or a Reolink authorized reseller. Learn more at Reolink website.

**NOTE:** We hope that you enjoy the new purchase. But if you are not satisfied with the product and plan to return, we strongly suggest that you format the SD card or take out the inserted SD card before returning.

### Terms and Privacy

Use of the product is subject to your agreement to the Terms of Service and Privacy Policy at reolink.com. Keep out of reach of children.

### End User License Agreement

By using the Product Software that is embedded on the Reolink product, you agree to the terms of this End User License Agreement ("EULA") between you and Reolink.

### Documents / Resources

	<a href="#">reolink Drive High-Capacity Local Storage for Go PT</a> [pdf] Instruction Manual Drive High-Capacity Local Storage for Go PT, Local Storage for Go PT, Storage for Go PT, PT
---	---

### References

- [ce.com](https://www.ce.com)
- [Reolink: Global Innovator in Smart Home Security and Camera Solutions](#)

