



reolink B0CJ2CK6QS Duo 2 Solar Security Camera User Guide

[Home](#) » [reolink](#) » reolink B0CJ2CK6QS Duo 2 Solar Security Camera User Guide 

Contents

- [1 reolink B0CJ2CK6QS Duo 2 Solar Security Camera](#)
- [2 Product Information](#)
- [3 What's in the Box](#)
- [4 Camera Introduction](#)
- [5 Set up the Camera](#)
- [6 Charge the Camera](#)
- [7 Install the Camera](#)
- [8 Mount the Camera to the Wall](#)
- [9 Mount the Camera to Ceiling](#)
- [10 Safety Instructions of Battery Usage](#)
- [11 Troubleshooting](#)
- [12 Specification](#)
- [13 Notification of Compliance](#)
- [14 Limited Warranty](#)
- [15 Documents / Resources](#)
 - [15.1 References](#)



reolink B0CJ2CK6QS Duo 2 Solar Security Camera



Product Information

Specifications

- Model: Reolink Duo 2
- Product Code: 58.03.001.0285
- Release Date: August 2022

Camera Introduction

The Reolink Duo 2 camera is equipped with the following features:

- Antennas for wireless connectivity
- Daylight sensor for optimal image quality
- Mic for audio recording
- Lens for capturing video footage
- PIR sensor for motion detection
- Infrared lights and spotlights for night vision
- Mounting bracket for easy installation
- Status LED indicating WiFi connection status and camera status
- Micro SD card slot for local storage
- Reset button for restoring factory settings
- Power switch for turning the camera on/off
- Speaker for two-way audio communication
- Power port for charging the camera

Set up the Camera

Step 1: Download the Reolink App

To set up the camera, you need to download the Reolink App from the App Store or Google Play store.

Step 2: Power on the Camera

Loosen the screw and remove the cover of the camera. Then, turn on the power switch to power on the camera.

Step 3: Add the Camera to the Reolink App

Launch the Reolink App and click the “+” button in the top right corner to add the camera. Scan the QR code on the camera and follow the onscreen instructions to finish the initial setup.

If you prefer to set up the camera on a PC, you can follow these optional steps:

Set up the Camera on PC (Optional)

Step 1: Download and Install the Reolink Client

Go to <https://reolink.com> > Support > App&Client to download and install the Reolink Client on your PC.

Step 2: Power on the Camera

Loosen the screw and remove the cover of the camera. Then, turn on the power switch to power on the camera.

Step 3: Add the Camera to the Reolink Client

Launch the Reolink Client and click the “+” button. Enter the UID code of the camera to add it and follow the onscreen instructions to finish the initial setup.

Charge the Camera

Before mounting the camera outdoors, it is recommended to fully charge the battery. You can charge the camera using a power adapter (not included) or with a Reolink Solar Panel (not included if you only purchase the camera).

The charging indicator on the camera shows:

- Orange LED: Charging
- Green LED: Fully charged

Install the Camera

When installing the camera, please keep in mind the following:

Mounting Height

The recommended mounting height for the camera is 2-3 meters.

PIR Detection Distance

The PIR sensor of the camera can detect motion within a distance of 2-10 meters.

Mount the Camera to the Wall

1. Drill holes in accordance with the provided mounting template.
2. Secure the mounting plate to the wall using the upper two screws.
3. Hang the camera on the mounting plate and lock it in position with the lower screw.

Note: Use the included drywall anchors if needed.

Adjusting the Camera Angle

To achieve the best field of view, loosen the adjustment screw on the security mount and turn the camera. Once you have set the desired angle, tighten the adjustment screw to lock the camera in place.

Mount the Camera to Ceiling

1. Drill holes in accordance with the provided mounting template.
2. Secure the mounting plate to the ceiling using the upper two screws.
3. Hang the camera on the mounting plate and lock it in position with the lower screw.

Note: The camera cannot be adjusted horizontally when ceiling mounted. Please adjust the camera angle before fixing it.

Safety Instructions of Battery Usage

Ensure proper usage and safety when handling the camera's battery:

- Do not disassemble or modify the battery.
- Avoid exposing the battery to high temperatures or fire.
- Do not short-circuit the battery or dispose of it in water or other liquids.
- Keep the battery away from children and pets.

Troubleshooting

If you encounter any issues with the camera, refer to the Troubleshooting section in the user manual or contact customer support for assistance.

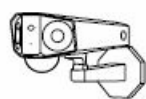
Notification of Compliance

The Reolink Duo 2 camera complies with all relevant regulations and standards.

FAQ

- Q: How can I download the Reolink App?
A: You can download the Reolink App from the App Store for iOS devices or Google Play store for Android devices.
- Q: Can I use a power adapter to charge the camera?
A: Yes, you can charge the camera using a power adapter. However, please note that the power adapter is not included with the camera.
- Q: Can I adjust the camera angle after mounting it to the wall?
A: Yes, you can adjust the camera angle by loosening the adjustment screw on the security mount. Once you have set the desired angle, tighten the adjustment screw to lock the camera in place.

What's in the Box



Camera



Antennas



Strap



Mounting Plate



Mounting Hole
Template



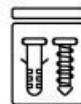
USB Cable



Quick Start Guide



Surveillance
Sticker

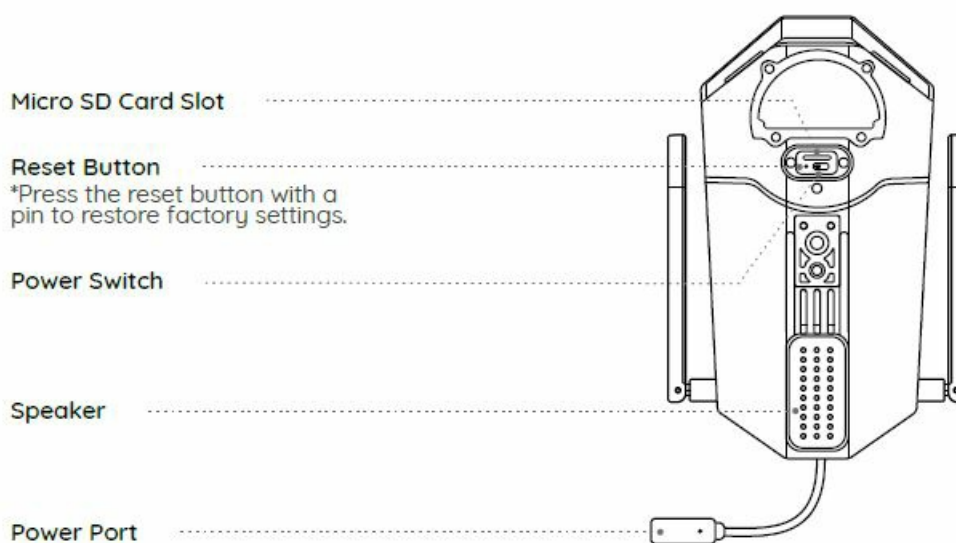
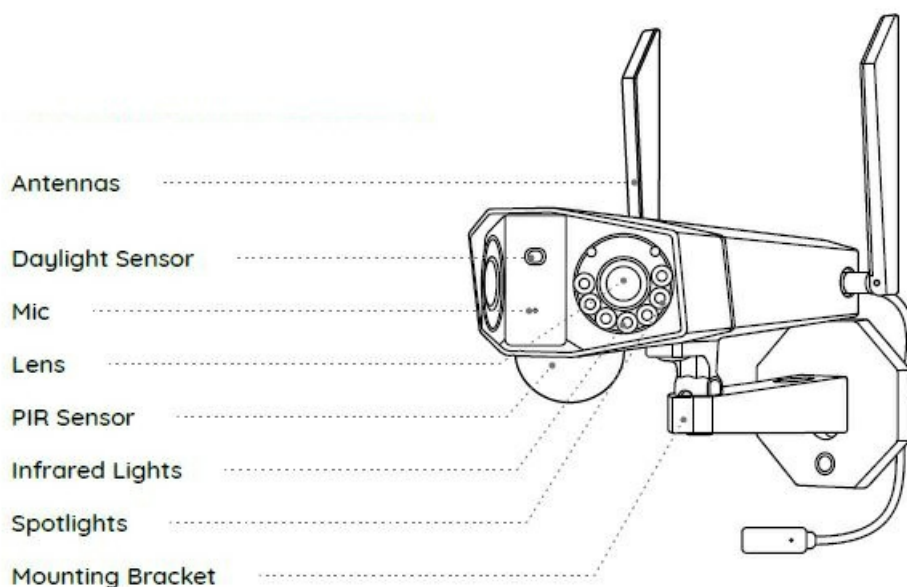


Pack of Screws



Screwdriver

Camera Introduction



Different states of the status LED:

- Red Light: WiFi connection failed

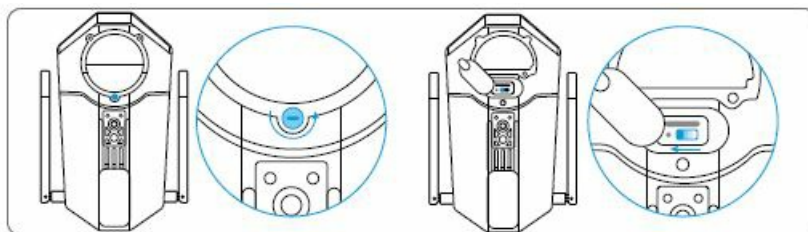
- Blinking: Standby status
- Blue Light: WiFi connection succeeded
- On: Working status

Set up the Camera

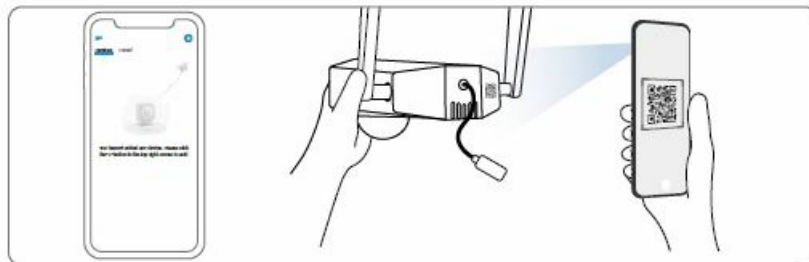
- Step 1 Scan to download the Reolink App from the App Store or Google Play store.



- Step 2 Loosen the screw and remove the cover, then turn on the power switch to power on the camera



- Step 3 Launch the Reolink App, click the button in the top right corner to add the camera. Scan the QR code on the device and follow the onscreen instructions to finish initial setup.

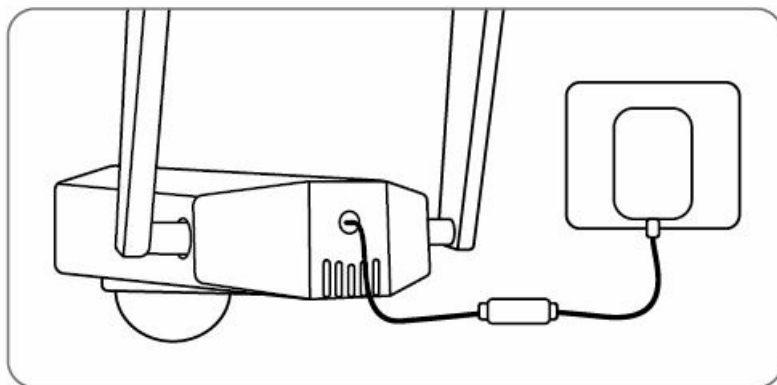


Set up the Camera on PC (Optional)

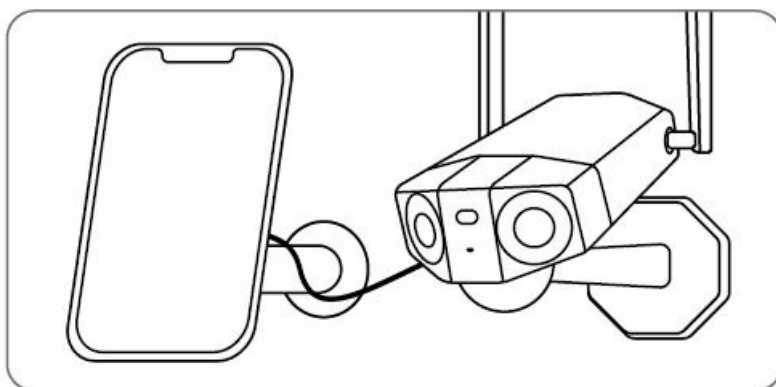
- Step 1 Download and install the Reolink Client: Go to <https://reolink.com> > Support > App&Client.
- Step 2 Loosen the screw and remove the cover, then turn on the power switch to power on the camera.
- Step 3 Launch the Reolink Client, click the button, input the UID code of the camera to add it and follow the onscreen instructions to finish initial setup

Charge the Camera

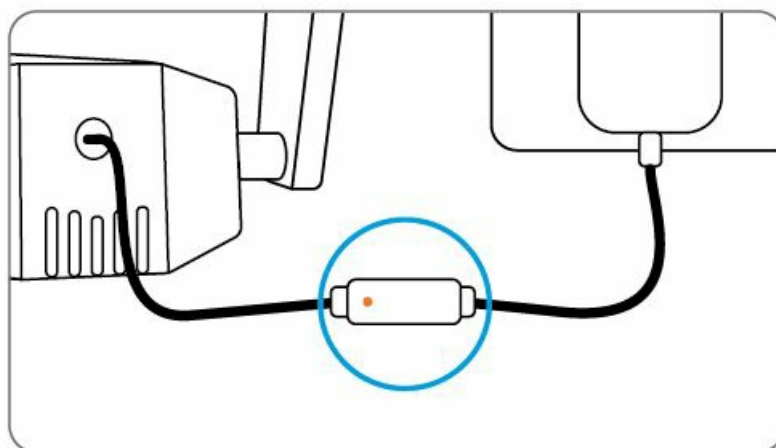
It's recommended to fully charge the battery before mounting the camera outdoors



- Charge the battery with a power adapter. (not included)
- Charge the battery with the Reolink Solar Panel (not included if you only purchase the camera).

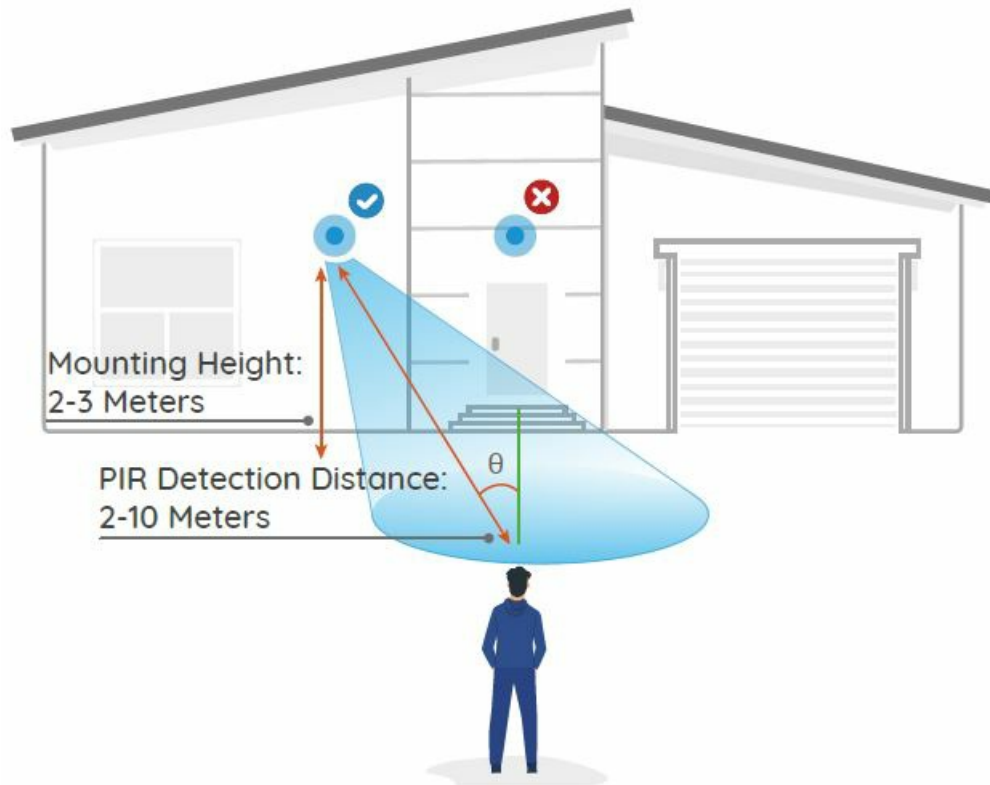


Charging Indicator:



- Orange LED: charging
- Green LED: Fully charged

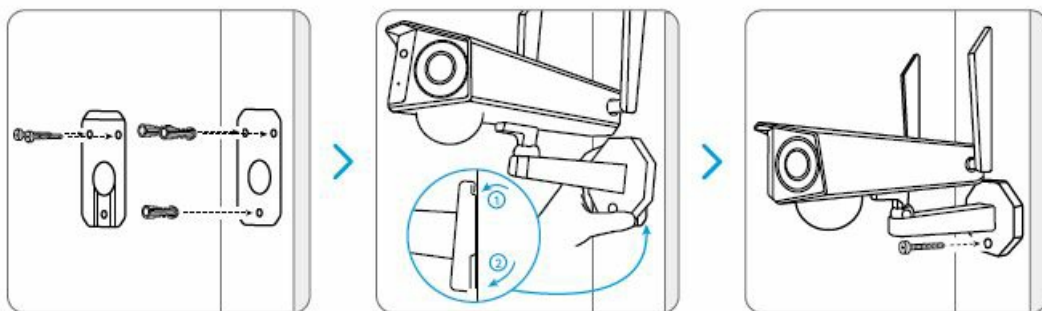
Install the Camera



- Install the camera 2-3 meters (7-10 ft) above the ground. This height maximizes the detection range of the PIR motion sensor.
- For better motion detection performance, please install the camera angularly.

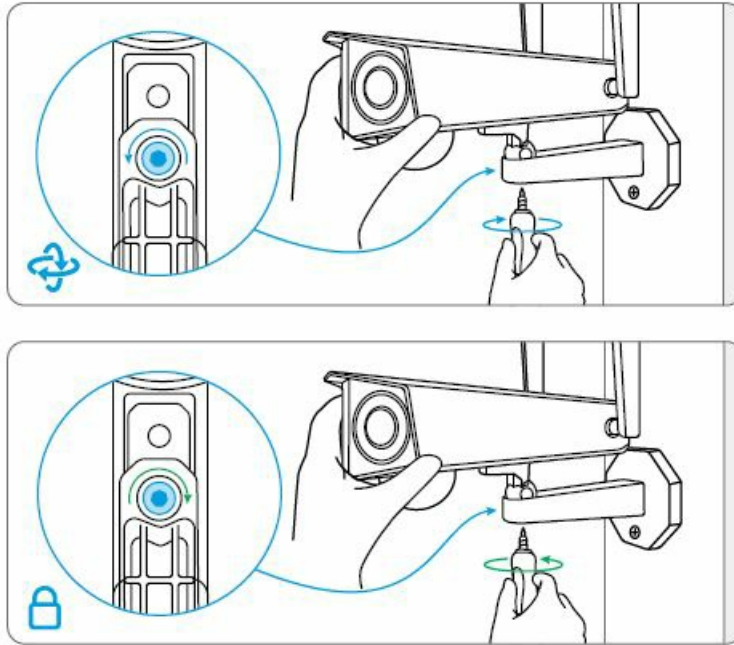
NOTE: If a moving object approaches the PIR sensor vertically, the camera may fail to detect motion.

Mount the Camera to the Wall



Drill holes in accordance with the mounting template. Secure the mounting plate to the wall with the upper two screws and hang the camera on it. Then lock the camera in position with the lower screw

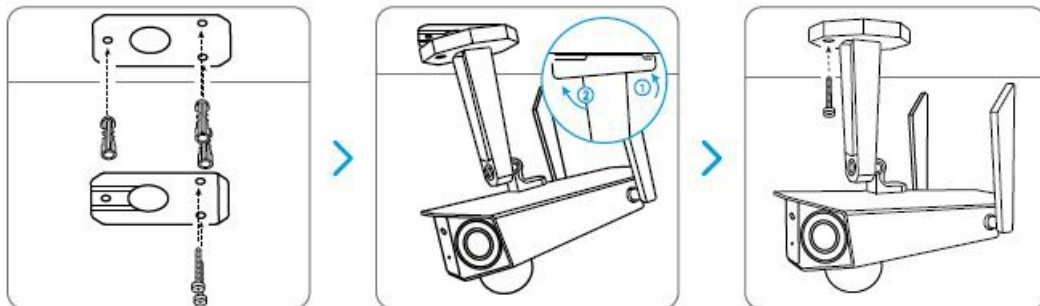
NOTE: Use the drywall anchors included in the package if needed



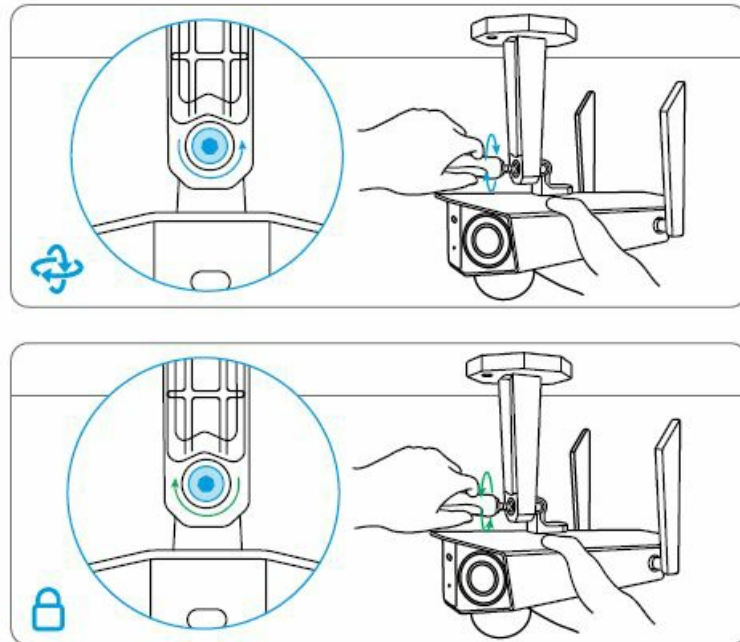
- To get the best field of view, loosen the adjustment screw on security mount and turn the camera.
- Stiffen the adjustment screw to lock the camera.

Mount the Camera to Ceiling

NOTE: The camera can't be adjusted horizontally when ceiling mounted. Please adjust the camera angle before fixing it

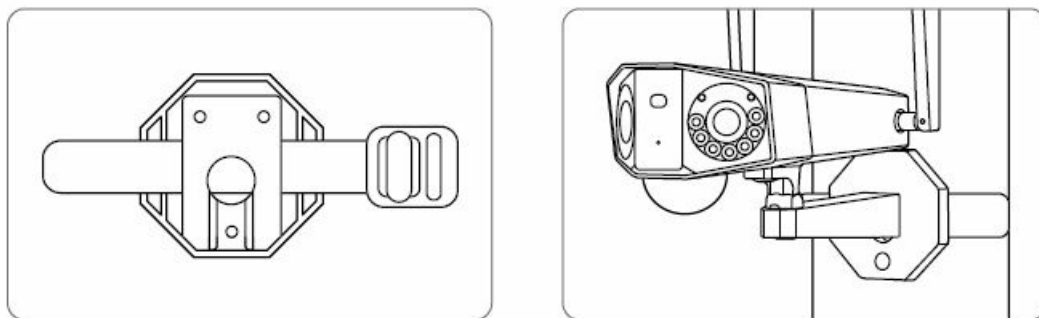


- Drill holes in accordance with the mounting template, Secure the mounting plate to the wall with the upper two screws and hang the camera on it. Then lock the camera in position with the lower screw
- To get the best field of view, loosen the adjustment screw on security mount and turn the camera.



- Stiffen the adjustment screw to lock the camera.

Install the Camera with Loop Strap



Thread the loop strap through the slots and fasten the strap. It is the most recommended installation method if you plan to mount the camera to a tree

Safety Instructions of Battery Usage

Reolink Duo 2 is not designed for running 24/7 at full capacity or around-the-clock live streaming. It's designed to record motion events and to live view remotely only when you need it. Learn useful tips on how to extend the battery life in this post: <https://support.reolink.com/hc/en-us/articles/360006991893>

1. The battery is built-in, so do not remove it from the camera.
2. Charge the rechargeable battery with a standard and high-quality DC 5V/9V battery charger or Reolink solar panel. Do not charge the battery with solar panels from any other brands.
3. Charge the battery when temperatures are between 0°C and 45°C and always use the battery when temperatures are between -20°C and 60°C.
4. Do not charge, use or store the battery near any ignition sources, such as fire or heaters.
5. Do not use the battery if it gives off an odor, generates heat, becomes discolored or deformed, or appears abnormal in any ways. If the battery is being used or charged, turn off the power switch or remove the charger immediately, and stop using it.
6. Always follow the local waste and recycle laws when you get rid of the used battery.

Troubleshooting

Camera is not Powering on

If your camera is not turning on, please apply the following solutions:

- Make sure the power switch is turned on.
- Charge the battery with a DC 5V/2A power adapter. When the green light is on, the battery is fully charged.

If these won't work, please contact Reolink Support <https://support.reolink.com>

Failed to Scan QR Code on the Phone

If the camera cannot scan the QR code on your phone, please try the following solutions:

- Vary the distance between your camera and the mobile phone so that the camera can focus better.
- Try to scan the QR code under sufficient lighting.
- If these won't work, please contact Reolink Support <https://support.reolink.com>

Failed to Connect to WiFi During Initial Setup Process

If the camera fails to connect to WiFi, please try the following solutions:

- Ensure that you have entered the correct WiFi password.
- Put the camera closer to your router to ensure a strong WiFi signal.
- Change the encryption method of the WiFi network to WPA2-PSK/WPA-PSK (safer encryption) on your router interface.
- Change your WiFi SSID or password and make sure that SSID is within 31 characters and password is within 64 characters.
- Set your password using only the characters available on the keyboard.
- If these won't work, please contact Reolink Support <https://support.reolink.com>

Specification

Video

- Field of View: Horizontal: 170°; Vertical: 50°
- Spotlight: 8pcs/4.4W/6500K/440 Lumens
- PIR Detection Distance: Adjustable up to 10 m (33 ft)
- Audio Alert: Customized verbal alerts
- Other Alerts: Instant email alerts and push notifications

General

- Operating Temperature: -10 to 55° C (14° to 131° F)

- Size: 81x103x195mm
- Weight (Battery included): 720g

Notification of Compliance

FCC Compliance Statement

This device complies with Part 15 of the FCC Rules. Operation is subject to the following two conditions: (1) this device may not cause harmful interference, and (2) this device must accept any interference received, including interference that may cause undesired operation. Changes or modifications not expressly approved by the party responsible for compliance could void the user's authority to operate the equipment.

NOTE: This equipment has been tested and found to comply with the limits for a Class B digital device, pursuant to part 15 of the FCC Rules. These limits are designed to provide reasonable protection against harmful interference in a residential installation. This equipment generates, uses and can radiate radio frequency energy and, if not installed and used in accordance with the instructions, may cause harmful interference to radiocommunications. However, there is no guarantee that interference will not occur in a particular installation. If this equipment does cause harmful interference to radio or television reception, which can be determined by turning the equipment off and on, the user is encouraged to try to correct the interference by one or more of the following measures

- Reorient or relocate the receiving antenna.
- Increase the separation between the equipment and receiver.
- Connect the equipment into an outlet on a circuit different from that to which the receiver is connected.
- Consult the dealer or an experienced radio/ TV technician for help.

FCC RF warning statement:

The device has been evaluated to meet general RF exposure requirement. The device can be used in portable exposure condition without restriction.

Simplified EU Declaration of Conformity

Reolink declares that this device is in compliance with the essential requirements and other relevant provisions of Directive 2014/53/EU.

Correct Disposal of This Product

This marking indicates that this product should not be disposed with other household wastes throughout the EU. To prevent possible harm to the environment or human health from uncontrolled waste disposal, recycle it responsibly to promote the sustainable reuse of material resources. To return your used device, please use the return and collection systems or contact the retailer where the product was purchased. They can take this product for environment safe recycling.

Limited Warranty

This product comes with a 2-year limited warranty that is valid only if purchased from Reolink Official Store or a Reolink authorized reseller. Learn more: <https://reolink.com/warranty-and-return/>.

NOTE: We hope that you enjoy the new purchase. But if you are not satisfied with the product and plan to return, we strongly suggest that you reset the camera to factory default settings and take out the inserted SD card before returning.

Terms and Privacy

Use of the product is subject to your agreement to the Terms of Service and Privacy Policy at reolink.com Keep out of reach of children

End User License Agreement

By using the Product Software that is embedded on the Reolink product, you agree to the terms of this End User License Agreement ("EULA") between you and Reolink. Learn more: <https://reolink.com/eula/>.

ISED Radiation Exposure Statement

- This equipment complies with RSS-102 radiation exposure limits set forth for an uncontrolled environment.
- This equipment should be installed and operated with minimum distance 20cm between the radiator & your body.


OPERATING FREQUENCY (the maximum transmitted power)

- 2.4GHz: 2412-2462MH (18dBm)
- 5GHz: 5180-5240MHz (16.09dBm)
- 5GHz: 5745-5825MHz (14.47dBm)

Technical Support

If you need any technical help, please visit our official support site and contact our support team before returning the products, <https://support.reolink.com>.

Documents / Resources

	reolink B0CJ2CK6QS Duo 2 Solar Security Camera [pdf] User Guide B0CJ2CK6QS, B0BBTBXKVC, B0BBTD46YL, B0CJ2CK6QS Duo 2 Solar Security Camera, B0CJ2CK6QS, Duo 2 Solar Security Camera, Solar Security Camera, Security Camera, Camera
---	--

References

- [🔗 Reolink Official: Security Cameras and Systems for Home & Business](#)
- [🔗 Reolink Official: Security Cameras and Systems for Home & Business](#)
- [🔗 Warranty & Return – Reolink](#)
- [🔗 Reolink Support - Official Reolink Help Center](#)
- [🔗 How to Extend the Battery Life of Reolink Battery Powered Cameras](#)
- [🔗 User Manual](#)