



reolink B0B7JBQW8C WiFi Floodlight User Guide

[Home](#) » [reolink](#) » reolink B0B7JBQW8C WiFi Floodlight User Guide 

Contents

- 1 B0B7JBQW8C WiFi Floodlight
- 2 Product Information
- 3 What's in the Box
- 4 Floodlight Introduction
- 5 Set up the Floodlight
- 6 Install the Floodlight
- 7 Mount the Floodlight to the Wall
- 8 Mounting Height: 2-3 Meters
- 9 Troubleshooting
- 10 Specification
 - 10.1 Hardware Features
- 11 Notification of Compliance
 - 11.1 FCC Compliance Statement
- 12 Correct Disposal of This Product
- 13 Limited Warranty
- 14 Terms and Privacy
- 15 Technical Support
- 16 Documents / Resources
 - 16.1 References
- 17 Related Posts



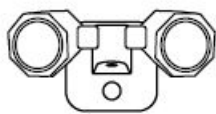


Product Information

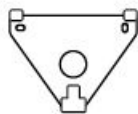
The Reolink Floodlight WiFi is a security device that comes with a speaker, daylight sensor, PIR sensor, status LED, LAN port, reset button, and power port. It is available in different models with varying accessories.

What's in the Box

- Floodlight
- Mounting Plate
- Mounting Hole Template
- 1m Ethernet Cable
- 4.5m Power Extension Cable (WiFi version only)
- Pack of Screws
- Power Adapter (WiFi version only)
- Quick Start Guide



Floodlight



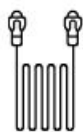
Mounting Plate



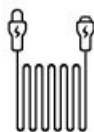
Mounting Hole
Template



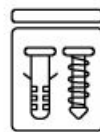
Power Adapter *



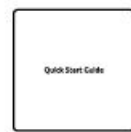
1m
Ethernet Cable



4.5m Power *
Extension Cable



Pack of Screws



Quick Start Guide

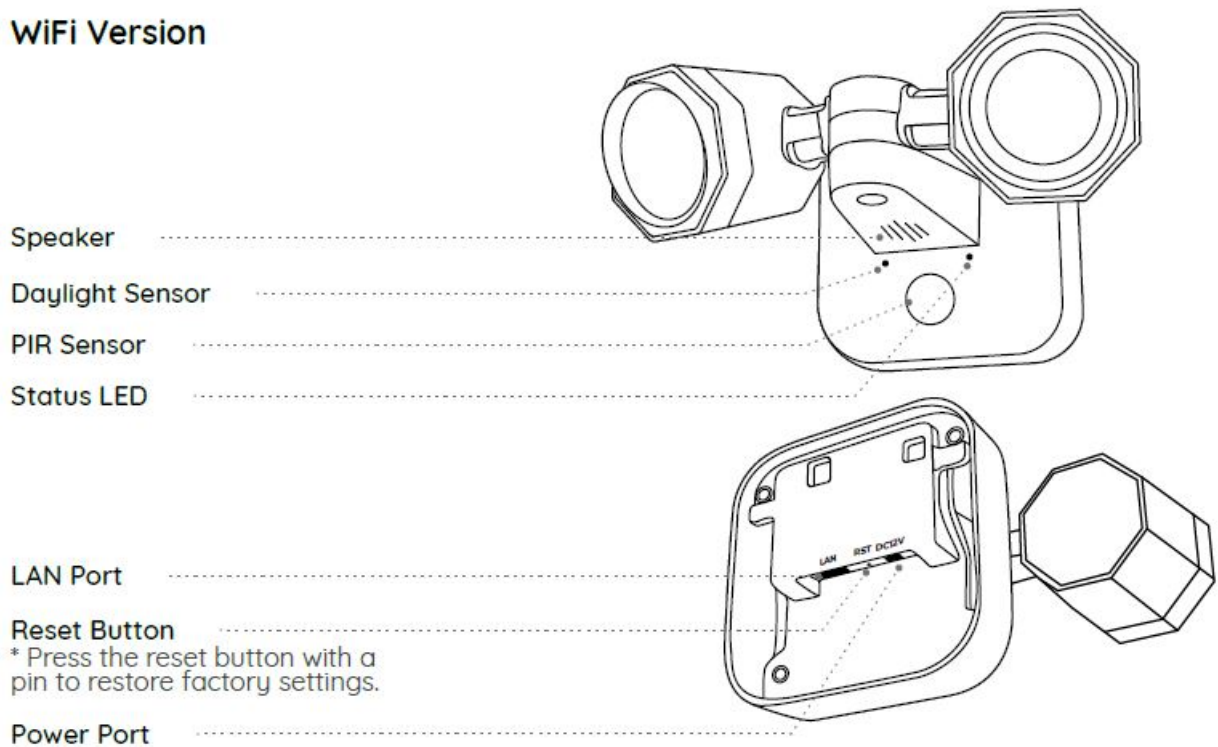
NOTE:

- The power adapter and 4.5m Power Extension Cable only come with WiFi Version.
- Quantity of accessories varies with the product model you purchase.

Floodlight Introduction

WiFi Version

WiFi Version



Set up the Floodlight

Download and launch the Reolink App or Client software, and follow the onscreen instructions to finish initial setup.

1. Download and launch the Reolink App or Client software.
2. Follow the onscreen instructions to finish initial setup.

• On Smartphone

Scan to download the Reolink App.

• On PC

Download path of the Reolink Client: Go to <https://reolink.com> > Support > App & Client.



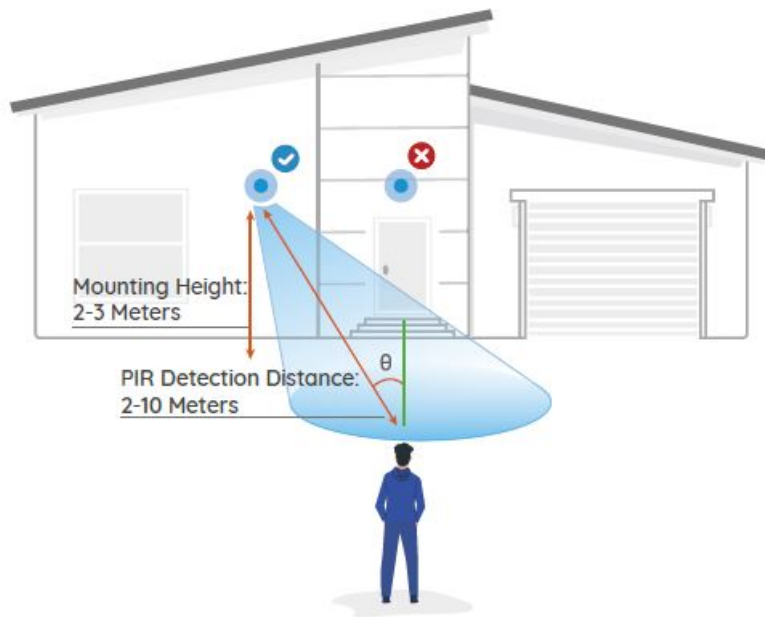
Note:

- Scan the QR code in the Quick Start Guide to download the Reolink App.

- When setting up the WiFi Floodlight, you need to follow the onscreen instructions to finish the WiFi configuration first.
- If you are connecting the Floodlight to a Reolink NVR, please set up the Floodlight via the NVR interface.

Install the Floodlight

- Install the Floodlight 2-3 meters (7-10 ft) above the ground. This height maximizes the detection range of the PIR motion sensor.
- For better motion detection performance, please install the floodlight angularly.

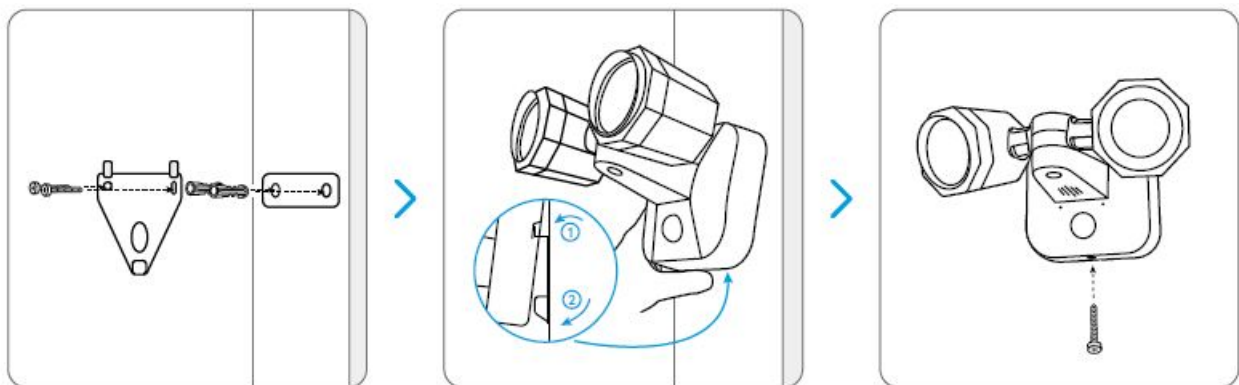


Note:

The floodlight may fail to detect motion if a moving object approaches the PIR sensor vertically. If a moving object approaches the PIR sensor vertically, the floodlight may fail to detect motion.

Mount the Floodlight to the Wall

1. Drill holes in accordance with the mounting template.
2. Secure the mounting plate to the wall with the upper two screws and hang the floodlight on it.
3. Then lock the floodlight in position with the lower screw.



Mounting Height: 2-3 Meters

PIR Detection Distance: 2-10 Meters

1. Drill holes in accordance with the mounting template.
2. Secure the mounting plate to the wall with the upper two screws and hang the floodlight on it.
3. Lock the floodlight in position with the lower screw.

Troubleshooting

If the floodlight is not powering on, try the following: If your Floodlight is not powering on, please try the following solutions:

- Check if the power adapter is properly connected.
- Check if the power outlet is working.
- Press the reset button with a pin to restore factory settings.

If the problem persists, contact Reolink Support.

For WiFi Floodlight

- Plug the floodlight into a different outlet and see if it works.
- Power on the floodlight with another working 12V 2A DC adapter and see if it works.

If the problem is not solved, please contact Reolink Support.

Specification

The Reolink Floodlight WiFi complies with Part 15 of the FCC Rules and Directive 2014/53/EU.

Hardware Features

- **Light:** 40pcs/18W
- **Dimension:** 216X118X160mm
- **Weight:** 635g
- **Working Temperature:** -10°C~+55°C (14°F~131°F)

Notification of Compliance

FCC Compliance Statement

This device complies with Part 15 of the FCC Rules. **Operation is subject to the following two conditions:**

- this device may not cause harmful interference,
- and this device must accept any The device must not cause harmful interference and must accept any interference received, including interference that may cause undesired operation. Changes or modifications not approved by the party responsible for compliance could void the user's authority to operate the equipment.

interference received, including interference that may cause undesired operation.

NOTE: This equipment has been tested and found to comply with the limits for a Class B digital device, pursuant to part 15 of the FCC Rules. These limits are designed to provide reasonable protection against harmful interference in a residential installation.

This equipment generates uses and can radiate radio frequency energy and, if not installed and used in accordance with the instructions, may cause harmful interference to radio communications. However, there is no guarantee that interference will not occur in a particular installation. **If this equipment does cause harmful interference to radio or television reception, which can be determined by turning the equipment off and on, the user is encouraged to try to correct the interference by one or more of the following measures:**

- Reorient or relocate the receiving antenna.
- Increase the separation between the equipment and the receiver.
- Connect the equipment into an outlet on a circuit different from that to which the receiver is connected.
- Consult the dealer or an experienced radio/TV technician for help.

Changes or modifications not expressly approved by the party responsible for compliance could void the user's authority to operate the equipment.

FCC RF Exposure Warning Statements

This equipment complies with FCC radiation exposure limits set forth for an uncontrolled environment. This equipment shall be installed and operated with a minimum distance 20cm between the radiator & body.

Correct Disposal of This Product



■ This product should not be disposed of with other household wastes. Recycle it responsibly to promote the sustainable reuse of material resources. To return your used device, use the return and collection systems or contact the retailer where the product was purchased. This marking indicates that this product should not be disposed of with other household wastes throughout the EU. To prevent possible harm to the environment or human health from uncontrolled waste disposal, recycle it responsibly to promote the sustainable reuse of material resources. To return your used device, please use the return and collection systems or contact the retailer where the product was purchased. They can take this product for environmentally safe recycling.

Simplified EU Declaration of Conformity



Reolink declares that the WiFi floodlight is in compliance with the essential requirements and other relevant provisions of Directive 2014/53/EU, and the floodlight is in compliance with Directive 2014/30/EU.

Limited Warranty

This product comes with a 2-year limited warranty that is valid only if purchased from Reolink Official Store or a Reolink authorized reseller. Learn more:

<https://reolink.com/warranty-and-return/>.

NOTE: We hope that you enjoy the new purchase. But if you are not satisfied with the product and plan to return, we strongly suggest that you reset the floodlight to factory default settings before returning.

Terms and Privacy

Use of the product is subject to your agreement to the Terms of Service and Privacy Policy at reolink.com. Keep

out of reach of children.

End User License Agreement

By using the Product Software that is embedded on the Reolink product, you agree to the terms of this End User License Agreement (“EULA”) between you and Reolink. **Learn more:** <https://reolink.com/eula/>.

ISED Statements

This device contains license-exempt transmitter(s)/receiver (s) that comply with Innovation, Science, and Economic Development Canada’s license-exempt RSS(s). **Operation is subject to the following two conditions:**

1. This device may not cause interference.
2. This device must accept any interference, including interference that may cause undesired operation of the device.

Radio Frequency Exposure Statement for IC

The device has been evaluated to meet general RF exposure requirements. The device can be used in mobile exposure conditions. The min separation distance is 20cm.

OPERATING FREQUENCY (For WiFi Version) (the maximum transmitted power)

2412MHz — 2462MHz


Technical Support

If you need any technical help, please visit our official support site and contact our support team before returning the products:

<https://support.reolink.com>.

@ReolinkTech

Documents / Resources

	reolink B0B7JBQW8C WiFi Floodlight [pdf] User Guide B0B7JBQW8C WiFi Floodlight, B0B7JBQW8C, WiFi Floodlight, Floodlight
---	--

References

- [🔗 Reolink: Global Innovator in Smart Home Security and Camera Solutions](#)
- [🔗 Reolink: Global Innovator in Smart Home Security and Camera Solutions](#)
- [🔗 Warranty & Return – Reolink](#)
- [🔗 Reolink Support - Official Reolink Help Center](#)