



# reolink Argus PT Wi-Fi Camera 3MP PIR Motion Sensor Instruction Manual

[Home](#) » [reolink](#) » reolink Argus PT Wi-Fi Camera 3MP PIR Motion Sensor Instruction Manual 

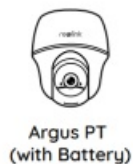
reolink Argus PT Wi-Fi Camera 3MP PIR Motion Sensor Instruction Manual



## Contents

- [1 What's in the Box](#)
- [2 Camera Introduction](#)
- [3 Set up the Camera](#)
- [4 Charge the Battery](#)
- [5 Install the Camera](#)
- [6 Notes on PIR Motion Sensor](#)
- [7 Important Notes on Rechargeable Battery Usage](#)
- [8 Troubleshooting](#)
- [9 Specifications](#)
- [10 Notification of Compliance](#)
- [11 Limited Warranty](#)
- [12 Documents / Resources](#)
  - [12.1 References](#)
- [13 Related Posts](#)

## What's in the Box



Surveillance Sign



Quick Start Guide



Pack of Screws



Micro USB Cable

## Camera Introduction

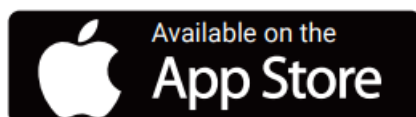


## Set up the Camera

1. Install the antenna and power the camera on.
2. Download and launch the Reolink App or Client software and follow the on-screen instructions to finish setup

## On Smartphone

Scan to download the Reolink App.





## On PC

Download path of the Reolink Client: Go to <https://reolink.com> > Support > App & Client.

## Charge the Battery

Charge the battery with a power adapter.



Charge the battery with Reolink solar panel.



For better weatherproof performance, please always cover the USB charging port with the rubber plug after charging the battery.



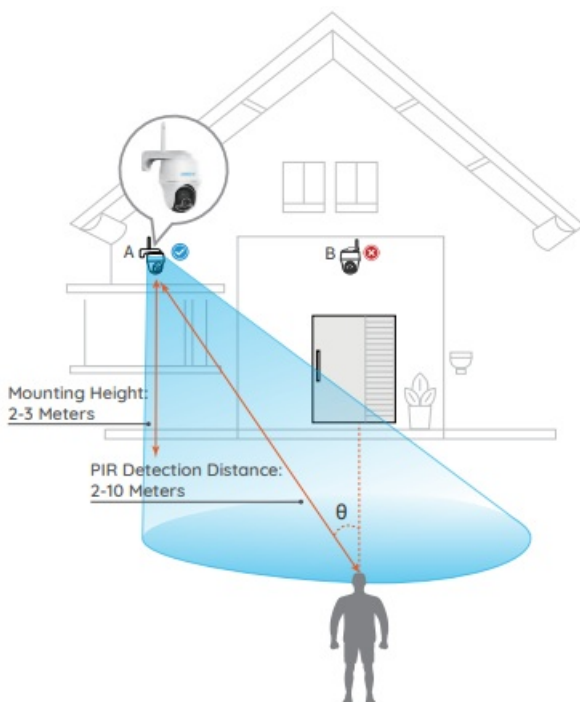
### Charging indicator:

- Orange LED: Charging
- Green LED: Fully charged

**NOTE:** The solar panel is NOT included in the package. You can buy one from Reolink official online stores.

### Install the Camera

- For outdoor use, the Argus PT MUST be installed upside down for better waterproof performance and better PIR motion sensor's efficiency.
- Install the camera 2-3 meters (7-10 ft) above the ground. This height maximizes the detection range of the PIR motion sensor.
- For better motion detection performance, please install the camera angularly.

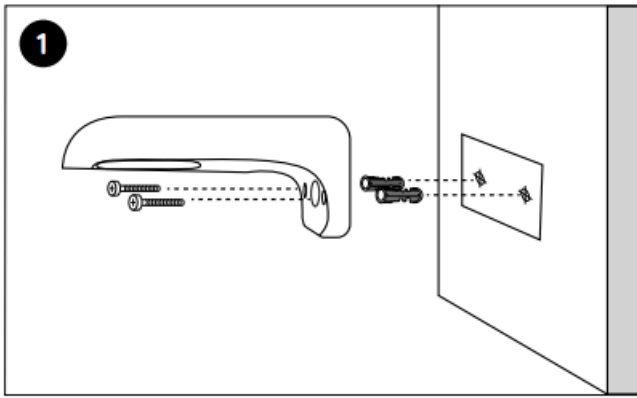


**NOTE:** If a moving object approaches the PIR sensor vertically, the camera may fail to detect motion.

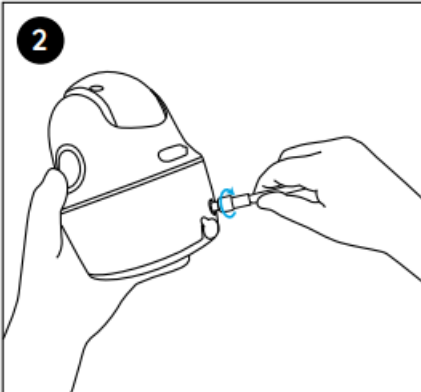
### Mount the Camera

Drill holes in accordance with the mounting hole template and screw the security mount to the wall.

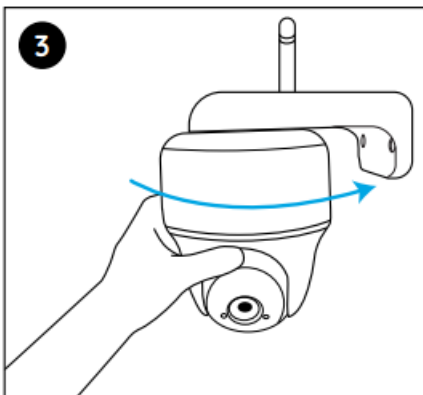
**NOTE:** Use the drywall anchors included in the package if needed.



Install the antenna to the camera.



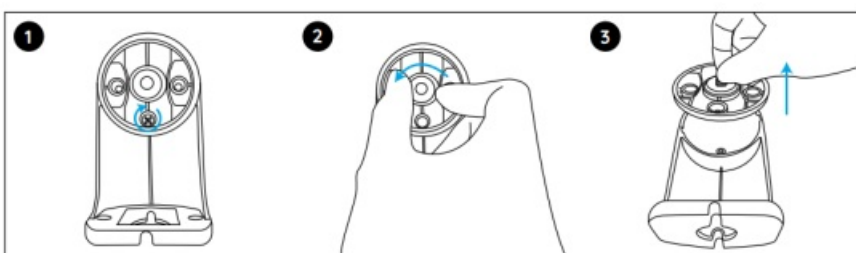
Screw the camera to the security mount and adjust to the proper direction.

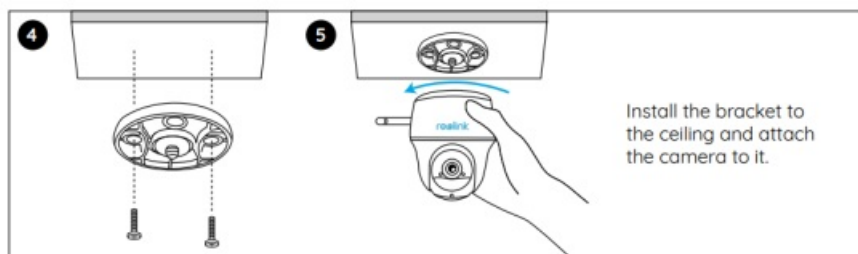


**NOTE:** For better WiFi connection, it is recommended to install the antenna upward or horizontally.

### Mount the Camera to the Ceiling

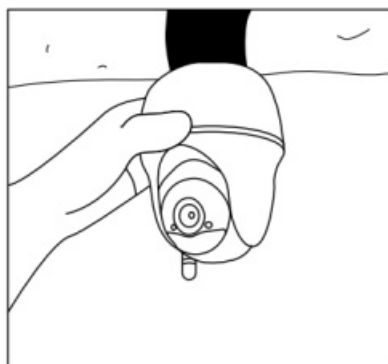
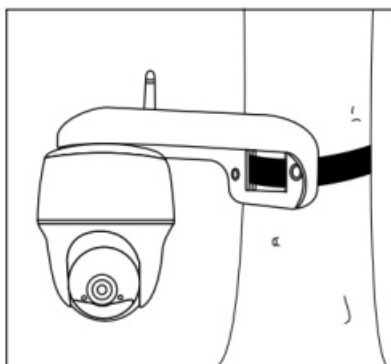
Loosen the screw on security mount and remove the ceiling bracket from the mount.





## Attach the Camera to a Tree

You are allowed to strap the camera to a tree with both the security mount and ceiling bracket. Thread the provided strap to the plate and fasten it to a tree. Next, attach the camera to the plate and you are good to go.



## Notes on PIR Motion Sensor

### PIR Sensor Detection Distance

The PIR detection range can be customized to meet your specific needs. You can refer to the following table to set it up in Device Settings via Reolink App

Sensitivity	Value	Detection Distance (For moving and living things)	Detection Distance (For moving vehicles)
Low	0 – 50	Up to 5 meters (16ft)	Up to 10 meters (33ft)
Mid	51 – 80	Up to 8 meters (26ft)	Up to 12 meters (40ft)
High	81 -100	Up to 10 meters (33ft)	Up to 16 meters (52ft)

**NOTE:** Higher sensitivity offers longer detection distance, but it would lead to more false alarms. It is recommended to set up the sensitivity level to “Low” or “Mid” when you install the camera outdoors.

### Important Notes on Reducing False Alarm

- Do not face the camera towards any objects with bright lights, including sunshine, bright lamp lights, etc.
- Do not place the camera too close to a place with heavy traffic. Based on our numerous tests, the recommended distance between the camera and the vehicle would be 16 meters (52ft).
- Do not place the camera near outlets, including the air conditioner vents, humidifier outlets, the heat transfer vents of projectors, etc.

- Do not install the camera at places with strong wind.
- Do not face the camera towards a mirror.
- Keep the camera at least 1 meter away from any wireless devices, including WiFi routers and phones in order to avoid wireless interference

## **Important Notes on Rechargeable Battery Usage**

Reolink Argus PT is not designed for 24/7 full capacity running or around-the clock live streaming. It's designed to record motion events and remotely view live streaming only when you need it. Please learn some useful ways to maximize the battery life in this post: <https://support.reolink.com/hc/en-us/articles/360006991893>

1. Charge the rechargeable battery with a standard and high-quality DC 5V/9V battery charger or Reolink solar panel. Do not charge the battery with solar panels from any other brands.
2. Charge the battery when temperatures are between 0°C and 45°C and always use the battery when temperatures are between -20°C and 60°C.
3. Keep the USB charging port dry, clean and free of any debris and cover the USB charging port with the rubber plug after the battery has been fully charged.
4. Do not charge, use or store the battery near any ignition sources, such as fire or heaters.
5. Do not disassemble, cut, puncture, short-circuit the battery, or dispose of the battery in water, fire, microwave ovens and pressure vessels.
6. Do not use the battery if it gives off an odor, generates heat, becomes discolored or deformed, or appears abnormal in any ways. If the battery is being used or charged,
7. remove the battery from the device or the charger immediately, and stop using it.
8. Always follow the local waste and recycle laws when you get rid of the used battery.

## **Troubleshooting**

### **Camera Is Not Powering on**

If your camera is not turning on, please apply the following solutions:

- Make sure the power switch is turned on.
- Charge the battery with a DC 5V/2A power adapter. When the green light is on, the battery is fully charged.

If these won't work, contact Reolink Support <https://support.reolink.com/>.

### **Failed to Scan QR Code on Smartphone**

If you fail to scan the QR code on your phone, please try the following solutions:

- Remove the protective film on the lens of the camera.
- Wipe the camera lens with a dry paper/towel/tissue.
- Vary the distance between your camera and the mobile phone so that the camera can focus better.
- Try to scan the QR code under sufficient lighting.

If these won't work, contact Reolink Support <https://support.reolink.com/>.

## WiFi Connection Failed During Initial Setup Process

If the camera fails to connect to WiFi, please try the following solutions:

- Please make sure the WiFi band is 2.4GHz, the camera does not support 5GHz.
- Ensure that you have entered the correct WiFi password.
- Put the camera closer to your router to ensure a strong WiFi signal.
- Change the encryption method of the WiFi network to WPA2-PSK/WPA-PSK (safer encryption) on your router interface.
- Change your WiFi SSID or password and make sure that SSID is within 31 characters and password is within 64 characters.
- Set your password using only the characters available on the keyboard.

If these won't work, contact Reolink Support

<https://support.reolink.com/>

## Specifications

### Video

Video Resolution: 1080p HD at 15 frames/sec

Field of View: 105° diagonal

Night Vision: Up to 10m (33 ft)

### PIR Detection & Alerts

PIR Detection Distance:

Adjustable up to 10m (33ft)

PIR Detection Angle: 90° horizontal

Audio Alert: Customized voice-recordable alerts

Other Alerts:

Instant email alerts and push notifications

### General

Operating Frequency: 2.4 GHz WiFi

Operating Temperature:

-10°C to 55°C (14°F to 131°F)

Weather Resistance:

IP64 certified weatherproof

Size: 98 x 112 mm

Weight (Battery included): 470g (16.5 oz)

## Notification of Compliance

### FCC Compliance Statement


This device complies with Part 15 of FCC Rules. Operation is subject to the following two conditions: (1) this device may not cause harmful interference, and (2) this device must accept any interference received, including interference that may cause undesired operation. For more information, visit: <https://reolink.com/fcc-compliance-notice/>



## CE Simplified EU Declaration of Conformity

Reolink declares that this device is in compliance with the essential requirements and other relevant provisions of Directive 2014/53/EU.

### Correct Disposal of This Product

 This marking indicates that this product should not be disposed with other household wastes throughout the EU. To prevent possible harm to the environment or human health from uncontrolled waste disposal, recycle it responsibly to promote the sustainable reuse of material resources. To return your used device, please use the return and collection systems or contact the retailer where the product was purchased. They can take this product for environment safe recycling.

### Limited Warranty

This product comes with a 2-year limited warranty that is valid only if purchased from Reolink Official Store or a Reolink authorized reseller. Learn more: <https://reolink.com/warranty-and-return/>.

**NOTE:** We hope that you enjoy the new purchase. But if you are not satisfied with the product and plan to return, we strongly suggest that you reset the camera to factory default settings and take out the inserted SD card before returning.

### Terms and Privacy

Use of the product is subject to your agreement to the Terms of Service and Privacy Policy at [reolink.com](https://reolink.com). Keep out of reach of children.

### End User License Agreement

By using the Product Software that is embedded on the Reolink product, you agree to the terms of this End User License Agreement (“EULA”) between you and Reolink. Learn more: <https://reolink.com/eula/>

### ISED Radiation Exposure Statement

This equipment complies with RSS-102 radiation exposure limits set forth for an uncontrolled environment. This equipment should be installed and operated with minimum distance 20cm between the radiator & your body.


### OPERATING FREQUENCY

(the maximum transmitted power) 2412MHz—2472MHz (18dBm)

### Technical Support

If you need any technical help, please visit our official support site and contact our support team before returning the products, <https://support.reolink.com>.

### Documents / Resources

	<a href="#"><u>reolink Argus PT Wi-Fi Camera 3MP PIR Motion Sensor</u></a> [pdf] Instruction Manual Argus PT, Wi-Fi Camera 3MP PIR Motion Sensor
--	---

## References

- [!\[\]\(95b42f0077faf7439a26242a54e021ec\_img.jpg\) Reolink: Global Innovator in Smart Home Security and Camera Solutions](#)
- [!\[\]\(e097ab4c08b8186dd0908330bbc2dc28\_img.jpg\) Reolink: Global Innovator in Smart Home Security and Camera Solutions](#)
- [!\[\]\(1e9d865c5de095f8e3304757c49e79d7\_img.jpg\) Reolink® Deutschland: Zuverlässige Sicherheitslösungen im DIY-Stil](#)
- [!\[\]\(735b10d724a5f0ec5005c4eb3eb9c9d1\_img.jpg\) Warranty & Return – Reolink](#)
- [!\[\]\(e6250f05bc27fa93236b816562b699f9\_img.jpg\) Reolink Support - Official Reolink Help Center](#)
- [!\[\]\(d190cc638f389909d4b049d6c19e4cb2\_img.jpg\) Reolink Support - Official Reolink Help Center](#)
- [!\[\]\(4d34001966c7597a8c3e4293694bde37\_img.jpg\) How to Extend the Battery Life of Reolink Battery Powered Cameras](#)