



Reolink Argus 3 Pro Battery Powered Smart Camera Instruction Manual

[Home](#) » [reolink](#) » Reolink Argus 3 Pro Battery Powered Smart Camera Instruction Manual 

Contents

- [1 Reolink Argus 3 Pro Battery Powered Smart Camera](#)
- [2 Product Information](#)
- [3 Specs](#)
- [4 Setup and Install](#)
- [5 Set up the Camera on the App](#)
- [6 Install the Camera](#)
- [7 Documents / Resources](#)
 - [7.1 References](#)



Reolink Argus 3 Pro Battery Powered Smart Camera



Product Information

Specifications

- **Spotlight:** 1
- **Status LED:** 2
- **IR LEDs:** 6
- **Lens:** 4
- **Daylight Sensor:** 5
- **Built-in Mic:** 6
- **Built-in PIR Motion Sensor:** 7
- **Reset Button:** 1
- **Power Switch:** 2
- **Micro SD Card Slot:** 3
- **Bracket:** 4
- **Battery Status LED:** 5
- **Micro USB Port:** 6
- **Speaker:** 7

FAQ

- **Q:** What should I do if I can't connect to Wi-Fi during setup?
 - **A:** If you are unable to connect to Wi-Fi during setup, please make sure you have entered the correct Wi-Fi password and that your smartphone is within range of the Wi-Fi signal. You may also try resetting your router and restarting the setup process.

- **Q:** Can I use the camera without a battery?
 - **A:** Yes, the Argus 3 Pro can be operated using either a battery or solar power. If you choose to use solar power, you will need to purchase a separate solar panel.

Get wire-free security anywhere you need it with Argus 3 Pro, a battery or solar operated security camera with motion spotlight and siren. See what's going on in 2K Super HD, enjoy color night vision and stop the crime before it happens.

Specs



1	Spotlight
2	Status LED
3	6 IR LEDs
4	Lens
5	Daylight Sensor
6	Built-in Mic
7	Built-in PIR Motion Sensor



1	Reset Button
2	Power Switch
3	Micro SD Card Slot
4	Bracket
5	Battery Status LED
6	Micro USB Port
7	Speaker

Status Light

Status Light	Camera Status
Red light	Wi-Fi connection failed
Blue light	Wi-Fi connection succeeded
Blinking	Standby status
On	Working status

Setup and Install

Set up the Camera

What's in the Box

Note: The package content may vary and update with different version and platforms, please take the below information only for a reference. And the actual package content are subject to the latest information on the product selling page.

Argus 3 Pro



Argus 3 Pro*1



USB Cable*1



Quick Start Guide*1



Security Bracket*1



Stand Bracket*1



Mounting Template*1



Surveillance Sticker*1



Pack of Screws*1



Reset Needle*1

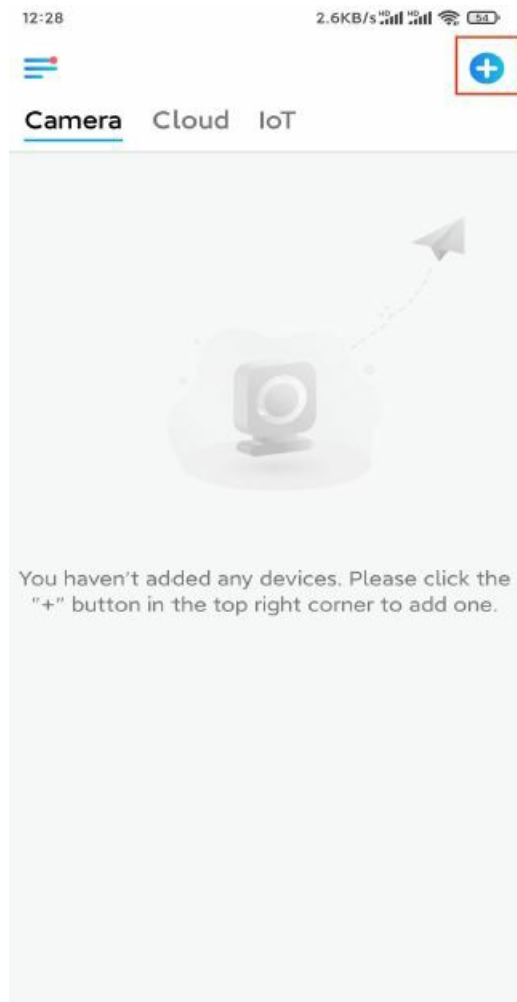


Strap*1

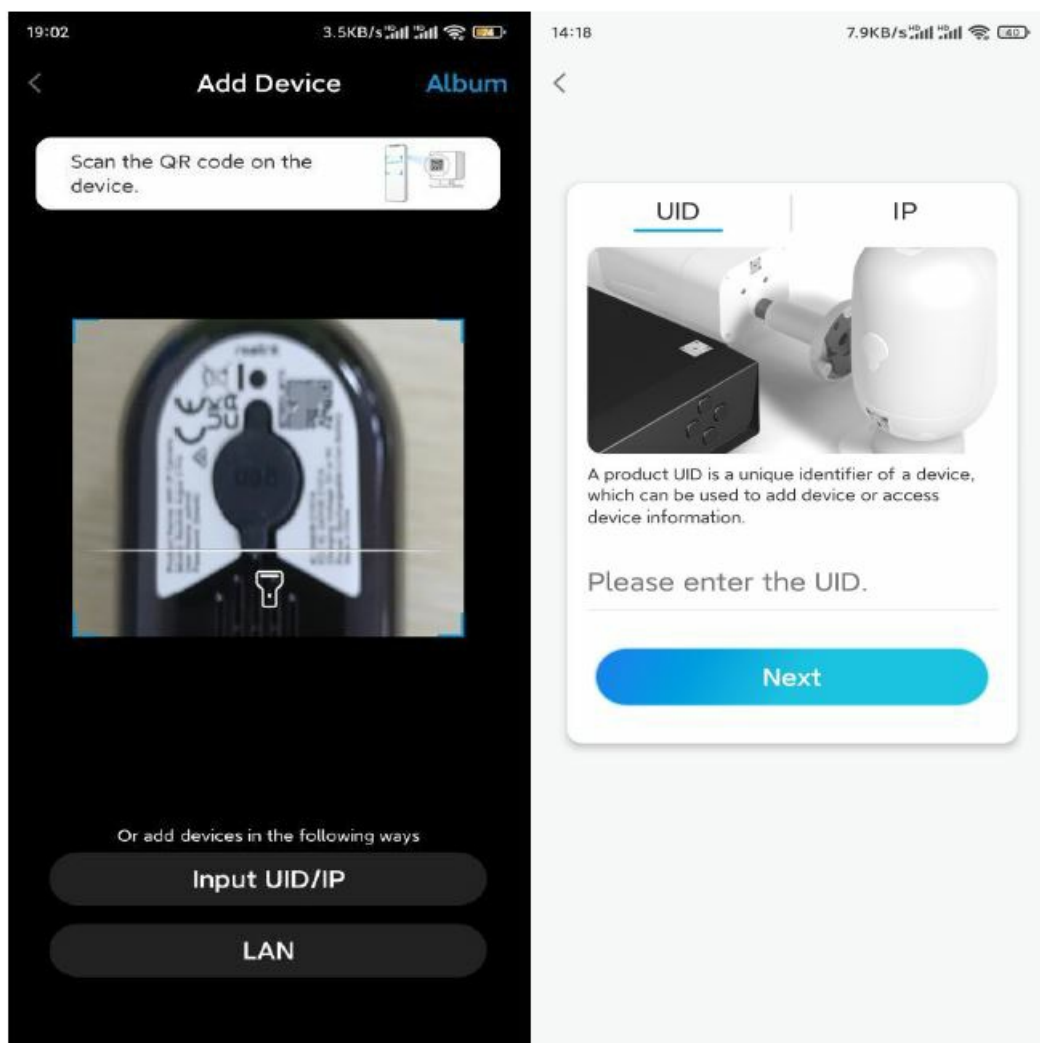
Set up the Camera on the App

Please follow the steps below to do initial setup for the battery-powered cameras via Reolink App.

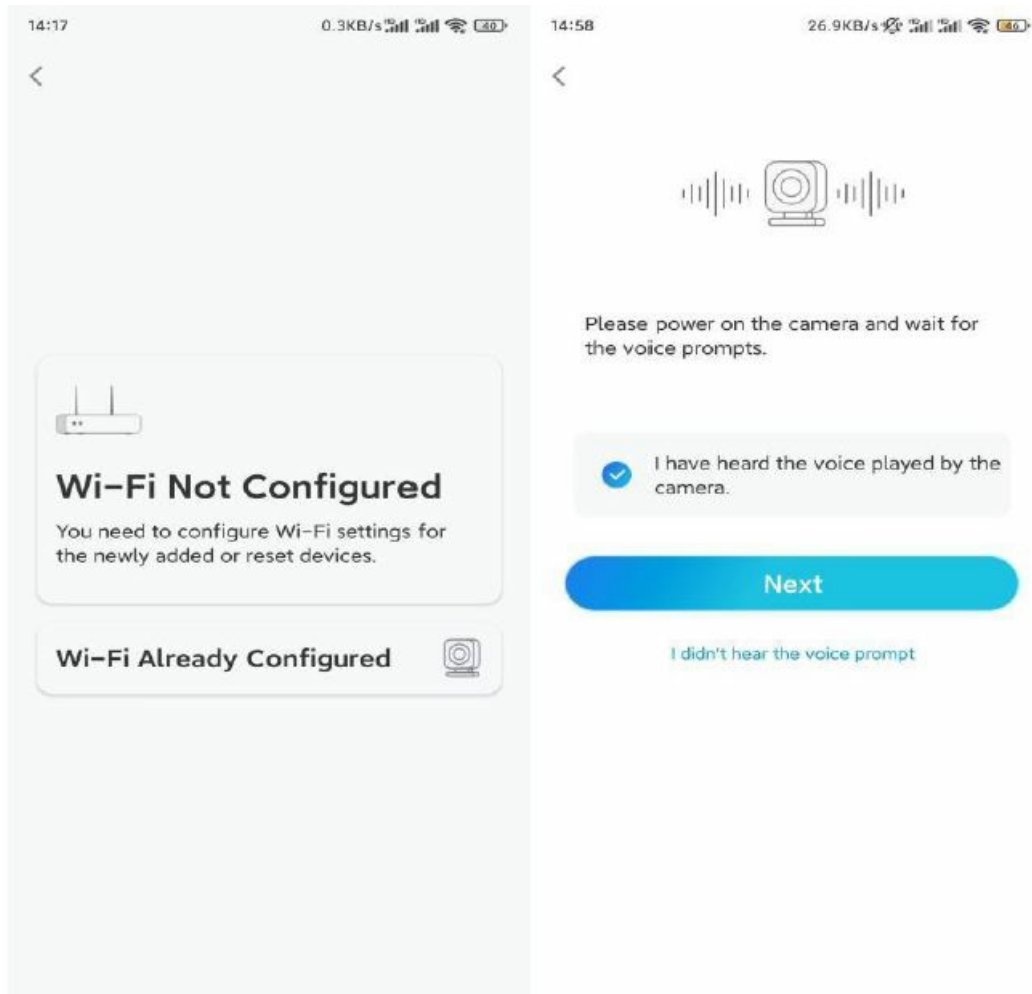
- **Step 1:** Power on the camera. Remember to turn on the power switch on the camera before initial setup except for Argus 2 and Argus Pro. After a startup sound, you will hear a repeated Ding sound or a voice prompt.
 - **Note:** The voice prompt you will hear may be “Welcome to Reolink, please install Reolink app and scan the QR code on the camera” in multilingual versions, or “please run Reolink app, add the camera and set it up”.



- **Step 2:** Tap the icon + in the top right corner to start the initial setup.



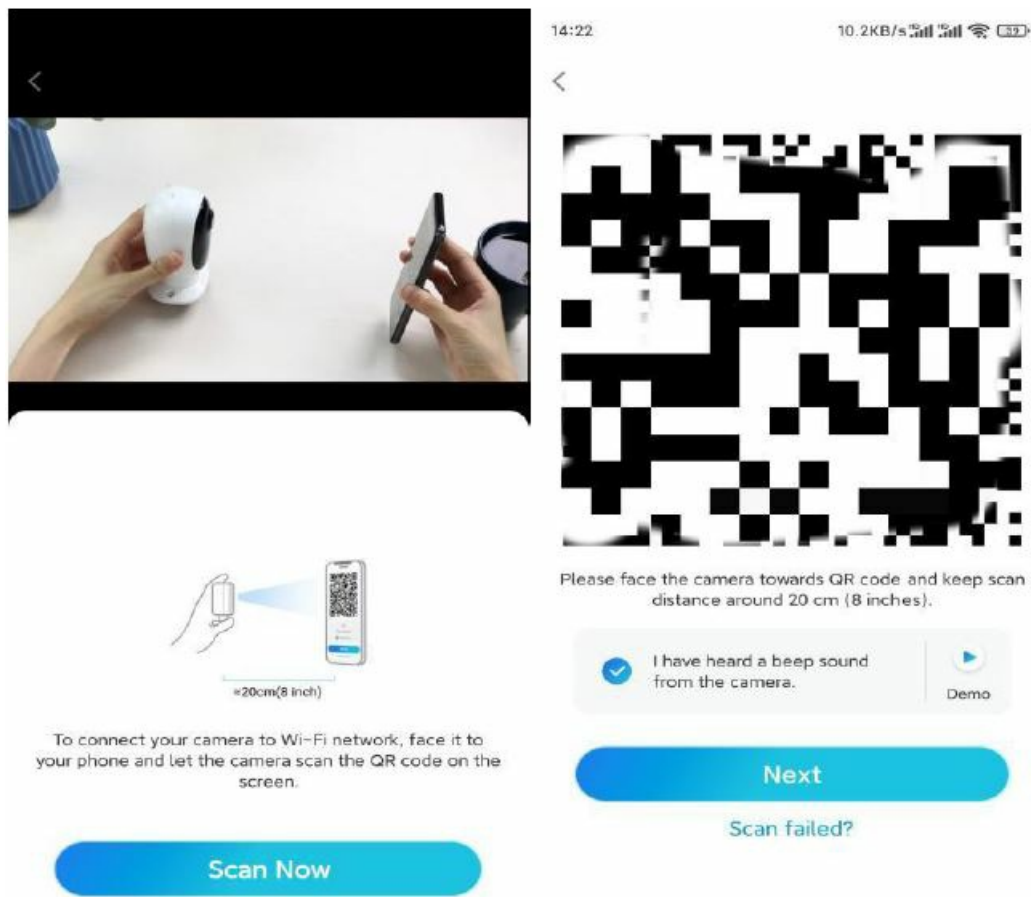
- **Step 3:** Scan the QR code on the back of the camera. You may tap Light to enable a flashlight when setting up the camera in a dark environment. If the phone doesn't respond, please tap Input UID/IP and then manually type in the UID (16-digit characters under the QR code of the camera). Then click Next.



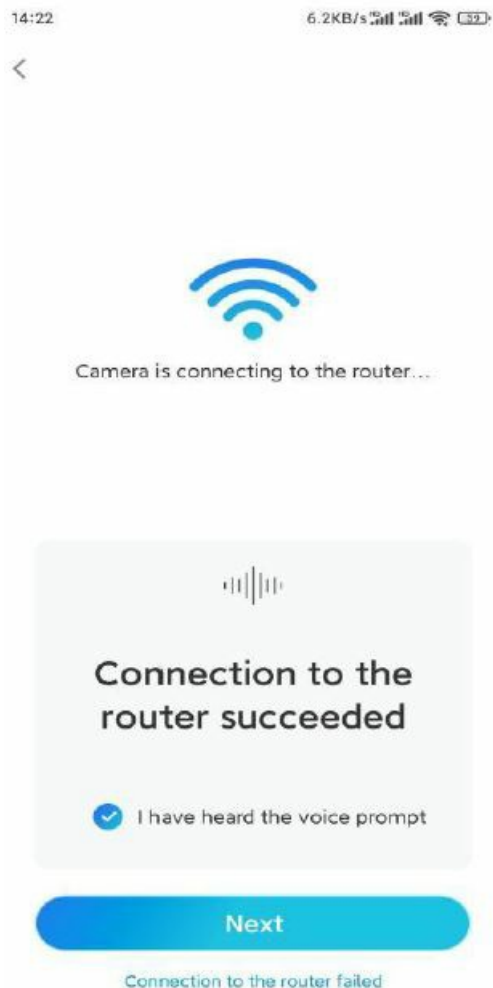
- **Step 4:** Select Wi-Fi Not Configured. If you hear a voice prompt played by the camera, please tick correspondingly and then tap Next.



- **Step 5:** Enter the WiFi password of the selected WiFi network (you may tap the right eye icon to see and double-check the password) and tap Next.
 - **Note:** Only Argus 3 Pro, Argus PT (5/2.4GHz), Reolink Duo (Battery) and Reolink TrackMix support 5GHz/2.4GHz Dual-Band WiFi connection.

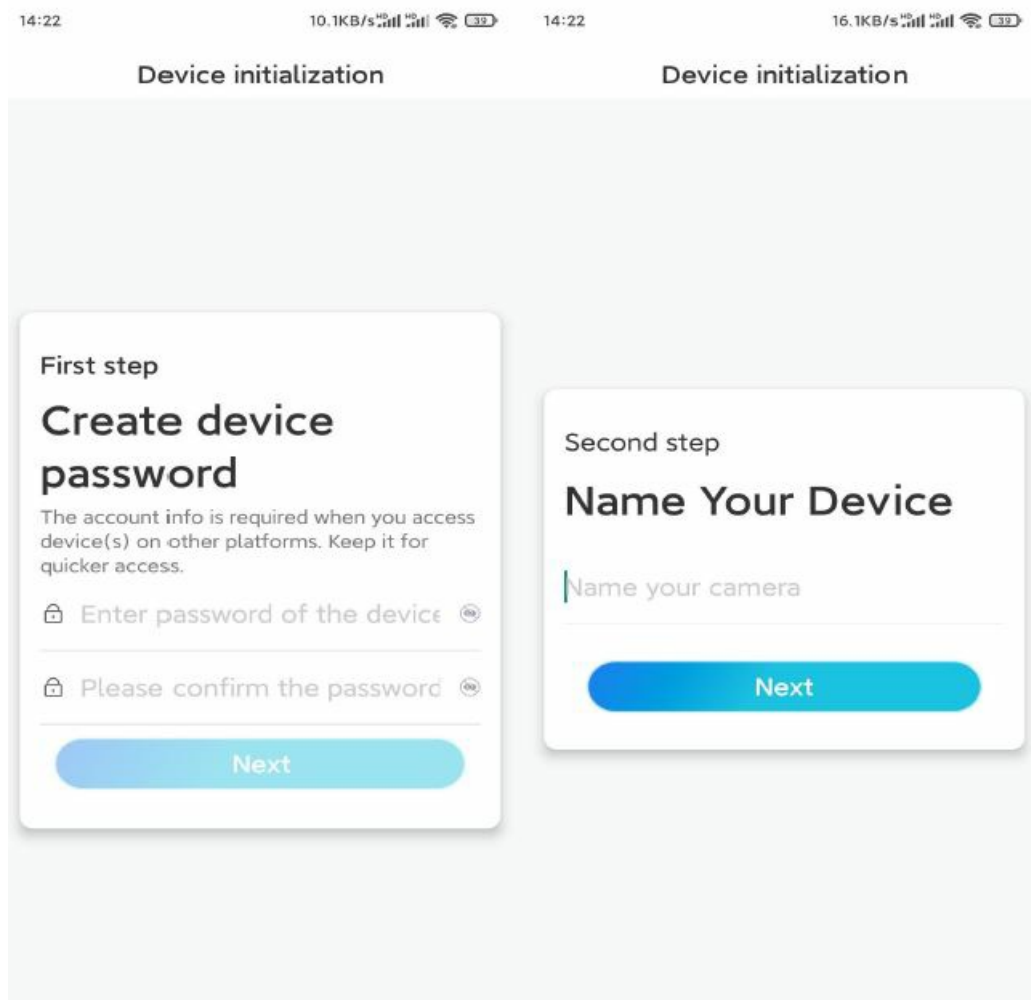


- **Step 6:** Tap Scan Now. Place the QR code on your phone in front of the camera's lens at a distance of about 20 cm (8 inches) and let the camera scan the QR code.

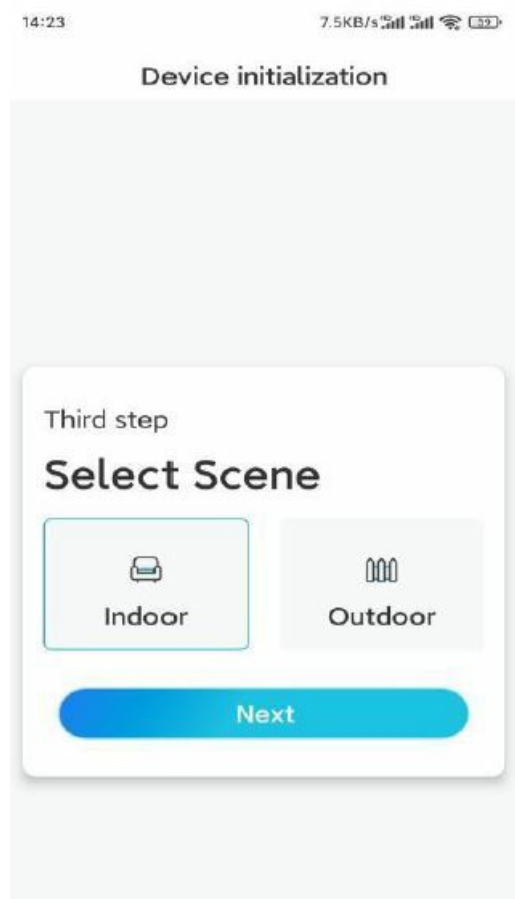


- **Step 7:** Wait around 60 seconds for the camera to connect to the router. After hearing "connection to the router

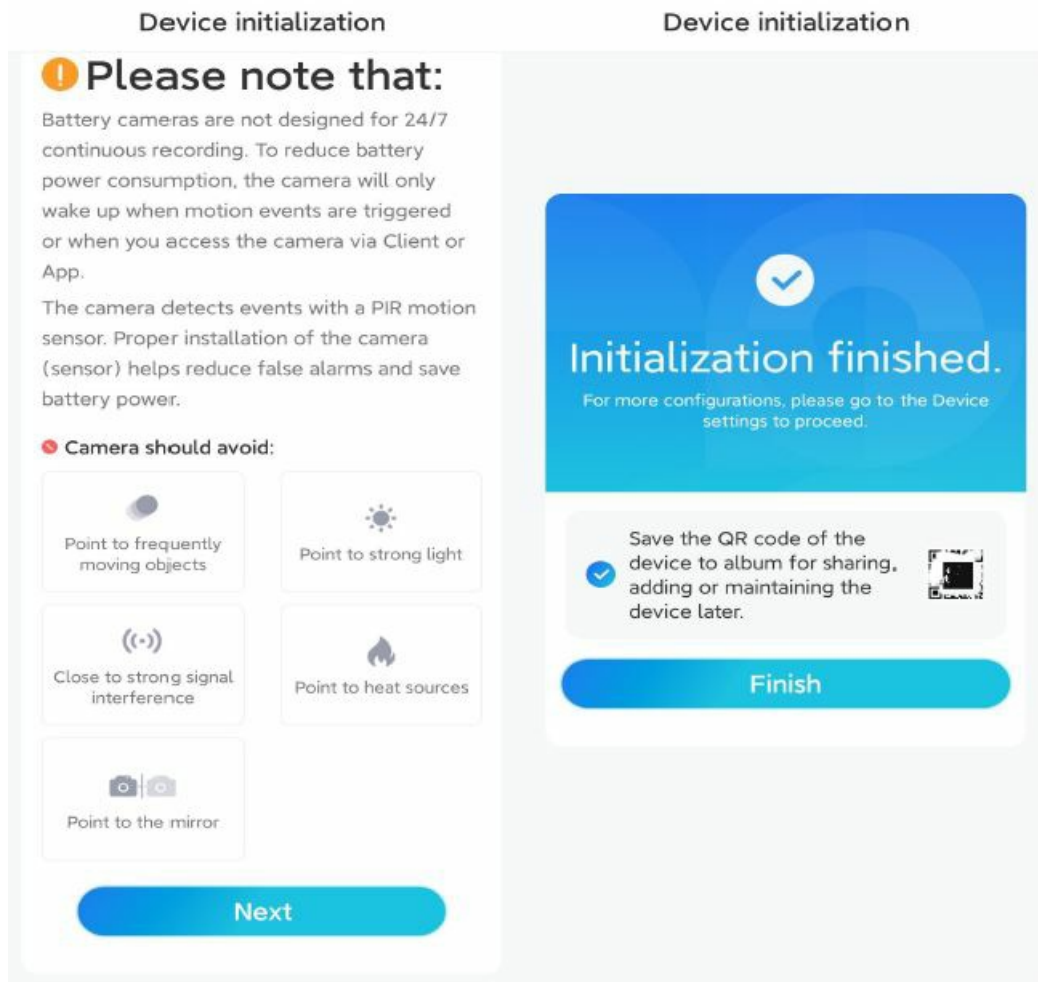
succeeded”, tick correspondingly and tap Next.



- **Step 8:** Create a login password and then name your camera.



- **Step 9:** Select a scene according to the place where your camera will be installed, then click Next.



- **Step 10:** Read the note below and then tap Finish to complete the initialization of your camera.
 - Once the initial setup is completed, you may choose a good position to mount your camera.

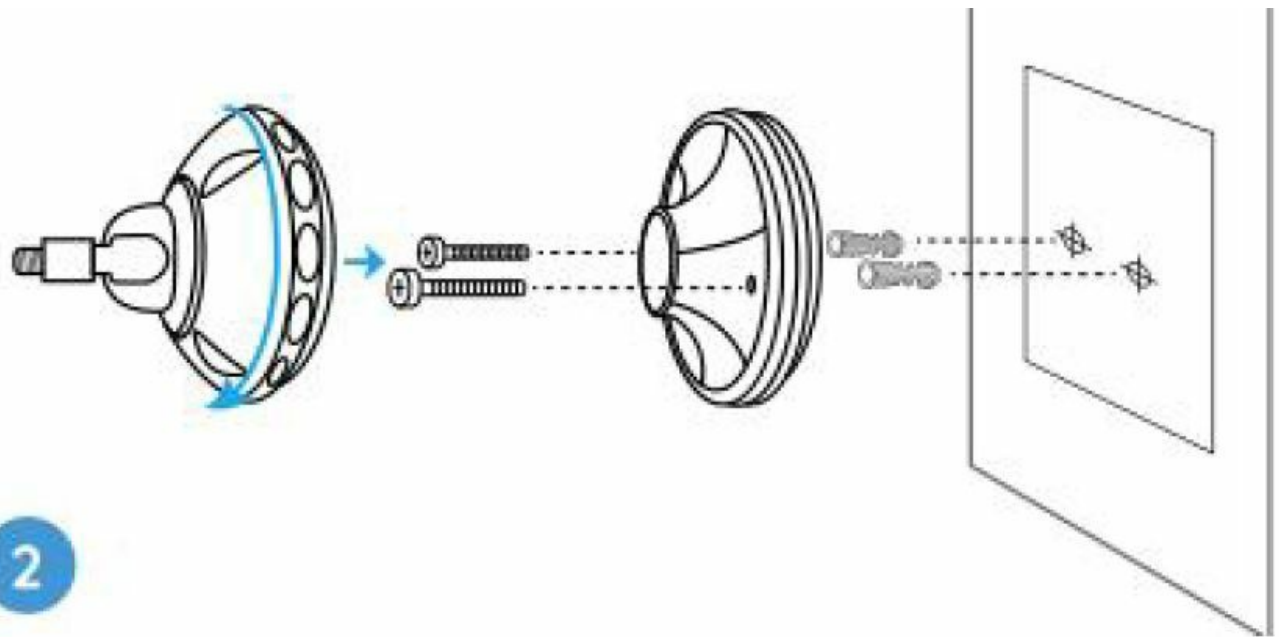
Install the Camera

We offer you guides on three different scenes in which the camera could be installed. Check out them respectively.

Mount the Camera to the Wall

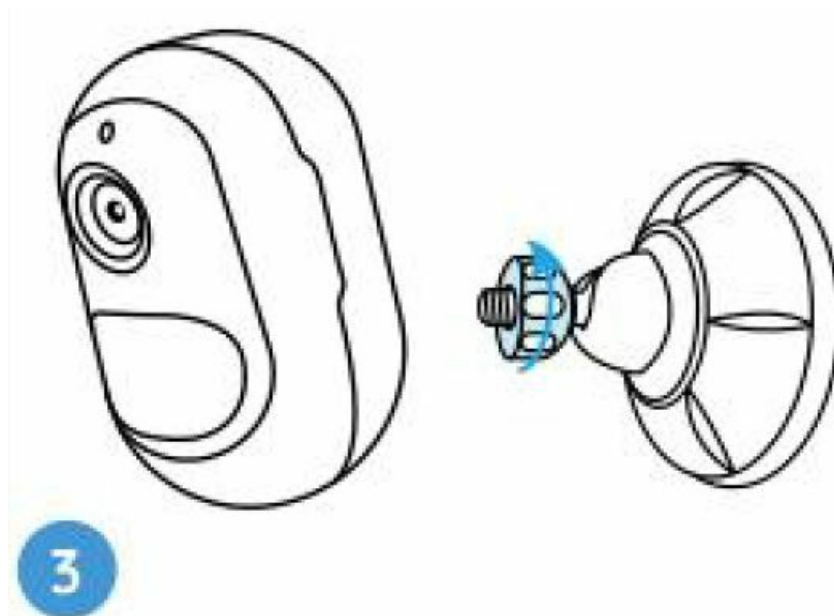


- **Step 1:** Rotate to separate the base from the security mount.



2

- **Step 2:** Drill holes with the mounting template and screw the base of the mount onto the wall. Then attach the other part of the mount to the base.

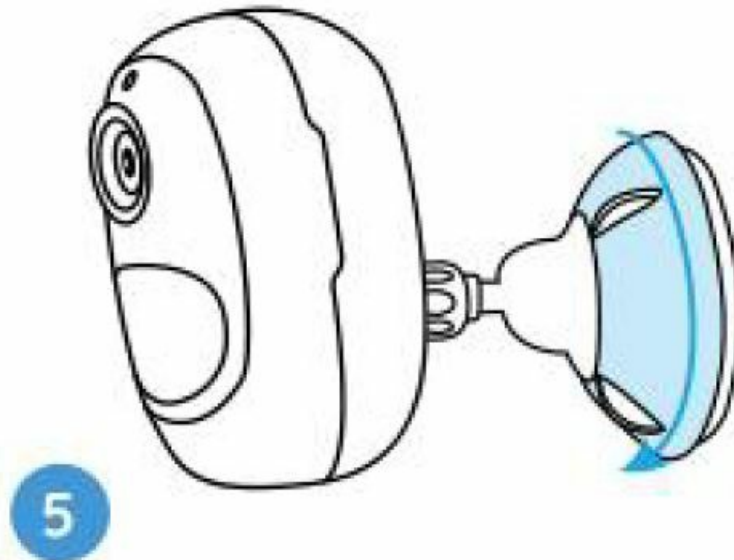


3

- **Step 3:** Screw the camera to the mount.



- **Step 4:** Adjust the camera's angle to get the best field of view.

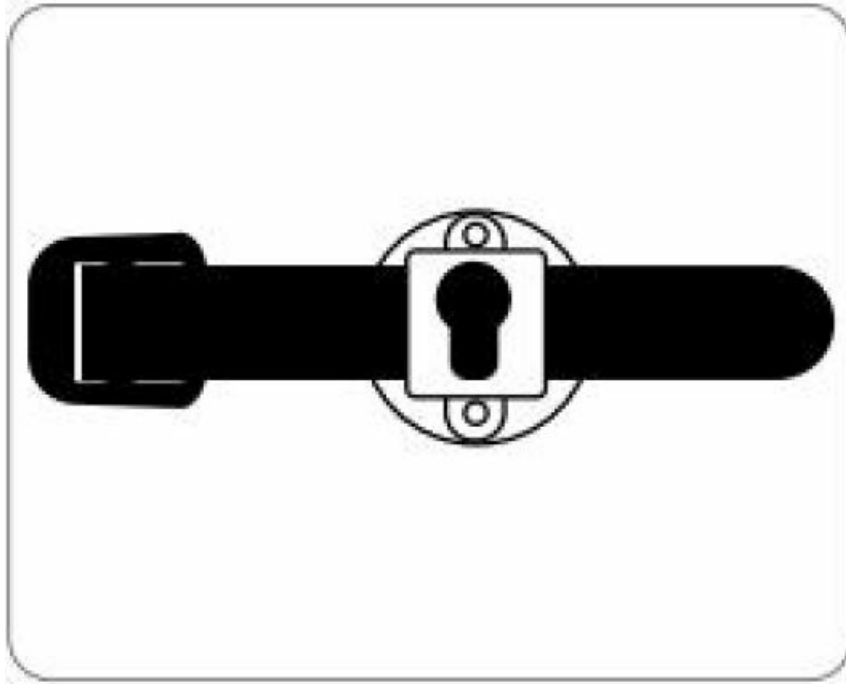


- **Step 5:** Secure the camera by turning the part on the mount identified in the chart clockwise.

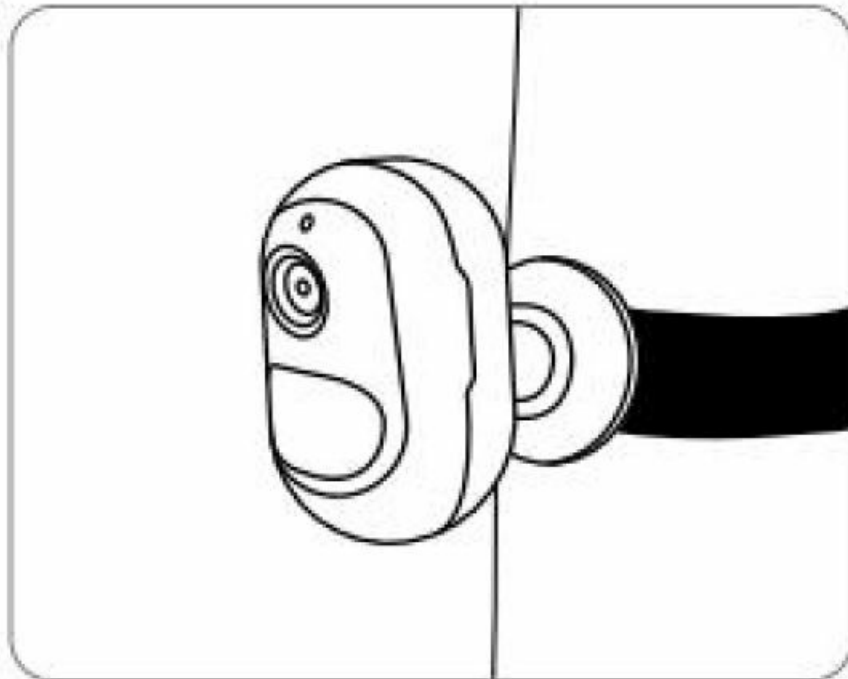
Note: To adjust the camera angle later, please loosen the mount by turning the upper part counterclockwise.

Install the Camera with Loop Strap

If you'd like to install the camera to a tree stem, follow up on the mounting method below.

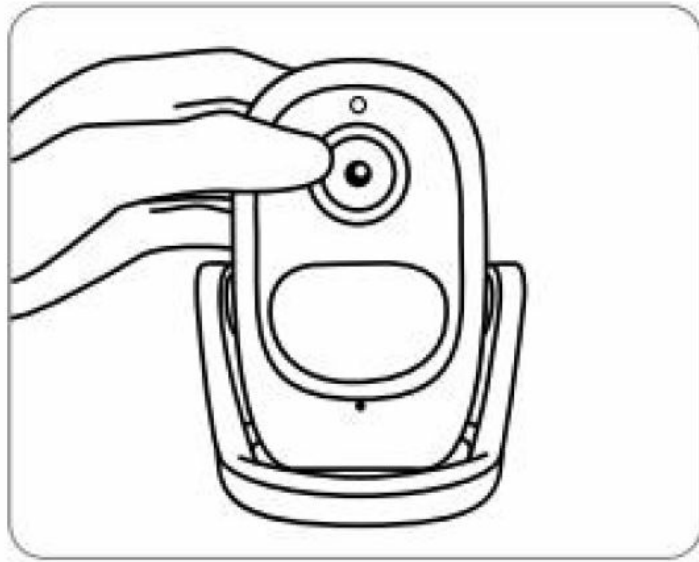


- **Step 1:** Thread the loop strap through the slot at the bottom of the security bracket.



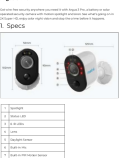
- **Step 2:** Fasten the strap around the tree tightly.

Place the Camera on a Surface



- If you plan to place the camera on a level surface indoors, for example, on the bookshelf, you could put the camera into the stand bracket and adjust the camera angle by slightly rotating the camera back and forth.

Documents / Resources

	<p>Reolink Argus 3 Pro Battery Powered Smart Camera [pdf] Instruction Manual</p> <p>Argus 3 Pro Battery Powered Smart Camera, Argus 3 Pro, Battery Powered Smart Camera, Powered Smart Camera, Smart Camera, Camera</p>
---	---

References

- [User Manual](#)