

reolink 2401C WiFi IP Camera



reolink 2401C WiFi IP Camera User Guide

[Home](#) » [reolink](#) » reolink 2401C WiFi IP Camera User Guide 

Contents

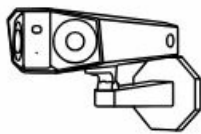
- 1 [reolink 2401C WiFi IP Camera](#)
- 2 [What's in the Box](#)
- 3 [Camera Introduction](#)
- 4 [Connection Diagram](#)
- 5 [Set up the Camera](#)
- 6 [Mount the Camera](#)
- 7 [Troubleshooting](#)
- 8 [Specification](#)
- 9 [Notification of Compliance](#)
- 10 [Documents / Resources](#)
 - 10.1 [References](#)
- 11 [Related Posts](#)



reolink 2401C WiFi IP Camera



What's in the Box



Camera



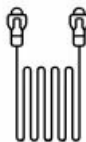
Antenna *



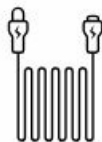
Waterproof Lid



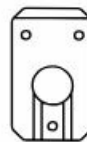
Power Adapter *



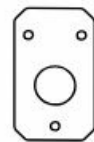
1M
Ethernet Cable



Power *
Extension Cable



Mounting Plate



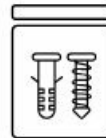
Mounting Hole
Template



Quick Start Guide



Surveillance Sign



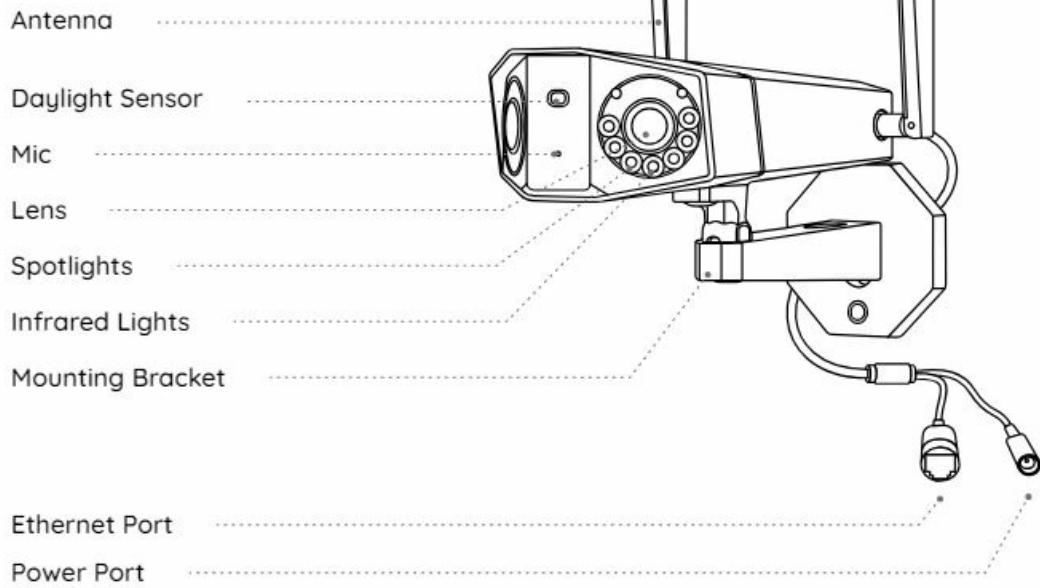
Pack of Screws

NOTE

- The power adapter, antennas, and 4.5m Power Extension Cable only come with a WiFi Camera.
- The quantity of accessories varies with the camera model you purchase.

Camera Introduction

WiFi Camera

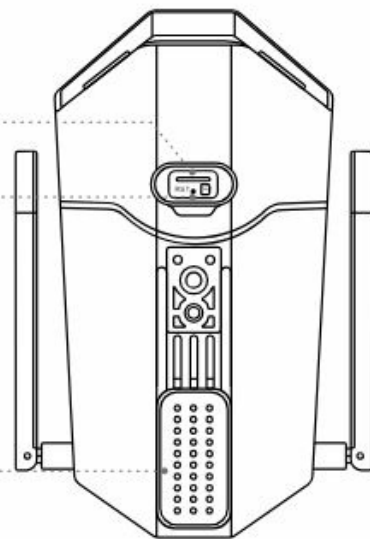


Micro SD Card Slot

Reset Button

*Press the reset button with a pin to restore factory settings.

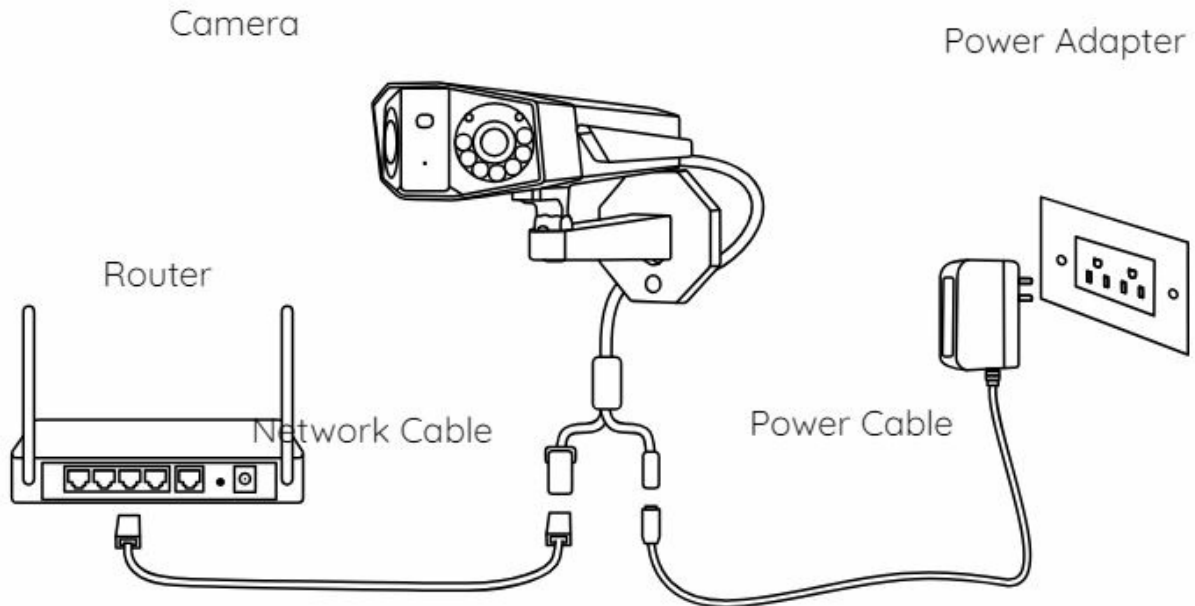
Speaker



Connection Diagram

Before initial setup, follow the steps below to connect your camera.

1. Connect the camera to a LAN port on your router with an Ethernet cable.
2. Use the power adapter to power the camera.



Set up the Camera

Download and Launch the Reolink App or Client software, and follow the onscreen instructions to finish the initial setup.



On Smartphone

Scan to download the Reolink App.

On PC

Download the path of the Reolink Client: Go to <https://reolink.com> > Support > App & Client.

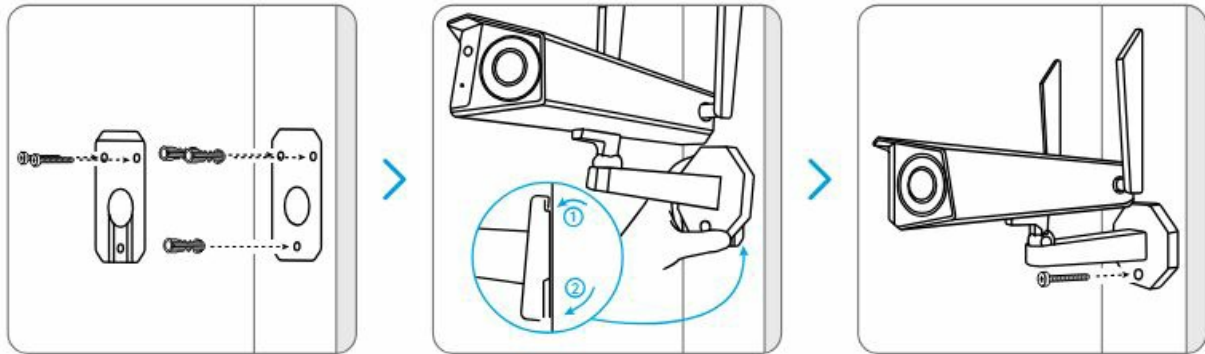
Mount the Camera

Installation Tips

- Do not face the camera towards any light sources.
- Do not point the camera to the arid glass window. Or, it may result in poor image quality because of the window glare by infrared LEDs, ambient lights, or status lights.
- Do not place the camera in a shaded area and point it towards a well-lit area. Or, it may result in poor image quality. To ensure the best image quality, the lighting conditions for both the camera and the captured object shall be the same.
- To ensure better image quality, it's recommended to clean the lens with a soft cloth from time to time.

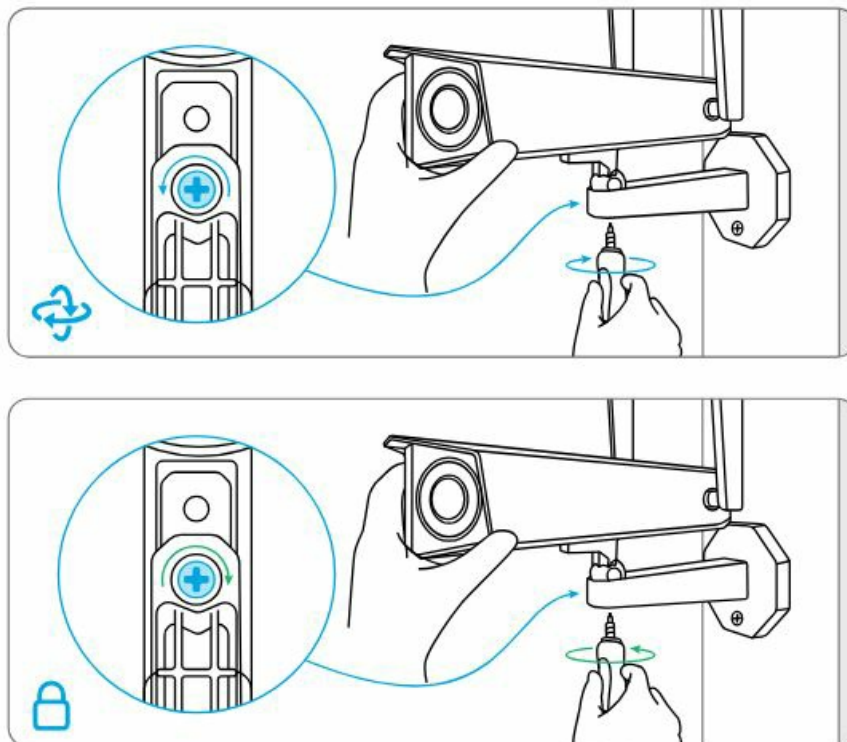
- Make sure the power ports are not directly exposed to water or moisture and not blocked by dirt or other elements.
- With IP waterproof ratings, the camera can work properly under conditions like rain and snow. However, it doesn't mean the camera can work underwater.
- Do not install the camera at places where rain and snow can hit the lens directly.
- The camera may work in extreme cold conditions as low as -25°C. Because when it is powered on, the camera will produce heat. You may power on the camera indoors for a few minutes before installing it outdoors.
- Try to keep the left lens level with the right lens.

Mount the Camera to the Wall



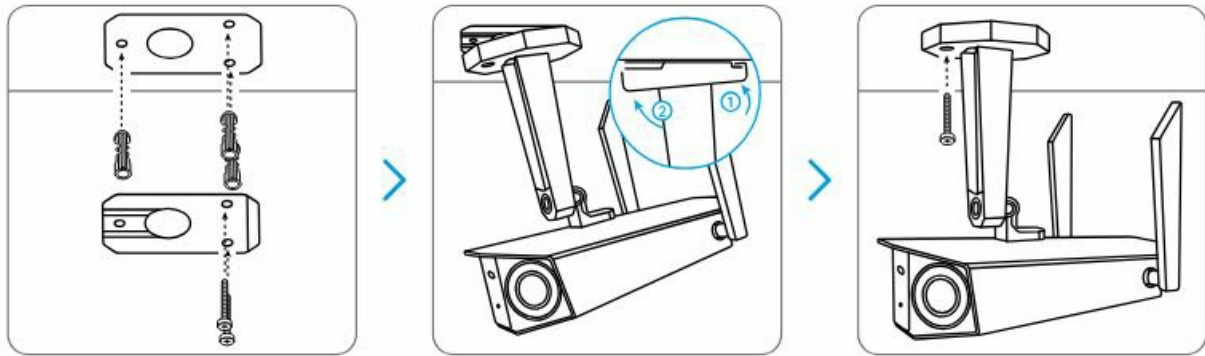
Drill holes with the mounting template, Secure the mounting plate to the wall with the upper two screws, and hang the camera on it. Then lock the camera in position with the lower screw.

NOTE: Use the drywall anchors included in the package if needed.



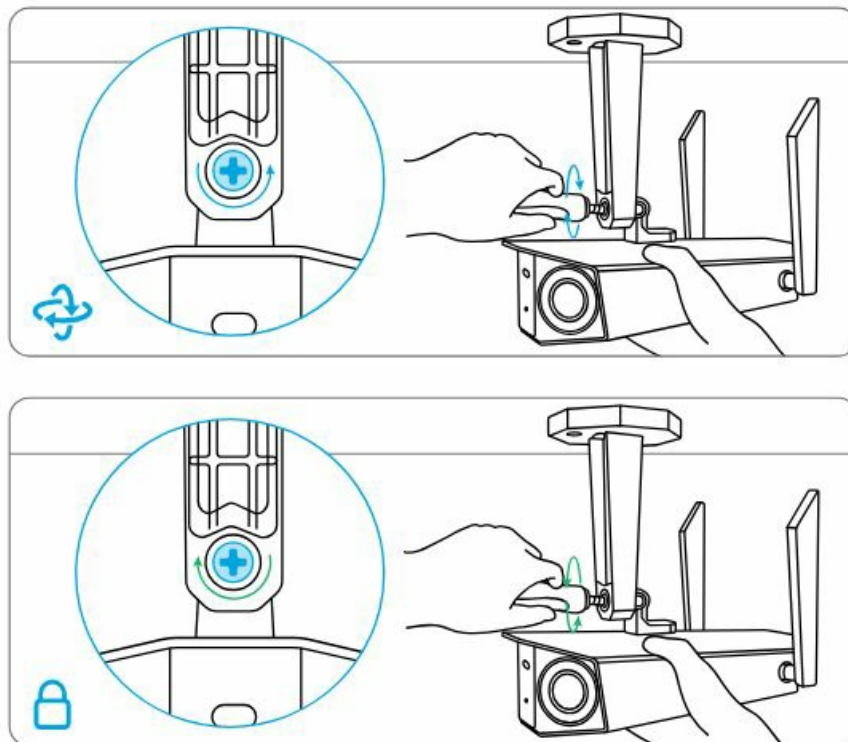
- To get the best field of view, loosen the adjustment screw on the security mount and turn the camera.
- Stiffen the adjustment screw to lock the camera

Mount the Camera to Ceiling



Drill holes with the mounting template, Secure the mounting plate to the wall with the upper two screws, and hang the camera on it. Then lock the camera in position with the lower screw.

- To get the best field of view, loosen the adjustment screw on the security mount and turn the camera.
- Stiffen the adjustment screw to lock the camera.



Troubleshooting

The camera is not Powering on

If your camera is not powering on, please try the following solutions:

- Plug the camera into a different outlet and see if it works.
- Power on the camera with another working 12V 2A DC adapter and see if it works.

If these won't work, contact Reolink Support.

The picture is not clear

If the picture from the camera is not clear, please try the following solutions:

- Check the camera lens for dirt, dust, or spiderwebs, please clean the lens with a soft, clean cloth.
- Point the camera to a well-lit area, the lighting condition will affect the picture quality a lot.
- Upgrade the firmware of your camera to the latest version.
- Restore the camera to factory settings and check it out again.

Specification

Hardware Features

- **Infrared Night Vision:** Up to 30 meters
- **Day/Night Mode:** Auto switchover
- **Angle of View:** Horizontal: 180°, vertical: 60°

General

- **Dimension:** 195 x 103 x 56mm
- **Weight:** 700g
- **Operating Temperature:** -10°C~+55°C (14°F~131°F)
- **Operating Humidity:** 10% ~ 90%
- For more specifications, visit <https://reolink.com/>.

Notification of Compliance

FCC Compliance Statements

This device complies with Part 15 of the FCC Rules. Operation is subject to the following two conditions: (1) this device may not cause harmful interference, and (2) this device must accept any interference received, including interference that may cause undesired operation.

Note: This equipment has been tested and found to comply with the limits for a Class B digital device, pursuant to Part 15 of the FCC Rules. These limits are designed to provide reasonable protection against harmful interference in a residential installation. This equipment generates, uses, and can radiate radio frequency energy and, if not installed and used under the instructions, may cause harmful interference to radio communications. However, there is no guarantee that interference will not occur in a particular installation. If this equipment does cause harmful interference to radio or television reception, which can be determined by turning the equipment off and on, the user is encouraged to try to correct the interference by one or more of the following measures:


- Reorient or relocate the receiving antenna.
- Increase the separation between the equipment and the receiver.
- Connect the equipment to an outlet on a circuit different from that to which the receiver is connected.
- Consult the dealer or an experienced radio/TV technician for help.

Caution: Changes or modifications not expressly approved by the party responsible for compliance could void the user's authority to operate the equipment.

FCC Radiation Exposure Statement

This equipment complies with FCC radiation exposure limits for an uncontrolled environment. This equipment should be installed and operated with a minimum distance of 20cm between the radiator and your body.

Documents / Resources

	reolink 2401C WiFi IP Camera [pdf] User Guide 2401C, 2401C WiFi IP Camera, WiFi IP Camera, IP Camera, Camera
---	---

References

- [📺 Reolink Official: Security Cameras and Systems for Home & Business](#)
- [User Manual](#)

[Manuals+](#), [Privacy Policy](#)

This website is an independent publication and is neither affiliated with nor endorsed by any of the trademark owners. The "Bluetooth®" word mark and logos are registered trademarks owned by Bluetooth SIG, Inc. The "Wi-Fi®" word mark and logos are registered trademarks owned by the Wi-Fi Alliance. Any use of these marks on this website does not imply any affiliation with or endorsement.