

FLD0808N-V2

QUICK START GUIDE

Contents [[hide](#)]

[1 FLD0808N-V2 Digital Expansion Model](#)

[2 PRODUCT DIMENSIONS](#)

[3 SPECIFICATIONS](#)

[4 PANEL MOUNTING](#)

[5 WIRING DIAGRAM](#)

[6 GETTING STARTED](#)

[7 Product Description](#)

[8 REVISION HISTORY](#)

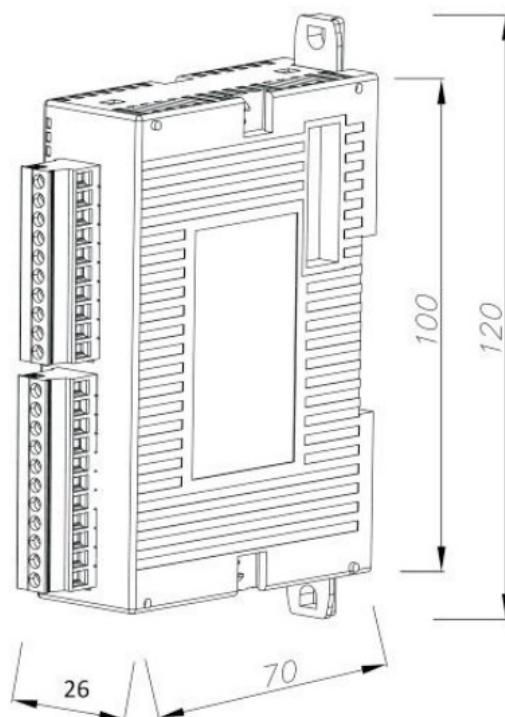
[9 Documents / Resources](#)

[9.1 References](#)

FLD0808N-V2 Digital Expansion Model

FLD0808N-V2 is Digital Expansion model, which workwith FL series base PLCs. This device acts as a slavedevice, which give information about the inputs tobase PLC model. This module is having 8 Digital Input(Bi Directional) and 8 Digital Output (NPN Type).

PRODUCT DIMENSIONS



SPECIFICATIONS

Power Supply	24VDC ($\pm 20\%$) @ 80mA
Power Consumption	1.92W
LED	Power LED (Green) , 8 Input and 8 Output LED (Red)
Local IO Specifications	
Digital Inputs	8 Digital Input (Bi Directional)
Input per channel	5mA @24VDC
Input Impedance	Minimum 4.8K Ω
Min. ON voltage	15VDC
Max. ON voltage	28VDC
Min. OFF voltage	– 3VDC
Max. OFF voltage	3VDC
Isolation	Optically isolated from the internal circuit. High isolation voltage greater than 1.5 kV.
Digital Outputs	8 NPN type Transistor O/P
Output per channel	250mA @24VDC
Output Capacity	250mA max.
Nominal load	96 Ω /6W (resistive) @ 24VDC per channel
Mechanical Dim.	100(H)mm X 26(W)mm X 70(D)mm
Environment & Approvals	
Operating Temperature	0 to 55°C
Storage Temperature	-30 to 85°C

Humidity	10 to 95% (Noncondensing)
Vibration	5 to 150Hz, displacement of 0.3mm (peak to peak), 3 G, 3 mutually perpendicular axes
Approvals	CE, UL ,RoHS , REACH and UKCA

PANEL MOUNTING

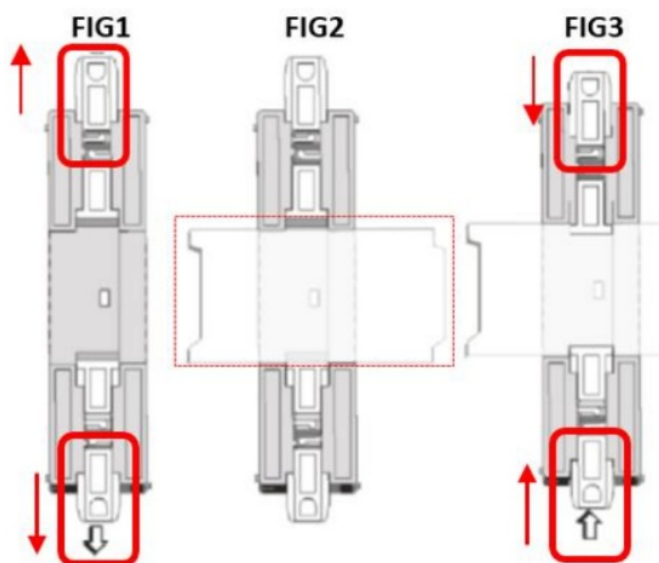


FIG-1: Pull up the sliders (highlighted by red color) provided with the unit towards outward direction.

FIG-2: Rest the unit on the DIN rail plate.

FIG-3: Pull down the slider (highlighted by red color) again so that unit can fix up with the DIN rail plate.

Steps to lock the Expansion module with Base module

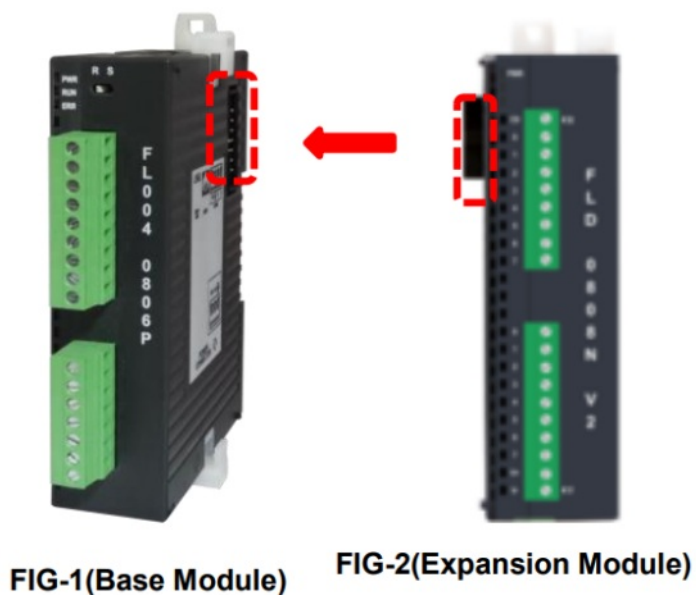


FIG-1(Base Module)

FIG-2(Expansion Module)

The Expansion model fits into the Base model via expansion connector (highlighted by dotted square).

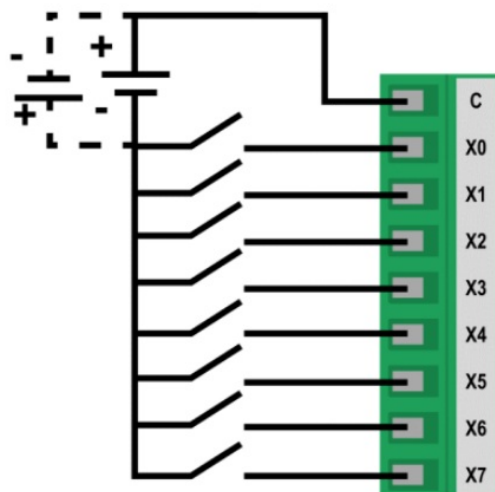


FIG-3

FIG-3: Press the highlighted connector (by red color) into the downward direction to lock it same connector from the downside of the product press upward direction. Locking connector helps the two units (FL base & expansion) to hold each other properly on the DIN rail plate.

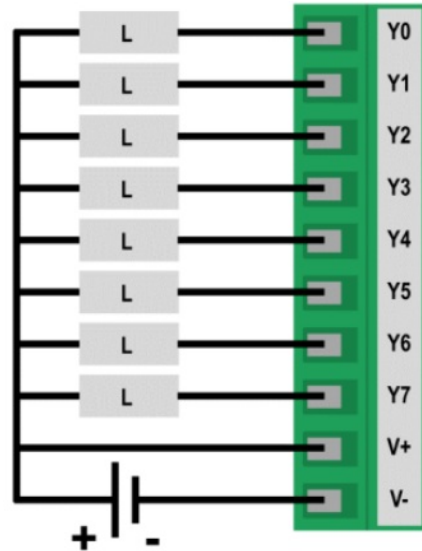
WIRING DIAGRAM

1. Wiring diagram for connecting digital inputs:



Closing Swx will turn on respective Inputs

2. Wiring diagram for connecting digital outputs:

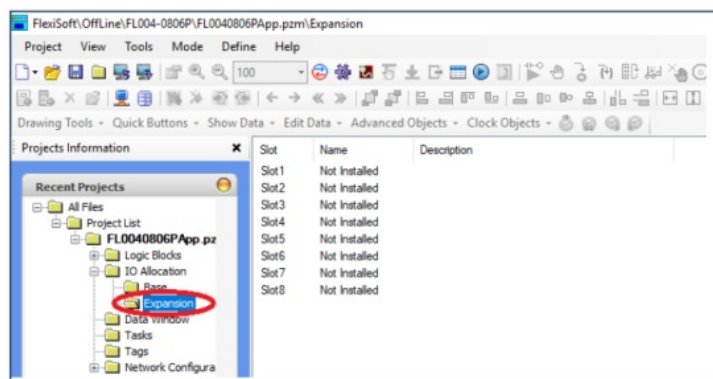


GETTING STARTED

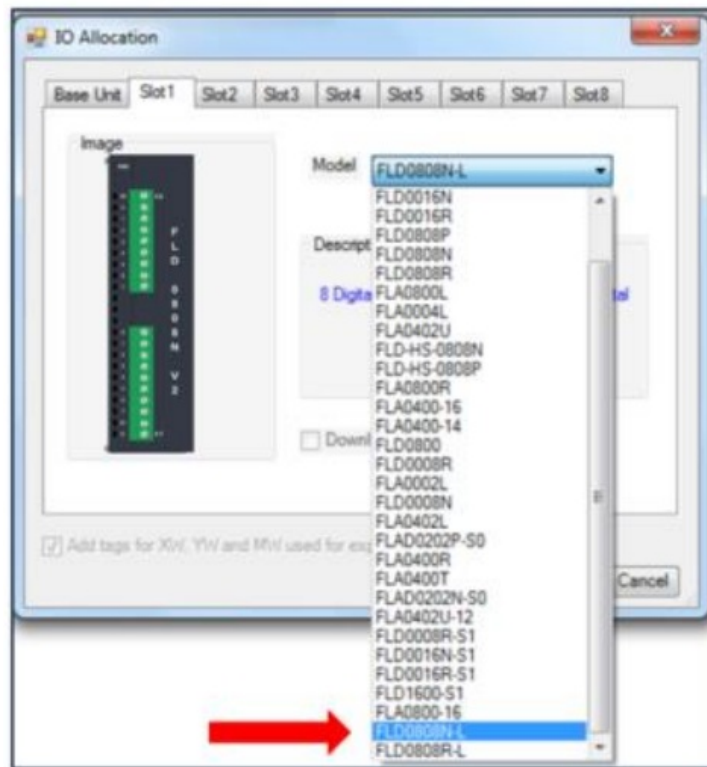
To configure expansion with the base model, please follow the below steps:

1. Run “FlexiSoft®” exe.
2. Create “New” project, select product (Base PLC Model) followed by model.
3. Fill the remaining basic information regarding the model and click on the “OK” button.

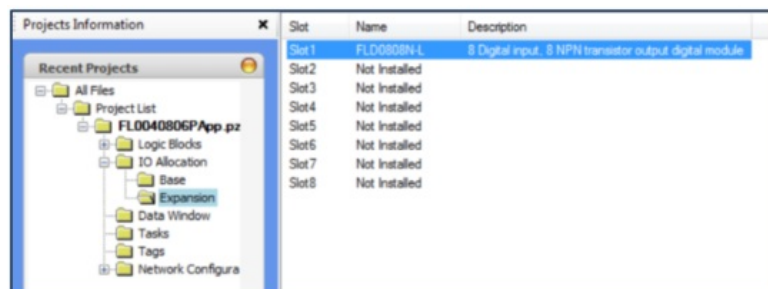
In user interface of FlexiSoft® software as shown below, in the area “IO Allocation”, you can add any expansion model to any slot. Expand IO Allocation, if you click on “Base” section, this will show you the name of the base model selected along with the address range. Once, you click on “Expansion” following screen will appear:



Here, you can declare expansion model to each slot:

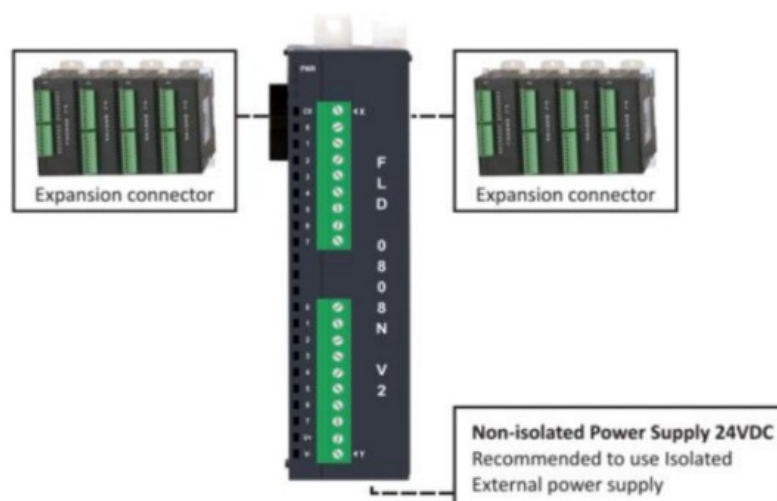


[Note: In the Flexisoft software, please choose the model name “FLD0808N-L/V2” from the Model list for FLD0808N-V2 model.] Now, the Expansion module is added into the slots as per selection.



Now build a ladder application, using these tags and download the application in base model.

Product Description



REVISION HISTORY

Rev.	Description	Date
1.1	Specification updated	9/6/2025
1.0	First Draft	13/04/2023

RENU Electronics Pvt. Ltd® reserves the right to change or discontinue specifications and features without prior notice.

To view the latest and updated datasheets/manuals please visit


www.renuelectronics.com.



For More Information, visit

<https://www.renuelectronics.com>

Documents / Resources

	Renuelectronics FLD0808N-V2 Digital Expansion Model [pdf] User Guide FLD0808N-V2 Digital Expansion Model, FLD0808N-V2, Digital Expansion Model, Expansion Model, Model
---	--

References

- [User Manual](#)

Renuelectronics

Digital Expansion Model, Expansion Model, FLD0808N-V2, FLD0808N-V2 Digital Expansion Model, Model, Renuelectronics

Leave a comment

Your email address will not be published. Required fields are marked *

Comment *

Name

Email

Website

☐ Save my name, email, and website in this browser for the next time I comment.

Post Comment

Search:

e.g. whirlpool wrf535swhz

Search

[Manuals+](#) | [Upload](#) | [Deep Search](#) | [Privacy Policy](#) | [@manuals.plus](#) | [YouTube](#)

This website is an independent publication and is neither affiliated with nor endorsed by any of the trademark owners. The "Bluetooth®" word mark and logos are registered trademarks owned by Bluetooth SIG, Inc. The "Wi-Fi®" word mark and logos are registered trademarks owned by the Wi-Fi Alliance. Any use of these marks on this website does not imply any affiliation with or endorsement.