



# renogy SNZB-04 Wireless Door & Window Sensor User Manual

[Home](#) » [Renogy](#) » renogy SNZB-04 Wireless Door & Window Sensor User Manual 



## User Manual

The Door & Window Sensor works intelligently with Renogy ONE to communicate with other devices.



The other devices should support Zigbee 3.0 protocol. Detailed information is in accordance with the final product.

## Contents

- 1 Operation Instruction
- 2 Specifications
- 3 Product Introduction
- 4 Features
- 5 Connect multiple devices concurrently to Renogy ONE
- 6 Delete Sensor from Renogy ONE
- 7 Installation Methods
- 8 Application
- 9 FCC Warning
- 10 Disclaimer
- 11 Documents / Resources
  - 11.1 References
- 12 Related Posts

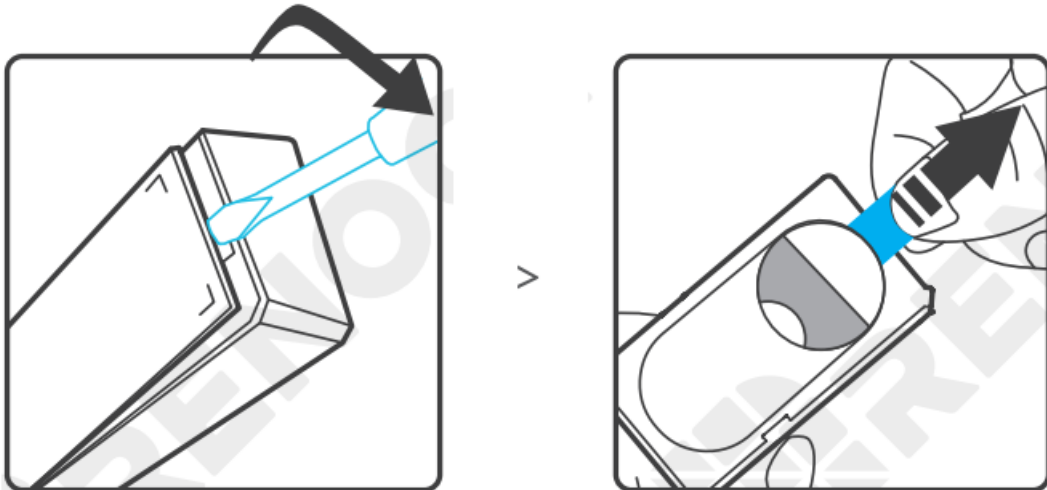
## Operation Instruction

1. Download DC Home app.



<https://activity.renogy-dchome.com/#/?id=75&type=3&param=Door/WindowSensor>

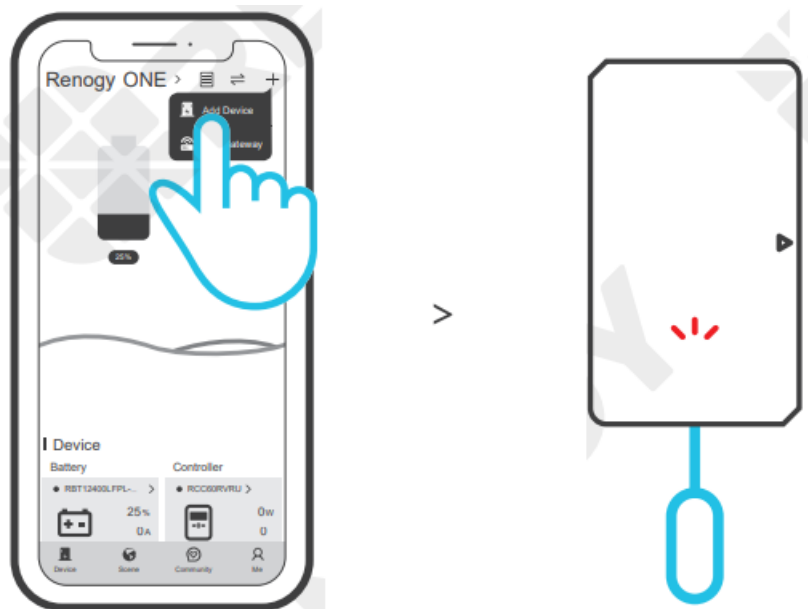
2. Pull out the battery insulation sheet from the Door & Window Sensor.



3. Add Door & Window Sensor to Renogy ONE.



Prior to adding Door & Window Sensor to Renogy ONE, make sure that Renogy ONE has been bound to DC Home app. For details, see the User Manual of Renogy ONE.



On DC Home app, tap “+ > Add Device” in the upper right corner of the interface. Long press the reset button on Door & Window Sensor for 5s until the LED indicator flashes three times. This means the Door & Window Sensor has entered the pairing mode. Wait until the pairing completes.

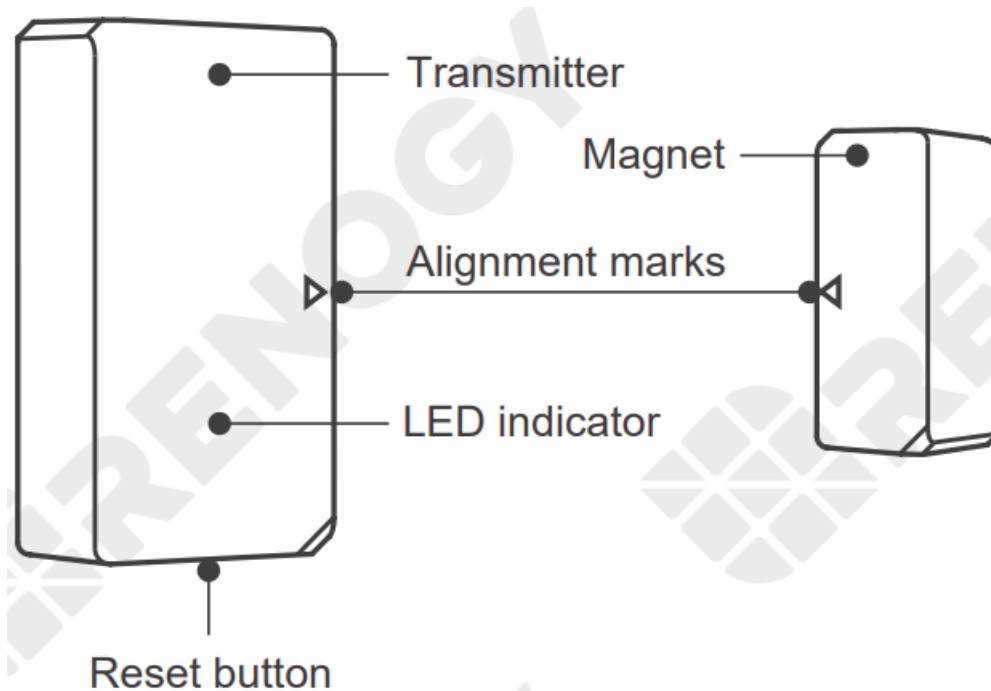


If adding Door & Window Sensors to Renogy ONE fails, move the sensor closer to Renogy ONE and redo the adding.

## Specifications

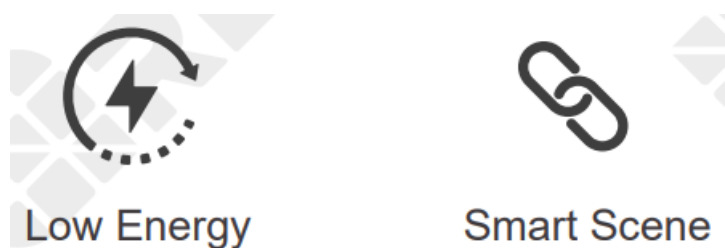
Model	SNZB-04
Battery model	CR2032 (3V)
Wireless connection	Zigbee (IEEE 802.15.4)
Quiescent current	< 2 $\mu$ A
Emission current	< 15 mA
Installation gap	< 10 mm (0.39 in)
Operating temperature	-10°C-40°C (14°F-104°F)
Working humidity	10-90%RH (non-condensing)
Material	PC
Dimensions	Transmitter: 47 x 27 x 13.5 mm (1.85 x 1.06 x 0.53 in) 32 x 15.6 x 13 mm Magnet (1.26 x 0.61 x 0.51 in)

## Product Introduction

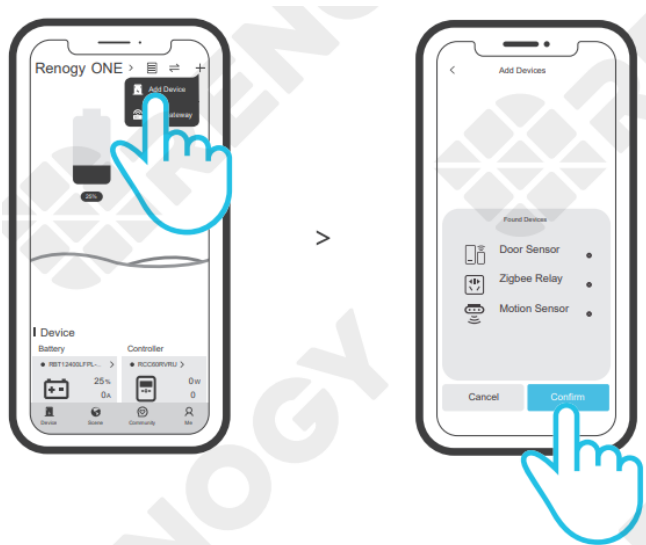


## Features

SNZB-04 is a Zigbee low-energy wireless Door & Window Sensor that informs you of the opening/closing status of the door and window in real-time by separating the magnet from the transmitter. By connecting it with Renogy ONE, you can create a smart scene to control other devices.



## Connect multiple devices concurrently to Renogy ONE



Power on Renogy ONE set the sensor to pairing mode. Choose Renogy ONE on DC Home app, and tap "+ > Add Device". Tap the sensor name to add it to Renogy ONE.

## Delete Sensor from Renogy ONE

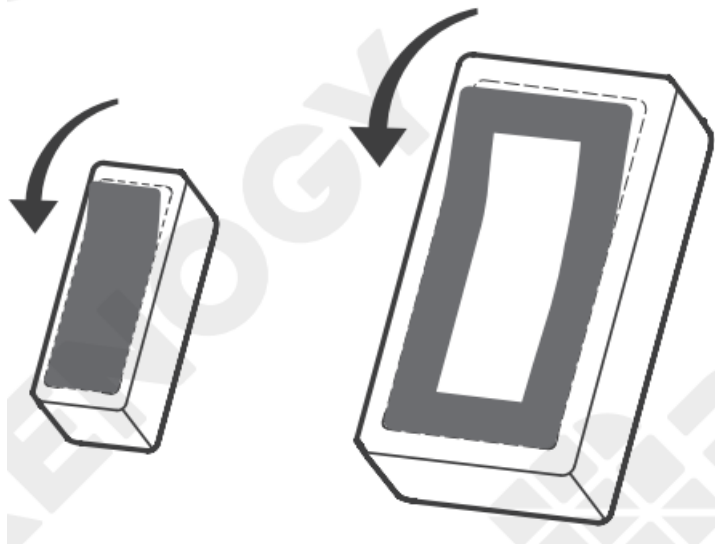
To disconnect the sensor from Renogy ONE, long press the reset button on the sensor for 5s until the LED indicator flashes three times successfully.



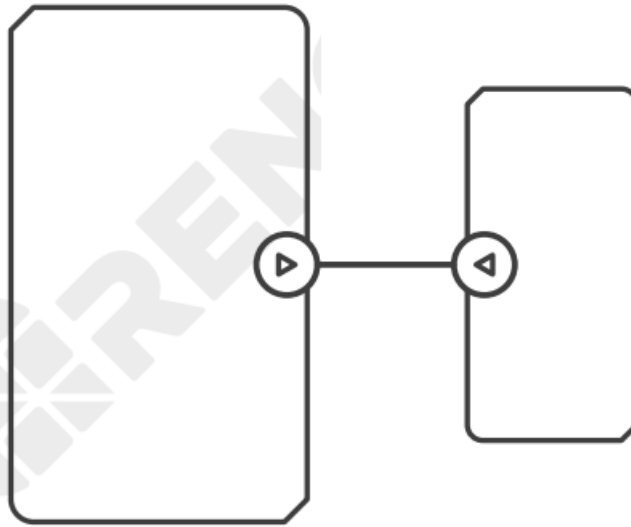
Alternatively, you can long-press the sensor on DC Home app to delete it from Renogy ONE.

## Installation Methods

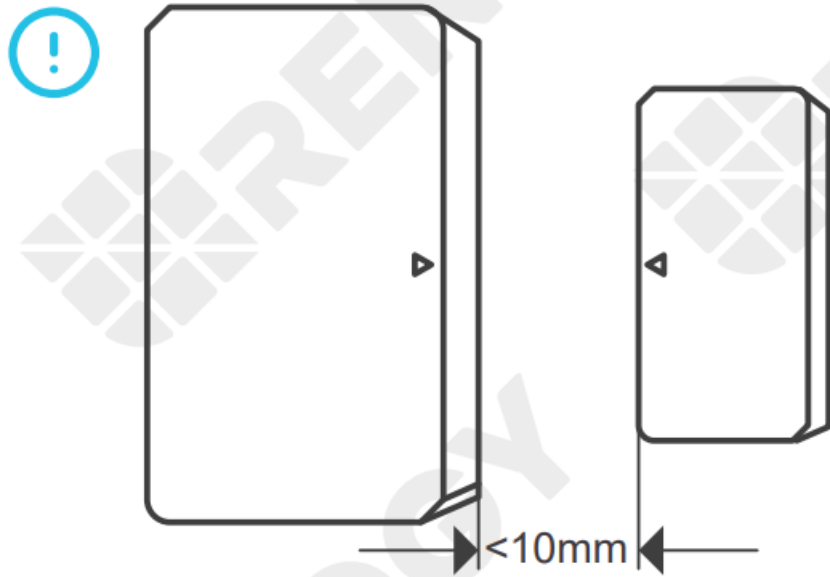
1. Tear off the protective film of the 3M adhesive from both the transmitter and magnet.



2. Align the mark on the magnet with that on the transmitter horizontally.

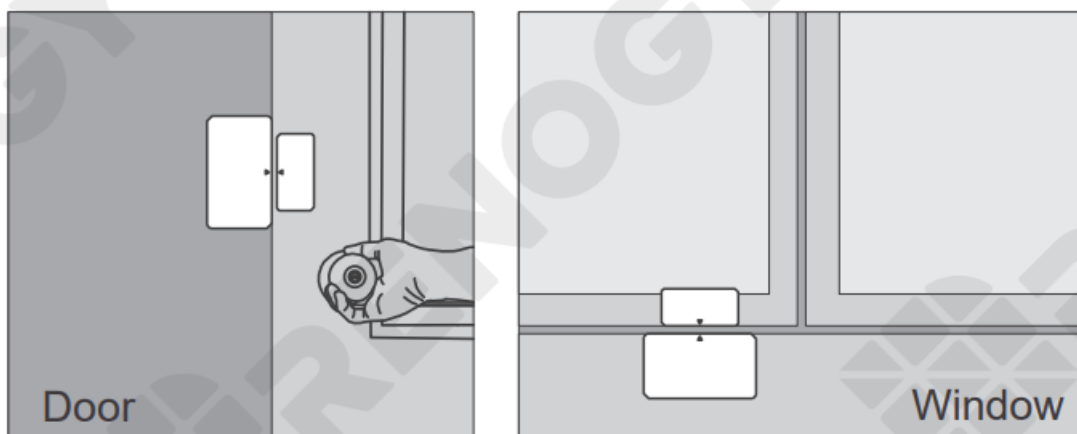


3. Install the transmitter and magnet in the opening and closing sides of the door or window separately.



Make sure the gap between the magnet and the transmitter is less than 10 mm when the door or the window is closed.

### Application



**i** NOTE

- Do NOT install the Door & Window Sensor outside the door/window.
- Do NOT install the Door & Window Sensor in an unstable position or in a place exposed to rain or moisture.
- Do NOT install the Door & Window Sensor near wiring or magnetic objects.

## **FCC Warning**

Changes or modifications not expressly approved by the party responsible for compliance could avoid the user's authority to operate the equipment.

This device complies with part 15 of the FCC Rules.

Operation is subject to the following two conditions:

- (1) This device may not cause a harmful interface;
- (2) This device must accept any interference received, including interference that may cause undesired operation.

## **FCC Radiation Exposure Statement:**

This equipment complies with FCC radiation exposure limits set forth for an uncontrolled environment. This equipment should be installed and operated with a minimum distance 20cm between the radiator & your body. This transmitter must not be co-located or operating in conjunction with any other antenna or transmitter.

## **Note:**

This equipment has been tested and found to comply with the limits for a Class B digital device, pursuant to part 15 of the FCC Rules. These limits are designed to provide reasonable protection against harmful interference in a residential installation. This equipment generates, uses, and can radiate radio frequency energy and, if not installed and used in accordance with the instructions, may cause harmful interference to radio communications. However, there is no guarantee that interference will not occur in a particular installation. If this equipment does cause harmful interference to radio or television reception, which can be determined by turning the equipment off and on, the user is encouraged to try to correct the interference by one or more of the following measures:

- Reorient or relocate the receiving antenna.
- Increase the separation between the equipment and receiver.
- Connect the equipment into an outlet on a circuit different from that to which the receiver is connected.
- Consult the dealer or an experienced radio/TV technician for help.

## **Disclaimer**

- Renogy makes no warranty as to the accuracy, sufficiency, or suitability of the information in the User Manual because continuous product improvements are going to be made.
- Renogy assumes no responsibility or liability for losses or damages, whether direct, indirect, consequential, or incidental, which might arise out of the use of information in the User Manual.
- Renogy is not responsible or liable for the failures, damages, or injuries resulting from repair attempted by unqualified personnel or improper installation and operation.
- The illustrations in the User Manual are for demonstration purposes only. Details may appear slightly different depending on product revision and market region.
- Renogy reserves the right to change the information in the User Manual without notice.
- All trademarks are property of their respective owners.

## **Manufacturer**

**Shenzhen Sonoff Technologies Co., Ltd.**

1001, BLDG8, Lianhua Industrial Park, Shenzhen,

GD, China  
ZIP code: 518000  
MADE IN CHINA



## **Renogy Empowered**




Renogy aims to empower people around the world through education and distribution of DIY-friendly renewable energy solutions.

We intend to be a driving force for sustainable living and energy independence.

In support of this effort, our range of solar products makes it possible for you to minimize your carbon footprint by reducing the need for grid power.

## **Live Sustainably with Renogy**

Did you know? In a given month, a 1KW solar energy system will...

	Save 170 pounds of coal from being burned
	Save 300 pounds of CO <sub>2</sub> from being released into the atmosphere
	Save 105 gallons of water from being consumed

## **Renogy Power PLUS**

Renogy Power Plus allows you to stay in the loop with upcoming solar energy innovations, share your experiences with your solar energy journey, and connect with like-minded people who are changing the world in the Renogy Power Plus community. Also, follow us on Social Media @RenogySolar.



Visit [renogy.com](https://www.renogy.com) to find relevant documentation or get more support via "Contact Us". Renogy reserves the right to change the contents of this manual without notice.

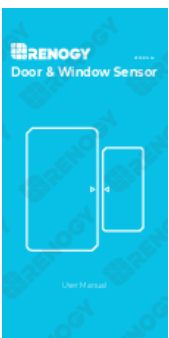
Join the Renogy Power Plus Community by downloading the DC Home App. Find your e-warranty here, and more.





<https://www.renogy-dchome.com/activity/#/?id=23&type=3>  
[RENOGY.COM](https://www.renogy.com)

## Documents / Resources

	<p><a href="#">renogy SNZB-04 Wirless Door &amp; Window Sensor</a> [pdf] User Manual SNZB-04, Sensor, Window Sensor, Door Window Sensor</p>
--	---

## References

- [Renogy® Official- offer all off grid solar system products](#)