

RENOGY RSHPGZ01P-US Zigbee Smart Plug User Manual

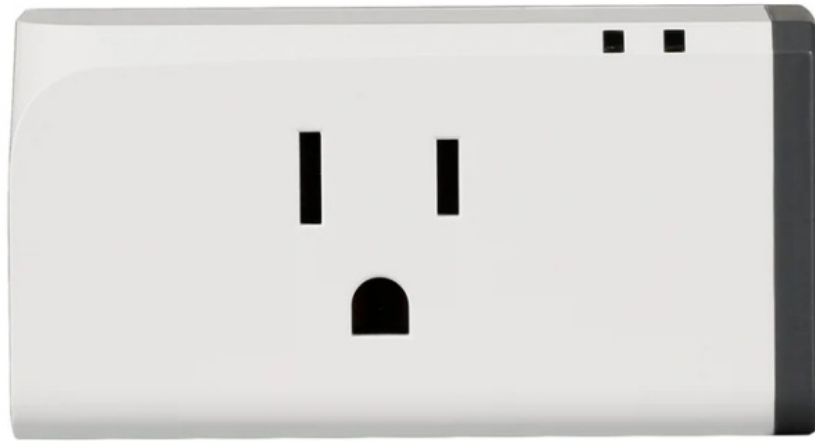
[Home](#) » [Renogy](#) » [RENOGY RSHPGZ01P-US Zigbee Smart Plug User Manual](#) 

Contents

- [1 RENOGY RSHPGZ01P-US Zigbee Smart Plug](#)
- [2 Operating Instruction](#)
- [3 Connect multiple devices concurrently to Renogy ONE](#)
- [4 Specifications](#)
- [5 Product Introduction](#)
- [6 Features](#)
- [7 Switch Network](#)
- [8 Factory Reset](#)
- [9 FCC Warning](#)
- [10 Disclaimer](#)
- [11 Renogy Empowered](#)
- [12 Live Sustainably with Renogy](#)
- [13 Renogy Power PLUS](#)
- [14 Documents / Resources](#)
 - [14.1 References](#)
- [15 Related Posts](#)



RENOGY RSHPGZ01P-US Zigbee Smart Plug



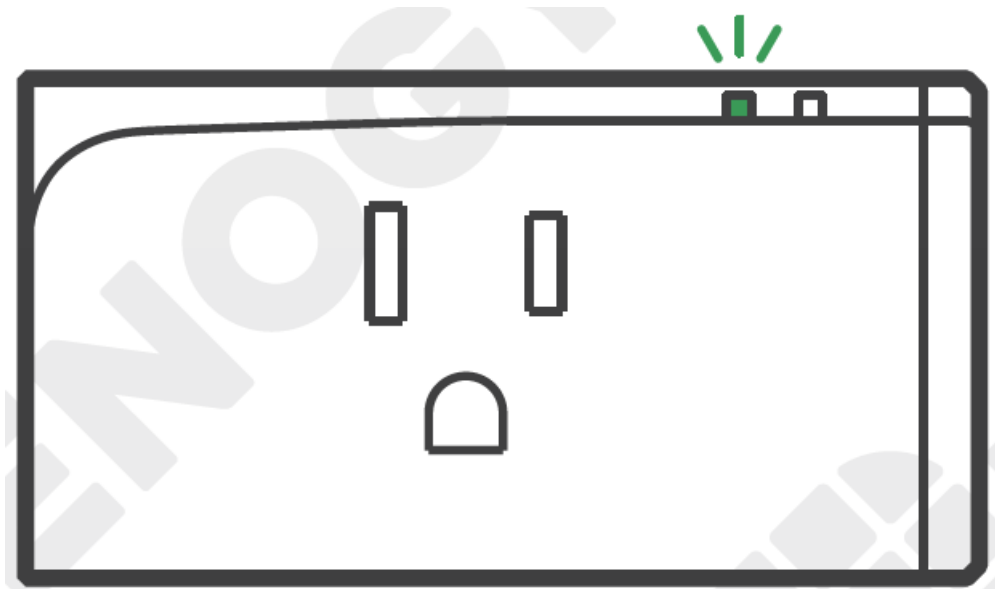
The Smart Plug (Zigbee) works intelligently with Renogy ONE to communicate with other devices. The Smart Plug (Zigbee) works intelligently with Renogy ONE to communicate with other devices.

Operating Instruction

Download DC Home app.



Power on.

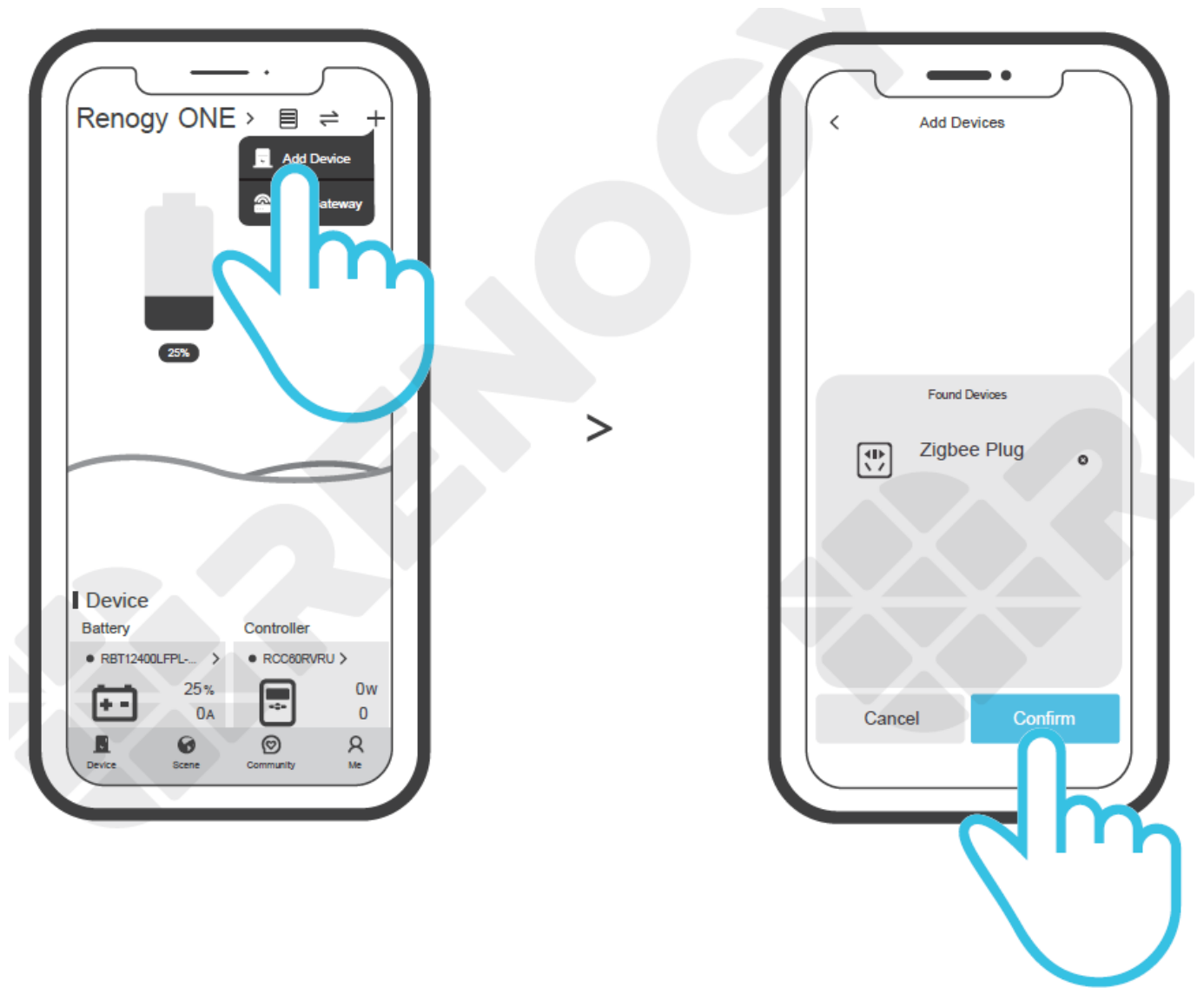


For initial use, Smart Plug (Zigbee) enters the pairing mode upon power on with the LED signal indicator flashing green.

NOTE Smart Plug (Zigbee) exits the pairing mode if there is no next operation for a long time. To re-enter the pairing mode, you can long press the manual switch for 5s until the LED signal indicator flashes three times.

Add Smart Plug (Zigbee) to Renogy ONE.

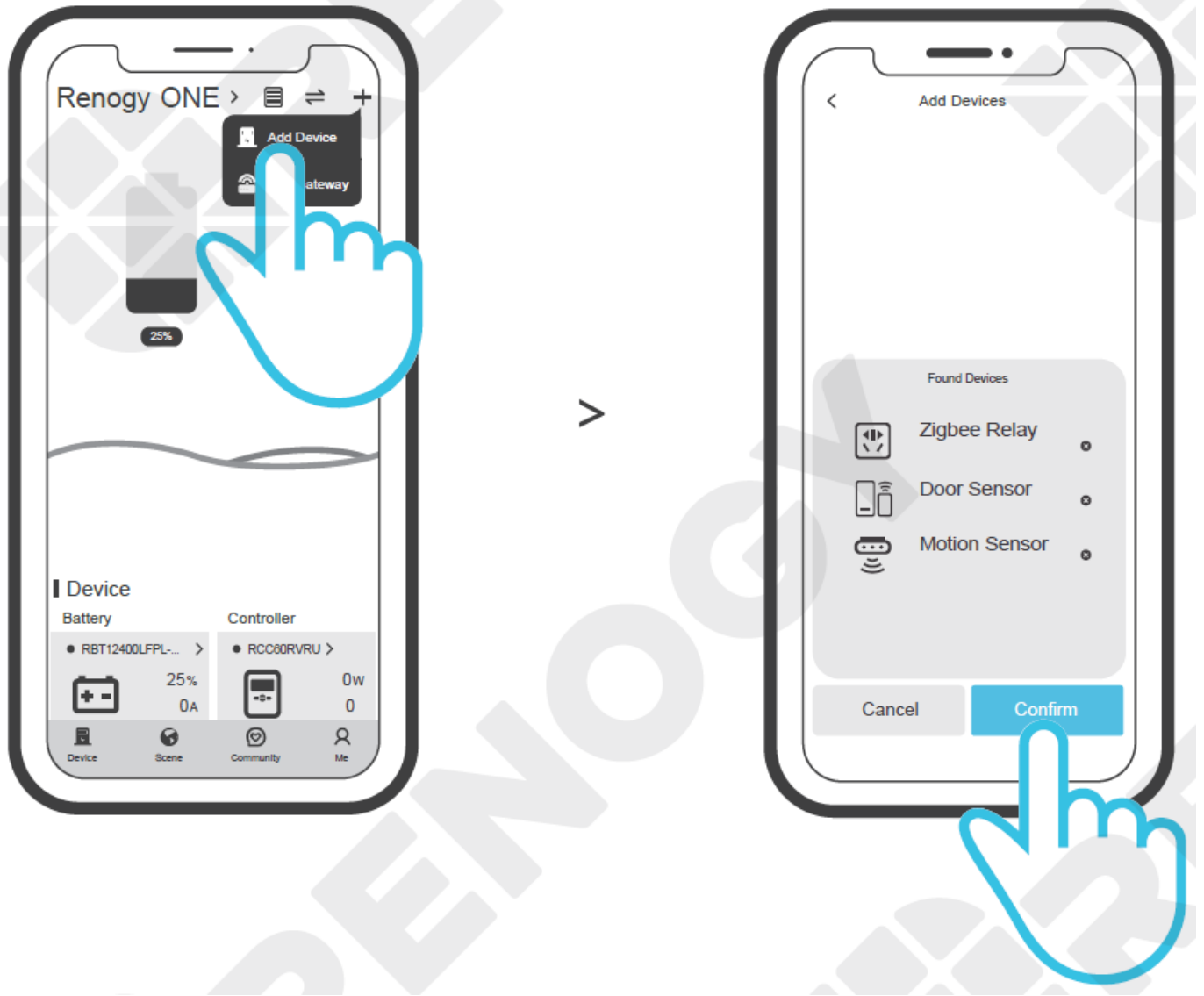
Prior to adding Smart Plug (Zigbee) to Renogy ONE, make sure that Renogy ONE has been bound to DC Home app. For details, see the User Manual of Renogy ONE.



On DC Home app, tap “+ > Add Device” in the upper right corner of the interface.

NOTE: If adding Smart Plug (Zigbee) to Renogy ONE fails, move the plug closer to Renogy ONE and redo the adding.

Connect multiple devices concurrently to Renogy ONE

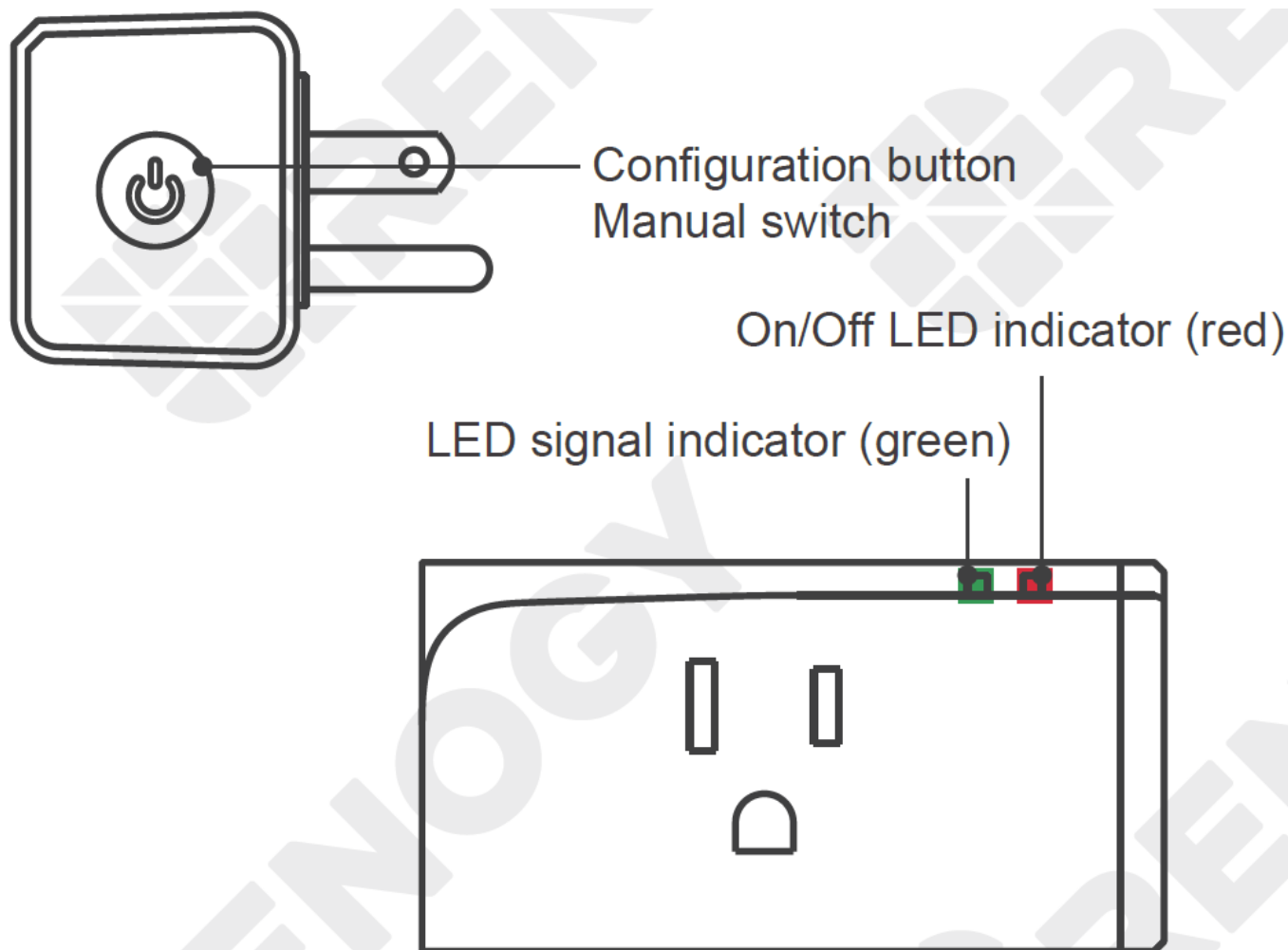


Power on Renogy ONE, set the sensor to pairing mode. Choose Renogy ONE on DC Home app, tap “+ > Add Device”. Tap the sensor name to add it to Renogy ONE.

Specifications

- **Model**
 - S31 Lite zb
- **Input**
 - 120V AC 60Hz
- **Output**
 - 120V AC 60Hz
- **Max. Load**
 - 15A / 1800W
- **ZigBee**
 - IEEE 802.15.4 2.4GHz
- **Material**
 - PC V0
- **Dimensions**
 - 76 x 40 x 33 mm (2.99 x 1.57 x 1.29 in)

Product Introduction



Features

Smart Plug (Zigbee) is a Zigbee 3.0 smart plug that accesses the Internet via Renogy ONE. You can remotely turn/schedule it on or off via your smartphone.



Remote Control



Timing Schedule



Smart Scene

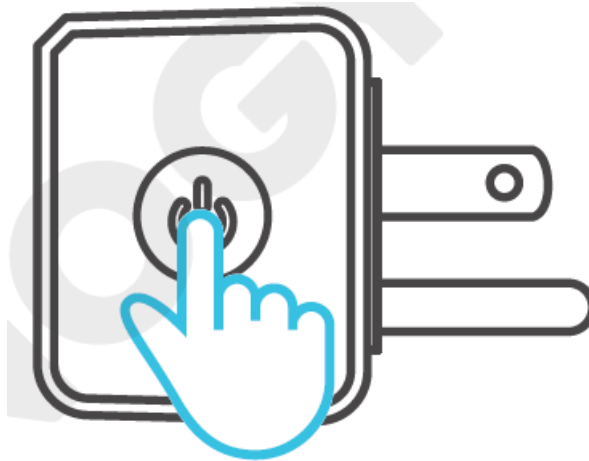


LAN Control

NOTE: Supported features are determined by the specific Renogy ONE in use.

Switch Network

If you need to change the network, long press the pairing button for 5s until the LED signal indicator changes in a cycle of two short and one long flash and release, then the device enters quick pairing mode and you can pair it to Renogy ONE again.



Factory Reset

Deleting Smart Plug (Zigbee) from DC Home app restores the plug to factory settings.

FCC Warning

Changes or modifications not expressly approved by the party responsible for compliance could avoid the user's authority to operate the equipment.

This device complies with part 15 of the FCC Rules. Operation is subject to the following two conditions:

1. This device may not cause harmful interface;
2. This device must accept any interference received, including interference that may cause undesired operation.

FCC Radiation Exposure Statement:

This equipment complies with FCC radiation exposure limits set forth for an uncontrolled environment. This equipment should be installed and operated with minimum distance 20cm between the radiator & your body. This transmitter must not be co-located or operating in conjunction with any other antenna or transmitter.

Note:

This equipment has been tested and found to comply with the limits for a Class B digital device, pursuant to part 15 of the FCC Rules. These limits are designed to provide reasonable protection against harmful interference in a residential installation. This equipment generates, uses and can radiate radio frequency energy and, if not installed and used in accordance with the instructions, may cause harmful interference to radio communications. However, there is no guarantee that interference will not occur in a particular installation. If this equipment does cause harmful interference to radio or television reception, which can be determined by turning the equipment off and on, the user is encouraged to try to correct the interference by one or more of the following measures:

- Reorient or relocate the receiving antenna.
- Increase the separation between the equipment and receiver.
- Connect the equipment into an outlet on a circuit different from that to which the receiver is connected.
- Consult the dealer or an experienced radio/TV technician for help.

Disclaimer

- Renogy makes no warranty as to the accuracy, sufficiency, or suitability of the information in the User Manual because continuous product improvements are going to be made. Renogy assumes no responsibility or liability for losses or damages, whether direct, indirect, consequential, or incidental, which might arise out of the use of information in the User Manual.
- Renogy is not responsible or liable for the failures, damages, or injuries resulting from repair attempted by unqualified personnel or improper installation and operation.
- The illustrations in the User Manual are for demonstration purposes only. Details may appear slightly different depending on product revision and market region. Renogy reserves the right to change the information in the User Manual without notice.
- All trademarks are property of their respective owners.

Manufacturer

Shenzhen Sonoff Technologies Co., Ltd.

1001, BLDG8, Lianhua Industrial Park, Shenzhen, GD, China

ZIP code: 518000

MADE IN CHINA

Renogy Empowered

Renogy aims to empower people around the world through education and distribution of DIY-friendly renewable energy solutions.

We intend to be a driving force for sustainable living and energy independence.

In support of this effort, our range of solar products makes it possible for you to minimize your carbon footprint by reducing the need for grid power.

Live Sustainably with Renogy

Did you know? In a given month, a 1KW solar energy system will...



Save 170 pounds of coal from being burned



Save 300 pounds of CO₂ from being released into the atmosphere



Save 105 gallons of water from being consumed

Renogy Power PLUS

Renogy Power Plus allows you to stay in the loop with upcoming solar energy innovations, share your experiences with your solar energy journey, and connect with like-minded people who are changing the world in the Renogy Power Plus community.

Also, follow us on Social Media @RenogySolar.

Visit [renogy.com](https://www.renogy.com) to find relevant documentation or get more support via "Contact Us". Renogy reserves the right to change the contents of this manual without notice.

Join the Renogy Power Plus Community by downloading the DC Home App. Find your e-warranty here, and more.



Documents / Resources

	<p>RENOGY RSHPGZ01P-US Zigbee Smart Plug [pdf] User Manual RSHPGZ01P-US, Zigbee Smart Plug, RSHPGZ01P-US Zigbee Smart Plug</p>
--	--

References

- [Renogy® Official- offer all off grid solar system products](#)