



RENISHAW SFM-B1 Surface Finish Probe Module Instructions

[Home](#) » [RENISHAW](#) » RENISHAW SFM-B1 Surface Finish Probe Module Instructions 

RENISHAW 

apply innovation™

**SFM-B1 Surface Finish Probe Module
Instructions**



Contents

- [1 SFM-B1 Surface finish probe module](#)
- [2 Features](#)
- [3 Typical applications](#)
- [4 Specification](#)
- [5 Documents / Resources](#)
 - [5.1 References](#)
- [6 Related Posts](#)

SFM-B1 Surface finish probe module

Enhanced access and inspection capability for integrated surface finish measurement

The SFP2 system consists of a probe and a range of SFM modules that have been designed to suit the demands of specific parts and features encountered in a precision manufacturing environment. The probe and modules can be automatically interchanged with all other REVO® probe options, providing the flexibility to easily select the optimum tool to inspect a wide range of features.

Each SFM module is its own miniature measuring device, incorporating Renishaw's proprietary encoder system to transduce the motion of the stylus tip.



Features

The B-series of modules features a small skid which allows the stylus to be placed close to the edge of surfaces of interest. The range of skid-arm designs provides access to awkward-to-reach features and parts with surface form and curvature.

Typical applications

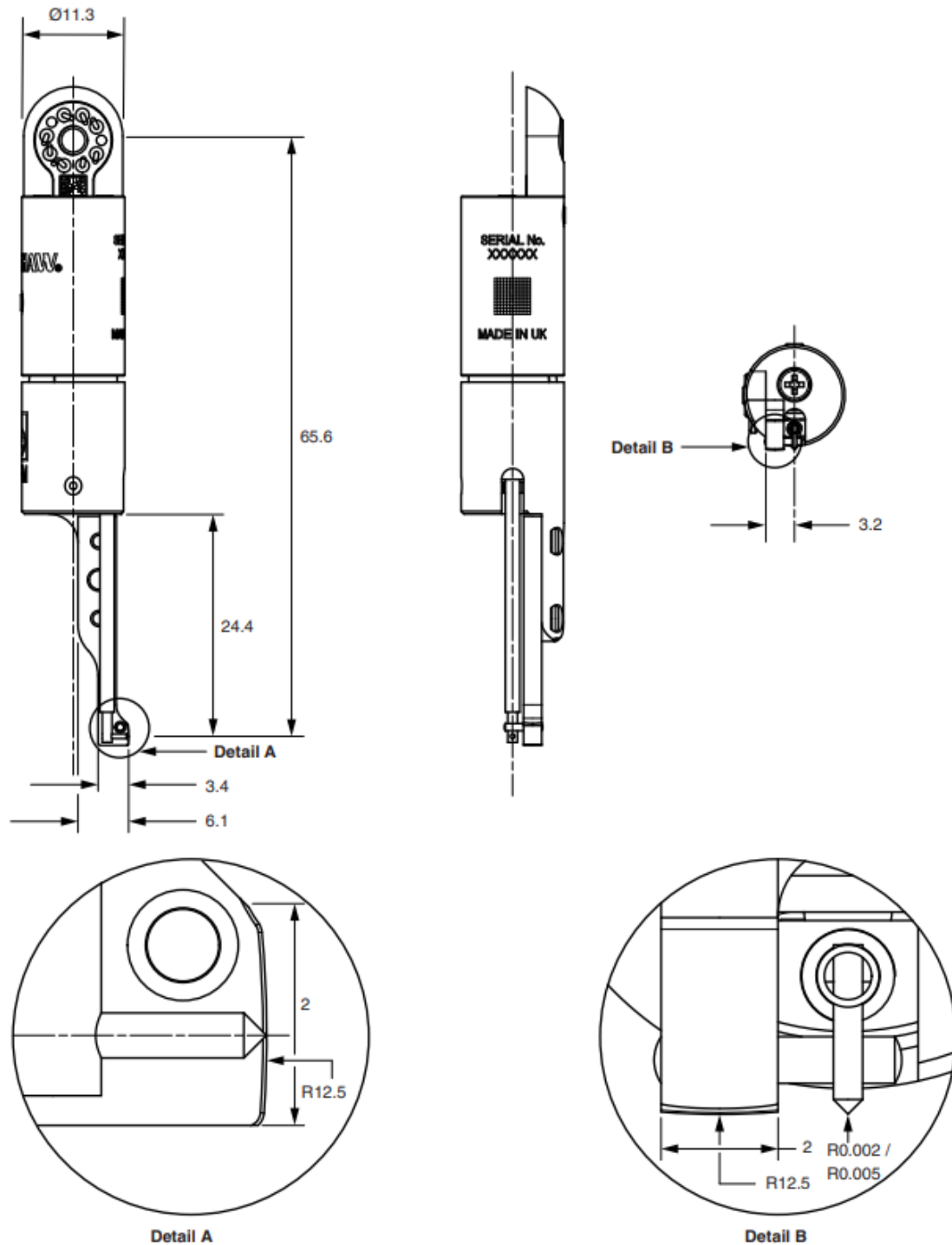
Scanning close to obstructive faces.

Specification

Diamond tip radius (pm)		2 or 5
Surface finish measurement range (pm)	2 pm modules	6.3 to 0.05 Ra
	5 pm modules	6.3 to 0.10 Ra
Typical surface finish accuracy (of nominal Ra)		-±(5% + 15 nm)
Skid / stylus arrangement		Side-by-side
Skid material		DLC coated stainless steel
Nominal stylus tip protrusion beyond skid (mm)		0.5
Skid length / radius (mm)		2 / 12.5
Skid width / radius (mm)		2 / 12.5
Skid contact force (N)		0.2
Stylus contact force (N)		0.003
SFM / SFH knuckle adjustment range		-AO°
Weight (g)		12
Resolution (nm)		1
Measurement speed (mm/s)		Up to 1
Stylus holder compatibility		SFH-1, SFH-2
Lateral scanning capability		Yes

* Accuracy values are dependent upon a number of system variables. These include the machine size and configuration, scan orientation, condition of the stylus tip, part fixturing system, and environmental noise.

All dimensions in mm.



www.renishaw.com/SFP2

#renishaw



+44 (0) 1453 524524



uk@renishaw.com

© 20192021 Renishaw plc. All rights reserved. RENISHAW® and the probe symbol are registered trademarks of Renishaw plc.

Renishaw product names, designations, and the mark 'apply innovation' are trademarks of Renishaw plc or its subsidiaries.

Other brands, products, or company names are trademarks of their respective owners.

Renishaw plc. Registered in England and Wales. Company no: 1106260.

Registered office: New Mills, Wotton-under-Edge, Glos, GL12 8JR, UK.


WHILE CONSIDERABLE EFFORT WAS MADE TO VERIFY THE ACCURACY OF THIS DOCUMENT AT

PUBLICATION, ALL WARRANTIES, CONDITIONS, REPRESENTATIONS, AND LIABILITY, HOWSOEVER ARISING, ARE EXCLUDED TO THE EXTENT PERMITTED BY LAW.

Part no.: H-1000-2299-02-A

Issued: 10.2021

Documents / Resources

	<p>RENISHAW SFM-B1 Surface Finish Probe Module [pdf] Instructions</p> <p>SFM-B1, Surface Finish Probe Module, Finish Probe Module, Probe Module, SFM-B1, Module</p>
---	---

References

-  [SFP2 surface finish probe for the REVOÂ® system](#)