



[Home](#) » [RenewAire](#) » **RenewAire MC Series Occupancy Sensor Instruction Manual** 

## **Contents** [ [hide](#) ]

- [1 RenewAire MC Series Occupancy Sensor](#)
- [2 Specifications](#)
- [3 OVERVIEW](#)
- [4 INSTALLATION](#)
- [5 SETTINGS](#)
- [6 ELECTRICAL](#)
- [7 FACTORY ASSISTANCE](#)
- [8 About RenewAire](#)
- [9 Accessories](#)
- [10 CONTACT INFORMATION](#)
- [11 FAQs](#)
- [12 Documents / Resources](#)
  - [12.1 References](#)



## **RenewAire MC Series Occupancy Sensor**



## Specifications

- **Coverage floor space:**
  - **Ceiling mount:** 1500 sq. ft.
  - **Wall mount:** 2500 sq. ft.
- **Major motion area:**
  - **Ceiling mount:** 50 ft. diameter
  - **Wall mount:** 68 x 50 ft.

## OVERVIEW

### SPECIFICATIONS

- Passive infrared sensor
- Adjustable time-off delay to 30 minutes
- 24VAC power requirement
- Ceiling mount or directable wall mount
- **Coverage floor space**
  - **Ceiling mount:** 1500 sq. ft.
  - **Wall mount:** 2500 sq. ft.
- **Major motion area**
  - **Ceiling mount:** 50 ft. diameter
  - **Wall mount:** 68 x 50 ft.

Model	Volts	Current	Isolated Relay	Coverage Area	Suggested Mounting Height
MC-C	15-28VAC	30 mA	1 A @ 30 VAC/DC	1500 sq. ft.	8-10 ft.
MC-W	15-28VAC	30 mA	1 A @ 30 VAC/DC	2500 sq. ft.	8-10 ft.

## INSTALLATION

### MC-C CEILING MOUNT

See the Leviton installation instructions provided in the original box for in-details or for more options.

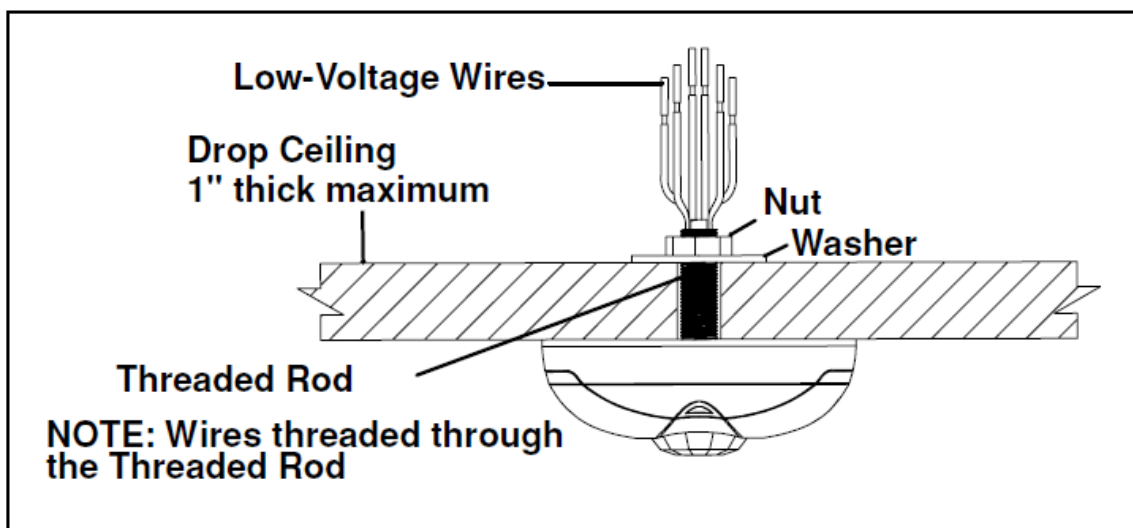


FIGURE 2.1.0 MC-C CEILING MOUNT INSTALLATION

### MC-W WALL MOUNT

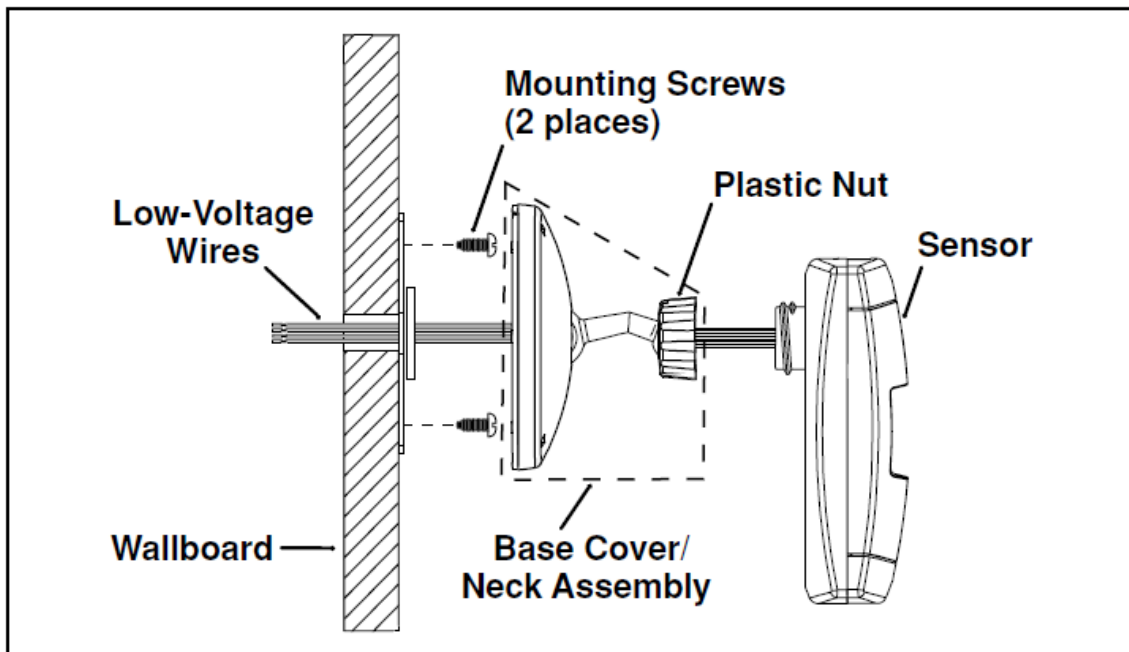


FIGURE 2.2.0 MC-W WALL MOUNT INSTALLATION

## SETTINGS

### ADJUSTMENT KNOBS





Knob Color	Symbol	Function	Knob Setting	Factory Default Setting
Red		Sets the infrared range	Range Setting Full CCW = min. (OFF) Full CW = max.	75% 
Black		Delayed-Off Time	Full CCW = min. (30 sec.) Full CW = max. (30 min.)	50% (10 min.) 

FIGURE 3.1.0 KNOB ADJUSTMENT TABLE

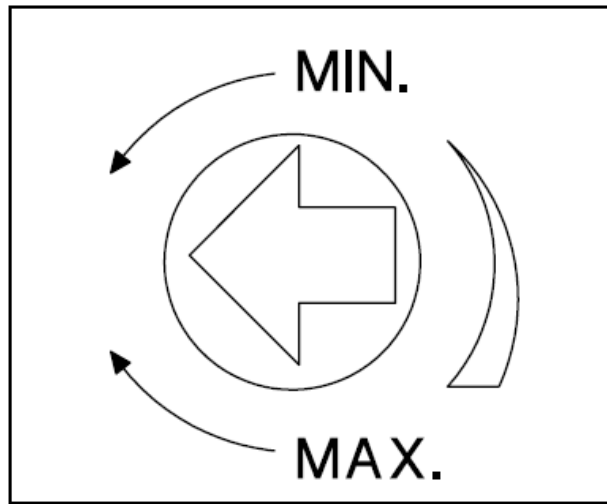


FIGURE 3.1.1 INFRARED RANGE ADJUSTMENT

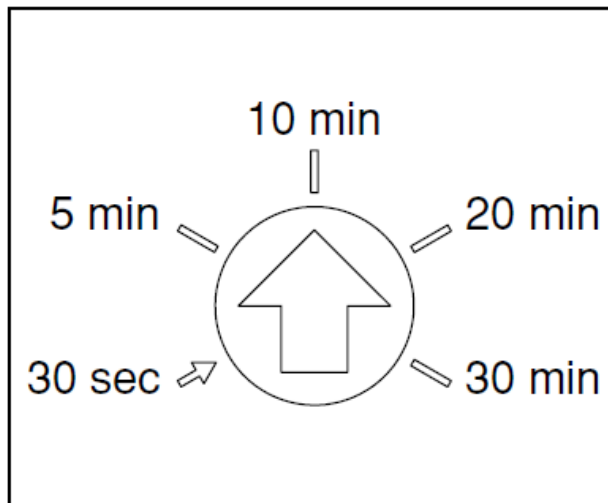


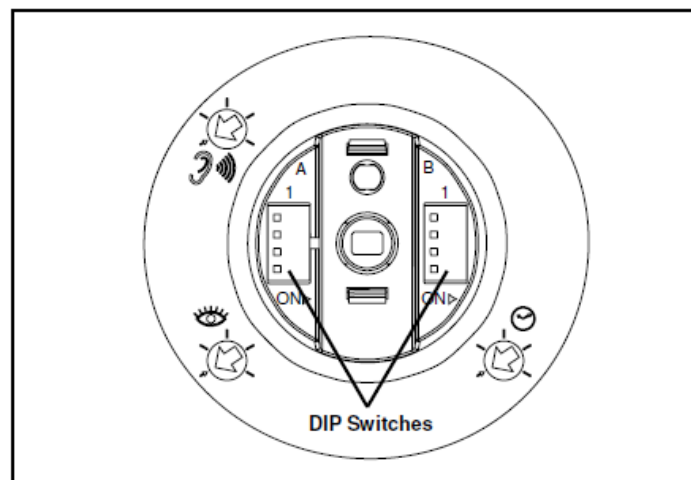
FIGURE 3.1.2 DELAYED—OFF TIME ADJUSTMENT

## DIP SWITCHES

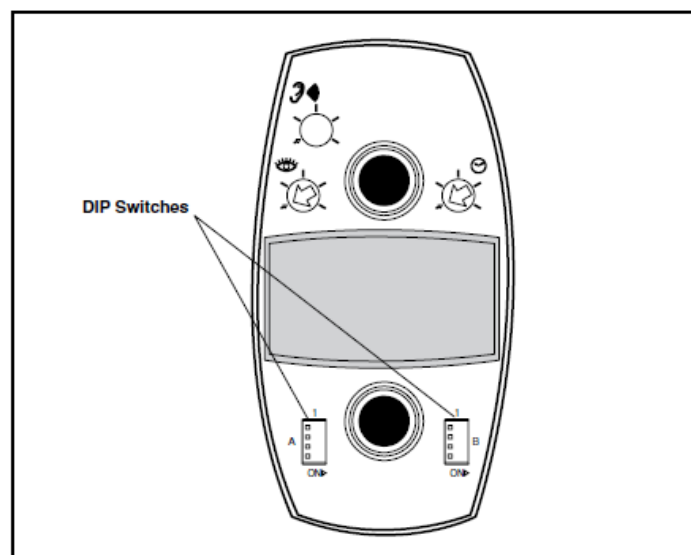
Switch	Switch Functions	Switch Settings	
	Bank A	OFF	ON
A1	N/A	N/A	N/A
A2	N/A	N/A	N/A
A3	Manual Mode	Auto Adapting Enabled	Auto Adapting Disabled
A4	Walk-Through Disabled	Walk-Through Enabled	Walk-Through Disabled

	Bank B	OFF	ON
B1	Override to ON	Auto Mode	Lights Forced ON
B2	Override to OFF	Auto Mode	Lights Forced OFF
B3	Test Mode	OFF ☿ ON ☿ OFF = Enter/Exit Test Mode	
B4	LEDs Disabled	LEDs Enabled	LEDs Disabled

**FIGURE 3.2.0 DIP SWITCH SETTING TABLE**



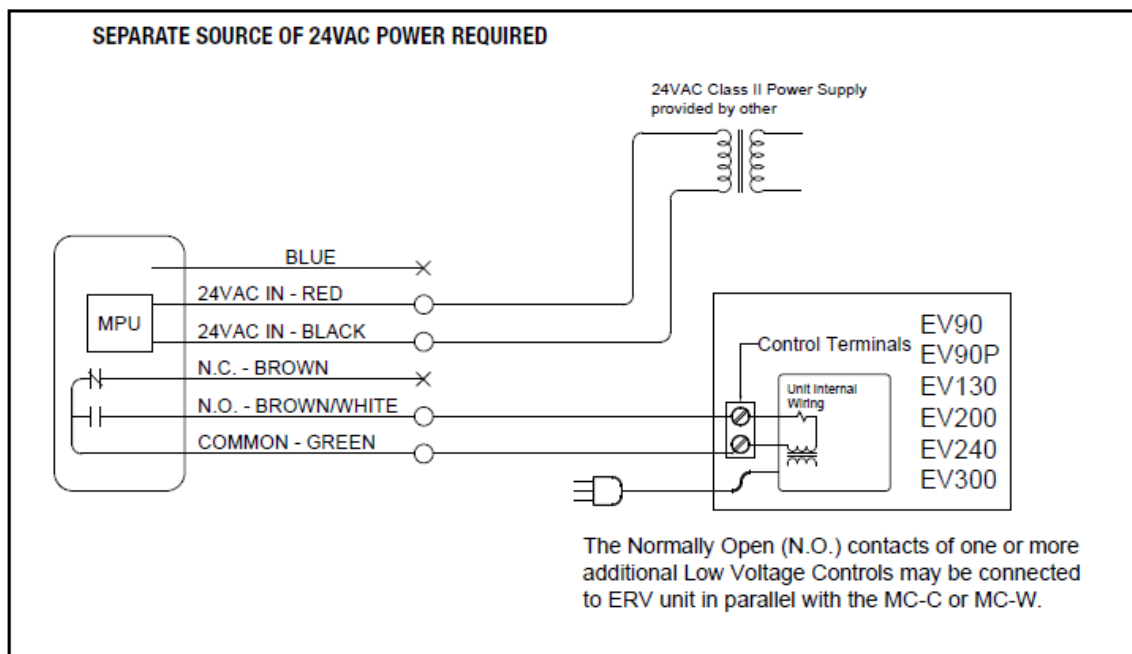
**FIGURE 3.2.1 MC-C DIP SWITCHES**



**FIGURE 3.2.2 MC-W DIP SWITCHES**

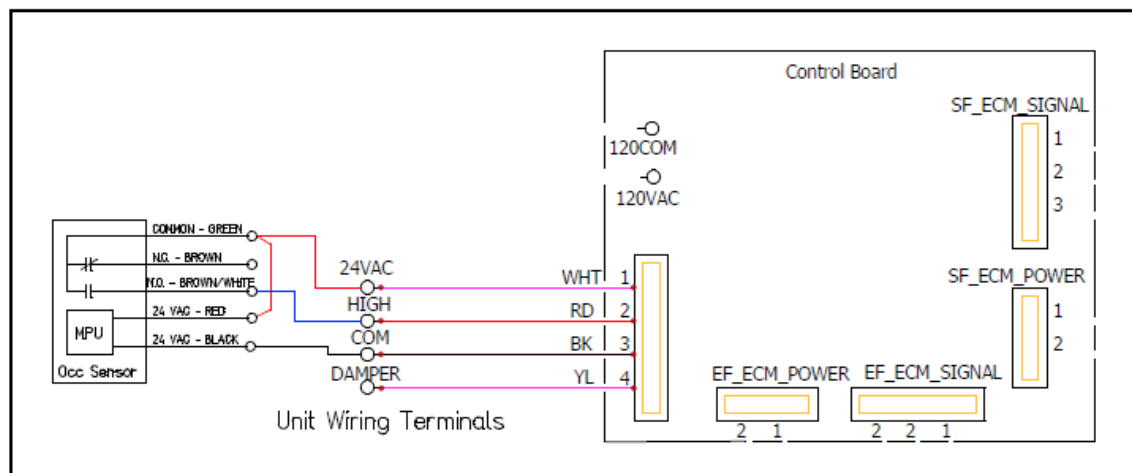
## ELECTRICAL

## WIRING SCHEMATICS



**FIGURE 4.1.0 EV90, EV90P, EV130, EV200, AND EV300 SCHEMATIC**

In this example, Motion Control Occupancy Sensor turns Energy Recovery Ventilator (ERV) on at High speed when space is occupied.



**FIGURE 4.1.1 EV PREMIUM AND SL75 SCHEMATIC**

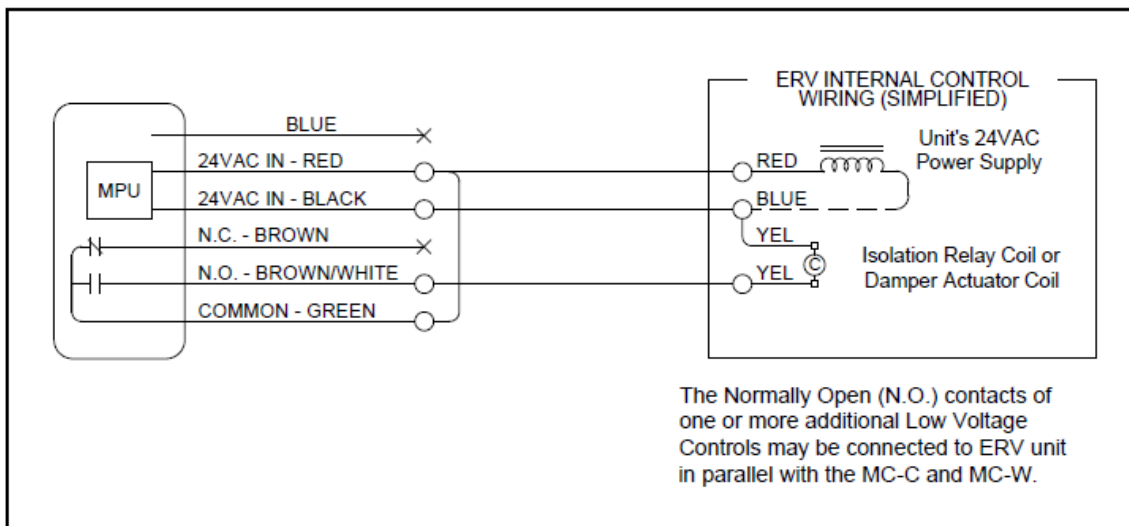


FIGURE 4.1.2 HE1.5IN—STANDARD WIRING (NON-ECM) SCHEMATIC

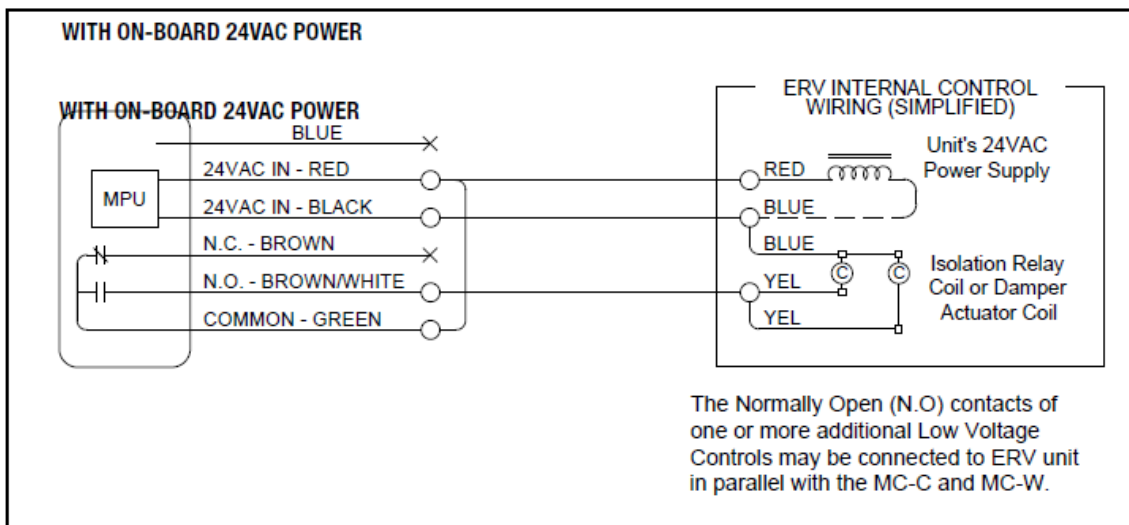


FIGURE 4.1.3 HE1.5IN—MOTORIZED DAMPER(S) OR INDEPENDENT BLOWER CONTROL SCHEMATIC

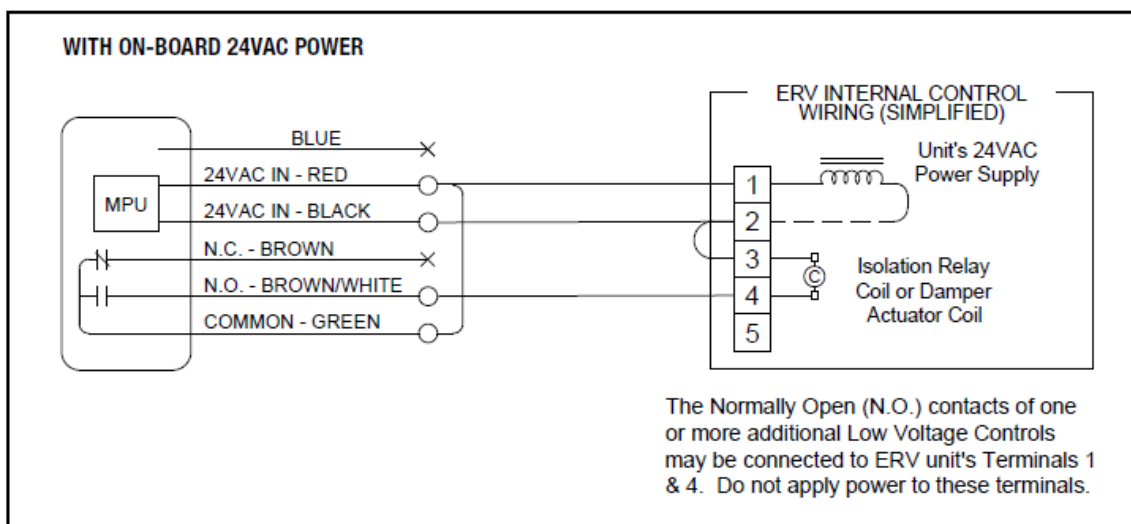


FIGURE 4.1.4 HE1.5RT—STANDARD WIRING (NON-ECM OR VFD UNITS) SCHEMATIC



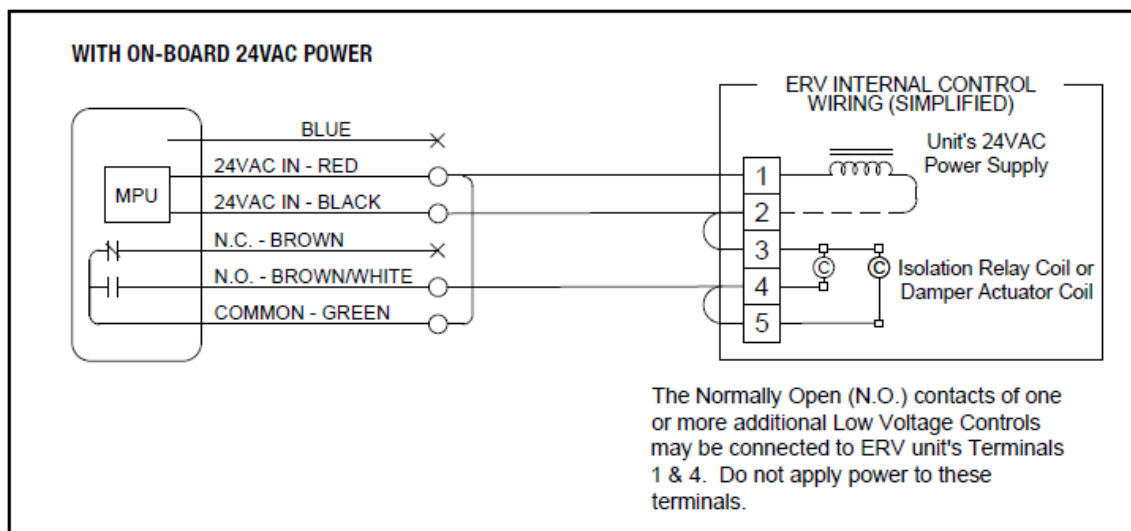


FIGURE 4.1.5 HE1.5RT—MOTORIZED DAMPER(S) OR INDEPENDENT BLOWER CONTROL SCHEMATIC

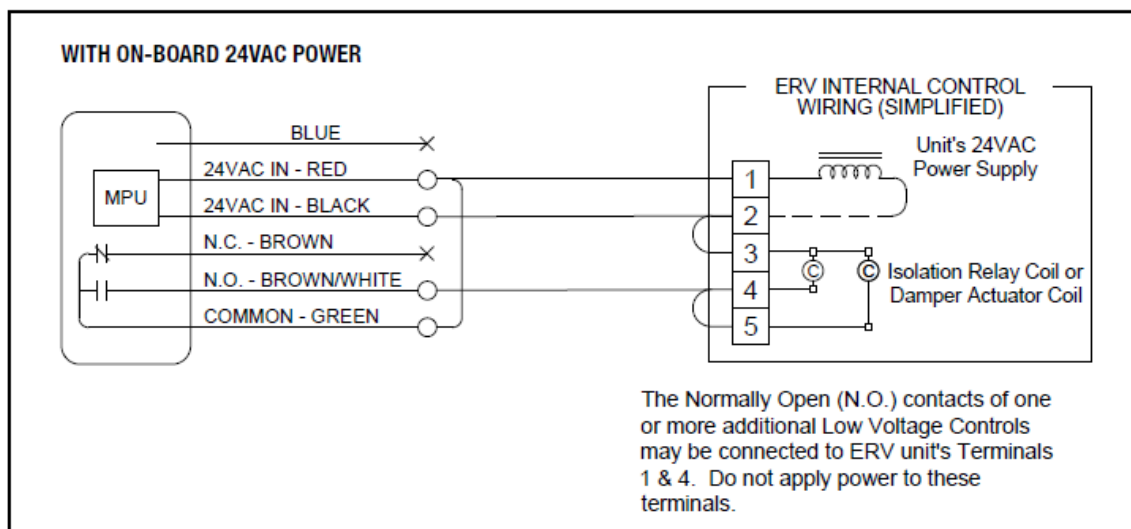


FIGURE 4.1.6 HE2X-8X, LE6X-10X—WITH STANDARD WIRING OR MOTORIZED DAMPER(S) SCHEMATIC

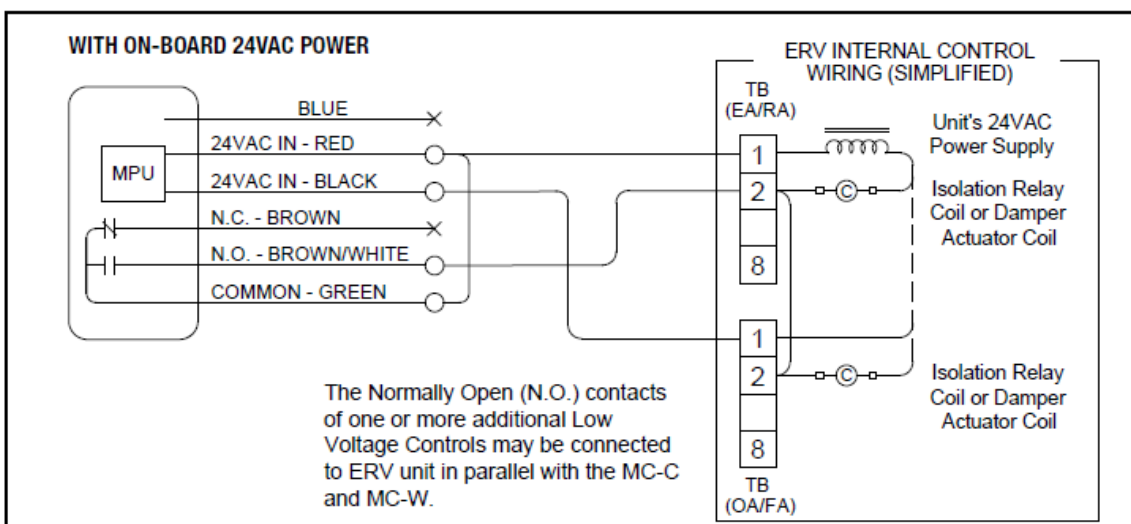
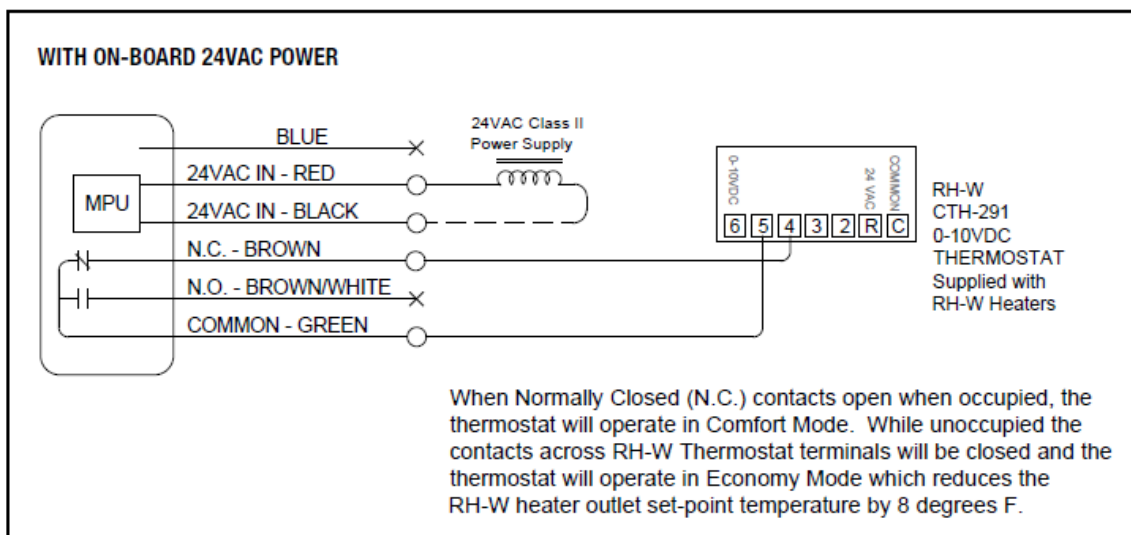
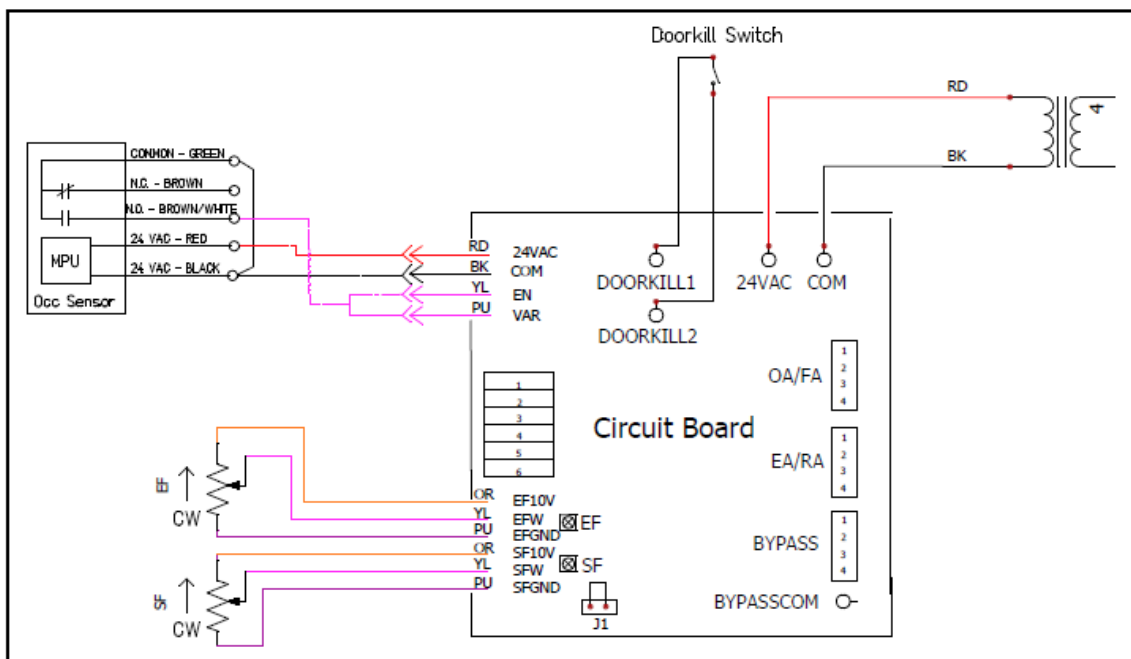


FIGURE 4.1.7 HE1.5—ECM WITH TERMINAL BLOCK (SPEED 1-LOW SPEED ON/OFF) SCHEMATIC

In this example, Motion Control Occupancy Sensor turns the ERV on at speed set by potentiometers when space is occupied.



- **Call** [800-627-4499](tel:800-627-4499)
- **Email:** [RenewAireSupport@RenewAire.com](mailto:RenewAireSupport@RenewAire.com).

## About RenewAire

- For over 40 years, RenewAire has been a pioneer in enhancing indoor air quality (IAQ) in commercial and residential buildings of every size. This is achieved while maximizing sustainability through our fifth-generation, static-plate, enthalpic-core Energy Recovery Ventilators (ERVs) that optimize energy efficiency, lower capital costs via load reduction and decrease operational expenses by minimizing equipment needs, resulting in significant energy savings. Our ERVs are competitively priced, simple to install, easy to use and maintain and have a quick payback. They also enjoy the industry's best warranty with the lowest claims due to long-term reliability derived from innovative design practices, expert workmanship and Quick Response Manufacturing (QRM).
- As the pioneer of static-plate core technology in North America, RenewAire is the largest ERV producer in the USA. We're committed to sustainable manufacturing and lessening our environmental footprint, and to that end our Waunakee, WI plant is 100% powered by wind turbines. The facility is also one of the few buildings worldwide to be LEED and Green Globes certified, as well as having achieved ENERGY STAR Building status. In 2010, RenewAire joined the Soler & Palau (S&P) Ventilation Group in order to provide direct access to the latest in energyefficient air-moving technologies. For more information, visit: [renewaire.com](http://renewaire.com).

## Accessories



MC-C Ceiling Mount



MC-W Wall Mount

## CONTACT INFORMATION

- 201 Raemisch Road
- Waunakee, WI
- 53597
- 800.627.4499
- [RenewAire.com](https://renewaire.com).
- 2025 © RenewAire LLC
- 138280\_008\_JAN25

## FAQs

- **Q: What is the suggested mounting height for the MC Series Occupancy Sensor?**
  - **A:** The suggested mounting height for both MC-C and MC-W models is between 8-10 feet.
- **Q: What is the coverage area of the MC Series Occupancy Sensor?**

- **A:** The coverage area is 1500 sq. ft. for the MC-C (Ceiling Mount) and 2500 sq. ft. for the MC-W (Wall Mount) model.

## Documents / Resources

	<a href="#">RenewAire MC Series Occupancy Sensor [pdf]</a> Instruction Manual MC-C, MC-W, MC Series Occupancy Sensor, MC Series, Occupancy Sensor, Sensor
---	--

## References

- [User Manual](#)

MC Series, MC Series Occupancy Sensor, MC-C, MC-W, Occupancy Sensor, RenewAire, Sensor

## Leave a comment

Your email address will not be published. Required fields are marked \*

Comment \*

Name

Email

Website

---

☐ Save my name, email, and website in this browser for the next time I comment.

**Post Comment**

**Search:**

e.g. whirlpool wrf535swhz

**Search**

[Manuals+](#) | [Upload](#) | [Deep Search](#) | [Privacy Policy](#) | [@manuals.plus](#) | [YouTube](#)

This website is an independent publication and is neither affiliated with nor endorsed by any of the trademark owners. The "Bluetooth®" word mark and logos are registered trademarks owned by Bluetooth SIG, Inc. The "Wi-Fi®" word mark and logos are registered trademarks owned by the Wi-Fi Alliance. Any use of these marks on this website does not imply any affiliation with or endorsement.