



RENESAS RX23W Bluetooth 5.0 Low Energy Module User Guide

[Home](#) » [RENESAS](#) » RENESAS RX23W Bluetooth 5.0 Low Energy Module User Guide 

Contents

- 1 [RENESAS RX23W Bluetooth 5.0 Low Energy Module](#)
- 2 [Introduction](#)
 - 2.1 [About This Document](#)
 - 2.2 [Product Feature](#)
 - 2.3 [Necessary Equipment](#)
- 3 [Startup Procedure](#)
 - 3.1 [Power on](#)
 - 3.2 [Startup Confirmation](#)
- 4 [Operation Check](#)
 - 4.1 [Communication with Smartphone](#)
 - 4.2 [Bluetooth Device Address Confirmation](#)
- 5 [Functionality Evaluation](#)
 - 5.1 [Programming HCI Firmware](#)
 - 5.2 [Connecting BTTS](#)
- 6 [References](#)
 - 6.1 [Restoring to Factory Software](#)
 - 6.2 [Notes on Creating New Development Project](#)
- 7 [Documents / Resources](#)
- 8 [Related Posts](#)



RENESAS RX23W Bluetooth 5.0 Low Energy Module



Introduction

About This Document

This document is a quick start guide for Target Board for RX23W module (Hereafter referred to as this product) equipped with Bluetooth® technology-compatible microcontroller RX23W.

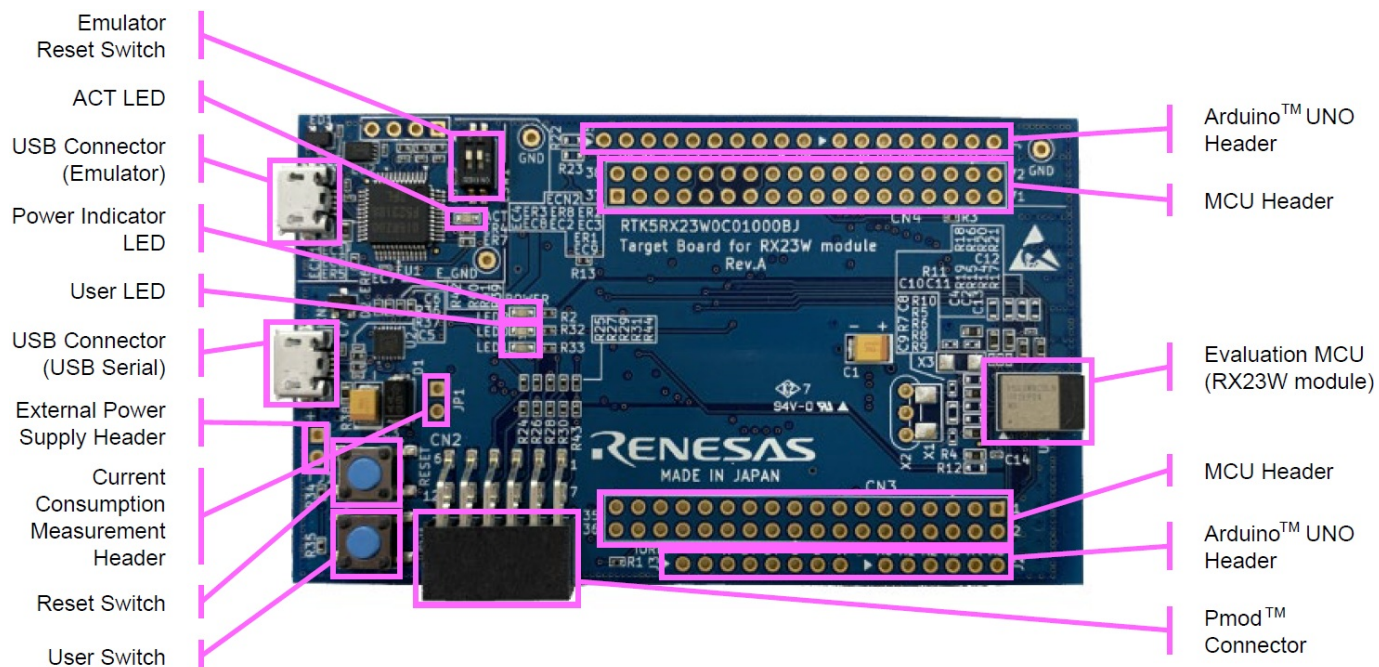
This document describes:

- Startup procedure for this product
- Bluetooth communication with your smartphone
- Preparation for Bluetooth functionality evaluation
- Restoring factory software

Product Feature

Figure illustrates the product feature of this product.

Target Board for RX23W module (RTK5RX23W0C01000BJ)



For details of this product, refer to RX23W Group Target Board for RX23W module User's Manual (R20UT4890).

Necessary Equipment

Since this product does not include a USB cable, prepare an A – micro B type USB cable.

To check the operation according to this document, prepare a smartphone with the OS shown in Table 1-1 and the smartphone app “GATTBrowser” made by Renesas Electronics.

OS	Version
iOS	9.0 or later
Android	5.0.1 or later

iOS Version



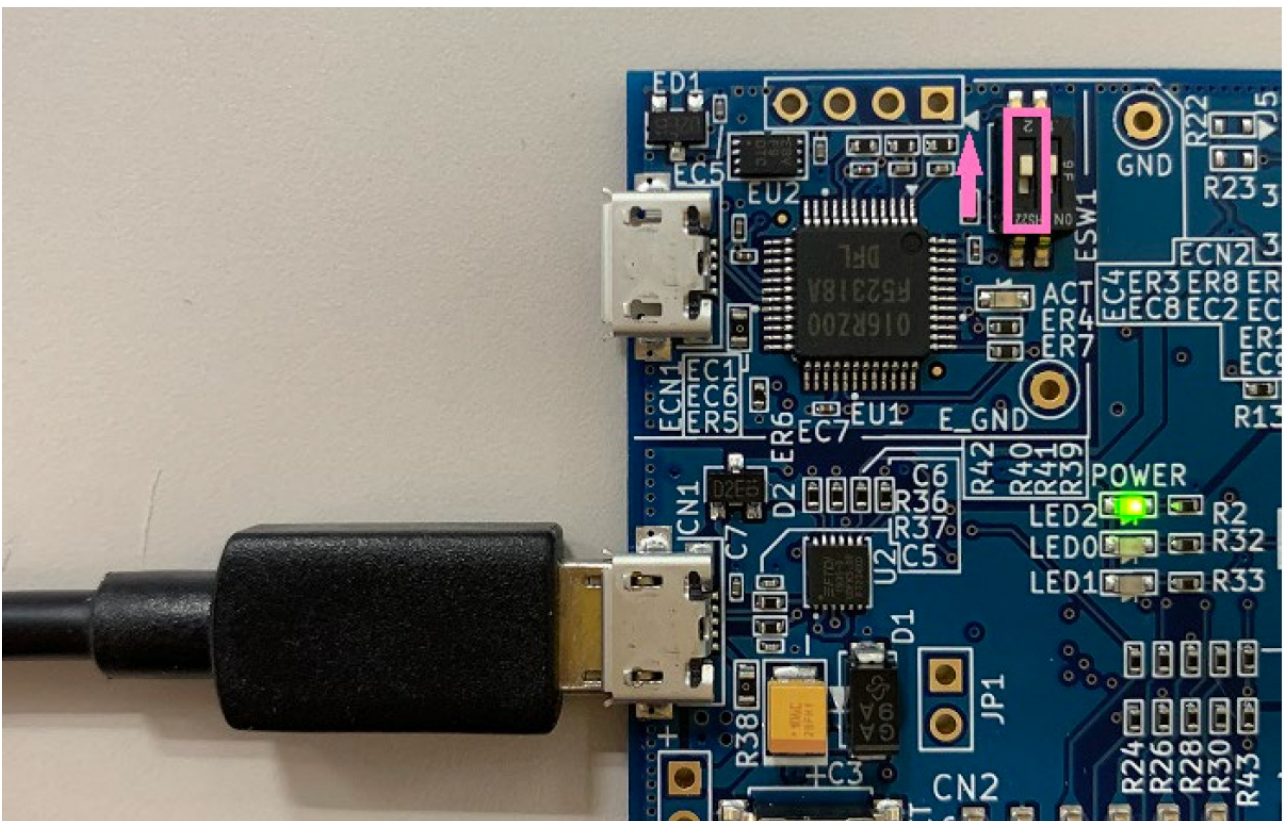
Android Version



Startup Procedure

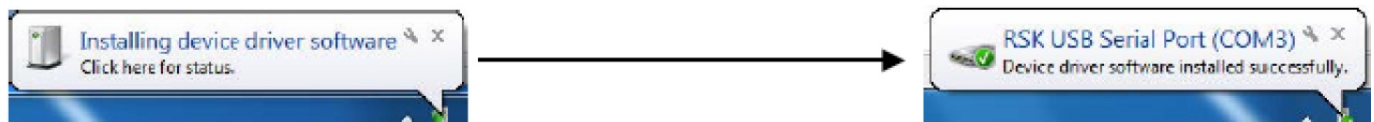
Power on

This product supports USB power supply. Confirm that ESW1-2 is OFF and connect USB connector CN1 to the USB port of your PC (or other power supply) with a USB cable.



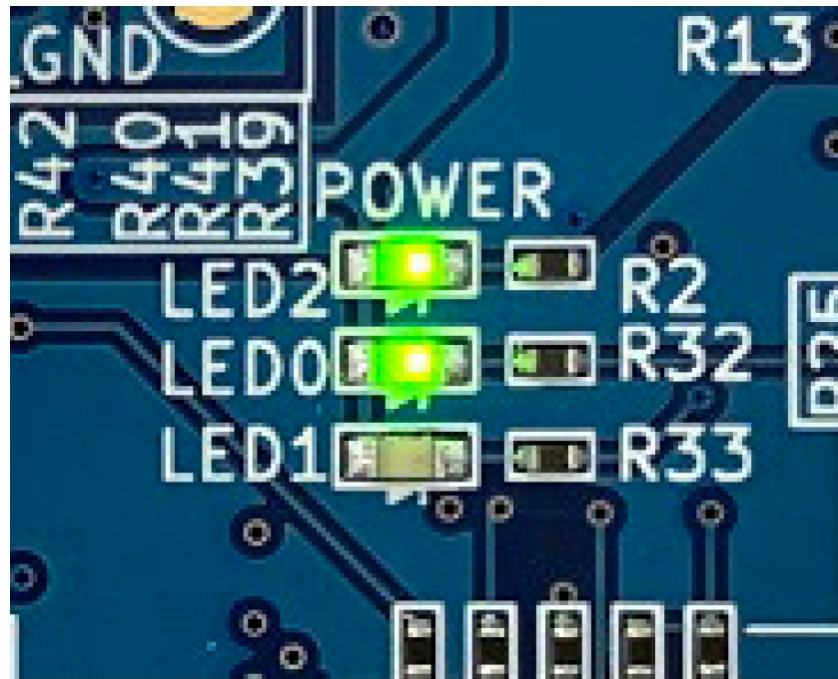
When connecting to your PC for the first time, a driver installation message will appear on the PC screen as shown in Figure 2-2. After that, the driver installation completion message is displayed on your PC.

Note: The display may vary depending on the PC OS.



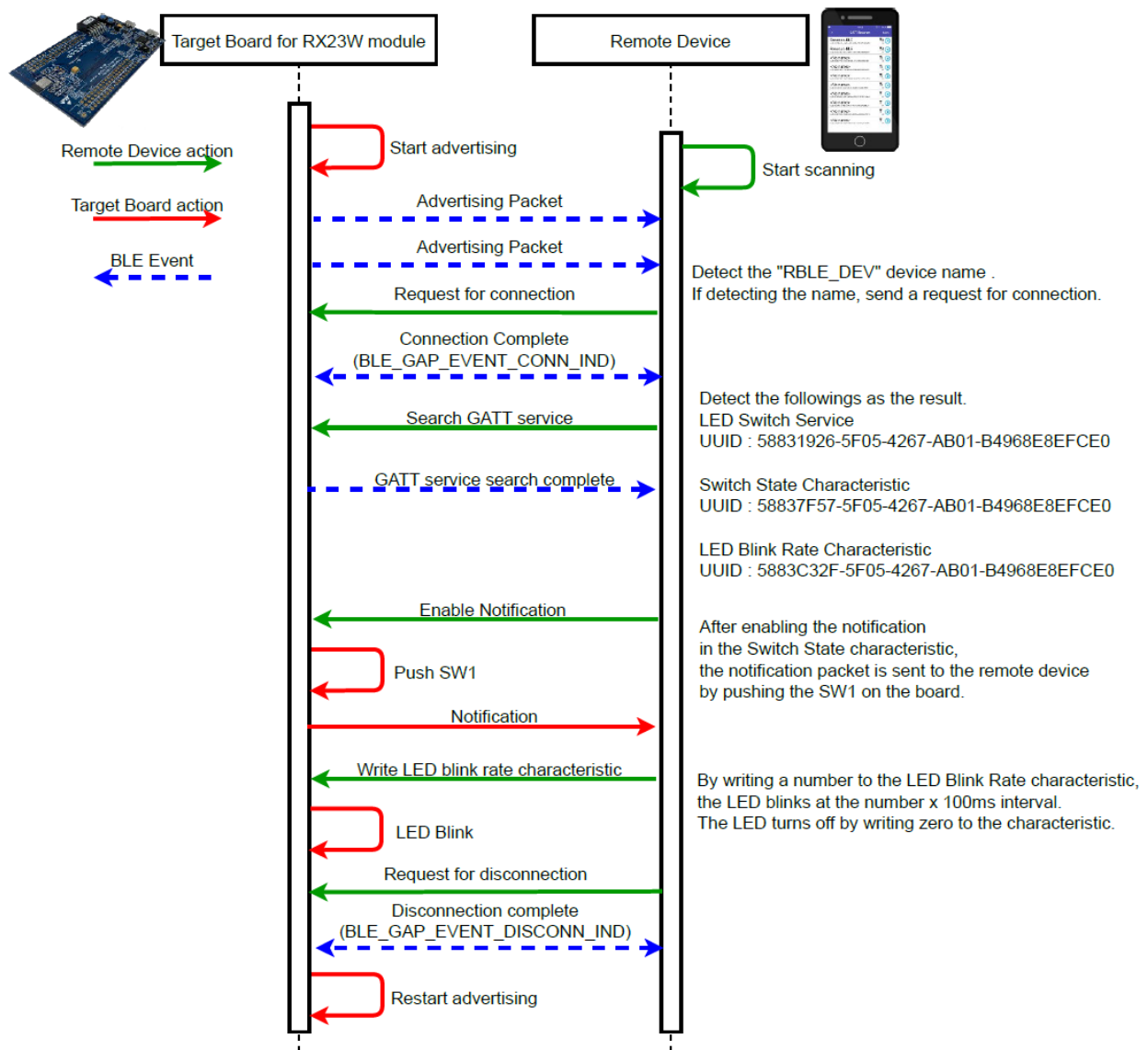
Startup Confirmation

After turning on the power, confirm that LED0 blinks at 1-second intervals. If it does not blink, check that the USB connector CN1 is used or that ESW1-2 is OFF.



Operation Check

Software stored at the time of shipment to this product will start advertising to be connected after the power is turned on. After connecting, it communicates with a remote device such as a smartphone to perform the user switch operation and the user LED blink control. Figure shows the operation of this product.

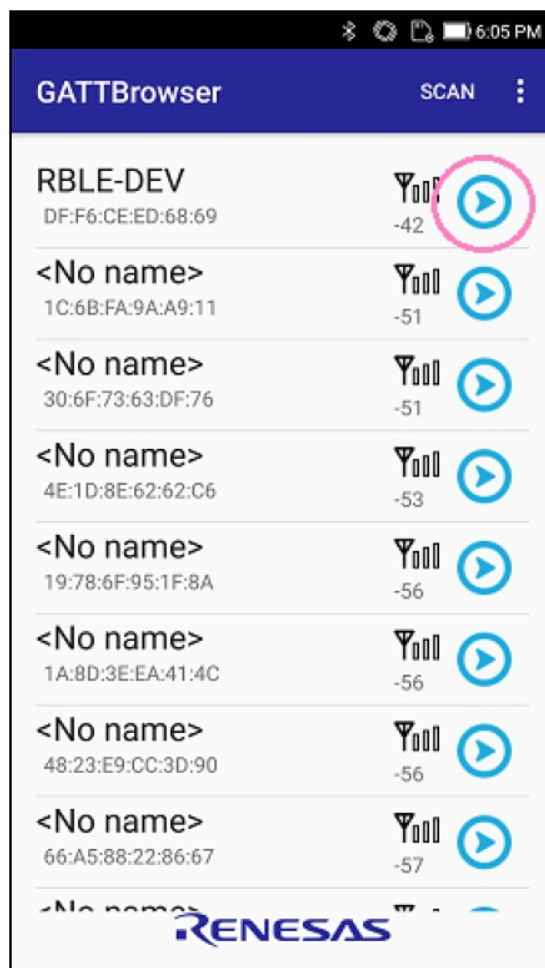


Communication with Smartphone

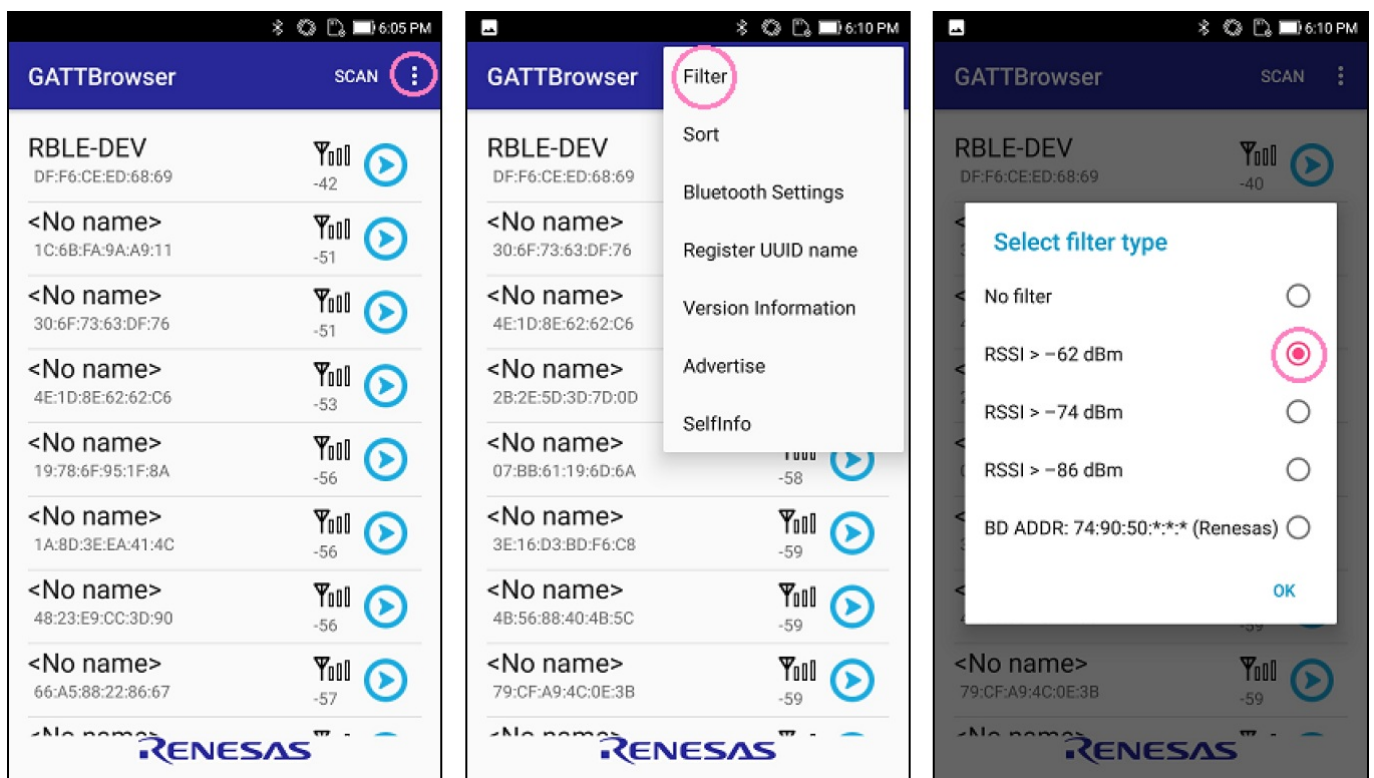
To operate this product from a smartphone, follow the steps below.

Note: The smartphone display varies depending on the OS. In this document, the Android version GATTBrowser screen is used for explanation.

1. Turn on this product.
2. Start GATTBrowser on your smartphone.
3. Tap the arrow icon of the device displayed as "RBLE-DEV" on GATTBrowser to connect.



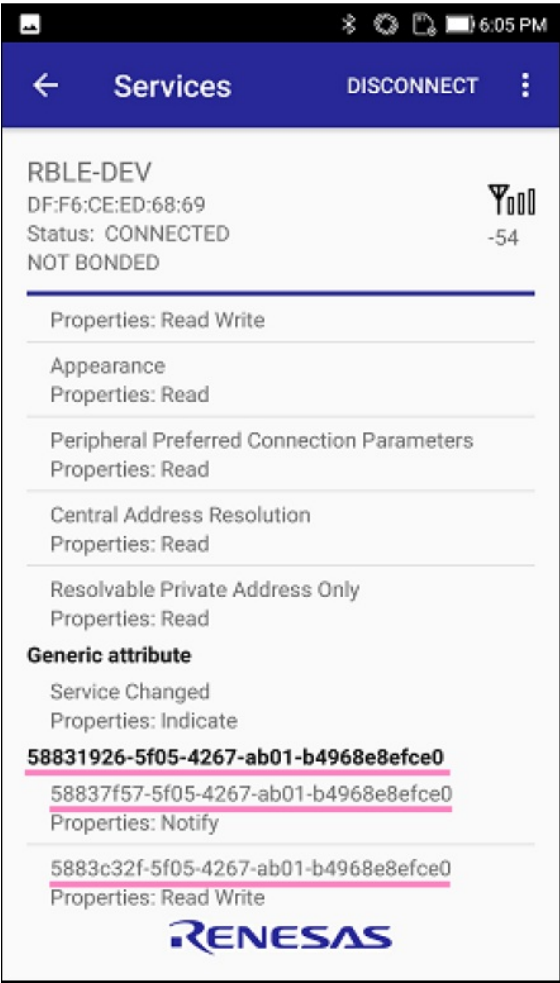
If many devices are discovered and difficult to find, enable the filter function.



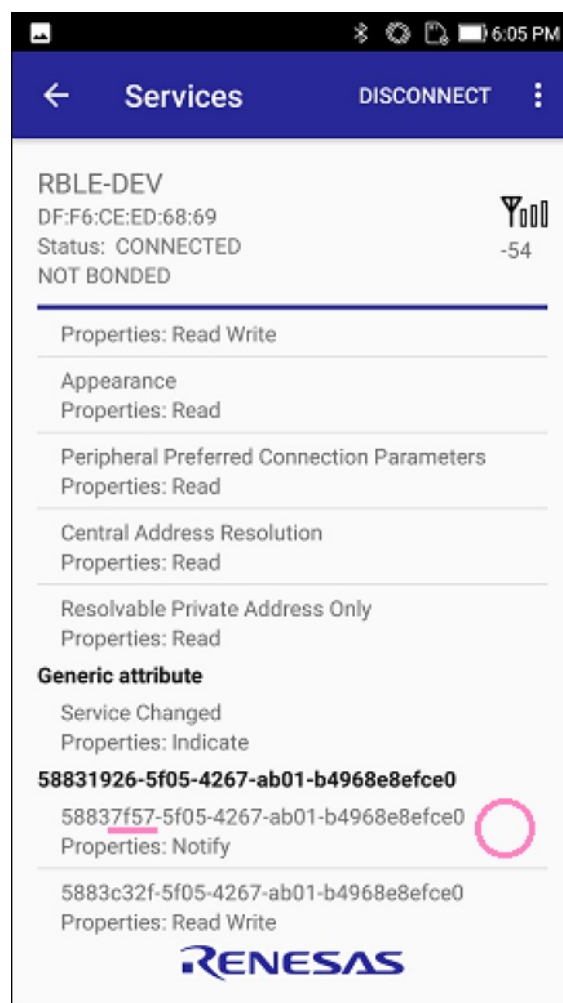
Confirm that the following are detected.

- LED Switch Service (UUID: 58831926-5F05-4267-AB01-B4968E8EFCE0)

- Switch State Characteristic (UUID: 58837F57-5F05-4267-AB01-B4968E8EFCE0)
- LED Blink Rate Characteristic (UUID: 5883C32F-5F05-4267-AB01-B4968E8EFCE0)

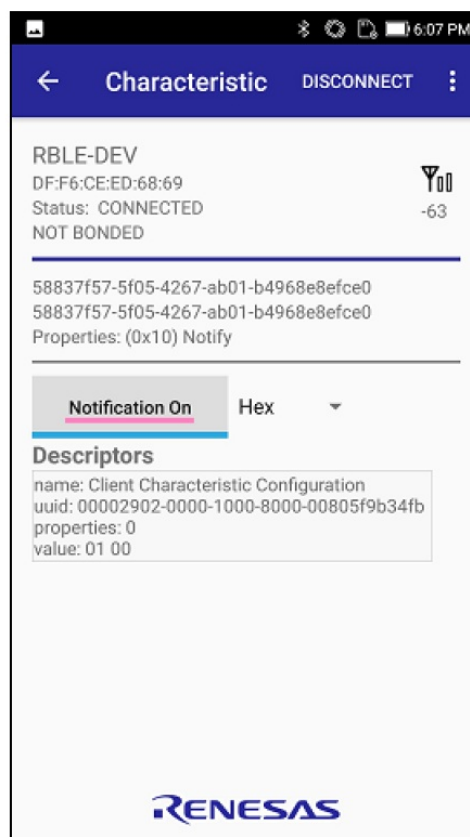
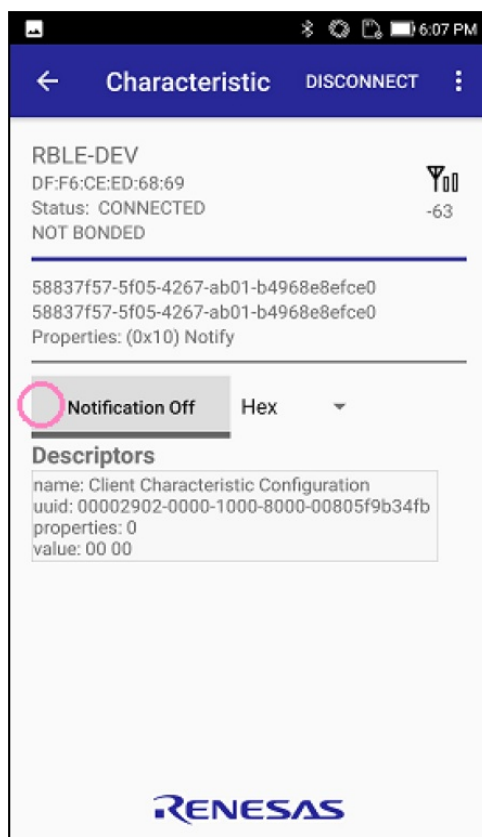


Tap the Switch State characteristic to notify the smartphone of pressing SW1 on this product.

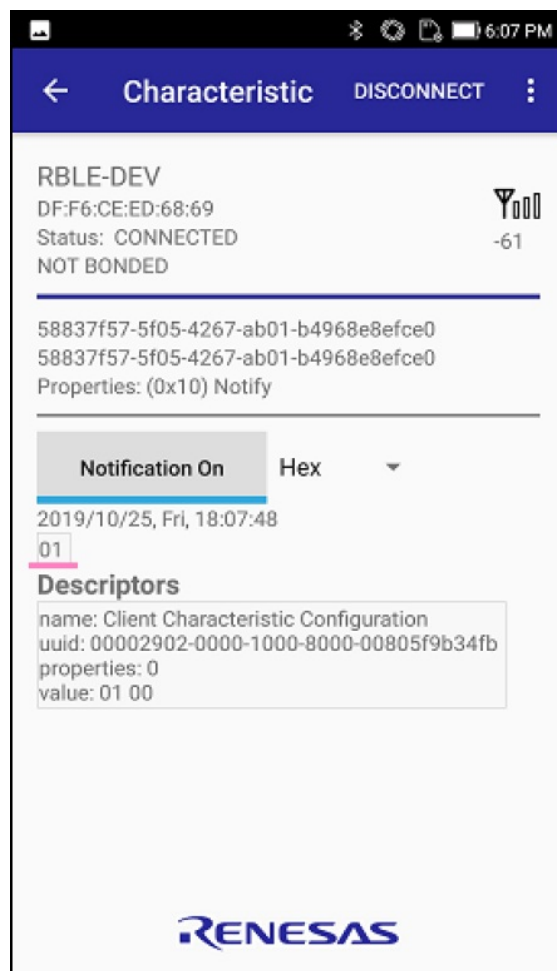


Allow notifications from your smartphone. Tap the “Notification Off” button to change the display to “Notification On”.

Note: In the iOS version of GATTBrowser, tapping the “Enable Notification” button will change the display to “Disable Notification”.

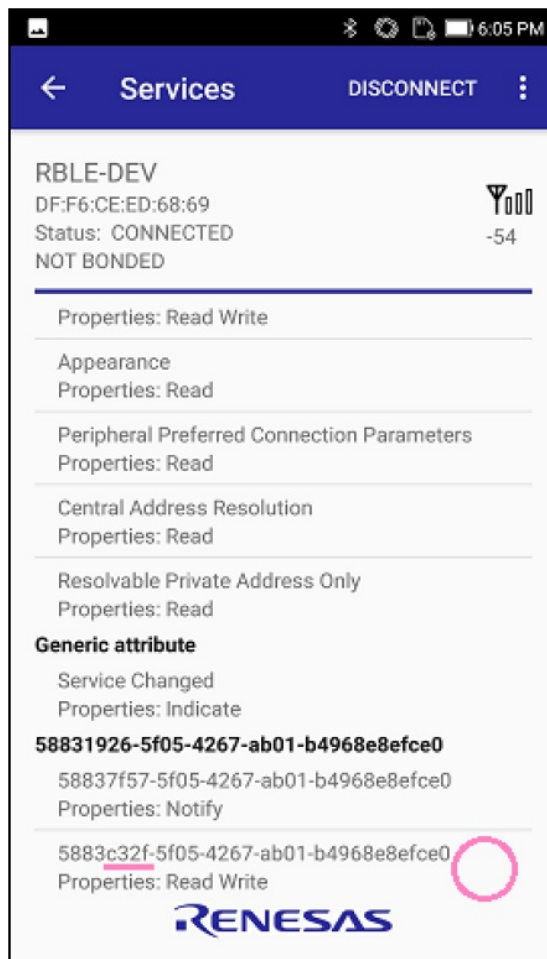


When SW1 on this product is pressed, "01" is notified to GATTBrowser.



Return to the previous screen.

Tap the LED Blink Rate characteristic to change the LED0 blink rate from your smartphone.



Enter a 2-digit hexadecimal number in the text box and tap the “Write” button. LED0 blinks at intervals of entered value × 100ms. Entering 00 turns off LED0.

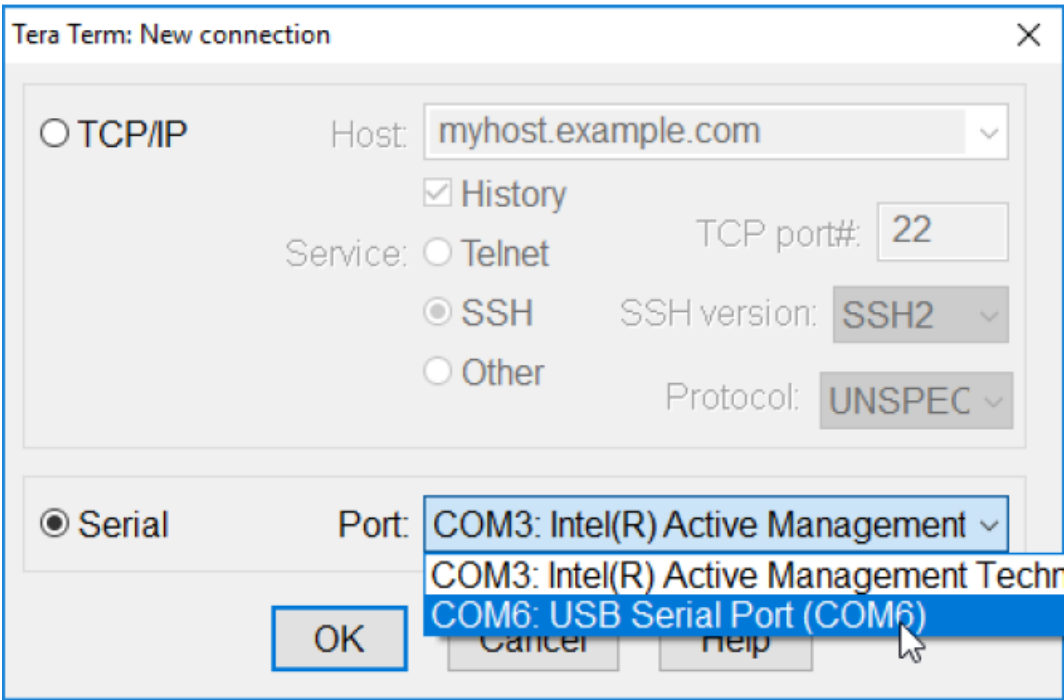


When disconnected, this product will return LED0 to blinking at 1-second intervals and restart Advertising.

Bluetooth Device Address Confirmation

Software stored at the time of shipment to this product starts advertising at Static Device Address after power-on. If it is necessary to identify this product with the Bluetooth Device Address when connecting to this product from a device other than a smartphone, you can check this product’s address using the following procedure.

- 1. Connect this product to your PC.
- 2. Prepare a terminal emulator that supports VT100 emulation on your PC. In this example, Tera Term is used.
- 3. Start Tera Term and select the COM port labeled “USB Serial Port” to which this product is connected.



- 4. Set the terminal and serial port setup in Tera Term as shown in Table 3-1.

Table 3-1 Terminal Emulator Setting

Item	Setting
New-line (Receive)	LF
New-line (Transmit)	CR
Terminal Mode	VT100
Baud rate	115200
Data	8bit
Parity	none
Stop bits	1bit
Flow Control	none

Tera Term: Terminal setup

Terminal size

80 X 24

☒ Term size = win size
☐ Auto window resize

Terminal ID: VT100

Answerback:

☐ Local echo
☐ Auto switch (VT<->TEK)

New-line

Receive: LF

Transmit: CR

OK

Cancel

Help

Tera Term: Serial port setup

Port: COM6

Baud rate: 115200

Data: 8 bit

Parity: none

Stop: 1 bit

Flow control: none

Transmit delay

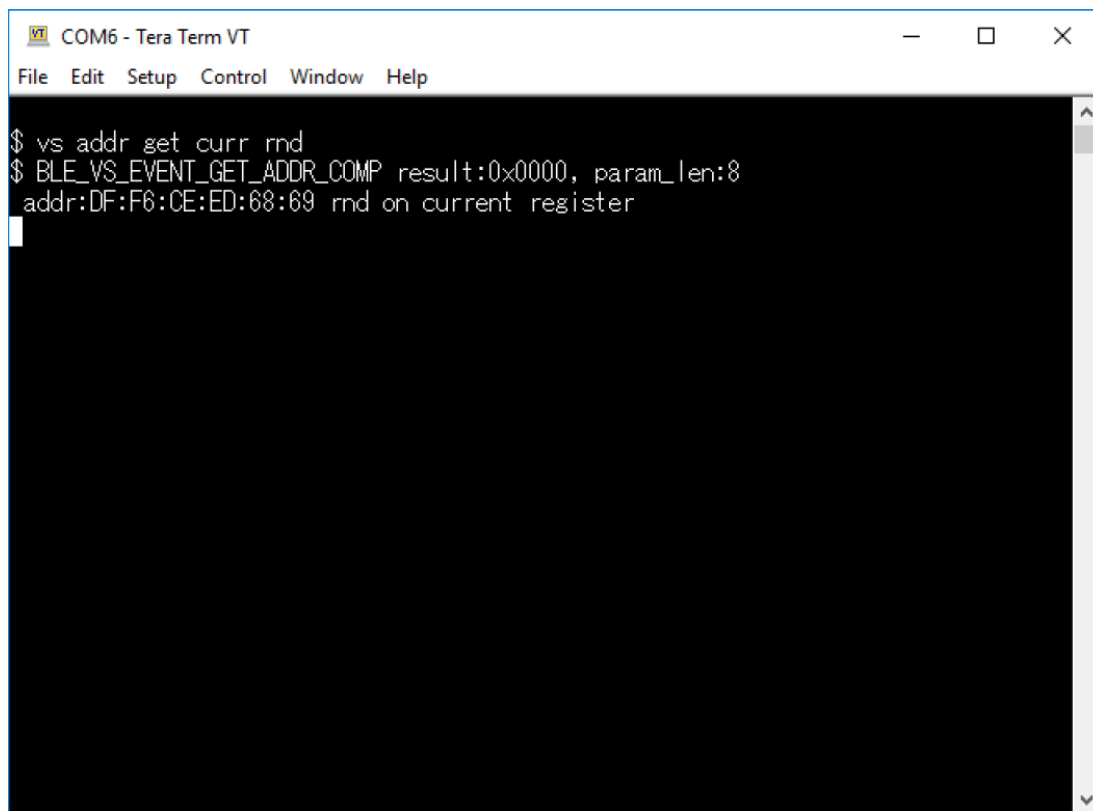
0 msec/char 0 msec/line

OK

Cancel

Help

Press the Enter key in Tera Term, and the prompt "\$" is displayed.
Enter "vs addr get curr rnd" and press the Enter key to check the Bluetooth Device Address.

A screenshot of a Tera Term VT terminal window. The title bar reads 'COM6 - Tera Term VT'. The menu bar includes 'File', 'Edit', 'Setup', 'Control', 'Window', and 'Help'. The terminal area has a black background with white text. The text shows a command prompt '\$' followed by the command 'vs addr get curr rnd'. The response is '\$ BLE_VS_EVENT_GET_ADDR_COMP result:0x0000, param_len:8' followed by 'addr:DF:F6:CE:ED:68:69 rnd on current register' on the next line. A vertical scrollbar is visible on the right side of the terminal window.

```
COM6 - Tera Term VT
File Edit Setup Control Window Help

$ vs addr get curr rnd
$ BLE_VS_EVENT_GET_ADDR_COMP result:0x0000, param_len:8
addr:DF:F6:CE:ED:68:69 rnd on current register
```

Functionality Evaluation

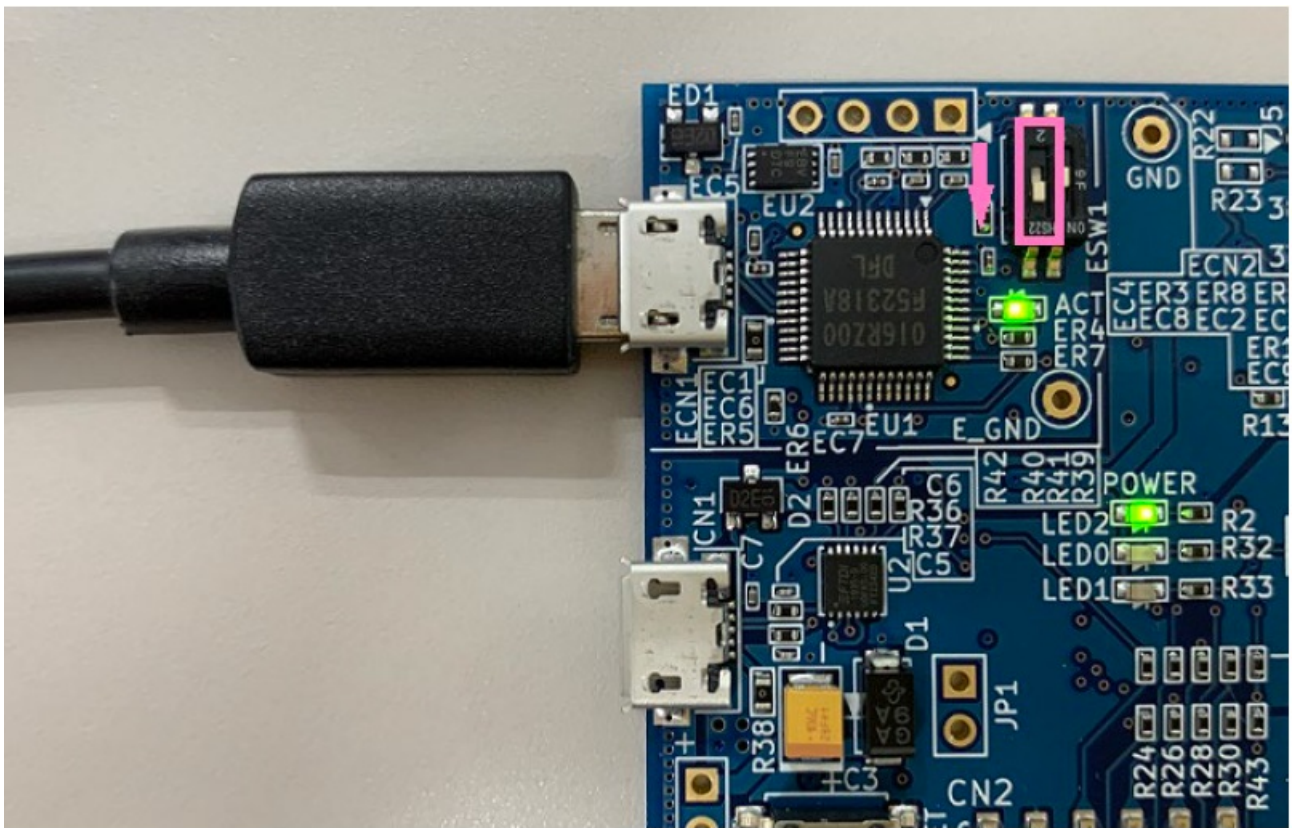
This section describes how to connect the evaluation tool Bluetooth Test Tool Suite (Hereafter referred to as BTTS) for Bluetooth function evaluation. Obtain the BTTS package in advance for the following procedure. Bluetooth Low Energy MCU Bluetooth Test Tool Suite operating instructions Application Note – Sample Code (R01AN4554)

Programming HCI Firmware

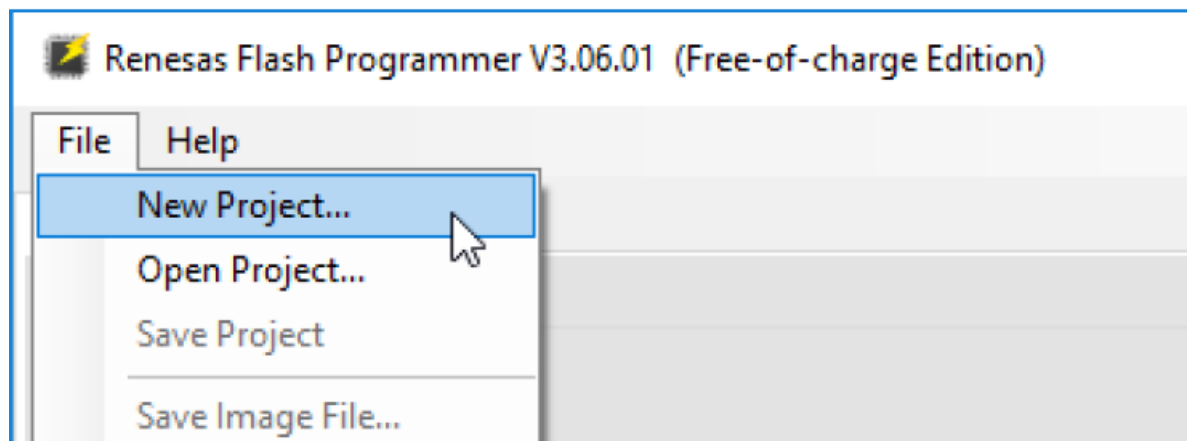
To use BTTS, use the Renesas Flash Programmer (Hereafter referred to as RFP) to program the HCI firmware to this product.

Note: Use RFP v3.06.00 or later.

Change ESW1-2 of this product to ON and connect your PC and ECN1 connector with an A – micro B type USB cable.

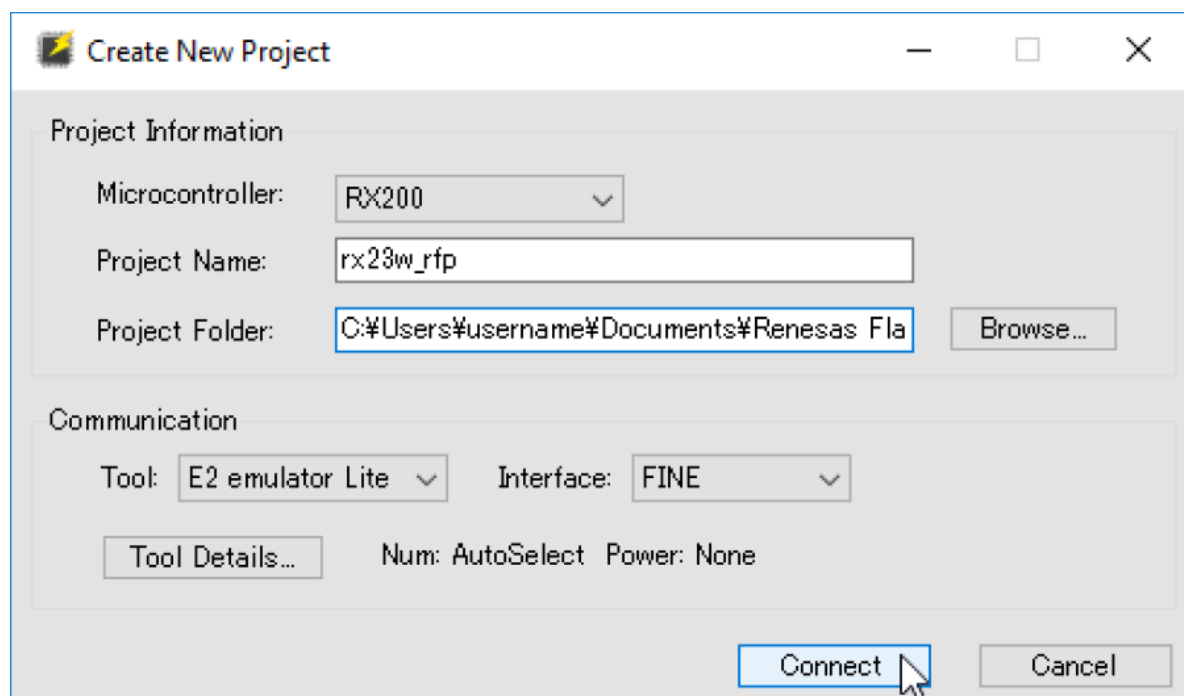


Start RFP and select “File” => “New Project...”.



In the “Create New Project” window, make the following settings and click the “Connect” button.

- Microcontroller: RX200
- Project Name: Any name
- Project Folder: Any folder
- Communication Tool: E2 emulator Lite
- Communication Interface: FINE
- Power: None (default)



Create New Project

Project Information

Microcontroller: RX200

Project Name: rx23w_rfp

Project Folder: C:\Users\username\Documents\Renesas Fla Browse...

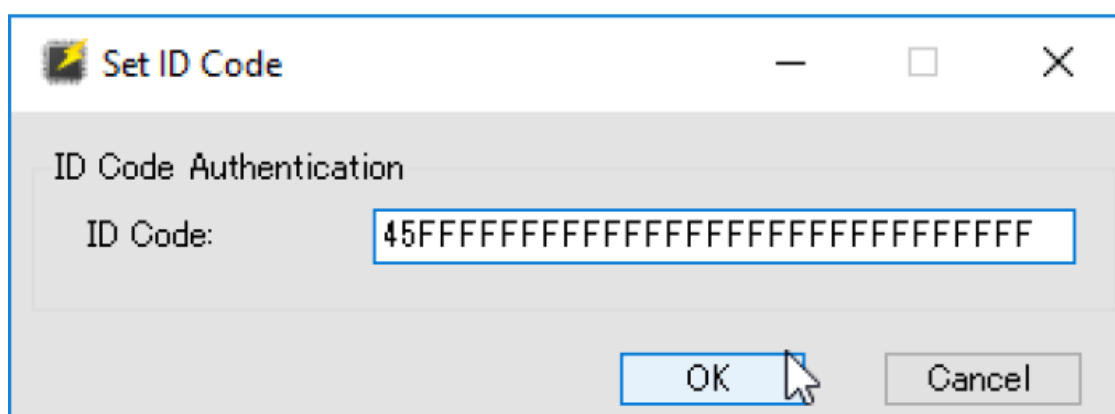
Communication

Tool: E2 emulator Lite Interface: FINE

Tool Details... Num: AutoSelect Power: None

Connect Cancel

When prompted to enter the “Set ID Code”, enter “45FFFFFFFFFFFFFFFFFFFFFFFFFFFFFFFF” and click the “OK” button.



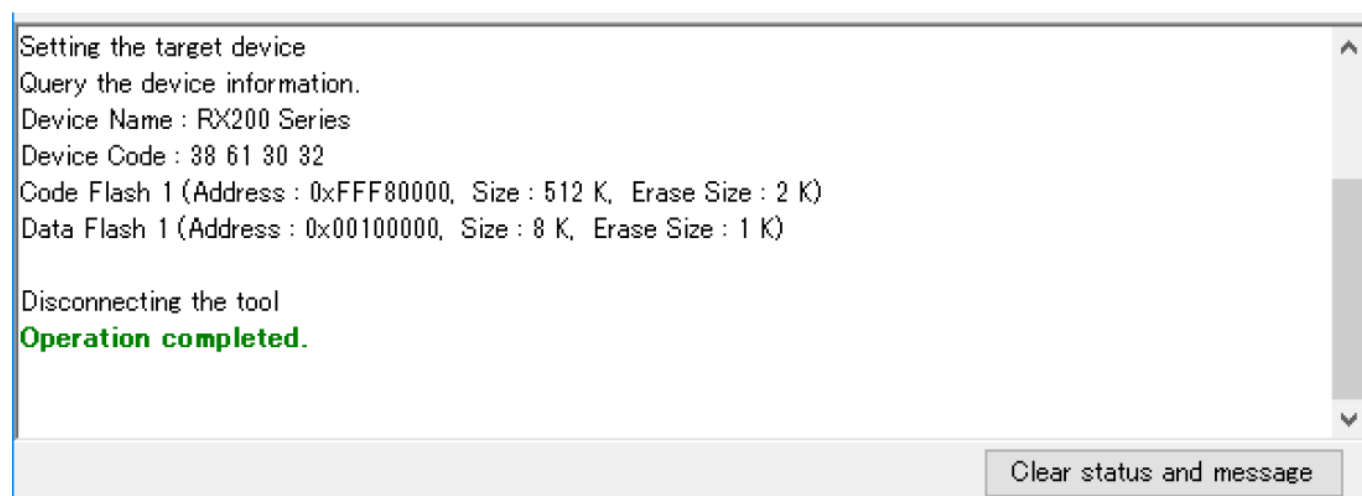
Set ID Code

ID Code Authentication

ID Code: 45FFFFFFFFFFFFFFFFFFFFFFFFFFFFFFFF

OK Cancel

If the connection is successful, “Operation completed.” is displayed.



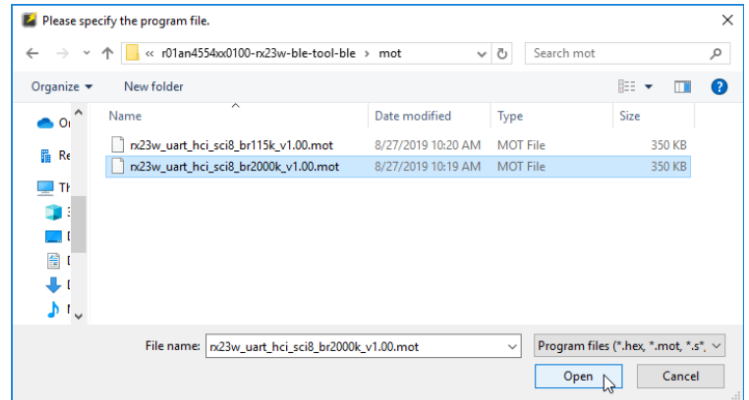
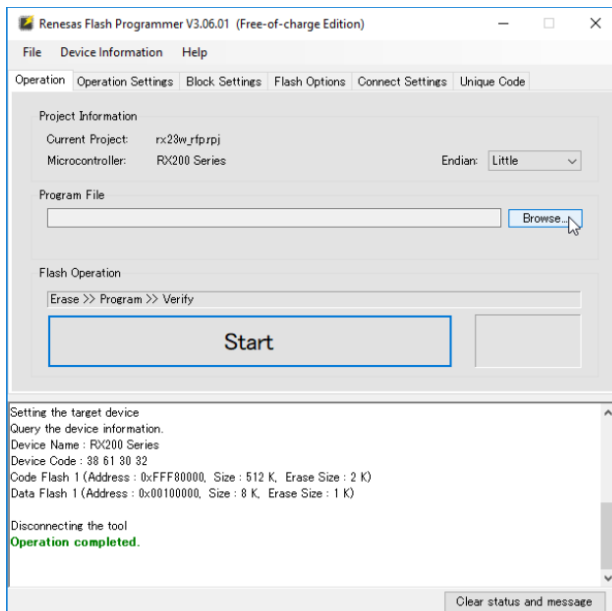
```

Setting the target device
Query the device information.
Device Name : RX200 Series
Device Code : 38 61 30 32
Code Flash 1 (Address : 0xFFFF80000, Size : 512 K, Erase Size : 2 K)
Data Flash 1 (Address : 0x00100000, Size : 8 K, Erase Size : 1 K)

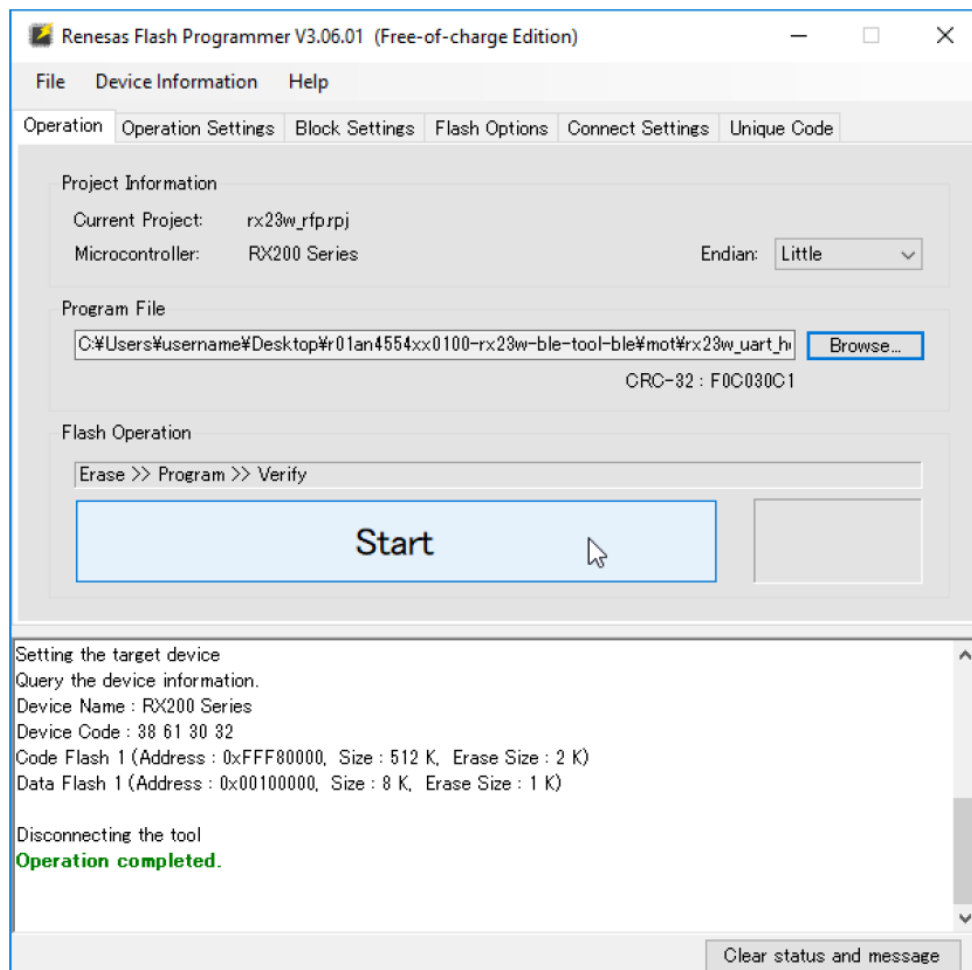
Disconnecting the tool
Operation completed.
  
```

Clear status and message

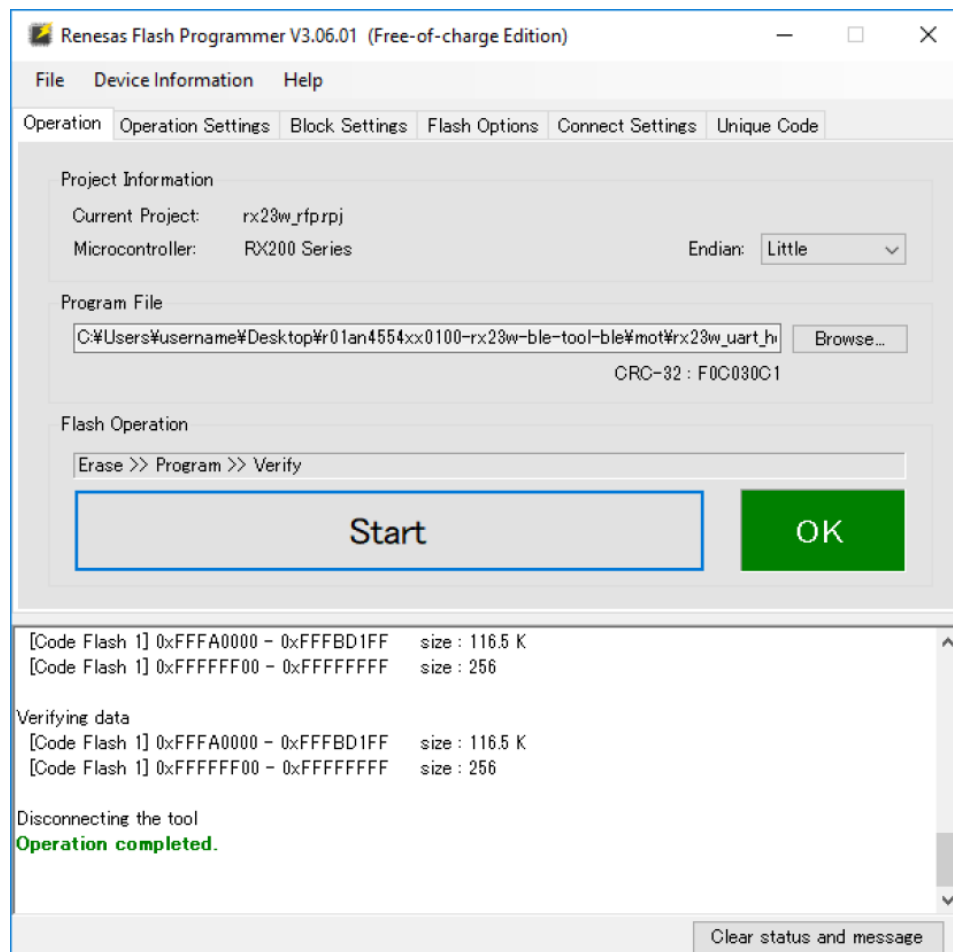
Click the “Browse...” button, select “rx23w_uart_hci_sci8_br2000k_vx.xx.mot” in the mot folder in the BTTS package, and click the “Open” button.



Click the “Start” button on the “Operation” tab to start programming the firmware.



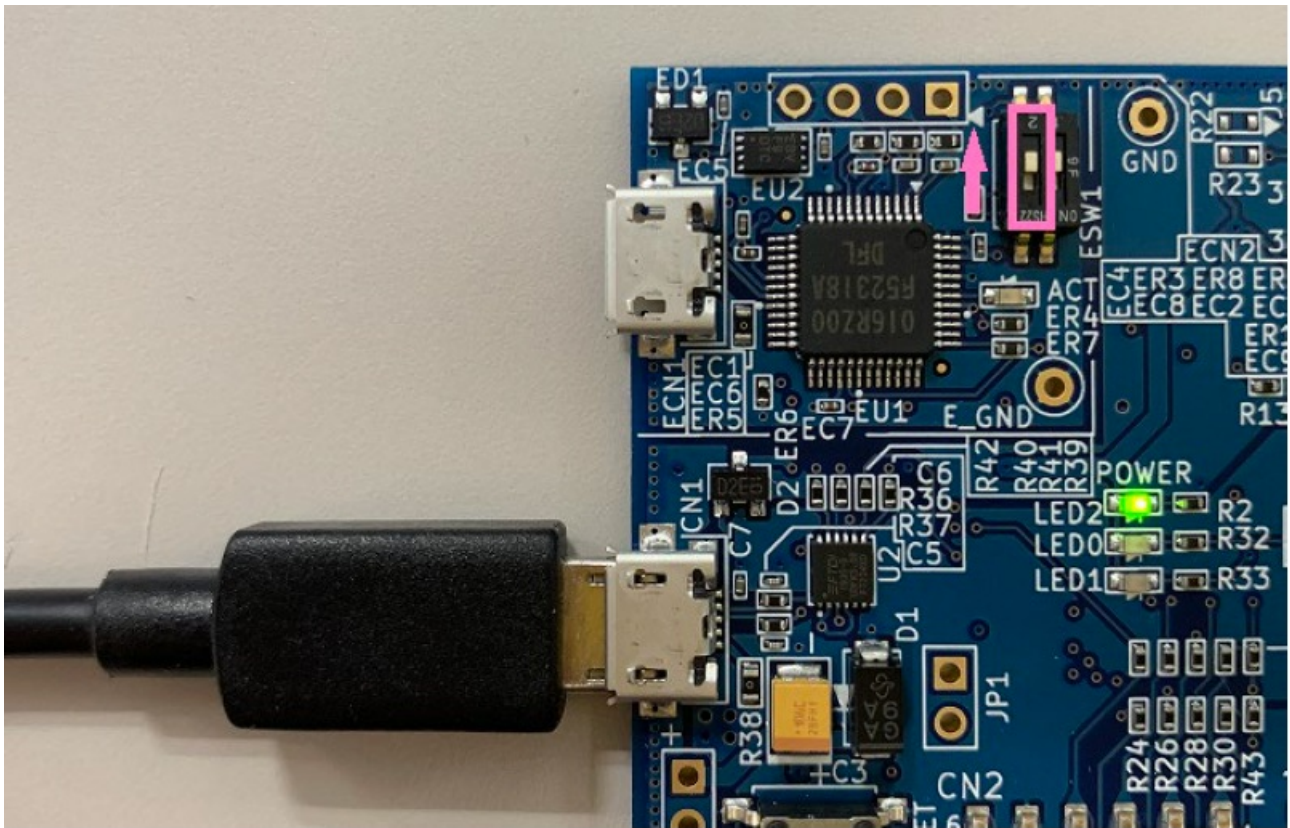
When programming is completed normally, “Operation completed.” And “OK” are displayed.



After programming is complete, disconnect the USB cable that connected this product to your PC.

Connecting BTTS

Change ESW1-2 of this product to OFF and connect your PC and CN1 connector with an A – micro B type USB cable.



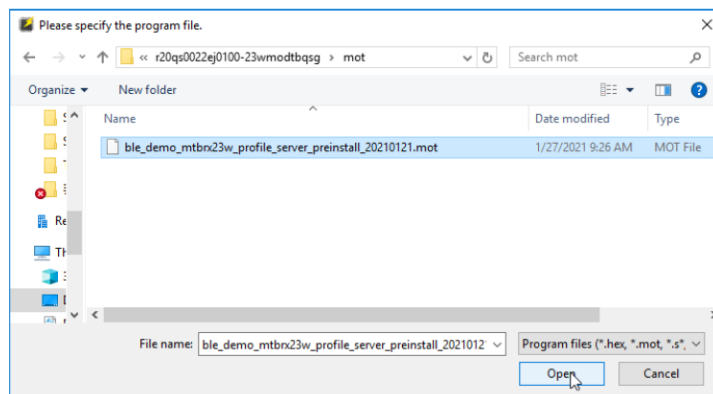
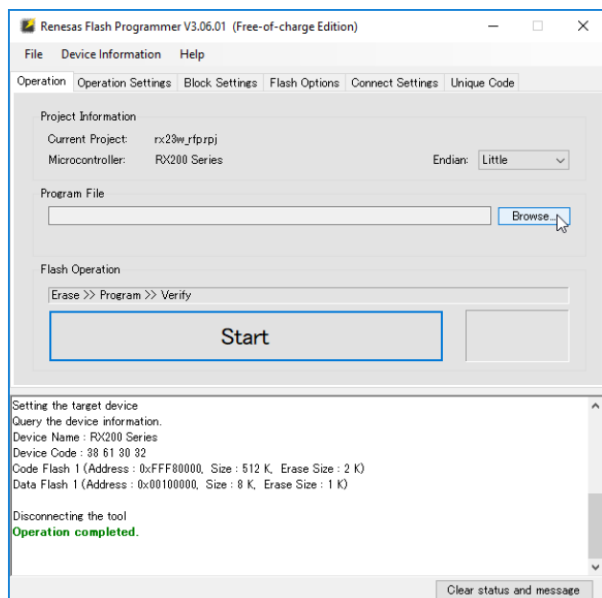
Refer to the Bluetooth Test Tool Suite operating instructions included in the BTTS package for PC settings and BTTS operation.

References

Restoring to Factory Software

To restore the factory software after programming the HCI firmware and other user programs to this product, follow the steps below.

1. The factory software is included in this document archive. If you have not already it, get by selecting “Sample Code” of zip format from the download list after you search for the document number “r20qs0022” on Renesas Electronics website (<https://www.renesas.com/>).
2. Connect this product from RFP according to 1 to 5 of “4.1 Programming HCI Firmware”.
3. Click the “Browse...” button of RFP, select “ble_demo_mtbrx23w_profile_server_preinstall_yyyymmdd.mot” in the mot folder of the downloaded archive, and click the “Open” button.



4. Follow steps 7 to 9 of “4.1 Programming HCI Firmware” to complete the factory software programming.
5. Change ESW1-2 of this product to OFF.

Notes on Creating New Development Project

The factory software of this product has the flash memory protection enabled to prevent inadvertent overwriting. When creating a new development project for code design with this product, the ID code “45FFFFFFFFFFFFFFFFFFFFFFFFFFFFFFFF” must be set before connecting to the on-board emulator of this product from the integrated development environment. Refer to the following document for details on how to create a project including ID code settings.

RX23W Group BLE Module Firmware Integration Technology Application Note (R01AN4860)

Revision History

Rev.	Date	Description	
		Page	Summary
1.00	Mar. 30. 21	—	First edition issued.

General Precautions in the Handling of Microprocessing Unit and Microcontroller Unit Products

The following usage notes are applicable to all Microprocessing unit and Microcontroller unit products from Renesas. For detailed usage notes on the products covered by this document, refer to the relevant sections of the document as well as any technical updates that have been issued for the products.

1. Precaution against Electrostatic Discharge (ESD)

A strong electrical field, when exposed to a CMOS device, can cause destruction of the gate oxide and ultimately degrade the device operation. Steps must be taken to stop the generation of static electricity as much as possible, and quickly dissipate it when it occurs. Environmental control must be adequate. When it is

dry, a humidifier should be used. This is recommended to avoid using insulators that can easily build up static electricity. Semiconductor devices must be stored and transported in an anti-static container, static shielding bag or conductive material. All test and measurement tools including work benches and floors must be grounded. The operator must also be grounded using a wrist strap. Semiconductor devices must not be touched with bare hands. Similar precautions must be taken for printed circuit boards with mounted semiconductor devices.

2. Processing at power-on

The state of the product is undefined at the time when power is supplied. The states of internal circuits in the LSI are indeterminate and the states of register settings and pins are undefined at the time when power is supplied. In a finished product where the reset signal is applied to the external reset pin, the states of pins are not guaranteed from the time when power is supplied until the reset process is completed. In a similar way, the states of pins in a product that is reset by an on-chip power-on reset function are not guaranteed from the time when power is supplied until the power reaches the level at which resetting is specified.

3. Input of signal during power-off state

Do not input signals or an I/O pull-up power supply while the device is powered off. The current injection that results from input of such a signal or I/O pull-up power supply may cause malfunction and the abnormal current that passes in the device at this time may cause degradation of internal elements. Follow the guideline for input signal during power-off state as described in your product documentation.

4. Handling of unused pins

Handle unused pins in accordance with the directions given under handling of unused pins in the manual. The input pins of CMOS products are generally in the high-impedance state. In operation with an unused pin in the open-circuit state, extra electromagnetic noise is induced in the vicinity of the LSI, an associated shoot-through current flows internally, and malfunctions occur due to the false recognition of the pin state as an input signal become possible.

5. Clock signals

After applying a reset, only release the reset line after the operating clock signal becomes stable. When switching the clock signal during program execution, wait until the target clock signal is stabilized. When the clock signal is generated with an external resonator or from an external oscillator during a reset, ensure that the reset line is only released after full stabilization of the clock signal. Additionally, when switching to a clock signal produced with an external resonator or by an external oscillator while program execution is in progress, wait until the target clock signal is stable.

6. Voltage application waveform at input pin

Waveform distortion due to input noise or a reflected wave may cause malfunction. If the input of the CMOS device stays in the area between V_{IL} (Max.) and V_{IH} (Min.) due to noise, for example, the device may malfunction. Take care to prevent chattering noise from entering the device when the input level is fixed, and also in the transition period when the input level passes through the area between V_{IL} (Max.) and V_{IH} (Min.).

7. Prohibition of access to reserved addresses

Access to reserved addresses is prohibited. The reserved addresses are provided for possible future expansion of functions. Do not access these addresses as the correct operation of the LSI is not guaranteed.

8. Differences between products

Before changing from one product to another, for example to a product with a different part number, confirm that the change will not lead to problems. The characteristics of a microprocessing unit or microcontroller unit products in the same group but having a different part number might differ in terms of internal memory capacity, layout pattern, and other factors, which can affect the ranges of electrical characteristics, such as

characteristic values, operating margins, immunity to noise, and amount of radiated noise. When changing to a product with a different part number, implement a system-evaluation test for the given product.

Notice

1. Descriptions of circuits, software and other related information in this document are provided only to illustrate the operation of semiconductor products and application examples. You are fully responsible for the incorporation or any other use of the circuits, software, and information in the design of your product or system. Renesas Electronics disclaims any and all liability for any losses and damages incurred by you or third parties arising from the use of these circuits, software, or information.
2. Renesas Electronics hereby expressly disclaims any warranties against and liability for infringement or any other claims involving patents, copyrights, or other intellectual property rights of third parties, by or arising from the use of Renesas Electronics products or technical information described in this document, including but not limited to, the product data, drawings, charts, programs, algorithms, and application examples.
3. No license, express, implied or otherwise, is granted hereby under any patents, copyrights or other intellectual property rights of Renesas Electronics or others.
4. You shall be responsible for determining what licenses are required from any third parties, and obtaining such licenses for the lawful import, export, manufacture, sales, utilization, distribution or other disposal of any products incorporating Renesas Electronics products, if required.
5. You shall not alter, modify, copy, or reverse engineer any Renesas Electronics product, whether in whole or in part. Renesas Electronics disclaims any and all liability for any losses or damages incurred by you or third parties arising from such alteration, modification, copying or reverse engineering.
6. Renesas Electronics products are classified according to the following two quality grades: "Standard" and "High Quality". The intended applications for each Renesas Electronics product depends on the product's quality grade, as indicated below.

"Standard": Computers; office equipment; communications equipment; test and measurement equipment; audio and visual equipment; home electronic appliances; machine tools; personal electronic equipment; industrial robots; etc.

"High Quality": Transportation equipment (automobiles, trains, ships, etc.); traffic control (traffic lights); large-scale communication equipment; key financial terminal systems; safety control equipment; etc.

Unless expressly designated as a high reliability product or a product for harsh environments in a Renesas Electronics data sheet or other Renesas Electronics document, Renesas Electronics products are not intended or authorized for use in products or systems that may pose a direct threat to human life or bodily injury (artificial life support devices or systems; surgical implantations; etc.), or may cause serious property damage (space system; undersea repeaters; nuclear power control systems; aircraft control systems; key plant systems; military equipment; etc.). Renesas Electronics disclaims any and all liability for any damages or losses incurred by you or any third parties arising from the use of any Renesas Electronics product that is inconsistent with any Renesas Electronics data sheet, user's manual or other Renesas Electronics document.

7. No semiconductor product is absolutely secure. Notwithstanding any security measures or features that may be implemented in Renesas Electronics hardware or software products, Renesas Electronics shall have absolutely no liability arising out of any vulnerability or security breach, including but not limited to any unauthorized access to or use of a Renesas Electronics product or a system that uses a Renesas Electronics product. RENESAS ELECTRONICS DOES NOT WARRANT OR GUARANTEE THAT RENESAS

ELECTRONICS PRODUCTS, OR ANY SYSTEMS CREATED USING RENESAS ELECTRONICS PRODUCTS WILL BE INVULNERABLE OR FREE FROM CORRUPTION, ATTACK, VIRUSES, INTERFERENCE, HACKING, DATA LOSS OR THEFT, OR OTHER SECURITY INTRUSION ("Vulnerability Issues"). RENESAS ELECTRONICS DISCLAIMS ANY AND ALL RESPONSIBILITY OR LIABILITY ARISING FROM OR RELATED TO ANY VULNERABILITY ISSUES. FURTHERMORE, TO THE EXTENT PERMITTED BY APPLICABLE LAW, RENESAS ELECTRONICS DISCLAIMS ANY AND ALL WARRANTIES, EXPRESS OR IMPLIED, WITH RESPECT TO THIS DOCUMENT AND ANY RELATED OR ACCOMPANYING SOFTWARE OR HARDWARE, INCLUDING BUT NOT LIMITED TO THE IMPLIED WARRANTIES OF MERCHANTABILITY, OR FITNESS FOR A PARTICULAR PURPOSE.

8. When using Renesas Electronics products, refer to the latest product information (data sheets, user's manuals, application notes, "General Notes for Handling and Using Semiconductor Devices" in the reliability handbook, etc.), and ensure that usage conditions are within the ranges specified by Renesas Electronics with respect to maximum ratings, operating power supply voltage range, heat dissipation characteristics, installation, etc. Renesas Electronics disclaims any and all liability for any malfunctions, failure or accident arising out of the use of Renesas Electronics products outside of such specified ranges.
9. Although Renesas Electronics endeavors to improve the quality and reliability of Renesas Electronics products, semiconductor products have specific characteristics, such as the occurrence of failure at a certain rate and malfunctions under certain use conditions. Unless designated as a high reliability product or a product for harsh environments in a Renesas Electronics data sheet or other Renesas Electronics document, Renesas Electronics products are not subject to radiation resistance design. You are responsible for implementing safety measures to guard against the possibility of bodily injury, injury or damage caused by fire, and/or danger to the public in the event of a failure or malfunction of Renesas Electronics products, such as safety design for hardware and software, including but not limited to redundancy, fire control and malfunction prevention, appropriate treatment for aging degradation or any other appropriate measures. Because the evaluation of microcomputer software alone is very difficult and impractical, you are responsible for evaluating the safety of the final products or systems manufactured by you.
10. Please contact a Renesas Electronics sales office for details as to environmental matters such as the environmental compatibility of each Renesas Electronics product. You are responsible for carefully and sufficiently investigating applicable laws and regulations that regulate the inclusion or use of controlled substances, including without limitation, the EU RoHS Directive, and using Renesas Electronics products in compliance with all these applicable laws and regulations. Renesas Electronics disclaims any and all liability for damages or losses occurring as a result of your noncompliance with applicable laws and regulations.
11. Renesas Electronics products and technologies shall not be used for or incorporated into any products or systems whose manufacture, use, or sale is prohibited under any applicable domestic or foreign laws or regulations. You shall comply with any applicable export control laws and regulations promulgated and administered by the governments of any countries asserting jurisdiction over the parties or transactions.
12. It is the responsibility of the buyer or distributor of Renesas Electronics products, or any other party who distributes, disposes of, or otherwise sells or transfers the product to a third party, to notify such third party in advance of the contents and conditions set forth in this document.
13. This document shall not be reprinted, reproduced or duplicated in any form, in whole or in part, without prior written consent of Renesas Electronics.
14. Please contact a Renesas Electronics sales office if you have any questions regarding the information contained in this document or Renesas Electronics products.

(Note1) “Renesas Electronics” as used in this document means Renesas Electronics Corporation and also includes its directly or indirectly controlled subsidiaries.

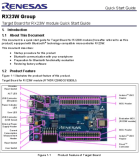
(Note2) “Renesas Electronics product(s)” means any product developed or manufactured by or for Renesas Electronics.

Corporate Headquarters
TOYOSU FORESIA, 3-2-24 Toyosu,
Koto-ku, Tokyo 135-0061, Japan
www.renesas.com

Contact information
For further information on a product, technology, the most up-to-date version of a document, or your nearest sales office, please visit: www.renesas.com/contact/.

Trademarks
Renesas and the Renesas logo are trademarks of Renesas Electronics Corporation. The Bluetooth® word mark and logos are registered trademarks owned by Bluetooth SIG, Inc. and any use of such marks by Renesas Electronics Corporation is under license. All trademarks and registered trademarks are the property of their respective owners.

Documents / Resources

	<p>RENESAS RX23W Bluetooth 5.0 Low Energy Module [pdf] User Guide RX23W, Bluetooth 5.0 Low Energy Module, RX23W Bluetooth 5.0 Low Energy Module, Low Energy Module</p>
--	--