



RENAULT R-LINK 2 Navigation System Installation Guide

[Home](#) » [RENAULT](#) » RENAULT R-LINK 2 Navigation System Installation Guide 

Contents

- [1 RENAULT R-LINK 2 Navigation System](#)
- [2 Instructions](#)
- [3 FINAL CHECK](#)
- [4 Documents / Resources](#)
- [5 Related Posts](#)

RENAULT

RENAULT R-LINK 2 Navigation System

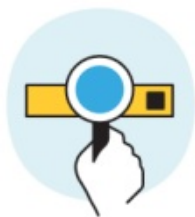


Instructions

This upgrade is only compatible with Renault vehicles equipped with R-Link 2 multimedia systems where the VIN number has been verified on the multimedia website. Use the software only on this given Renault. Do not install it on another car.

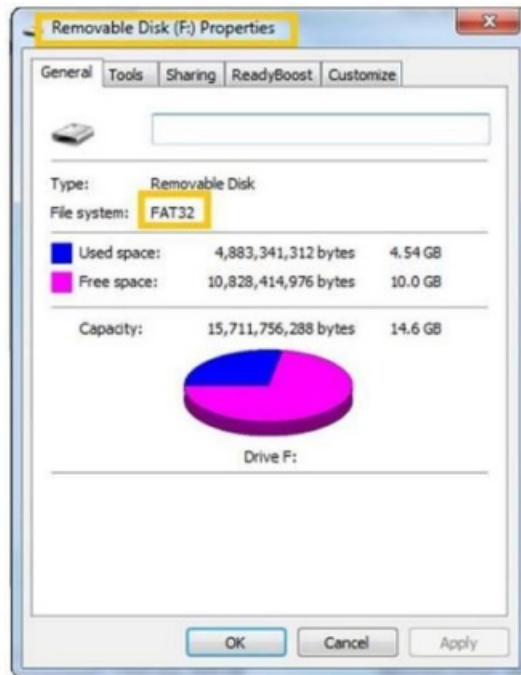
How to perform the upgrade?

1. Check if there are any updates for your vehicle
2. Download this update on a USB stick
3. Plug this USB stick into your connected system



Before you start: Find a USB drive in FAT32 format (8Gb – 32Gb)

- Access your USB drive Properties to check if it is in FAT32 format (e.g.: right-click on PC / Properties).
- Your USB drive must be empty. If not, please clear your USB drive.



Before you start: Download an unzipping software

- To unzip the download file, we recommend that you use 7-Zip (you can download it here: <http://7zip.org/>).
- Make sure that your internet connection is active during the whole process.
- Please do not interrupt the download in progress.

STEP 1: Download the software upgrade



KANGOO II

Version SWL_11.344.3064886_MFD2.3-SG6.1b

Available since : **17/02/2021**

File Size : **479.42 MB**

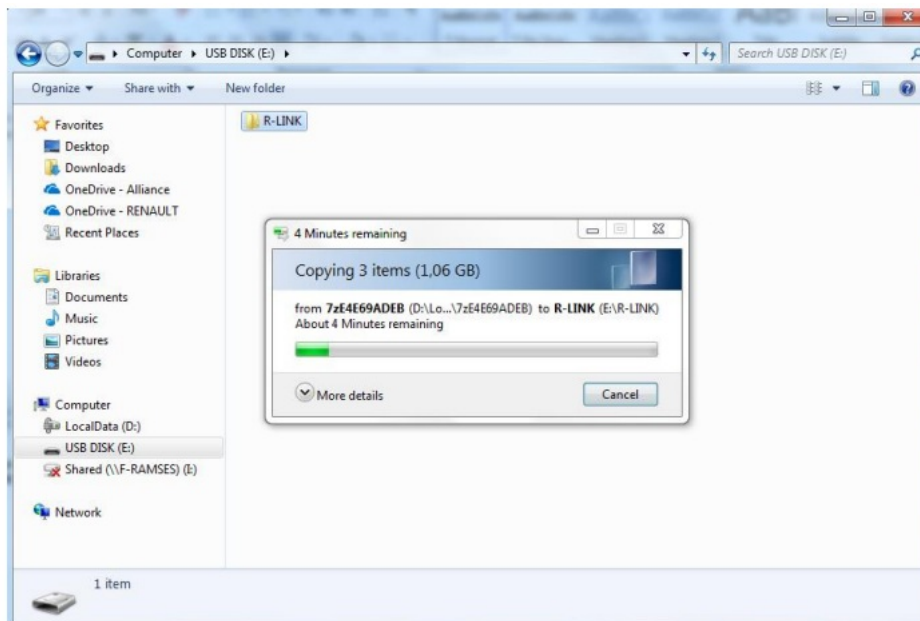
DOWNLOAD NOW

→ Installation guide

Example screen. The version number is indicated at the time of download.

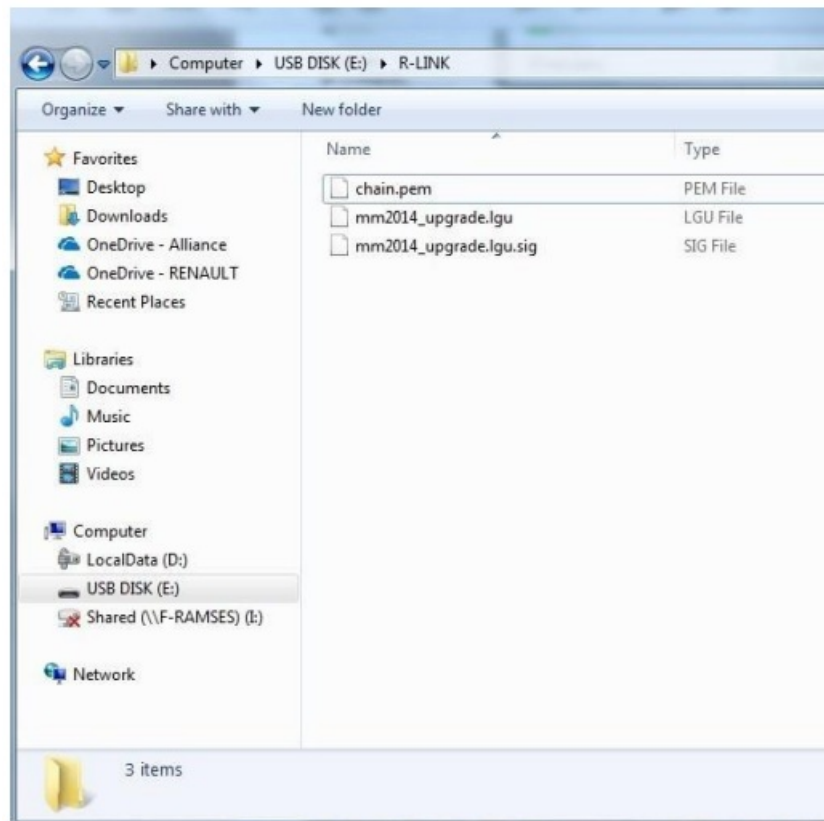
STEP 2: Unzip the folder

Unzip the folder with 7-Zip using the “Extract” command. Copy and paste the R-LINK folder at the root of the USB drive. Do not modify the R-LINK folder. Do not rename it. Do not move it in another location.



STEP 3: Copy the file on the your USB drive

The folder may contain several files. You can open the R-LINK folder only to check if the software has been properly copied.



STEP 4: Install the upgrade on your R-LINK 2

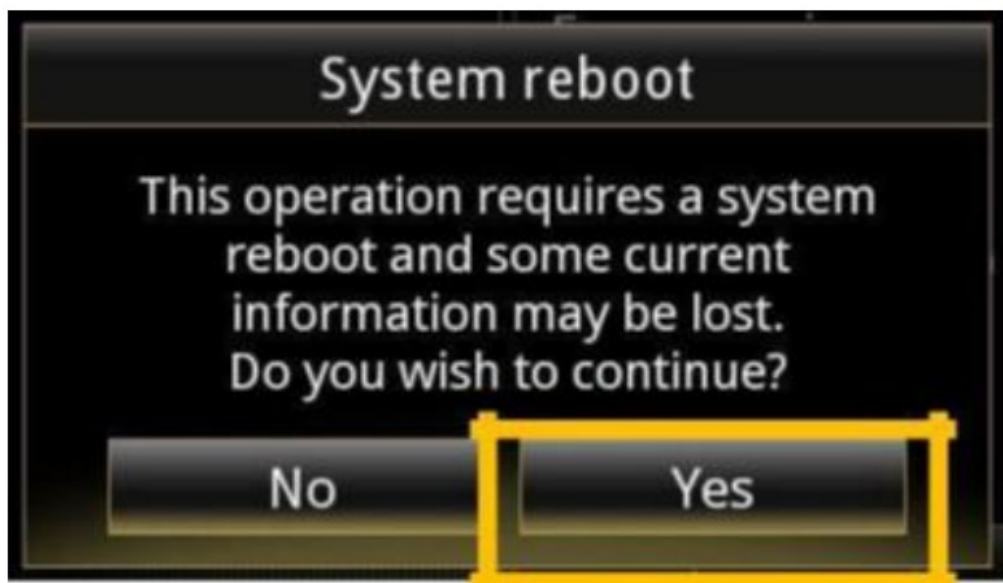
- Start the engine and your R-LINK 2 multimedia system..
- Plug in your USB drive. Your R-LINK 2 should automatically detect the upgrade on your USB drive (wait 3 minutes).
- Do not turn off the engine during the installation. The installation can take up to 20 minutes.



- R-LINK 2 will automatically check the file integrity. Then, the following screens are displayed.
- Click “Yes” on all these screens for the installation process to start.



- The screen will be black for a few minutes during the installation process. Your parking camera and aid will also be unavailable.
- The R-LINK 2 system may restart several times during the process. Do not unplug the USB.
- Lastly, a message on the R-LINK 2 system will confirm that the installation is complete.



- You can now remove the USB.



Note: Please note that the installation of the new R-LINK 2 software will reset your navigation favorites and navigation history.

FINAL CHECK

You can double check if the software upgrade was successful by clicking on Menu -> System -> System information. Example screen. The version number is indicated at the time of download. Do not forget to check if the connectivity of your R-LINK 2 system is activated for Live Info Traffic.



Go to the main menu on your R-LINK 2. If the "Connect" button is displayed (see example below), this means that the SIM card in your R-LINK 2 is not activated. Follow the instructions below to do so.



Click on the "Connect" button.

Accept data sharing to enable on-board connectivity (fill in your email address – optional). The activation may take up to 72 hours.

Step 2: Activiating Connectivity

This activation comes free of charge with no obligations.

To receive legal terms and conditions, please enter your e-mail:


☐ I accept general terms and conditions of sale. Do you want to activate connectivity now?

No

Detail

Yes

Documents / Resources

	<p>RENAULT R-LINK 2 Navigation System [pdf] Installation Guide</p> <p>R-LINK 2, Navigation System, R-LINK 2 Navigation System</p>
------------------------------------------------------------------------------------	---------------------------------------------------------------------------------------------------------------------------------------------------

[Manuals+](#).