



Remote Tech RT-CY686 Remote Key User Manual

[Home](#) » [Remote Tech](#) » Remote Tech RT-CY686 Remote Key User Manual 

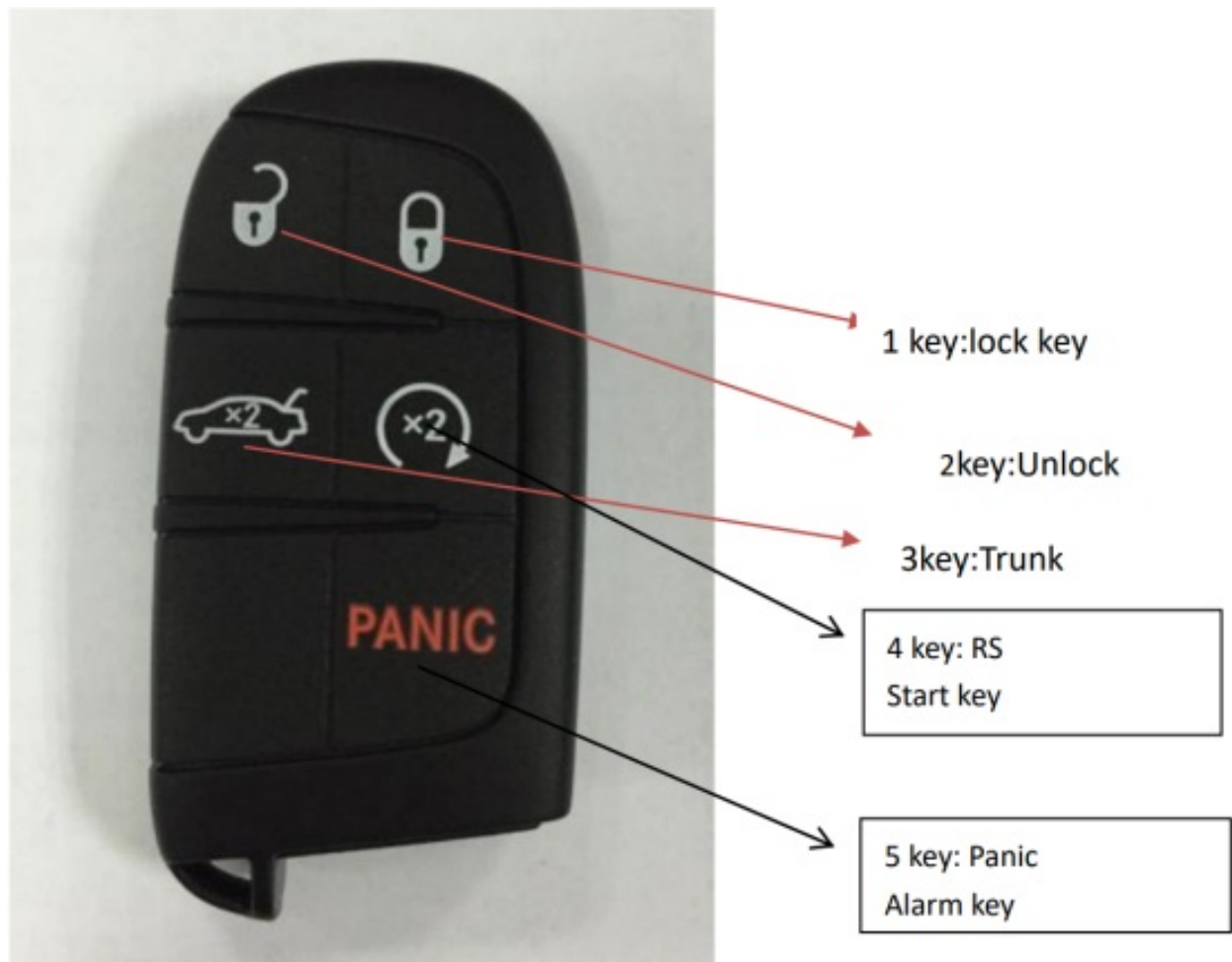


Company: Remote Tech LLC

Address: 310 ALDER RD,Dover,DE 19904,USA

Name: Remote Key

Model: RT-CY687, RT-CY686, RT-CYRC3, RT-CYRC4



Contents

- [1 Operation instructions](#)
- [2 Documents / Resources](#)
- [3 Related Posts](#)

Operation instructions

1. After matching the key to the car, press 1 the unlock key for 2 seconds to open the door and press 2 the lock key for 2 seconds to close the door.
2. The ignition key is used to manually unlock and start the car.

Product parameters

Rated voltage	DC 3V
Working current	<12mA
Operating voltage	DC 3.3V-2.2V
Transmit power	>-8dbm
Key operation force	200±50g
Operating temperature	-5°C +45°C
Stand-by current	7uA
transmitting frequency	433.92MHZ±75KHZ
Modulation	ASK
Battery	CR2032
Key durability	More than 70,000 times

This device complies with Part 15 of the FCC Rules. Operation is subject to the following two conditions: (1) this device may not cause harmful interference, and (2) this device must accept any interference received, including interference that may cause undesired operation.

Changes or modifications not expressly approved by the party responsible for compliance could void the user's authority to operate the equipment.

NOTE: This equipment has been tested and found to comply with the limits for a Class B digital device, pursuant to Part 15 of the FCC Rules. These limits are designed to provide reasonable protection against harmful interference in a residential installation. This equipment generates uses instructions, that may cause harmful interference to radio communications. However, there is no guarantee that interference will not occur in a particular installation. If this equipment does cause harmful interference to radio or television reception, which can be determined by turning the equipment off and on, the user is encouraged to try to correct the interference by one or more of the following measures:

- Reorient or relocate the receiving antenna.
- Increase the separation between the equipment and receiver.
- Connect the equipment into an outlet on a circuit different from that to which the receiver is connected.
- Consult the dealer or an experienced radio/TV technician for help.

Radiation Exposure Statement

The device has been evaluated to meet general RF exposure requirements.

The device can be used in portable exposure condition without restriction.

This device contains license-exempt transmitter(s)/receiver(s) that comply with Innovation, Science, and Economic Development Canada's license-exempt RSS(s). Operation is subject to the following two conditions:

- (1) This device may not cause interference.
- (2) This device must accept any interference, including interference that may cause undesired operation of the device.

This device complies with ISED RF radiation exposure limits set forth for an uncontrolled environment.

The device can be used in portable exposure condition without restriction.

Documents / Resources



[Remote Tech RT-CY686 Remote Key](#) [pdf] User Manual
CYV14, 2AOKM-CYV14, 2AOKMCYV14, RT-CY687, RT-CY686, RT-CYRC3, RT-CYRC4, RT-CY686 Remote Key, RT-CY686 Remote Key