



REMOCK RLN1 RL Net Mobile Connection User Guide

[Home](#) » [remock](#) » REMOCK RLN1 RL Net Mobile Connection User Guide 

REMOCK RLN1 RL Net Mobile Connection User Guide



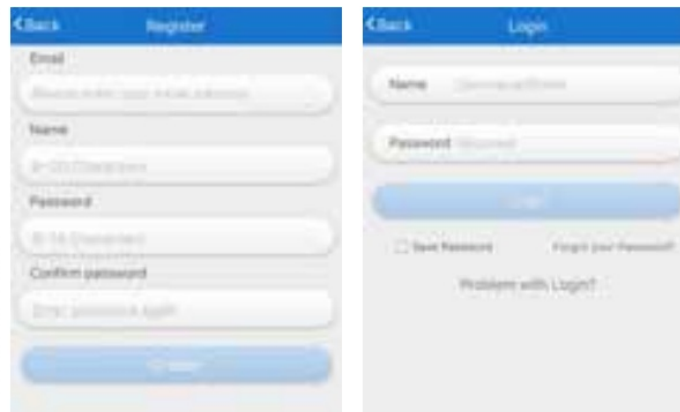
Contents

- [1 INSTALLATION](#)
- [2 Register](#)
- [3 Synchronization](#)
- [4 Linking](#)
- [5 Abridge cerrar auto Auto open](#)
- [6 Authorizations](#)
- [7 Notification](#)
- [8 Troubleshooting](#)
- [9 Limited Warranty Statement](#)
- [10 Documents / Resources](#)
 - [10.1 References](#)
- [11 Related Posts](#)

INSTALLATION

- In the mobile connection kit, connect the Ethernet port to one of the LAN ports of the router that is connected to the Internet. Connect power to the grid. When the device is ready, the two red lights will remain fixed. The distance between the device and the lock can not be greater than 10 meters, although its operation at greater or lesser distances is subject to conditions of the installation.

Register



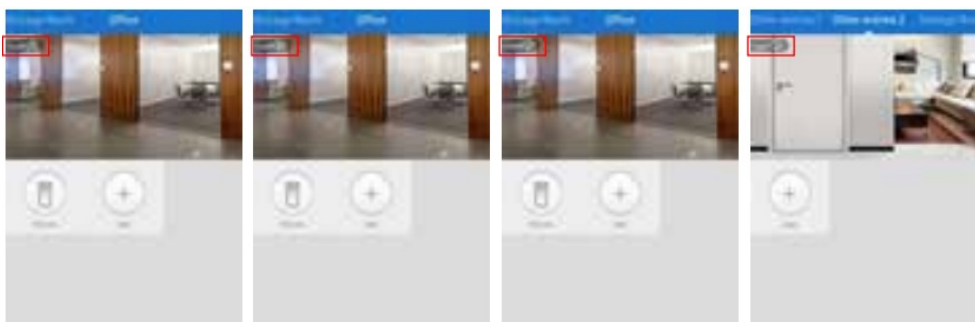
- Compatibilidad • Compatibility • Compatibilité:
Android 4.3 o superior
iOS 7.0 o superior

- Download the app using the QR code located in the product box. Register a new account if it is the first time you access RL Net. If you already have an account, please log in.

Synchronization



- Select in the upper menu the space in which you want to locate the lock. Press “+” to add the lock you want to control. Select the model of your lock. Accept the permissions of the app to access the camera and scan the QR code located at the bottom of the mobile connection device. Personalize the name of the lock.
- The lock that has been added will appear in the space that was previously selected. When there is a lock linked to the space and the mobile phone has a connection, it will be indicated in the upper left corner as: “local” (connected via wifi) or “cloud” (connected to mobile network). If there is no connection, “offline” appears. If no lock has been reconfiguration space, “nogw” will appear.

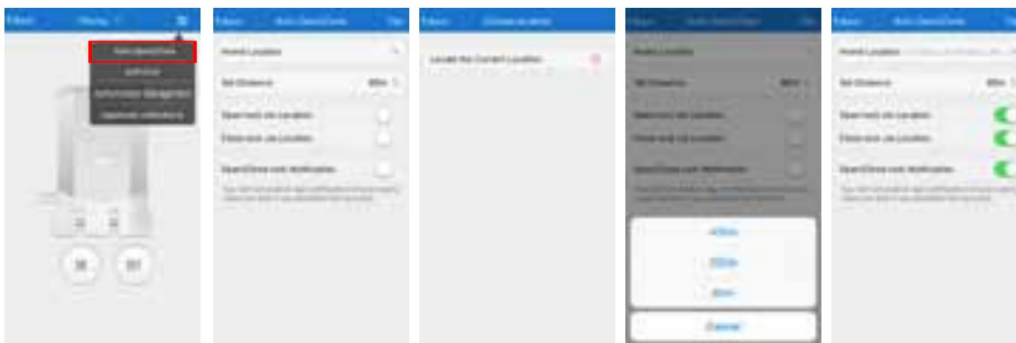


Linking

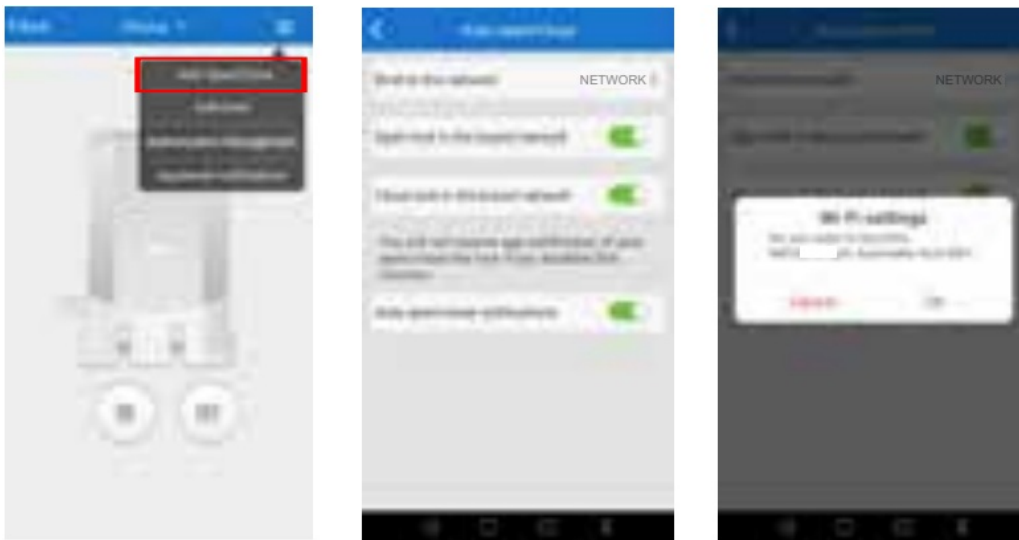


- The lock cannot yet be controlled from the mobile phone until this step is completed. The app is considered an additional remote control, and therefore it will have to be configured as such following the instructions on page 13 of the lock user guide. To add the app as a remote control more, you must access the lock set in space chosen. During the linking process, you have to link back all the remote controls and the app by pressing either ON / OFF button. When this is set correctly, it can be operated and the button used will be marked in red: ON – Open/ OFF – Close.

Configure auto Open



Automatically open/close (by location, iOS version). The configuration of this functionality has to be performed from where the lock is installed. In the drop-down menu in the upper right corner, select the first option. In the next window, configure the location by automatic detection. Then select the distance from which the automatic operations will be performed. Select whether the lock is to be opened and/or closed automatically, and whether or not to receive notifications in the app for each automatic operation.



- **Automatically open / close (by Wifi, Android version).** The configuration of this functionality has to be performed from where the lock is installed. In the drop-down menu in the upper right 'cone', select the interruption. In the next window, configure the networking to which the mobile will connect to apply this functionality and confirm the operation. Select whether the lock is to be opened and or closed automatically, and whether or not to receive notifications in the app for each automatic operation.

Authorizations



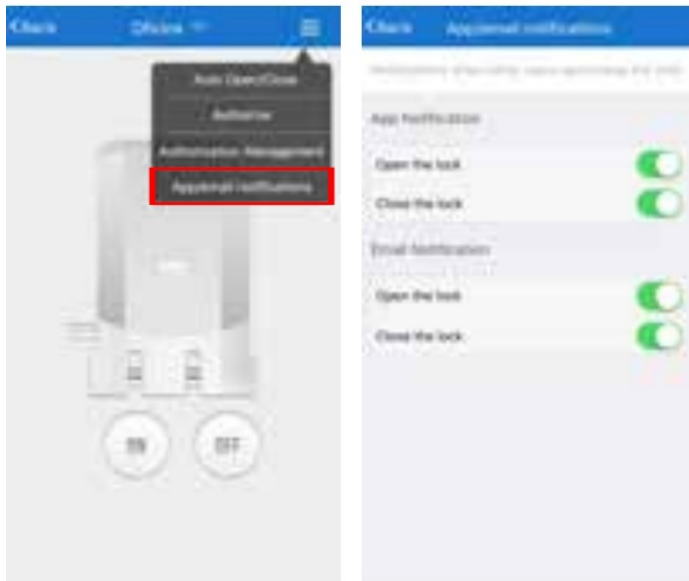
- **Authorization for another user temporarily.** In the drop-down menu in the upper right corner, select the second option. In the window that appears, select dates and times of start and end of authorization. Return to the initial window, enter the access password to the app and give ok on the keyboard. In the next window, enter a six-figure code with which the authorized user can operate. In the last window, press "Copy" and the link will be saved in the clipboard to be shared with the authorized user, who will open it in the browser, enter the authorization password and can operate the lock according to the last picture.



- **Manage authorizations.** In the drop-down menu in the upper right corner, select the third option. In the following window you can manage the valid authorizations (copy link and delete them) and expired ones (delete them). If you need to extend the validity period, you must create a new authorization. Please note that when you delete

an authorization, you will not be able to recover.

Notification



- Notifications when another user operates the same lock. In the drop-down menu in the upper right corner, select the fourth option. In the following window you can manage notifications that you want to receive in the app and / or email when another user of the same lock performs opening and / or closing operations.

In the bottom menu select Settings in the Settings window. there are lepton

- **'Account':** you can change or save the password or log out.
- **Synchronization:** to synchronize data uploading to the cloud or downloading to local device manually. It synchronizes automatically to the cloud by default when you close and re-enter the app.
- **Equipment management:** all linked devices are shown in each space, and the corresponding mobile connection is shown.
- **Configuring spaces:** you can add or delete spaces, or change the photo assigned to each space by a custom one.
- **About:** description of the app preinstalled

Troubleshooting

- Check before contacting Technical Service

Problem

- The app is offline and does not operate the lock.

Solution

Check your internet connection. If the problem has not been resolved, close the app and re-enter it. If the problem has not been resolved, make sure your phone is compatible. If the problem is not resolved, contact our

Limited Warranty Statement

This Limited Warranty shall apply to the product Remock Lockey Net, consisting of the mobile connection kit for the Invisible Security Locks Remock Lockey and Remock Lockey Pro, ("The Product") Grupo Gescas. S.L. warrants that the Product at the date of original purchase is free from defects in materials and workmanship ("Limited Warranty"). The Warranty will be revoked if damage occurs to the unit as a result of ignoring the instructions in this manual. This warranty does not affect the legal rights of consumers and users, which are independent and compatible with the Limited Warranty. The Limited Warranty is subject to the following terms and conditions. This Limited Warranty is given only to the original purchaser of the Product ("Customer"). However, this Limited Warranty may be transferred to any person to whom the product is sold by the original purchaser. This Limited Warranty shall last two (2) years from the date of original purchase ("Warranty Period"). For those consumers protected by the rules on consumer and user applicable in their country of purchase respective or, if this is different in their country of residence, the benefits provided in this Limited Warranty are in addition to the rights and actions recognized by the aforementioned rules on consumers and users and in no way contrary to them, including without limitation. The duration of this Limited Warranty may be increased by Grupo Gescasi, S.L. according to specific promotions that will be announced in www.emocklockey.com. The customer must provide the original purchase receipt or invoice and the serial number in order to make use of this Limited Warranty. This Limited Warranty is only valid and enforceable in the country in which the Product is sold by Grupo Gescasi, S.L. directly or indirectly. Before using the product, verify that there are not damaged or defective parts. Check that any other conditions that may affect operation. Do not use the product if any part is damaged or defective. Throughout all the Warranty Period, Grupo Gescasi S.L., in its sole discretion, will repair or replace the defective Product without charge, accordance with the provisions in this Limited Warranty. Repair or replacement may involve the use of functionally equivalent reconditioned unit. Grupo Gescasi S.L. or the Authorized Dealer will return the repaired Product or replaced with another functional equivalent Product to the Customer in good working condition. All replaced faulty parts or components will become the property of Grupo Gescasi S.L. This Limited Warranty applies only to the hardware components of the Product originally supplied and does not apply to any software or other equipment. If Grupo Gescasi, S.L. repairs or replaces the Product, the repaired or replaced Product shall continue to be warranted for the remaining time of the original Warranty Period or for three (3) months from the date of repair or replacement, whichever is longer. This Limited Warranty shall not apply to any defect or damage caused by any of the following reasons: if the Product's serial number has been removed, erased, defaced, altered or is illegible; Product impairment due to normal wear different use than that described in the user manual; tampering; humidity conditions, environmental conditions or extreme thermal conditions or a sudden change in these conditions; contraction and expansion of the materials of the door, frame, walls; outdoor installation, corrosion, oxidation, sulfation of battens; inhibitor frequency, interferences, modifications or unauthorized connections; repair or unauthorized opening of the Product; transportation; repaired with unauthorized spare parts; accidents: forces of nature: blocking of the opening/closing mechanism due to misuse of the manual system indicated only for emergencies, use of the redundant opening system; lost or stolen remote control, remote control battery depletion; lock batteries depletion; improper installation which has had the effect of friction between parts and/or blocking of the lock, burglary or sabotage: the defect was caused by the fact that the Product was used next to or connected to an unauthorized accessories not supplied by Grupo Gescasi S.L. or use of the product outside the permitted or intended uses for which it is intended, and in cases where it can be demonstrated that the defect is not the fault of the product itself; or other circumstances beyond the control of Grupo Gescasi, S.L. The Limited Warranty excludes physical damage to the product surface, including among other things cracks or scratches on the housing, defects caused by the fact that the Product has been connected shorted. This Limited Warranty will have no effect on elements other than the Product, such as: door, frame, hardware, main lock and/or other locks, walls, hiring the services of a locksmith, carpentry or other qualified professional to perform an opening. In case of a claim within the Warranty Period, you shall inform the Technical Service alleged defect, within the reasonable period in which this effect has been advised, and in no event later than the end of the warranty period. In case of failure of the Product, the Customer must take the following steps: a) Consult this user guide to identify and to correct the problem, b) If after consulting this user guide, the problem remains unresolved, you should contact the distributor where you purchased the product or write to tecnico@grupogescasi.com. c) Before you contact the Technical Support, make sure you have the following information available: Product serial number, full address and contact information and proof of purchase. Once we accept the processing of Warranty and assign you an RMA number, the Product under the incidence will be sent by the Customer or Dealer, together with all the remote controls purchased, free of charges (shipping costs paid at origin), to the address indicated timely. Return freight of the


repaired or replaced unit will be paid by Grupo Gescasi, S.L. whether the action was subject to the terms of warranty. Otherwise, it will be returned to Customer or Dealer with freight payable on arrival. This warranty does not cover the risks associated with transportation of the product in any of the journeys. Grupo Gescasi, SL is not obligated to repair or replace products that are not accompanied by valid proof of purchase. Grupo Gescasi, S.L. shall not responsible for any customs fees, taxes, or VAT that may be due. The user shall follow the installation and operation instructions. For several reasons including but not limited to, changes in environmental conditions, electronic disruptions and tampering, the Product may not perform as expected. It warns the user to take all necessary precautions for his safety and property protection. Nothing in these conditions excludes or limits the liability of Grupo Gescasi, S.L for death or personal injury caused by our negligence, fraudulent misrepresentation, any other liability which can not be limited or excluded by applicable law. Subject to the preceding paragraph and to the extent that the law allows, Grupo Gescasi, SL is not msponsible for economic losses or loss of goodwill or reputation or special losses or consequential damages suffered or incurred by you arising out of or in connection with these Terms. The provisions of this paragraph shall not affect your statutory rights as a consumer, nor your right to withdraw the contract. This Limited Warranty may be updated by Grupo Gescasi SL. For more information, please visit the website www.remocklockey.com.

- Mas information
- More information
- Plus misinformation

Grupo Gescasi, S.L. ES-B06608111 ry O t Badajoz (Spain) CASI i+34902 008 455 info@grupogescasi.com
wiwgescaslcom



Documents / Resources

	<p>REMOCK RLN1 RL Net Mobile Connection [pdf] User Guide</p> <p>RLN1 RL Net Mobile Connection, RLN1 RL, Net Mobile Connection, Mobile Connection, Conne ction</p>
-------------------------------------------------------------------------------------	---------------------------------------------------------------------------------------------------------------------------------------------------------------------------------------

References

- [User Manual](#)

Manuals+ Privacy Policy

This website is an independent publication and is neither affiliated with nor endorsed by any of the trademark owners. The "Bluetooth®" word mark and logos are registered trademarks owned by Bluetooth SIG, Inc. The "Wi-Fi®" word mark and logos are registered trademarks owned by the Wi-Fi Alliance. Any use of these marks on this website does not imply any affiliation with or endorsement.