



RELIANCE 03-120 Rotary F N R Switch with Backlit LED Instruction Manual

[Home](#) » [RELIANCE](#) » RELIANCE 03-120 Rotary F N R Switch with Backlit LED Instruction Manual 

RELIANCE 03-120 Rotary F N R Switch with Backlit LED



Contents

- [1 installation instructions](#)
- [2 switch harness connections](#)
- [3 Documents / Resources](#)
- [4 Related Posts](#)

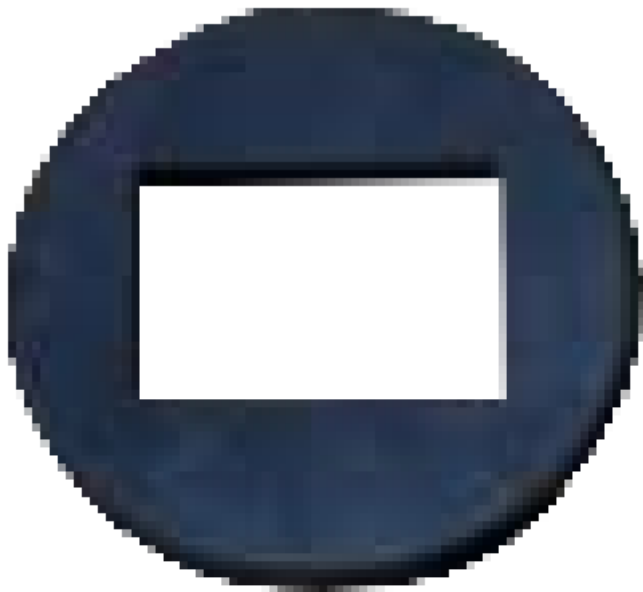
installation instructions

We recommend professional installation. If you choose to not have this product installed by a professional, we highly recommend that you exercise caution, care, and patience when installing this product as it involves cutting the dash and an intricate installation process.

- FNR Switch



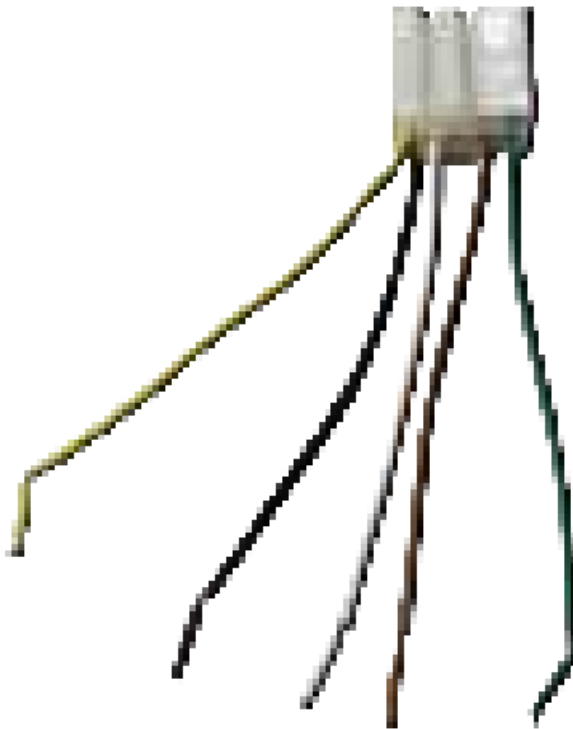
- 2mm Bezel



- 3mm Bezel



- Harness



switch harness connections

Black: 48-36 volt switched positive (+) of cart Keyswitch
Green: 48-36 volt negative (-) Ground of Main battery pack (-)
Brown: 12 volt positive (+) for Backlit LED (from a switched Converter)
White: Forward Wire from cart
Yellow: Reverse Wire from cart

Note: The 03-120 FNR switch is designed to fit multiple cart applications and will work from 48-36 volts (not on GAS). Some carts will need to have the switch relocated to the front dash. Carts with a FNR Shift Handles and Key switch shifters like E-Z-Go RXV instead of rocker style switches are not compatible with this shifter. Also take into consideration the Yamaha Drive & Drive2 FNR switches are mounted horizontally, while the 03-120 uses a vertical mounting hole.

Switch the key to OFF, engage the Parking Brake, and place cart into TOW mode.

Remove the factory FNR switch and take note of the wire colors and the corresponding posts they go to.

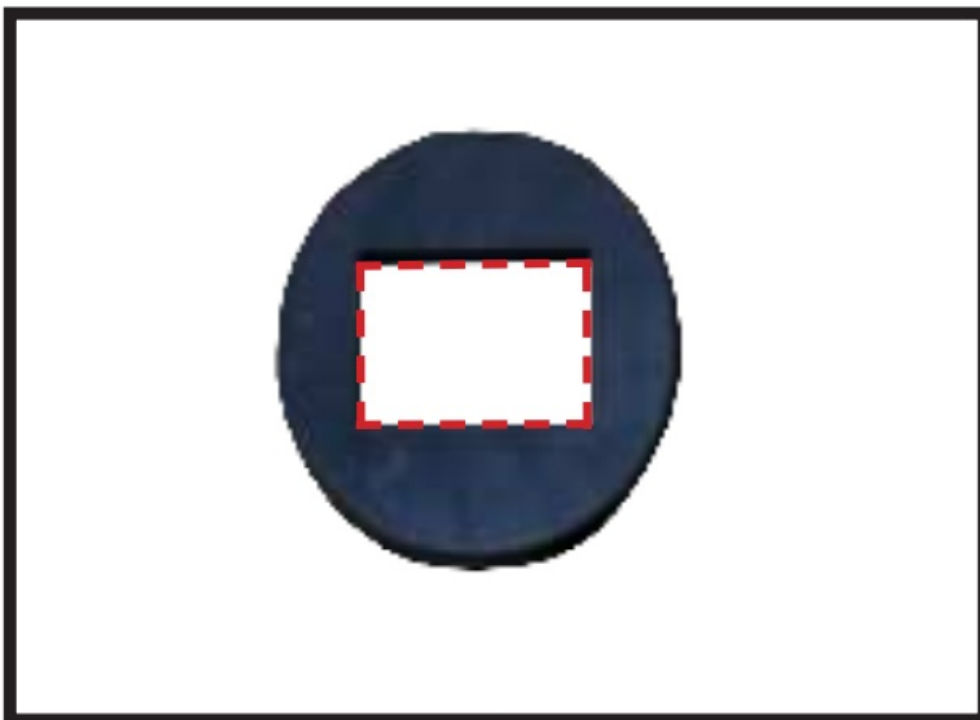
Note: Use a multimeter to determine your Forward and Reverse wires. Also, some aftermarket wire harness colors may be different than OEM.



If not installing into a factory FNR hole, use either of the Rubber Bezel's included with your kit as a template to trace out your mounting hole.

Use a rotary cutting tool and cut out new hole, clean rough edges with sandpaper.

Tip: The Bezel is same size as switch face, use it to ensure the Rotary Switch mounting area will be large enough to not impede any other dash components.



There are two Rubber Bezel's included with this kit for multiple mounting applications (2 mm & 3mm thick).

Choose the Bezel that best fits with your dash thickness and insert the FNR with bezel into dash until the mounting tabs engage with the backside of dash.




Connect wires from Rotary Switch harness to the cart using connection guide at bottom of page 1.



RELIANCE
POWER PARTS

Documents / Resources

	<p>RELIANCE 03-120 Rotary F N R Switch with Backlit LED [pdf] Instruction Manual</p> <p>03-120 Rotary F N R Switch with Backlit LED, 03-120, Rotary F N R Switch with Backlit LED, Switch with Backlit LED, Backlit LED, LED</p>
---	---