



REHAU Nea Smart 2.0 R-Module 24 V Instruction Manual

[Home](#) » [REHAU](#) » REHAU Nea Smart 2.0 R-Module 24 V Instruction Manual

Contents [[hide](#)]

- [1 REHAU Nea Smart 2.0 R-Module 24 V](#)
- [2 Safety Instructions and Product Conformity](#)
- [3 System Overview](#)
- [4 Wall Installation](#)
- [5 Diagrams](#)
 - [5.1 Electrical terminations](#)
- [6 Additional information](#)
- [7 Documents / Resources](#)
 - [7.1 References](#)
- [8 Related Posts](#)



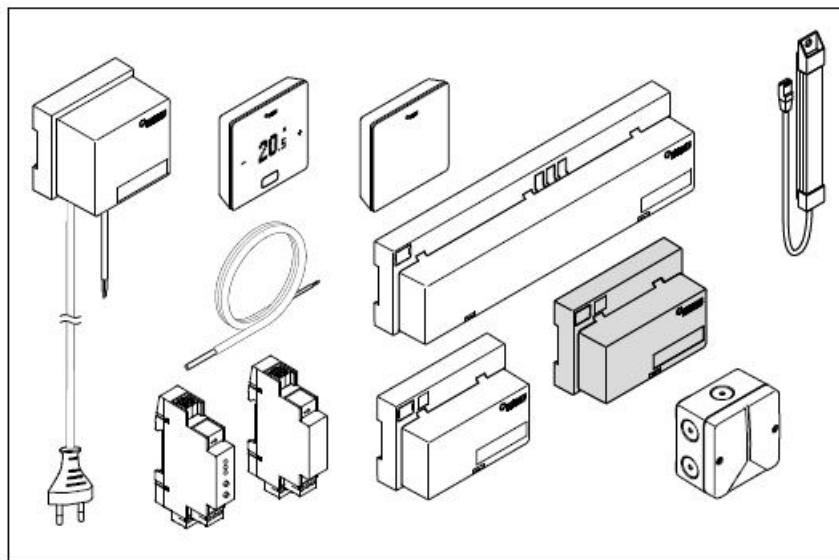
REHAU Nea Smart 2.0 R-Module 24 V



Safety Instructions and Product Conformity

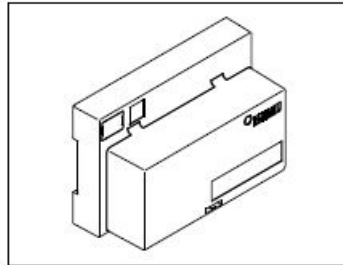
Risk of life through electrical shock! The electrical installation must follow the applicable national standards and guidelines as well as any specific requirements of your local energy supplier. These instructions are intended for use by a qualified person who is holding an official certificate in one of the following professions: electrician or electronics engineer. Always read the instructions prior to commencing the installation. Connection to the final power supply must only be carried out after the installation is complete. Hereby, REHAU Industries SE & Co. KG declares that the radio equipment type Nea Smart 2.0 is in compliance with Directive 2014/53/EU. The full text of the EU declaration of conformity is available at the following internet address: www.rehau.com/neasmart2

System Overview

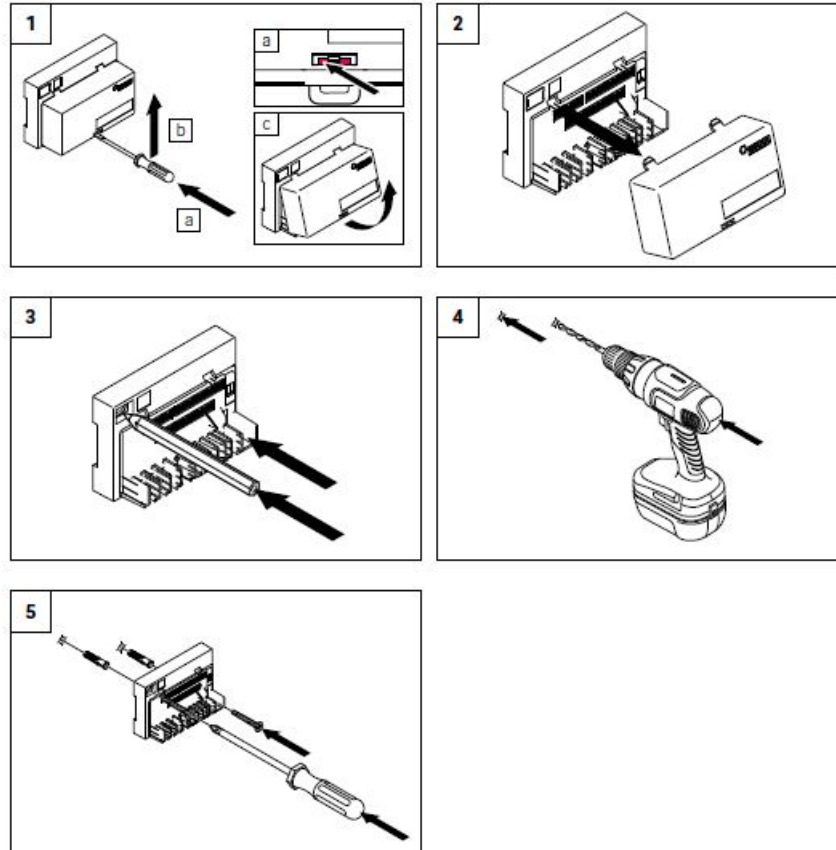


Scope of Delivery

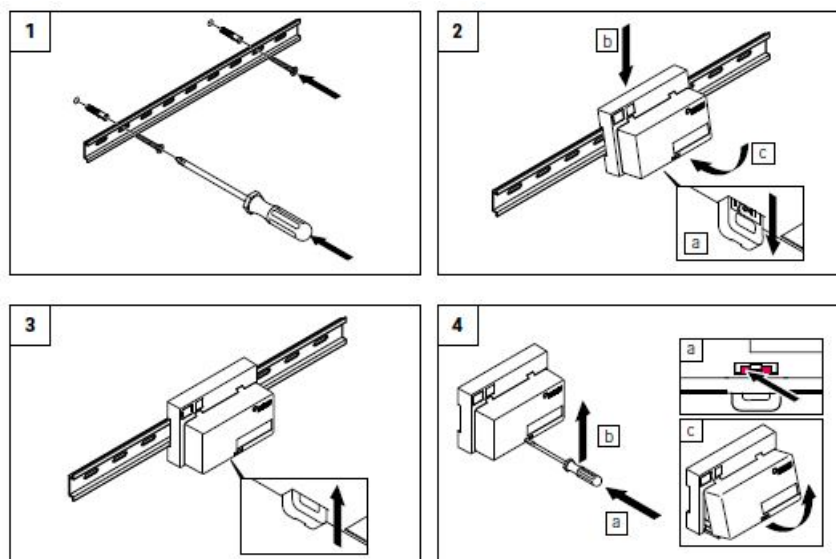
1x



Wall Installation



DIN Rail Installation



Electrical voltage! Danger to life!

- Prior to opening always disconnect from the mains and secure all components of the system in such a way that they cannot accidentally be switched on.
- Disconnect external voltages at the relay contacts and secure against unintended activation.
- Check for absence of voltage!

Transformer

REHAU

230 V AC

24 V AC

R-Module

max. 1 R-Module per Base

from Base

ZOBUS1 ZOBUS2 DI1 RZ9 RZ10 RZ11 RZ12 L1 L2

RELAY1 RELAY2 1/2 1/2 1/2 1/2

max. 8 actuators in total

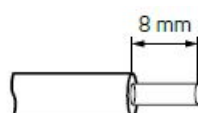
The diagram illustrates the electrical connections between three main components: the Transformer, the Base, and the R-Module.

- Transformer:** A 230 V AC power source connected to the Base.
- Base:** The central unit with multiple terminal blocks. It receives 24 V AC from the Transformer and provides power to the R-Module.
- R-Module:** Contains relays and terminal blocks. It is powered by the Base and has its own set of output terminals.

Key connections shown include:

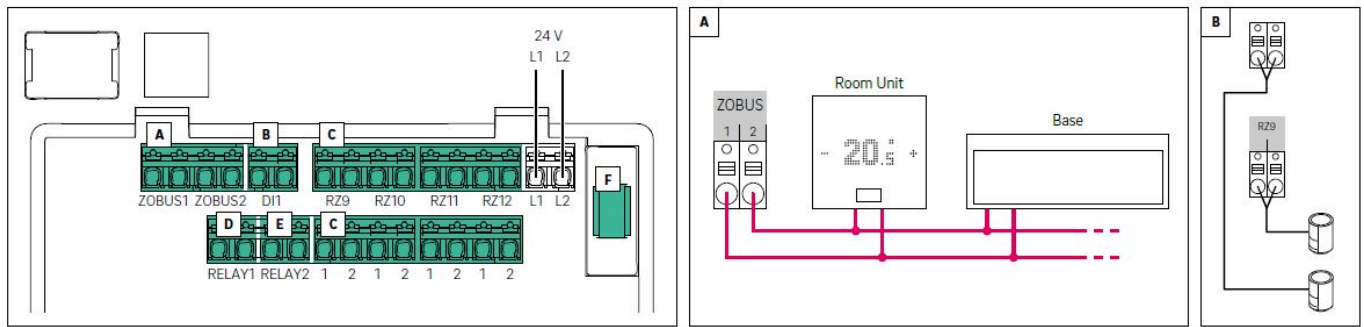
- 230 V AC input to the Transformer.
- 24 V AC output from the Transformer to the Base.
- Power lines connecting the Base to the R-Module.
- Signal or control lines (indicated by red lines) connecting the Base to the R-Module.

0,5-1,5 mm²



Multiple stranded cable

1,0-1,5 mm²



Freely configurable

- **A.** Zone Bus
- **B.** Digital Input 1
- **C.** Zone 9-12
- **D.** Relay 1
5 A, Class 2
- **E.** Relay 2
5 A, Class 2
- **F.** Fuse T2A

Additional information

This document is protected by copyright. All rights based on this are reserved. No part of this publication may be translated, reproduced or transmitted in any form or by any similar means, electronic or mechanical, photocopying, recording or otherwise, or stored in a data retrieval system.

Our verbal and written advice with regard to usage is based on years of experience and standardised assumptions and is provided to the best of our knowledge. The intended use of REHAU products is described comprehensively in the technical product information. The latest version can be viewed at www.rehau.com/TI. We have no control over the application, use or processing of the products. Responsibility for these activities therefore remains entirely with the respective user/processor.

Where claims for liability nonetheless arise, they shall be governed exclusively according to our terms and conditions, available at www.rehau.com/conditions, insofar as nothing else has been agreed upon with REHAU in writing. This shall also apply for all warranty claims, with the warranty applying to the consistent quality of our products in accordance with our specifications. Subject to technical changes.

954634 03.2022 © REHAU Industries SE & Co. KG, Rheniumhaus, 95111 Rehau

Documents / Resources



[REHAU Nea Smart 2.0 R-Module 24 V](#) [pdf] Instruction Manual
Nea Smart 2.0 R-Module 24 V, Smart 2.0 R-Module 24 V, 2.0 R-Module 24 V, R-Module 24 V

References

- [REHAU](#) **Conditions of Sale worldwide** | [REHAU](#)
- [REHAU TI Portal - Find specific technical information](#)
- [REHAU North America](#)
- [REHAU Group | Engineering progress – Enhancing lives](#)
- [Conditions of Sale worldwide](#) | [REHAU](#)
- [NEA SMART 2.0 Manager](#) | [REHAU](#)
- [REHAU TI Portal - Find specific technical information](#)
- [Szállítási és Fizetési Feltételek](#)