



REHAU K10 Tool Kit Instruction Manual

[Home](#) » [REHAU](#) » REHAU K10 Tool Kit Instruction Manual 

Contents

- [1 REHAU K10 Tool Kit](#)
- [2 Product Usage Instructions](#)
- [3 Notes on safety](#)
- [4 Scope of supply](#)
- [5 Assembly procedure](#)
- [6 Guarantee](#)
- [7 Documents / Resources](#)
 - [7.1 References](#)
- [8 Related Posts](#)



REHAU K10 Tool Kit



Product Usage Instructions

Safety Notes

Please read all safety notes before operating the tool. Observe the notes during use and always keep them with the tool. In addition to the operating instructions, generally applicable legal and other binding regulations relating to industrial safety and the prevention of accidents should be observed and the relevant instructions given. The tool is only suitable for the preparation of REHAU products. REHAU does not accept any liability for damage or injuries that are due to unsafe use of the product, inadequate maintenance, or incorrect product and system application. For planning and assembly, please use our valid Technical Information. You can obtain the current version of the document from your dealer or your REHAU Sales Office, or you can download it at www.rehau.uk.

Assembly Procedure

1. Using pipe cutters 25, cut the pipe to the required length at right angles without leaving burrs.
2. Slide the compression sleeve into the tool.
3. Slide the pipe through the compression sleeve into the tool up to the stop.

Attention: Keep your hand at a safe distance from the tool. Do not use saws or similar devices! Inside taper of the compression sleeve must point forwards.

1. Press the lever together (only once) and maintain in position for approximately 5 seconds. This expands the pipe.
2. Bring the tool into the starting position and remove the expanded pipe (open movable lever completely).
3. Insert the fitting into the pipe up to the stop. After a brief period, the fitting will sit tightly in the pipe (memory effect).

4. Attach the tool completely to the joint.

Attention: Press the lever only once together to expand the pipe. See point 5. Before the full memory effect takes place, the fitting may fall out of the pipe! Make sure the fitting is in a straight position.

Bail! Do not tilt! The tool must be applied over the full surface and at right angles.

1. Press the lever together rapidly, avoiding jerky movements, and compress the compression sleeve up to the fitting collar.

Notes on safety

Attention: Please read all safety notes before operating tool.

Observe the notes during use and always keep them with the tool. In addition to the operating instructions, generally applicable legal and other binding regulations relating to industrial safety and the prevention of accidents should be observed and the relevant instructions given.

1. The tool is only suitable for preparation of REHAU compression sleeve joints of the dimension stated on the tool (e.g. 10.1 x 1.1, 12 x 2.0, 14 x 1.5 or 16 x 1.5). Do not use the tool for other purposes or dimensions.
2. Only operate the tool with original REHAU parts and accessories.
3. Only allow repairs and maintenance to be carried out by authorised persons. REHAU will reject any responsibility or liability for work undertaken by unauthorised personnel
4. Only operate the tool using both hands.
5. Keep your workplace tidy and free of obstructions. Make sure there is always sufficient light.
6. Keep unauthorised persons away from your workplace.
7. Wear suitable work clothes. Use goggles.

Attention: REHAU does not accept any liability for damage or injuries that are due to unsafe use of the product, inadequate maintenance or incorrect product and system application. For planning and assembly, please use our valid Technical Information. You can obtain the current version of the document from your dealer or your REHAU Sales Office, or you can download it at www.rehau.uk

Scope of supply

RAUTOOL K10/K12/K14/K16

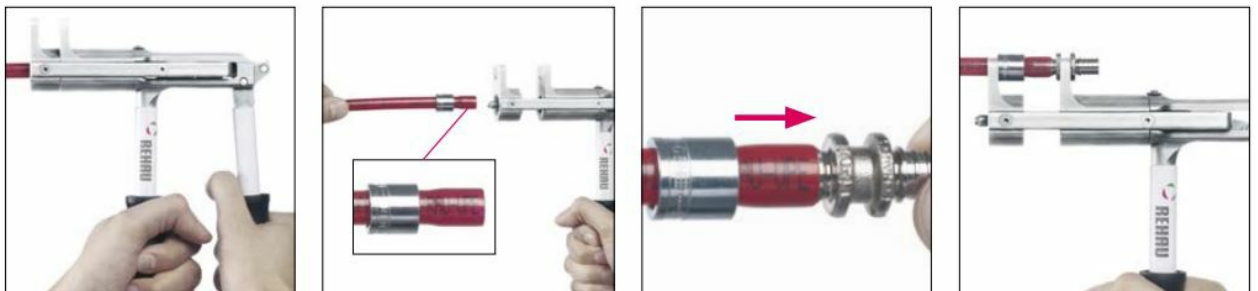


- K10/K12/K14/K16 basic tool
- Pipe cutter 25
- Transport case
- Operating instructions

Assembly procedure



1. Using pipe cutters 25, cut pipe to required length at right angles without leaving burrs.
2. Bring tool into starting position. Open movable lever completely ($\geq 150^\circ$). For K16 90 – 95°.
3. Slide compression sleeve into tool.
4. Slide pipe through the compression sleeve into the tool up to the stop.
 - **Attention:** Keep your hand at a safe distance from the tool. Do not use saws or similar devices!
 - Inside taper of the compression sleeve must point forwards.



5. Press lever together (only once) and maintain in position for approx. 5 seconds. This expands the pipe.
6. Bring tool into starting position and remove expanded pipe. (Open movable lever completely).
7. Insert fitting into pipe up to the stop. After a brief period the fitting will sit tightly in the pipe (memory effect).
8. Attach tool completely to the joint.

9. Press lever together rapidly, avoiding jerky movements and compress compression sleeve up to the fitting collar.

Attention

- Press the lever only once together to expand the pipe. See point 5.
- Before the full memory effect takes place, the fitting may fall out of the pipe! Make sure the fitting is in a straight position.

Caution: Do not tilt! Tool must be applied over full surface and at right angles.

Guarantee

- **Article:**
- **No.:**
- **Serial number:**
- **Date of issue customer:**
- **Stamp/Signature:**

Guarantee period

- 12 months from delivery if used as directed for the applications intended and handled with reasonable care.

For your benefit/safety some tests under load were carried out on your new compression and expanding tool in the factory. It is unavoidable that traces of use result from these tests. They do not however in any way detract from the quality of the tool. The tools have been tested and approved by our quality control department. If despite the careful manufacture and assembly of the tool you still have reason for complaint we kindly ask you to return the tool for repair or exchange together with this guarantee card. Any further claims regardless of their type are not valid.

© REHAU Industries SE & Co. KG Rheniumhaus, 95111 Rehau 850655 DE 08.2022

Technical changes reserved.

Please note the respective technical product information, which can be viewed online at www.rehau.com/ti.

This document is protected by copyright. All rights based on this are reserved. No part of this publication may be translated, reproduced or transmitted in any form or by any similar means, electronic or mechanical, photocopying, recording or otherwise, or stored in a data retrieval system.

www.rehau.com/TI. We have no control over the application, use or processing of the products. Responsibility for these activities therefore remains entirely with the respective user/processor. Where claims for liability nonetheless arise, they shall be governed exclusively according to our terms and conditions, available at www.rehau.com/conditions, insofar as nothing else has been agreed upon with REHAU in writing. This shall also apply for all warranty claims, with the warranty applying to the consistent quality of our products in accordance with our specifications. Subject to technical changes.

Documents / Resources

	<p>REHAU K10 Tool Kit [pdf] Instruction Manual K10, K12, K14, K16, K10 Tool Kit, Tool Kit, Kit</p>
---	--

References

-  [REHAU North America](#)