

Contents [[hide](#)]

- [1 REGIN LineATA LINE USB Gateway](#)
- [2 Specifications](#)
- [3 Product Usage Instructions](#)
- [4 Important Notice before Use](#)
- [5 Installing Procedures and Usage](#)
- [6 Frequently Asked Questions](#)
- [7 Documents / Resources](#)
 - [7.1 References](#)



REGIN LineATA LINE USB Gateway



Specifications

- **Package Contents:** LineATA Setup Wizard CD, user manual, quick guide
- **Compatibility:** Windows 7, 10, 11
- **Connection:** USB port, RJ-11 port
- **Set up Language Options:** Multiple languages available

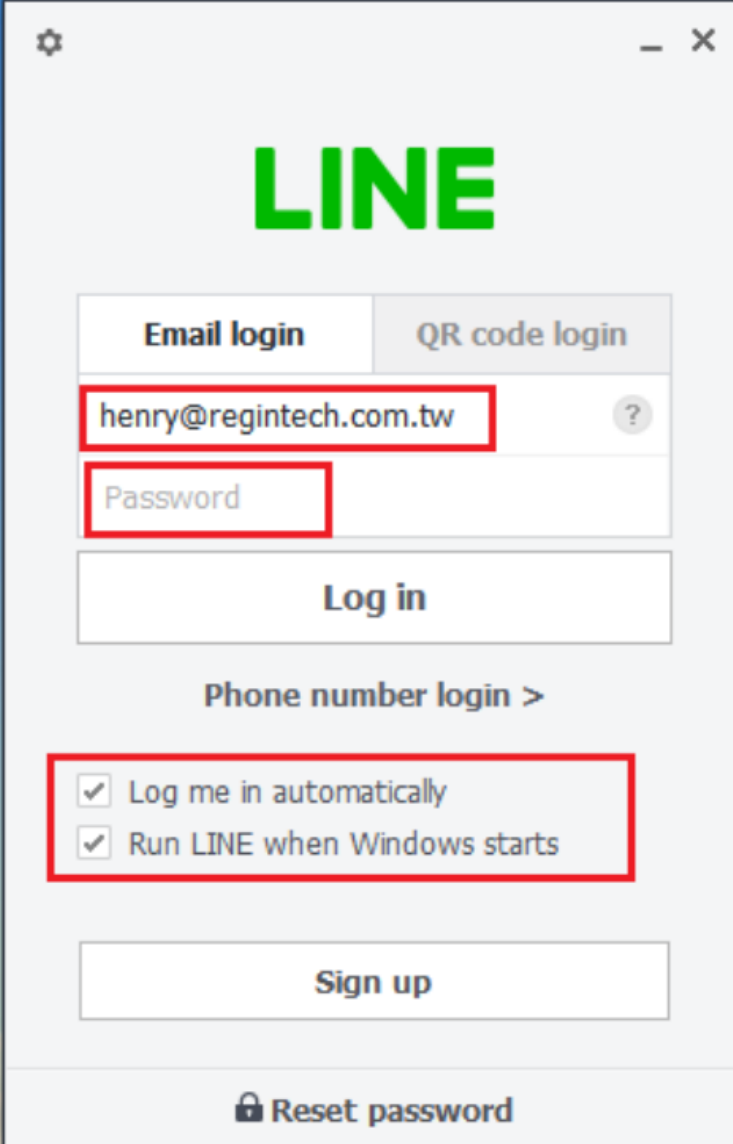
Product Usage Instructions

Package Contents

- LineATA – LINE USB Gateway
- Telephone RJ11 cable
- LineATA Setup Wizard CD with LineATA & LINE setup program, user manual and quick guide. Users can download the latest LineATA-related document from the Regin Technology website: <https://www.regintech.com.tw/download.htm>.
- LineATA introduction YouTube <https://youtu.be/rd5xjo09GWE> You can enable the YouTube caption setting.

Important Notice before Use

1. The LINE@ account is designed for business use with text communication features. For the LINE gateway application, please use the consumer version of the Windows LINE account. Please download PC LINE. Don't download LINE from the Microsoft Store for this application since it is an app version, not a PC Windows version. Since the LINE account is currently linked to the mobile number, you can consider applying for a Chunghwa Telecom prepaid card, which costs only 100 NT dollars for six months, to register a second LINE account. Ensure that your PC has internet access and is running the supported LINE version 9.7.0.3556. It is recommended to set up automatic login for your LINE account via email or mobile phone number, instead of using the mobile phone QR code, as shown in the figure below. If you choose to log in via QR code, you will need to log in again whenever LINE restarts, which can be inconvenient for this application. Automatic login via email or mobile phone number ensures a smoother and more seamless experience.

A screenshot of the LINE login window. At the top is the green 'LINE' logo. Below it are two tabs: 'Email login' and 'QR code login'. The 'Email login' tab is active. Under this tab, there is an email input field containing 'henry@regintech.com.tw' and a password input field with the placeholder 'Password'. Both fields are highlighted with red rectangles. Below the input fields is a 'Log in' button. Underneath the 'Log in' button is a link for 'Phone number login >'. Below that is a section with two checked checkboxes, also highlighted with a red rectangle: 'Log me in automatically' and 'Run LINE when Windows starts'. At the bottom of this section is a 'Sign up' button. At the very bottom of the window is a 'Reset password' link with a lock icon. The window has standard OS window controls (gear, minus, close) in the top right corner.

LINE

Email login QR code login

henry@regintech.com.tw ?

Password


Log in

Phone number login >

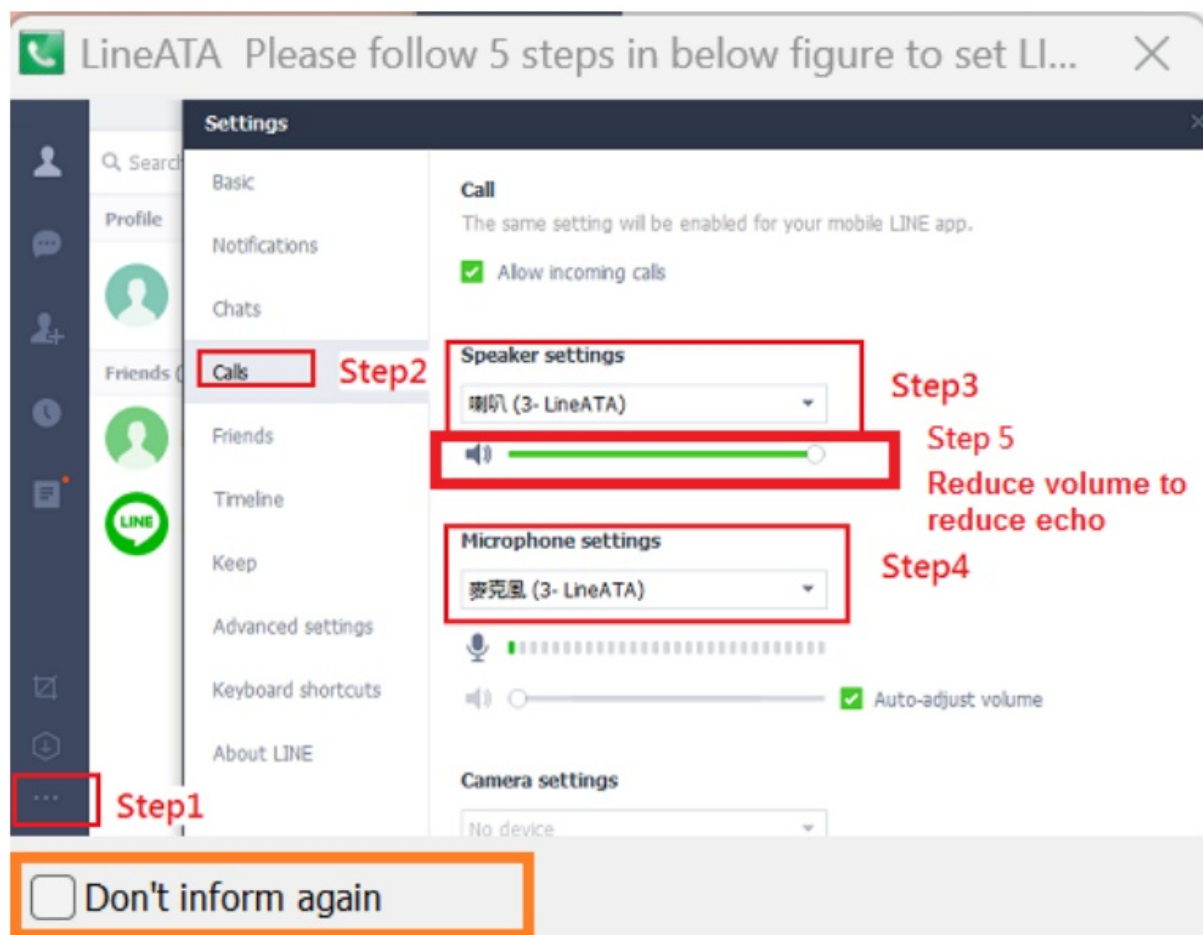
☒ Log me in automatically

☒ Run LINE when Windows starts

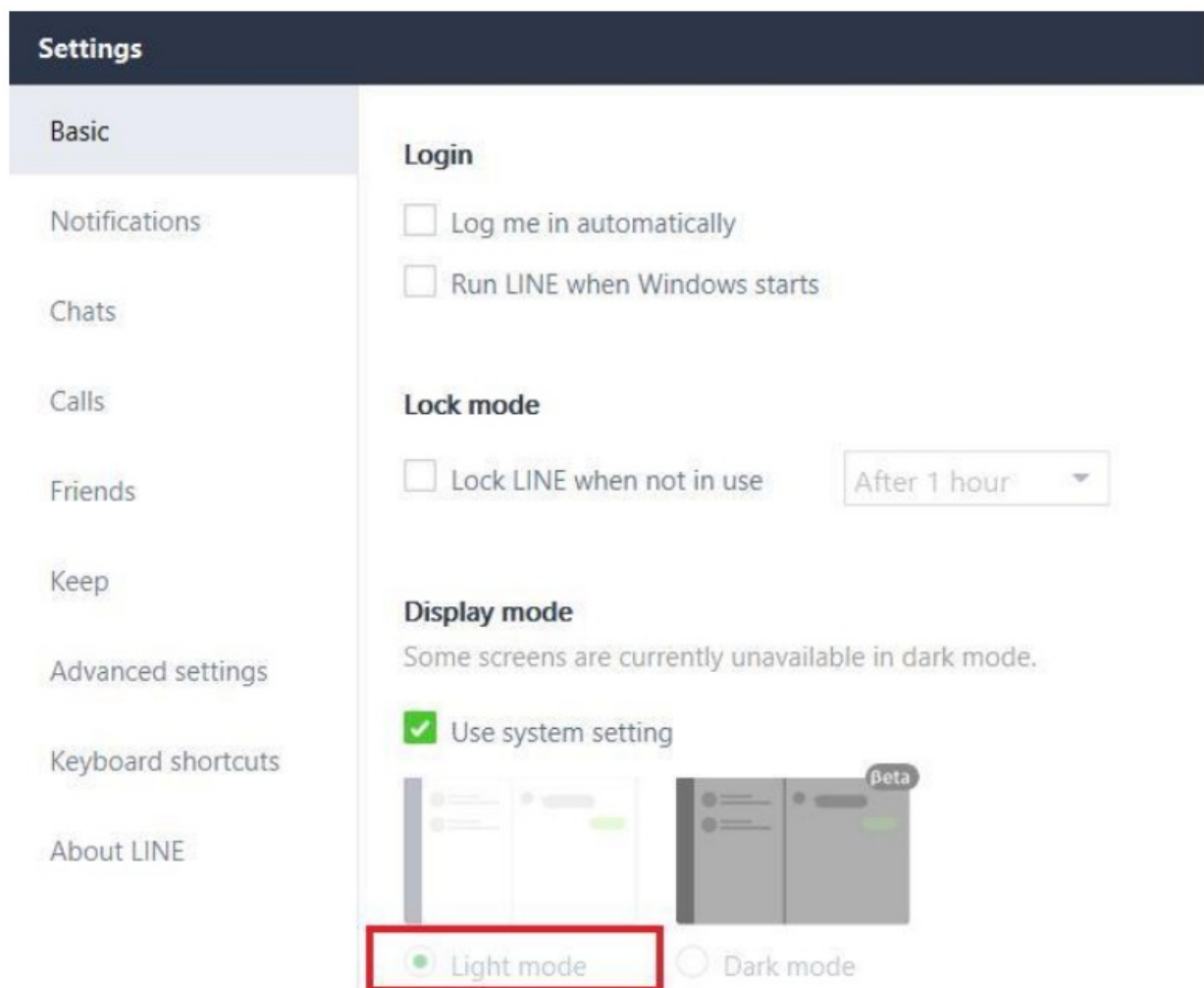
Sign up

 Reset password

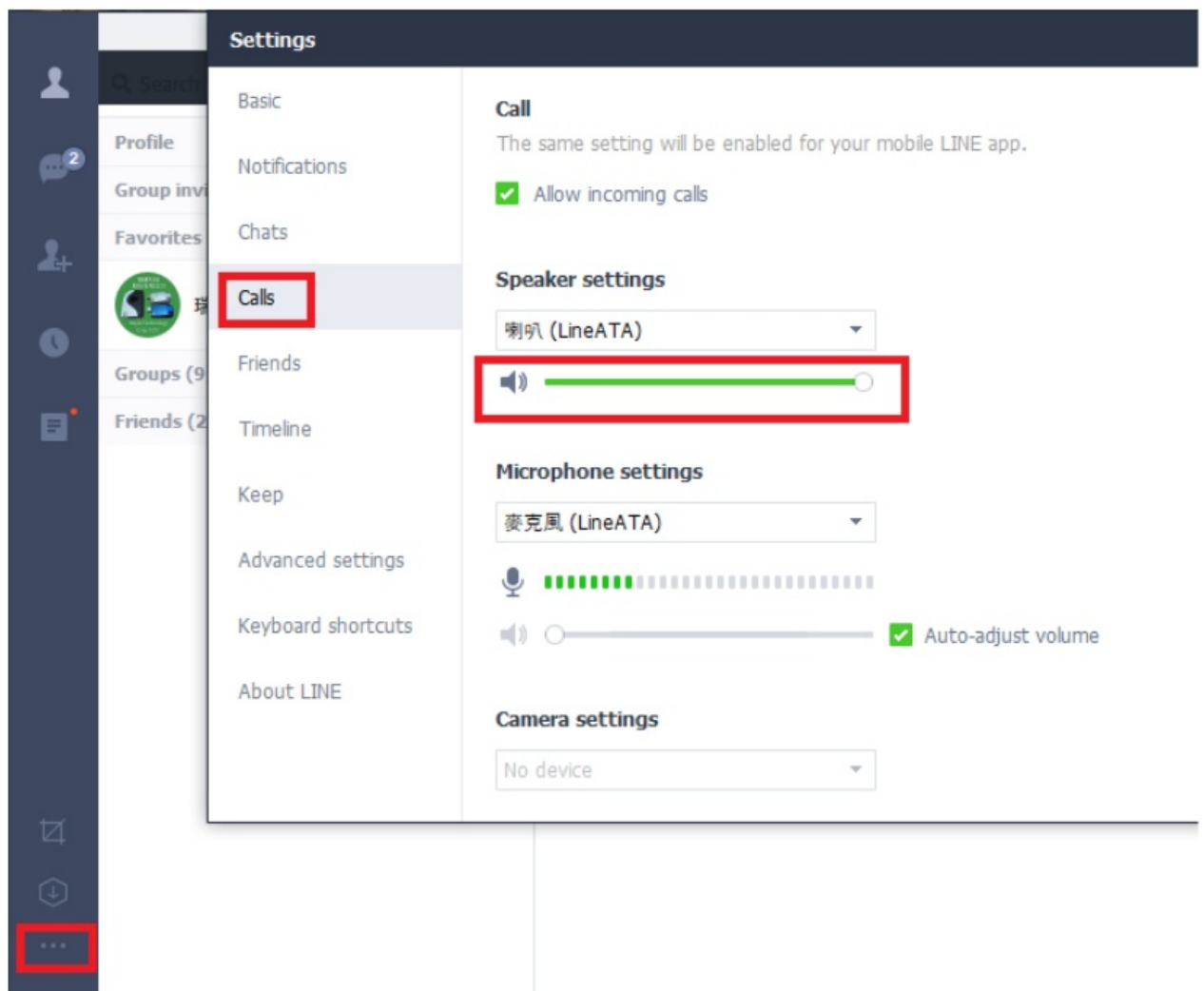
2. When you run LineATA for the first time, a window will pop up as shown below. Please follow the five steps outlined in the figure to set LineATA as the device for LINE Speaker and Microphone. If the LINE audio setting is set to “Use system settings” and the system’s default audio is always set to LineATA, then it will work fine. If you no longer wish to see this reminder, simply select “Don’t inform again” to prevent it from appearing in the future.



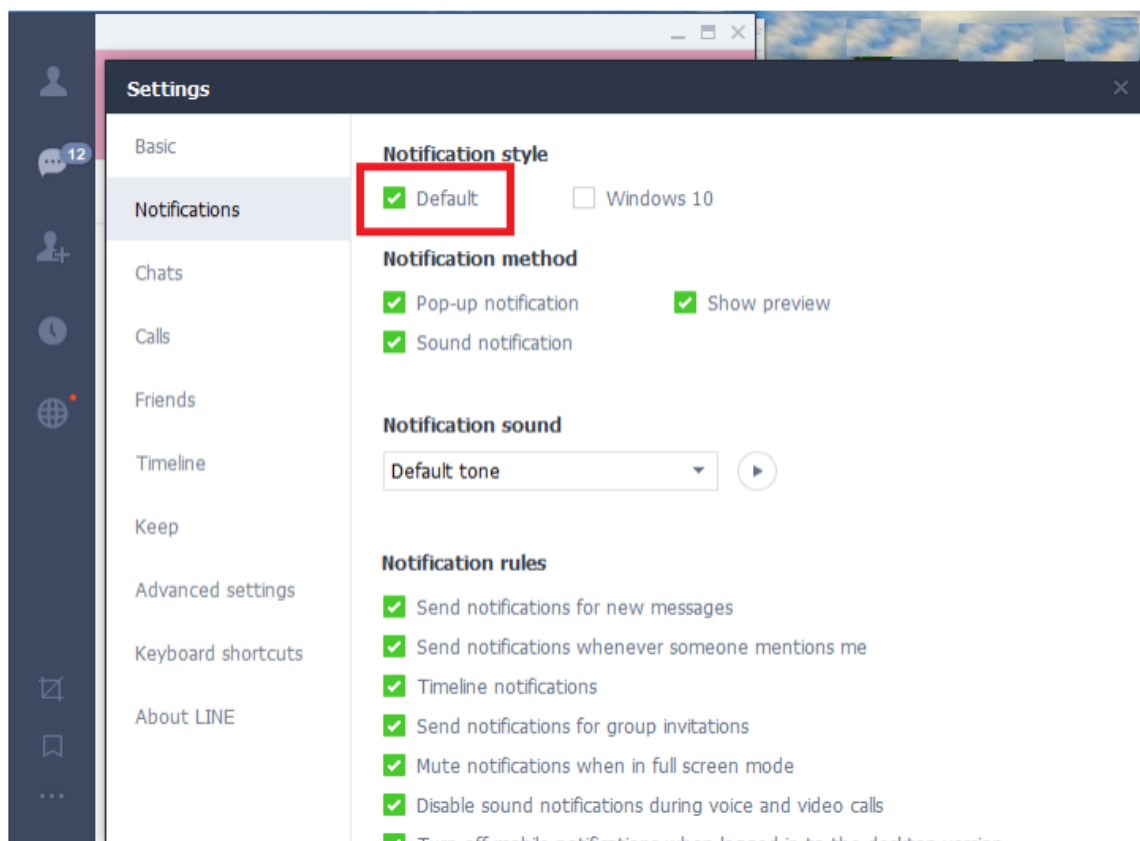
3. Please set LINE Display mode at “Light mode” as the figure below circled in red by choosing LINE Settings – Basic and scrolling down to the bottom of the basic page for the setting.



4. Since LINE does not provide an API for voice application development, LineATA attempts to control the LINE GUI for actions such as making calls, hanging up, and answering incoming calls. If a user wants to run another application on the PC while LineATA is connected, it is crucial to avoid interrupting LineATA's control over LINE GUI during these actions. If LineATA's control is disrupted, it may not function properly. While users can use other applications during a LINE call, the call window itself cannot be closed.
- LineATA supports only the following language settings for the LINE GUI: Traditional Chinese, Simplified Chinese, or English. If LINE is set to any language other than these, LineATA will not function correctly.
 - Additionally, LineATA only supports PCs with a DPI setting of 100%, 125%, 150%, or 200%. Please restart Windows or log out of the current Windows user account and log back in to apply the DPI setting changes. If the DPI setting is outside this range, LineATA may encounter issues accessing LINE, and users will see LineATA's system tray icon, indicating that LINE is not accessible.



5. Why do I sometimes hear an echo of my voice during a LINE call? This issue cannot be fully resolved at this moment, but it can be improved by lowering the LINE speaker volume as the figure below.



6. On Windows 10 and 11, the “Notification style” must be set to “Default.” If it is not set correctly, the phone will not ring when there is an incoming LINE call.
This issue does not occur on Windows 7.
7. If LineATA has already been installed and configured, users can perform an overwrite installation with the new LineATA setup program to prevent the loss of settings, such as Speed Dial settings, which could occur if the existing LineATA software is uninstalled before installing the updated version. It is recommended not to uninstall LineATA and reinstall the new setup unless necessary.
8. If users encounter any issues with LineATA, please refer to Chapter 4 of the latest LineATA user manual available on our website. Alternatively, feel free to contact us for assistance. Thank you.

Installing Procedures and Usage

1. Remove the LineATA dongle and the setup wizard CD from the LineATA package.
2. Plug the LineATA dongle into your computer’s USB port.



- **LED Indicator:**

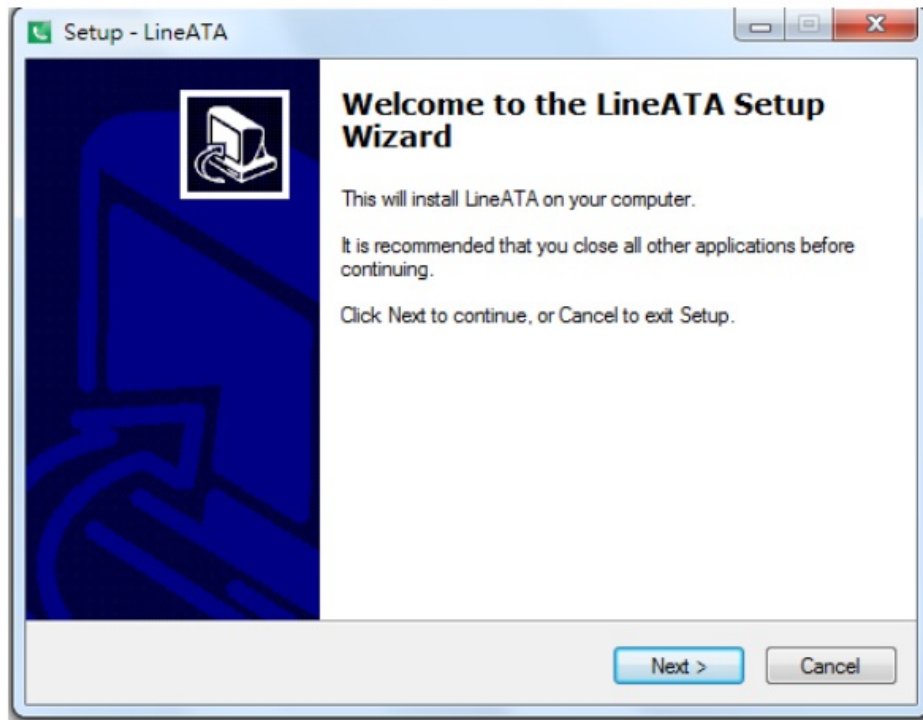
- Standby(Slow on/off)
 - Ringing(Fast on/off)
 - Call active(Always on)
 - Error(Always off)
3. Connect LineATA RJ-11 port to a regular analog phone RJ-11 port or PBX trunk line through phone cable and make sure phone is on-hook properly.



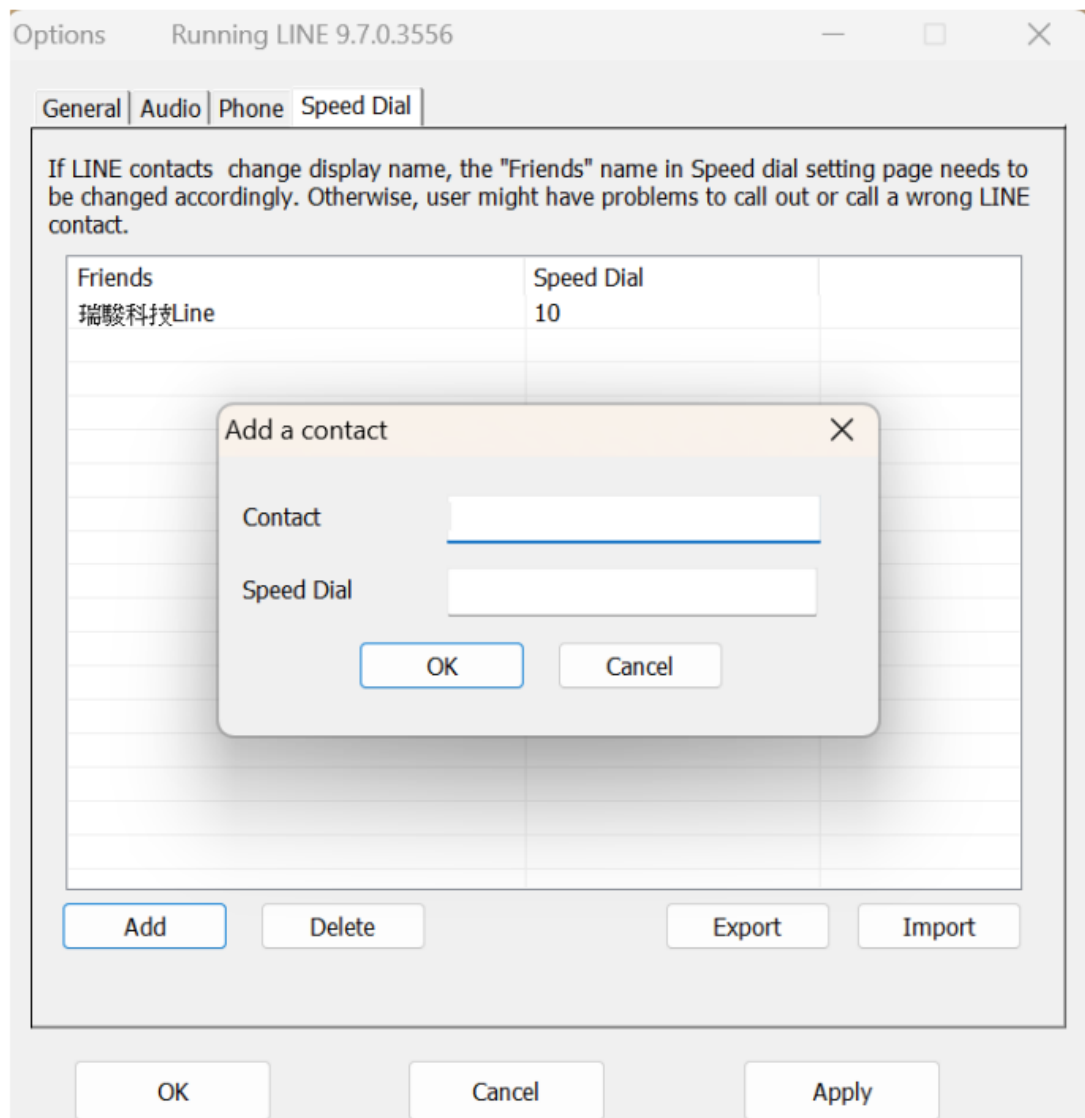
4. Put LineATA setup wizard CD into your computer CD ROM and double-click LineATASetup program. Or go to Regintech web site <https://www.regintech.com.tw/download.htm> to download the latest LineATA setup program for installation.
5. The “Select Setup Language” window pops up. Choose a preferred language by scrolling down the selection bar. After choosing the language, click “OK”.



6. The “Welcome to the LineATA Setup Wizard” appears. Read the on-screen instructions and click Next until you finish the setup . Then launch LineATA from the Windows desktop “Start” menu or click the LineATA shortcut on the Windows desktop.

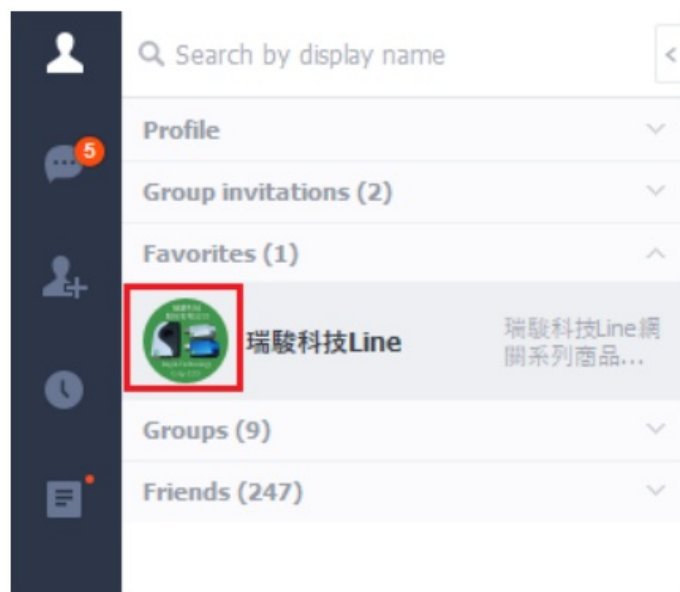


7. Check the status of LineATA's system tray icon at the bottom-right corner of the Windows desktop. If you can see the LineATA's system tray icon presented as, or the system tray icon shows LineATA when the mouse cursor is put on LineATA's system tray icon. And you can hear the dial tone when you pick up the phone receiver, and the LED of LineATA is solid in blue colour. Then LineATA should be successfully installed.
8. If LineATA' system tray icon at the bottom-right corner of Windows desktop show LINE unavailable , LINE might not be logged in successfully. Please refer to item 4 of "Important Notice before Use".
9. Users can use the LineATA Speed Dial page to set speed dial for LINE friends.
'Friends' is the display name shown in LINE GUI. They can set up to 12 digits for speed dial settings. LINE Speed dial list can be exported as a backup and imported for use in the future. They can click "Friends" or "Speed Dial" individually to have the data sorted in a sequential order for easy finding. If they want to delete some friends, they can hold the keyboard "Ctrl" key and choose all friends to be deleted, then press the "Delete" button. The selected friends will be deleted.
 - **Note:** LINE friend display name might be modified; users need to modify it in the "Friends" column in such a case. Otherwise, a LINE speed dial call might fail.



Users can fill in LINE friend's name as shown in LINE GUI on "Contact" of Speed Dial page or copy the name from LINE GUI as below steps.

- Click the LINE friend profile as below the figure circled in red.

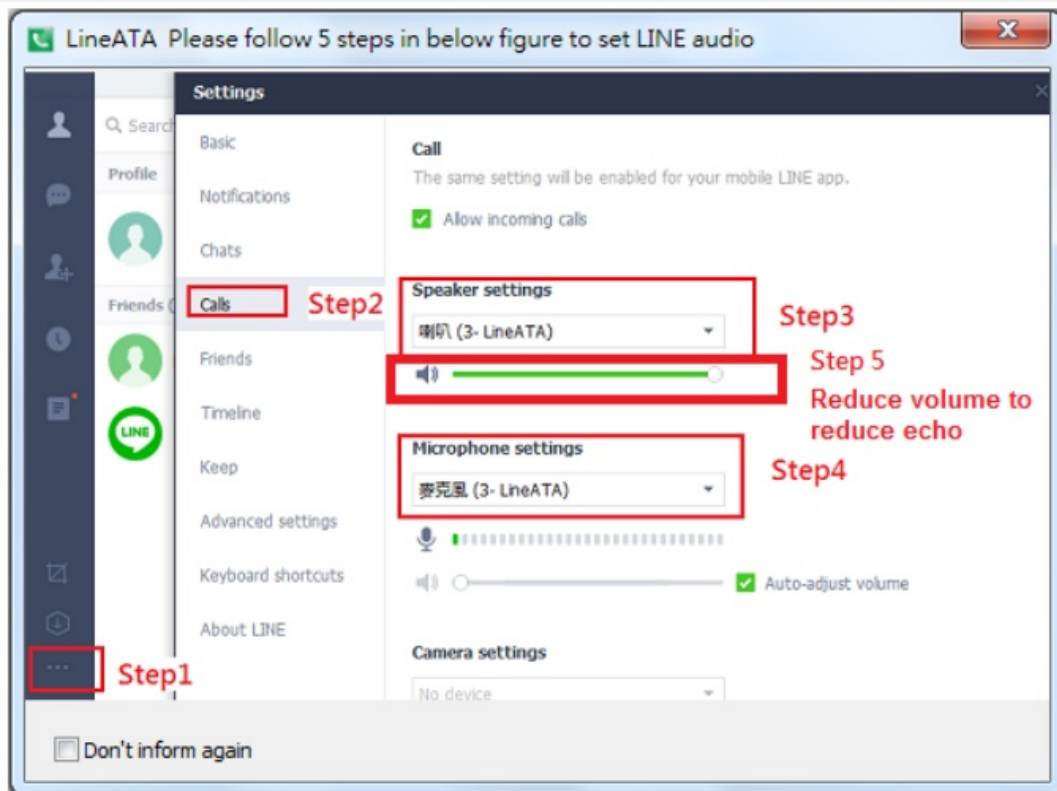
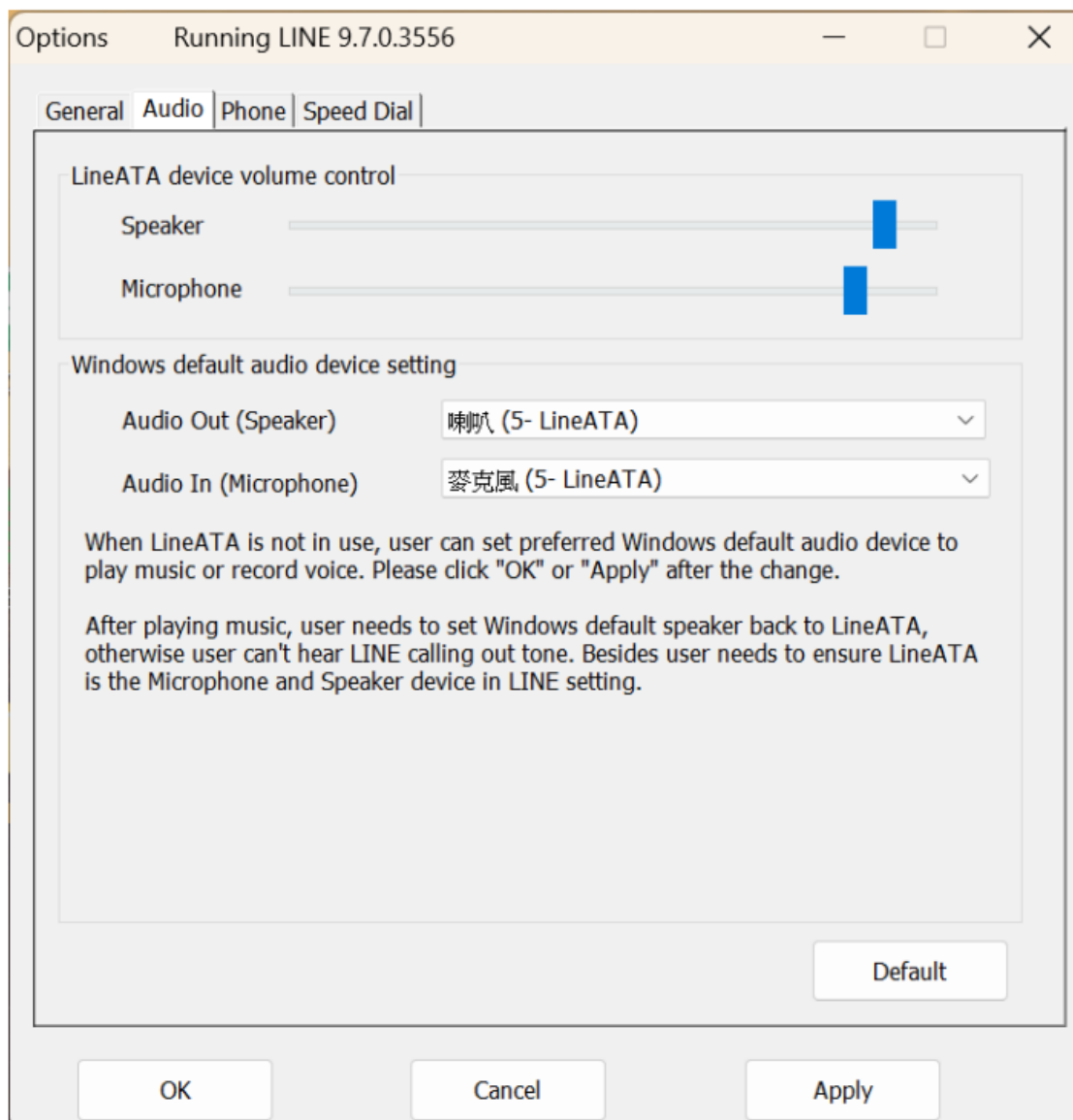


- The picture below pops out. Click the content circled in red and copy & paste on

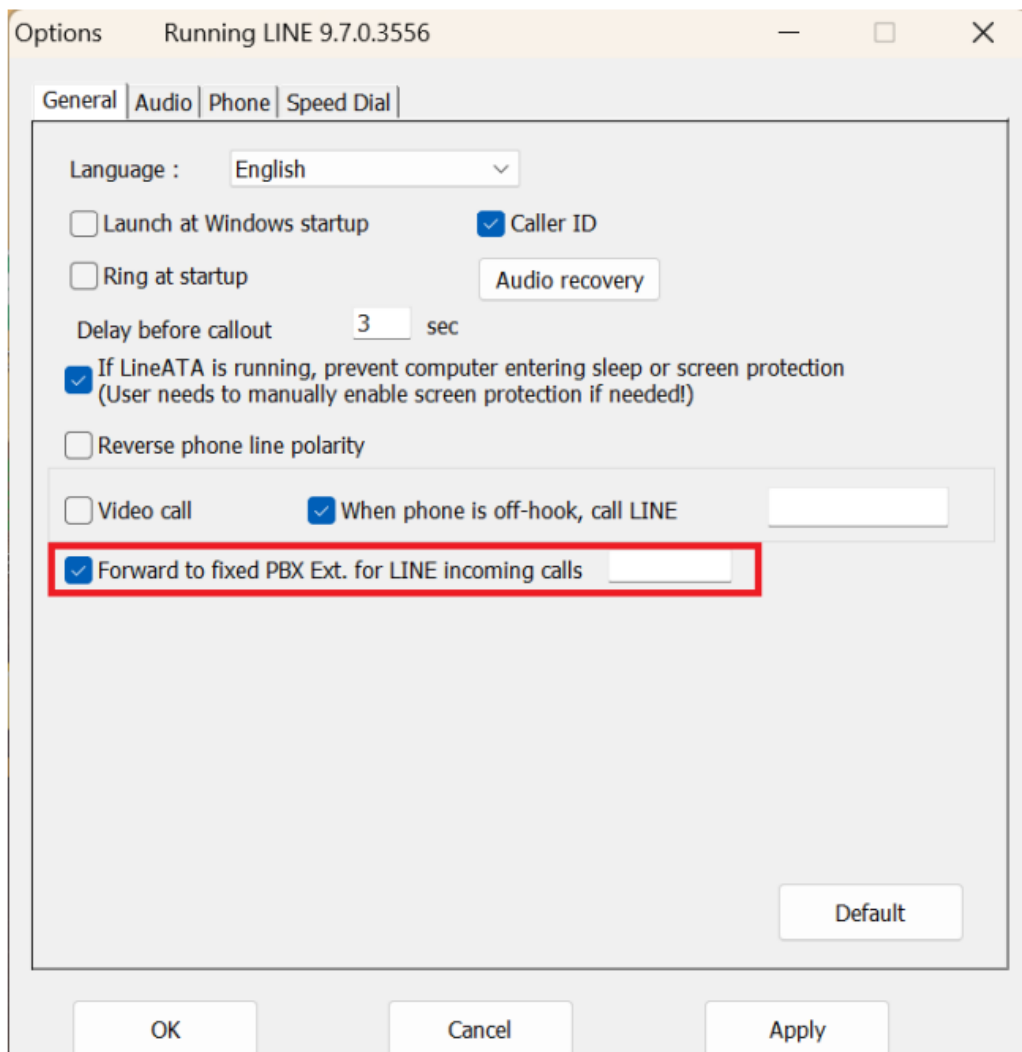
“Contact” of the Speed Dial page.



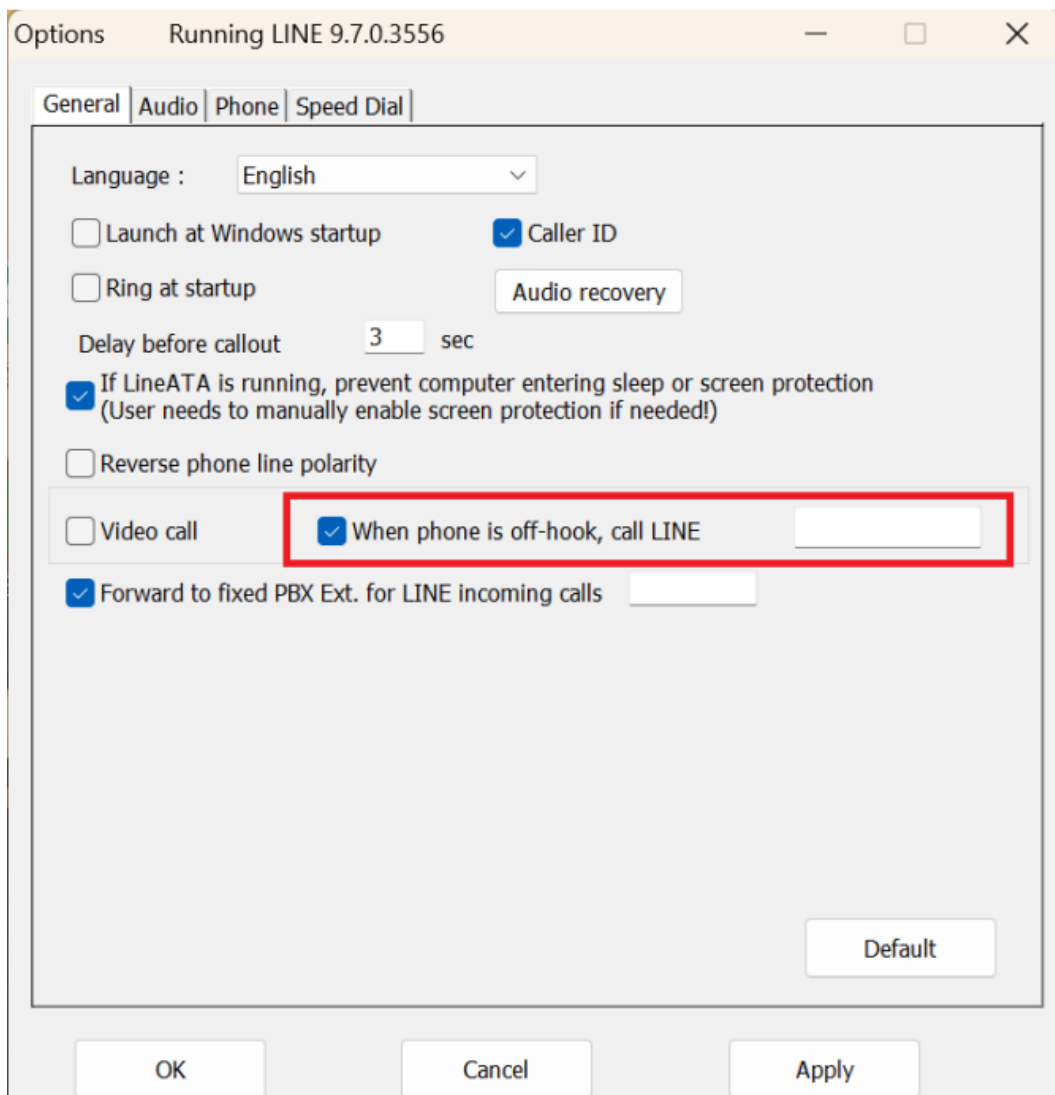
- When LineATA is not in use, users can set preferred Windows default audio device to play music or record voice. Please click “OK” or “Apply” after the change. After playing music, users need to set Windows default speaker back to LineATA, otherwise they can’t hear LINE calling out tone. Besides they need to ensure LineATA is the Microphone and Speaker device in LINE setting.



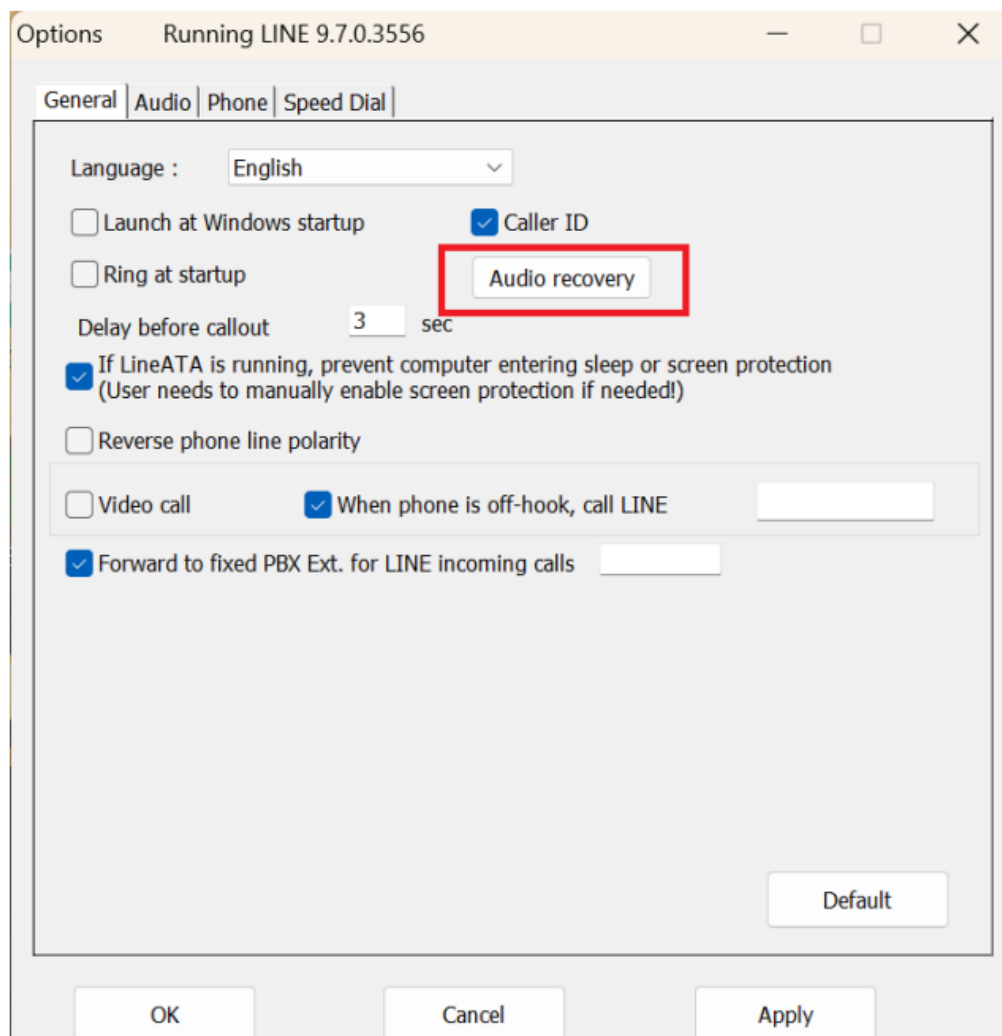
- 11. Support LINE DID: incoming LINE calls can be forwarded to the assigned PBX extension for easy customer service support.



- Pick up your phone receiver or handset and dial LINE friend's speed number + “#” key through the phone keypad after hearing a dial tone and enjoy a LINE call. You can pick up the phone first and then make a LINE call from the LINE GUI. If you assign a specific LINE account as below, the LINE friend will be called out when you pick up the phone. We call this the LINE DOD function.

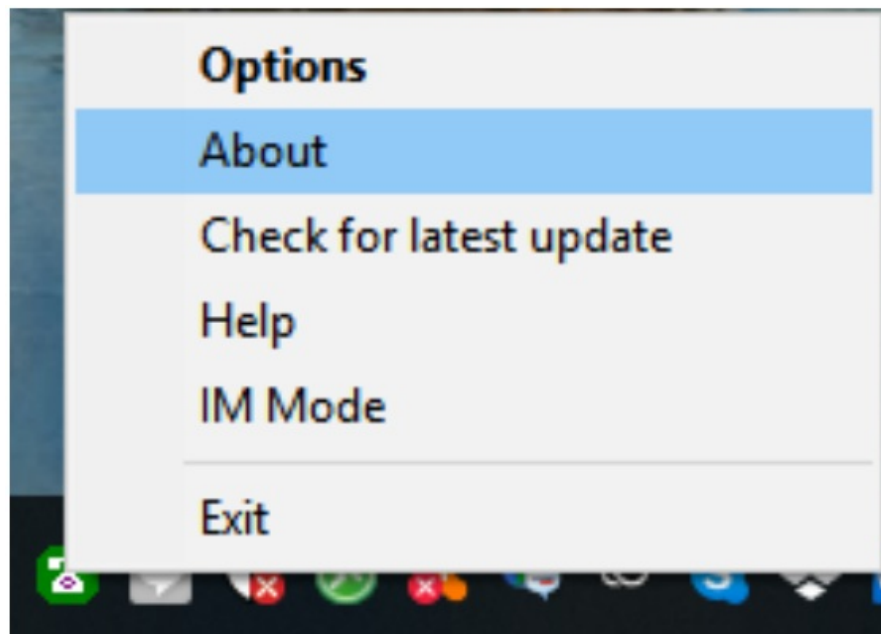


- When there is an incoming call, pick up your phone receiver or handset to answer the call. Put back your phone receiver or click the Hang Up/Reject button to hang up the LINE call.
- Sometimes, LineATA call participants may not be able to hear each other, which could be due to poor internet quality. If this issue persists, users can try clicking the “Audio Recovery” button on the General page under the “Options” section of the LineATA’s system tray icon.



Note

1. LineATA setup installation needs to be under a user with administrator privileges.
2. LineATA is quite different with regular USB devices like USB keyboard or mouse. It needs 5V, 500mA power from the USB port. If LineATA can't work properly after this device is successfully installed, please unplug this device and plug into another PC USB port or replace the USB cable with a new good quality one between this device and PC USB port or use USB hub with enough power supply to connect this device and PC USB port.
3. Once the LineATA software is running, the user can right-click on the LineATA tray icon located at the bottom-right corner of the PC desktop to access options such as "Check for Latest Update" and "About." Selecting "About" will display the version of the LineATA software currently installed. If "Check for Latest Update" indicates that a newer version is available, you can download and install it for use.



Customer support

- Regin Technology Corp., LTD.
- TEL: 886-3-5735360
- Mobile: 886-936071552
- E-mail: henry@regintech.com.tw
- LINE ID: Henry Chou
- Skype: regin.skype
- Service hours: 0900~1800 (GMT+08:00 Taipei) office hours
- Regintech website



Frequently Asked Questions

Q: What should I do if I encounter issues with LineATA?

A: Please refer to Chapter 4 of the latest LineATA user manual available on our website for troubleshooting steps. You can also contact us for further assistance.

Documents / Resources

	<p>REGIN LineATA LINE USB Gateway [pdf] User Guide</p> <p>LineATA LINE USB Gateway, LineATA, LINE USB Gateway, USB Gateway</p>
---	--

References

- [User Manual](#)

◆ LINE USB Gateway, LineATA, LineATA LINE USB Gateway, REGIN, USB

■ REGIN Gateway

Leave a comment

Your email address will not be published. Required fields are marked *

Comment *

Name

Email

Website

☐ Save my name, email, and website in this browser for the next time I comment.

[Post Comment](#)

Search:

[Search](#)

[Manuals+](#) | [Upload](#) | [Deep Search](#) | [Privacy Policy](#) | [@manuals.plus](#) | [YouTube](#)

This website is an independent publication and is neither affiliated with nor endorsed by any of the trademark owners. The "Bluetooth®" word mark and logos are registered trademarks owned by Bluetooth SIG, Inc. The "Wi-Fi®" word mark and logos are registered trademarks owned by the Wi-Fi Alliance. Any use of these marks on this website does not imply any affiliation with or endorsement.