



REELCRAFT DP5000 Spring Driven Hose Reels User Manual

[Home](#) » [REELCRAFT](#) » REELCRAFT DP5000 Spring Driven Hose Reels User Manual 

Contents

- [1 REELCRAFT DP5000 Spring Driven Hose Reels](#)
- [2 Product Information](#)
- [3 DIMENSION](#)
- [4 Product Usage Instructions](#)
- [5 Installation Instructions](#)
- [6 Operating Instructions](#)
- [7 SAFETY](#)
- [8 OVERVIEW](#)
- [9 Documents / Resources](#)
 - [9.1 References](#)
- [10 Related Posts](#)



REELCRAFT DP5000 Spring Driven Hose Reels

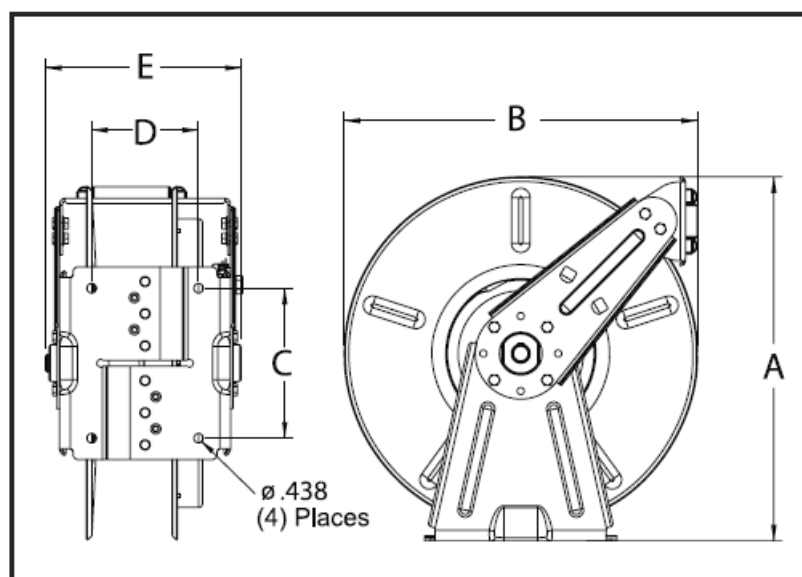


Product Information

The DP5000 spring-driven hose reels are designed for high-pressure applications and are available in two models: DP5600 OHP and DP5635 OHP. The dimensions of the hose reel are as follows:

	A	B	C	D	E
Dimensions	16 3/8	14 3/8	7	5	9

DIMENSION



The maximum installation height of the hose reel is 16 feet.

Product Usage Instructions

Before using the DP5000 spring-driven hose reel, read the user manual carefully and observe all safety precautions. Personal injury and/or equipment damage may result if proper safety precautions are not observed.

Installation Instructions

1. Unpack and inspect the hose reel for damage. Check for completeness and turn the spool by hand to ensure smooth operation.
2. Configure the hose reel for top, side, or bottom hose dispensing by removing bolts from one side of the guide roller bracket and loosening the four guide arm bolts on each side of the hose reel. Remove each guide arm and then reinstall in the desired configuration.
3. Position the hose reel on the floor, wall, or ceiling and secure into place using four (customer supplied) bolts.

WARNING: Ensure that reel, hose, and equipment are properly grounded. Use an ohmmeter to check ground continuity.

Mounting

CAUTION: Unless reel was specified differently when ordering, maximum installation height is 16 feet. Do not exceed this distance.

Figure A



Figure B

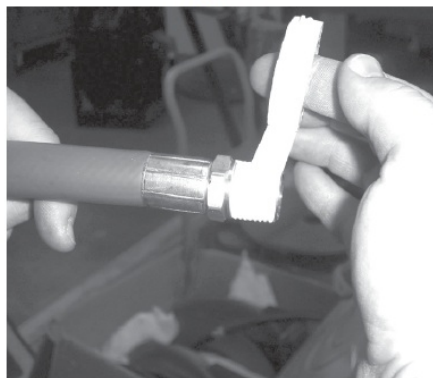
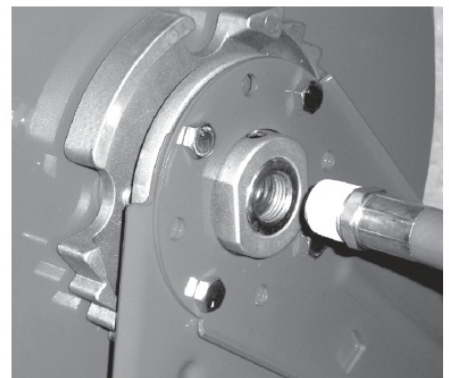


Figure C



Maximum Operating Temperature:

High pressure (4000 p.s.i.) = 210 °F (99 °C)

Input Hose Installation

1. Apply thread sealant to all threads on standard reels as shown in Figure B.
2. Connect the input hose to the main shaft input (Figure C) and tighten securely, ensuring a sealed connection has been made.
3. Ensure that supply line pressure does not exceed the maximum working pressure rating of the hose reel.
4. Use a flexible hose connection at input. Do not use rigid plumbing as it may void the warranty.
5. The recommended torque is not to exceed 70 ft. lb.

WARNING: Use extreme caution; reel under tension. Avoid releasing the latch mechanism.

CAUTION: Apply pipe thread sealant to all threads on standard reels. Do not overtighten the connection. Recommended torque not to exceed 70 ft. lb.

Output Hose Installation

- **WARNING:** Use extreme caution; reel under tension. Avoid releasing latch mechanism.
- **CAUTION:** Apply pipe thread sealant to all threads on standard reels. Do not overtighten connection.

Recommended torque not to exceed 70 ft. lb.

Figure D



Figure E



Figure F



1. Manually turn the sheave until the spring is tight, back off 2 turns, then latch.
2. Route output hose through roller bracket, U-bolts, then through cutout in the spool as indicated in the illustrations (Figure D and E).
3. Connect the output hose to the swivel output (Figure E).
4. Place U-bolt over the hose and through the slotted holes below the hose opening. Add washers and lock nuts, tighten securely (Figure F).
5. Charge the hose. Momentarily open the control valve to purge hose of gases. When fluid appears at control valve, close valve. With hose fully charged, release latch and wind the output hose onto the reel.
6. Install bumper stop assembly.
7. The recommended torque not to exceed 70 ft. lb.

Adjustments

Use extreme caution while making adjustments as the reel is under tension. Avoid releasing the latch mechanism. If necessary, adjust spring tension as per the instructions in the user manual.

- **WARNING:** Use extreme caution; reel under tension. Avoid releasing latch mechanism. If necessary, adjust spring tension on reel by manually adding or removing wraps of hose from spool, one wrap at a time, until desired tension is obtained. Manually add wraps to increase tension. Remove wraps to decrease tension.
- **CAUTION:** When adding wraps of hose, add just enough wraps to achieve the desired tension without exceeding the winding mechanism's spring capacity. Properly tensioned reels allow all hose to be freely removed from the spool until the point of U-bolt contact. Damage to the winding mechanism will result if spring is over-tensioned.

Service Instructions

User servicing of the hose reel is limited to replacing input/output hoses only. Refer all other repairs to an authorized service person or directly to Reelcraft. Failure to do so may result in personal injury and/or equipment damage and may void the warranty. Before performing any service procedures, rewind the hose on the reel and then bleed pressure from the system.

User servicing of the reel is limited to replacing input/output hoses only. Refer all other repairs to an authorized service person or directly to Reelcraft. Failure to do so may result in personal injury and/or equipment damage and may void the warranty.

- **WARNING:** Rewind hose on reel, then bleed pressure from system before performing the following procedures.
- **CAUTION:** Remove all spring tension before disassembling the hose reel. Do not attempt to open the riveted spring case assembly.

Operating Instructions

Series DP5000 Spring Driven Hose Reels

- High Pressure Model Numbers:
- DP5600 OHP DP5635 OHP

IMPORTANT

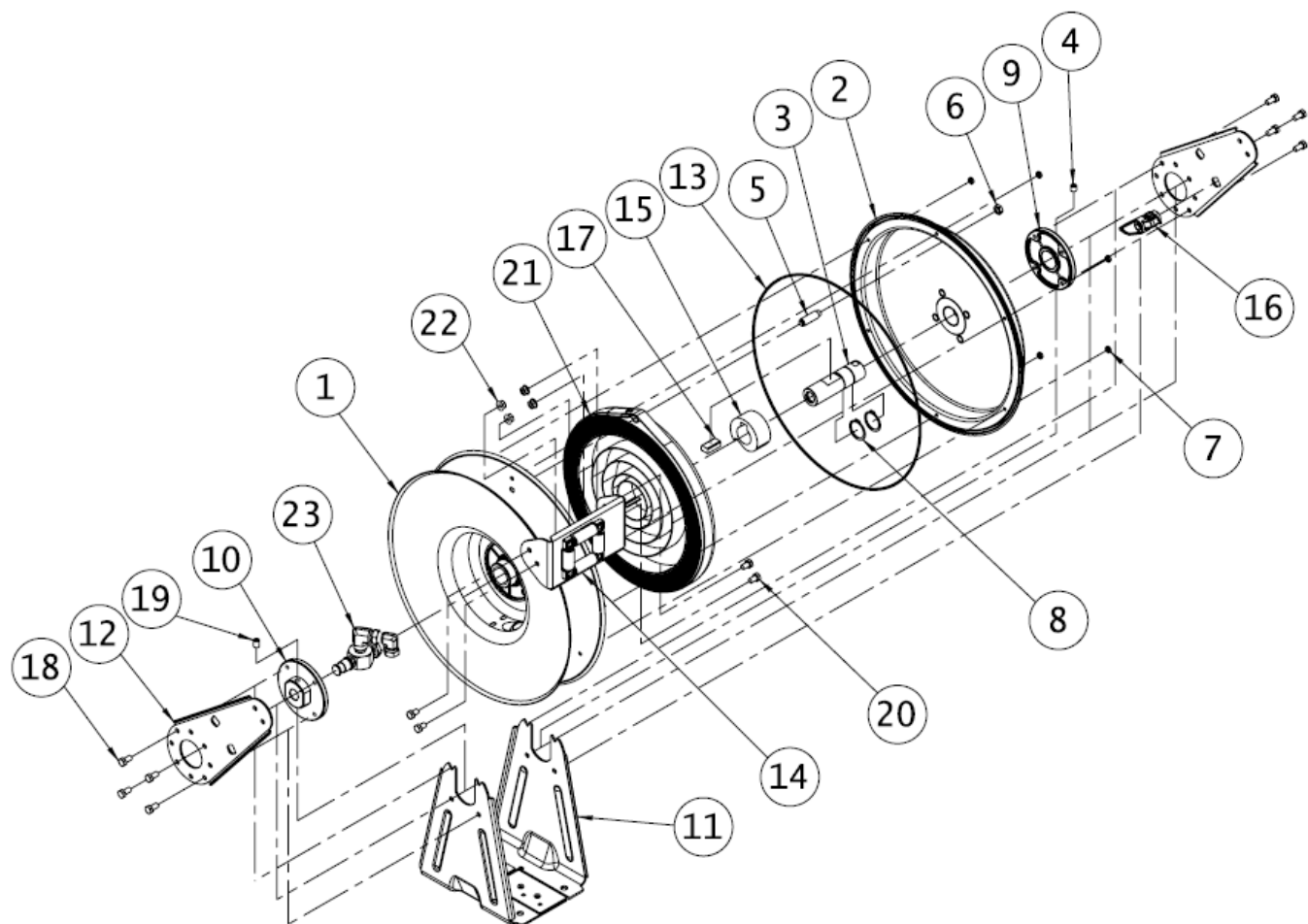
Read this manual carefully before installing, operating or servicing this equipment.

SAFETY

Personal injury and/or equipment damage may result if proper safety precautions are not observed.

- Ensure that reel is properly installed before connecting input and output hoses.
- Bleed fluid/gas pressure from system before servicing reel.
- Before connecting reel to supply line, ensure that pressure does not exceed maximum working pressure rating of reel.
- Remember, even low pressure is very dangerous and can cause personal injury or death.
- Be aware of machinery and personnel in work area.
- If a leak occurs in the hose or reel, remove system pressure immediately.
- A high tension spring assembly is contained within the reel. Exercise extreme caution.
- Pull hose from reel by grasping the hose itself, not the control valve.
- If reel ceases to unwind or rewind, remove system pressure immediately. Do not pull or jerk on hose!
- Treat and respect the hose reel as any other piece of machinery, observing all common safety practices.

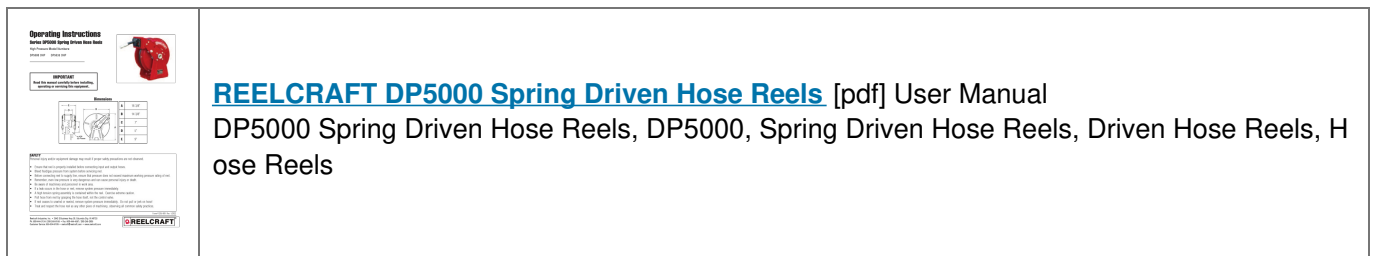
OVERVIEW



ITEM NO.	PART NO.	NO. REQ'D	DESCRIPTION	ITEM NO.	PART NO.	NO. REQ'D	DESCRIPTION
2	S602149	1	Spring Case and Ratchet Assembly	13	260901	1	Spring Case Gasket
4	300121	1	Set Screw, 3/8-16 X 3/8" Long	15	261274	1	Spring Arbor
5	S260031	1	Spring Case Stud	16	S602144	1	Latch Pawl Assembly
6	S76-106	1	Hex Jam Nut, 3/8-24	17	261275	1	Arbor Key
7	S300011	6	Hex Lock Nut, 10-32	18	S2-52	8	Hex Cap Screw, 5/16-18 X 5/8" Long
8	300007	2	Snap Ring (External)	19	300006	1	Set Screw, 3/8-16 X 1/2" Long
9	S262115	1	Hub A	20	S2-51	4	Hex Cap Screw, 5/16-18 X 1/2" Long
10	S262116	1	Hub B	22	300107	4	Hex Lock Nut, 5/16-18
12	262441	2	Guide Arm				

ITEM NO.	DESCRIPTION	NO. REQ'D	DP5600 OHP	DP5635 OHP
1	Spool Assembly	1	S602371	S602371
3	Main Shaft	1	262119	262119
11	Base Assembly	1	602140	602140
14	Guide Roller Bracket Assembly	1	S602142	S602142
21	Drive Spring Assembly	1	S600361	S600361
23	Swivel Assembly	1	S602159	S602159
	Hose Assembly	1	NONE	S26-260044
	Bumper Stop Assembly	1	NONE	S602452

Documents / Resources



Manuals+,